

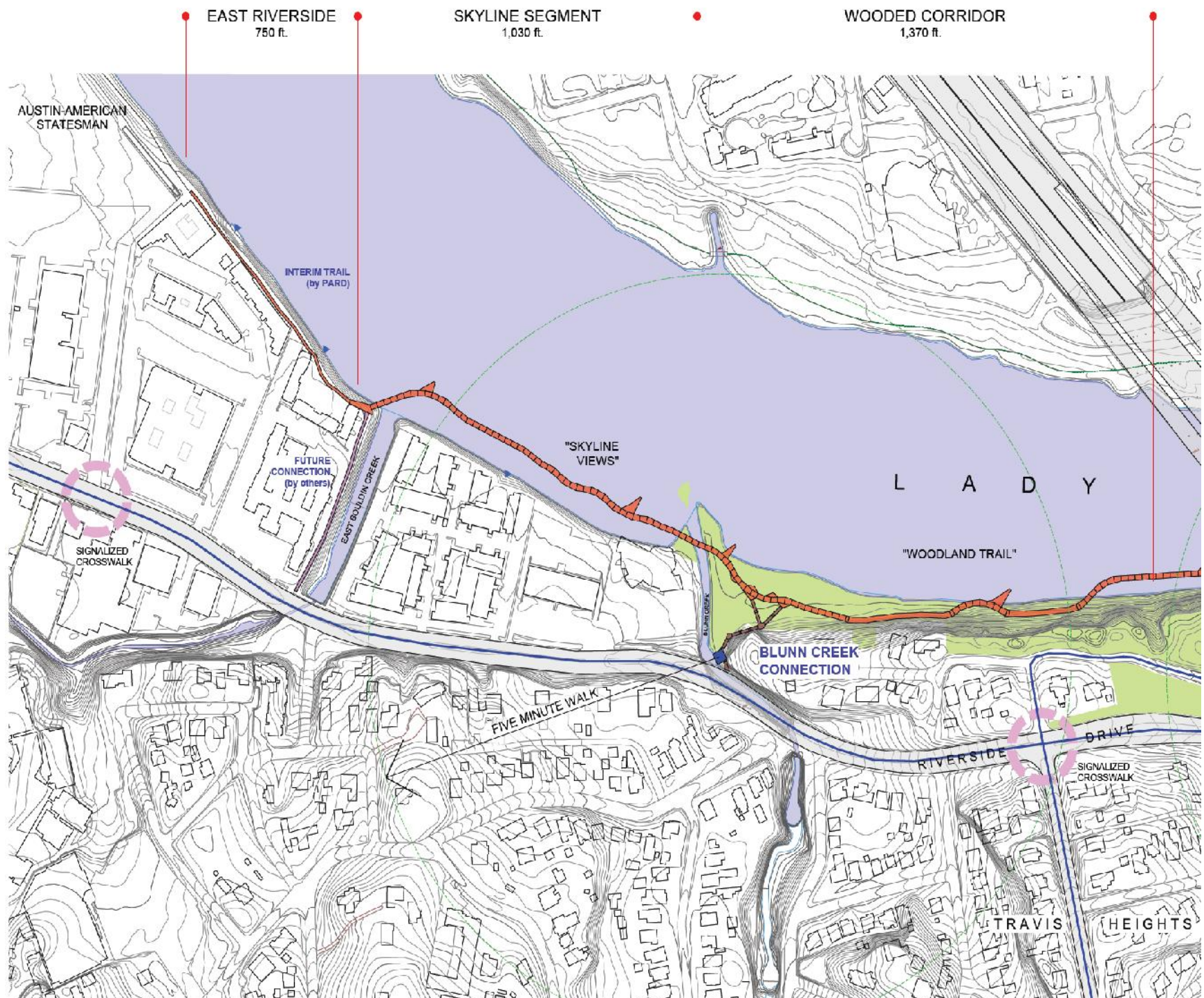


# **BOARDWALK TRAIL AT LADY BIRD LAKE**

**PARKS AND RECREATION BOARD  
12/6/2011**

# **PROJECT SUMMARY**

- **Objective – Safe, attractive, multi-use trail link**
- **Timeline**
  - **City design began 8/08 w/public input**
  - **Preliminary alignment approved by Council 3/09**
  - **Construction funding from 2010 Mobility Bond and The Trail Foundation**
  - **Final design and permitting currently underway**
  - **Bidding to start 12/11**
  - **Construction to begin in 2012; completed 2013**
- **A joint effort of the Parks and Recreation and Public Works Departments**





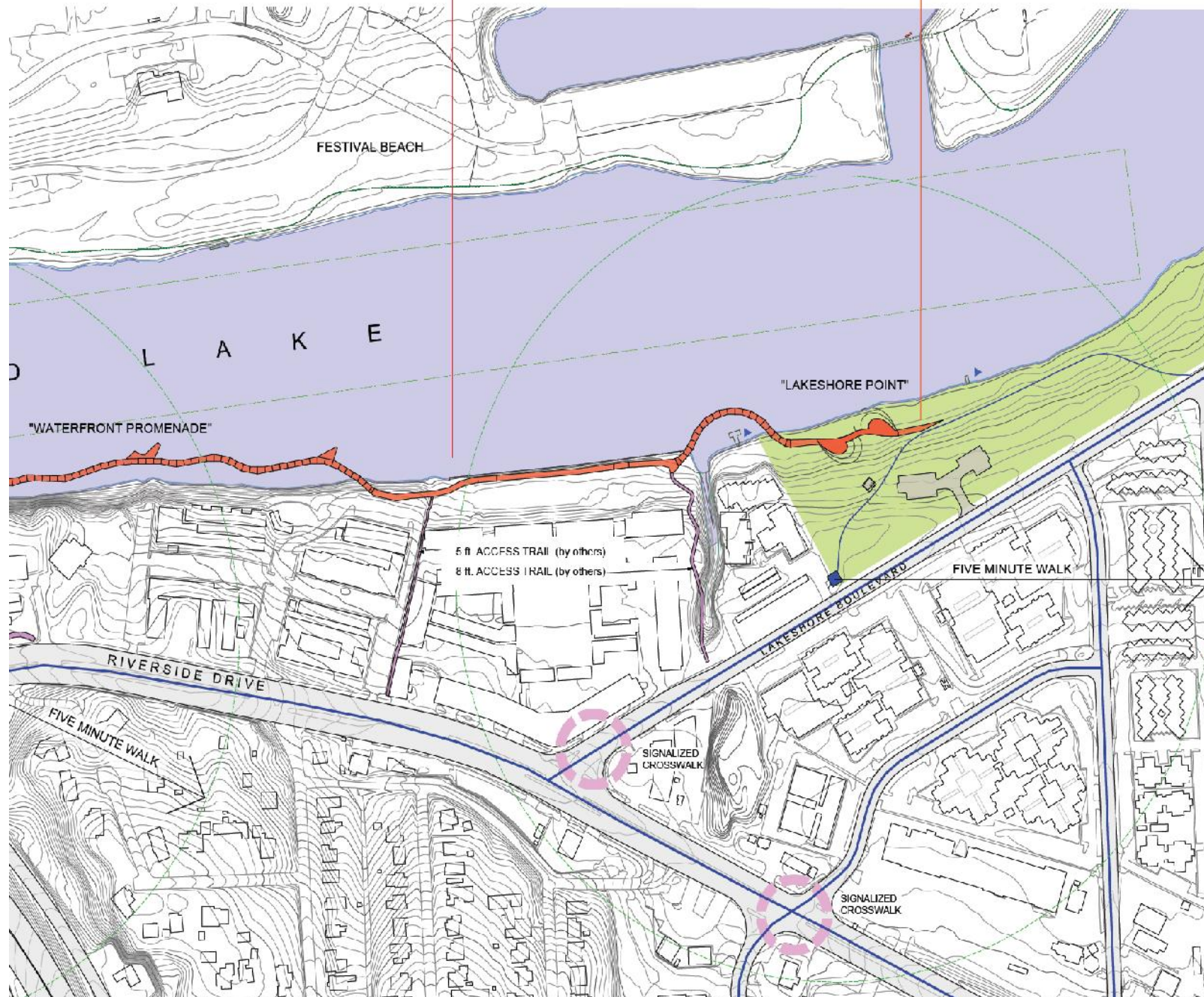




WATERFRONT PROMENADE  
1,650 ft.

• AMLI SEGMENT  
530 ft.

• LAKESHORE POINT  
710 ft.

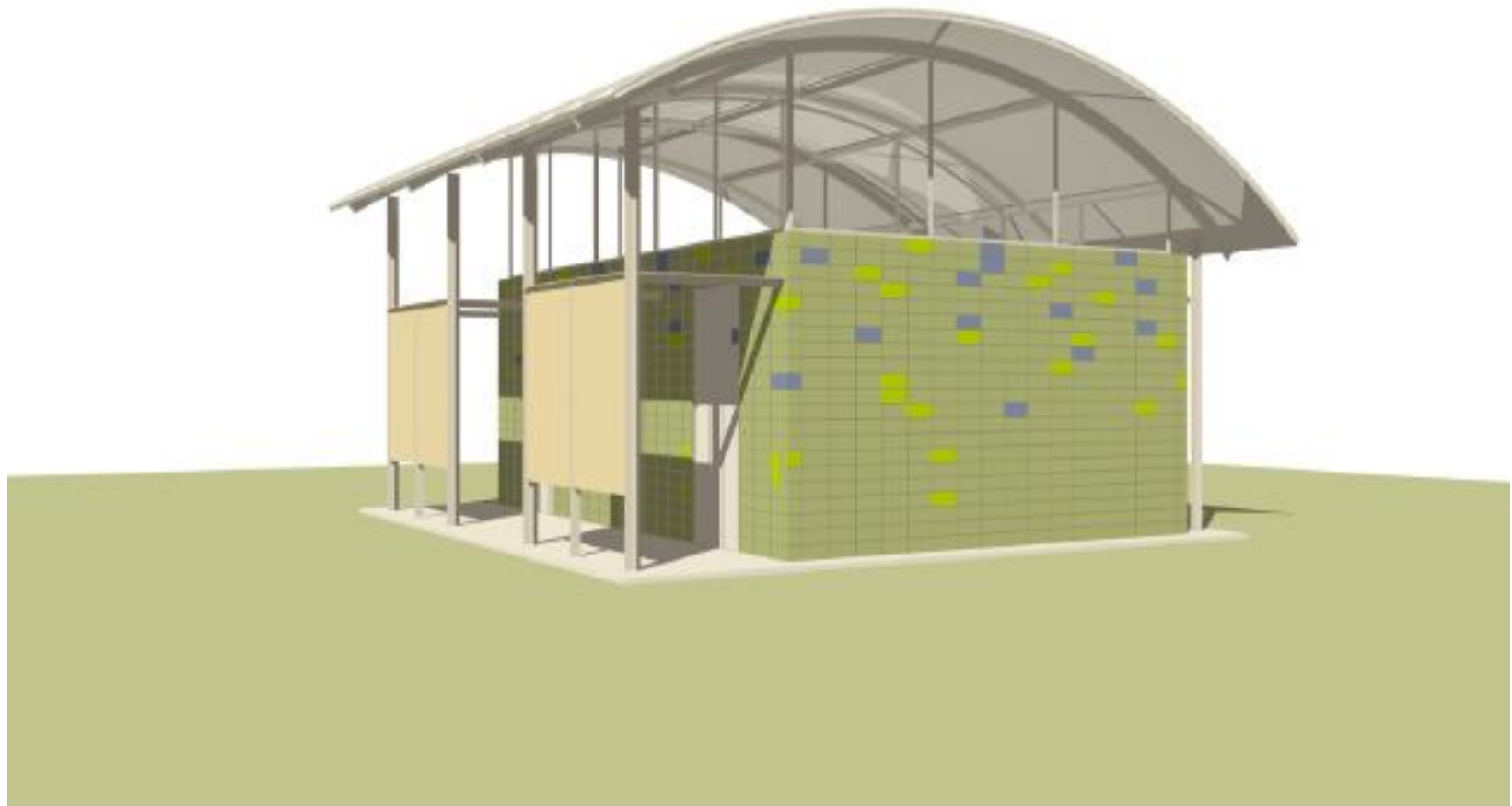


# SHADE STRUCTURE



# RESTROOM

## AT LAKESHORE



# REVISIONS

- **LED lighting in handrail**
- **Blunn access rerouted – no restroom**
- **Harper's access redesigned**
- **Three shade structures on Promenade segment**
- **Restroom at Lakeshore trailhead**
- **Parking nearby at hostel**
- **Recognition panels at landscape feature.**



# SKYLINE SEGMENT

