

**ORDINANCE NO. 2011215-016**

**AN ORDINANCE VACATING A PORTION OF AN ALLEY BETWEEN NUECES STREET AND SAN ANTONIO STREET TO UNIVERSITY BAPTIST CHURCH AND UNIVERSITY LUTHERAN STUDENT CENTER, INC.**

**BE IT ORDAINED BY THE CITY COUNCIL OF THE CITY OF AUSTIN:**

**PART 1.** Council approves the vacation of a portion of the 20 foot wide alley (approximately 4,699 square feet) between Nueces Street and San Antonio Street, commencing at West 22<sup>nd</sup> Street and running 250 feet south of West 22<sup>nd</sup> Street, out of Division D of the City of Austin, between Outlot 22 ½ and Outlot 23 ½ dedicated by Louis Horst's Subdivision, recorded in Book Z, Page 613, Travis County Plat Records, as further described in Exhibit A, to University Baptist Church and University Lutheran Student Center, Inc.

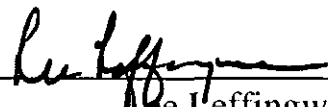
**PART 2.** Travis Flake of Bury & Partners has posted funds with the City in the amount of \$46,400.00, the appraised fair market value of the interests in the land being vacated, which funds will be deposited after approval of this ordinance.


**PART 3.** The vacation is made subject to any easements and restrictions filed of record in Travis County, Texas, affecting the vacated rights. A public utility, access and drainage easement is reserved from the vacation by the City over and across the area described in Exhibit A.

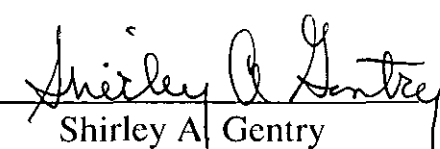
**PART 4.** This ordinance takes effect on December 26, 2011.

**PASSED AND APPROVED**

December 15, 2011

§  
§  
§   
Lee Leffingwell  
Mayor

APPROVED:   
Karen M. Kennard  
City Attorney

ATTEST:   
Shirley A. Gentry  
City Clerk



*Land Surveyors, Inc.*

8333 Cross Park Drive  
Austin, Texas 78754  
Office: 512.374.9722  
Fax: 512.873.9743

Page 1 of 5

#### METES AND BOUNDS DESCRIPTION

BEING 0.016 OF ONE ACRE (715 SQUARE FEET) OF LAND IN DIVISION D OF THE CITY OF AUSTIN AND BEING A PORTION OF A TWENTY FOOT WIDE ALLEY BETWEEN OUTLOT 22 1/2 AND OUTLOT 23 1/2, AS DEDICATED BY LOUIS HORST'S SUBDIVISION; A SUBDIVISION OF RECORD IN BOOK Z, PAGE 613 OF THE PLAT RECORDS OF TRAVIS COUNTY, TEXAS, AND BEING MORE PARTICULARLY DESCRIBED BY METES AND BOUNDS AS FOLLOWS:

COMMENCING at a 1/2" rebar found at the northeast corner of said alley between Outlot 22 1/2 and Outlot 23 1/2 and the northwest corner of Lot 24, Outlot 22 1/2, of said Louis Horst's Subdivision, from which a 1/2" rebar found for the northwest corner of the alley between Outlot 22 1/2 and Outlot 23 1/2 and the northeast corner of Lot 13, Outlot 23 1/2, Louis Horst's Subdivision, bears North 85°06'37" West a distance of 20.07 feet (record: North 84° West a distance of 20 feet), also from which a 1/2" rebar found for the northeast corner of said Lot 24, Outlot 22 1/2, Louis Horst's Subdivision and being at the intersection of the south right-of-way line of West 22nd Street with the west right-of-way line of San Antonio Street (60' R.O.W.) bears South 85°06'37" East a distance of 120.19 feet (record: South 84° East a distance of 120 feet), and also from which a 1/2" rebar found for the southwest corner of Lot 19 1/2, Outlot 35, Louis Horst's Subdivision and being in the north right-of-way line of West 22nd Street bears North 05°01'58" East a distance of 59.91 feet (record: North 06° East a distance of 60 feet) [P.O.C. Grid Coordinates - Northing: 10076909.6868, Easting: 3113983.7721, Combined Scale Factor: 0.99993556];

THENCE South 04°47'56" West (record: South 06° West), along the east line of the 20 foot wide alley and the west line of said Lot 24, Lot 23, and Lot 22, all in Outlot 22 1/2 of Louis Horst's Subdivision, passing at a distance of 70.04 feet (record: 70 feet) a nail found for the southwest corner of Lot 24, Outlot 22 1/2 of Louis Horst's Subdivision and the northwest corner of said Lot 23, Outlot 22 1/2 of Louis Horst's Subdivision, from which a nail found for the southeast corner of Lot 24, Outlot 22 1/2 of Louis Horst's Subdivision, the northeast corner of Lot 23, Outlot 22 1/2 of Louis Horst's Subdivision, and being in said west right-of-way line of San Antonio Street bears South 84°55'44" East a distance of 120.21 feet (record: South 84° East a distance of 120 feet), and continuing along the west line of Lot 23, Outlot 22 1/2 of Louis Horst's Subdivision an additional 22.61 feet (record: 22.5 feet) to a nail found for the southwest corner of Lot 23, Outlot 22 1/2 of Louis Horst's Subdivision and the northwest corner of said Lot 22, Outlot 22 1/2 of Louis Horst's Subdivision, from which a nail found for the southeast corner of Lot 23, Outlot 22 1/2 of Louis Horst's Subdivision, the northeast corner of Lot 22, Outlot 22 1/2 of Louis Horst's Subdivision, and being in the west right-of-way line of San Antonio Street bears South 84°55'39" East a distance of 120.25 feet (record: South 84° East a distance of 120 feet), and continuing along the west line of Lot 22, Outlot 22 1/2 of Louis Horst's Subdivision an additional 69.90 feet (record: 70 feet) for an overall distance of 162.55 feet (record: 162.5 feet), to a 1/2" rebar found for the southwest corner of Lot 22, Outlot 22 1/2 of Louis Horst's Subdivision and the northwest corner of Lot 21, Outlot 22 1/2 of Louis Horst's Subdivision, for the POINT OF BEGINNING, from which a 1/2" rebar found for

**EXHIBIT "A"**

the southeast corner of Lot 22, Outlot 22 1/2 of Louis Horst's Subdivision, the northeast corner of said Lot 21, and being in the west right-of-way line of San Antonio Street bears South 84°41'59" East a distance of 120.17 feet (record: South 84° East a distance of 120 feet) [P.O.B. Grid Coordinates – Northing: 10076747.6757, Easting: 3113970.3888, Combined Scale Factor: 0.99993556];

THENCE South 04°47'56" West (record: South 06° West), continuing along the east line of the 20 foot wide alley and along the west line of Lot 21, Outlot 22 1/2 of Louis Horst's Subdivision, a distance of 71.09 feet (record: 70 feet) to a 1/2" rebar found for the southwest corner of Lot 21, Outlot 22 1/2 of Louis Horst's Subdivision and the northwest corner of Lot 20, Outlot 22 1/2 of Louis Horst's Subdivision, from which a calculated point for the southeast corner of Lot 21, Outlot 22 1/2 of Louis Horst's Subdivision, the northeast corner of said Lot 20, and being in the west right-of-way line of San Antonio Street bears South 85°10'59" East a distance of 120.15 feet (record: South 84° East a distance of 120 feet);

THENCE North 85°10'59" West (record: North 84° West), crossing through the 20 foot wide alley along a prolongation of the south line of Lot 21, Outlot 22 1/2 of Louis Horst's Subdivision and the north line of Lot 20, Outlot 22 1/2 of Louis Horst's Subdivision, a distance of 10.06 feet to a calculated point in the approximate centerline of the 20 foot wide alley;

THENCE North 04°48'22" East, along the approximate centerline of the 20 foot wide alley, a distance of 71.17 feet to a calculated point;

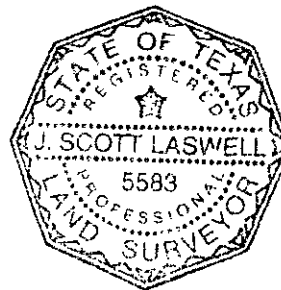
THENCE South 84°41'59" East (record: South 84° East), crossing through the 20 foot wide alley along a prolongation of the south line of Lot 22, Outlot 22 1/2 of Louis Horst's Subdivision and the north line of Lot 21, Outlot 22 1/2 of Louis Horst's Subdivision, a distance of 10.05 feet to the POINT OF BEGINNING.

This parcel contains 0.016 of one acre (715 square feet) of land, more or less, out of Division D, Louis Horst's Subdivision in Travis County, Texas.

Bearing Basis: Texas State Plane Coordinate System, Central zone (4203), NAD 83/96 CORS.

Convergence: 01°20'01"

Combined Scale Factor: 0.99993556



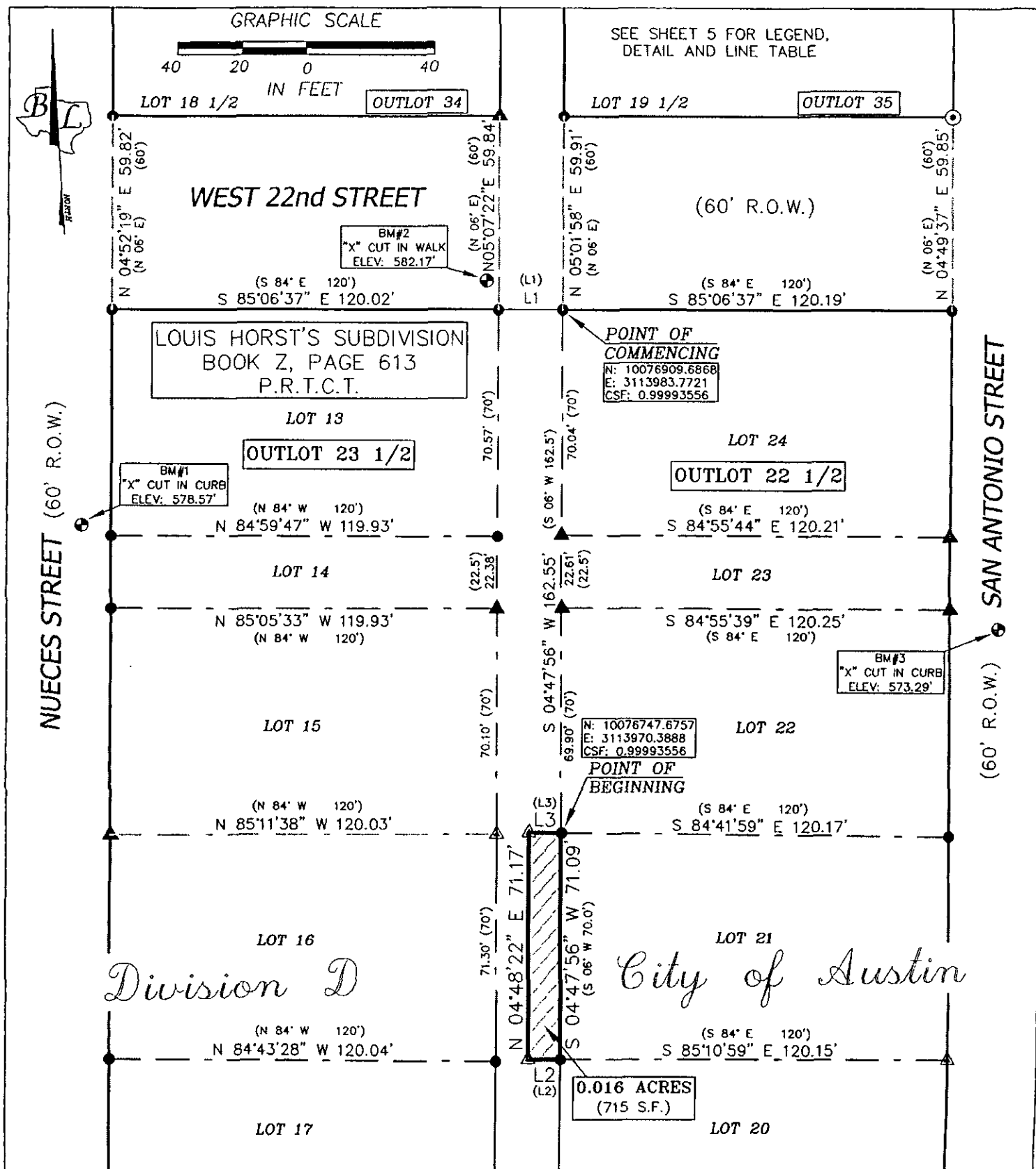
J. Scott Laswell 8/19/11  
J. Scott Laswell Date  
Registered Professional Land Surveyor  
State of Texas No. 5583

File: S:\Projects\22 @Nueces\Docs\Field Notes\Revised Alley Vacation 2\_fn.doc  
Dwg: S:\Projects\22@Nueces\Dwg\Revised Alley Vacation 2.dwg

#### FIELD NOTES REVIEWED

By: CLARK DANIEL Date: 09-13-2011

Engineering Support Section  
Department of Public Works  
and Transportation



SKETCH TO ACCOMPANY FIELD NOTES OF  
0.016 OF ONE ACRE (715 S.F.) OF LAND IN  
DIVISION D OF THE CITY OF AUSTIN AND BEING A  
PORTION OF A TWENTY FOOT WIDE ALLEY BETWEEN  
OUTLOT 22  $\frac{1}{2}$  AND OUTLOT 23  $\frac{1}{2}$ ,  
AS DEDICATED BY LOUIS HORST'S SUBDIVISION;  
A SUBDIVISION OF RECORD IN BOOK Z, PAGE 613  
OF THE PLAT RECORDS OF TRAVIS COUNTY, TEXAS

**BASELINE LAND SURVEYORS, INC.**

## PROFESSIONAL LAND SURVEYING SERVICES

8333 CROSS PARK DRIVE

AUSTIN, TEXAS 78754

OFFICE: 512.374.9722 FAX: 512.873.9743

scott-baseline@austin.tx.com

File: |Projects|22nd @ Nueces|Dwg|Revised Alley Vacation 2.dwg

Job No.

**Snapshot:**

Scale (Hor.): 1"=40'

Checked By: RLW

Drawn By: JS

*SHEET*

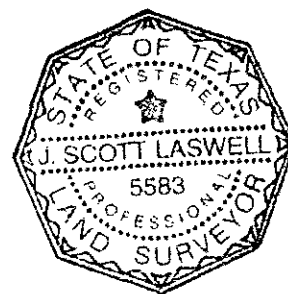
03 of 05

# **LEGEND**

- 1/2" REBAR FOUND
- ⊙ IRON PIPE FOUND
- ▲ NAIL FOUND
- △ CALCULATED POINT
- ⊙ BENCHMARK
- S.F. SQUARE FEET
- R.O.W. RIGHT OF WAY
- ( ) RECORD INFO. PER BK. Z. PG. 594
- P.R.T.C.T. PLAT RECORDS OF TRAVIS COUNTY, TEXAS
- C.S.F. COMBINED SCALE FACTOR

LINE TABLE		
LINE	BEARING	LENGTH
L1	N 85°06'37" W	20.07'
(L1)	N 84° W	20'
L2	N 85°10'59" W	10.06'
(L2)	N 84° W	
L3	S 84°41'59" E	10.05'
(L3)	S 84° E	

*J. Scott Laswell*  
2/19/11



BEARING BASIS: TEXAS STATE PLANE COORDINATE SYSTEM, CENTRAL ZONE (4203), NAD 83/96 CORS.

CONVERGENCE: 01°20'01"

COMBINED SCALE FACTOR: 0.99993556

SKETCH TO ACCOMPANY FIELD NOTES OF  
0.016 OF ONE ACRE (715 S.F.) OF LAND IN  
DIVISION D OF THE CITY OF AUSTIN AND BEING A  
PORTION OF A TWENTY FOOT WIDE ALLEY BETWEEN  
OUTLOT 22 1/2 AND OUTLOT 23 1/2,  
AS DEDICATED BY LOUIS HORST'S SUBDIVISION;  
A SUBDIVISION OF RECORD IN BOOK Z, PAGE 613  
OF THE PLAT RECORDS OF TRAVIS COUNTY, TEXAS

## **BASELINE LAND SURVEYORS, INC.**

PROFESSIONAL LAND SURVEYING SERVICES

8333 CROSS PARK DRIVE

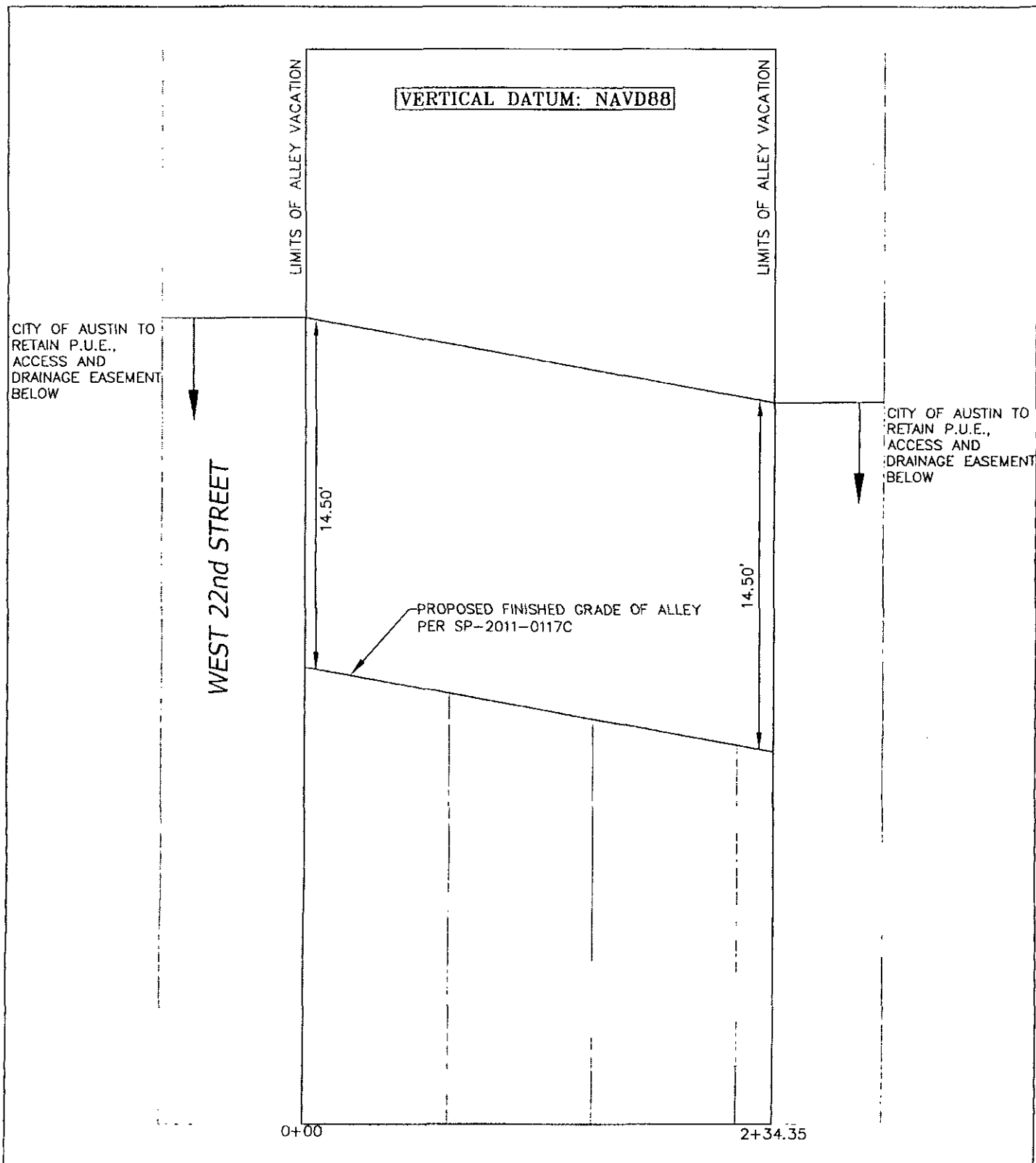
AUSTIN, TEXAS 78754

OFFICE: 512.374.9722 FAX: 512.873.9743

scott-baseline@austin.rr.com

File: I:\Projects\22nd @ Nueros\Drawg\Revised Alley Vacation 2.dwg	
Job No.	Snapshot:
Scale (Hor.): 1"=40'	Scale (Vert.): 1"=10'
Date: 08/18/11	Checked By: RLW
	Drawn By: JSL

SHEET  
04 of 05



SKETCH TO ACCOMPANY FIELD NOTES OF  
0.016 OF ONE ACRE (715 S.F.) OF LAND IN  
DIVISION D OF THE CITY OF AUSTIN AND BEING A  
PORTION OF A TWENTY FOOT WIDE ALLEY BETWEEN  
OUTLOT 22  $\frac{1}{2}$  AND OUTLOT 23  $\frac{1}{2}$ .  
AS DEDICATED BY LOUIS HORST'S SUBDIVISION;  
A SUBDIVISION OF RECORD IN BOOK Z, PAGE 613  
OF THE PLAT RECORDS OF TRAVIS COUNTY, TEXAS

**BASELINE LAND SURVEYORS, INC.**  
PROFESSIONAL LAND SURVEYING SERVICES  
8333 CROSS PARK DRIVE  
AUSTIN, TEXAS 78754  
OFFICE: 512.374.9722 FAX: 512.873.9743  
scott-baseline@austin.tl.com

File: I:\projects\22nd @ Nueces\Drawings\Revised Alley Vacation 2.dwg	
Job No.	Snapshot:
Scale (Hor.): Not to Scale	Scale (Vert.): Not to Scale
Date: 08/18/11	Checked By: RLW Drawn By: JSL

SHEET  
05 of 05



*Land Surveyors, Inc.*

*8333 Cross Park Drive*

*Austin, Texas 78754*

*Office: 512.374.9722*

*Fax: 512.873.9743*

Page 1 of 6

## METES AND BOUNDS DESCRIPTION

BEING 0.092 OF ONE ACRE (3,984 SQUARE FEET) OF LAND IN DIVISION D OF THE CITY OF AUSTIN AND BEING A PORTION OF A TWENTY FOOT WIDE ALLEY BETWEEN OUTLOT 22 1/2 AND OUTLOT 23 1/2, AS DEDICATED BY LOUIS HORST'S SUBDIVISION; A SUBDIVISION OF RECORD IN BOOK Z, PAGE 613 OF THE PLAT RECORDS OF TRAVIS COUNTY, TEXAS, AND BEING MORE PARTICULARLY DESCRIBED BY METES AND BOUNDS AS FOLLOWS:

COMMENCING at a 1/2" iron rebar found for the northwest corner of Lot 13, Outlot 23 1/2 of said Louis Horst's Subdivision and being at the intersection of the south right-of-way line of West 22nd Street (60' R.O.W.) and the east right-of-way line of Nueces Street (60' R.O.W.); from which a 1/2" rebar found for the southwest corner of Lot 18 1/2, Outlot 34 of Louis Horst's Subdivision and being in the north line of said West 22nd Street bears North 04°52'19" East a distance of 59.82 feet (record: North 06° East a distance of 60 feet) [P.O.C. Grid Coordinates - Northing: 10076921.6219, Easting: 3113844.1898, Combined Scale Factor: 0.99993556];

THENCE South 85°06'37" East (record: South 84° East), along the north line of said Lot 13, Outlot 23 1/2 of Louis Horst's Subdivision and the south right-of-way line of West 22nd Street a distance of 120.02 feet (record: 120 feet) to a 1/2" rebar found for the northeast corner of Lot 13, Outlot 23 1/2 of Louis Horst's Subdivision, also being the northwest corner of said 20 foot wide alley between Outlot 23 1/2 and Outlot 22 1/2 of Louis Horst's Subdivision and being the POINT OF BEGINNING; from which a nail found for the southeast corner of said Lot 18 1/2, Outlot 34 of Louis Horst's Subdivision and being in the north right-of-way line of West 22nd Street bears North 05°07'22" East a distance of 59.84 feet (record: North 06° East a distance of 60 feet); [P.O.B. Grid Coordinates - Northing: 10076911.2797, Easting: 3113963.7616, Combined Scale Factor: 0.99993556];

THENCE continue South 85°06'37" East, along the north line of the 20 foot wide alley and the south right-of-way line of Nueces Street a distance of 20.07 feet (record: South 84° East a distance of 20 feet) to a 1/2" rebar found at the northeast corner of the alley between Outlot 22 1/2 and Outlot 23 1/2 and the northwest corner of Lot 24, Outlot 22 1/2, Louis Horst's Subdivision; from which a 1/2" rebar found for the northeast corner of said Lot 24, Outlot 22 1/2, Louis Horst's Subdivision and being at the intersection of the south right-of-way line of West 22nd Street with the west right-of-way line of San Antonio Street (60' R.O.W.) bears South 85°06'37" East a distance of 120.19 feet (record: South 84° East a distance of 120 feet) and also from which a 1/2" rebar found for the southwest corner of Lot 19 1/2, Outlot 35, Louis Horst's Subdivision and being in the north right-of-way line of West 22nd Street bears North 05°01'58" East a distance of 59.91 feet (record: North 06° East a distance of 60 feet);

THENCE South 04°47'56" West (record: South 06° West), along the east line of the 20 foot wide alley and the west line of said Lot 24, Lot 23, and Lot 22, all in Outlot 22 1/2 of Louis Horst's

**EXHIBIT "A"**

Subdivision, passing at a distance of 70.04 feet (record: 70 feet) a nail found for the southwest corner of Lot 24, Outlot 22 1/2 of Louis Horst's Subdivision and the northwest corner of said Lot 23, Outlot 22 1/2 of Louis Horst's Subdivision, from which a nail found for the southeast corner of Lot 24, Outlot 22 1/2 of Louis Horst's Subdivision, the northeast corner of Lot 23, Outlot 22 1/2 of Louis Horst's Subdivision, and being in said west right-of-way line of San Antonio Street, bears South  $84^{\circ}55'44''$  East a distance of 120.21 feet (record: South  $84^{\circ}$  East a distance of 120 feet), and continuing along the west line of Lot 23, Outlot 22 1/2 of Louis Horst's Subdivision an additional 22.61 feet (record: 22.5 feet) to a nail found for the southwest corner of Lot 23, Outlot 22 1/2 of Louis Horst's Subdivision and the northwest corner of said Lot 22, Outlot 22 1/2 of Louis Horst's Subdivision, from which a nail found for the southeast corner of Lot 23, Outlot 22 1/2 of Louis Horst's Subdivision, the northeast corner of Lot 22, Outlot 22 1/2 of Louis Horst's Subdivision, and being in the west right-of-way line of San Antonio Street, bears South  $84^{\circ}55'39''$  East a distance of 120.25 feet (record: South  $84^{\circ}$  East a distance of 120 feet), and continuing along the west line of Lot 22, Outlot 22 1/2 of Louis Horst's Subdivision an additional 69.90 feet (record: 70 feet) for an overall distance of 162.55 feet (record: 162.5 feet), to a 1/2" rebar found for the southwest corner of Lot 22, Outlot 22 1/2 of Louis Horst's Subdivision and the northwest corner of Lot 21, Outlot 22 1/2 of Louis Horst's Subdivision, from which a 1/2" rebar found for the southeast corner of Lot 22, Outlot 22 1/2 of Louis Horst's Subdivision, the northeast corner of said Lot 21, and being in the west right-of-way line of San Antonio Street bears South  $84^{\circ}41'59''$  East a distance of 120.17 feet (record: South  $84^{\circ}$  East a distance of 120 feet);

THENCE North  $84^{\circ}41'59''$  West (record: North  $84^{\circ}$  West), crossing through the 20 foot wide alley along a prolongation of the south line of Lot 22, Outlot 22 1/2 of Louis Horst's Subdivision and the north line of Lot 21, Outlot 22 1/2 of Louis Horst's Subdivision, a distance of 10.05 feet to a calculated point in the approximate centerline of the 20 foot wide alley;

THENCE South  $04^{\circ}48'22''$  West, along the approximate centerline of the 20 foot wide alley, a distance of 71.93 feet to a calculated point;

THENCE North  $84^{\circ}43'28''$  West (record: North  $84^{\circ}$  West), crossing through the 20 foot wide alley along a prolongation of the south line of Lot 16, Outlot 23 1/2 of Louis Horst's Subdivision and the north line of Lot 17, Outlot 23 1/2 of Louis Horst's Subdivision, a distance of 10.05 feet to a 1/2" rebar found for the southeast corner of said Lot 16, Outlot 23 1/2 of Louis Horst's Subdivision and the northeast corner of said Lot 17, Outlot 23 1/2 of Louis Horst's Subdivision, from which a 1/2" rebar found for the southwest corner of Lot 16, Outlot 23 1/2 of Louis Horst's Subdivision, the northwest corner of Lot 17, Outlot 23 1/2 of Louis Horst's Subdivision and being in the east right-of-way line of Nueces Street bears North  $84^{\circ}43'28''$  West a distance of 120.04 feet (record: North  $84^{\circ}$  West a distance of 120 feet);

THENCE North  $04^{\circ}48'22''$  East (record: North  $06^{\circ}$  East), along the west line of the 20 foot wide alley and the east line of Lot 16, Lot 15, Lot 14 and Lot 13, all in Outlot 23 1/2 of Louis Horst's Subdivision, passing at a distance of 71.30 feet (record: 70 feet) a nail found for the northeast corner of Lot 16, Outlot 23 1/2 of Louis Horst's Subdivision and the southeast corner of said Lot 15, Outlot 23 1/2 of Louis Horst's Subdivision, from which a nail found for the northwest corner of Lot 16, Outlot 23 1/2 of Louis Horst's Subdivision, the southwest corner of Lot 15, Outlot 23 1/2 of Louis Horst's Subdivision and also being in the east right-of-way line of Nueces Street bears North  $85^{\circ}11'38''$  West a distance of 120.03 feet (record: North  $84^{\circ}$  West a distance of 120 feet), and continuing along the west line of said Lot 15 Outlot 23 1/2 of Louis Horst's Subdivision an additional 70.10 feet (record: 70 feet) to a nail found for the northeast corner of Lot 15, Outlot 23 1/2 of Louis Horst's Subdivision and the southeast corner of said Lot 14, Outlot 23 1/2 of Louis Horst's Subdivision, from which a 1/2" rebar found for the northwest corner of Lot 15, Outlot 23 1/2 of



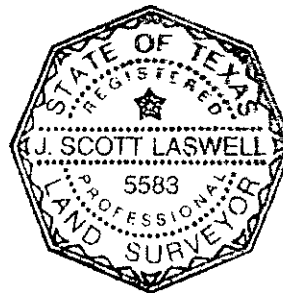
Louis Horst's Subdivision, the southwest corner of Lot 14, Outlot 23 1/2 of Louis Horst's Subdivision and also being in the east right-of-way line of Nueces Street, bears North  $85^{\circ}05'33''$  West a distance of 119.93 feet (record: North  $84^{\circ}$  West a distance of 120 feet), and continuing an additional 22.38 feet (record: 22.5 feet) along the east line of Lot 14, Outlot 23 1/2 of Louis Horst's Subdivision to a 1/2" rebar found for the northeast corner of Lot 14, Outlot 23 1/2 of Louis Horst's Subdivision and the southeast corner of Lot 13, Outlot 23 1/2 of Louis Horst's Subdivision; from which a 1/2" rebar found for the northwest corner of Lot 14, Outlot 23 1/2 of Louis Horst's Subdivision and the southwest corner of Lot 13, Outlot 23 1/2 of Louis Horst's Subdivision and also being in the east right-of-way line of Nueces Street bears North  $84^{\circ}59'47''$  West a distance of 119.93 feet (record: North  $84^{\circ}$  West a distance of 120 feet) and continuing along the east line of Lot 13, Outlot 23 1/2 of Louis Horst's Subdivision an additional 70.57 feet (record: 70 feet) for an overall distance of 234.35 feet (record: 232.5 feet) to the POINT OF BEGINNING.

This parcel contains 0.092 of one acre (3,984 square feet) of land, more or less, out of Division D, Louis Horst's Subdivision in Travis County, Texas.

Bearing Basis: Texas State Plane Coordinate System, Central zone (4203), NAD 83/96 CORS.

Convergence:  $01^{\circ}20'01''$

Combined Scale Factor: 0.99993556



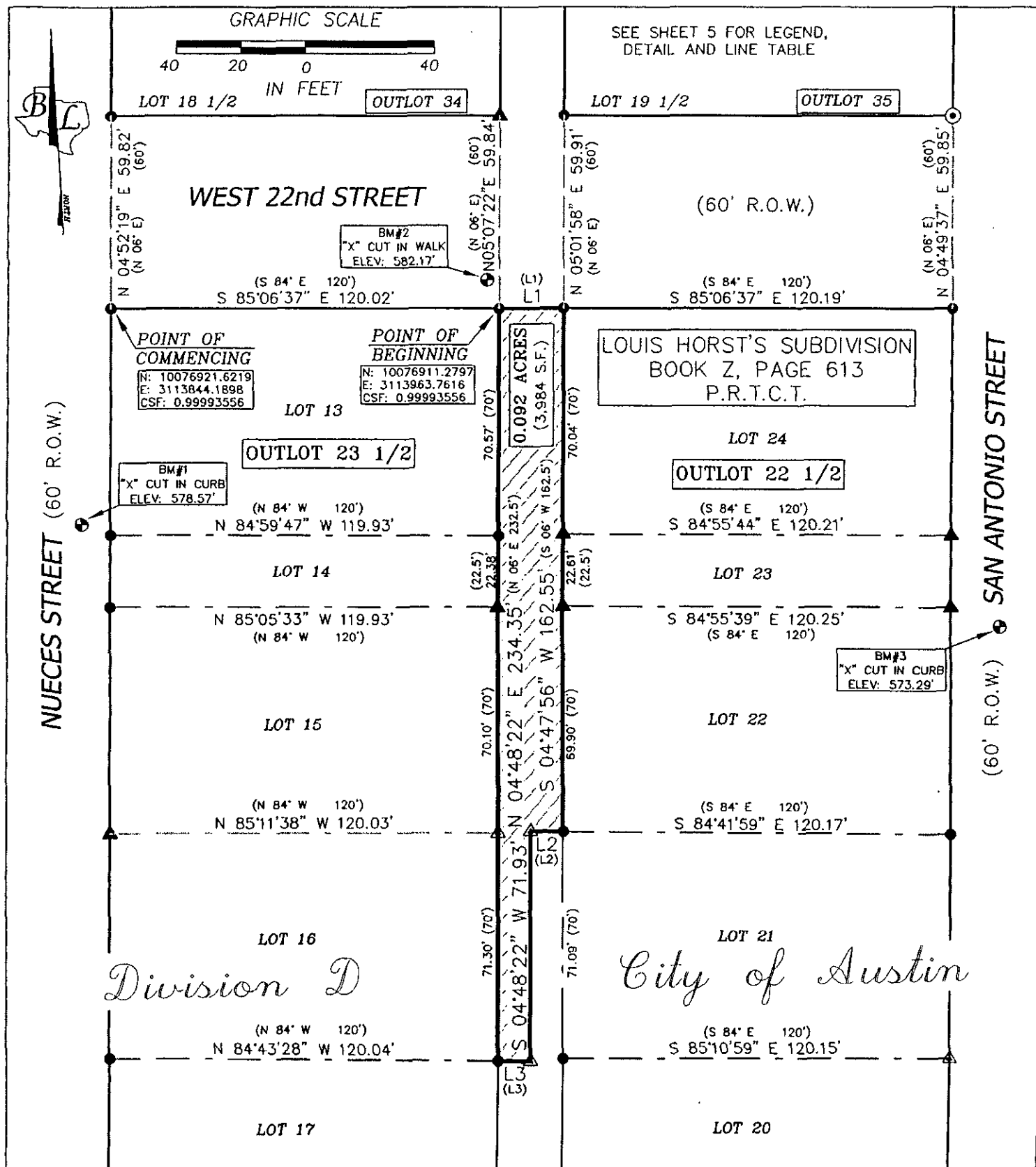
J. Scott Laswell 8/15/11  
J. Scott Laswell Date  
Registered Professional Land Surveyor  
State of Texas No. 5583

File: S:\Projects\22 @Nueces\Docs\Field Notes\Revised Alley Vacation 1\_fn.doc  
Dwg: S:\Projects\22@Nueces\Dwg\Revised Alley Vacation 1.dwg

FIELD NOTES REVIEWED

By: Clark Daniel Date 09.13.2011

Engineering Support Section  
Department of Public Works  
and Transportation



SKETCH TO ACCOMPANY FIELD NOTES OF  
0.092 OF ONE ACRE (3,984 S.F.) OF LAND IN  
DIVISION D OF THE CITY OF AUSTIN AND BEING A  
PORTION OF A TWENTY FOOT WIDE ALLEY BETWEEN  
OUTLOT 22 1/2 AND OUTLOT 23 1/2,  
AS DEDICATED BY LOUIS HORST'S SUBDIVISION;  
A SUBDIVISION OF RECORD IN BOOK Z, PAGE 613  
OF THE PLAT RECORDS OF TRAVIS COUNTY, TEXAS

**BASELINE LAND SURVEYORS, INC.**

PROFESSIONAL LAND SURVEYING SERVICES

8333 CROSS PARK DRIVE

AUSTIN, TEXAS 78754

OFFICE: 512.374.9722 FAX: 512.873.9743

scott-baseline@austin.tx.com

File: \Projects\22nd @ Nueces\Draw\Revised Alley Vacation.dwg

Job No.

Snapshot:

Scale (Hor.): 1"=40'

Scale (Vert.):

Date: 08/18/11

Checked By: RLW

Drawn By: JSL

SHEET

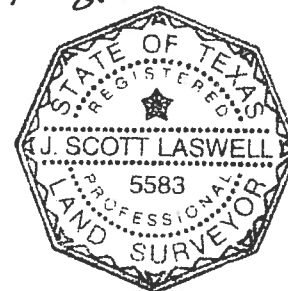
04 of 06

## LEGEND

●	1/2" REBAR FOUND
⊙	IRON PIPE FOUND
▲	NAIL FOUND
△	CALCULATED POINT
⊕	BENCHMARK
S.F.	SQUARE FEET
R.O.W.	RIGHT OF WAY
( )	RECORD INFO. PER BK. Z. PG. 594
P.R.T.C.T.	PLAT RECORDS OF TRAVIS COUNTY, TEXAS
C.S.F.	COMBINED SCALE FACTOR

LINE TABLE		
LINE	BEARING	LENGTH
L1	S 85°06'37" E	20.07'
(L1)	S 84° E	20'
L2	N 84°41'59" W	10.05'
(L2)	N 84° W	
L3	N 84°43'28" W	10.05'
(L3)	N 84° W	

*J. Scott Laswell*  
8/19/11



BEARING BASIS: TEXAS STATE PLANE COORDINATE SYSTEM, CENTRAL ZONE (4203), NAD 83/96 CORS.

CONVERGENCE: 01°20'01"

COMBINED SCALE FACTOR: 0.99993556

SKETCH TO ACCOMPANY FIELD NOTES OF  
0.092 OF ONE ACRE (3,984 S.F.) OF LAND IN  
DIVISION D OF THE CITY OF AUSTIN AND BEING A  
PORTION OF A TWENTY FOOT WIDE ALLEY BETWEEN  
OUTLOT 22 ½ AND OUTLOT 23 ½,  
AS DEDICATED BY LOUIS HORST'S SUBDIVISION;  
A SUBDIVISION OF RECORD IN BOOK Z, PAGE 613  
OF THE PLAT RECORDS OF TRAVIS COUNTY, TEXAS

### BASELINE LAND SURVEYORS, INC.

PROFESSIONAL LAND SURVEYING SERVICES

8333 CROSS PARK DRIVE

AUSTIN, TEXAS 78754

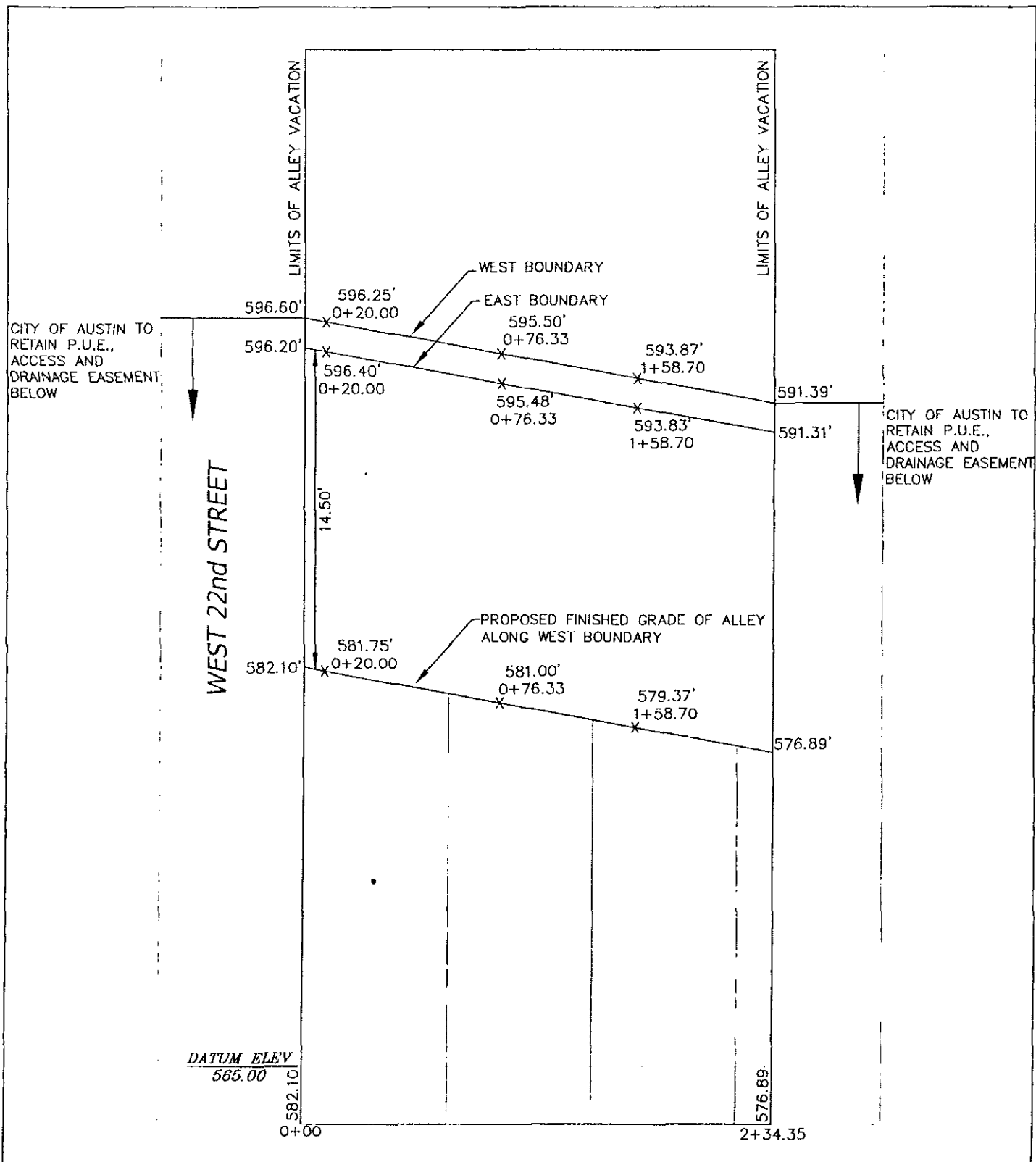
OFFICE: 512.374.9722 FAX: 512.873.9743

scott-baseline@austin.tx.com

File: \Projects\22nd @ Nueces\Drawn\Revised Alley Vacation.dwg			
Job No.	Snapshot:		
Scale (Hor.): 1"=40'	Scale (Vert.):	1"=10'	
Date: 08/18/11	Checked By: RLW	Drawn By: JSL	

SHEET

05 of 06



SKETCH TO ACCOMPANY FIELD NOTES OF  
0.092 OF ONE ACRE (3,984 S.F.) OF LAND IN  
DIVISION D OF THE CITY OF AUSTIN AND BEING A  
PORTION OF A TWENTY FOOT WIDE ALLEY BETWEEN  
OUTLOT 22  $\frac{1}{2}$  AND OUTLOT 23  $\frac{1}{2}$ ,  
AS DEDICATED BY LOUIS HORST'S SUBDIVISION;  
A SUBDIVISION OF RECORD IN BOOK Z, PAGE 613  
OF THE PLAT RECORDS OF TRAVIS COUNTY, TEXAS

**BASELINE LAND SURVEYORS, INC.**  
PROFESSIONAL LAND SURVEYING SERVICES  
8333 CROSS PARK DRIVE  
AUSTIN, TEXAS 78754  
OFFICE: 512.374.9722 FAX: 512.873.9743  
scott-baseline@austin.tx.com

File: \Projects\22nd @ Nueces\Draw\Revised Alley Vacation 1.dwg  
Job No: \_\_\_\_\_ Snapshot: \_\_\_\_\_  
Scale (Hor.): Not to Scale Scale (Vert.): Not to Scale  
Date: 08/18/11 Checked By: RLW Drawn By: JSL

SHEET  
06 of 06