

NEIGHBORHOOD PLAN AMENDMENT REVIEW SHEET

NEIGHBORHOOD PLAN: East MLK Jr. Combined Neighborhood Plan

CASE#: NPA-2011-0015.01 **DATE FILED:** July 28, 2011 (in-cycle)

PC DATE: November 8, 2011
October 25, 2011
October 11, 2011

ADDRESS/ES: 6406 Garden View Drive

SITE AREA: Approx. 5.7 acres

APPLICANT: City of Austin, Parks and Recreation Department

OWNER: City of Austin, Parks and Recreation Department

AGENT: Greg Montes, City of Austin, Parks and Recreation Department

TYPE OF AMENDMENT:

Change in Future Land Use Designation

From: Mixed Residential & Mixed Use **To:** Recreation/Open Space

Base District Zoning Change

Related Zoning Case: C14-2011-0086 (SR)
From: SF-3-NP **To:** P-NP

NEIGHBORHOOD PLAN ADOPTION DATE: November 7, 2002

PLANNING COMMISSION RECOMMENDATION: On November 8, 2011, the motion to approve staff's recommendation for Recreation/Open Space, was approved on the consent agenda by Commissioner Sandra Kirk's motion, Commissioner Mandy Dealey seconded the motion on a vote of 7-0; Commissioners Danette Chimenti and Donna Tiemann were absent.

STAFF RECOMMENDATION: Recommended

BASIS FOR STAFF'S RECOMMENDATION: The plan amendment request supports the following Goals, Objectives, and Recommendations in the E MLK Combined Neighborhood Plan:

Goal 13 - Create more public open space, including parks and green spaces, improve existing parks and increase recreational amenities in the neighborhood.

Objective 13.1: Provide more recreational activities for Youth and Seniors.

Action 176- Promote existing youth and senior services and programs.

Action 177- Increase senior recreational activities at the recreation centers in the East and Northeast parts of the planning area. (eg. Givens and Dottie Jordan)

Objective 13.2: Maintain and improve neighborhood parks, add new parks and improve undeveloped green spaces.

Action 179-
Develop a hike and
bike trail along Big
Walnut Creek.

BACKGROUND: The application was filed on July 28, 2011 during the open period for City Council-approved neighborhood planning areas located on the east side of I.H.-35.

The application to change the future land use map (FLUM) from Mixed Residential and Mixed Use to Recreation/Open Space is part of the City of Austin's Parks and Recreation Departments plan to build a 7.5 acres trail on the eastside of Austin. See map on page six.

The zoning change request is to rezone the City-owned property from SF-3-NP to P-NP.

The East MLK Jr. Combined Neighborhood Plan was completed under the City of Austin's Neighborhood Planning Program and was adopted as part of the Austin Tomorrow Comprehensive Plan on November 7, 2002. The combined planning area is bounded by Airport Blvd., Anchor Lane and Manor Rd. on the West; Loyola Lane, Ed Bluestein Blvd. and Little Walnut Creek on the North; the former Missouri-Kansas Railroad right-of-way on the East; and the Austin NW Railroad on the South.

PUBLIC MEETINGS: The plan amendment community meeting was held on Tuesday, September 27, 2011. Two hundred and twenty-two notices were mailed to property owners and utility account holders within 500 feet of the property, in addition to the neighborhood organizations registered on the City's community registry. Eighteen people attended the meeting.

After Greg Montes, PARD, explained the department is planning to build a 7.3 mile continuous trail on the east side of Austin, the following questions were asked:

Q. Why build a concrete trail and not crushed granite?

A. Probably because concrete has less maintenance than crushed gravel.

Q. Are there future plans to connect with other trails?

A. Yes, first the north and south parts of the trail.

Q. Any plans to make east/west trails more direct?

A. Eventually we will, but not at this time.

Q. Is all the property city-owned or will the City need to purchase private property?

A. PARD has easements with Austin Energy on some property, but the City owns most of the land.

Q. Will there be access to the trail from Garden View Drive?

A. Yes, at several points.

Q. Will the City-owned property to be rezoned from SF-3-NP to P-NP cause problems for the adjacent properties already zoned SF-3-NP in how they can develop their property?

A. No.

Members of the E. MLK Neighborhood Planning Area who attended the meeting did not appear to have many concerns about the proposed FLUM and zoning change.

Letters in support of the zoning and land use change are provided by the E. MLK Planning Contact Team and property owners.

CITY COUNCIL DATE:

November 3, 2011	<u>ACTION:</u> Postponed to December 8, 2011
December 8, 2011	<u>ACTION:</u> Postponed to January 12, 2012
January 12, 2012	<u>ACTION:</u> Postponed to February 2, 2012
February 2, 2012	<u>ACTION:</u> Pending

CASE MANAGER: Maureen Meredith

PHONE: (512) 974-2695

EMAIL: Maureen.meredith@austintexas.gov

To: City of Austin Planning Commission

Re: NPA-2011-0015.01 - Proposed FLUM change from Mixed Residential to

Recreation/Open Space and C14-2011-0086 - Proposed zoning change from SF-3-NP to P-NP

Date: October 10, 2011

On Tuesday 27, 2011 the East MLK Combined Neighborhood Contact Team partook in the Neighborhood Plan Amendment Meeting to discuss the proposed land use of 6406 Garden View Lane. We support the proposed FLUM change from Mixed Residential to Recreation/Open space and the zoning change to accommodate. We are supportive of the hike and bike trail to be constructed in the planning area to create more recreational opportunities for residents and transportation options for bicycle commuters.

Please contact us if you have any questions or concerns:

Joy Casnovsky, East MLK Combined Neighborhood Contact Team Chair
512.589.1090

-----Original Message-----

From: Kevin Creamer [

Sent: Wednesday, September 21, 2011 12:48 PM

To: Meredith, Maureen

Subject: Case NPA-2011-0015.01

Maureen,

I'm unable to make the Sept 27th zoning meeting on the Garden View Lane rezoning, but wanted to let you know I am in favor to a change to Recreation/Open Space.

Kevin Creamer
5203 Heritage Village Dr
Austin, TX 78724

PUBLIC HEARING COMMENT FORM

If you use this form to comment, it may be submitted to:

City of Austin

Planning and Development Review Department

Maureen Meredith

P. O. Box 1088

Austin, TX 78767-8810

RECEIVED
11/1/2011

If you do not use this form to submit your comments, you must include the name of the body conducting the public hearing, its scheduled date, the Case Number and the contact person listed on the notice in your submission.

Case Number: NPA-2011-0015.01

Contact: Maureen Meredith

Public Hearings-

Planning Commission: 10/25/2011

City Council: 11/03/2011

☒ I am in favor
☐ I object

Nina L. Batts

Your Name (please print)

5206 King Charles St. Austin, Texas 78724

Your address(es) affected by this application

Nina L. Batts *10/3/2011*

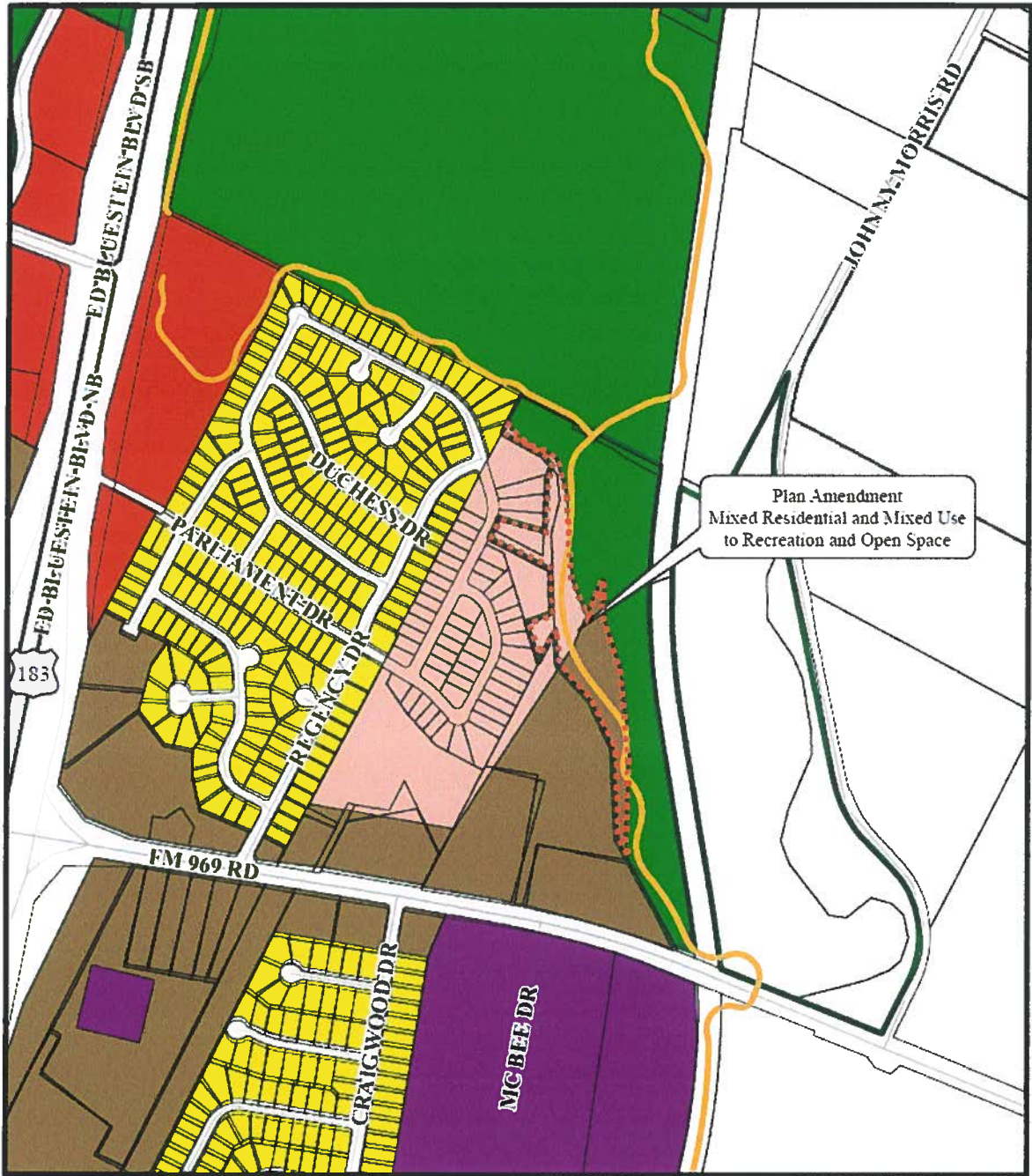
Signature

Date

Comments:

I am very much in favor of this Resolution signed by the Council.

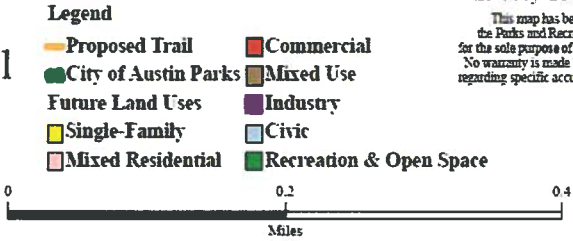
C/8 Support



FLUM Map:
Southern Walnut Creek Trail

25 July 2011 GM

This map has been produced by the Parks and Recreation Department for the sole purpose of geographic reference. No warranty is made by the City of Austin regarding specific accuracy or completeness.





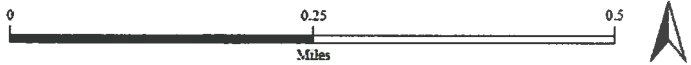
Zoning Map:
Southern Walnut Creek Trail

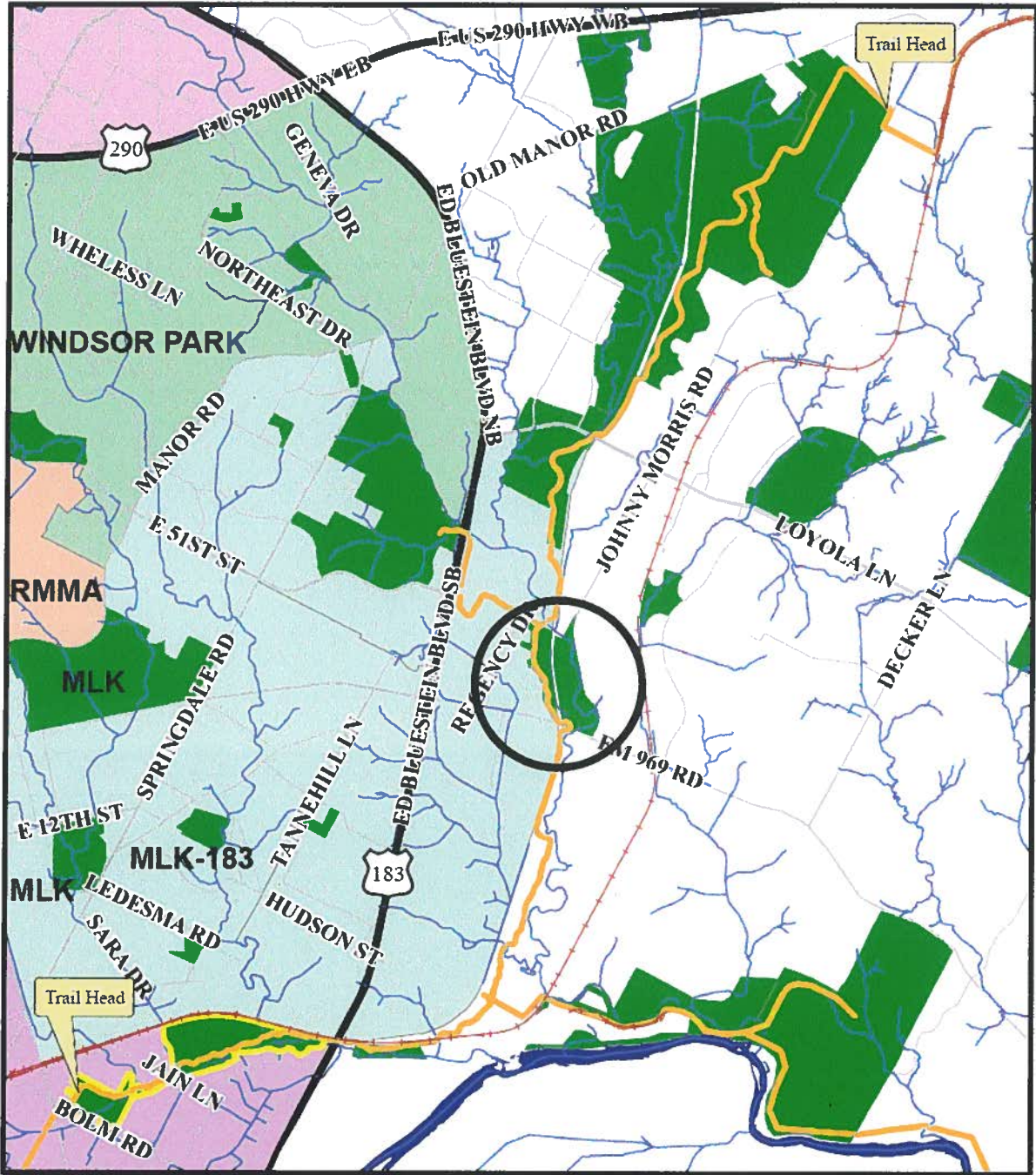
Legend

25 July 2011 GM

- Proposed Trail
- Park Property to be Rezoned
- City of Austin Parks

This map has been produced by the Parks and Recreation Department for the sole purpose of geographic reference. No warranty is made by the City of Austin regarding specific accuracy or completeness.





Zoning Map: Southern Walnut Creek Trail

Legend

- Proposed Trail
- Park Property to be Rezoned
- City of Austin Parks

5 August 2011 GM
This map has been produced by
the Parks and Recreation Department
for the sole purpose of geographic reference.
No warranty is made by the City of Austin
regarding specific accuracy or completeness

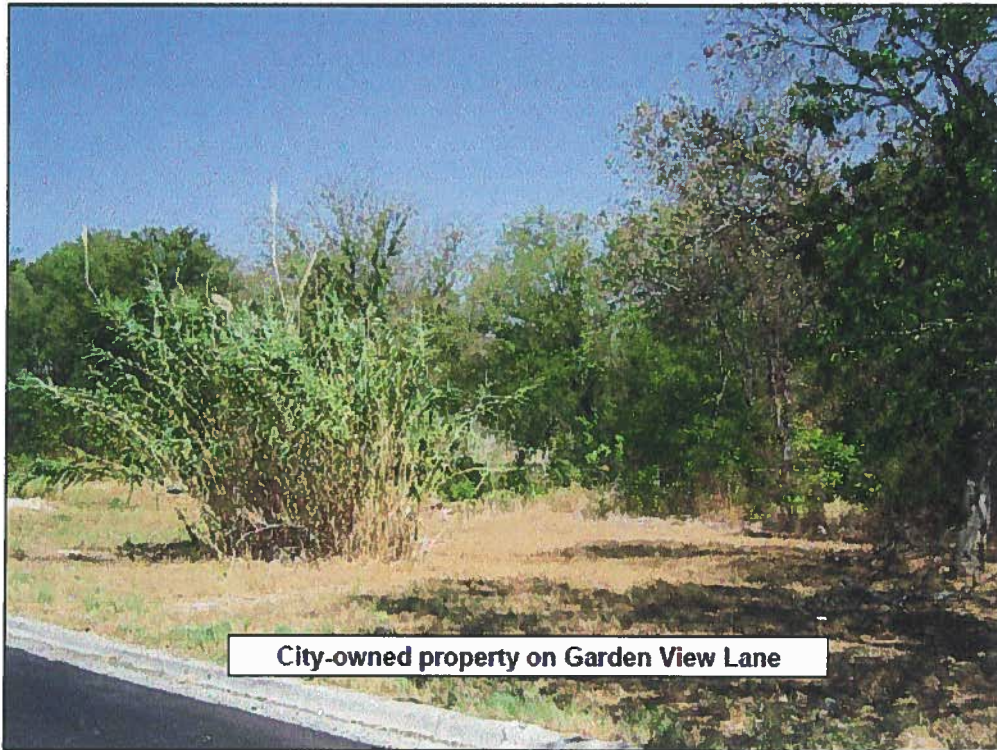




City-owned property on Garden View Lane



City-owned property on Garden View Lane



City-owned property on Garden View Lane



Homes on Garden View Lane

