



Dolores Sandmann

County Extension Director

Texas AgriLIFE Extension Service-Travis County

DSandmann@ag.tamu.edu

512-854-9600

AGRILIFE EXTENSION

*Making a Difference
in Travis County*



*Agri***LIFE EXTENSION**

Texas A&M System



Extension Mission

To provide quality, relevant outreach and continuing education programs and services to the people of Texas.

Extension Program Areas Include:

- Ag & Natural Resources
- Family & Consumer Sciences
- 4-H & Youth Development
- Community Development



HORTICULTURE PROGRAM



DAPHNE RICHARDS
County Extension Agent
Horticulture

- Home Horticulture
- Urban Agriculture
- Green Industry
- Central Texas Gardener
- Master Gardener Program
- <http://travis-tx.tamu.edu>

EAST AUSTIN GARDEN FAIR

A Passion For Plants

Saturday, April 14

10am-2pm

Zaragoza Recreation Center

2608 E. Gonzales Street



<http://travis-tx.tamu.edu>

FAMILY & CONSUMER SCIENCE PROGRAM



AMY HARRIS

County Extension Agent
Family & Consumer Science

- Nutrition, Health & Wellness
- Financial Literacy
- Parenting & Child Dev.
- SNAP-Ed. Program
- <http://travis-tx.tamu.edu>

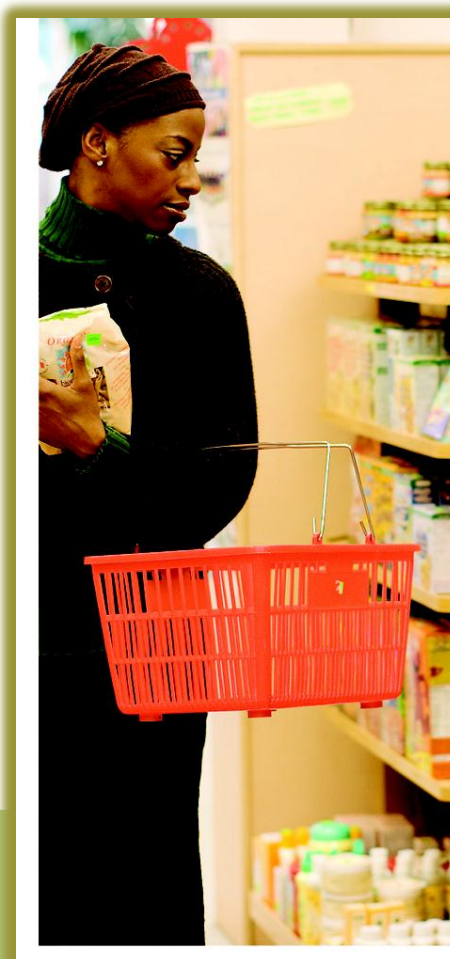


SNAP-ED PROGRAM

BLT Success Story:

"I buy more fresh products than products that are already made. I try to compare different brands by reading the labels and getting the one that is the healthiest and by me doing this I have been able to lose 10 pounds."

-Bentura A.



URBAN YOUTH DEVELOPMENT PROGRAM



LYDIA DOMARUK

County Extension Agent
Urban Youth Development

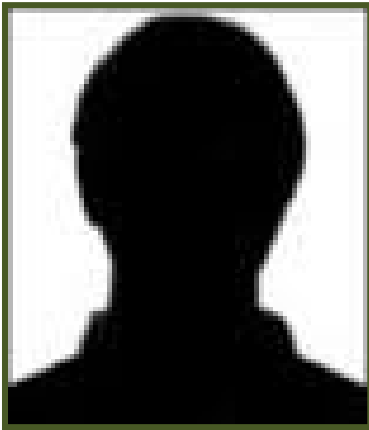
- 4-H CAPITAL Program
- 4-H AmeriCorps Project
- After-School Programs
- Summer Camps
- <http://travis-tx.tamu.edu>

AFTER-SCHOOL GARDEN PROJECT

17 schools
participate in the
JMG (Junior Master
Gardener) program.



URBAN AGRICULTURE PROGRAM



- Food & Fiber Industry
- Urban Agriculture
- Protecting our Environment
- <http://travis-tx.tamu.edu>

CURRENTLY VACANT

County Extension Agent

Agriculture & Natural Resources

QUESTIONS





THANK YOU!

Dolores Sandmann

<http://travis-tx.tamu.edu>