

Similar 6/6 Duplex turns into a 10/6 after CO renting for \$10,000/month

Search Results

[Get Directions](#)

[Apply Online](#)

[How do I view this property?](#)

[Back](#)

2800A San Pedro

[Click image to enlarge](#)



Status: Pre Lease
Location: Austin
Area: West Campus
Rent: \$5,000.00
Type: Duplex
Living Areas: 1
Bedrooms: 5
Bathrooms: 3

Unit Description:
New construction in the heart of West Campus! www.tourfactory.com/782163

Search Results

[Get Directions](#)

[Apply Online](#)

[How do I view this property?](#)

[Back](#)

2800B San Pedro

[Click image to enlarge](#)

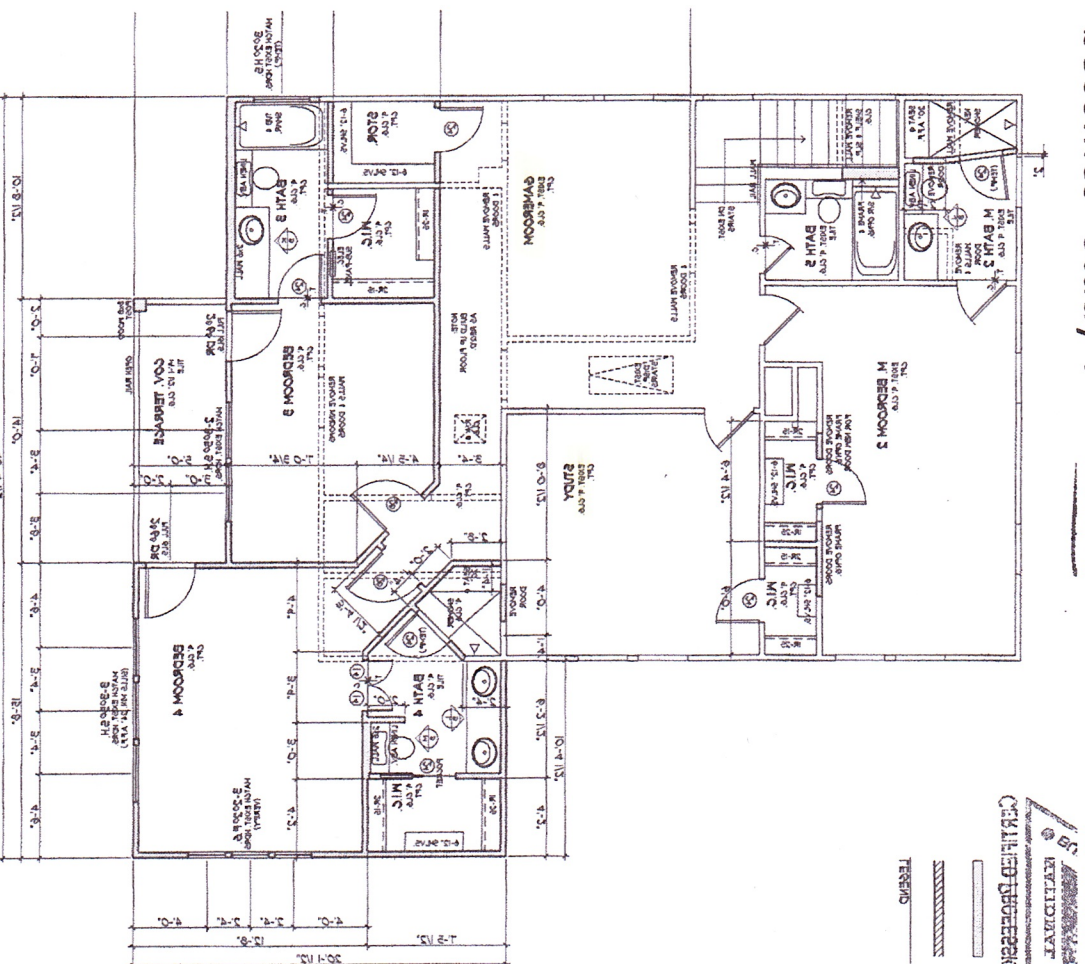
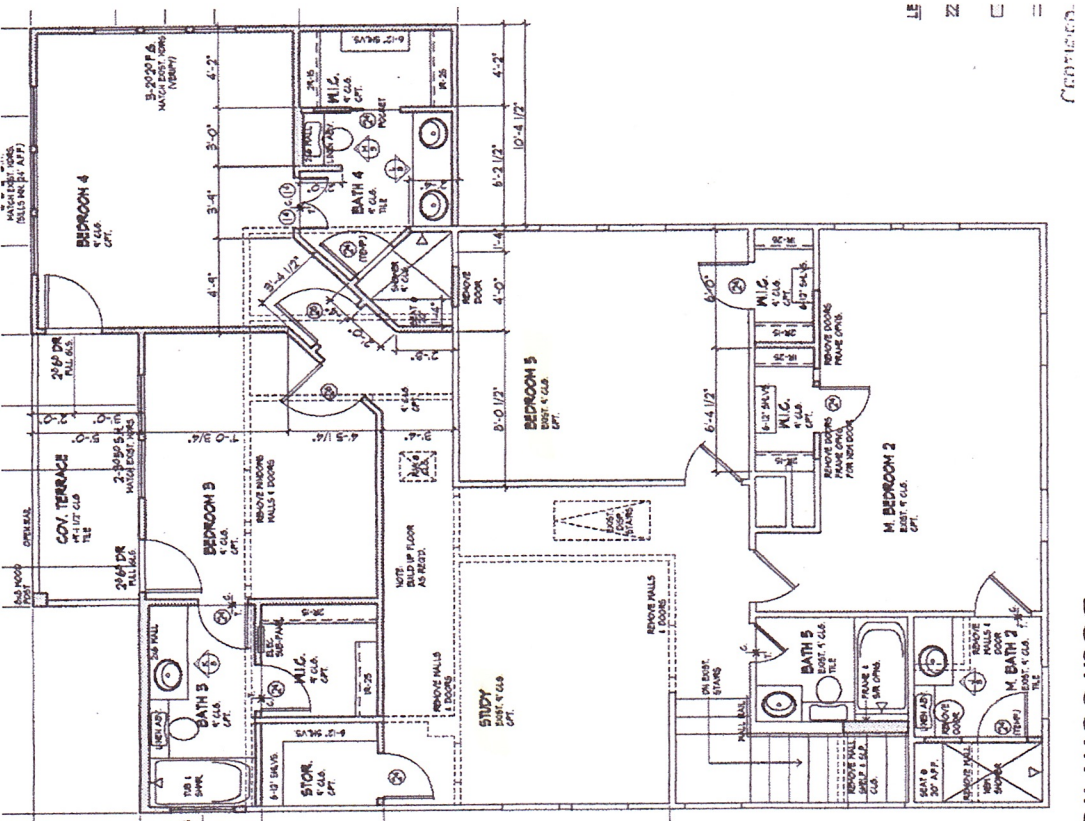


Status: Pre Lease
Location: Austin
Area: West Campus
Rent: \$5,000.00
Type: Duplex
Living Areas: 1
Bedrooms: 5
Bathrooms: 3

Unit Description:
www.tourfactory.com/782163

Label Game

3005 Washington Ave- During the permitting process, "Study" becomes "Gameroom",
 "Bedroom #5" becomes "Study".



1917 David Plans:

10 bedrooms

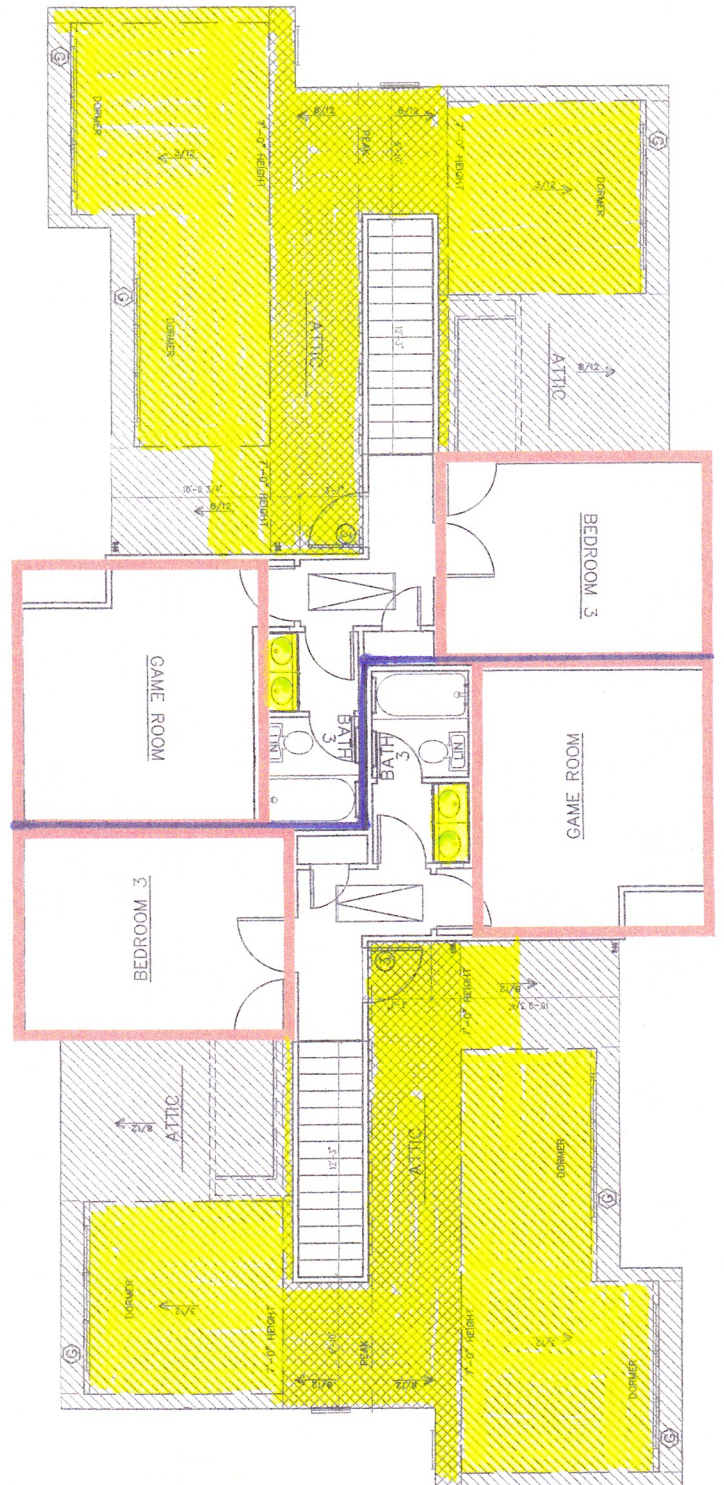
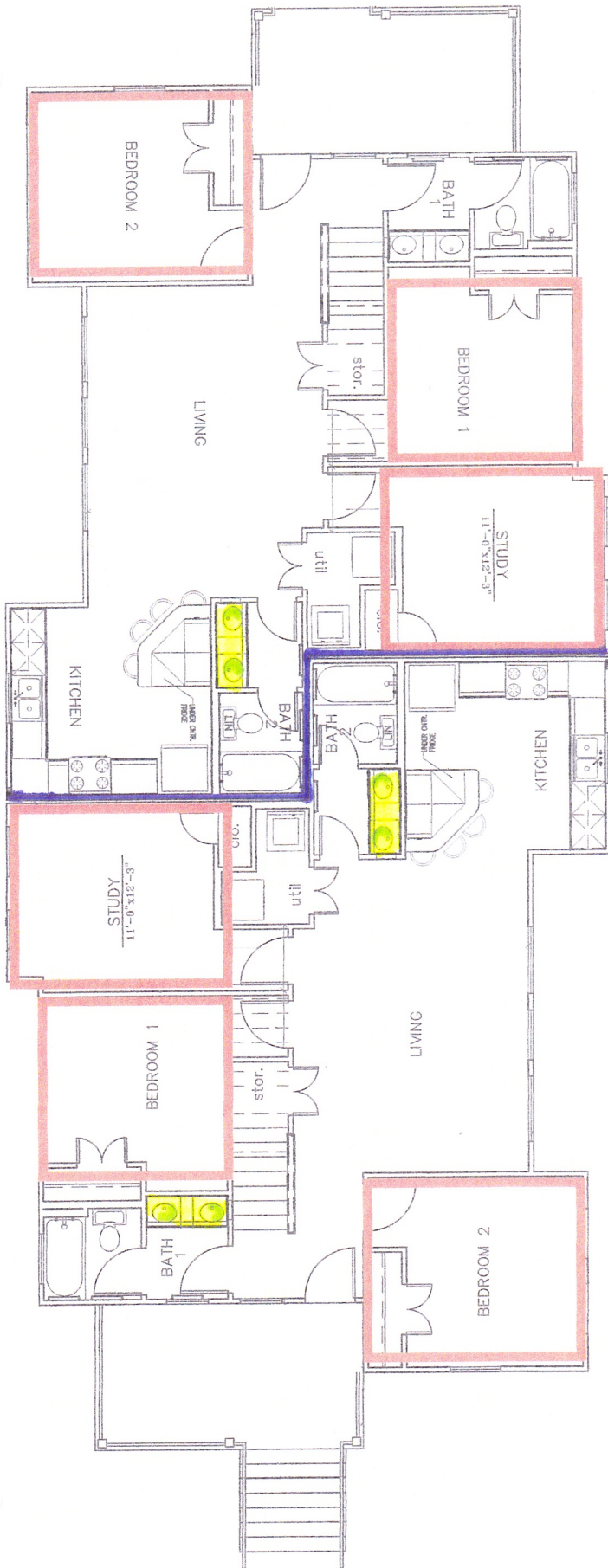
12 bathroom lavatory sinks

6 bathtubs

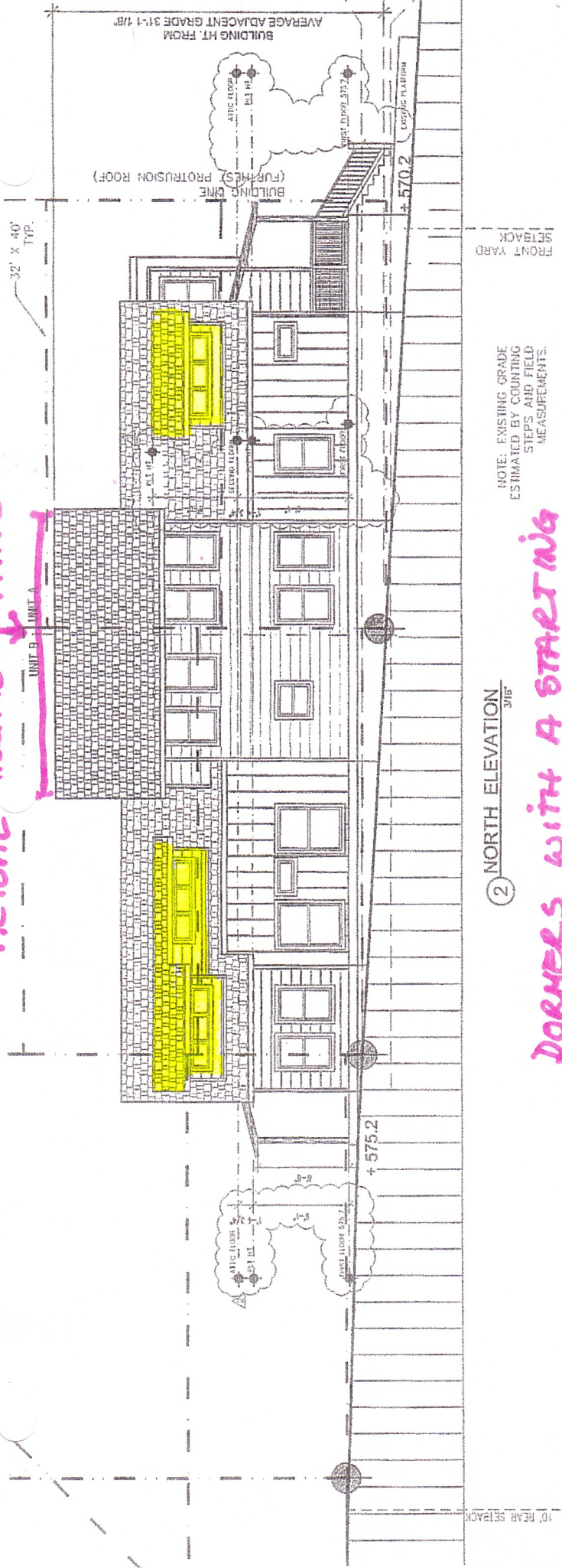
840 square feet of uninhabitable storage space

1294 square feet of potentially habitable storage space

Maximum total occupancy: 6 unrelated persons



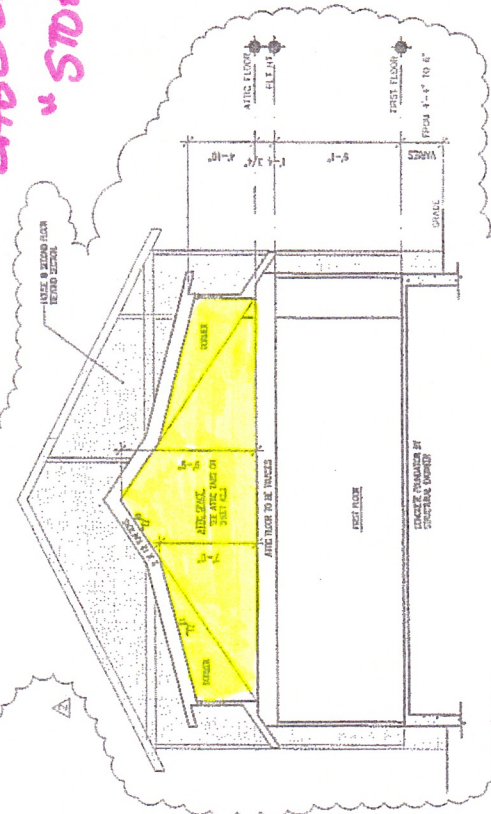
ACTUAL STORAGE → ATTIC



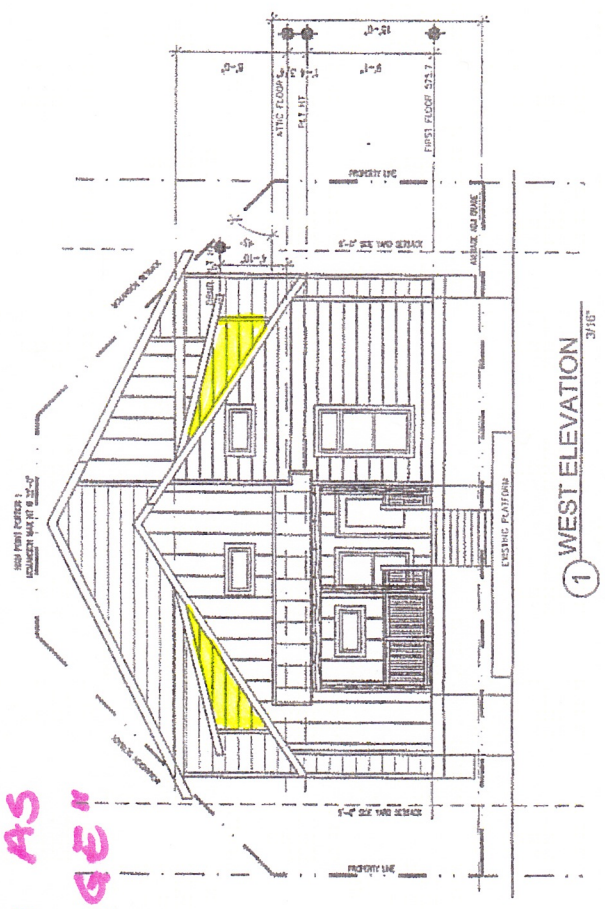
② NORTH ELEVATION 3/16"

DORMERS WITH A STARTING HEIGHT OF 4'10", UNDOUBTEDLY ADD MASS, AND CREATE A HABITABLE ATTIC SPACE LABELED AS "STORAGE"

SECTION ADDED TO HELP WITH ATTIC SPACE CLARIFICATION, PLT THIS, ATTIC'S, ETC.



③ ATTIC SECTION 3/16"



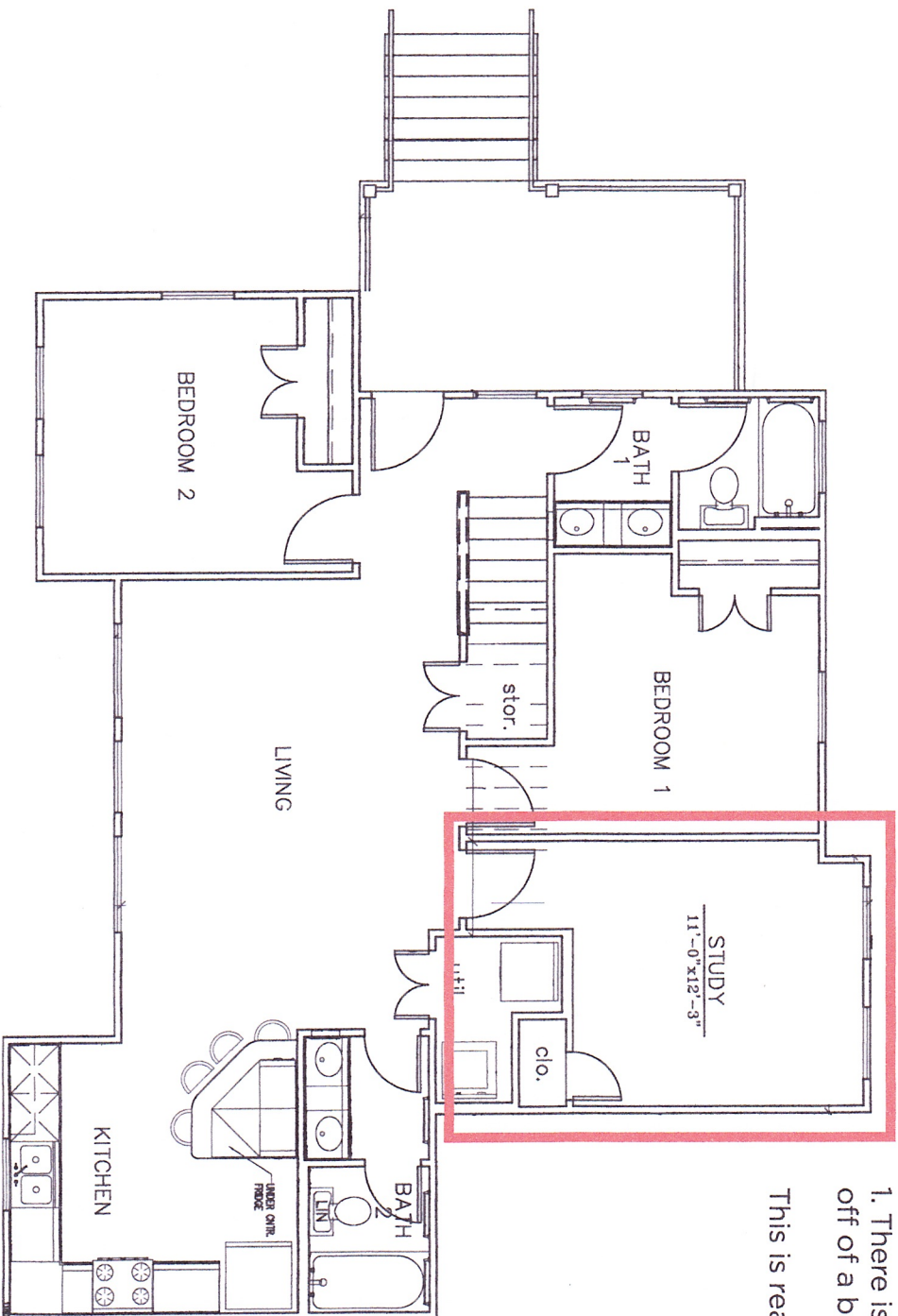
① WEST ELEVATION 3/16"

ALL ELEVATIONS ARE SHOWN FROM THE FRONT ELEVATION AND ELEVATIONS ARE IDENTICAL TO THE REAR ELEVATION. SEE AT 10 FOR ADDITIONAL INFORMATION. SEE AT 10 FOR ADDITIONAL INFORMATION. SEE AT 10 FOR ADDITIONAL INFORMATION.

MATERIAL KEY

1	2	3	4
5	6	7	8
9	10	11	12
13	14	15	16

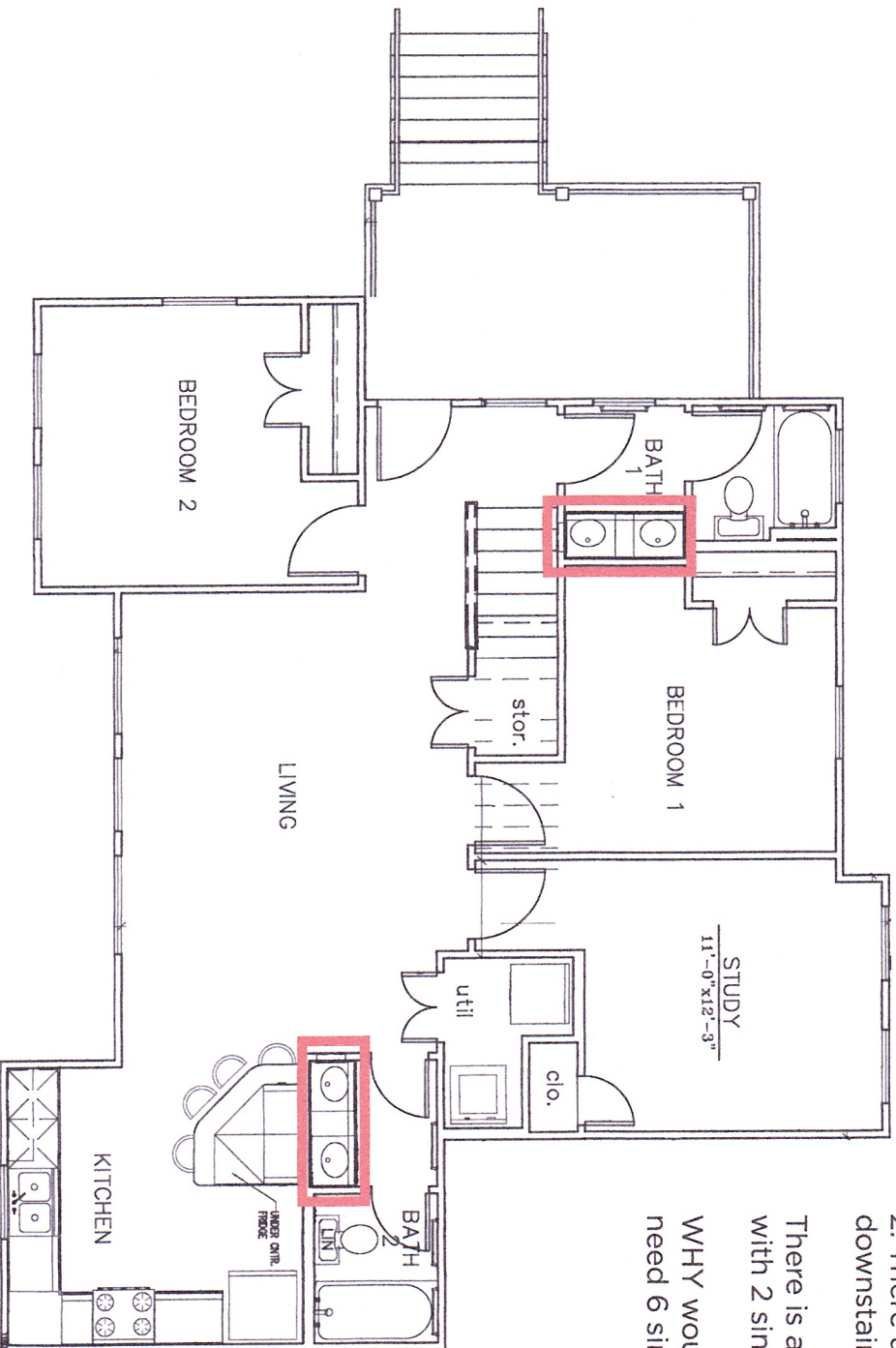
Plans for 1917 David Street
(lower level for only half of the building)



1. There is a "study" with a closet just off of a bathroom.

This is really going to be a bedroom.

Plans for 1917 David Street
(lower level for only half of the building)



2. There are 2 full bathrooms downstairs with 4 sinks.

There is a full bathroom upstairs with 2 sinks.

WHY would just 3 people need 6 sinks?

Plans for 1917 David Street (upper level for only half of the building)

2. (continued)
There are 2 full bathrooms downstairs with 4 sinks.
There is a full bathroom upstairs with 2 sinks.
WHY would just 3 people need 6 sinks?

