

# Barton Springs Pool

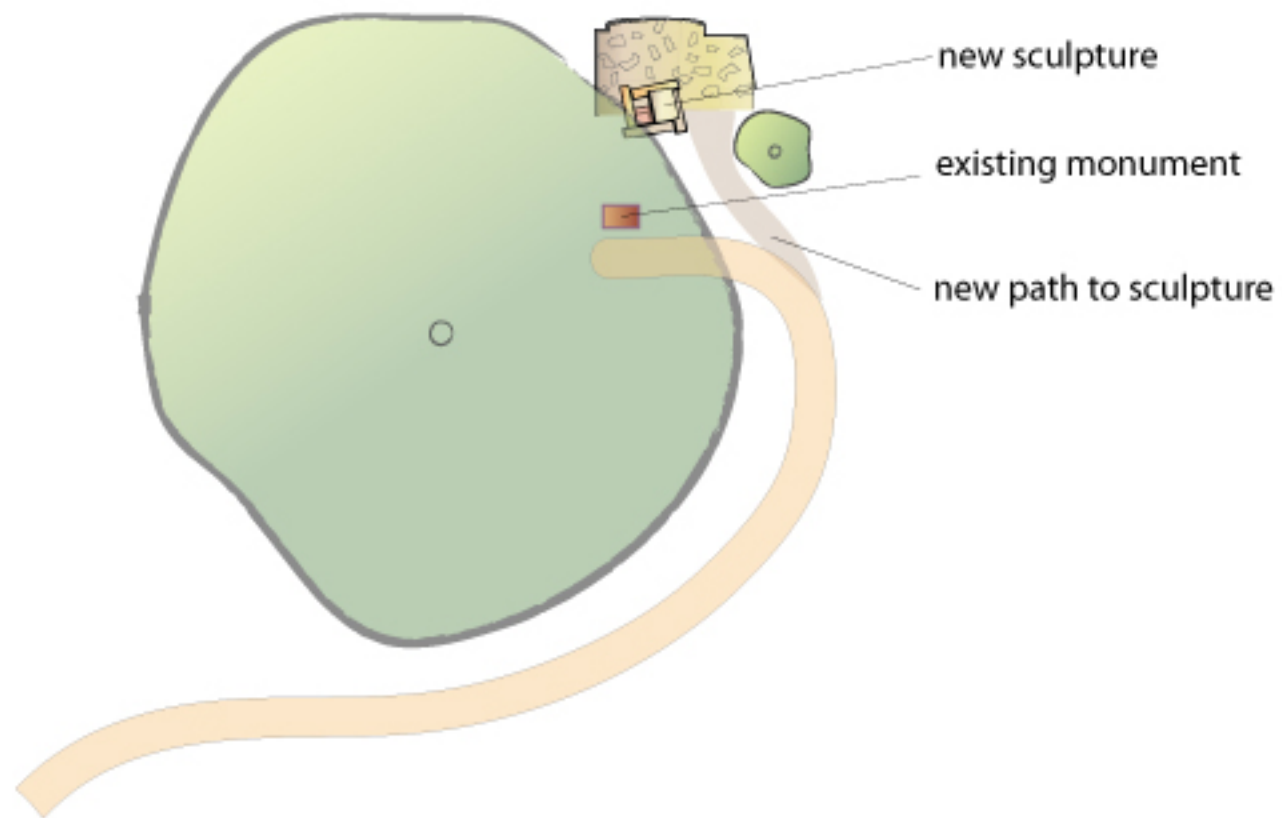
## Current Schematic Plan

AIPP artwork is being proposed to be placed approximately where the "E" is. Artwork would eliminate 12-foot circular overlook pad.

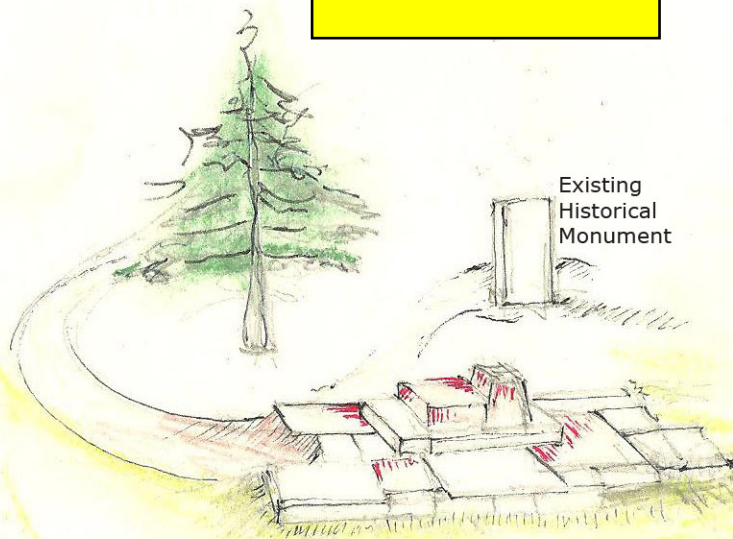


## Revisions to the Plan:

1. Relocated Pathway to Area E outside Critical Root Zone of trees.
2. Reduced Diameter of Stone area at Overlook from 18' to 12 feet.
3. Relocated Bike Parking area to front on Hike and Bike Trail.
4. Modified South Entry Gate and Stone Columns.



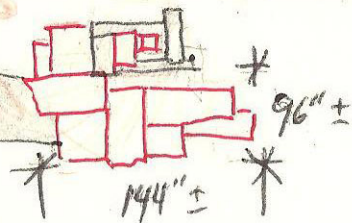
Proposed Artwork





Existing Historical  
Monument

Decomposed  
Granite Gravel  
Trail



Plan View

