



BOARDWALK TRAIL AT LADY BIRD LAKE

**PARKS AND RECREATION BOARD
NAVIGATION COMMITTEE
5/14/2012**

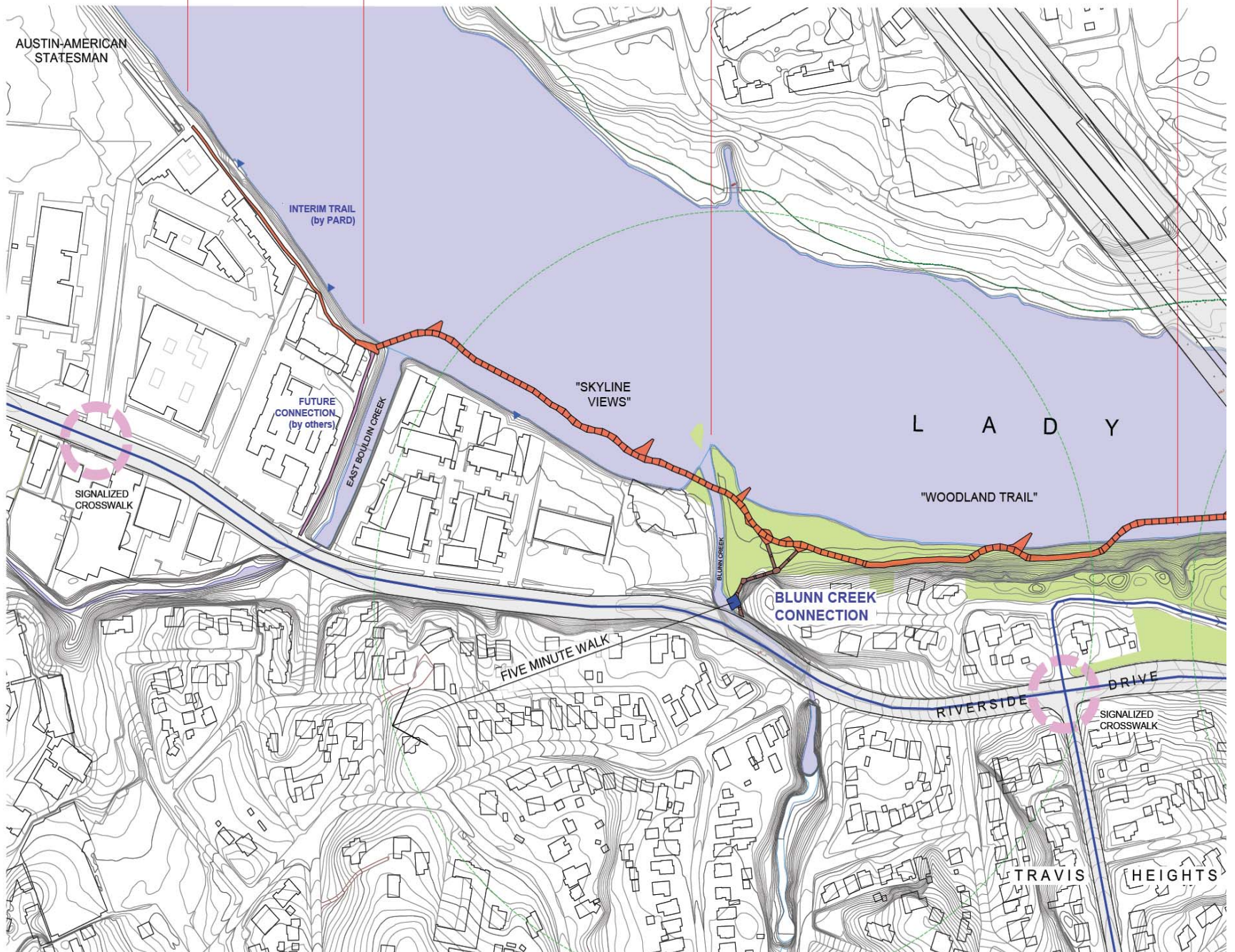
PROJECT SUMMARY

- Objective – Safe, attractive, multi-use trail link
- Timeline
 - City design began 8/08 w/public input
 - Preliminary alignment approved by Council 3/09
 - Construction funding from 2010 Mobility Bond and The Trail Foundation
 - Final permitting currently underway
 - Bid approval expected 5/26/12
 - Construction to begin in 2012; completed 2013
- Seeking Recommendations for Approval of Fill and Shoreline Modification in Lady Bird Lake

EAST RIVERSIDE
750 ft.

SKYLINE SEGMENT
1,030 ft.

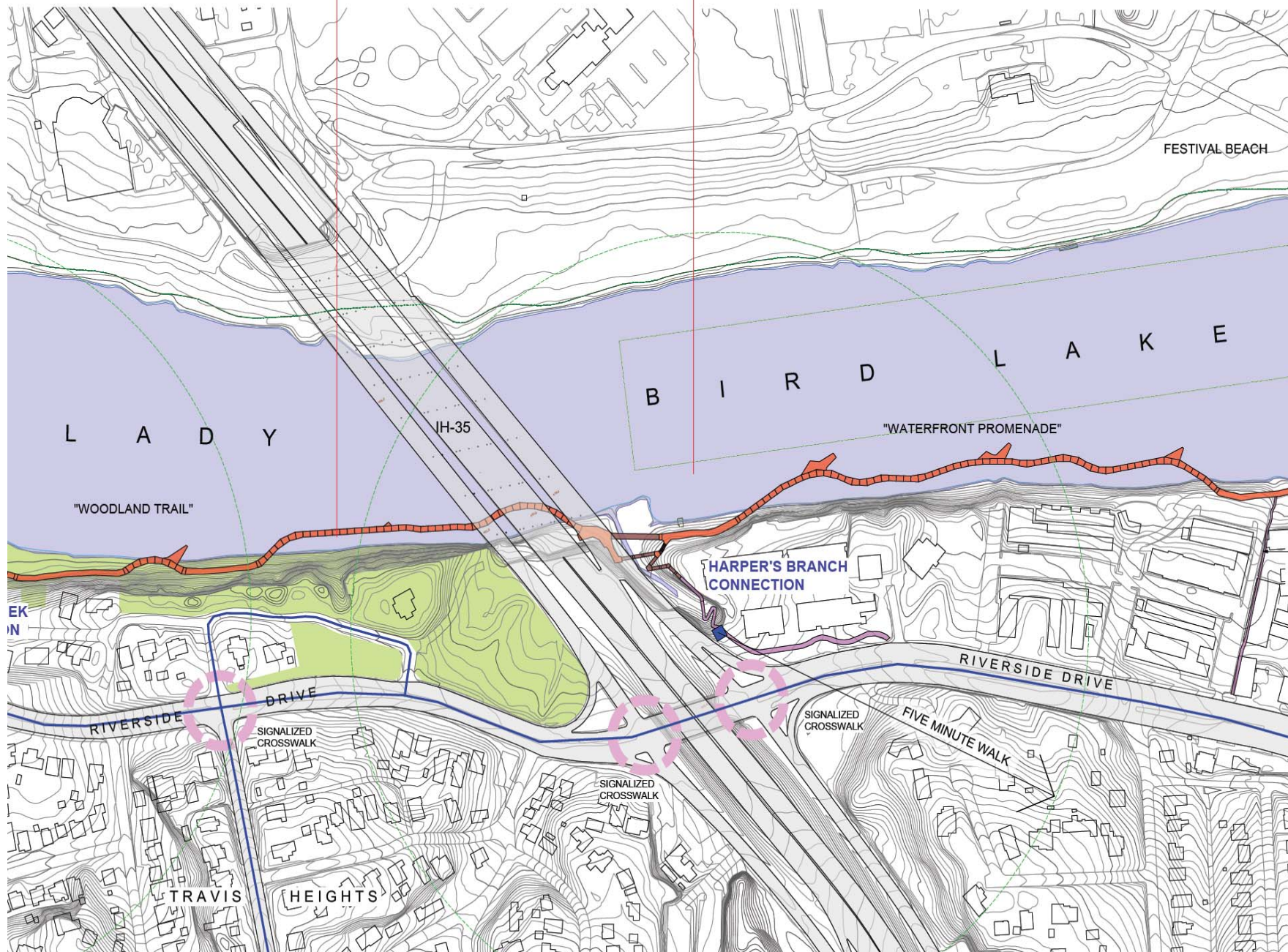
WOODED CORRIDOR
1,370 ft.



WOODED CORRIDOR
1,370 ft.

IH-35 SEGMENT
980 ft.

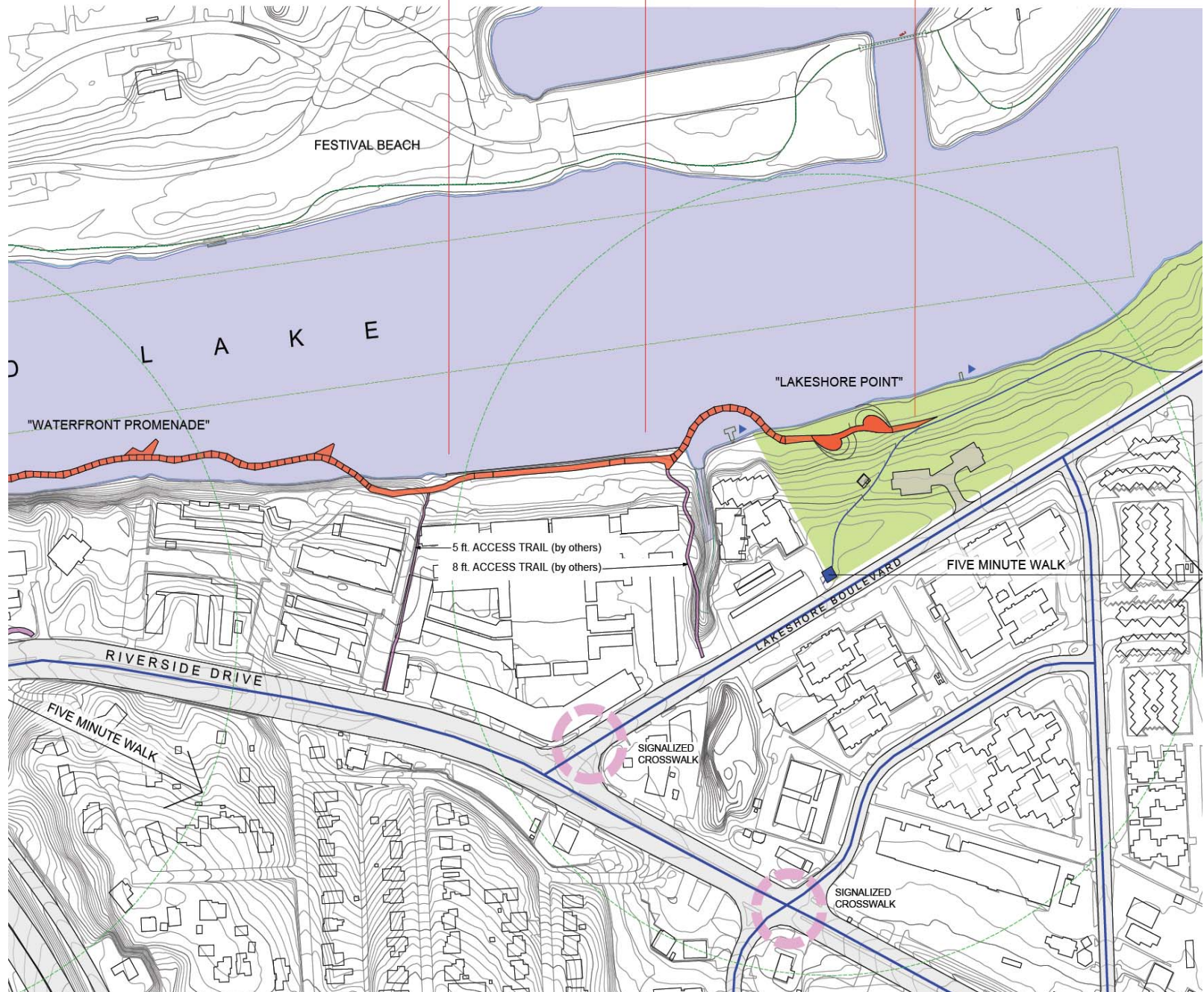
WATERFRONT PROMENADE
1,650 ft.



WATERFRONT PROMENADE
1,650 ft.

AMLI SEGMENT
530 ft.

LAKESHORE POINT
710 ft.



REQUESTED ACTIONS

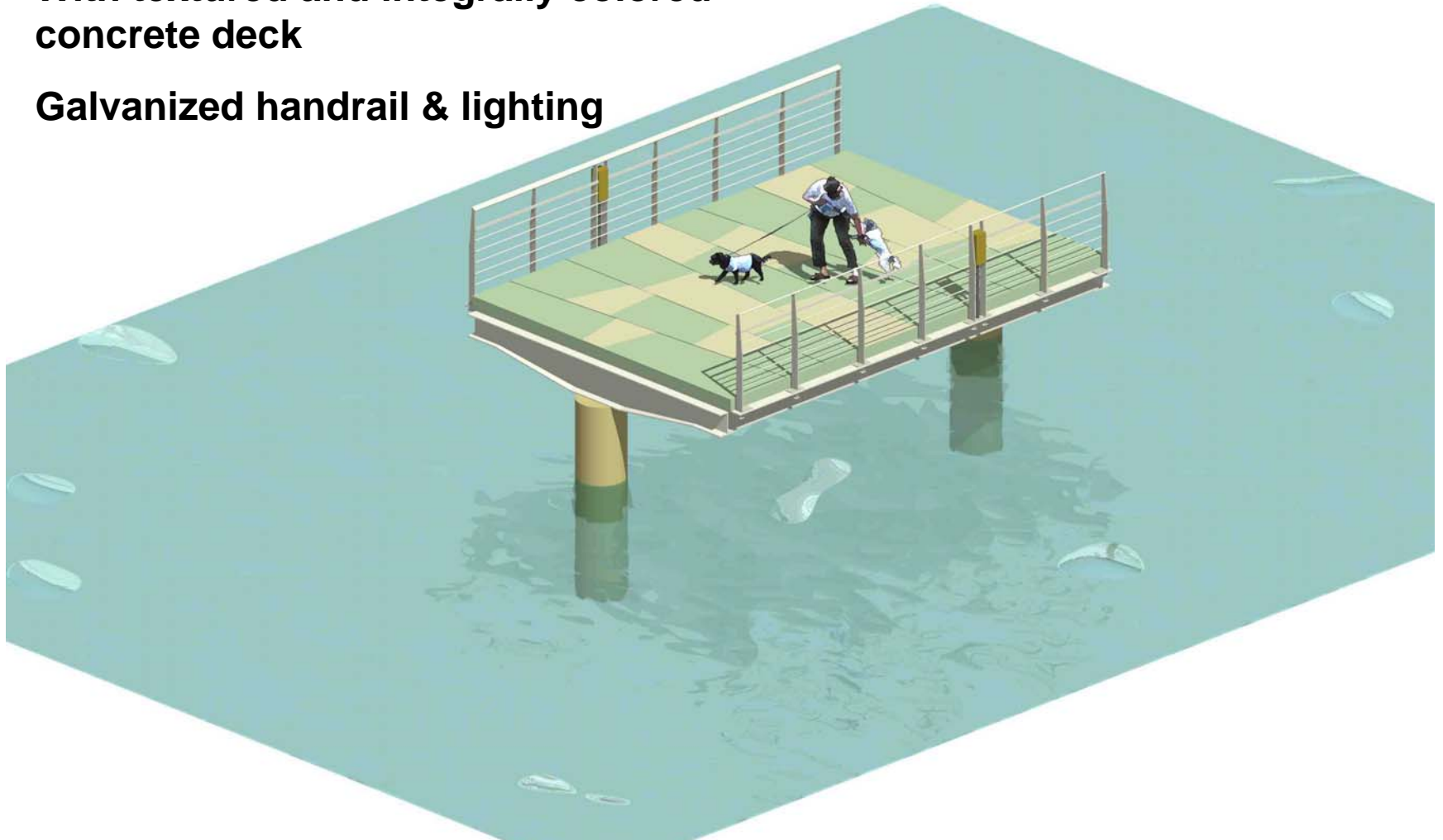
- **Recommendation to Board for:**
 - **Approval of fill in Lady Bird Lake (25-8-652)**
 - Boardwalk & shoreline improvements
 - 4,444 CY fill in flood plain
 - .08% of total flood volume
 - **Review and comment of shoreline modification (25-8-651)**
 - Eight locations per map
 - Primarily abutments, block walls & drainage

KIT OF PARTS

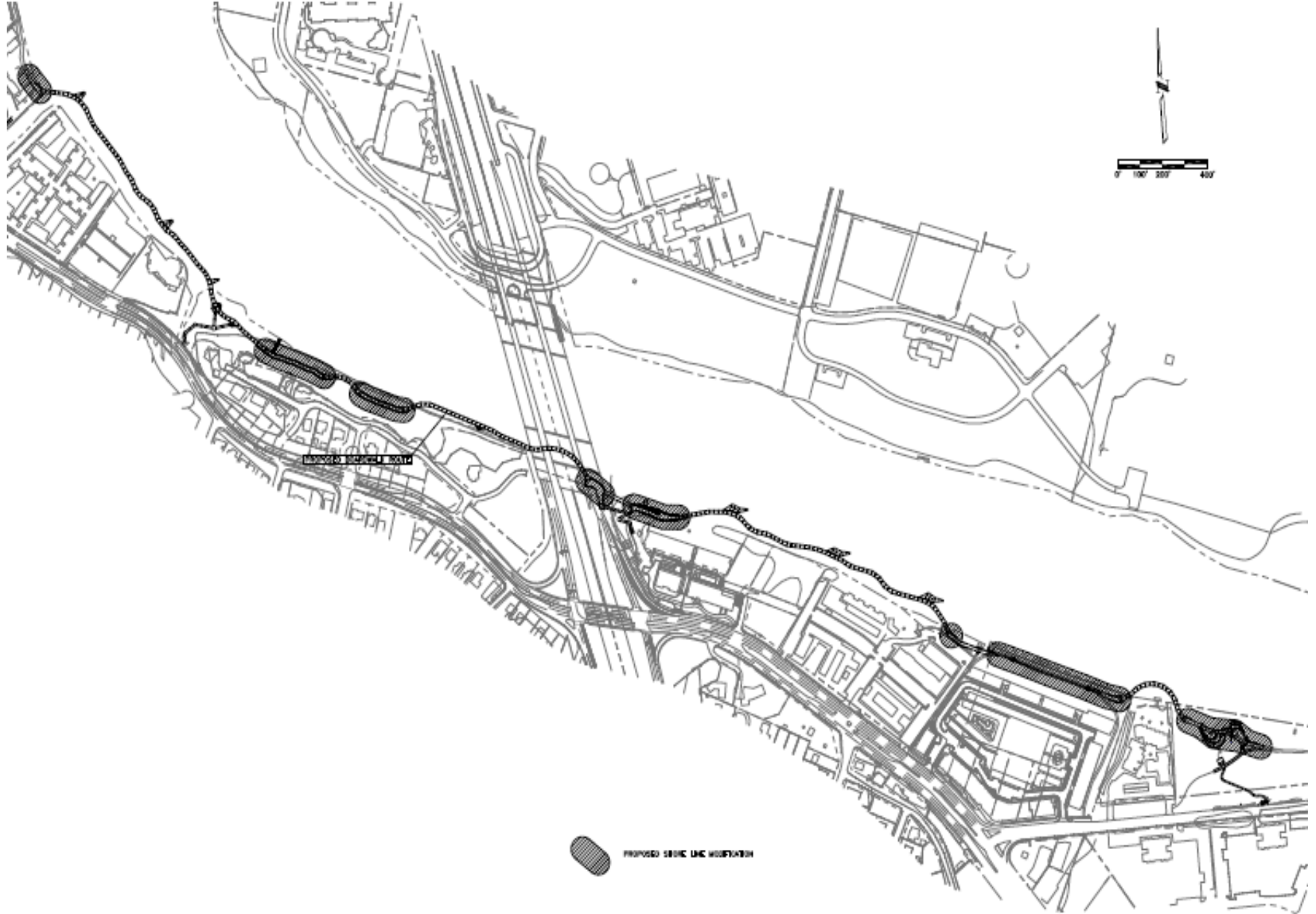
**Typical 20' long x 14' wide deck section on
24" dia. concrete piers & steel structure**

**With textured and integrally colored
concrete deck**

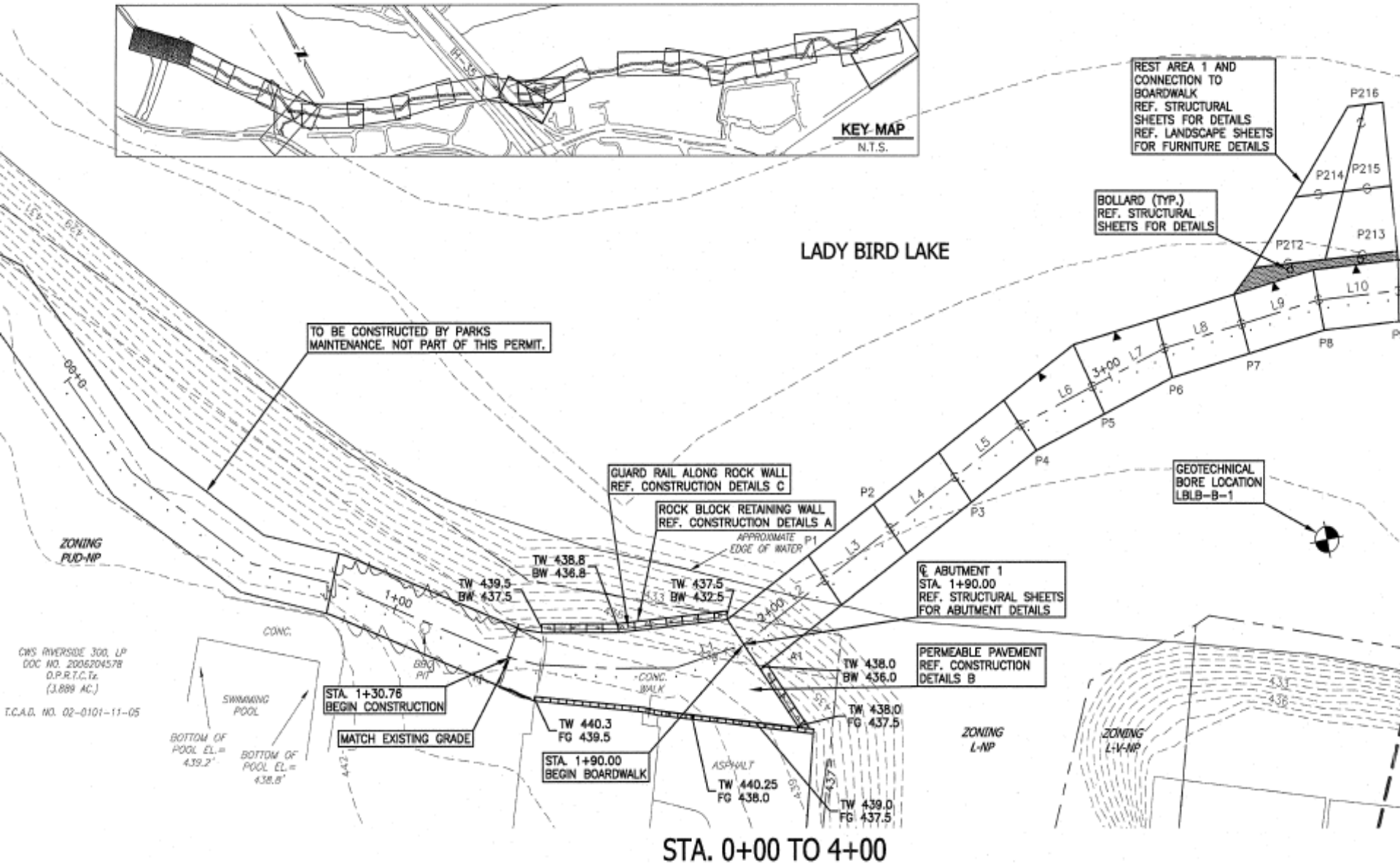
Galvanized handrail & lighting



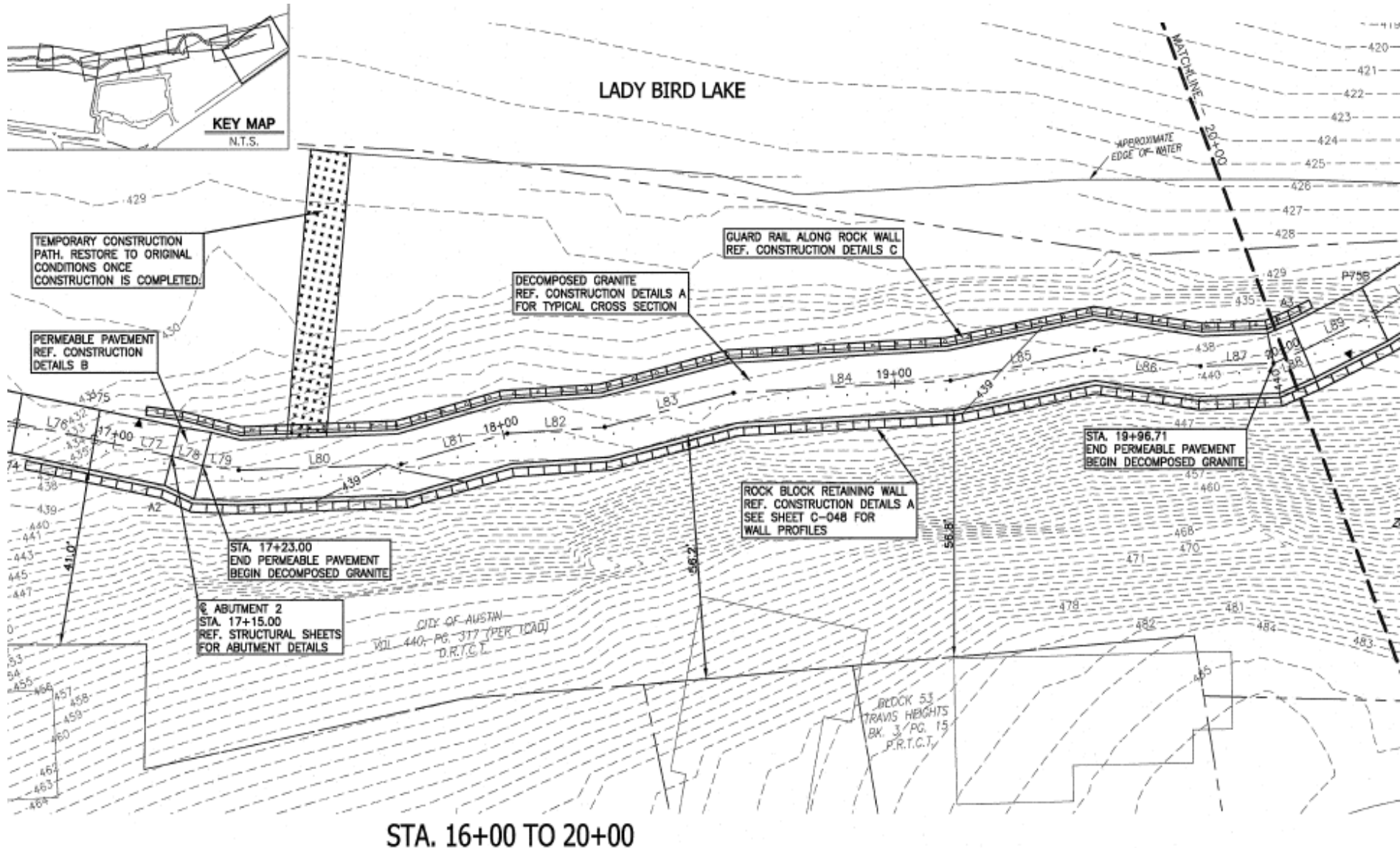
SHORELINE MODIFICATION



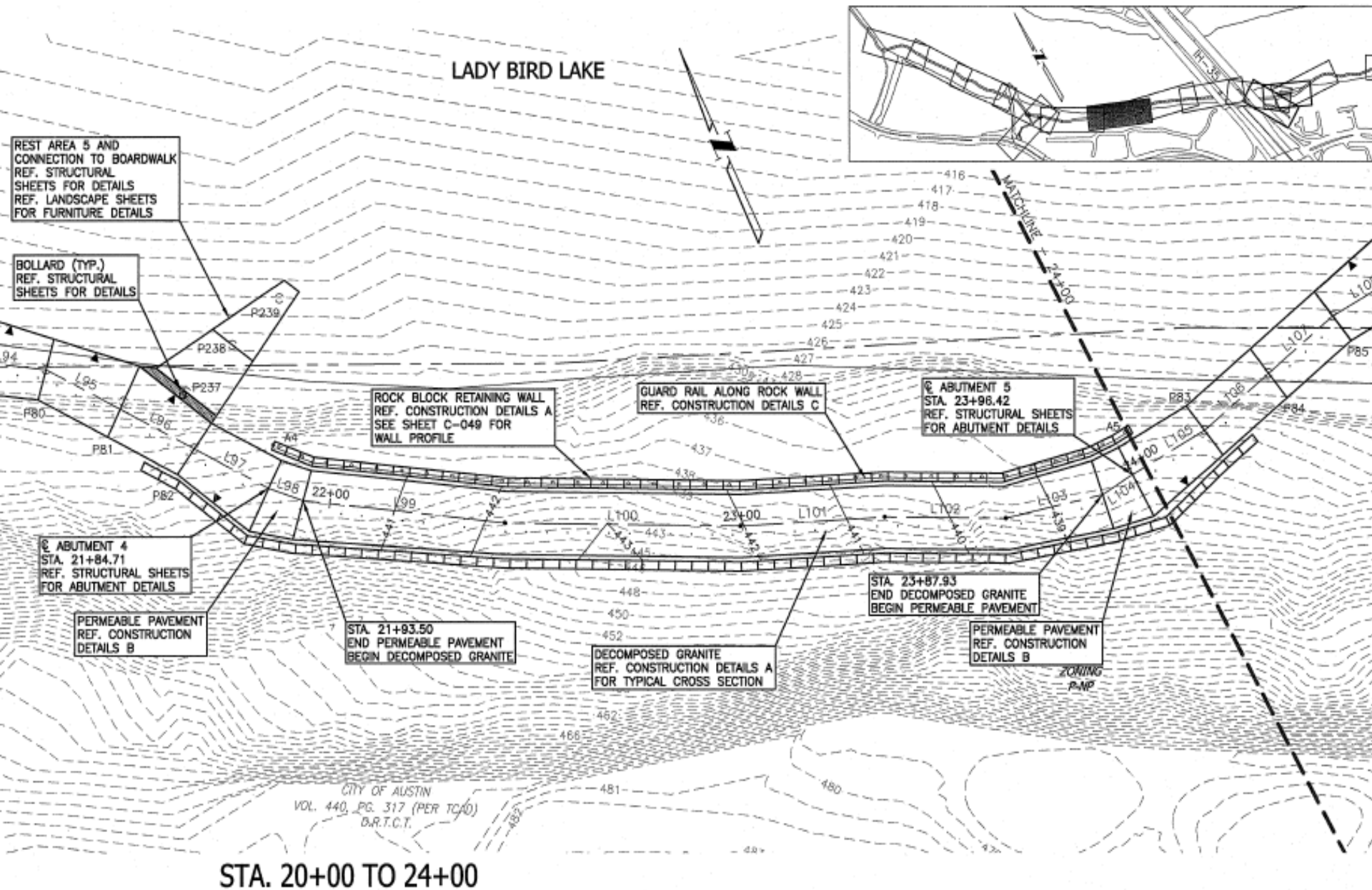
WEST (CWS) LANDING



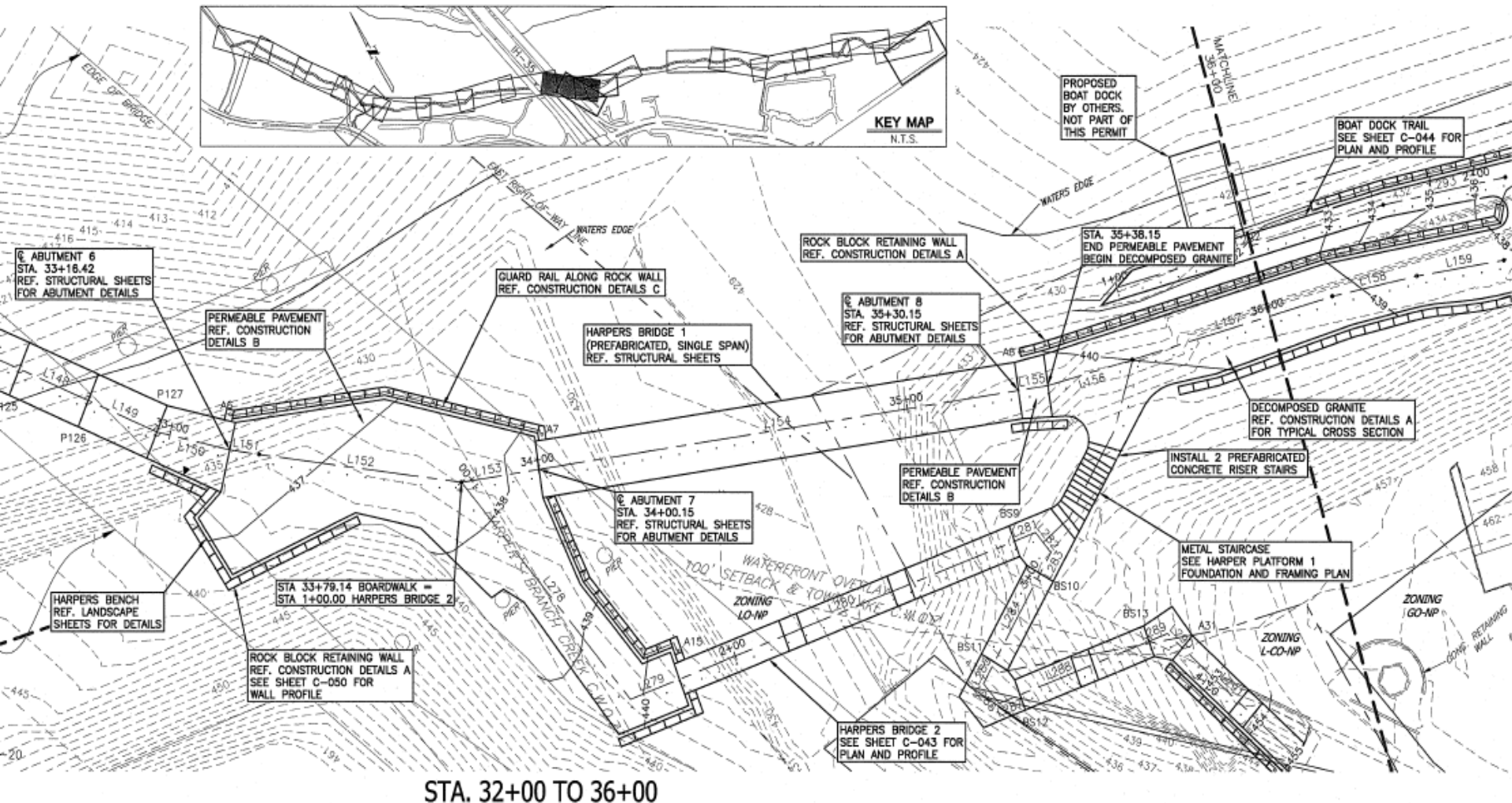
WOODLAND TRAIL A



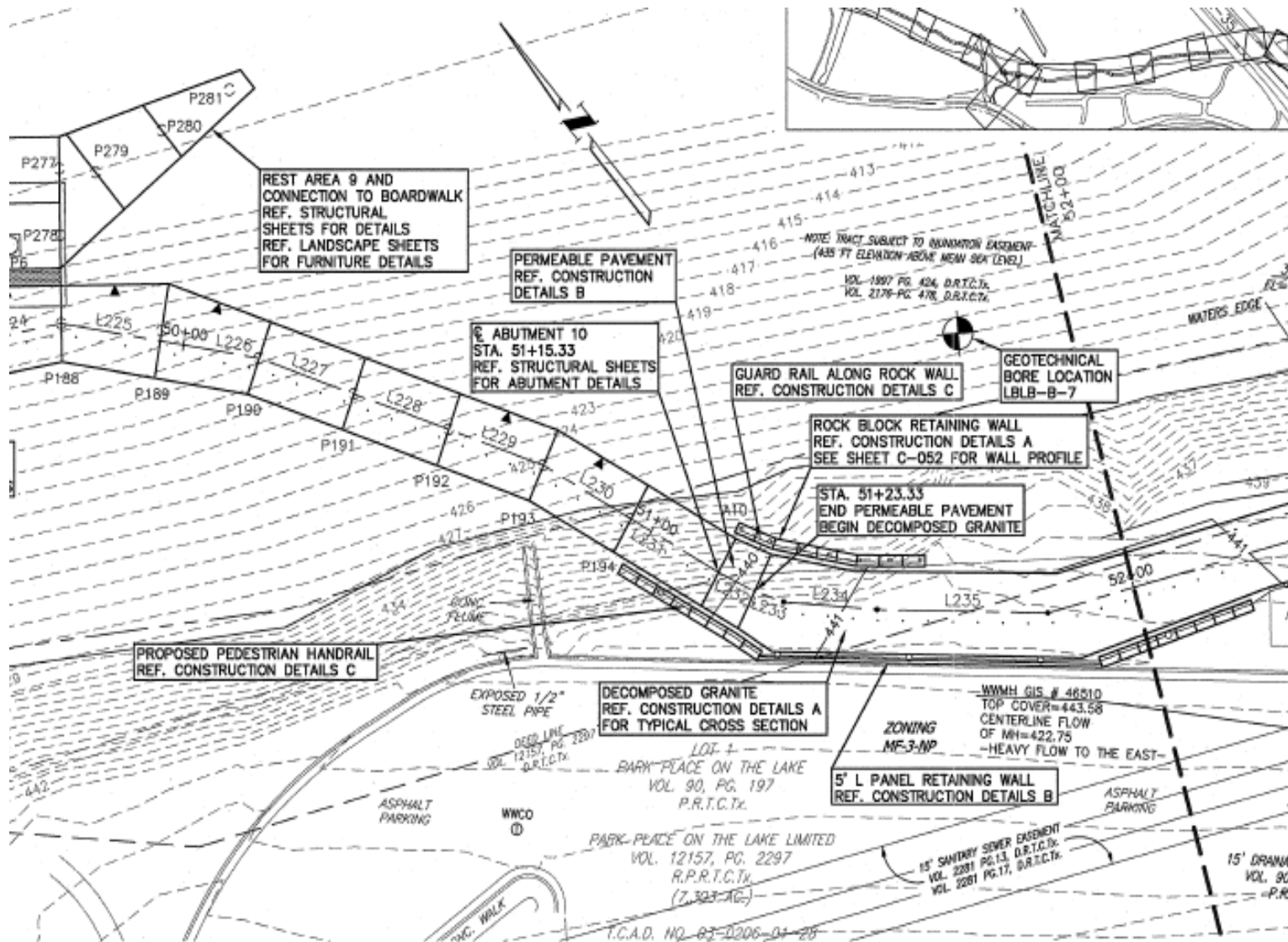
WOODLAND TRAIL B



HARPER'S BRANCH OUTLET

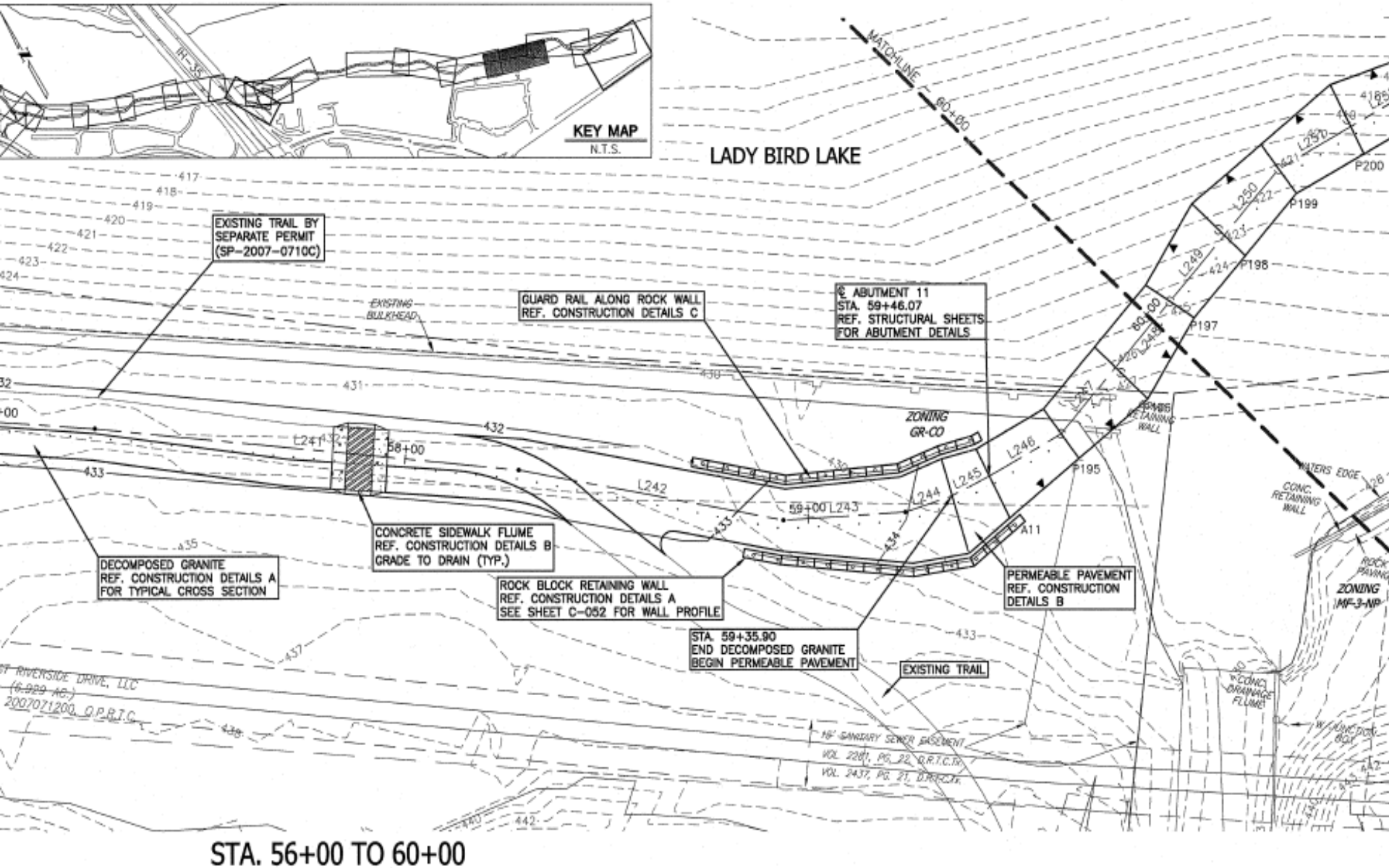


BREAKERS CONNECTOR



STA. 48+00 TO 52+00

AMLI DRAINS & ABUTMENT



LAKE SHORE PLAZA

