

Bartholomew Municipal Pool

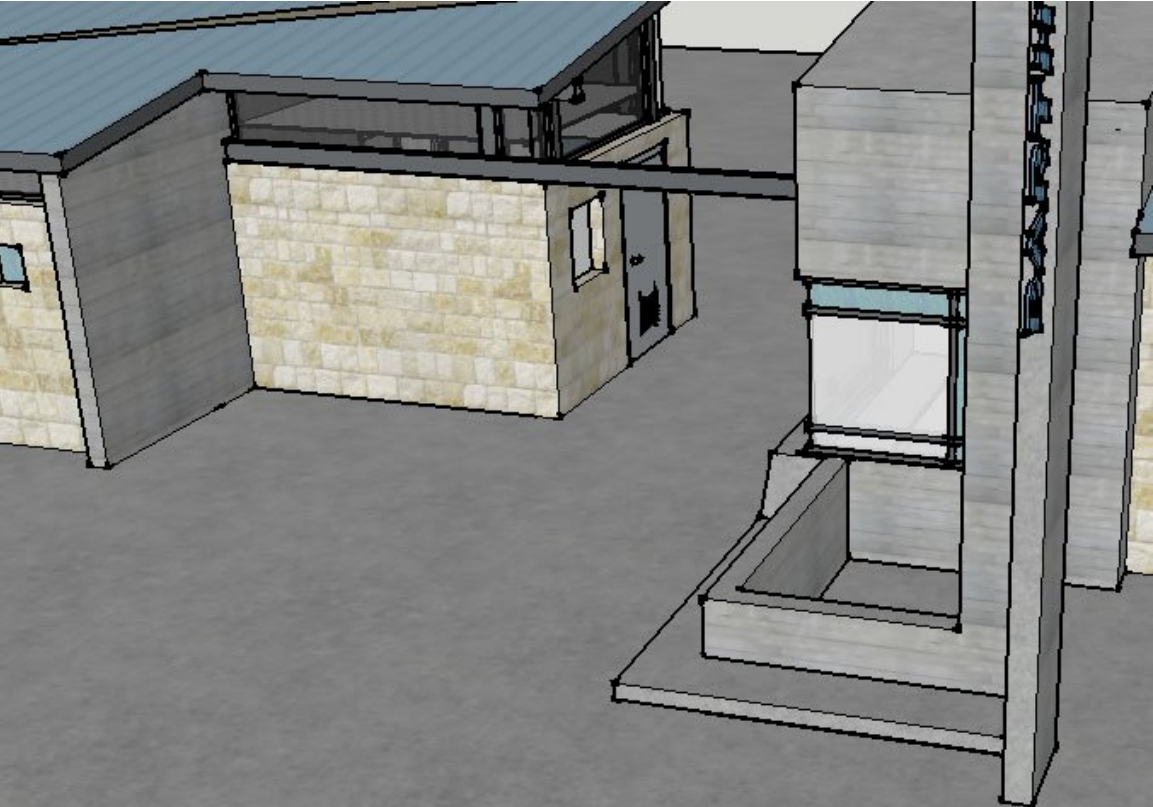
Casey D. Cooper

Artist's Statement

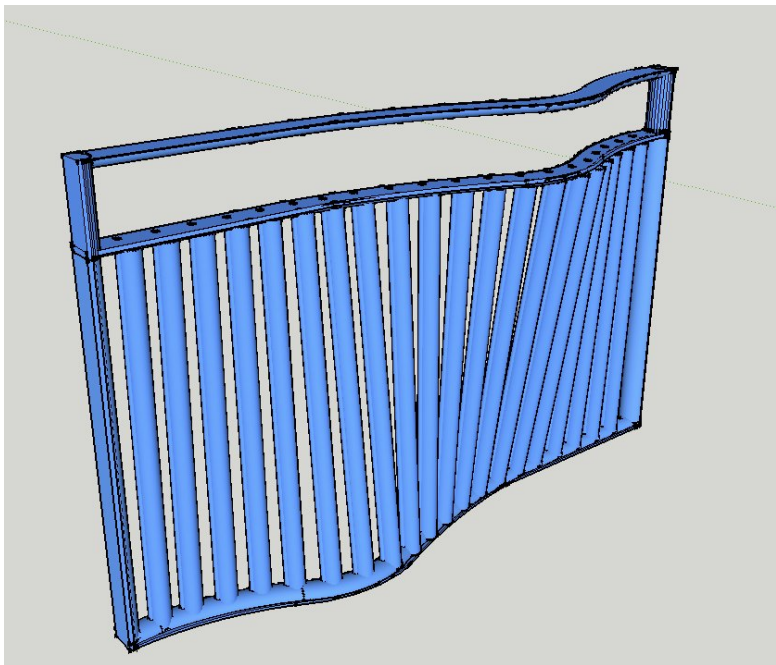
I have always enjoyed the thought of having the viewer question what it is they are observing. The idea of inflating steel is unique and creates a must touch, must feel experience. When I first learned of the opportunity to create a functional art piece I was delighted. Inflated objects and water simply go well together and I believe this is a chance to have pool visitors interact and appreciate art. I will say that this has been a rewarding challenge and I anticipate the challenges will continue to come. Along with the swimming pool / inflated object connection I wanted to create a piece that had a sense of movement. The soft wave like design hints at what is just on the other side of the gate – water, fun and relaxation.

My overall goal for this piece is to have viewers think, react and enjoy the sculpture and their swimming experience.

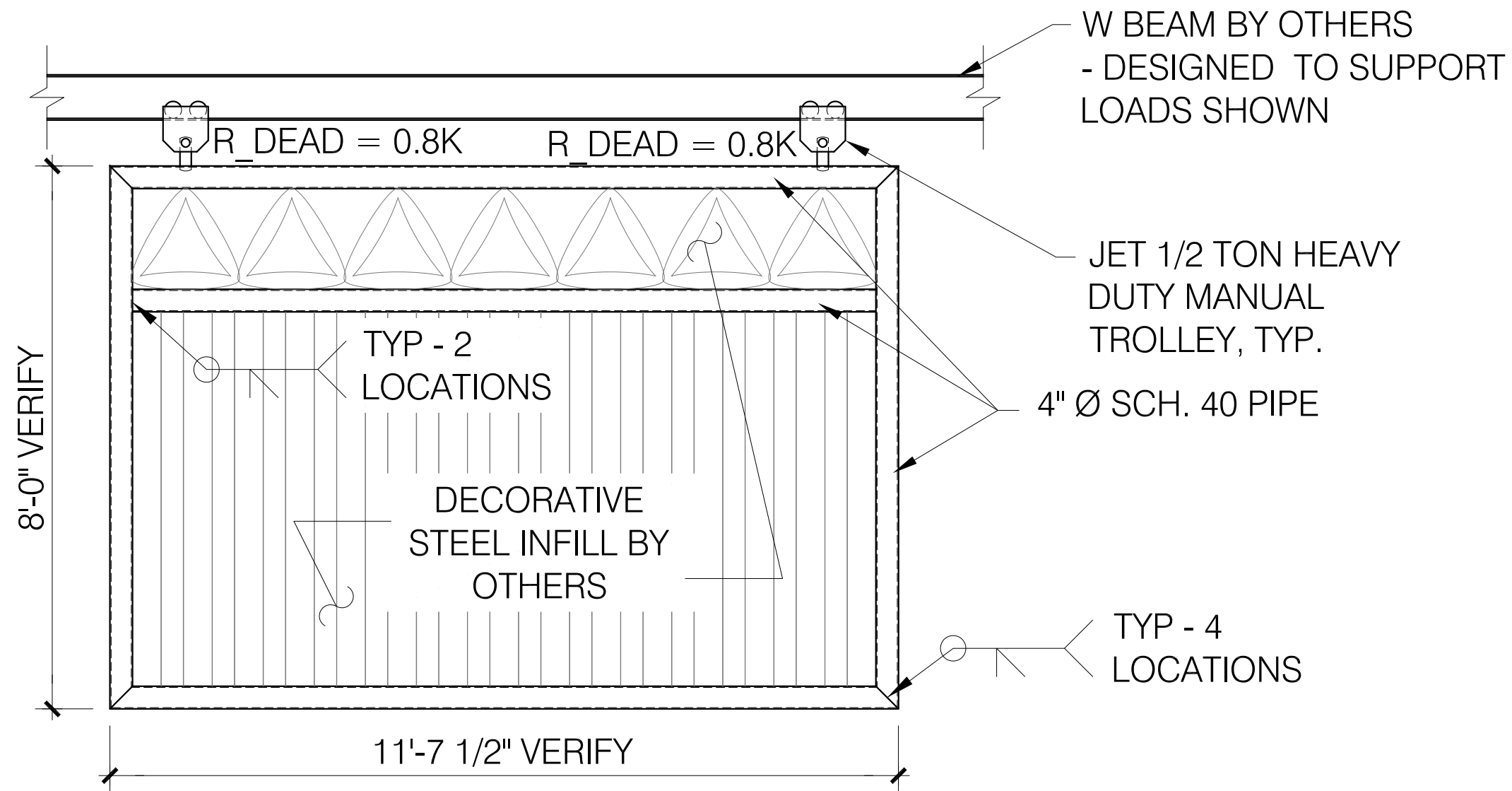






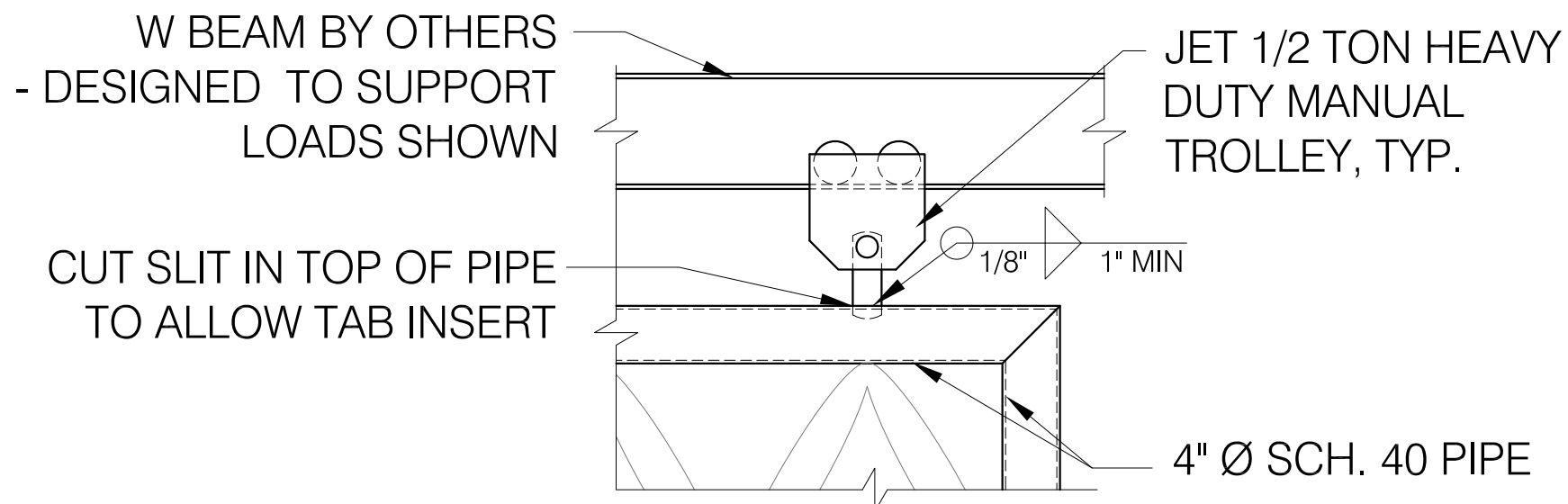


Dimensions: 8' H x 11' 7 1/2" W x 2' D
3 1/2" between each inflated piece



1 steel gate elevation

scale: 1/2" = 1'-0"



2 trolley to beam connection detail

scale: 1" = 1'-0"

GENERAL NOTES:

FOR GENERAL AND
STRUCTURAL NOTES,
SEE SHEET S001.

reach architects

2333 amur dr.
austin, tx 78745
512.970.5669

NOT PUBLISHED. ALL RIGHTS RESERVED BY REACH ARCHITECTS. DRAWINGS AND SPECIFICATIONS ARE INSTRUMENTS OF SERVICE AND SHALL REMAIN THE PROPERTY OF REACH ARCHITECTS. ISSUED TO DESCRIBE DESIGN INTENT. THEY ARE NOT TO BE USED ON OTHER PROJECTS OR EXTENSIONS TO THIS PROJECT EXCEPT BY AGREEMENT IN WRITING AND WITH APPROPRIATE COMPENSATION TO REACH ARCHITECTS. CONTRACTOR, SUB-CONTRACTOR & SUPPLIERS ARE RESPONSIBLE FOR CONFIRMING AND CORRELATING DIMENSIONS AND CONDITIONS AT THE JOB SITE, AND SHALL BE RESPONSIBLE FOR ALL LABOR AND MATERIALS REQUIRED IN ACCORDANCE WITH THE DESIGN INTENT. REACH ARCHITECTS WILL NOT BE RESPONSIBLE FOR CONSTRUCTION MEANS, METHODS, TECHNIQUES, SEQUENCES OR PROCEDURES, OR FOR SAFETY PRECAUTIONS AND PROGRAMS IN CONNECTION WITH THIS PROJECT. ALL WORK SHALL BE PERFORMED IN ACCORDANCE WITH ALL APPLICABLE CODES AND ORDINANCES.



Bartholomew Pool Entry
Gate
Austin, TX

PROJECT NUMBER: 1003
texas firm registration number: F-14195

CONTENTS:
elevation and details

S 101

GENERAL NOTES:

- A. FIELD VERIFY ALL DIMENSIONS PRIOR TO START OF WORK.
- B. DESIGN CODES AND SPECIFICATIONS:
THE INTERNATIONAL BUILDING CODE 2006 (IBC 2006)
MANUAL OF STEEL CONSTRUCTION, LRFD 13TH EDITION (AISC)
- C. DESIGN LOADS:
DEAD LOAD = FINISHES AS REQUIRED
WIND LOAD:
BASIC WIND SPEED = 90MPH (3 SECOND GUST)
IMPORTANCE FACTOR: I = 1
OCCUPANCY CATEGORY = II
EXPOSURE = C
INTERNAL PRESSURE COEFFICIENT = 0.0
- D. DEVIATION FROM THE STRUCTURAL DRAWINGS SHALL NOT BE MADE WITHOUT APPROVAL FROM THE STRUCTURAL ENGINEER.
- E. DO NOT SCALE DIMENSIONS FROM STRUCTURAL DRAWINGS.
- F. THE EXTENT OF ENGINEERED SCOPE IN THESE DRAWINGS IS LIMITED TO THE STRUCTURAL STEEL FRAME AND ITS CONNECTION TO THE SPECIFIED TROLLIES ONLY. THE DECORATIVE STEEL INFILL HAVE NOT BEEN ANALYZED FOR ANY STRUCTURAL PROPERTIES DUE TO THE EXPERIMENTAL NATURE OF THEIR FABRICATION. THE SUPPORTING STEEL BEAM AND ITS ASSOCIATED CONNECTIONS ARE OUTSIDE THE SCOPE OF THESE DRAWINGS. REFER TO ENGINEER OF RECORD FOR THE BARTHOLOMEW POOL RENOVATION.
- G. REFER TO ARCHITECTURAL/ARTIST DRAWINGS FOR DECORATIVE STEEL INFILL.
- H. THE CONTRACTOR IS RESPONSIBLE FOR COORDINATING DETAILS AND ACCURACY OF THE WORK; FOR CONFIRMING AND CORRELATING ALL QUANTITIES AND DIMENSIONS; FOR SELECTING FABRICATION PROCESSES; FOR TECHNIQUES OF ASSEMBLY; AND FOR PERFORMING WORK IN A SAFE AND SECURE MANNER.

- I. THE CONTRACTOR IS RESPONSIBLE FOR THE MEANS AND METHODS OF CONSTRUCTION AND ALL JOB RELATED SAFETY STANDARDS SUCH AS OSHA AND DOSH (DEPARTMENT OF OCCUPATIONAL SAFETY AND HEALTH)
- J. THE CONTRACTOR IS RESPONSIBLE FOR THE STRENGTH AND STABILITY OF THE STRUCTURE DURING CONSTRUCTION AND SHALL PROVIDE TEMPORARY SHORING, BRACING AND OTHER ELEMENTS REQUIRED TO MAINTAIN STABILITY UNTIL THE STRUCTURE IS COMPLETE. IT IS THE CONTRACTOR'S RESPONSIBILITY TO BE FAMILIAR WITH THE WORK REQUIRED IN THE CONSTRUCTION DOCUMENTS AND THE REQUIREMENTS FOR EXECUTING IT PROPERLY.
- K. LOADS ON THE STRUCTURE DURING CONSTRUCTION SHALL NOT EXCEED THE DESIGN LOADS AS NOTED ABOVE.
- L. THE CONTRACTOR HAS THE RESPONSIBILITY TO NOTIFY THE ENGINEER OF ANYT ARCHITECTURAL, MECHANICL, ELECTRICAL, OR PLUMBING LOADS IMPOSED ONTO THE STRUCTURE THAT DIFFERS FROM, OR THAT IS NOT DOCUMENTED ON THE ORIGINAL CONTRACT DOCUMENTS. PROVIDE DOCUMENTATION OF LOCATION, LOAD, SIZE AND ANCHORAGE OF ALL UNDOCUMENTED LOADS IN EXCESS OF 200 POUNDS. PROVIDE MARKED UP STRUCTURAL PLAN INDICATING LOCATIONS OF ANY NEW EQUIPMEMNT OR LOADS. SUBMIT PLANS TO THE ARCHITECT/ENGINEER FOR REVIEW PRIOR TO INSTALLATION.
- M. ALTERNATE PRODUCTS OF SIMILAR STRENGTH, NATURE AND FORM FOR SPECIFIED ITEMS MAY BE SUBMITTED WITH ADEQUATE TECHNICAL DOCUMENTATION TO THE ARCHITECT/ENGINEER FOR REVIEW. ALTERNATE MATERIALS THAT ARE SUBMITTED WITHOUT ADEQUATE TECHNICAL DOCUMENTATION OR THAT SIGNIFICANTLY DEVIATE FROM THE DESIGN INTENT OF MATERIALS SPECIFIED MAY BE RETURNED WITHOUT REVIEW. ALTERNATES THAT REQUIRE SUBSTANTIAL EFFORT TO REVIEW WILL NOT BE REVIEWED UNLESS AUTHORIZED BY THE OWNER.

STRUCTURAL STEEL:

- A. STRUCTURAL STEEL WORK SHALL CONFORM TO ALL REQUIREMENTS OF THE MANUAL OF STEEL CONSTRUCTION, LRFD, 13TH EDITION.
- B. ALL PLATE STEEL SHALL BE ASTM A36 GRADE OR BETTER.
- C. ALL PIPE STEEL SHALL BE ASTM A36 GRADE OR BETTER.
- D. WELDING SHALL CONFORM TO AWS D1.1 AND VISUALLY CONFORM TO AWS SECTION 6 AND TABLE 6.1.
- E. WELDING SHALL BE PERFORMED WITH E70XX, 70KSI, ELECTRODES APPROPRIATE FOR THE PROCESS SELECTED.

reach architects

2333 amur dr.
austin, tx 78745
512.970.5669

NOT PUBLISHED. ALL RIGHTS RESERVED BY REACH ARCHITECTS. DRAWINGS AND SPECIFICATIONS ARE INSTRUMENTS OF SERVICE AND SHALL REMAIN THE PROPERTY OF REACH ARCHITECTS. ISSUED TO DESCRIBE DESIGN INTENT. THEY ARE NOT TO BE USED ON OTHER PROJECTS OR EXTENSIONS TO THIS PROJECT EXCEPT BY AGREEMENT IN WRITING AND WITH APPROPRIATE COMPENSATION TO REACH ARCHITECTS. CONTRACTOR, SUB-CONTRACTOR & SUPPLIERS ARE RESPONSIBLE FOR CONFIRMING AND CORRELATING DIMENSIONS AND CONDITIONS AT THE JOB SITE, AND SHALL BE RESPONSIBLE FOR ALL LABOR AND MATERIALS REQUIRED IN ACCORDANCE WITH THE DESIGN INTENT. REACH ARCHITECTS WILL NOT BE RESPONSIBLE FOR CONSTRUCTION MEANS, METHODS, TECHNIQUES, SEQUENCES OR PROCEDURES, OR FOR SAFETY PRECAUTIONS AND PROGRAMS IN CONNECTION WITH THIS PROJECT. ALL WORK SHALL BE PERFORMED IN ACCORDANCE WITH ALL APPLICABLE CODES AND ORDINANCES.



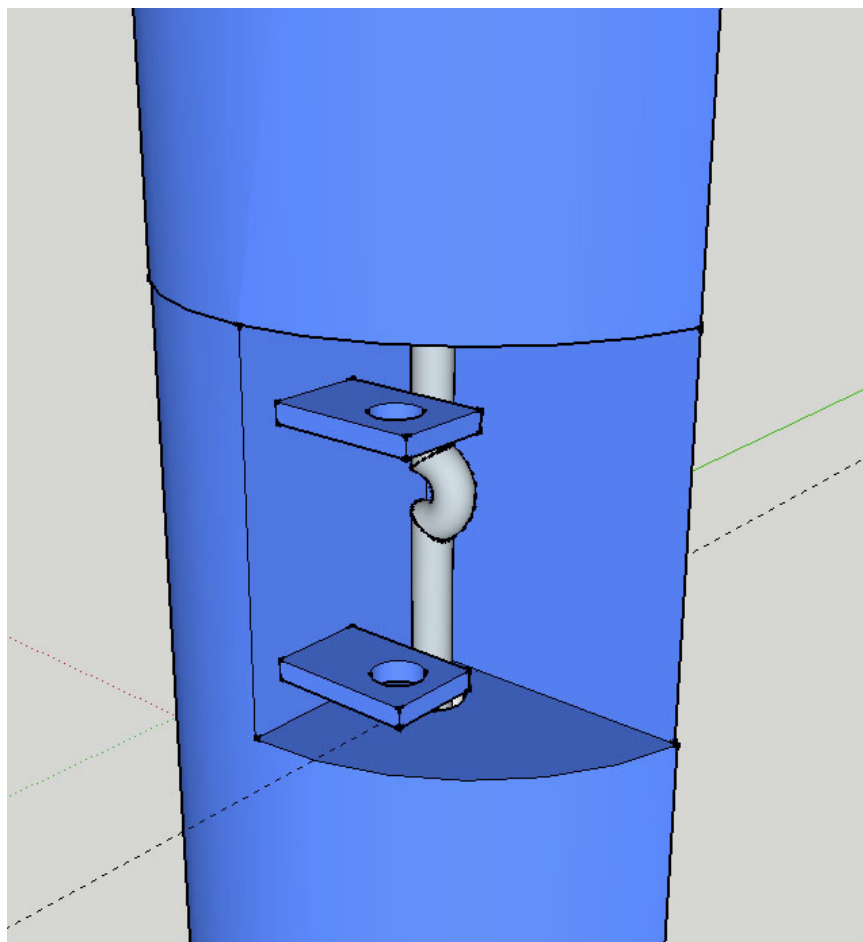
Bartholomew Pool Entry Gate
Austin, TX

PROJECT NUMBER: 1003
texas firm registration number: F-14195

CONTENTS: notes



1/2 ton trolley x 2



detail of locking on both ends of gate 40" from ground

Fabrication Schedule

May – June

- Fabricate edges of gate – cut, weld, clean
- Cut and weld inflated edges
- Cut and weld 20 strips to inflate

July

- Inflate all pieces
- Begin cleaning – grinding, sanding (inspect)
- 50% complete

August

- Weld inflated strips into place
- Weld trolley
- Assemble lock and key to both outer edges

September

- Spray interior
- Insert pipes (skeleton)
- Weld pipes
- Final cleaning

October – November

- Powder Coat
- Re-assembly
- 100% complete

December

- Installation
- Photo documentation

Maintenance

The gate will require minimal maintenance - An occasional cleaning, pressure wash or soap and water. The bearing in the trolleys will only require oil when needed – once a year at most.