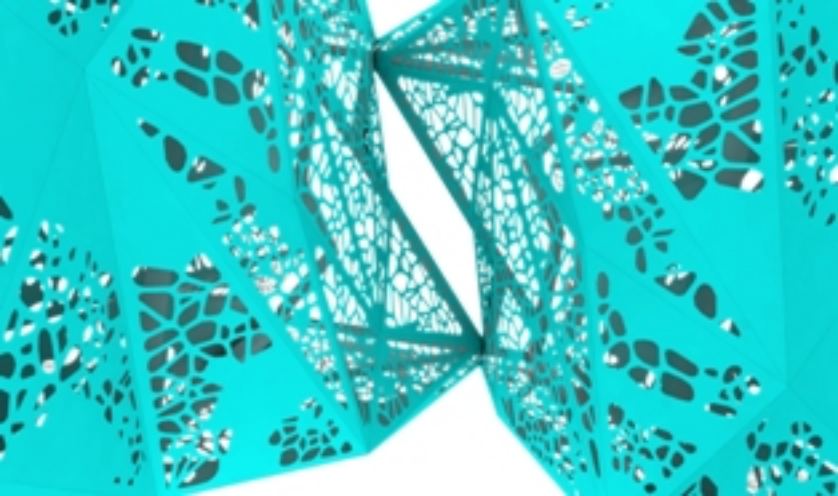
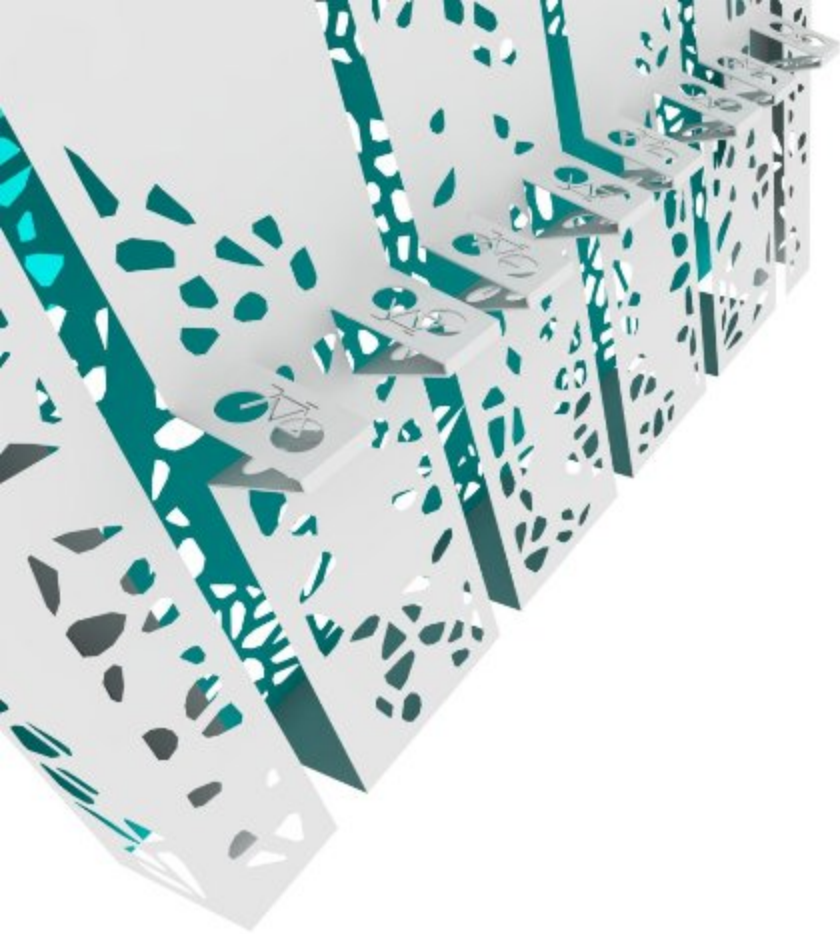


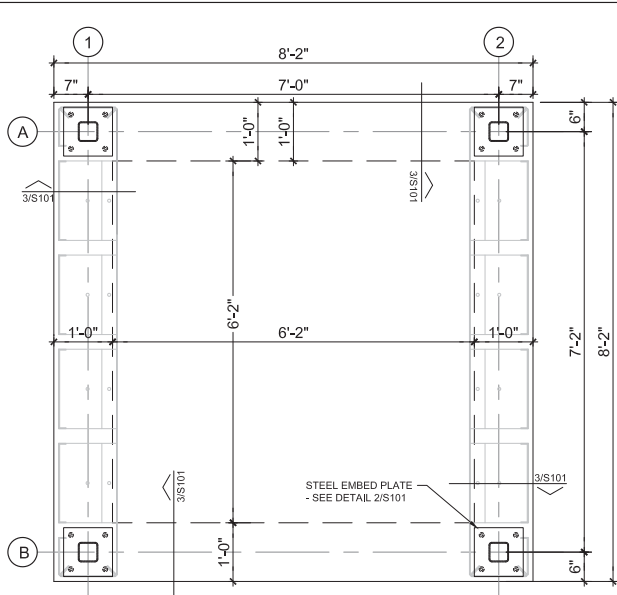
West Enfield Pool Art In Public Places Project

by Alan Knox

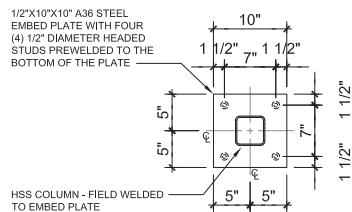




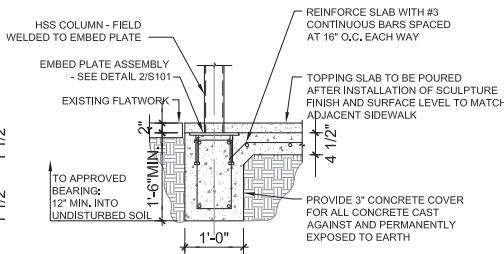




① foundation plan scale: 1" = 1'-0"



② embed plate detail scale: 1 1/2" = 1'-0"



③ foundation section detail scale: 1" = 1'-0"

NOTE: TOPPING SLAB TO BE POURED AFTER INSTALLATION OF SCULPTURE

GENERAL NOTES

- FIELD VERIFY ALL DIMENSIONS PRIOR TO START OF WORK.
- DESIGN CODES AND SPECIFICATIONS:
THE INTERNATIONAL BUILDING CODE 2006 (IBC 2006)
BUILDING CODE REQUIREMENTS FOR STRUCTURAL CONCRETE (ACI 318-05)
MANUAL OF STEEL CONSTRUCTION, LRFD 13TH EDITION (AISC)
- DESIGN LOADS:
DEAD LOAD = FINISHES AS REQUIRED
LIVE LOAD = 40PSF
WIND LOAD:
BASIC WIND SPEED = 90MPH (3 SECOND GUST)
IMPORTANCE FACTOR: I = 1
OCCUPANCY CATEGORY = II
EXPOSURE = C
INTERNAL PRESSURE COEFFICIENT = 0.0
- DEVIATION FROM THE STRUCTURAL DRAWINGS SHALL NOT BE MADE WITHOUT APPROVAL FROM THE STRUCTURAL ENGINEER.
- DO NOT SCALE DIMENSIONS FROM STRUCTURAL DRAWINGS.
- POST INSTALLED CONCRETE ANCHORS SHALL NOT BE USED WITHOUT ENGINEERS PRE-APPROVAL

STRUCTURAL FOUNDATION:

- DUE TO THE ABSENCE OF A SITE SPECIFIC GEOTECHNICAL REPORT, CONSERVATIVE DESIGN ASSUMPTIONS HAVE BEEN MADE REGARDING THE STABILITY AND BEARING CAPACITY OF UNDISTURBED NATURAL SOILS. IF SOIL CONDITIONS ARE FOUND TO DIFFER FROM THE ASSUMPTIONS STATED IN THE STRUCTURAL DOCUMENTS, CONTACT THE STRUCTURAL ENGINEER IMMEDIATELY.
- THE FOUNDATION SHALL BEAR ON UNDISTURBED, NATURAL, INORGANIC SOIL.
- REMOVE ALL TOP SOIL AND ORGANIC MATERIAL TO A MINIMUM DEPTH OF 6". BOTTOMS OF FOUNDATIONS SHALL BE FREE OF LOOSE MATERIAL.
- STRUCTURAL COMPACTED FILL SHALL BE PLACED IN MAXIMUM 8" LIFTS AND COMPACTED TO 95% MAXIMUM DRY DENSITY.

STRUCTURAL CONCRETE:

- ALL STRUCTURAL CONCRETE WORK SHALL CONFORM TO ALL REQUIREMENTS OF ACI 301-05, SPECIFICATION FOR STRUCTURAL CONCRETE.
- ALL CONCRETE SHALL BE NORMAL WEIGHT WITH A 28 DAY COMPRESSIVE STRENGTH (FC) OF 3000PSI.
- MINIMUM SPECIFIED YIELD STRENGTH OF REINFORCING BARS #4 AND LARGER, FY = 60KSI (GRADE 60). MINIMUM SPECIFIED YIELD STRENGTH OF #3 REINFORCING BARS, FY = 40KSI.
- REINFORCING BARS, WELDED WIRE FABRIC, AND STEEL EMBEDMENT PLATES SHALL BE FIRMLY TIED IN PLACE AND NOT FLOATED IN UNLESS NOTED OTHERWISE.
- CARE SHOULD BE TAKEN IN THE LOCATION OF REINFORCEMENT TO AVOID CONFLICT WITH ANCHOR BOLTS.
- REINFORCEMENT SHALL NOT BE WELDED OR TACKWELD WITHOUT APPROVAL OF THE STRUCTURAL ENGINEER.
- SLUMP SHALL BE NO GREATER THAN 4".
- WATER MAY NOT BE ADDED AT JOBSITE. WATER IN CONCRETE MIX SHALL BE POTABLE.
- MAXIMUM AGGREGATE SIZE SHALL BE 3/4".
- ALL REINFORCING SPLICES SHALL BE CLASS "B" AND ALL HOOKS SHALL BE STANDARD, UNO.
- PROVIDE FOUR (4) #5 STANDARD "L" BARS AT ALL BEAM INTERSECTIONS.
- REINFORCEMENT SHALL BE COLD BENT WHENEVER BENDING IS REQUIRED.
- FOR COLD-WEATHER AND HOT-WEATHER CONCRETE PLACEMENT, CONFORM TO APPLICABLE ACI CODES AND RECOMMENDATIONS. IN EITHER CASE, MATERIALS CONTAINING CHLORIDE, CALCIUM, SALTS, ETC. SHALL NOT BE USED.

STRUCTURAL STEEL:

- STRUCTURAL STEEL WORK SHALL CONFORM TO ALL REQUIREMENTS OF THE MANUAL OF STEEL CONSTRUCTION, LRFD, 13TH EDITION.
- ALL PLATE STEEL SHALL BE ASTM A36 GRADE.
- ALL CAST IN PLACE HEADED ANCHORS SHALL BE ASTM F1554 GRADE 36.
- STEEL FABRICATOR SHALL PROVIDE FULL PENETRATION WELDS OF ALL HEADED CONCRETE ANCHORS TO THE BOTTOMS OF EMBEDMENT PLATES.
- WELDING SHALL BE PERFORMED WITH E70XX ELECTRODES.

reach architects

2333 amur dr.
austin, tx 78745
512.970.5669

NOT PERMITTED. ALL RIGHTS RESERVED BY REACH ARCHITECTS, DRAWING AND SPECIFICATIONS ARE INSTRUMENTS OF SERVICE AND SHALL REMAIN THE PROPERTY OF REACH ARCHITECTS. DESIGNED TO DESCRIBE REQUIREMENTS, THEY ARE NOT TO BE USED ON OTHER PROJECTS OR OTHERWISE TO THIS PROJECT EXCEPT BY AGREEMENT IN WRITING AND ARE NOT A CONTRACT. NO CONTRACTOR OR SUPPLIER IS RESPONSIBLE FOR CORRECTING AND CORRELATING DIMENSIONS AND CONDITIONS AT THE JOBSITE, AND SHALL BE RESPONSIBLE FOR ALL LABOR AND MATERIALS REQUIRED IN ACCORDANCE WITH THE DESIGN. REACH ARCHITECTS SHALL NOT BE RESPONSIBLE FOR CONSTRUCTION METHODS, TECHNIQUES, SEQUENCES OR PROCEDURES, OR FOR SAFETY PRECAUTIONS AND PROGRAMS IN CONNECTION WITH THIS PROJECT. ALL WORK SHALL BE PERFORMED IN ACCORDANCE WITH ALL APPLICABLE CODES AND ORDINANCES.

THESE DOCUMENTS ARE FOR DESIGN REVIEW AND NOT INTENDED FOR CONSTRUCTION RECORDING OR PERMIT PURPOSES. THEY WERE PREPARED BY, OR UNDER THE SUPERVISION OF:

HANNAH KNOX, PE # 107467

FINAL DESIGN REVIEW 03/23/2012

WATER TOWER
BIKE RACK

Austin, TX

PROJECT NUMBER: 1001

CONTENTS:

structural foundation
plan and details

S 101

NOT FURNISHED, ALL RIGHTS RESERVED BY REACH ARCHITECTS, DRAWINGS AND SPECIFICATIONS ARE INSTRUMENTS OF SERVICE AND SHALL REMAIN THE PROPERTY OF REACH ARCHITECTS. ISSUED TO DESCRIBE DESIGN INTENT. THEY ARE NOT TO BE USED ON OTHER PROJECTS OR EXTENSIONS TO THIS PROJECT EXCEPT BY AGREEMENT WITH REACH AND WITH APPROPRIATE WRITTEN CONSENT OF REACH ARCHITECTS. ARCHITECT, SUB-CONTRACTOR & SUPPLIERS ARE RESPONSIBLE FOR CONFIRMING AND CORRELATING DIMENSIONS AND CONDITIONS AT THE JOB SITE, AND SHALL BE RESPONSIBLE FOR ALL LABOR AND MATERIALS REQUIRED IN ACCORDANCE WITH THE DESIGN INTENT. REACH ARCHITECTS WILL NOT BE RESPONSIBLE FOR CONSTRUCTION METHODS, CHOICES, MATERIALS, EQUIPMENT, PROCEDURES, OR SAFETY PRECAUTIONS AND PROGRAMS IN CONNECTION WITH THIS PROJECT. ALL WORK SHALL BE PERFORMED IN ACCORDANCE WITH ALL APPLICABLE CODES AND ORDINANCES.

THESE DOCUMENTS ARE FOR DESIGN
REVIEW AND NOT INTENDED FOR
CONSTRUCTION BIDDING OR PERMIT
PURPOSES. THEY WERE PREPARED BY, OR
UNDER THE SUPERVISION OF:

HANNAH KNOX, PE # 107463

FINAL DESIGN REVIEW 03/23/2012

ISSUED FOR REVIEW
NOT FOR CONSTRUCTION

WATER TOWER
BIKE RACK

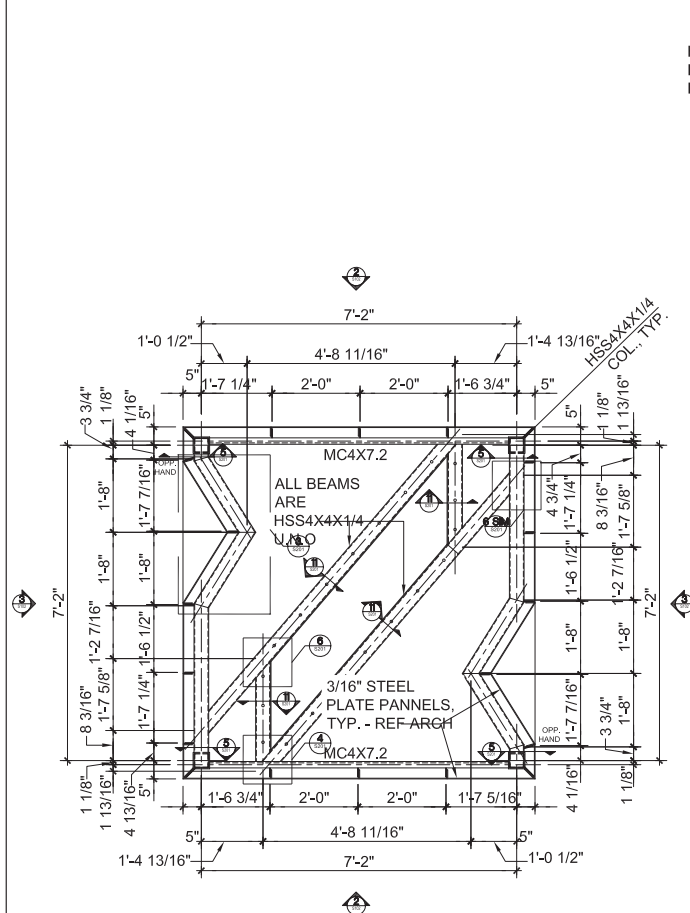
Austin, TX

PROJECT NUMBER: 1001

CONTENTS-

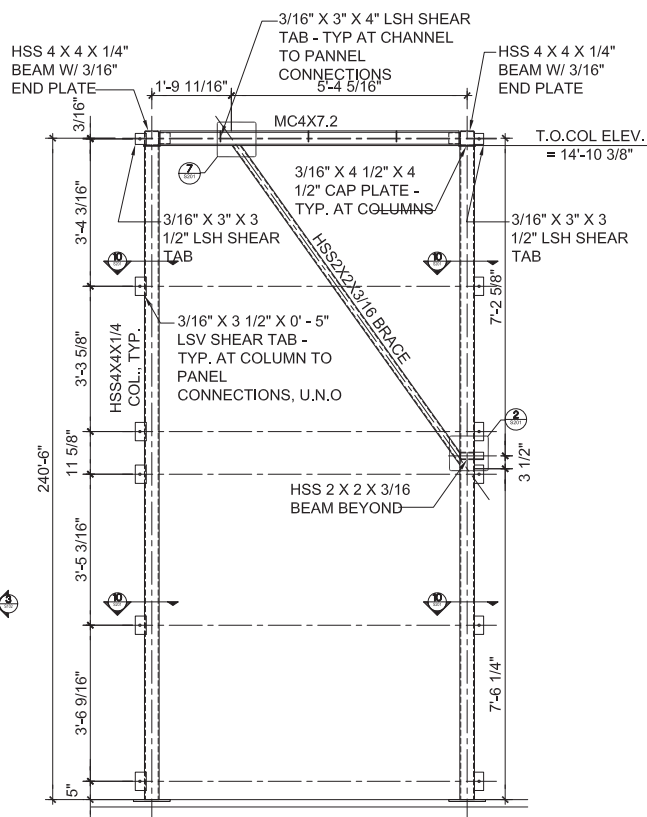
structural plan and
elevations

S 201



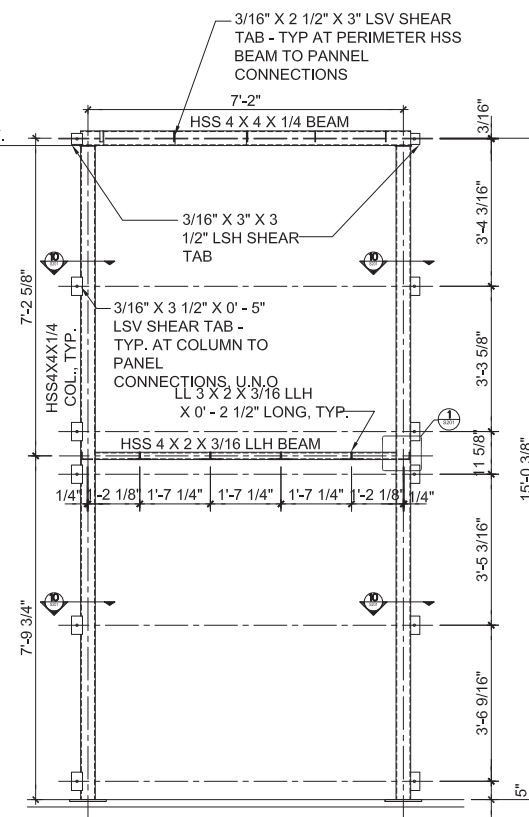
① top plan

scale: 3/4" = 1'-0"



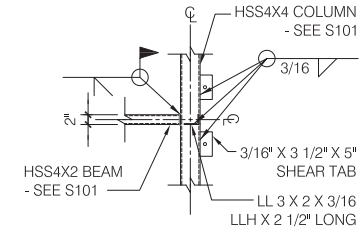
② elevation

scale: 3/4" = 1'-0"

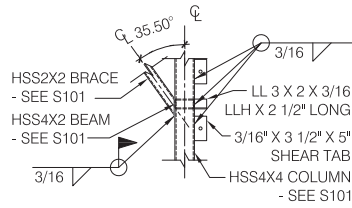


③ elevation

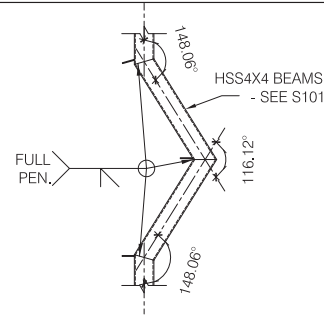
scale: 3/4" = 1'-0"



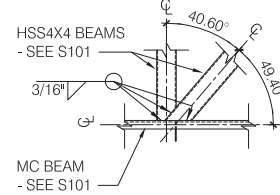
1 hss beam to hss column detail
scale: 1" = 1'-0"



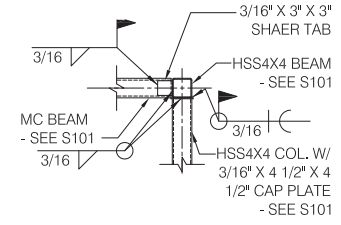
2 hss brace to hss column detail
scale: 1" = 1'-0"



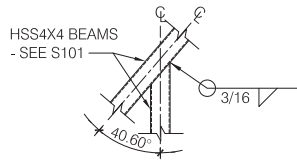
3 hss beam plan detail
scale: 1" = 1'-0"



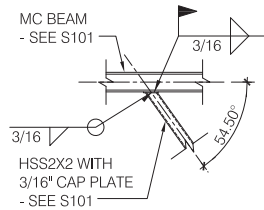
4 beam plan detail
scale: 1" = 1'-0"



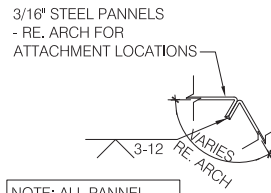
5 beam connection detail
scale: 1" = 1'-0"



6 beam connection plan detail
scale: 1" = 1'-0"

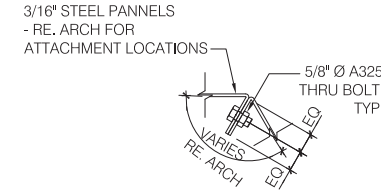


7 brace to beam detail
scale: 1" = 1'-0"

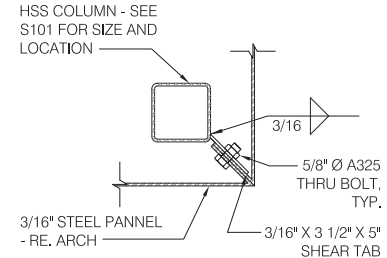


NOTE: ALL PANNEL WELDING TO OCCUR PRIOR TO POWDER COATING OR PAINTING

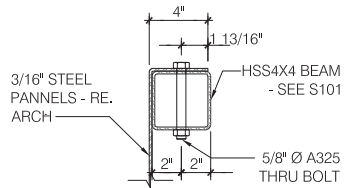
8 welded panel connection detail
scale: 3" = 1'-0"



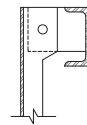
9 bolted panel connection detail
scale: 3" = 1'-0"



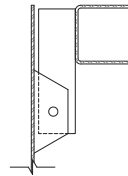
10 typical column to panel connection
scale: 3" = 1'-0"



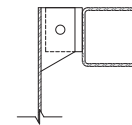
11 panel to hss beam connection
scale: 3" = 1'-0"



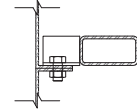
12 panel to mc beam connection
scale: 3" = 1'-0"



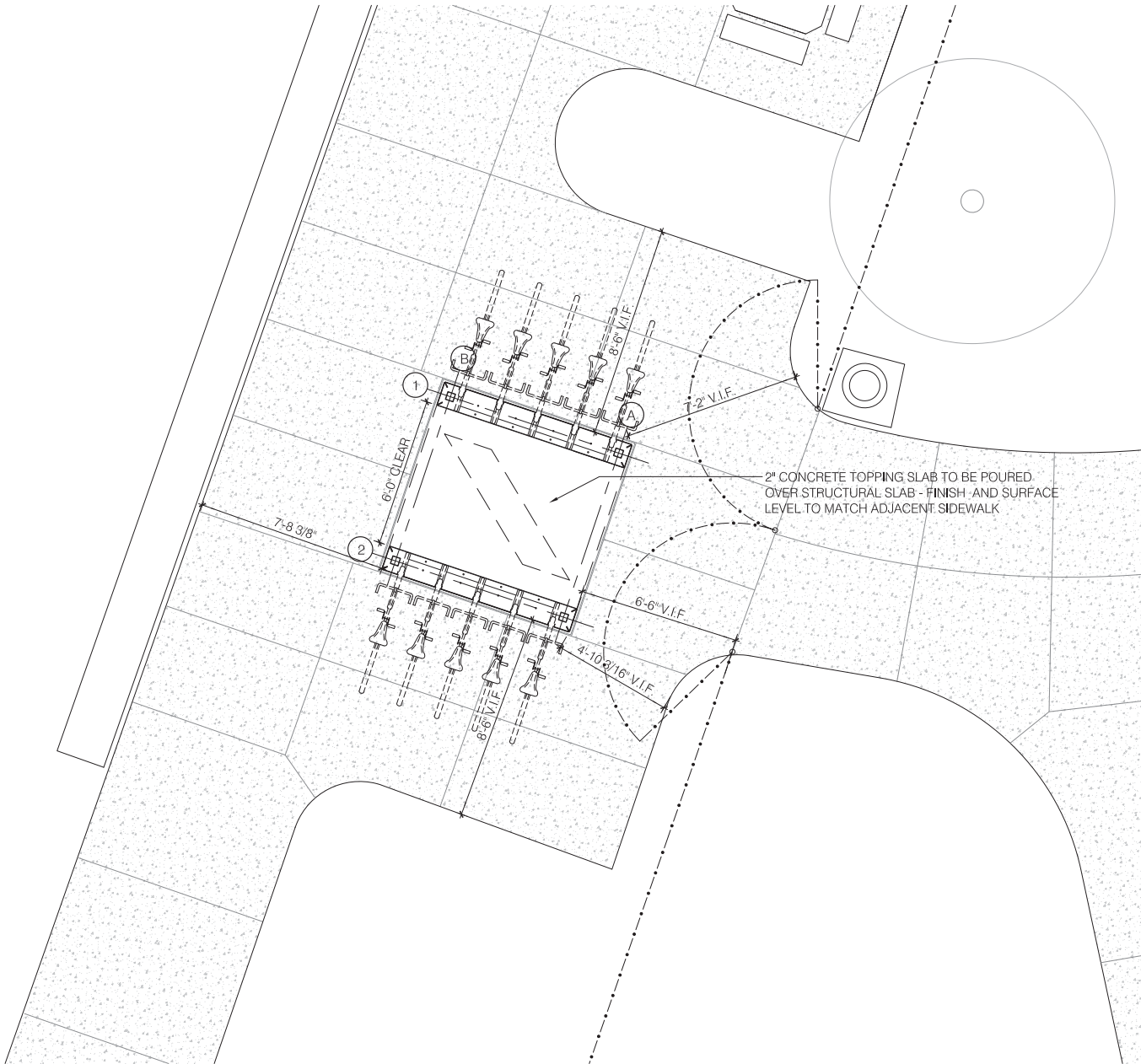
13 panel to hss beam connection
scale: 3" = 1'-0"



14 panel to hss beam connection
scale: 3" = 1'-0"



15 panel to hss beam connection
scale: 3" = 1'-0"



GENERAL NOTES

- FIELD VERIFY ALL DIMENSIONS PRIOR TO START OF WORK.
- ALL PANEL DRAWINGS ARE FOR INTENDED FOR TWO IDENTICAL PANEL ASSEMBLIES. THERE ARE TWO GROUP A's, TWO GROUP B's, TWO GROUP C's, etc. THE SCULPTURE IS MADE UP OF TWO MATCHING PANEL ASSEMBLIES (A) THROUGH (K).
- ALL PANELS WITHIN A GIVEN GROUP ARE TO BE WELDED TOGETHER (REFER TO STRUCTURAL FOR DETAILS) PRIOR TO GALVANIZING AND/OR POWDER COATING. AFTER GALVANIZING AND/OR POWDER COATING PANEL GROUPS ARE TO BE MECHANICALLY FASTENED (REFER TO STRUCTURAL FOR DETAILS).
- ALL SITEWORK, SIDEWALKS, FENCES, FURNITURE, AND OTHER ELEMENTS BY OTHERS.

reach architects

2333 amur dr.
austin, tx 78745
512.970.5669

NOT PERMITTED. ALL RIGHTS RESERVED BY REACH ARCHITECTS. DRAWINGS AND SPECIFICATIONS ARE INSTRUMENTS OF SERVICE AND SHALL REMAIN THE PROPERTY OF REACH ARCHITECTS. REUSE OF ANY PART OF THESE DRAWINGS FOR ANY OTHER PROJECTS OR EXTENDING TO THIS PROJECT EXCEPT BY AGREEMENT IN WRITING AND REACH ARCHITECTS' COMPENSATION TO REACH ARCHITECTS, CONTRACTOR, SUBCONTRACTOR & SUPPLIERS ARE RESPONSIBLE FOR CORRECTING AND CORRELATING DIMENSIONS AND CONDITIONS AT THE JOB SITE. REACH SHALL BE RESPONSIBLE FOR ALL LABOR AND MATERIALS REQUIRED IN ACCORDANCE WITH THE DESIGN INTENT. REACH ARCHITECTS WILL NOT BE RESPONSIBLE FOR CONSTRUCTION METHODS, TECHNIQUES, STANDARDS OR PROCEDURES, OR FOR SAFETY PRECAUTIONS AND PROGRAMS IN CONNECTION WITH THE PROJECT. ALL WORK SHALL BE PERFORMED IN ACCORDANCE WITH ALL APPLICABLE CODES AND ORDINANCES.

THESE DOCUMENTS ARE FOR DESIGN REVIEW AND NOT INTENDED FOR CONSTRUCTION RECORDING OR PERMIT PURPOSES. THEY WERE PREPARED BY, OR UNDER THE SUPERVISION OF:

ALAN KNOX, AIA # 21945

FINAL DESIGN REVIEW 03/23/2012

ISSUED FOR REVIEW
NOT FOR CONSTRUCTION

WATER TOWER
BIKE RACK

Austin, TX

PROJECT NUMBER: 1001

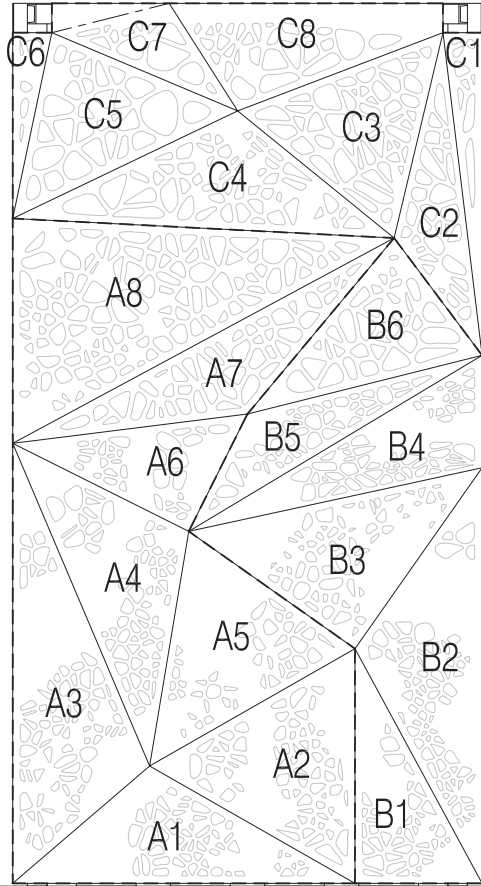
CONTENTS:

site plan

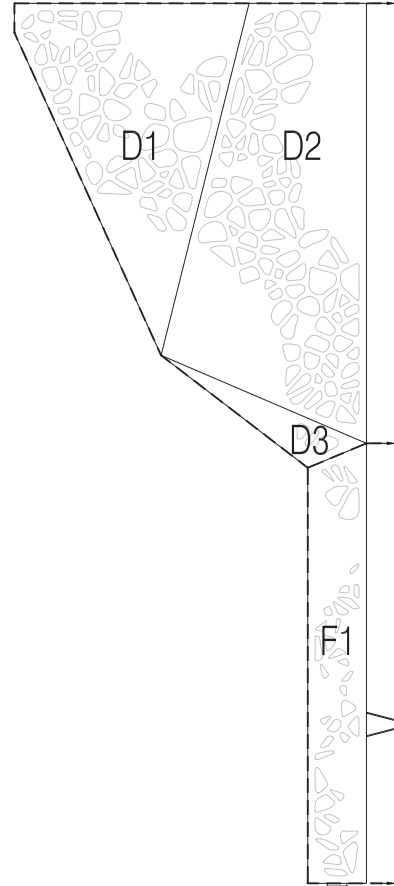
AS 101

1 site plan

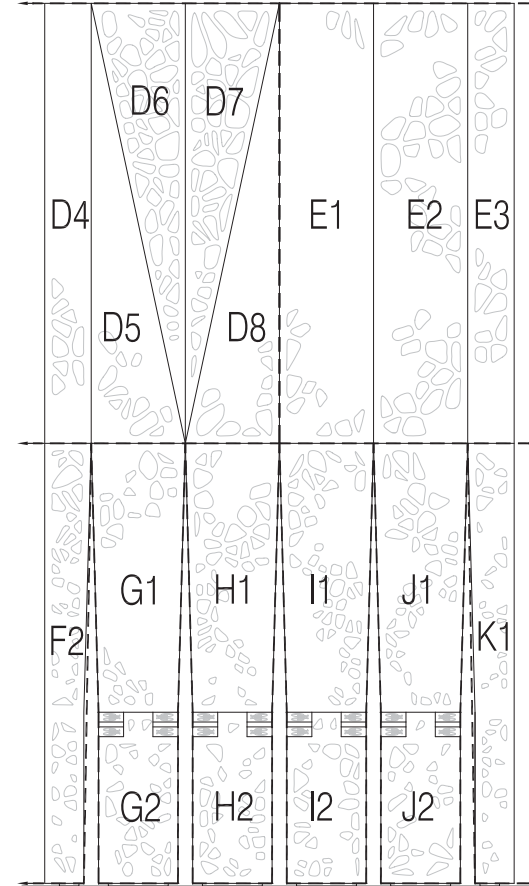
scale: 1/2" = 1'-0"



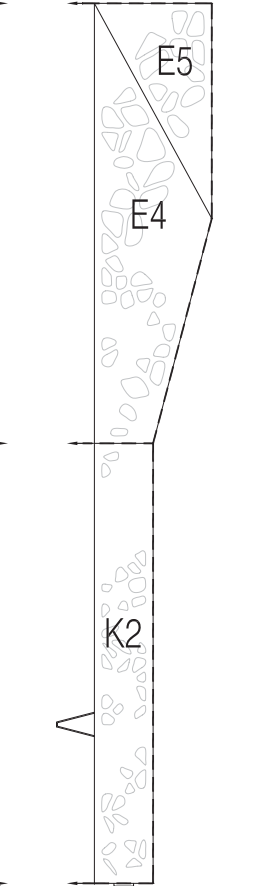
1 inside surface - panel labels scale: 1" = 1'-0"



2 side surface - panel labels scale: 1" = 1'-0"



3 outside surface - panel labels scale: 1" = 1'-0"



4 side surface - panel labels scale: 1" = 1'-0"

GENERAL NOTES

- FIELD VERIFY ALL DIMENSIONS PRIOR TO START OF WORK.
- ALL PANEL DRAWINGS ARE INTENDED FOR TWO IDENTICAL PANEL ASSEMBLIES. THERE ARE TWO GROUP A's, TWO GROUP B's, TWO GROUP C's, etc. THE SCULPTURE IS MADE UP OF TWO MATCHING PANEL ASSEMBLIES (A) THROUGH (K).
- ALL PANELS WITHIN A GIVEN GROUP ARE TO BE WELDED TOGETHER (REFER TO STRUCTURAL FOR DETAILS) PRIOR TO GALVANIZING AND/OR POWDER COATING. AFTER GALVANIZING AND/OR POWDER COATING PANEL GROUPS ARE TO BE MECHANICALLY FASTENED (REFER TO STRUCTURAL FOR DETAILS).

--- DIVISION BETWEEN WELDED GROUPS

reach architects

2333 amur dr.
austin, tx 78745
512.970.5669

NOT PERMITTED. ALL RIGHTS RESERVED BY REACH ARCHITECTS. DRAWINGS AND SPECIFICATIONS ARE INSTRUMENTS OF SERVICE AND SHALL REMAIN THE PROPERTY OF REACH ARCHITECTS. REUSED TO DESCRIBE OTHER PROJECTS, THEY ARE NOT TO BE USED IN OTHER PROJECTS OR EXTENDING TO THIS PROJECT EXCEPT BY AGREEMENT IN WRITING AND ARE NOT TO BE REPRODUCED OR COPIED FOR ANY PURPOSE. REACH ARCHITECTS AND ITS EMPLOYEES ARE RESPONSIBLE FOR THE DESIGN AND CONSTRUCTION OF THE PROJECT. REACH ARCHITECTS SHALL BE RESPONSIBLE FOR ALL LABOR AND MATERIALS REQUIRED IN ACCORDANCE WITH THE DESIGN. REACH ARCHITECTS SHALL NOT BE RESPONSIBLE FOR CONSTRUCTION METHODS, TECHNIQUES, STANDARDS OR PROCEDURES, OR FOR SAFETY PRECAUTIONS AND PROGRAMS IN CONNECTION WITH THE PROJECT. ALL WORK SHALL BE PERFORMED IN ACCORDANCE WITH ALL APPLICABLE CODES AND ORDINANCES.

THESE DOCUMENTS ARE FOR DESIGN REVIEW AND NOT INTENDED FOR CONSTRUCTION. REVISIONS OR PERMIT REQUIREMENTS, THEY WERE PREPARED BY, OR UNDER THE SUPERVISION OF:

ALAN KNOX, AIA
21045 043012

FINAL DESIGN REVIEW 03/23/2012

ISSUED FOR REVIEW
NOT FOR CONSTRUCTION

WATER TOWER
BIKE RACK

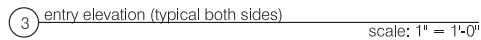
Austin, TX

PROJECT NUMBER: 1001

CONTENTS:

panel labels

A 201



- A. FIELD VERIFY ALL DIMENSIONS PRIOR TO START OF WORK.
- B. ALL PANEL DRAWINGS ARE FOR INTENDED FOR TWO IDENTICAL PANEL ASSEMBLIES. THERE ARE TWO GROUP A's, TWO GROUP B's, TWO GROUP C's, etc. THE SCULPTURE IS MADE UP OF TWO MATCHING PANEL ASSEMBLIES (A) THROUGH (K).
- C. ALL PANELS WITHIN A GIVEN GROUP ARE TO BE WELDED TOGETHER (REFER TO STRUCTURAL FOR DETAILS) PRIOR TO GALVANIZING AND/OR POWDER COATING. AFTER GALVANIZING AND/OR POWDER COATING PANEL GROUPS ARE TO BE MECHANICALLY FASTENED (REFER TO STRUCTURAL FOR DETAILS).

A 202