



Del Curto Neighborhood Park Park Development

Land, Facilities and Programs Committee

D'Anne Williams
Landscape Architect
Planning and Development Division
May 14, 2012





Location and History

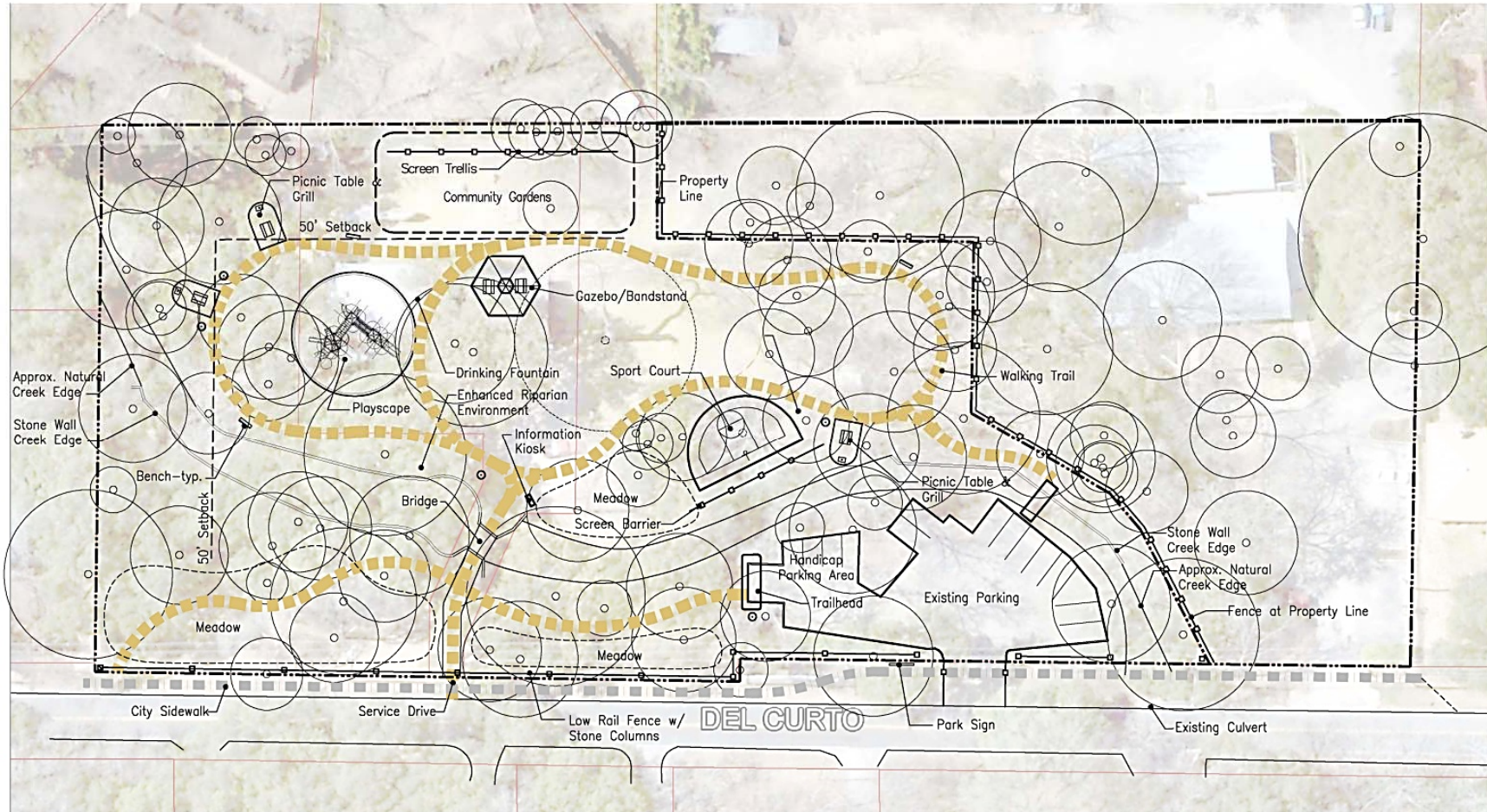


- The park is located in South Central Austin, east of Lamar Boulevard, south of Oltorf
- The property is 2 acres of mixed open space and mature trees
- A portion was purchased in March 2009 with parkland acquisition funds and a portion was dedicated as parkland by the developer.
- West Bouldin Creek runs through the property
- There is a small existing parking lot
- Access to the majority of park is over a small bridge

Site Photos



Public Process

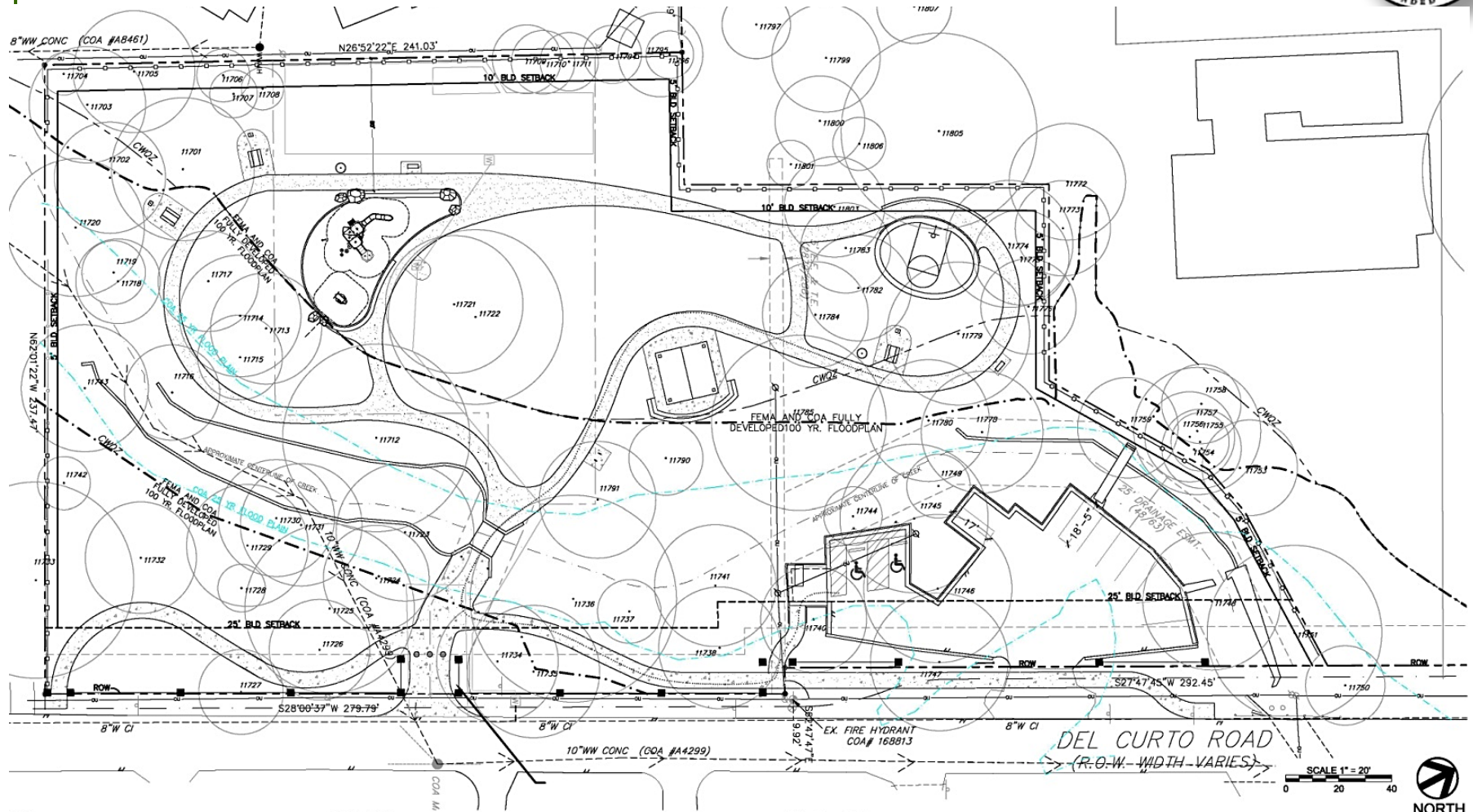


Preliminary Concept Plan

August 2009 through July 2010 – Design Meetings South Lamar Neighborhood Association



Site Plan



Amenities

- Winding Concrete Trail at front of property
- Decomposed Granite Trail Loop
- Picnic Pavilion with Stone Steps
- Half Basketball Court
- 5-12 year Playscape by Landscape Forms
- Climbing Rock
- 3-Picnic Tables on pads with grills
- 2- Benches
- Park Entrance sign
- Perimeter split log fence with columns
- New maintenance entrance driveway
- Resurfaced and stripped parking lot
- 2- Bike Racks
- Information Kiosk



Playscape





Implementation Plan (projected dates)

- Application for Planning Commission Permit submitted- July 2011
- Land, Facilities and Programs presentation/approval – May 14, 2012
- Parks Board presentation/approval – May 22, 2012
- Planning Commission presentation/approval – June/July 2012
- City Council presentation – August 2012
- Bidding document preparation – June- August 2012
- Project bid and contract – September/October 2012
- Project Construction – October – December 2012

