



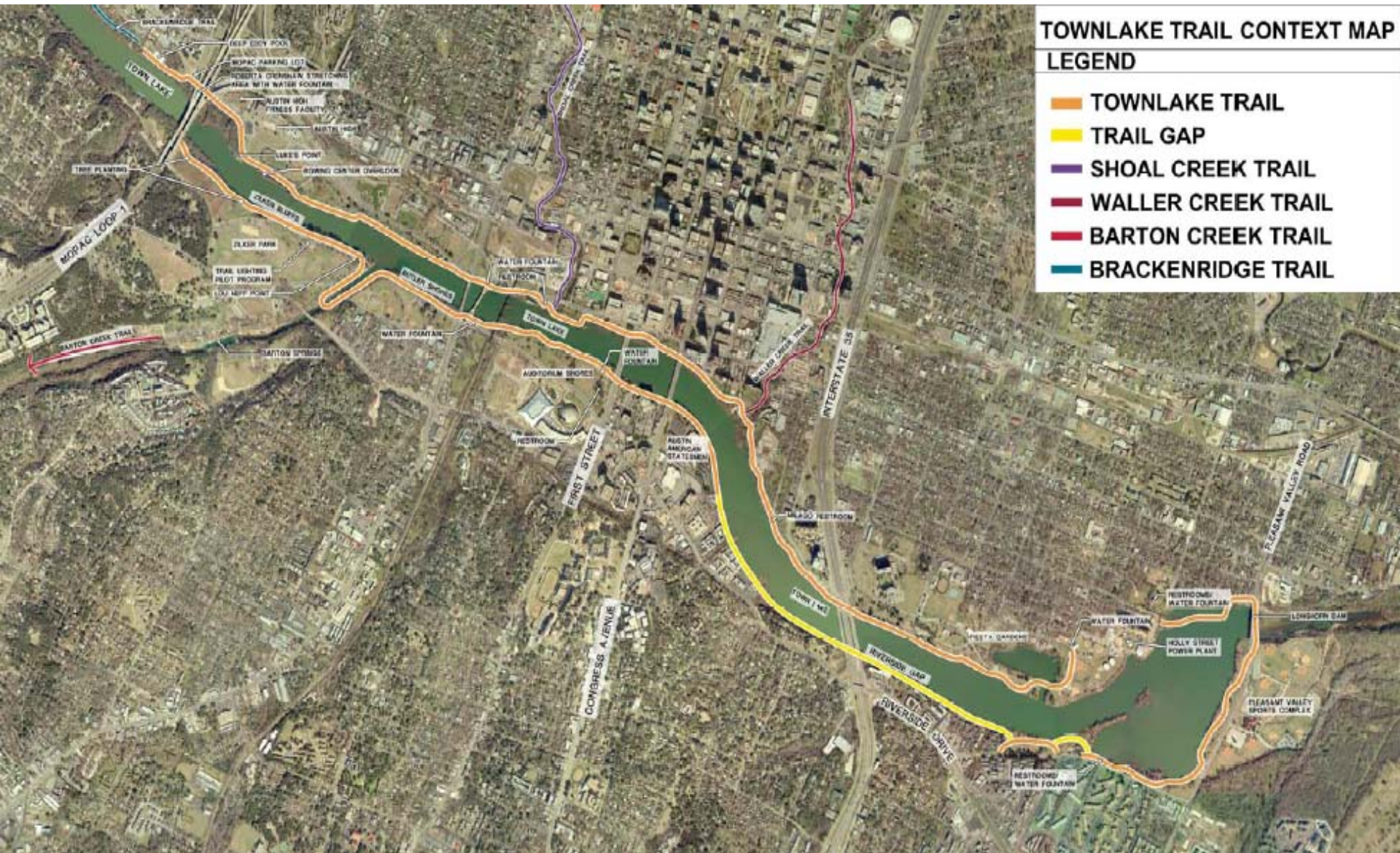
# **BOARDWALK TRAIL AT LADY BIRD LAKE**

**A 2010 MOBILITY BOND PROJECT**

**BOND OVERSIGHT COMMITTEE**

**5/11/2012**

# THE BUTLER TRAIL AT LADY BIRD LAKE



# PROJECT SUMMARY

- Objective – Safe, attractive, multi-use trail link.
- Timeline
  - City design began 8/08 w/public input
  - Preliminary alignment approved by Council 3/09
  - Construction funding from 2010 Mobility Bond and The Trail Foundation contributions
  - Final permitting currently underway
  - Bid approval anticipated 5/24/12
  - Construction start summer 2012; completion late 2013
- Funding strategy under development

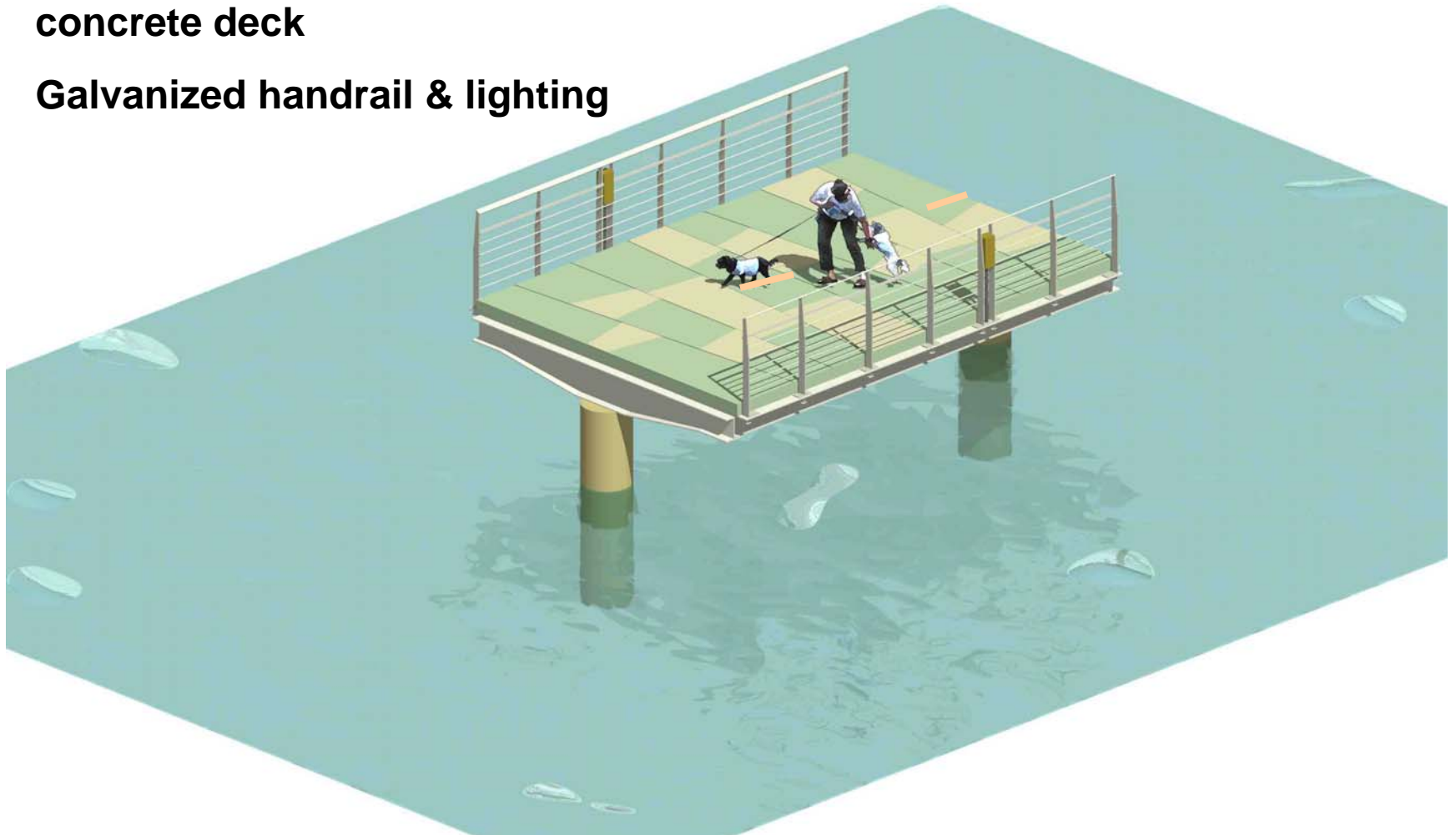


# KIT OF PARTS

**Typical 20' long x 14' wide deck section on  
24" dia. concrete piers & steel structure**

**With textured and integrally colored  
concrete deck**

**Galvanized handrail & lighting**



# SKYLINE SEGMENT

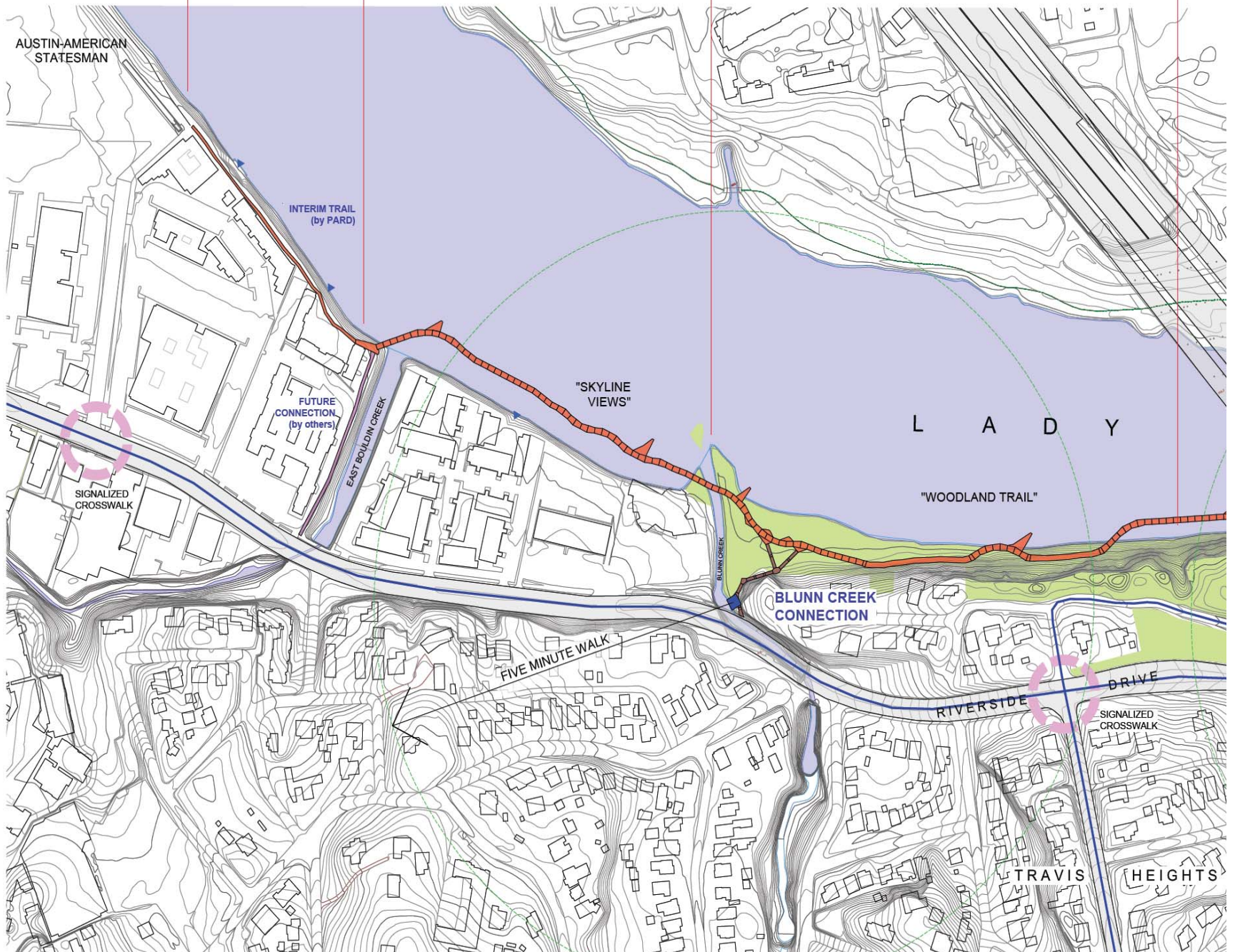




EAST RIVERSIDE  
750 ft.

SKYLINE SEGMENT  
1,030 ft.

WOODED CORRIDOR  
1,370 ft.





# BLUNN INTERSECTION

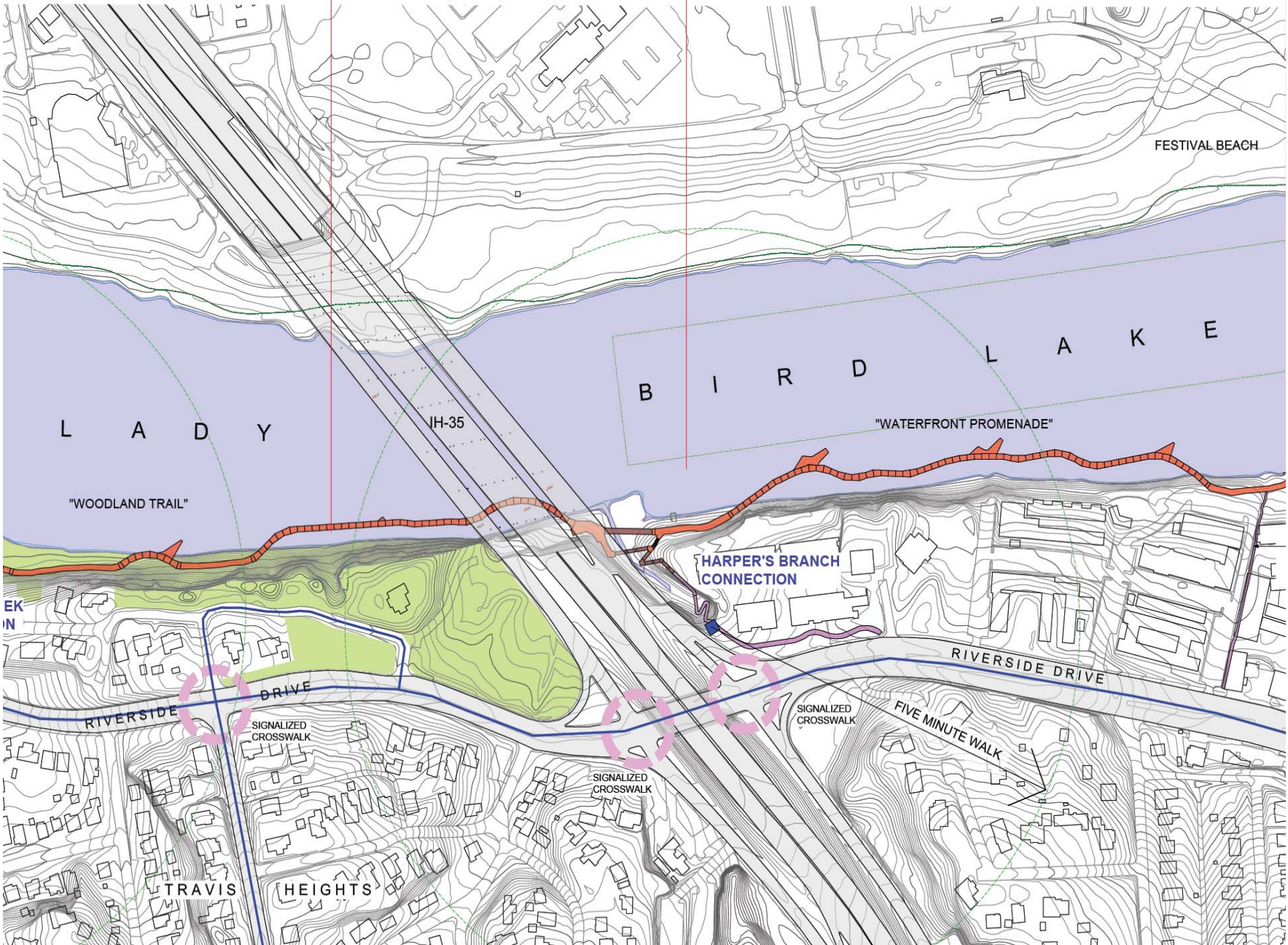




WOODED CORRIDOR  
1,370 ft.

IH-35 SEGMENT  
980 ft.

WATERFRONT PROMENADE  
1,650 ft.



FESTIVAL BEACH

B I R D L A K E

L A D Y

IH-35

"WATERFRONT PROMENADE"

"WOODLAND TRAIL"

WALK  
IN

HARPER'S BRANCH  
CONNECTION

RIVERSIDE DRIVE

RIVERSIDE DRIVE

SIGNALIZED  
CROSSWALK

SIGNALIZED  
CROSSWALK

FIVE MINUTE WALK

SIGNALIZED  
CROSSWALK

TRAVIS

HEIGHTS



# BOARDWALK FROM IH-35

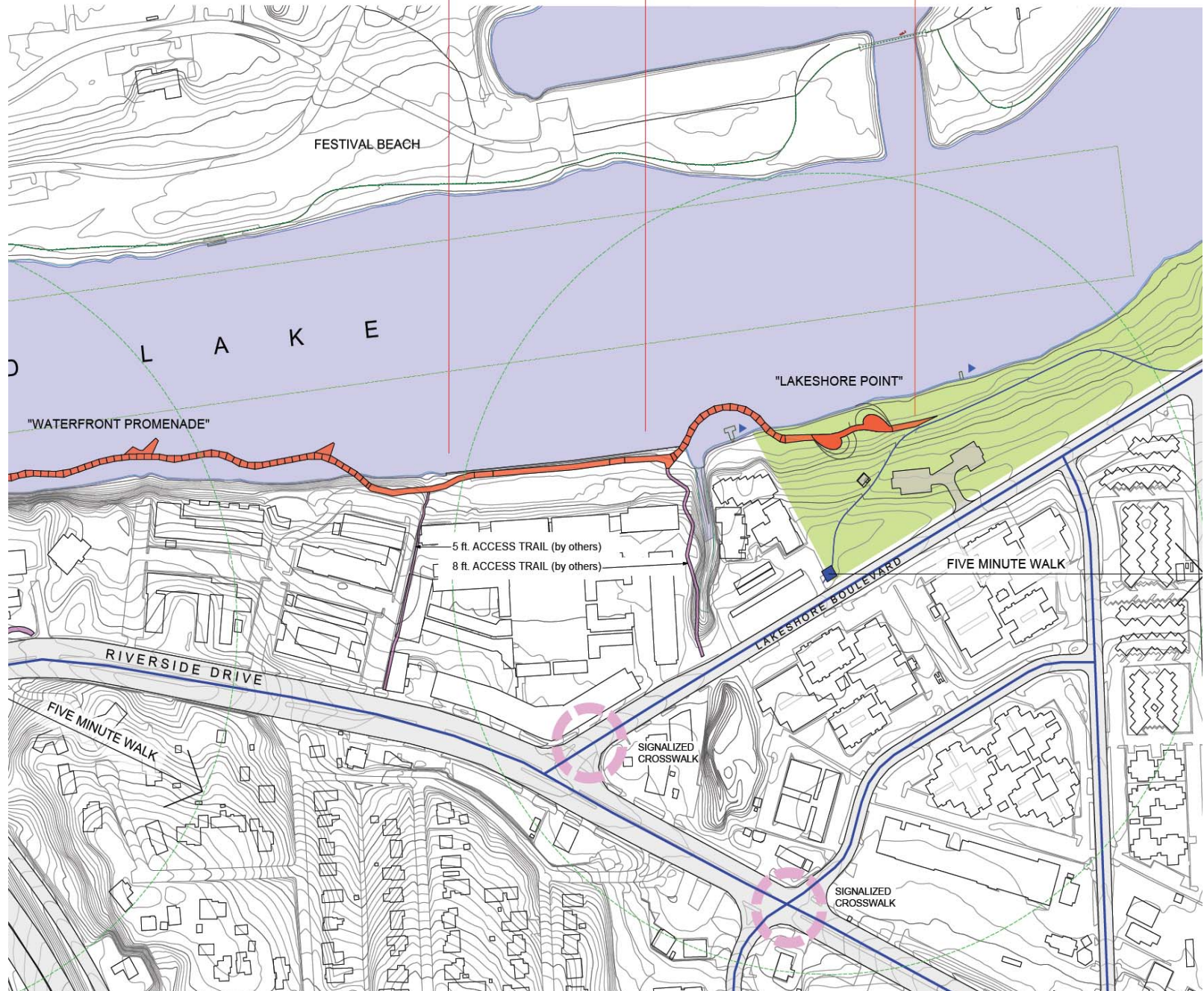




WATERFRONT PROMENADE  
1,650 ft.

AMLI SEGMENT  
530 ft.

LAKESHORE POINT  
710 ft.





# **BOARDWALK at BREAKERS**

## **West towards IH-35**



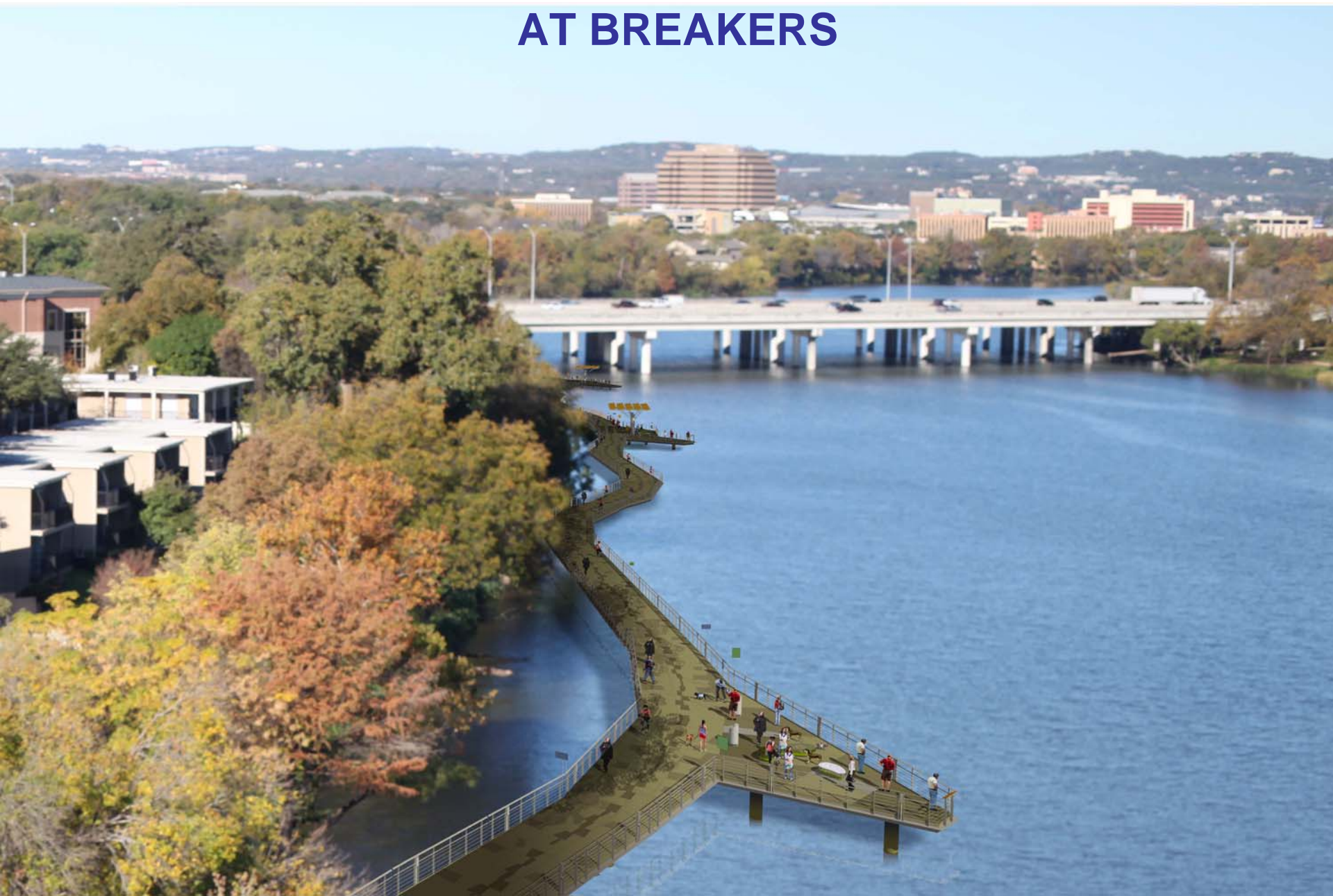
# SHADE STRUCTURE





# BIRD'S EYE VIEW

## AT BREAKERS



# LAKESHORE PLAZA

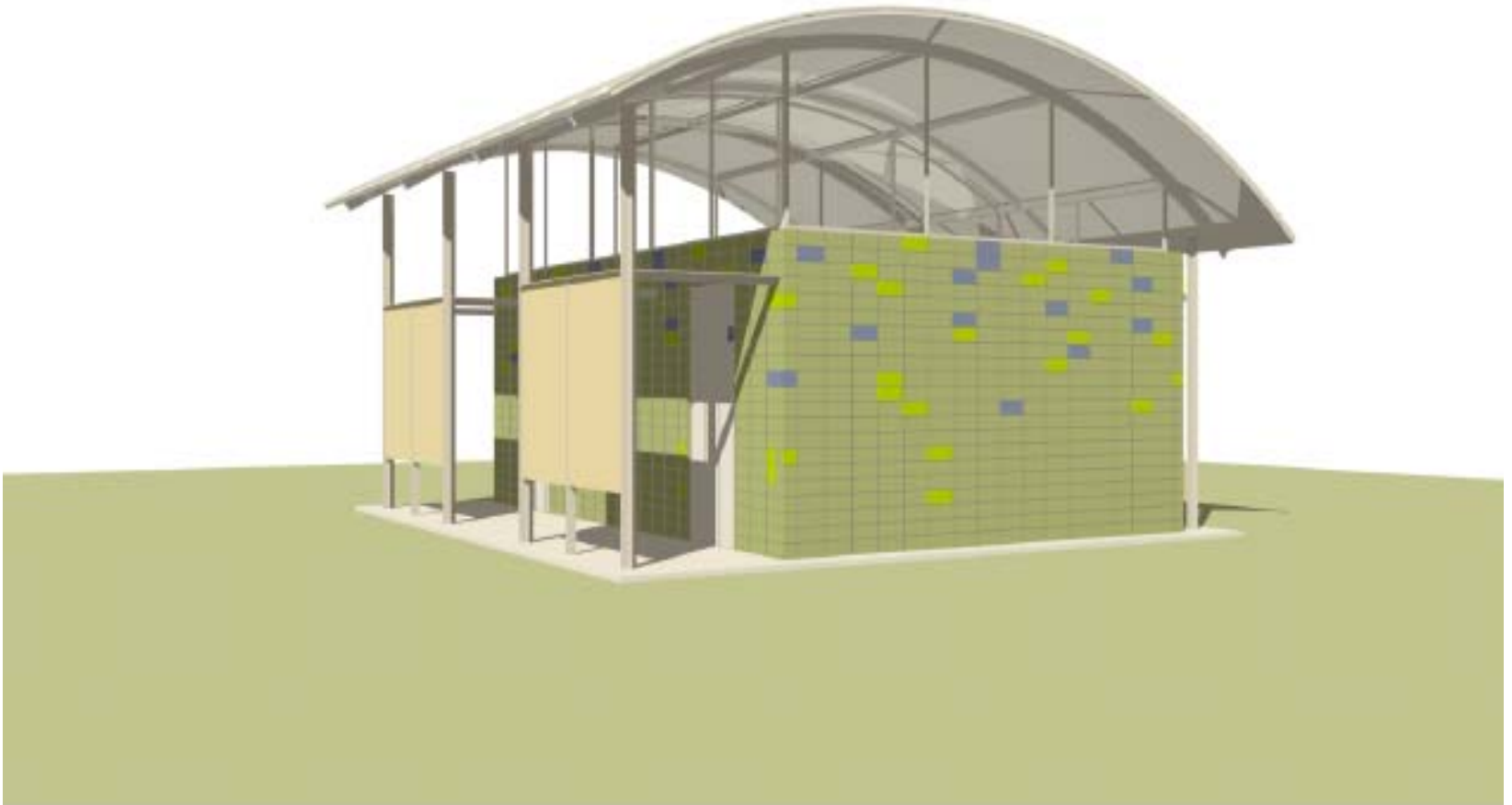
## PLAN VIEW





# RESTROOM

## AT LAKESHORE



# RECENT REVISIONS

- LED lighting in handrail
- Dashed centerline divider and regulatory signs
- Blunn access rerouted – no restroom
- Harper's Branch access redesigned
- Three shade structures on Promenade segment
- Replacement Restroom at Lakeshore trailhead
- Accessible parking nearby
- TTF Recognition panels at Lakeshore Plaza
- Structural engineering enhancements



# KEY PENDING ISSUES

- Bid Approval – funding, protest
- Easements
- Permitting – final hearings

# BOARDWALK TRAIL AT LADY BIRD LAKE

