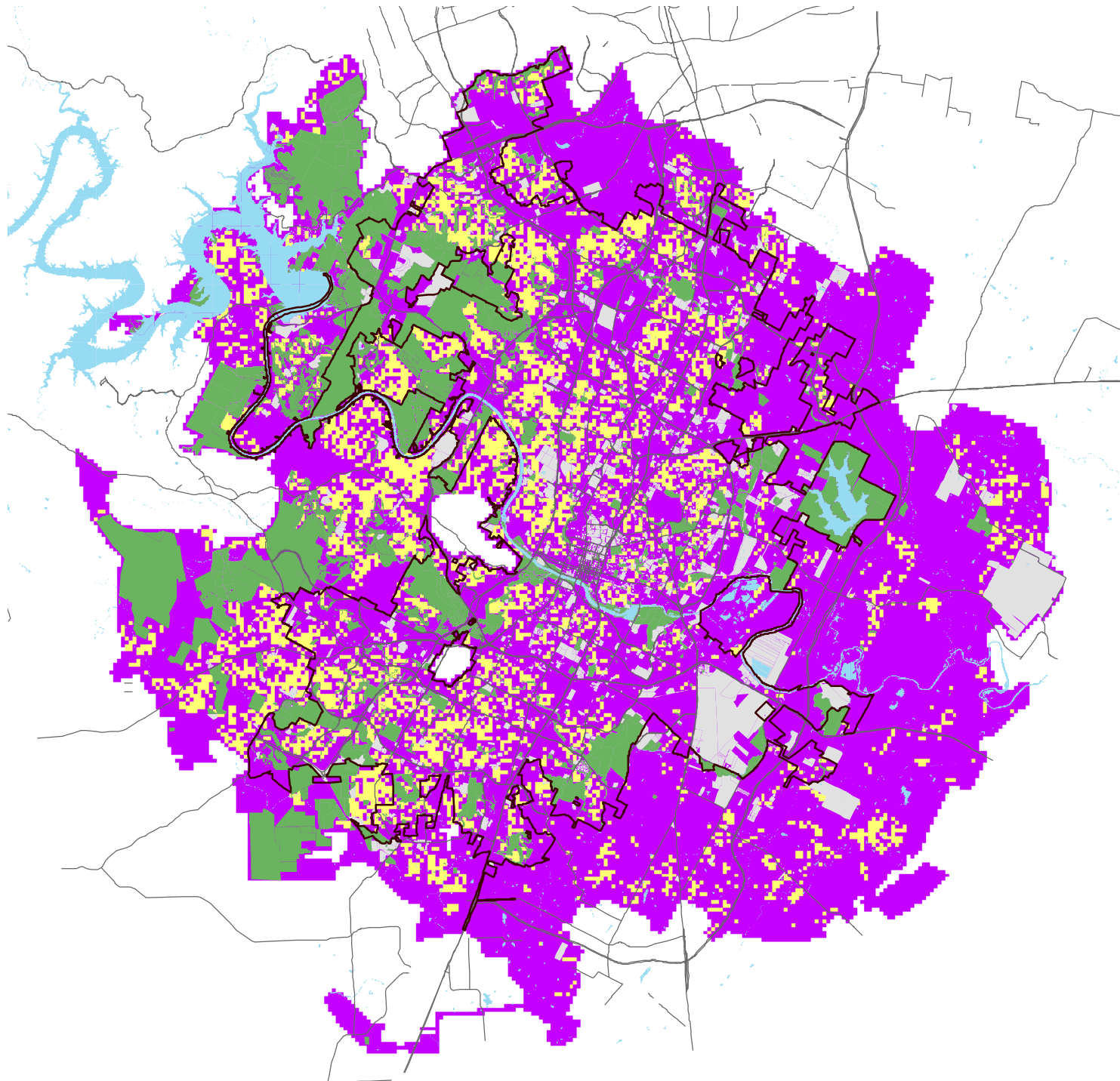





Owner Occupancy

Draft 2/22/2010

Austin Comprehensive Plan



- Preserve, Parkland, Cemetery
- Other Public Property
- Not owner occupied or not residential
- Owner-occupied residence

 Wallace Roberts & Todd, LLC

Data Source: City of Austin
0 0.5 1 2 3 4 Miles

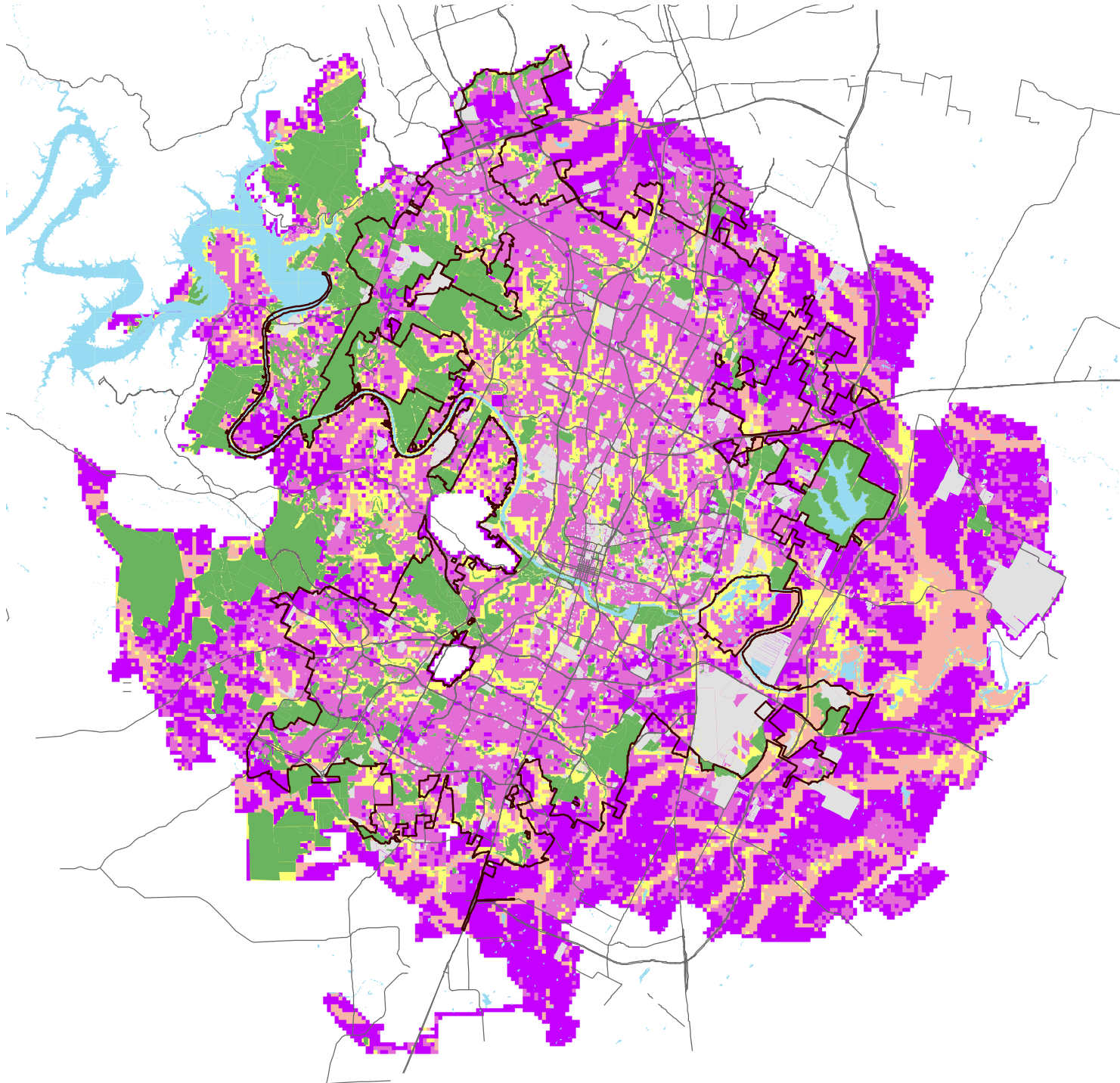




Land Status

Draft 2/22/2010

Austin Comprehensive Plan



- Preserve, Parkland, Cemetery
- Other Public Property
- Undeveloped, no constraints
- Developed, constraints

WRT Wallace Roberts & Todd, LLC

Data Source: City of Austin
0 0.5 1 2 3 4 Miles

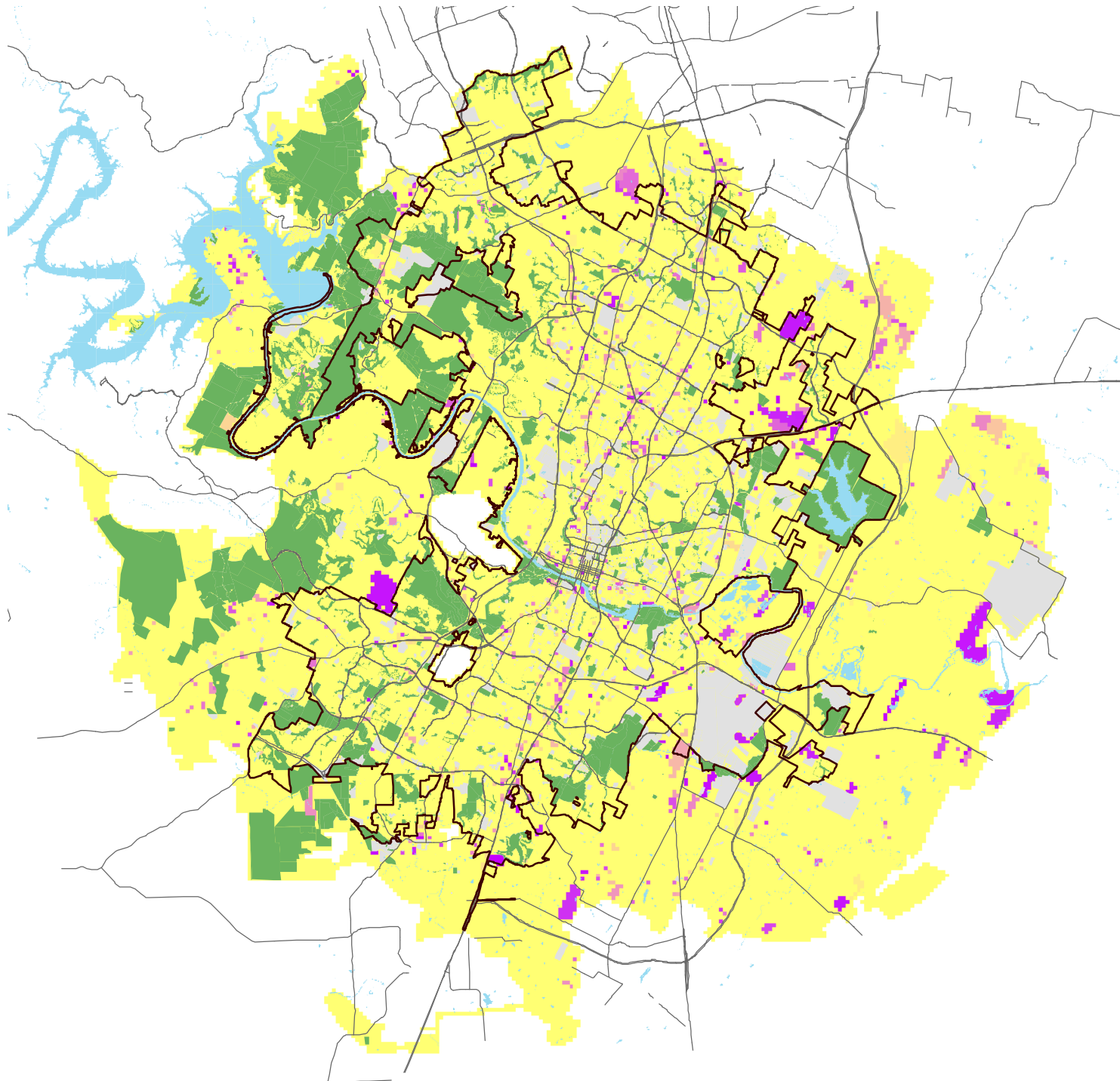




Improvement to Land Ratio

Draft 2/22/2010

Austin Comprehensive Plan



- Preserve, Parkland, Cemetery
- Other Public Property
- > 1.5
- 0 or not commercial

WRT Wallace Roberts & Todd, LLC

Data Source: City of Austin
0 0.5 1 2 3 4 Miles

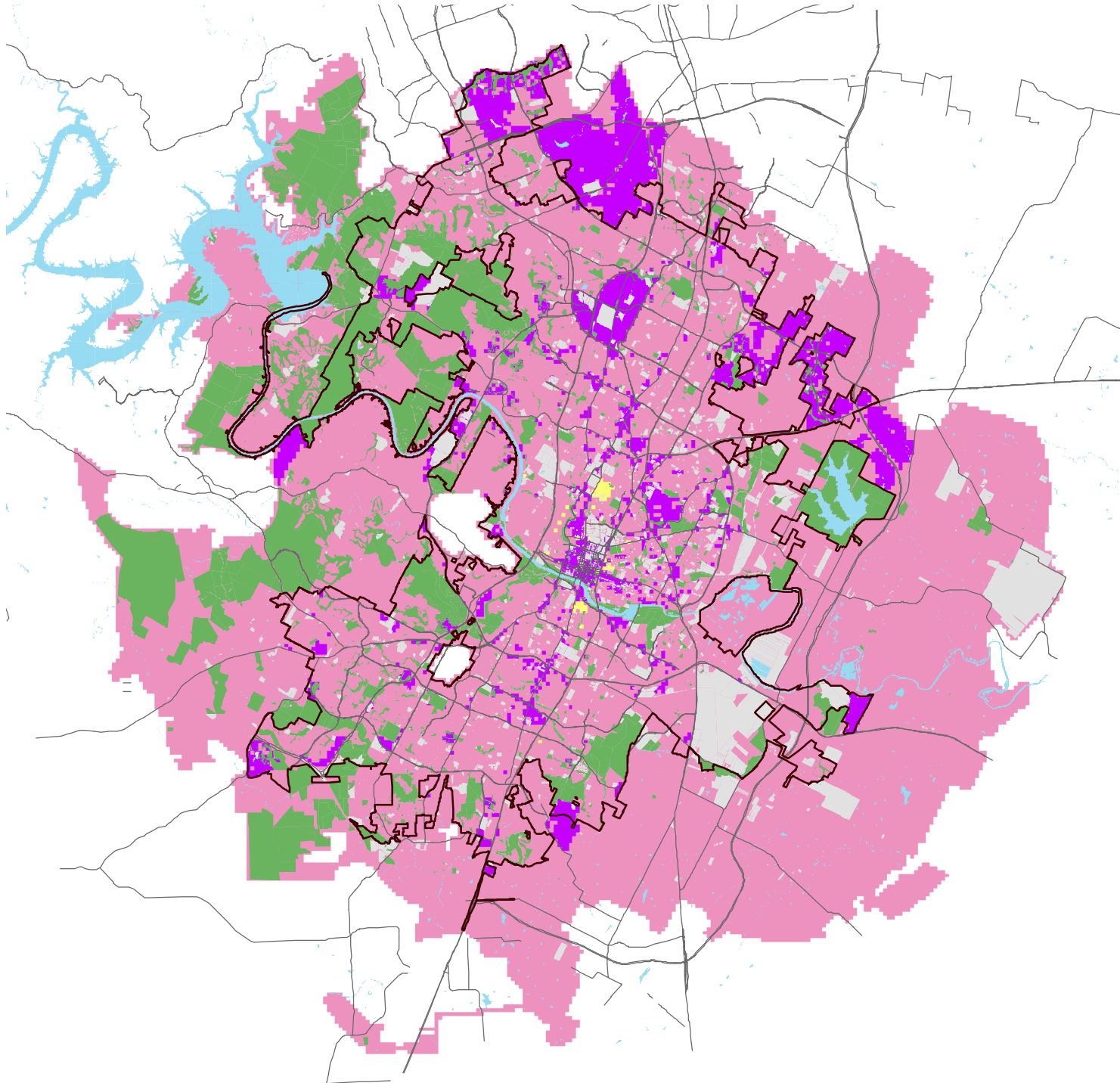





Zoning and Overlay Districts

Draft 2/22/2010

Austin Comprehensive Plan



- Preserve, Parkland, Cemetery
- Other Public Property
- Base/overlay districts effecting change
- Historic, NCCD districts

 Wallace Roberts & Todd, LLC

Data Source: City of Austin
0 0.5 1 2 3 4 Miles

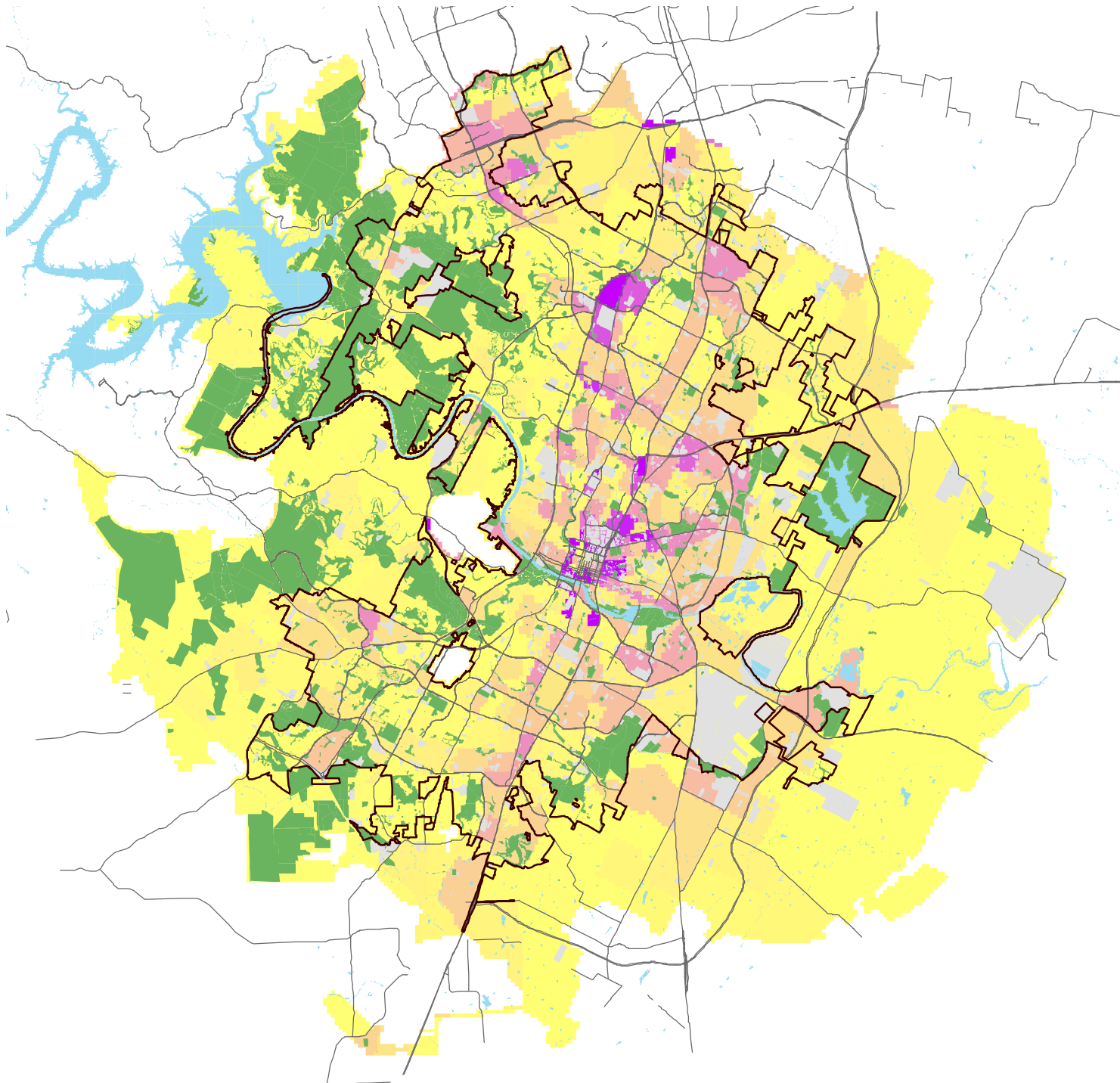




Projected Growth in Employment

Draft 2/22/2010

Austin Comprehensive Plan



- Preserve, Parkland, Cemetery
- Other Public Property
- Most employment growth
- Least employment growth

WRT Wallace Roberts & Todd, LLC

Data Source: City of Austin
0 0.5 1 2 3 4 Miles

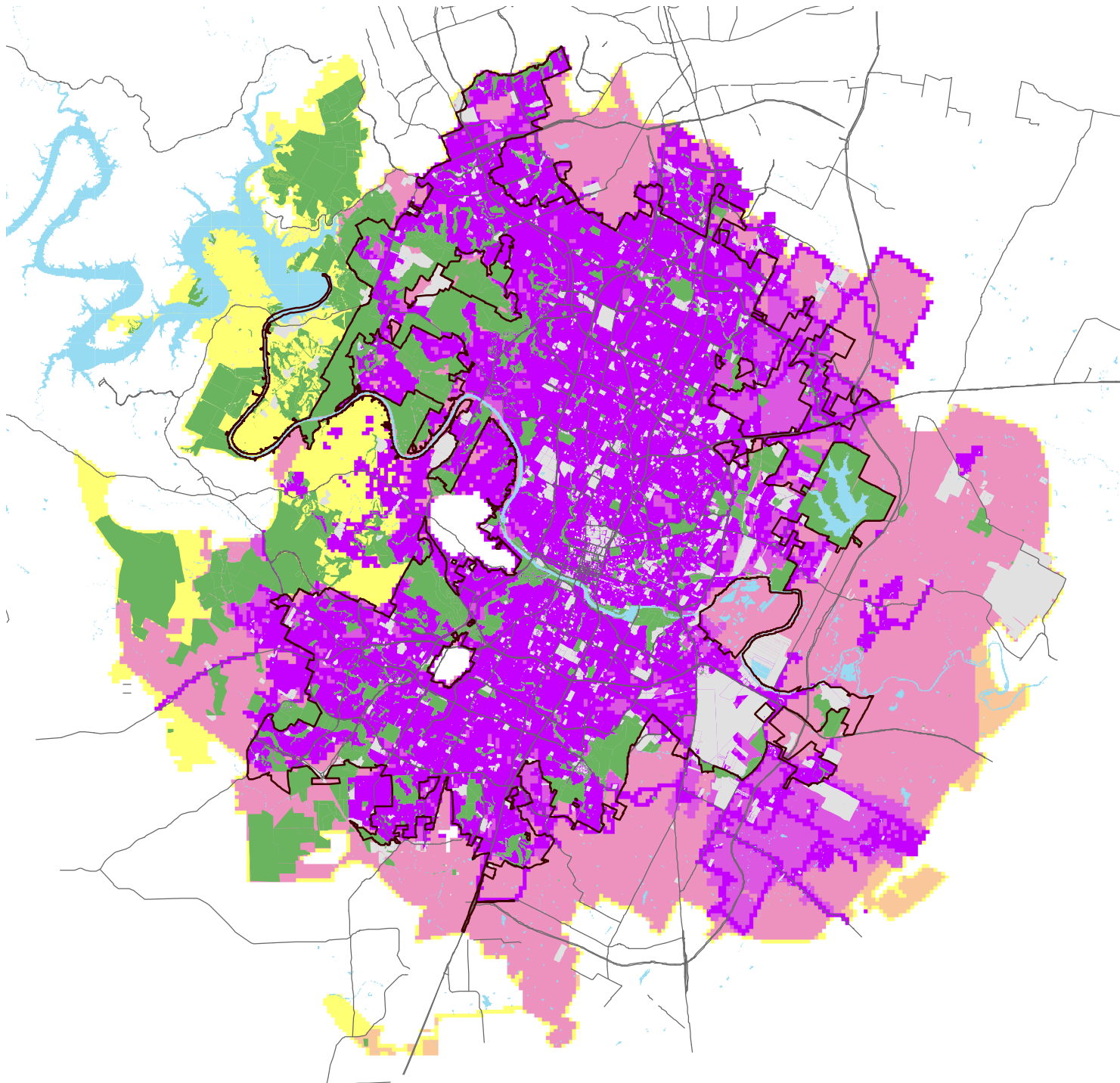




Water Service

Draft 2/22/2010

Austin Comprehensive Plan



- Preserve, Parkland, Cemetery
- Other Public Property
- Currently served by water system
- Outside Impact Fee area, in DWPZ

WRT Wallace Roberts & Todd, LLC

Data Source: City of Austin
0 0.5 1 2 3 4 Miles

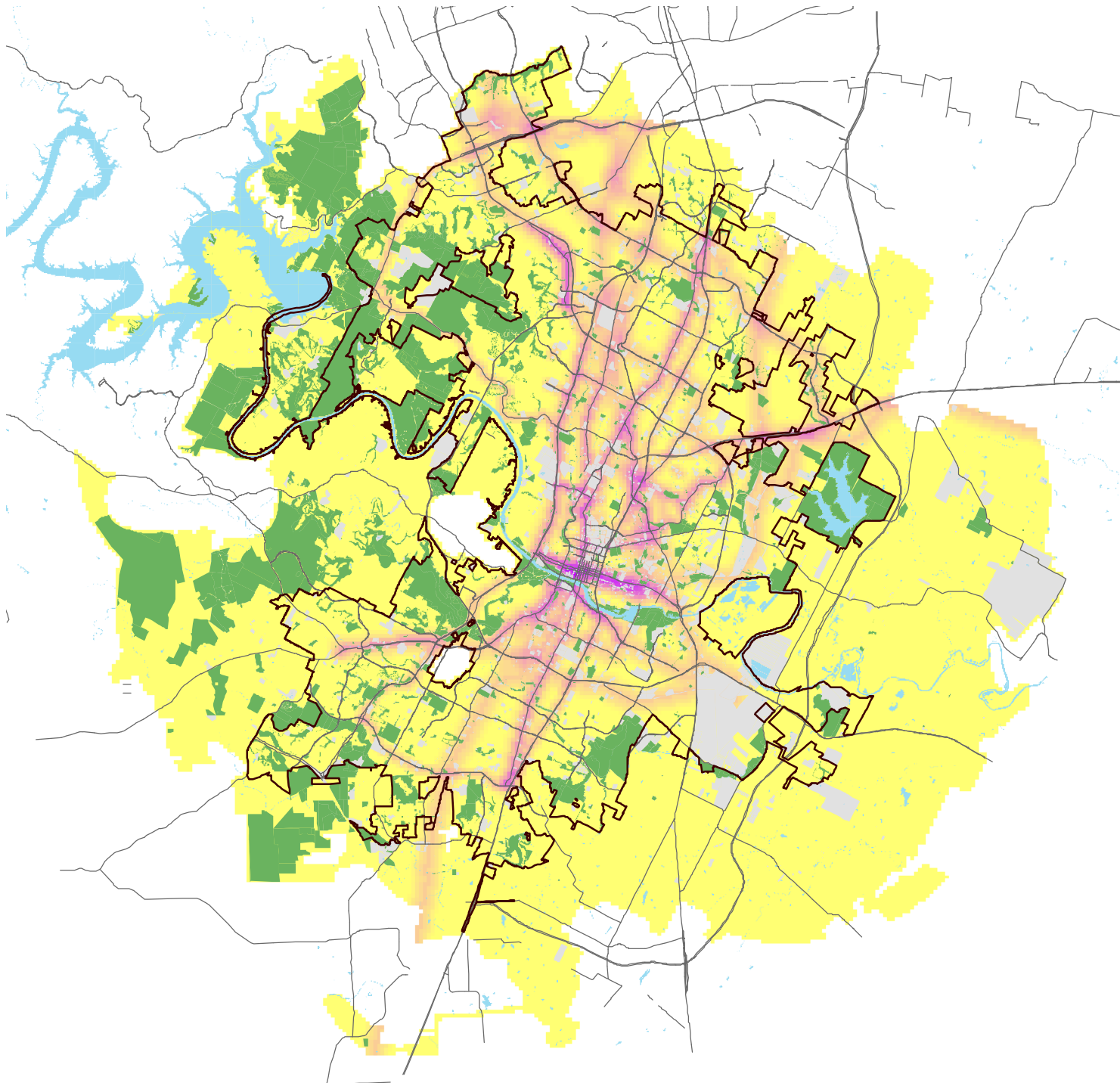




Transit Corridors

Draft 2/22/2010

Austin Comprehensive Plan



- Preserve, Parkland, Cemetery
- Other Public Property
- Well served by transit
- Not well served by transit

WRT Wallace Roberts & Todd, LLC

Data Source: City of Austin
0 0.5 1 2 3 4 Miles

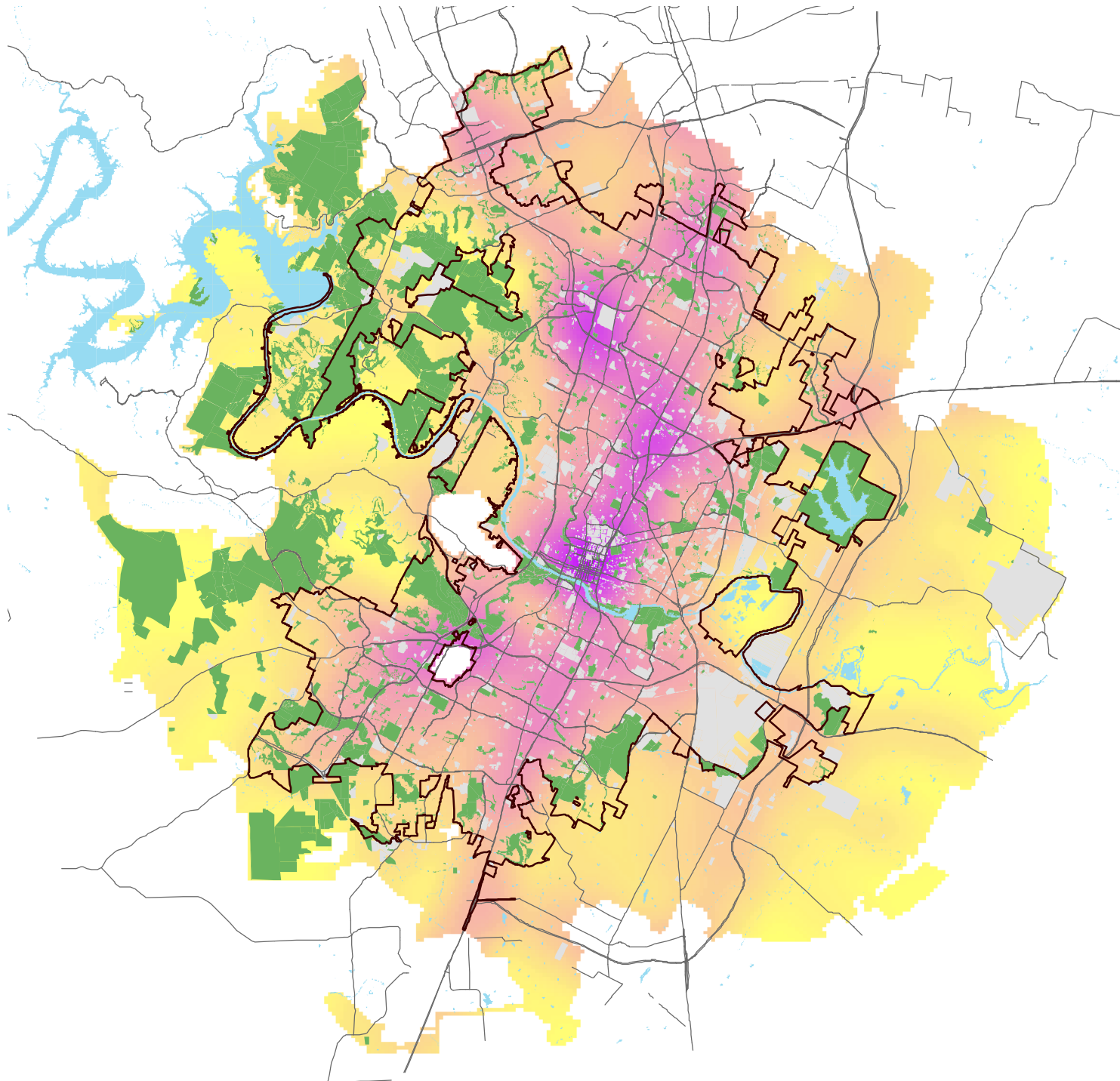




Road Access

Draft 2/22/2010

Austin Comprehensive Plan



- Preserve, Parkland, Cemetery
- Other Public Property
- Best road access
- Worst road access

WRT Wallace Roberts & Todd, LLC

Data Source: City of Austin
0 0.5 1 2 3 4 Miles

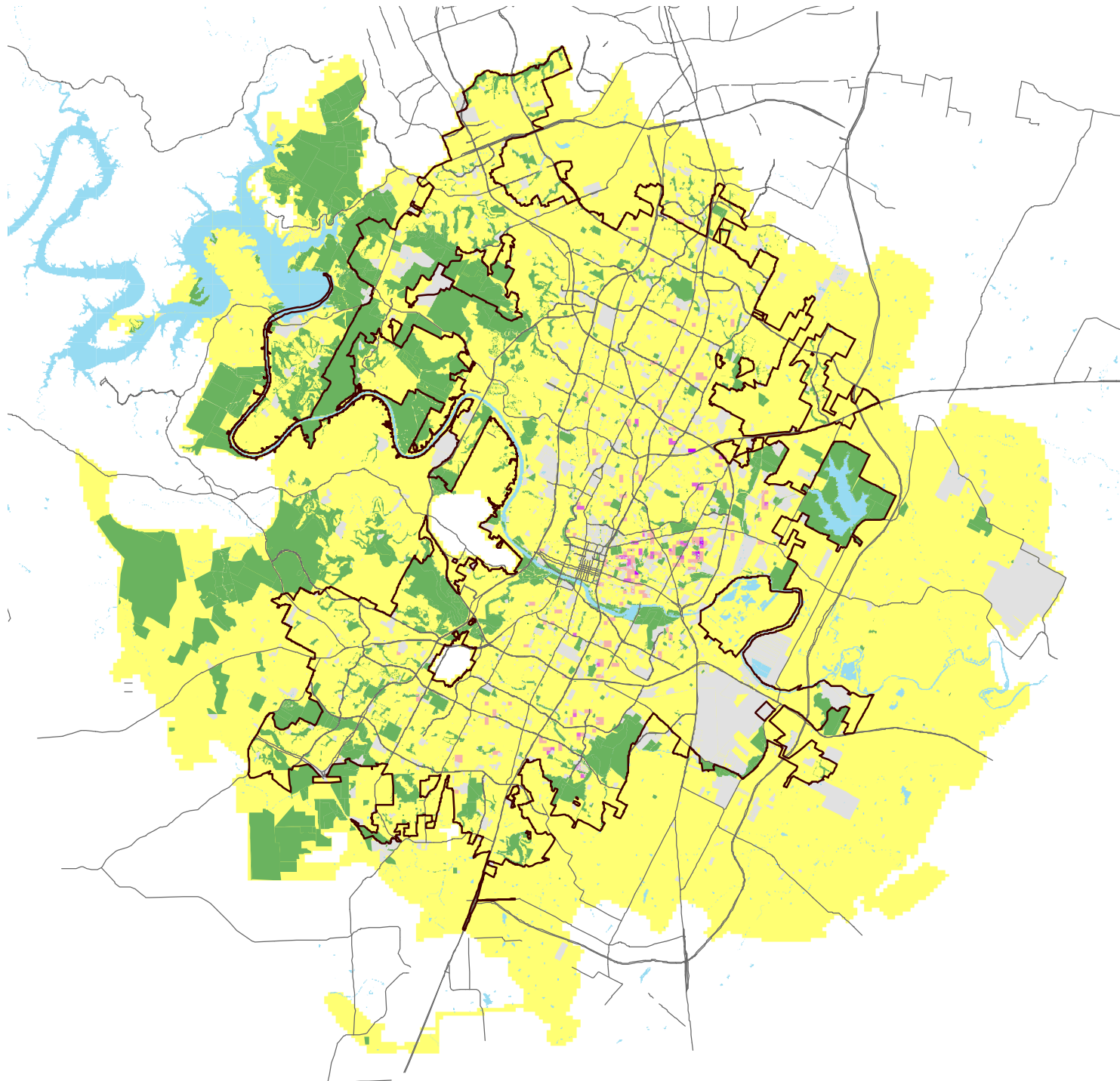




Property Violations

Draft 2/22/2010

Austin Comprehensive Plan



- Preserve, Parkland, Cemetery
- Other Public Property
- Most property violations
- No property violations

WRT Wallace Roberts & Todd, LLC

Data Source: City of Austin
0 0.5 1 2 3 4 Miles

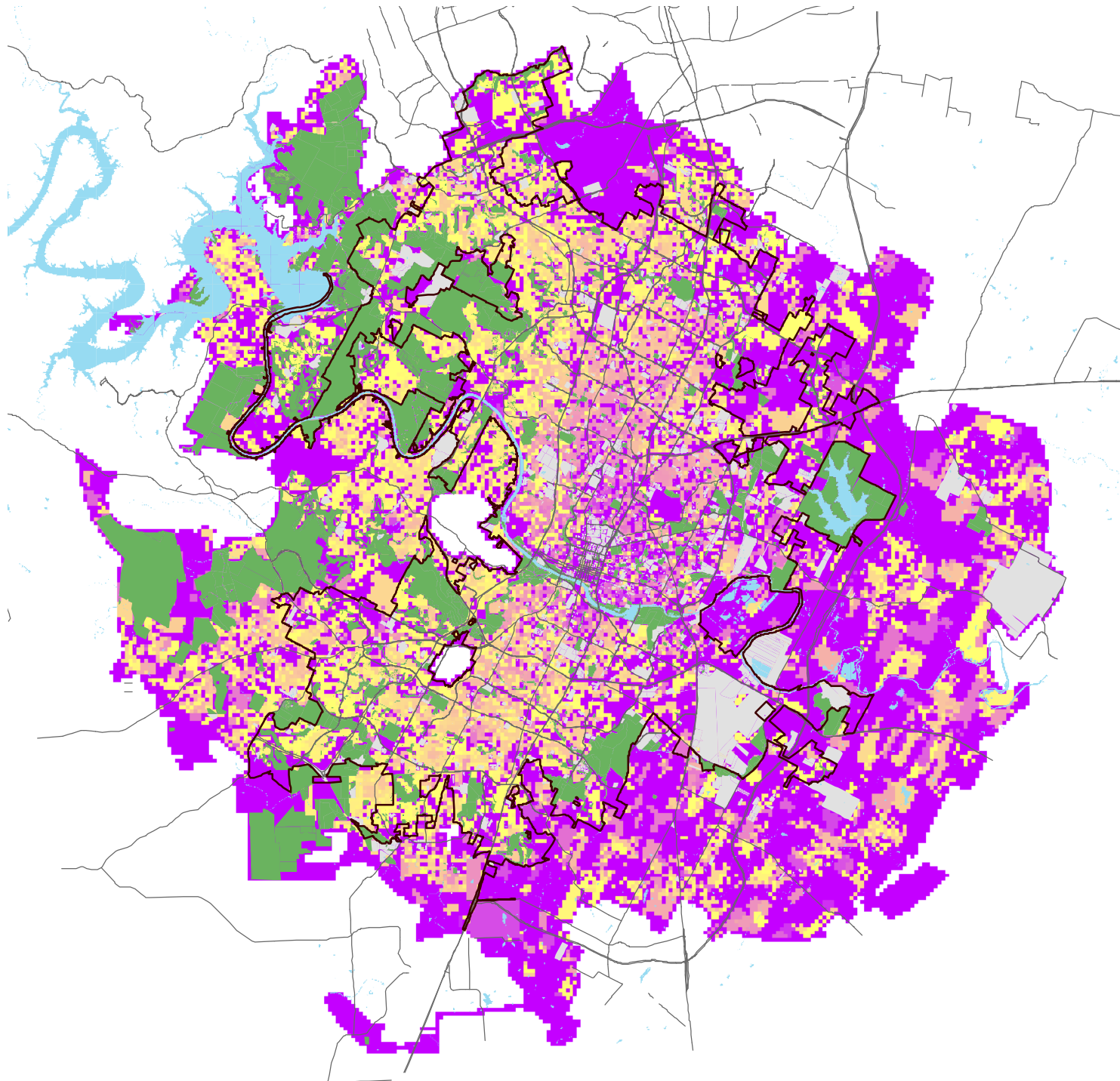





Year Built

Draft 2/22/2010

Austin Comprehensive Plan



- Preserve, Parkland, Cemetery
- Other Public Property
- Built in 1900 or earlier, or undeveloped
- Built in 2000 or later

 Wallace Roberts & Todd, LLC

Data Source: City of Austin
0 0.5 1 2 3 4 Miles

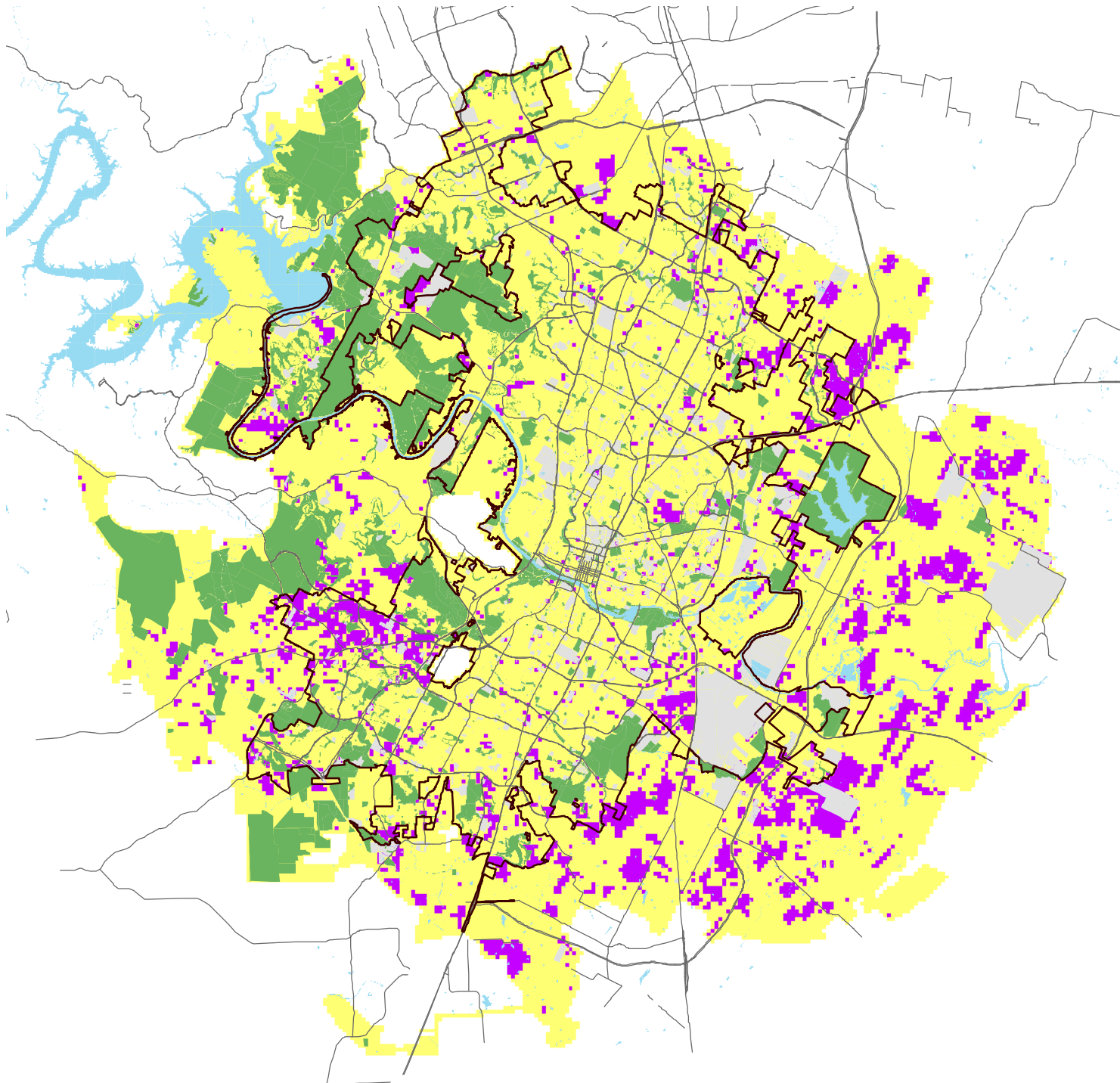





Development Cases

Draft 2/22/2010

Austin Comprehensive Plan



- Preserve, Parkland, Cemetery
- Other Public Property
- Areas with development cases
- Developed or areas without cases

 Wallace Roberts & Todd, LLC

Data Source: City of Austin
0 0.5 1 2 3 4 Miles

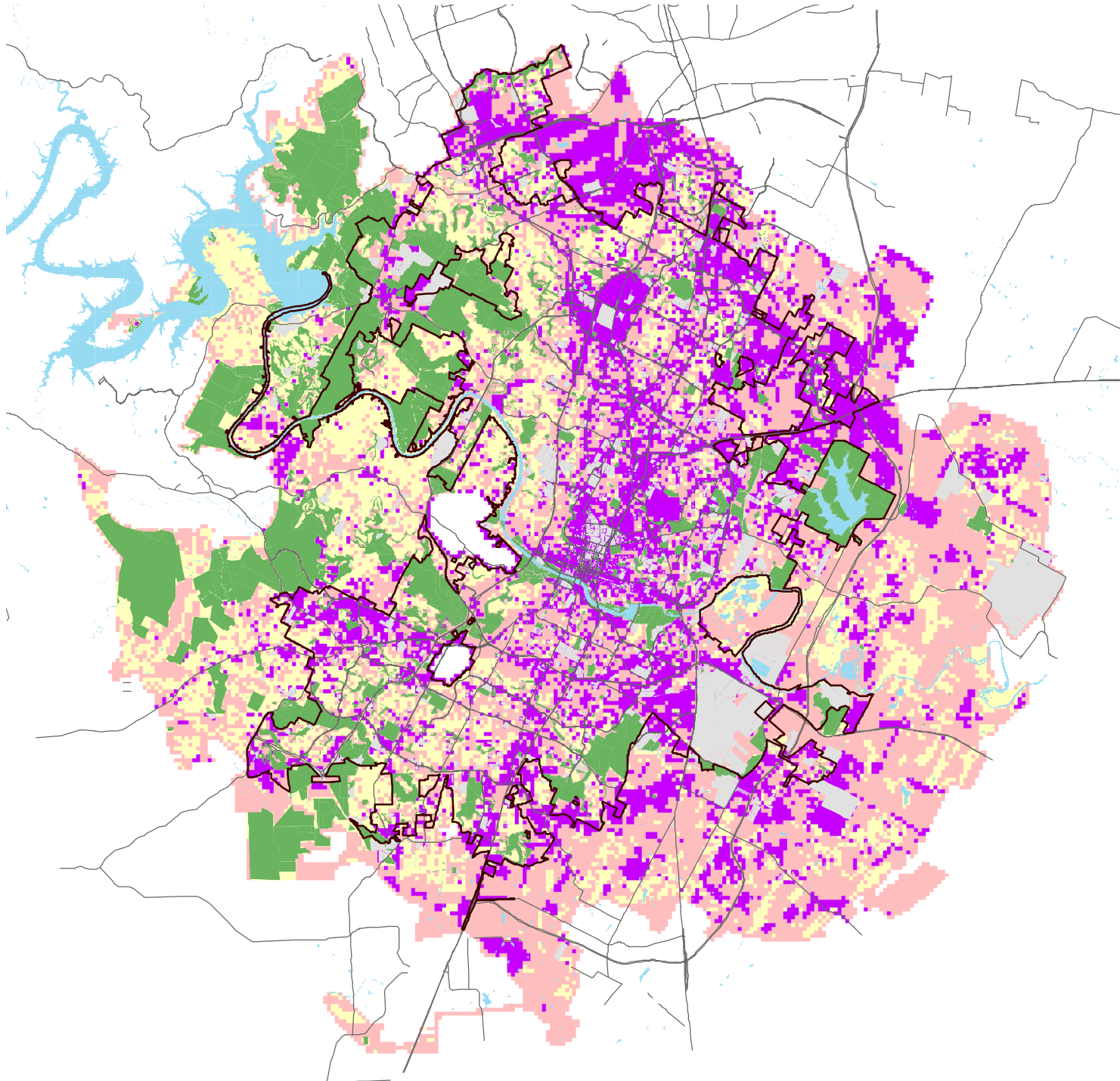




Susceptibility to Change

Draft 2/22/2010

Austin Comprehensive Plan



- Preserve, Parkland, Cemetery
- Other Public Property
- Least susceptible to change
- Moderately susceptible to change
- Most susceptible to change



Wallace Roberts & Todd, LLC

Data Source: City of Austin

0 0.5 1 2 3 4 Miles

