

Service Extension Request (Wastewater) Circle Drive PEC Tract (SER #2696)

1) Will future development be required to comply with current code?

The service extension will provide water and wastewater to an apartment with 264 units located in the Barton Springs Contributing Zone in Slaughter Creek. Development must comply with current code and has an approved site plan.

2) Does the requested service result in more intense development than would be possible absent the service?

To the extent that the applicant had room to treat wastewater onsite, then the service extension does not result in more intense development. The applicant is limited to 25% impervious cover on a net site area basis with or without the service.

3) Is the site in an area in which we are encouraging development?

The site is located in the DWPZ.

4) Would centralized service solve known or potential environmental problems?

Absent service, the applicant would need to treat wastewater onsite and rely on groundwater for their potable water needs.

5) Is serving the area consistent with long term service area and annexation goals?

The project is located within Austin's CCN and nearby the city's full purpose annexation area. In August, 2007, the applicant requested annexation into the city.

DRAFT

WATER AND WASTEWATER
SERVICE EXTENSION
REQUEST FOR
CONSIDERATION

Name: Circle Drive PEC Tract

Service Requested: Wastewater

SER-2696

Date Received: 08/24/2007

Location: 9101 CIRCLE DR AUSTIN TX 78736- CIRCLE DRIVE PEC TRACT

Acres: 44.79

Land Use: APARTMENTS

Alt. Utility Service or S.E.R. Number: City of Austin Water SER-2695

Quad(s): WZ19 A19

DDZ: NO

Drainage Basin: SLAUGHTER

Pressure Zone: SWC1

DWPZ: YES

Flow: (Estimated Peak Wet Weather Flow, Gallons per Minute) 113 GPM

% Within City Limits: 0

Cost Participation: \$0.00

% Within Limited Purpose: 0

Description of Improvements:

Applicant will construct approximately 3,100 feet of 8-inch gravity wastewater line from the existing 8-inch gravity wastewater line (Project 2004-0632) in TOWANA TRL, west along TOWANA TRL to MOWINKLE DR and south along MOWINKLE DR to CIRCLE DR and continue west along CIRCLE DR with approximately 1,450 feet of 8-inch gravity wastewater line to the subject tract.

Completion and acceptance of the improvements described above and the conditions set forth below:

- 1) Construction of all Service Extensions is subject to all environmental and planning ordinances.
- 2) Service Extensions are subject to the guidelines established in the Land Development Code, Section 25-9, Water and Wastewater Utility Service.
- 3) The level of service approved by this document does not imply commitment for land use.
- 4) The proposed offsite wastewater improvements will be dedicated to The City of Austin for ownership, operation, and maintenance.
- 5) The proposed offsite wastewater improvements must be placed in the Public Right-of-Way or Approved Utility Easements. Utility Easements must be in place prior to Construction Plan Approval.
- 6) The approved Service Extension will automatically expire 120 days after date of approval unless a development application has been accepted by the Watershed Protection and Development Review Department. The Service Extension expires on the date the development expires, or if approved, on the date the development application approval expires.
- 7) Approval by the City Council will be required based on City of Austin Ordinance § 25-9-34.

Prepared By Utility Development Services Date

Division Manager, Utility Development Services Date

Division Manager, Systems Planning Date

Assistant Director, Water Resources Management Date

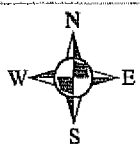
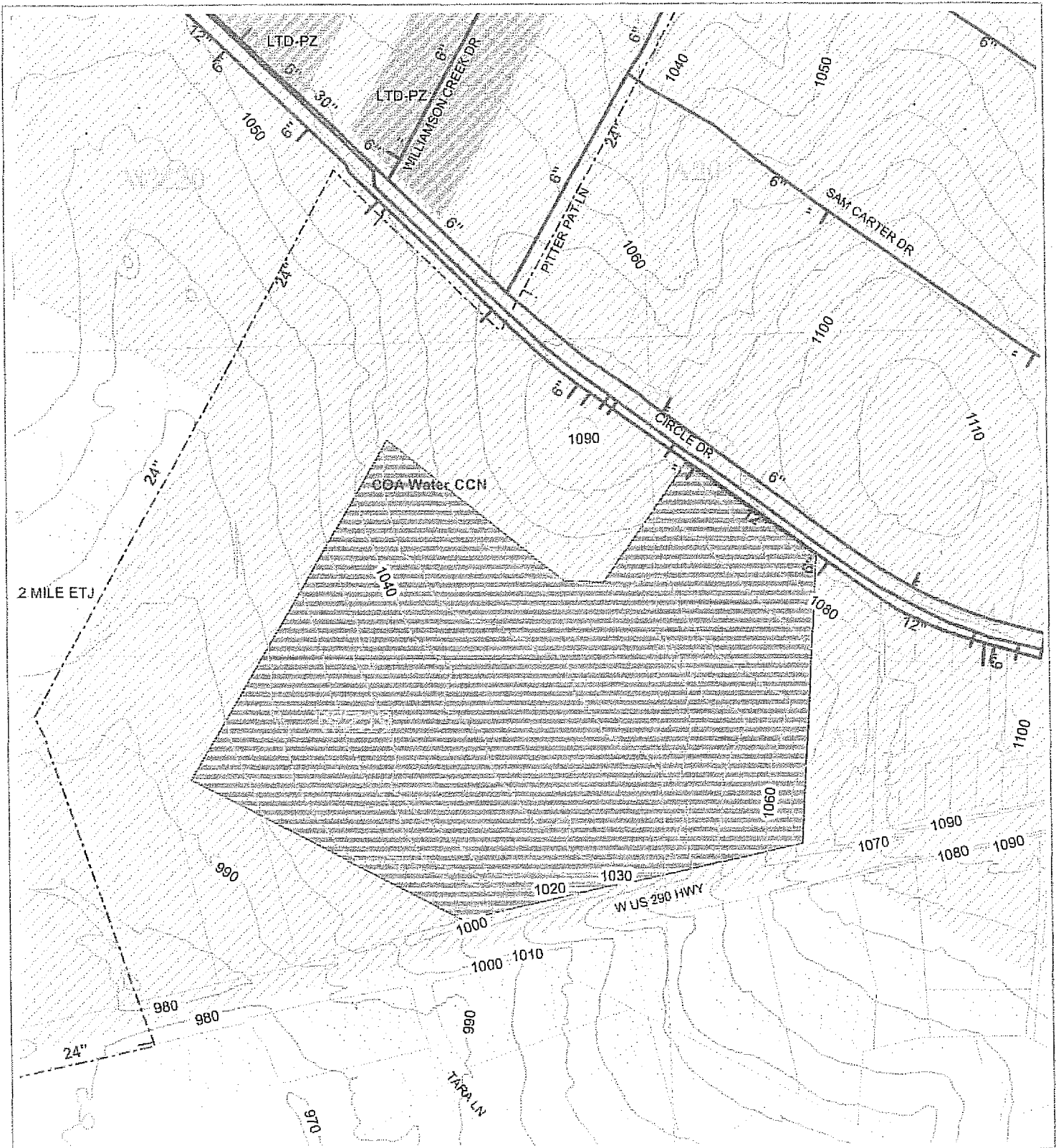
Division Manager, Facility Engineering Date

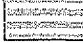




Assistant Director, Engineering Program Date

Watershed Protection Date

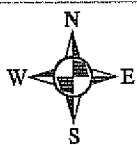
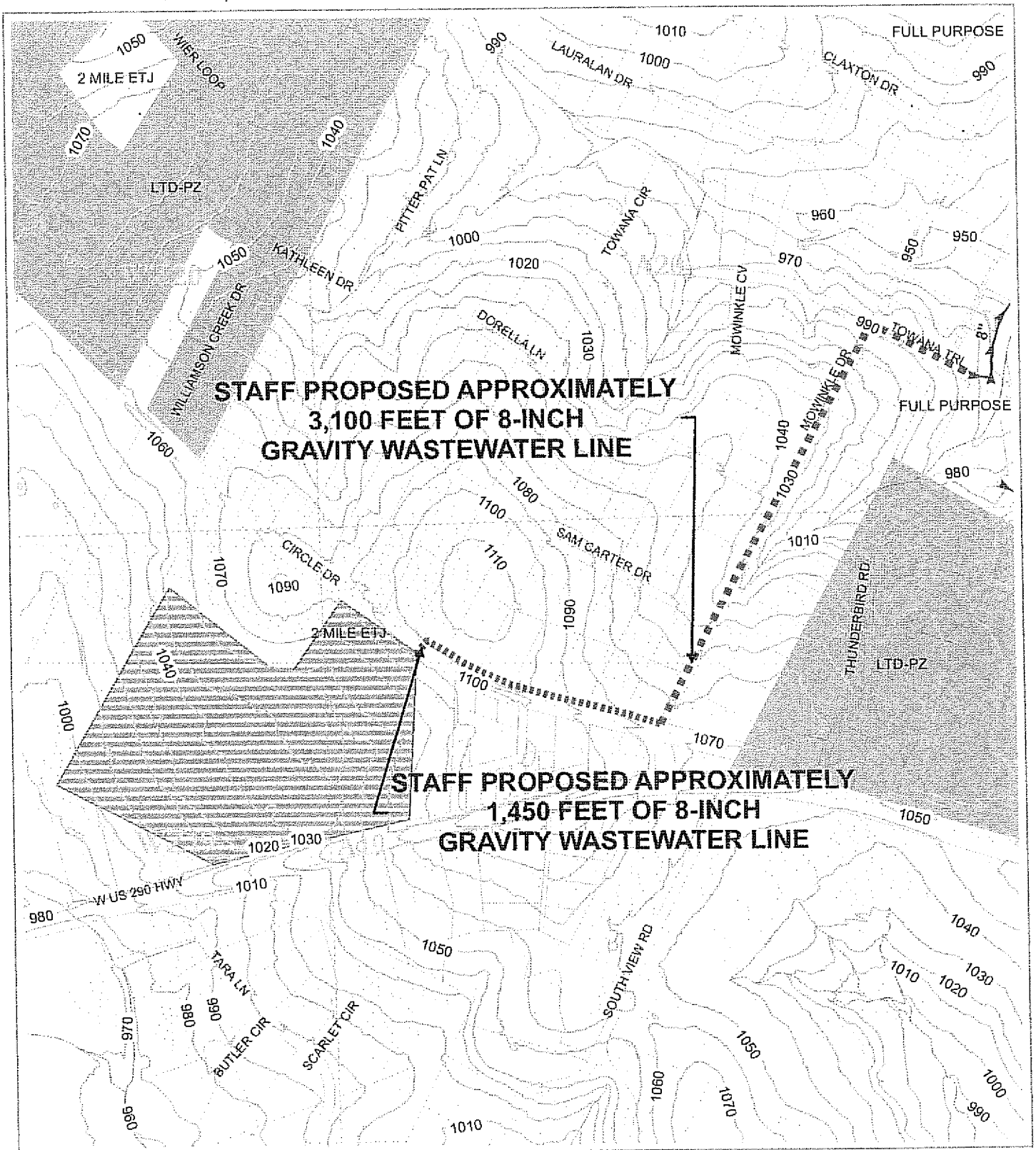
Director, Austin Water Utility Date

Hansen Service Request Number 319986



-  Subject Tract
-  Full-purpose City Limit
-  Limited-purpose City Limit
-  2-Mile ETJ
-  Austin Water CCN

W. S.E.R. Name: Circle Drive PEC Tract
W. S.E.R. Number: 2695



750 375 0 750 Feet



Subject Tract



Full-purpose City Limit



Limited-purpose City Limit

2-Mile ETJ

W.W. S.E.R. Name: Circle Drive PEC Tract

W.W. S.E.R. Number: 2696

Utility Development Services Plotted 09/19/2007

Service Extension Request (Wastewater) Bridgeview Terrace (SER #2692)

1) Will future development be required to comply with current code?

The service extension will provide wastewater to a small single family development (4.74 acres) located in the Lake Austin Watershed. Development must comply with current code (Water Supply Rural) and the applicant has an approved subdivision plan and a pending site plan application (SP-2007-0385DS) for the wastewater line's construction.

2) Does the requested service result in more intense development than would be possible absent the service?

The provision of centralized wastewater allows the applicant to develop the site to the maximum extent allowed under the code; however, as currently proposed, service will only be extended to one or two lots totaling approximately 4.74 acres. Absent wastewater service the applicant would be limited to one acre lots, which is the minimum area required to treat wastewater onsite.

3) Is the site in an area in which we are encouraging development?

The site is located in the Lake Austin Watershed and the wastewater line crosses land located in both the city's full purpose annexation area and its ETJ in the DWPZ.

4) Would centralized service solve known or potential environmental problems?

Absent service, the applicant would need to treat wastewater onsite.

5) Is serving the area consistent with long term service area and annexation goals?

The project is located within Austin's Impact Fee-Service Area and crosses land that is partially within the city's full purpose annexation area and its two mile ETJ.

DRAFT

**WATER AND WASTEWATER
SERVICE EXTENSION
REQUEST FOR
CONSIDERATION**

Name: Bridgeview Terrace

Service Requested: Wastewater

SER-2692

Date Received: 07/31/2007

Location: 4170 WESTLAKE DR AUSTIN TX 78746- BRIDGEVIEW TERRACE

Acres: 4.74

Land Use: SINGLE FAMILY

Alt. Utility Service or S.E.R. Number: Loop 360 Water Service

Quand(s): F28

DDZ: NO

Drainage Basin: LAKE AUSTIN

Pressure Zone: NWA28

DWPZ: YES

Flow: (Estimated Peak Wet Weather Flow, Gallons per Minute) 7 GPM

% Within City Limits: 28

Cost Participation: \$0.00

% Within Limited Purpose: 0

Description of Improvements:

Applicant will construct approximately 400 feet of 8-inch gravity wastewater line from the existing 8-inch gravity wastewater line (Project 99-0783) in WESTLAKE DR west of the subject tract, east within a Public Utility Easement through the subject tract to the western property line of Lot 8A of the subject tract.

NOTE: Wastewater Capacity Requirements based on Engineering Calculations received from Carl Conley, P.E. on 07/31/2007.

Completion and acceptance of the improvements described above and the conditions set forth below:

- 1) Construction of all Service Extensions is subject to all environmental and planning ordinances.
- 2) Service Extensions are subject to the guidelines established in the Land Development Code, Section 25-9, Water and Wastewater Utility Service.
- 3) The level of service approved by this document does not imply commitment for land use.
- 4) The proposed offsite wastewater improvements will be dedicated to The City of Austin for ownership, operation, and maintenance.
- 5) The proposed offsite wastewater improvements must be placed in the Public Right-of-Way or Approved Utility Easements. Utility Easements must be in place prior to Construction Plan Approval.
- 6) The approved Service Extension will automatically expire 120 days after date of approval unless a development application has been accepted by the Watershed Protection and Development Review Department. The Service Extension expires on the date the development expires, or if approved, on the date the development application approval expires.
- 7) Approval by the City Council will be required based on City of Austin Ordinance § 25-9-34.

Prepared By Utility Development Services Date

Division Manager, Utility Development Services Date

Division Manager, Systems Planning Date

Assistant Director, Water Resources Management Date

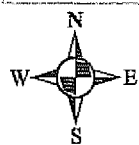
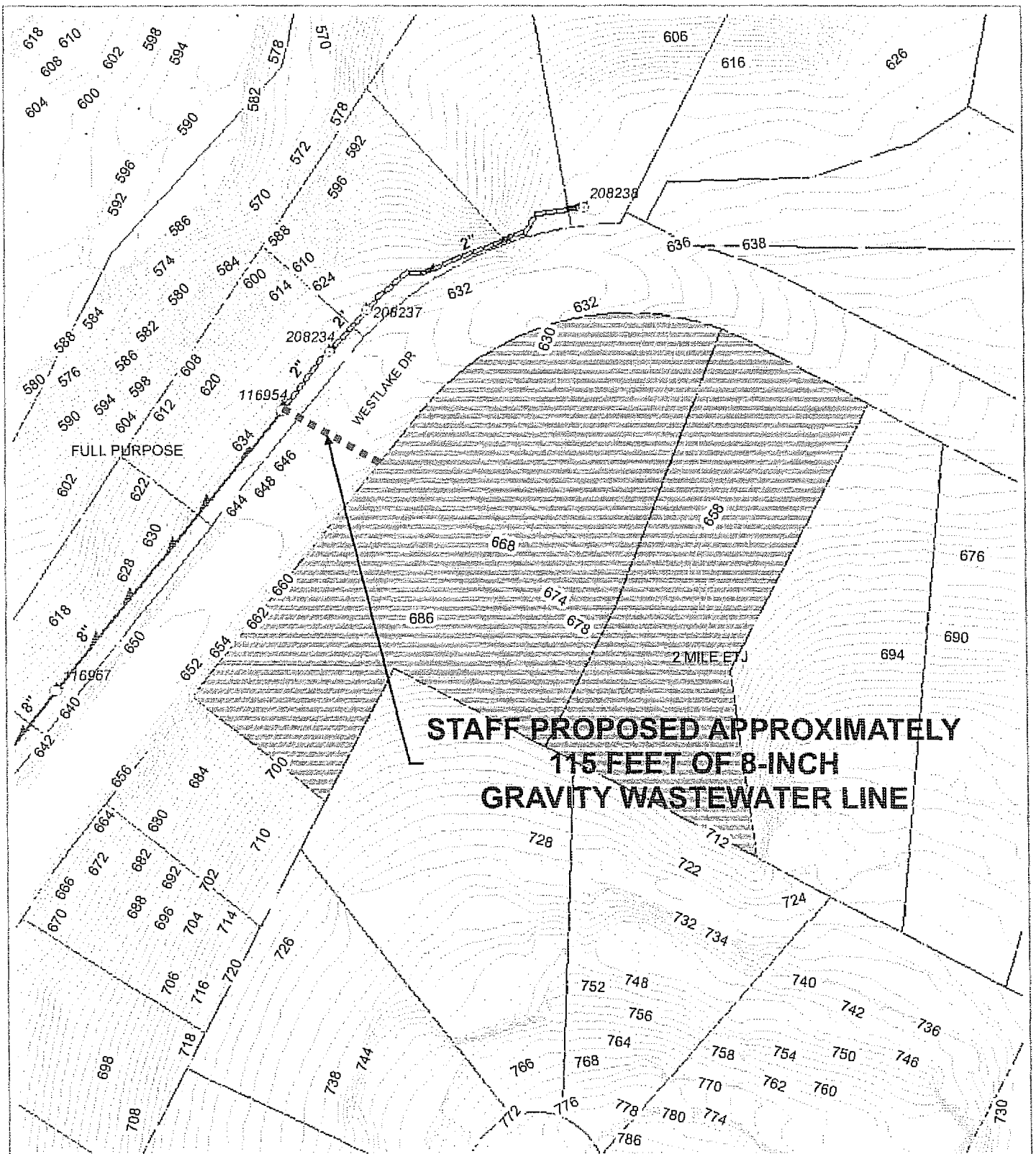
Division Manager, Facility Engineering Date

Assistant Director, Engineering Program Date

Watershed Protection Date

Director, Austin Water Utility Date

Hansen Service Request Number 317612



150 75 0 150 Feet



Subject Tract

W.W. S.E.R. Name: Bridgeview Terrace
W.W. S.E.R. Number: 2692

Full-purpose City Limit
2 MILE ETJ



ENVIRONMENTAL BOARD MOTION 110707-C3

Date: November 07, 2007

Subject: Bridgeview Terrace - Service Extension Request #2692

Motioned By: Dave Anderson, P. E.

Seconded by: Phil Moncada

Recommendation

The Environmental Board recommends that the City Council grant Service Extension Request #2692 (Wastewater) for Bridgeview Terrace.

Staff Conditions

None.

Board Conditions

None.

Rationale

More development is not expected as a result of this service extension request, and the SER promotes improved water quality due to centralized service.

Vote 6-0-0-1

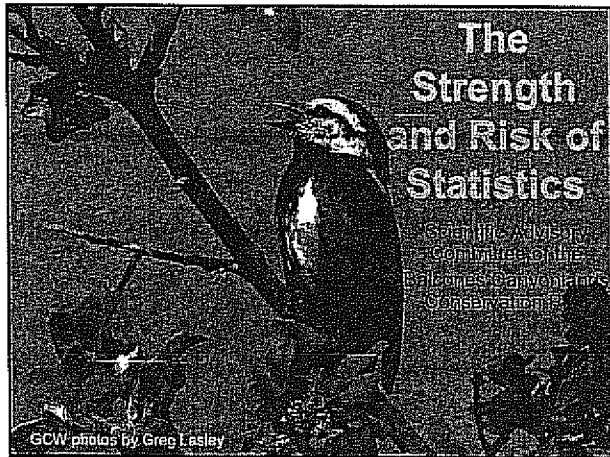
For: Anderson, Maxwell, Moncada, Neely, Dupnik, and Beall.

Abstain:

Absent: Ahart

Approved By:

Dave Anderson P.E., CFM
Environmental Board Chair



Process of Statistical Hypothesis Testing

- Develop hypothesis
- Create opposite of hypothesis as "Null" hypothesis
- Conduct Statistical Test
- 95% chance of inaccurate Null = "statistical significance" = reject Null
- Below 95% confidence, cannot reject the Null, but this does not mean it is accurate

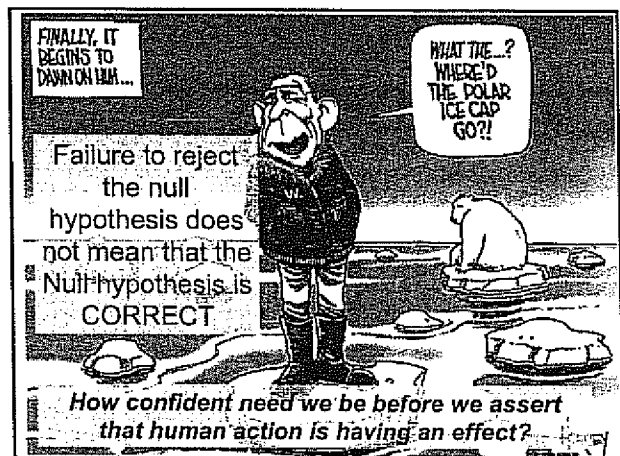
The Risk of Statistics

Falsely accepting a Null hypothesis

Let's say we want to statistically test if human actions are leading to climate change...



- Hypothesis: Humans are affecting climate change.
- Null hypothesis: Human actions are having no effect on climate change.



The Risk of Statistics

Falsely accepting a Null hypothesis

Let's say we want to statistically test if human recreational activity and warbler populations can coexist

- Hypothesis: GCW are impacted by human recreation
- Null hypothesis: GCW are not impacted by human recreation



How To Measure Impact?

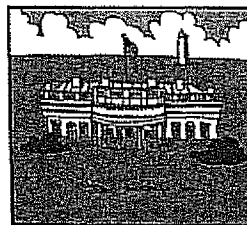
- Population estimates?
- Reproductive success?
- Flushing?
- Over what time period?

The Result



No "statistical significance," does not necessarily mean that there is no effect. It could mean recreation and Warblers can coexist, or that we lack the statistical power to establish the effect conclusively.

Individuals demanding increased access have stated that "If an effect on population cannot be measured with statistical significance, it is not significant."



The President's indifference to global warming was starting to show.

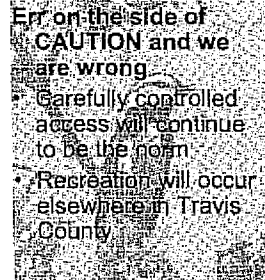
This is likely NOT true for the BCP.

BCP Facts

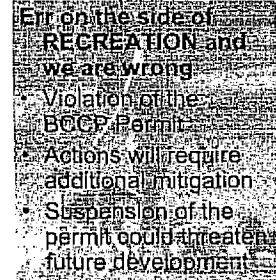


- BCP mitigation for development in Travis County
- BCP represents minimum size needed for mitigation
- BCP still incomplete
- Adverse effects within the preserve would have to be mitigated

Consequences



- Err on the side of CAUTION and we are wrong**
- Carefully controlled access will continue to be the norm
 - Recreation will occur elsewhere in Travis County



- Err on the side of RECREATION and we are wrong**
- Violation of the BCCP Permit
 - Actions will require additional mitigation
 - Suspension of the permit could threaten future development

Consequences



Access in the "off season" also has adverse effects

- Adversely affect habitat
- Increased erosion, soil loss, sedimentation
- Increased oak wilt risk
- Increased fire risk
- Difficult to restrict access during breeding

We do need better information

- Without better data, we must err on the side of caution
- Existing data needs to be analyzed
- Test "no effect of recreation" using a paired test OFF of BCP lands



Recommendations

- Complete BCR preserve acquisition
- Complete paired studies documenting effects on populations and nesting success
- Mitigate any adverse effects of recreation in advance
- Allow for additional recreational access in appropriate areas

City of Austin Environmental Board Resolution on BCCP EB110707-D2

WHEREAS the BCCP was formed as a community compact with the U.S. Fish and Wildlife and the City of Austin, Travis County, Lower Colorado River Authority, the Nature Conservancy of Texas and the Travis Audubon Society that allows public use as long as the use is within well managed and monitored plans that protect the species covered by the plan.

WHEREAS according to the USFWS IN 1996, The BCP Preserve System is to be managed to permanently conserve and facilitate the recovery of the population of target endangered species inhabiting western Travis County. This priority objective will govern preserve management activities to improve target species habitat, while protecting preserves against degradation caused by urbanization of surrounding lands and increase demand for recreational usage within preserve lands.

WHEREAS the biologists, after reductions in necessary acreage to ensure continued survival of the Black Capped Vireo and the Golden Cheeked Warbler, decided that 30,428 acres and 62 important cave features was the minimum amount of habitat needed just to ensure the continued survival of the Black Capped Vireo and the Golden Cheeked Warbler

WHEREAS the BCCP terms and conditions require that a minimum of 30,428 acres of endangered bird habitat and 62 important cave features be protected in a system of preserves

WHEREAS the BCP permit is mitigation for the recovery of target endangered species that allows for economic growth and development in Travis County

WHEREAS the BCP has not yet achieved the 30,428 necessary acres and is 2,000 acres short

WHEREAS the BCP is managed to conserve all of our native wildlife, to protect and restore Endangered species, and to protect source water areas for Austin's water supply, as well as a host of ecological services to our community such as air and water quality benefits.

WHEREAS adverse effects to the golden-checked warbler are already occurring with the incidental take of approximately 26,000 acres of warbler habitat within the permit area, 74% of the available habitat. Any additional impacts will exceed the amount of take authorized.

WHEREAS, according to the USFWS IN 1996, the BCP Preserve System is to be managed to improve target species habitat while protecting Preserves against degradation caused by urbanization of surrounding lands and increase demand for recreational usage within preserve lands; and

WHEREAS the Fish and Wildlife position before a large stakeholder group nearly a decade ago was that the preserve was purchased as the first step to recover specific endangered species population known to be incompatible with mountain biking and/or urbanization

WHEREAS seven parkland tracts in BCCP allow the full range of recreational activities that existed at the 1992 level.

WHEREAS the Environmental Board supports recreational activity in Travis County

WHEREAS increased trail usage and new trails in the preserve has been shown to increase changes in plant communities that result in habitat fragmentation, trampling, soil compaction, erosion, introduction of exotics, increased spread of oak wilt, potential wildfire ignition sources, and increased nest predation. Such activities, over time, could result in a decline of the species, which could result in risking the permit.

WHEREAS, should the BCP fail to preserve the species and the permit is revoked, the site development permitting process is likely to return to vast portions of western Travis County; THEREFORE

NOW, BE IT RESOLVED BY THE CITY OF AUSTIN ENVIRONMENTAL BOARD, that the Board does not support the policy of allowing additional recreational uses on preserve land until the full 30,428 acres that are needed to ensure the continued survival of the Black Capped Vireo and the Golden Cheeked Warbler have been acquired; and

BE IT FURTHER RESOLVED THAT the Board does support additional compatible uses such as service projects on the preserve.

BE IT FURTHER RESOLVED THAT upon completion of the Preserve system, the Board does not support additional recreational non-nesting season use of preserve lands, as the result could be a decline of the species that could result in a violation of the permit..

BE IT FURTHER RESOLVED that the Environmental Board does not support additional unrestricted public access after preserve acquisition is complete, including non-nesting season public access, as this poses a risk of violating the federal permit.

ADOPTED: November 7, 2007

ATTEST: _____

David J. Anderson, PE, CFM
Environmental Board Chair

DRAFT

Balcones Canyonlands Preserve Land Management Plan 2007 Revisions

City of Austin
Water and Wastewater
Commission
September 26, 2007

"The BCP Preserve System is to be managed to permanently conserve and facilitate recovery of the populations of target endangered species inhabiting western Travis County. This priority objective will govern preserve management activities to improve target species habitat, while protecting preserves against degradation caused by urbanization of surrounding lands and increased demand for recreation usage within preserve lands."

•USFWS: Habitat Conservation Plan and Final
Environmental Impact Statement, 1996

The Balcones Canyonlands Conservation Plan

•The BCCP was the very first regional multi-species USFWS Habitat Conservation Plan in the nation, and was issued on May 2, 1996.

•The BCCP exists to balance our communities needs for economic growth and development with protection of our unique and irreplaceable native wildlife.

•The BCCP terms and conditions require that a minimum of 30,428 acres of endangered bird habitat and 62 important cave features be protected in a system of preserves known as the Balcones Canyonlands Preserve.

The Balcones Canyonlands Preserve

•The BCP today consists of 27,916 acres of endangered bird habitat and 44 protected karst features.

•This represents 92 % of the land and 74% of the cave protections required under the
•Federal permit.

•The BCP is one of the largest urban preserve systems in the entire country.

•The BCP is managed to conserve all of our native wildlife, to protect and recover Endangered species, and to protect source water areas for Austin's water supply.

•By setting aside and managing wildlife habitat, the BCP also provides a host of ecological services to our community such as air and water quality benefits.

The LMP to Date

- From 1996 to 1999, BCP tracts were managed under the "Land Management Plans and Guidelines" found in the Habitat Conservation Plan.
- Partners were directed to create a comprehensive Plan to guide management of the Preserve.
- The first BCP LMP was submitted to USFWS in 1999 after 3 years of work by the BCP Partners to craft a consensus based document.
- BCP Partners: City of Austin, Travis County, Lower Colorado River Authority, The Nature Conservancy of Texas, and the Travis Audubon Society.

The LMP to Date

(continued)

- USFWS attended and advised the Partners throughout the creation of the original Land Management Plan.
- The document was approved by the Coordinating Committee in 1999, and was approved with USFWS comments after a one-year review period.
- USFWS requested that the BCP Partners incorporate their comments and suggestions into the next revision of the Plan (current draft).
- Work began on the current LMP document in August 2004.
- BCP Partners have been revising and updating the entire document to incorporate new science, best management practices and describe lands newly incorporated into the Preserve.
- The BCP Partners consider the LMP a "Living Document" intended to be regularly updated through a process of adaptive management.

Organization of the LMP document

*Extensive rewriting and the addition of significant new material made tracking changes within the document impractical. Printed copies of the approved 1999 plan are available for review. Three volumes comprising 1,000 pages.

*The herein approach follows the outline of the existing LMP:

- *Tier I: Overview
- *Tier II: Management Handbook
- *Tier II.B: Plan Administration
- *Tier II.C: Macro-site Descriptions
- *Tier III: Tract Management Plans

LMP Revision Timeline

- The Land Management Plan Working Group was formed in August of 2004.
- Staff worked to revise and update the Plan for 15 months, incorporating USFWS comments, new science, best management practices, and describing lands newly incorporated into the Preserve.
- A Draft Plan was presented to the Citizens and Scientific Advisory Committees and the Public in early November 2005.



Balcones Canyonlands Preserve (BCP) Citizens Advisory Committee Web site

Citizens Advisory Committee Web site

Public Hearings scheduled for Travis County Commissioners Court (Nov 6 at 9 am) and Austin City Council (Nov 8 at 6 pm) before approval of the proposed Land Management Plan for the BCCP.

If you would like to review public comments submitted last year and city/county staff responses, please view [Appendix C of Tier 1 here](#).

- 8/17/07 Update: The revised version of the Land Management Plan has been [posted here](#) - all files are in Adobe Acrobat Format. Here is the [opening presentation](#) that was done by Kevin Connally of Travis Country BCCP staff.

The BCCP Coordinating Committee (Mayor Will Wynn representing the city and Commissioner Gerald Daugherty representing Travis County) agreed to obtain approval through the Austin City Council and the Travis County Commissioners Court in the next 90 days before returning as the coordinating committee to approve the Land Management Plan. (The plan must be renewed every five years.) For the many people who offered comments about public access and staff responses to the public comments submitted, please download the [Tier 1 Overview Document](#) and scroll to Appendix C, which is the bulk of the document.

Also, review the revised Tier II [Chapter 12 - Public Access](#) document as well as any individual [Tract documents](#) in the Tier II subsection.

More info will be provided shortly.

Previous Updates prior to August 2007:

[Recommendations](#) from the Citizens Advisory Committee for Draft Land Managements Plans / BCCP Policies (6/12/06)

For meeting minutes, committee recommendations, public comments and more, visit our [What's New](#) page.

The Citizens Advisory Committee serves the Balcones Canyonlands Conservation Plan (BCCP) Coordinating Committee by providing review and oversight of implementation of permit terms and conditions, by studying and making recommendations on issues of special concern to the Committee, and by providing a forum for public input. The Citizens Advisory Committee is composed of eleven members that represent a broad range of interests throughout the area covered by BCCP. Citizen Advisory Committee members are nominated by the BCCP Permit Holders or by consensus of the managing partners and are appointed by the BCCP Coordinating Committee. [Click here](#) to view a list of current BCCP Citizens Advisory Committee members.

To learn more about the Balcones Canyonlands Preserve and the revised Land Management Plans, please look at our [At a Glance](#) page or view our [Frequently Asked Questions \(FAQ\)](#).

To view all public comments collected during the public comment period from November 2005

through March 2006, please visit our [What's New](#) page.

You can also visit the [Travis County](#) or [City of Austin](#) Balcones Canyonlands Preserve websites for a more detailed overview of the Preserve.

The public comment period will run 120 days from November 10, 2005 to March 10, 2006. The public comment period began with a public meeting on November 10, 2005 from 6:30 pm to 8:30 pm at 505 Barton Springs Road, Third Floor Training Room # 325. See the [press release](#).

Updated Feb 1, 2006

Questions, comments, concerns? Please contact the [webmaster](#).

[HOME](#) | [BCCP At A Glance](#) | [FAQ](#) | [Download Documents](#) | [Submit Comments](#) | [BCP Map](#) | [BCP Citizens Advisory Committee](#) | [Back to top of this page](#)

3 3 0 5

Public Review and Comment Process

Updates on the Land Management Plan revisions were provided at every Coordinating Committee, Scientific Advisory Committee and Citizens Advisory Committee meeting. Since the inception of the Land Management Plan Working Group there have been 26 meetings where public comment could be received.

Citizens' Comments were recorded at each of these meetings and incorporated into the record.

A website was created in November of 2005 with the online text of the draft Plan. Providing and opportunity for citizens to submit their comments directly to the Advisory Committees.

Public notices were placed in the Austin American Statesman, the Austin Chronicle, on the City of Austin and the Travis County websites, and in other widely available media outlets.

The Citizens Advisory Committee held two public hearings over the course of a four month public review and comment period.

Print and digital copies of the draft Plan were provided at the Austin History Center, the Austin Central Library, and at various copy shops throughout the community.

Public comments were also received via postal service and e-mail.

Advisory Committee Review and Comment Process

The BCCP Citizens and Scientific Advisory Committees were presented the draft plan in November of 2005.

Over the course of nine months, the Committees convened to review and discuss the draft plan both independently and in a joint meeting.

The Advisory Committees had full access to all public comments received during the public review period.

The Scientific Advisory Committee invited comments from researchers and recognized experts in endangered species management from across the country.

The Citizens and Scientific Advisory Committee each submitted their recommendations to the Coordination Committee on July 24, 2006.

Land Management Plan Working Group Review

The Land Management Plan Working Group (representatives from City of Austin, Travis County and LCRA) reviewed the comments received from each of the Advisory Committees and the public for compliance with the BCCP permit.

The LMPWG worked to incorporate changes to the plan that met the terms and conditions of the federal permit based upon the comments received.

Comments were then sorted by topic and responses addressing the most widely received concerns were drafted by the LMPWG.

The full text of all comments received, as well as the recommendations of the Citizens and Scientific Advisory Committees and the LMPWG responses are found in Tier I Appendix C.

The Land Management Plan Today

The entire text of the Land Management Plan and the 1996 Habitat Conservation Plan/Final Environmental Impact Statement will be available on the BCCP Citizens Advisory Committee's website:

www.BalconesCanyonlands.org

Links to the Citizen Advisory Committee website are available on the Travis County website:

www.Co.Travis.TX.US

Additional copies are available at the City of Austin's Faulk Central Library and the Austin History Center.

Changes from the 1999 Plan

- Incorporates USFWS comments and suggestions
 - Clarifications of regulatory information
 - Clarification of regulatory expectations
- Addresses new biological and ecological data resulting from scientific research and practical experience gained from managing the Preserve
 - Changes in species taxonomy
 - New information on species meta-populations and their dynamics
- Includes information provided by scientists and peer reviewed published research
 - New information about how protected species are affected by threats
 - New land management practices and monitoring protocols

Public Access Today

- The City of Austin and Travis County currently manage over 2/3 of all lands that make up the BCP, and have always managed portions of the Preserve for year-round managed public access (including Travis County's Hamilton Pool Preserve, the City of Austin's Emma Long Park, Wild Basin Wilderness Preserve, and Westcave Preserve)
- 25% of the City's BCP is available for unrestricted access on sites jointly managed by BCP and the Parks and Recreation department
 - This includes more than 30 miles of authorized public trails
 - The remaining preserve acreage is available for structured educational access guided by staff or trained volunteer interpretive guides
 - In the last year this includes:
 - Fifty volunteer and educational events
 - Reaching 2349 citizens
 - Includes 1278 hours of citizen volunteer service to BCP (~1 productive FTE addition to staff)

Public Access Today (continued)

- BCP staff has always endeavored to provide preserve appropriate public access in a manner consistent with the terms of the permit and within staff and budget constraints
 - No publicly dedicated trail within the BCP has ever been closed or had grandfathered uses removed
 - Bull Creek preserve (Forest Ridge) seasonal Hiking permits - 672 since 1999
 - The 2007 BCP Hike and Lecture Series that provides monthly opportunities for the public to experience and learn about the preserve
 - Interpretive hikes for organized groups
 - Volunteer activities that provide wildland experiences in remote areas such as:
 - Invasive species eradication
 - Monitoring of plants and animals Plant and seed collecting
 - Habitat restoration projects
 - Guiding others on interpretive hikes

Public Access Process 2007 REVISED PLANS

- Tier IIA Chapter VII creates a "Public Access Process" that allows for activities within the Preserve that are managed, structured, monitored and mitigated in accordance with the terms and conditions of the federal permit
- The "Public Access Process" encourages interested parties and user groups to work with staff to identify regulatory issues and agency constraints and provides a clear pathway to achieve a "yes" to their requests for additional access
- The "Public Access Process" applies to City of Austin and Travis County managed properties. For access issues on lands managed by other BCP Partners, interested parties should contact these organizations directly

Next Steps

- BCCP Secretary Certification that the Land Management Plan complies with the terms and conditions of the federal permit
- Additional public input during Coordinating Committee meetings in October and November 2007
- Public hearing on the plan conducted by Austin City Council and Travis County Commissioner's Court
- Approval by the BCCP Coordinating Committee
- Submittal to USFWS for final approval

For more information:

Austin Water Utility Wildlands Conservation Division:

- Daryl Slusher, Assistant Director, Conservation Services – 972-0218 daryl.slusher@ci.austin.tx.us
- Willy Conrad, Division Manager – 263-6430 willy.conrad@ci.austin.tx.us
- Scott Rowin, BCCP Program Manager (effective 10/1/07) – 263-6431 scott.rowin@ci.austin.tx.us
- Gail McGlammery, Conservation Program Coordinator (outreach) – 263-6437 gail.mcgammery@ci.austin.tx.us



ENVIRONMENTAL BOARD MOTION -110707-D2

Date: November 07, 2007

Subject: Balcones Canyonlands Conservation Program Land Management Plan

Motioned By: Mary Ann Neely

Seconded By: Dr. Mary Gay Maxwell

Recommendation

The Environmental Board recommends acceptance of the proposed revisions to the Balcones Canyonlands Conservation Program Land Management Plan, and offers the attached resolution in support of this recommendation.

Staff Conditions

Not Applicable.

Rationale

Not Applicable.

Vote 6-0-0-1

For: Anderson, Maxwell, Dupnik, Neely, Moncada, and Beall.

Against:

Abstain:

Absent: Ahart

Approved By:

Dave Anderson P.E., CFM, Chair

City of Austin Environmental Board Resolution on BCCP EB110707-D2

WHEREAS the BCCP was formed as a community compact with the U.S. Fish and Wildlife and the City of Austin, Travis County, Lower Colorado River Authority, the Nature Conservancy of Texas and the Travis Audubon Society that allows public use as long as the use is within well managed and monitored plans that protect the species covered by the plan.

WHEREAS according to the USFWS IN 1996, the BCP Preserve System is to be managed to permanently conserve and facilitate the recovery of the population of target endangered species inhabiting western Travis County. This priority objective will govern preserve management activities to improve target species habitat, while protecting preserves against degradation caused by urbanization of surrounding lands and increase demand for recreational usage within preserve lands.

WHEREAS the biologists, after reductions in necessary acreage to ensure continued survival of the Black Capped Vireo and the Golden Cheeked Warbler, decided that 30,428 acres and 62 important cave features was the minimum amount of habitat needed just to ensure the continued survival of the Black Capped Vireo and the Golden Cheeked Warbler

WHEREAS the BCCP terms and conditions require that a minimum of 30,428 acres of endangered bird habitat and 62 important cave features be protected in a system of preserves

WHEREAS the BCP permit is mitigation for the recovery of target endangered species that allows for economic growth and development in Travis County

WHEREAS the BCP has not yet achieved the 30,428 necessary acres and is 2,000 acres short

WHEREAS the BCP is managed to conserve all of our native wildlife, to protect and restore Endangered species, and to protect source water areas for Austin's water supply, as well as a host of ecological services to our community such as air and water quality benefits.

WHEREAS adverse effects to the golden-checked warbler are already occurring with the incidental take of approximately 26,000 acres of warbler habitat within the permit area, 74% of the available habitat. Any additional impacts will exceed the amount of take authorized.

WHEREAS, according to the USFWS IN 1996, the BCP Preserve System is to be managed to improve target species habitat while protecting Preserves against degradation caused by urbanization of surrounding lands and increase demand for recreational usage within preserve lands; and

WHEREAS the Fish and Wildlife position before a large stakeholder group nearly a decade ago was that the preserve was purchased as the first step to recover specific endangered species population known to be incompatible with mountain biking and/or urbanization

WHEREAS the Environmental Board supports recreational activity in Travis County and seven parkland tracts in BCCP allow the full range of recreational activities that existed at the 1992 level.

WHEREAS increased trail usage and new trails in the preserve has been shown to increase changes in plant communities that result in habitat fragmentation, trampling, soil compaction, erosion, introduction of exotics, increased spread of oak wilt, potential wildfire ignition sources, and increased nest predation. Such activities, over time, could result in a decline of the species, which could result in risking the permit (see attached City of Austin BCP Biologist statement from 11/07/07 meeting and the attached presentation from Dr. Steve Windhager with the Ladybird Johnson Wildflower Research Center).

WHEREAS, should the BCP fail to preserve the species and the permit is revoked, the site development permitting process is likely to return to vast portions of western Travis County; THEREFORE

NOW, BE IT RESOLVED BY THE CITY OF AUSTIN ENVIRONMENTAL BOARD, that the Board recommends acceptance of revision to the BCCP Land Management Plan prepared by Staff; and

BE IT FURTHER RESOLVES THAT the Board does not support the policy of allowing additional recreational uses on preserve land until the full 30,428 acres that are needed to ensure the continued survival of the Black Capped Vireo and the Golden Cheeked Warbler have been acquired; and

BE IT FURTHER RESOLVED THAT the Board does support additional compatible uses such as service projects and uses that would optimize educational opportunities by allowing managed access to the Preserve lands in a manner that will not cause undue risk to the protected species; and

BE IT FURTHER RESOLVED THAT upon completion of the Preserve system, the Board does not support additional recreational non-nesting season use of preserve lands, as the result could be a decline of the species that could result in a violation of the permit until the science shows us that additional access does not negatively impact the protected species.

ADOPTED: November 7, 2007

ATTEST:



PE.

David J. Anderson, PE, CFM
Environmental Board Chair

October 19, 2007

Dear Barton Springs Swimmers and Stakeholders,

As you may be aware, the Barton Springs Pool Master Plan is well underway. After a great deal of planning, the city and consultant group are now ready to proceed with the much-anticipated implementation of the short-term goals. The process leading to this point has been exciting, filled with both challenges and triumphs. However, as the city and community continue to work together, it will surely be something for which we can all look back and be proud.

Now that we are at this important stage in the process, the Parks and Recreation Department feels it is appropriate to provide you with a brief update to ensure everyone is kept well-informed and on the same page. The purpose of this letter is to elaborate on some recent developments as well as discuss the goals for the future.

To provide a little background, funding for the Barton Springs Pool Master Plan was presented to the City Council on August 30, 2007 and passed on September 10, 2007. This funding was first made available upon the passing of the city's budget during the first week of October 2007.

At this time, the consultants from Limbacher & Godfrey Architects are completing the draft Master Plan based on the input they have received through numerous public meetings. In addition, staff from the Parks and Recreation Department (PARD) and the Watershed Protection & Development Review Department (WPDR) are creating a timeline for all the short-term projects. Some of these projects, such as roof repair, may result in the temporary closure of the pool bathrooms. However, every attempt will be made to address these improvements during the spring cleaning when the pool is already closed to the public.

It is important to also note there are two projects that may take longer to complete than originally expected: the ADA trail improvements and dredging. The ADA improvement designs will undergo an additional public process that could take several months. In addition, the dredging request must undergo a lengthy permitting process to ensure proper compliance. The Parks and Recreation Department anticipates these items to be started by late 2008 or early 2009.

The draft Master Plan is expected to be complete by December 3, 2007, at which point it will be made available for public comment until January 11, 2008. A meeting will also be set during the week of January 21, 2008 to discuss the plan and allow the consultants to receive further feedback from the public.

Beginning in either February or March of 2008, the PARD, along with WPDR, will approach various Boards and Commissions for adoption of the draft Master Plan. The department will present to the Parks and Recreation Board, Environmental Board, and the Historic Landmark Commission. In addition, the Master Plan will be posted as an Item for Action at each of these meetings, allowing for further public comment. In late April or early May of 2008, the adopted plan will be posted for final action by the City Council.

As you can see, while a great deal of work has been put into this project, a great deal still remains to be done. However, we are excited and looking forward to the end result. Furthermore, we ask for your patience as we continue to move forward with this important public process. By taking careful time now, the city and community are demonstrating, in a joint effort, a firm commitment to making the Barton Springs Pool a place of marvel for generations to come.

Should you have any further questions, please feel free to contact me at 974-6714.

Sincerely,

Farhad Madani, Assistant Director
Austin Parks and Recreation Department

*replaces
previous letter
dated 10/19
see attached*



*Hand to
Board.
Via Email
11/7/2007*

MEMORANDUM

TO: Mayor and City Council

FROM: Warren W. Struss, Director
Parks and Recreation Department

DATE: November 6, 2007

SUBJECT: Barton Springs Pool Master Plan – Public Process Update

Please allow this memo to serve as an update on the Barton Springs Pool Master Plan as it pertains to the future public participation process and schedule. At this time, the consultants from Limbacher & Godfrey Architects are completing the draft Master Plan based on the input they have received through numerous public meetings. They are using this feedback and working with their respective sub-contractors to organize and assemble the information into a more easily understood format. The draft Master Plan is expected to be complete by December 15, 2007, at which point it will be made available for public comment through February 1, 2008. Comments can be submitted via mail or emailed to bspmasterplan@ci.austin.tx.us.

An initial meeting will be held on Wednesday, January 23, 2008 with the consultants, PARD and WPDR staff, and the stakeholders and swimmers that have been involved with the Master Plan process to discuss the draft and the comments received to date. A public meeting will then be set during the week of January 28, 2008 to discuss the plan and allow the consultants to receive further feedback from the public.

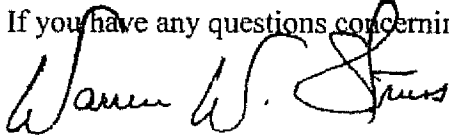
During the months of February and March 2008, city staff will approach the Parks and Recreation Board, Environmental Board, and Historic Landmark Commission for adoption of the draft Master Plan. This will be posted as an Item for Action at each of these meetings to ensure further public input opportunity. Upon the conclusion of these meetings, the consultants will finalize the draft to be presented to the City Council in May or June 2008 for final adoption.

In regards to the short-term project component of the Master Plan, for which funding was recently approved by City Council, I would like to provide you with the following update. Currently, staff from the Parks and Recreation Department (PARD) and the Watershed Protection & Development Review Department (WPDR) are working together to create a timeline and assigning these projects to the appropriate department. These too will undergo an extensive stakeholder and public input process. It is important to note that due to this additional

public input process and required permitting, some of the short-term projects may take longer to complete than originally expected.

Finally, the Parks and Recreation Department will brief the Land and Facilities Subcommittee on these important short-term projects on a monthly basis, providing an opportunity for public comment, until their completion.

If you have any questions concerning this matter, please contact me at 974-6716.

A handwritten signature in black ink, appearing to read "Warren W. Struss". The signature is fluid and cursive, with the first name "Warren" being the most prominent.

Warren W. Struss, CPRP
Director, Austin Parks and Recreation

C.C. Toby Hammett Futrell, City Manager
H.G. (Bert) Lumberras, Assistant City Manager