

Austin Bergstrom International Airport GateOne - CapacityPlus

Presented by
Siemens Industry, Inc.

Project overview



Turn-key solution for a arrivals only passengers terminal with an overall processing capacity of 440 Pax/h. The concept presents a modular building structure for 5 years operations that includes:

- HVAC, lighting, CCTV, FIDS, Communications, PA system and fire extinguishers
- Sanitary facilities and office space
- BHS reclaim carousels
- Customs Board Patrol and Federal Inspection Services counters

Terminal exterior design

**Modular
panel
installation**

**Easy to
assemble/
disassemble**

**Light weight
with reduced
impact on the
Apron**

**Project
according to
IBC
regulation**

**Comfort and
functionality**

- Anodized al. frame
- Elevated floor
- Acoustic insulation



Terminal – Key dimensions

Aluminum structure

- Width: 131,23 ft
- Length: 262,47 ft
- Side-height: 19,69 ft
- Center high: 25,33 ft
- Bay-distance: 16,40 ft
- Roof pitch: 5 °

Frame

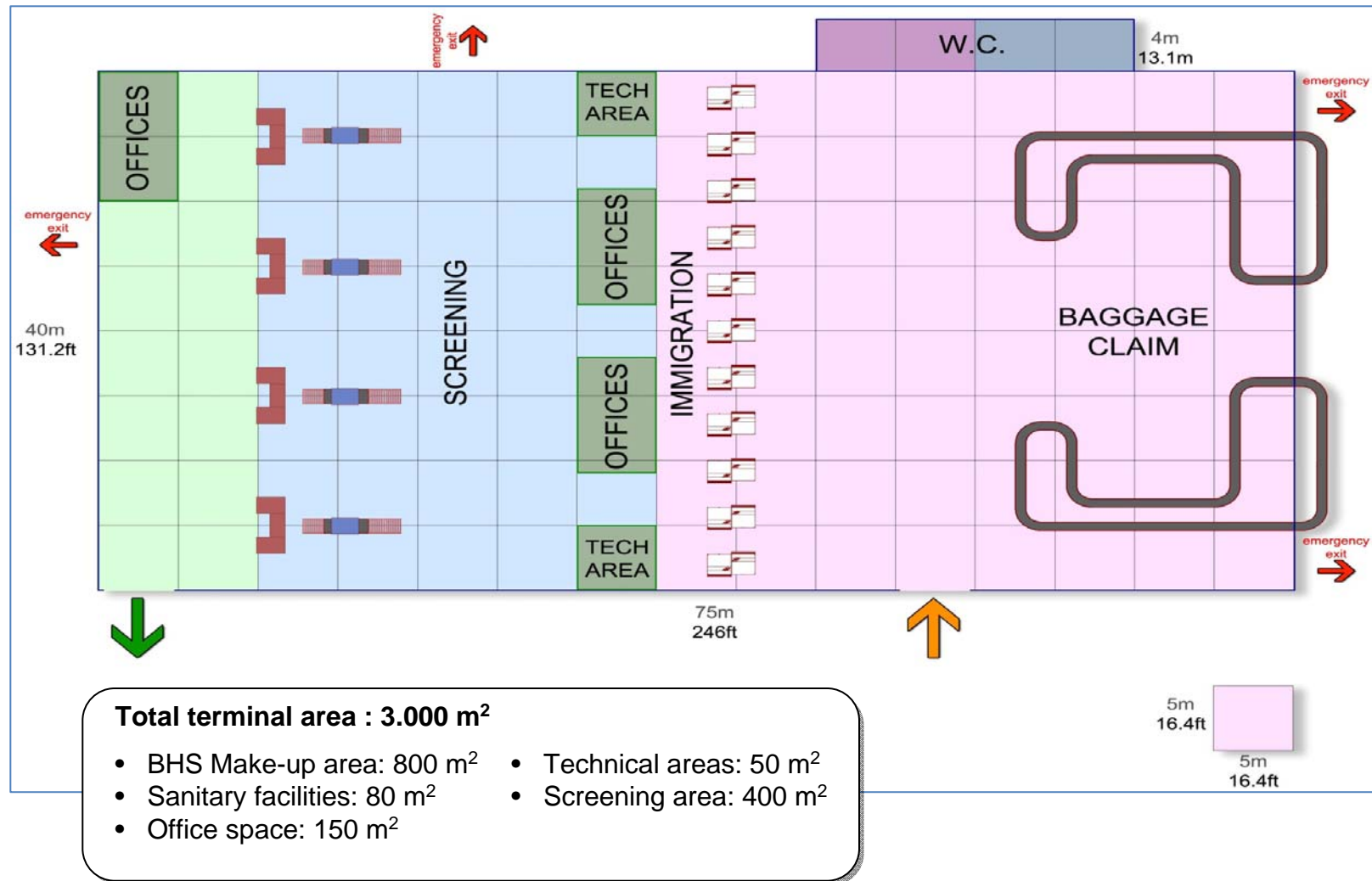
- Extruded anodized aluminum profiles

Cover

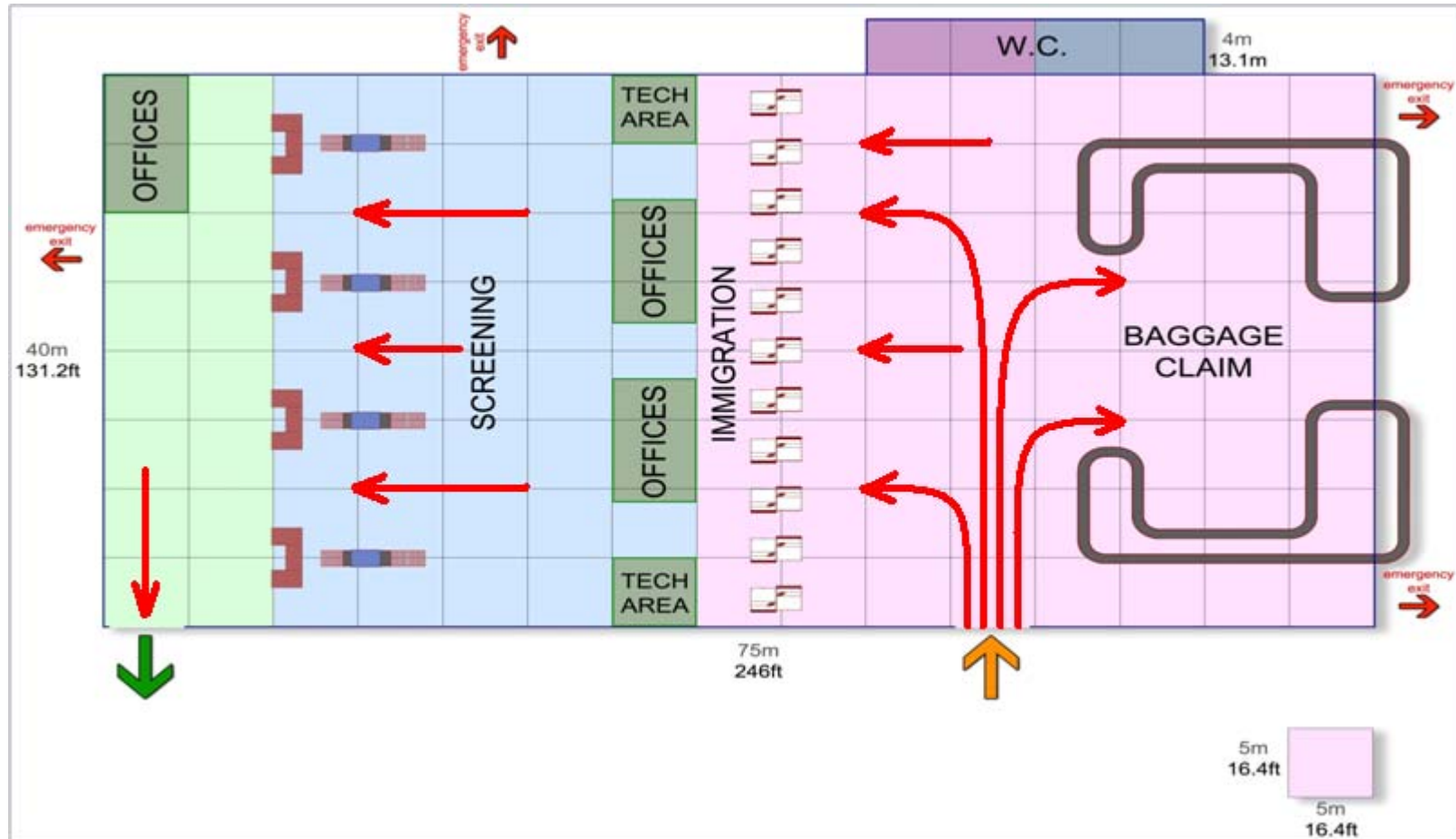
- PVC white



Terminal layout



Passenger flow



Project timeline

