

General Grounds Improvements for Barton Springs Pool

Austin, Texas

Urban Forestry Board Meeting

August 15, 2012



Larson Burns & Smith

Landscape Architects / Planners

Stansberry Engineering

Civil Engineers

Saenz + Bury

MEP Engineers

Frank Lam & Associates

Structural Engineers



Barton Springs Pool – General Grounds Improvements – Existing Aerial View



A. South Entry Gate

See Options below for South Entry Gate
New Ticket Booth
New Bike Parking

B. Combined ADA Path and Steps

Access to Pool Deck
5' Wide Warm Tone Concrete with Handrails
Accented with Limestone
Weathered Limestone Boulders along Path

C. South Woods

Plant Native Vegetation on Slopes and Drainage Way

D. Connection to Pool Deck

Access to Pool Deck and South Lawn Area

E. Overlook Area

Decomposed Granite (D.G.) Pathway to Overlook
Access to South Lawn Area
Access to Historic Monument
Seating Provided

F. New Ornamental Perimeter Fence

G. Relocated D. G. Trail

H. South Parking Lot

Accessible Parking Spaces Provided in Base Bid
Expanded Concrete Paved Lot Provided in Add Alternate Bid
Pathway Connection Provided to Robert E. Lee

I. Planting on Slope

Planted with Native Vegetation

J. Tree Court

A Portion of the Walkway is Elevated over Existing Pecan Tree Root Zone
Overlook Area
Informal Seating
Native Plantings

General Grounds Improvements

1. Tree Court
2. South Trail
3. Landscape
4. Perimeter Fencing
5. Electrical Upgrades and Water
6. South Parking Lot

August 13, 2012

Stansberry Engineering



Existing Aerial View



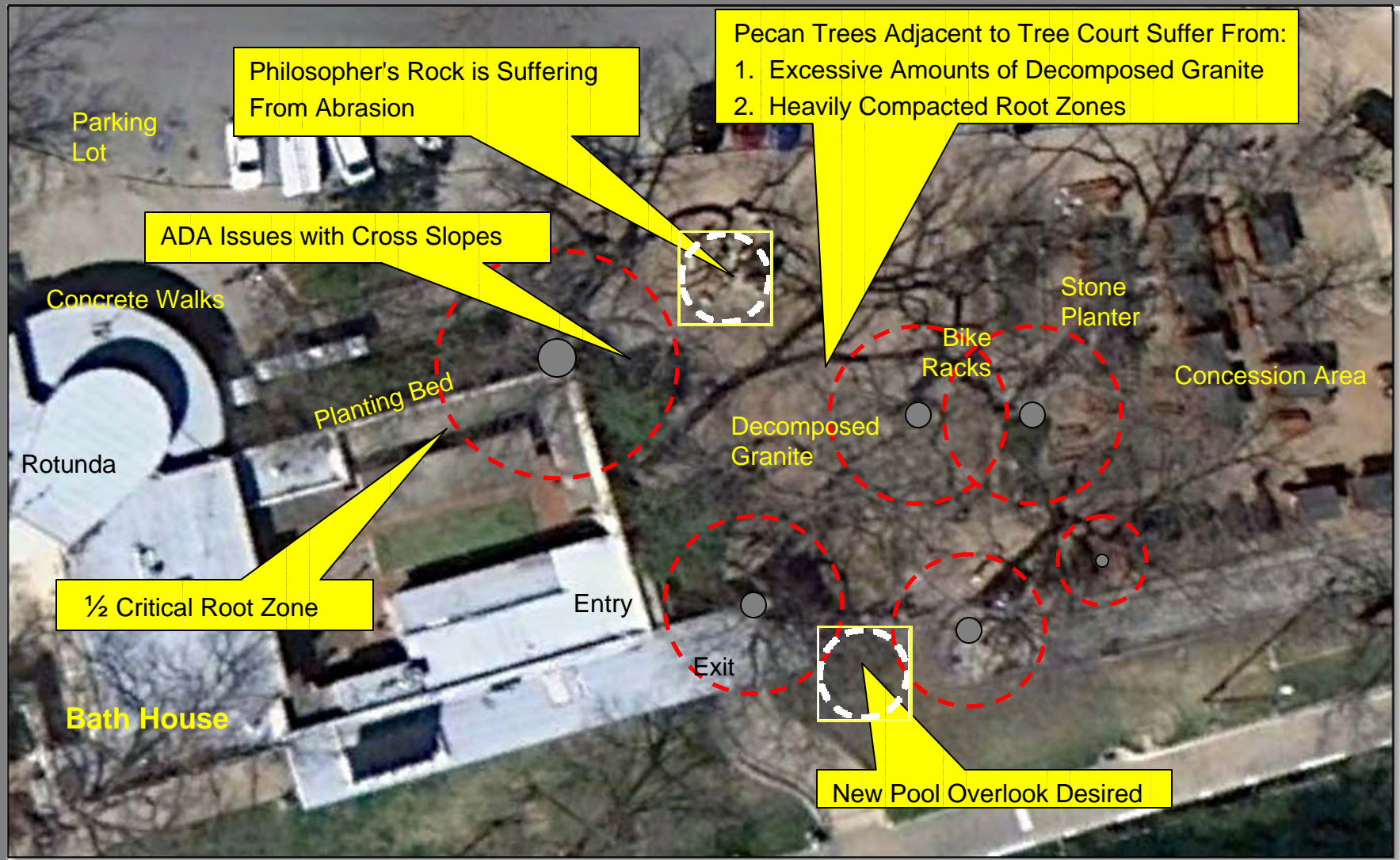
Barton Springs Pool

Tree Court Improvements



Stansberry Engineering

Existing Conditions Plan



Barton Springs Pool

Tree Court Improvements

LARSON
BURNS
SMITH

Stansberry Engineering

Tree Court Improvements



Arborist's Recommendations for Tree Care:

**From Don Gardner's Tree Care Option Letter dated March 27, 2011*

- ***Overall Objective - "Reinvigorate the Root System of the Pecan Trees"***

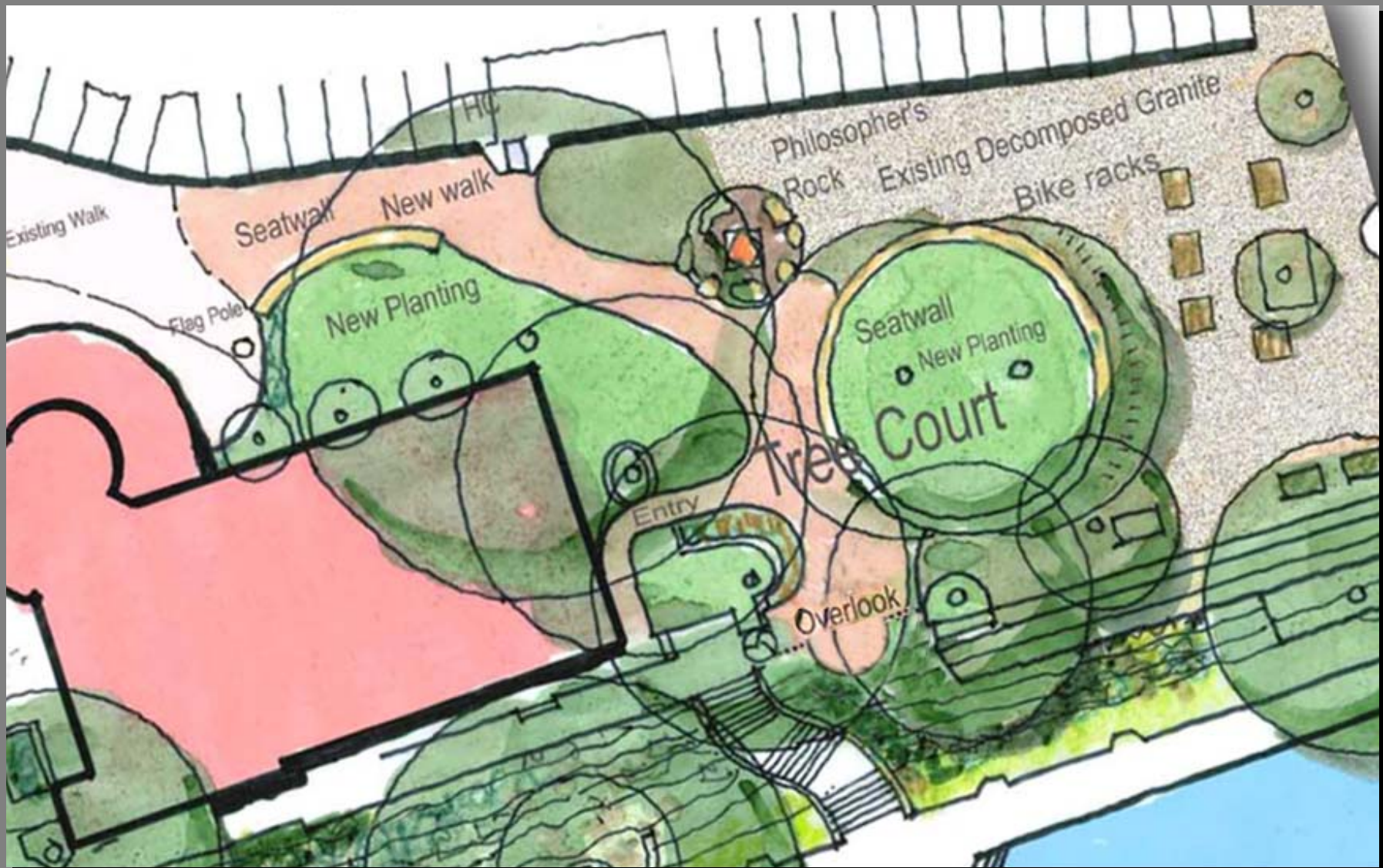
Recommended Treatments Include:

- 1. Remove the layer of Decomposed Granite (DG) approx. 12 inches deep***
- 2. Perform root invigoration work by using an air spade to loosen soil and adding compost***
- 3. Retain permanent planting and mulched areas as "dedicated tree root areas"***
- 4. These dedicated tree root areas should be a significant percentage (50%) of Tree Court area***
- 5. Dedicated tree root areas should be maintained regularly (compost, mulch and irrigation)***

Additional Recommendations Include:

- 1. Remove existing sidewalk that curves around the building at the entrance. The walk sits on one of the best areas to create root growth.***
- 2. Slightly elevate the new walk over the tree root area.***
- 3. Additional new trees (two to four) should be planted now for the future.***

Proposed Improvements Plan



Barton Springs Pool

Tree Court Improvements



Stansberry Engineering



Before

Barton Springs Pool

Tree Court Improvements

Stansberry Engineering

LARSON
BURNS
SMITH



After

©

Barton Springs Pool

Tree Court Improvements

Stansberry Engineering

LARSON
BURNS
SMITH



Plan Detail South Woods and South Lawn Area



South Entry Gate & Stone Columns



Proposed Ticket Booth



Section - South Woods ADA Trail Min. Width 5'-6"



10' Pedestrian Light and
Parking Lot Light



30' Pool Light
Mounted on Existing Pole

Barton Springs Pool South Entrance – South Lawn – ADA Ramp - Lighting

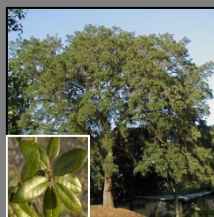
LARSON
BURNS
SMITH

Stansberry Engineering

Canopy and Ornamental Trees



Bald Cypress



Live Oak



Chinquapin Oak



Native Pecan



Cedar Elm



Yaupon Holly



Texas Redbud



Flame Sumac

Shrubs & Groundcovers



Big Muhly Grass



Red Yucca



Evergreen Sumac



Dwarf Yaupon Holly



Turk's Cap



Gulf Muhly Grass



Pride of Barbados



Cedar Sage



Bicolor Iris



Soft Leaf Yucca



Mountain Pea



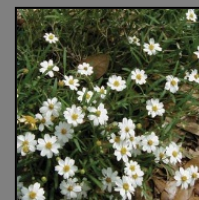
Silver Ponyfoot



Inland Sea Oats



Four Nerve Daisy



Blackfoot Daisy



Pink Skullcap

Turf Grass

St. Augustine
Cavalier Zoysia

Native Grass Seed Mix

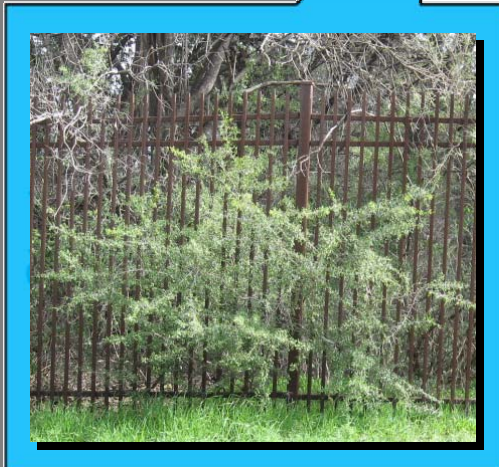
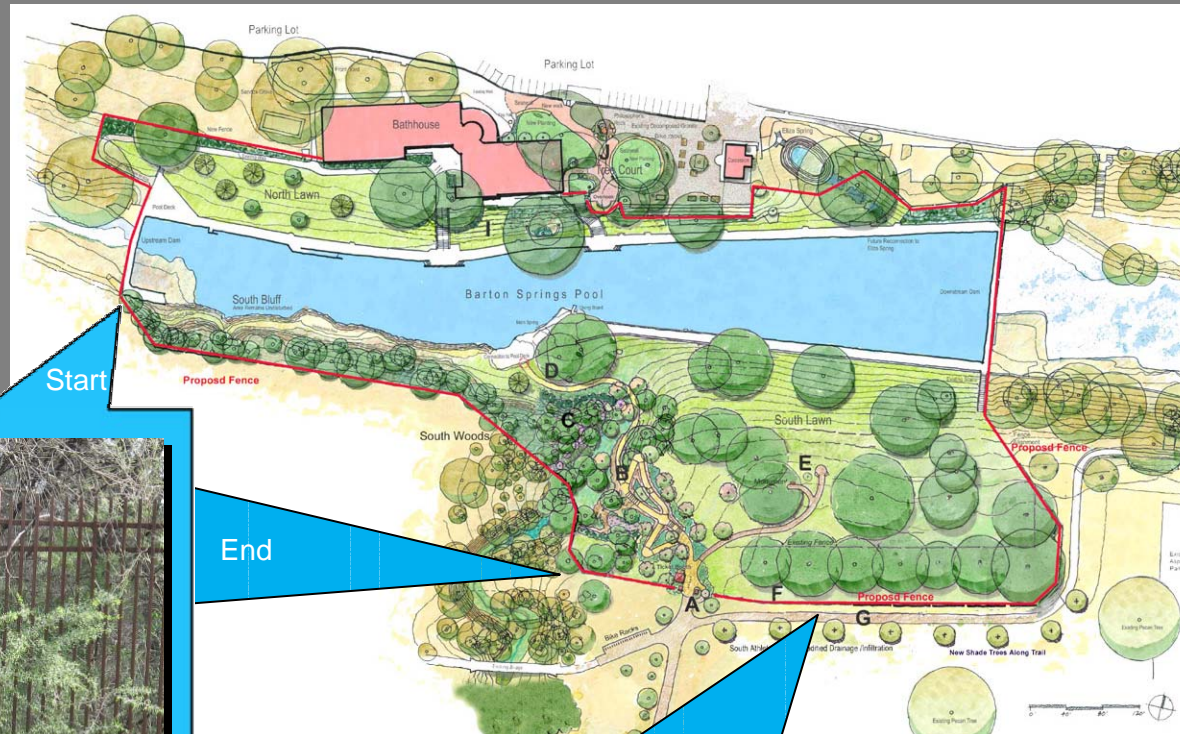
Buffalo Grass Eastern Grama Grass Green Sprangletop Prairie Wildrye Switchgrass Little Bluestem
Blue Grama Sideoats Grama Curly Mesquite Indiangrass Texas Cupgrass Sand Dropseed
Sand Lovegrass Big Bluestem Bushy Bluestem Cane Bluestem White Tridens Western Wheatgrass

Barton Springs Pool

Native & Adapted Plant Palette

LARSON
BURNS
SMITH

Stansberry Engineering



Proposed Weathered Steel
South Woods Only
Height - 8' ht.

Proposed Steel Mesh Fence
Height Varies:
4' ht. at Tree Court Overlook,
6' ht. All Remaining Areas.



Barton Springs Pool Proposed Perimeter Fence



A. South Entry Gate

See Options below for South Entry Gate
New Ticket Booth
New Bike Parking

B. Combined ADA Path and Steps

Access to Pool Deck
5' Wide Warm Tone Concrete with Handrails
Accented with Limestone
Weathered Limestone Boulders along Path

C. South Woods

Plant Native Vegetation on Slopes and Drainage Way

D. Connection to Pool Deck

Access to Pool Deck and South Lawn Area

E. Overlook Area

Decomposed Granite (D.G.) Pathway to Overlook
Access to South Lawn Area
Access to Historic Monument
Seating Provided

F. New Ornamental Perimeter Fence

G. Relocated D. G. Trail

H. South Parking Lot

Accessible Parking Spaces Provided in Base Bid
Expanded Concrete Paved Lot Provided in Add Alternate Bid
Pathway Connection Provided to Robert E. Lee

I. Planting on Slope

Planted with Native Vegetation

J. Tree Court

A Portion of the Walkway is Elevated over Existing Pecan Tree Root Zone
Overlook Area
Informal Seating
Native Plantings

General Grounds Improvements

1. Tree Court
2. South Trail
3. Landscape
4. Perimeter Fencing
5. Electrical Upgrades and Water
6. South Parking Lot

August 13, 2012

Stansberry Engineering

