



Parking Benefit District

UNIVERSITY AREA PARTNERS

DATE XX, 2012

CREATED FOR THE URBAN TRANSPORTATION COMMISSION



Austin Mobility

Making mobility better, together.



## HISTORY: PILOT PROGRAM



- The West Campus Parking Benefit District pilot began July 2006 on San Antonio from 19th to 26th street (96 metered spaces)
- The pilot proved successful in managing parking along San Antonio Street and has generated revenue to help pay for neighborhood improvement projects



AUSTIN MOBILITY

Making mobility better, together.





## COUNCIL ACTION: PERMANENT PROGRAM

- As of October 2011, an ordinance was approved establishing PBD as a permanent program
- Following the success of the pilot program, University Area Partners is now seeking to expand the scope of the PBD



AUSTIN MOBILITY

Making mobility better, together.







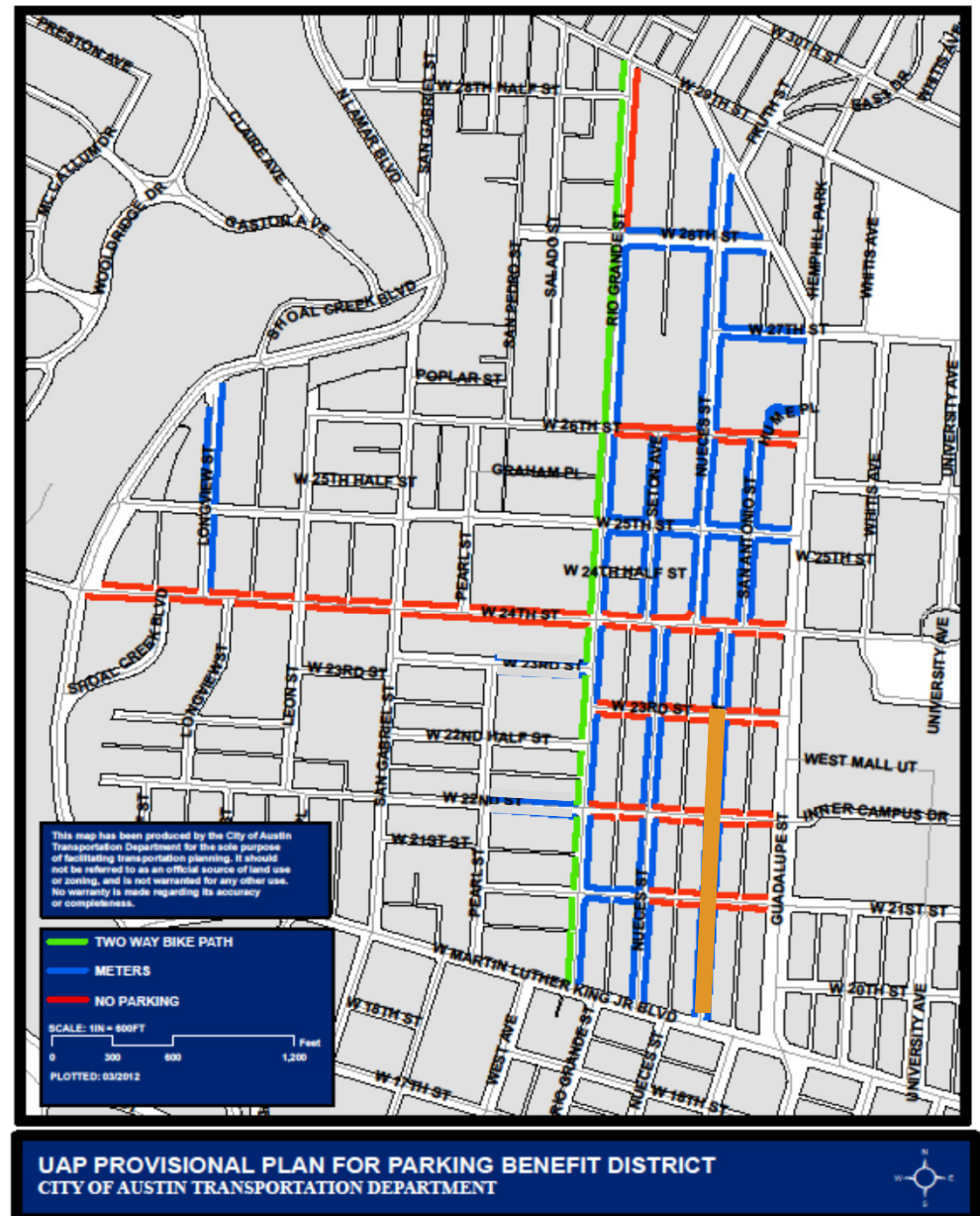




## BOUNDARIES

- Guadalupe to Rio Grande streets from MLK Jr. Boulevard to W.29<sup>th</sup> Street

-  Pilot program
-  Two-way bike path
-  Meters
-  No Parking





## PBD ORDINANCE

### Requirements

- Minimum of 96 parking spaces
- Map showing boundaries of Parking Benefit District
- Neighborhood representative to oversee meetings
- List of new and existing parking spaces
- Community meeting took place April 12<sup>th</sup>
  - Fliers, yard signs, and emails of community meeting distributed: March 29<sup>th</sup> & 31<sup>st</sup>, April 3<sup>rd</sup>, 6<sup>th</sup>, 9<sup>th</sup>, & 11<sup>th</sup>

### Requirements Met

- ✓ 289 new parking spaces
- ✓ Map provided
- ✓ Brian Donovan designated representative
- ✓ List provided
- ✓ Outreach done





## PBD ORDINANCE

### Requirements

- 3 & 5 hour meters; Mon-Sat from 8 a.m. to 6 p.m.
- City assumes cost for notification
- Neighborhood must explain in writing parking issues
- City must verify parking need to support claim

### Requirements Met

- ✓ Yes
- ✓ City paid \$550: postcards, fliers, and yard signs
- ✓ Neighborhood claims parking deficiencies as issue
- ✓ Parking Study (July 7 to July 17, 2012) shows 97% occupancy

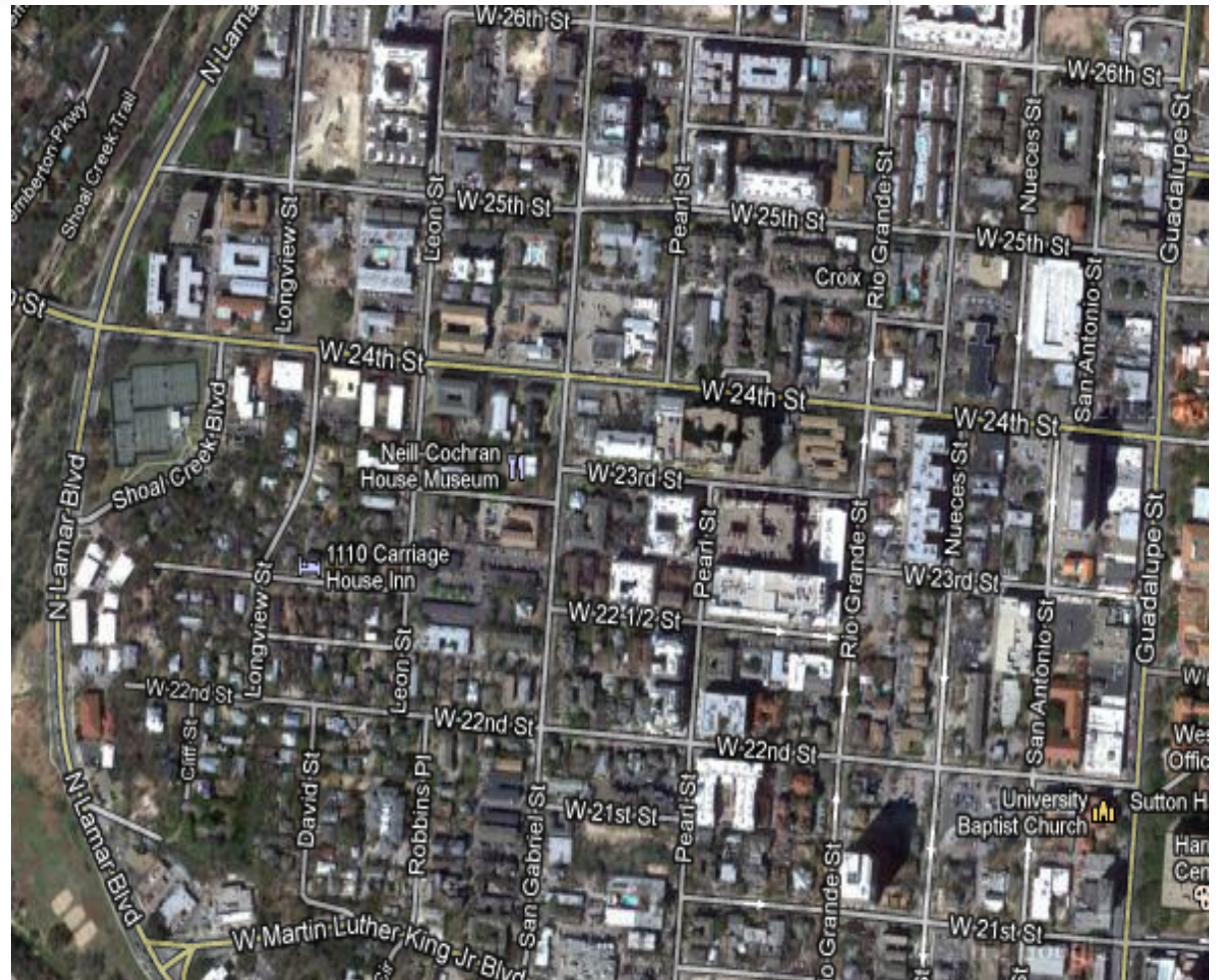




## IMPROVEMENTS REQUESTED BY NEIGHBORHOOD

### Estimated project costs for UNO streetscape

- 25th St. - Guadalupe to Block on 25th just west of Rio Grande - **\$400,000**
- 21st St. - Guadalupe to San Gabriel - **\$700,000**
- 22nd St. - Guadalupe to Leon St. - **\$400,000**
- 26th St. - Guadalupe to Leon St. - **\$300,000**
- 25th St. - Rio Grande to Lamar - **\$500,000**



AUSTIN MOBILITY

Making mobility better, together.



## UNIVERSITY AREA PARTNERS

### Parking Proforma Compiled by Staff

West Campus Revenue Estimate							
Parking Benefit District Proforma 2012-2013							
Area: San Antonio-Lamar Blvd MLK Blvd - W. 29th St.							
Total Meter Revenue						\$470,720	
Estimated City Expenses						\$328,509	
West Campus PBD	51%					\$72,528	
Neighborhood Partnering Program (NPP)						\$72,528	
<b>Total PBD Revenue for area projects</b>						<b>\$145,056</b>	

\*\*\*NPP-City initiative to match neighborhood funds for beautification purposes on the City sidewalks.



AUSTIN MOBILITY

Making mobility better, together.







## NEXT STEPS

- Seek Urban Transportation Commission Approval
- Proposal to City Council September 27
- If approved by Council, PBD to be implemented in December over student holiday



AUSTIN MOBILITY

Making mobility better, together.

