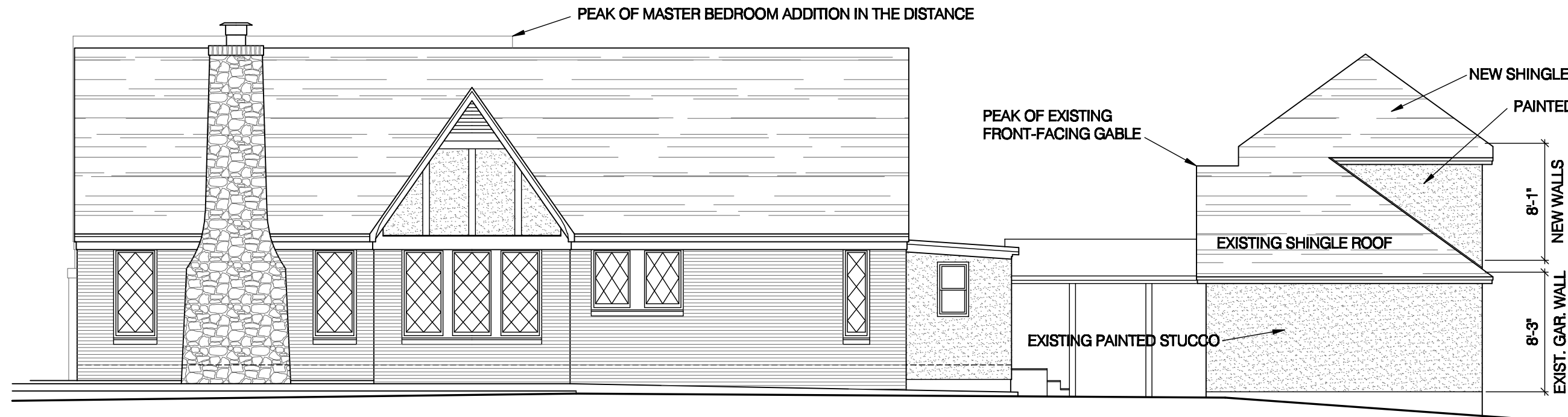
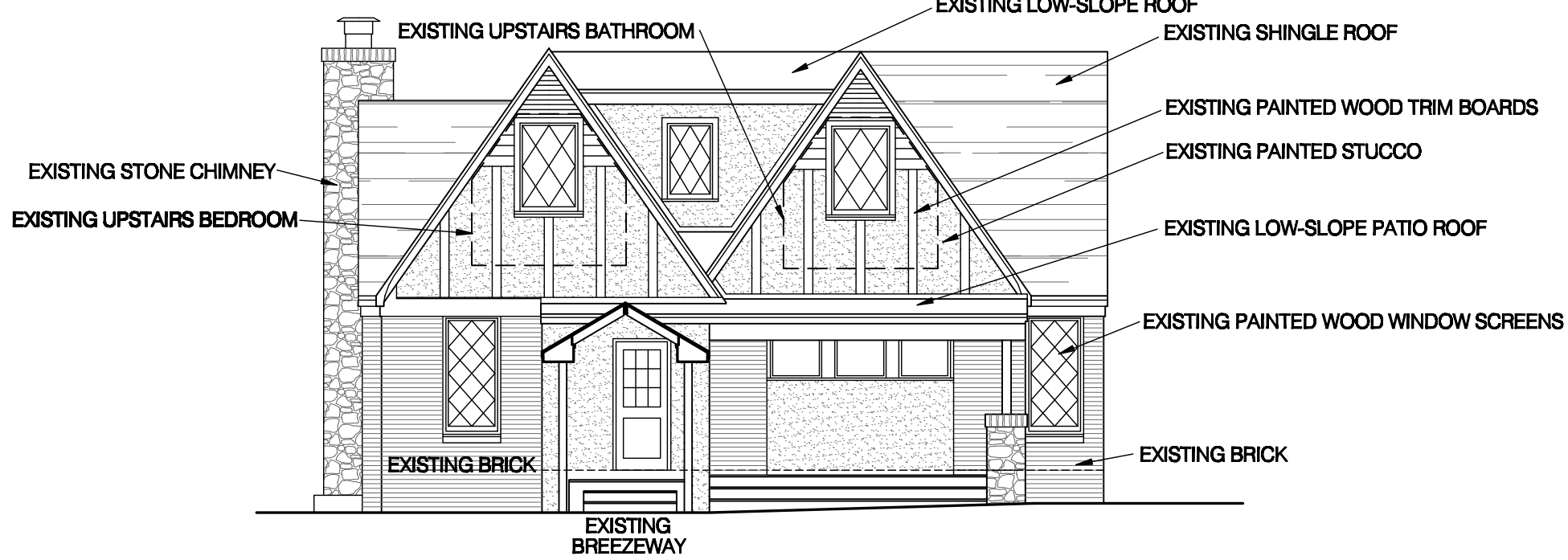




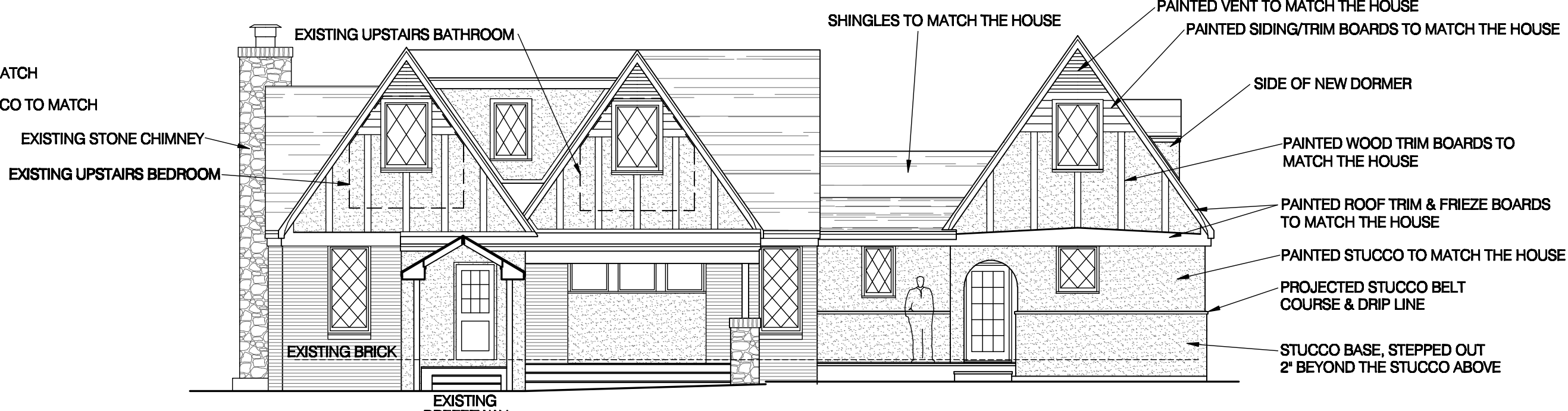
BEFORE - Side (North) Elevation
1/8" = 1'-0"



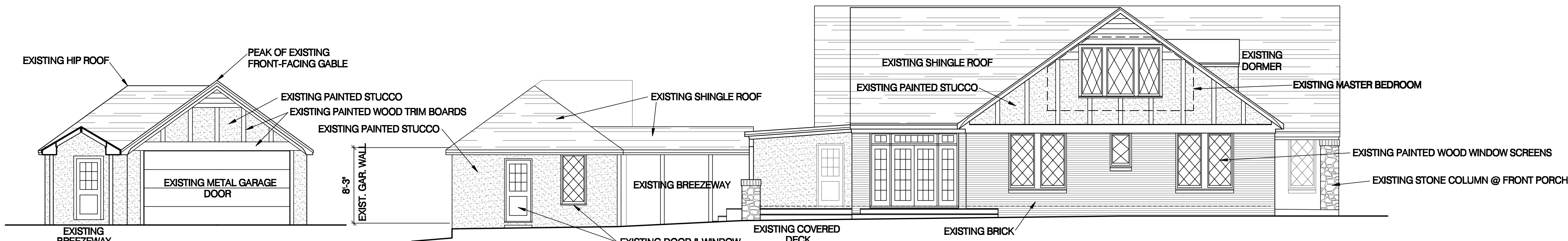
AFTER - Side (North) Elevation
1/8" = 1'-0"



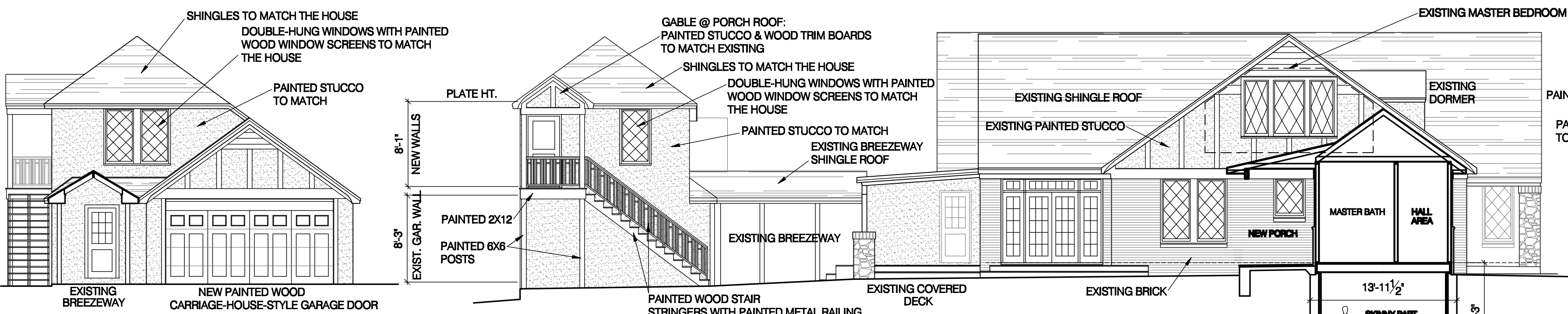
BEFORE - Back (West) Elevation
1/8" = 1'-0"



AFTER - Back (West) Elevation
1/8" = 1'-0"



BEFORE - Front (East) of Garage
1/8" = 1'-0"



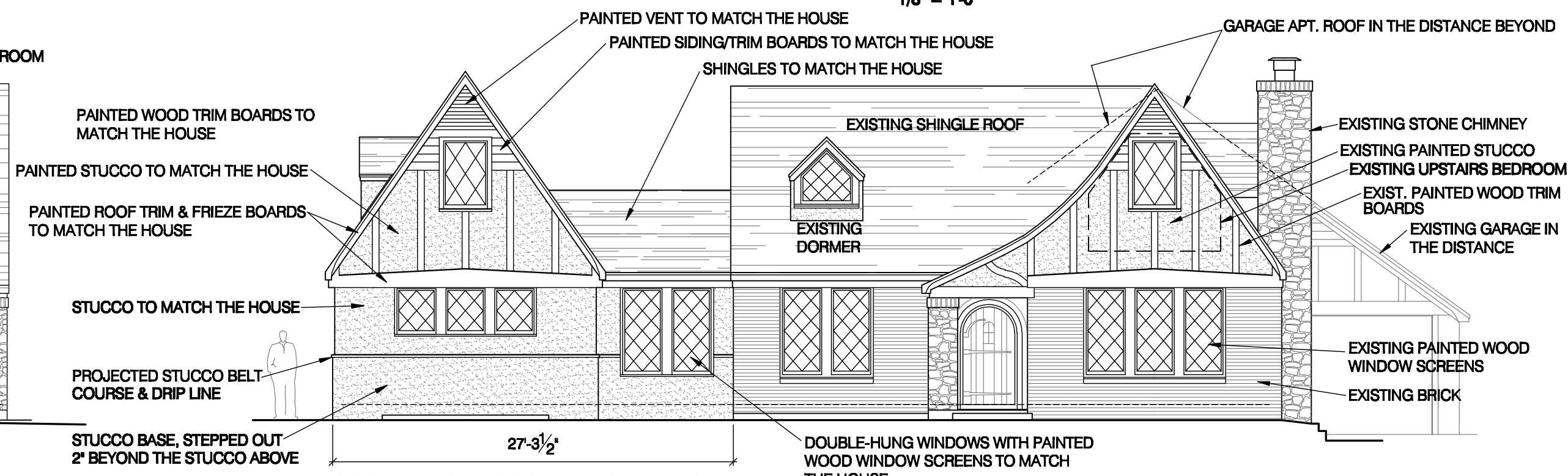
AFTER - Front (East) of Garage
1/8" = 1'-0"

BEFORE - Side (South) Elevation
1/8" = 1'-0"

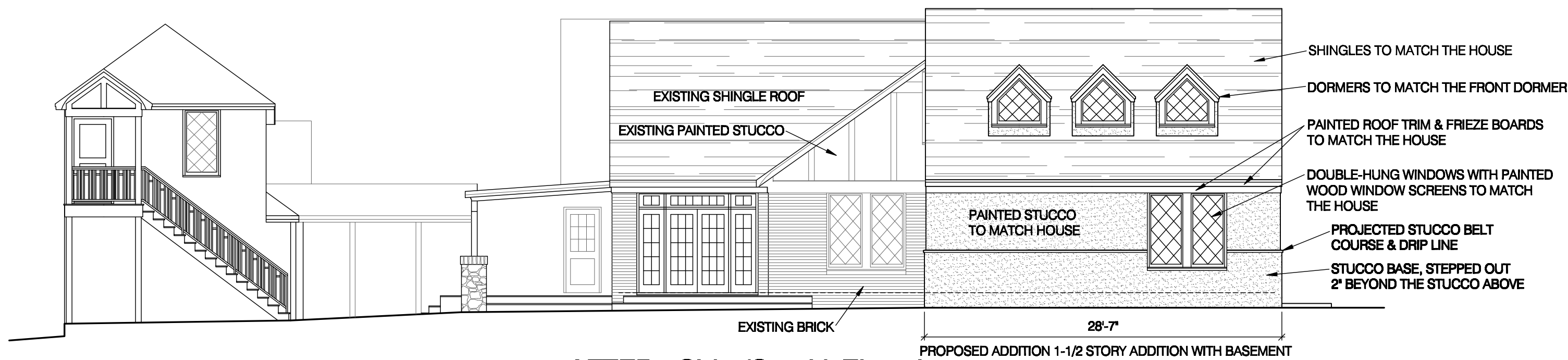
AFTER - Cross-Section Looking North
1/8" = 1'-0"



BEFORE - Front (East) Elevation
1/8" = 1'-0"



AFTER - Front (East) Elevation
1/8" = 1'-0"



AFTER - Side (South) Elevation
1/8" = 1'-0"

PRELIM. FOR REVIEW
9/24/2012
PRELIM. FOR REVIEW
9/28/2012
REVISED (NO STONE)
10/18/2012

REVISED (NO STONE ON ADDITION)
10/16/2012

Preliminary -
not for regulatory
review, permit or
construction

Remodel & Addition to the Jackson Residence
2418 Jarratt, Austin, TX
Paul DeGroot, Architect
6202 Highland Hills Drive
512 345 2228
Austin, TX 78731

SHEET
A2
2 OF 2