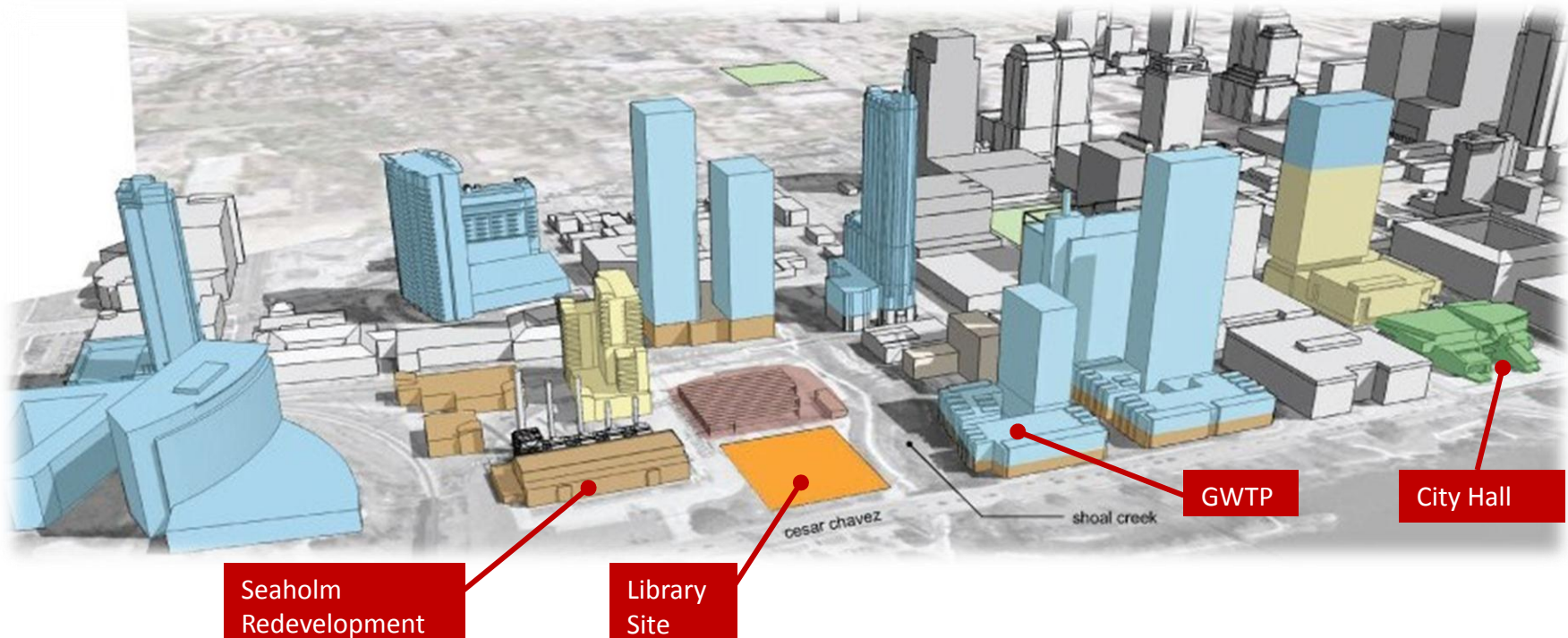


A Library for the Future



New Central Library - A Library for the Future



Design Development

Construction
Documentation

Construction

*60% Complete
Summer 2012*

*Design Complete
Spring 2013*

*Construction Completion
Fall 2015*



New Central Library - A Library for the Future

Responding to Community Input

Architecture

- 🏛️ Natural Light
- 🏛️ Sustainable Design

Access

- 🏛️ Parking
- 🏛️ Bike Racks
- 🏛️ Public Transportation

Program







- 🏛️ Children's Area
- 🏛️ Food Venue
- 🏛️ Quiet Reading Room
- 🏛️ Public Gathering Spaces
- 🏛️ Technology Rich

New Central Library as designed is 198,000 square feet.



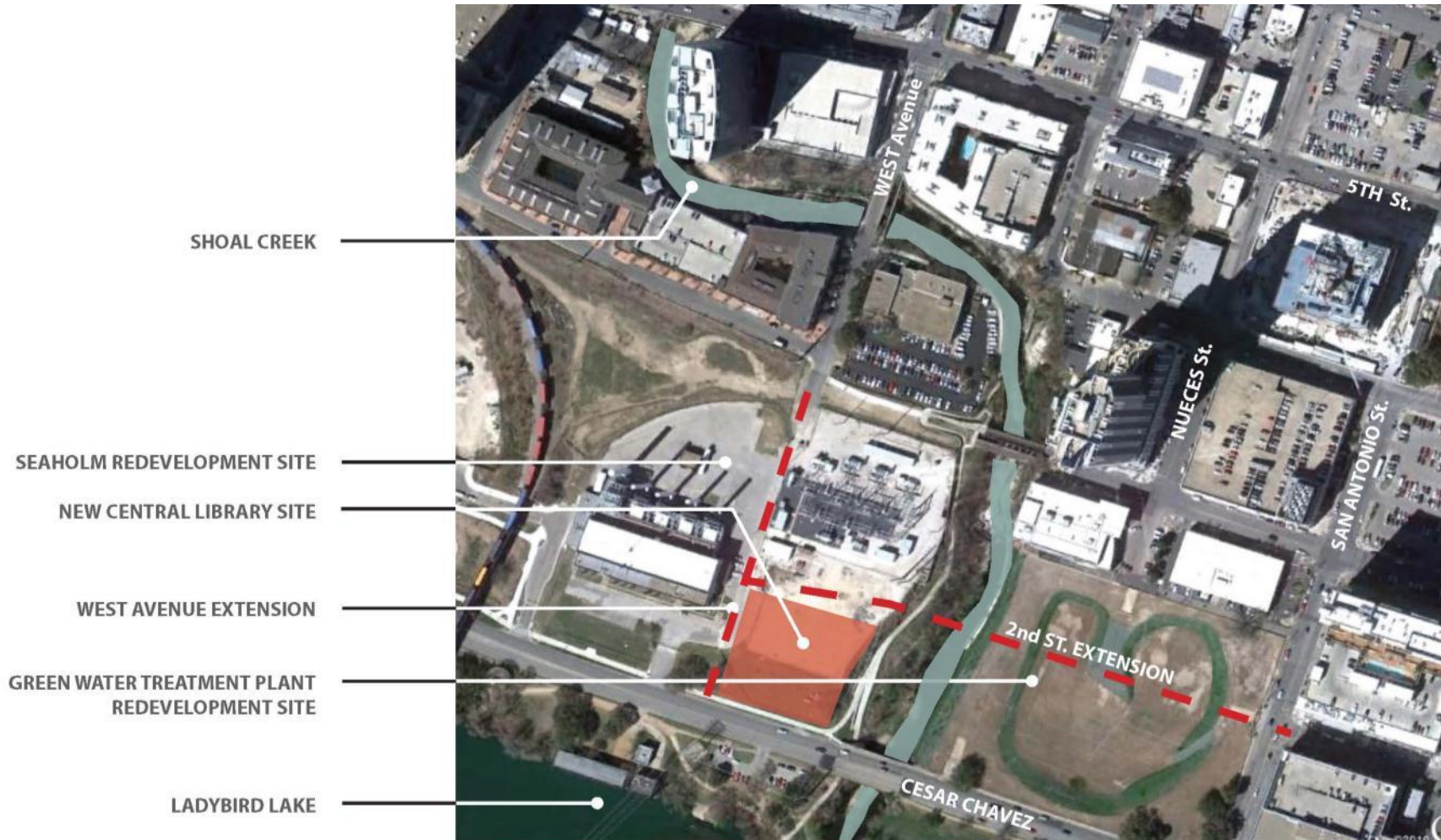
New Central Library - A Library for the Future

Features

-  Flexible & Blended Spaces
-  Focus on Electronic Delivery of Information
-  State of the Art Technologies
-  Community Gathering Place Promoting
-  A Mixture of Both Lively and Contemplative Spaces
-  Collections Displayed to Encourage Discovery



New Central Library - A Library for the Future





Library Site Connections

Pedestrian Use



Lance Armstrong
Bikeway



Hike & Bike Trail



Level 2

Level 1

Entrance

Entrance

Entrance

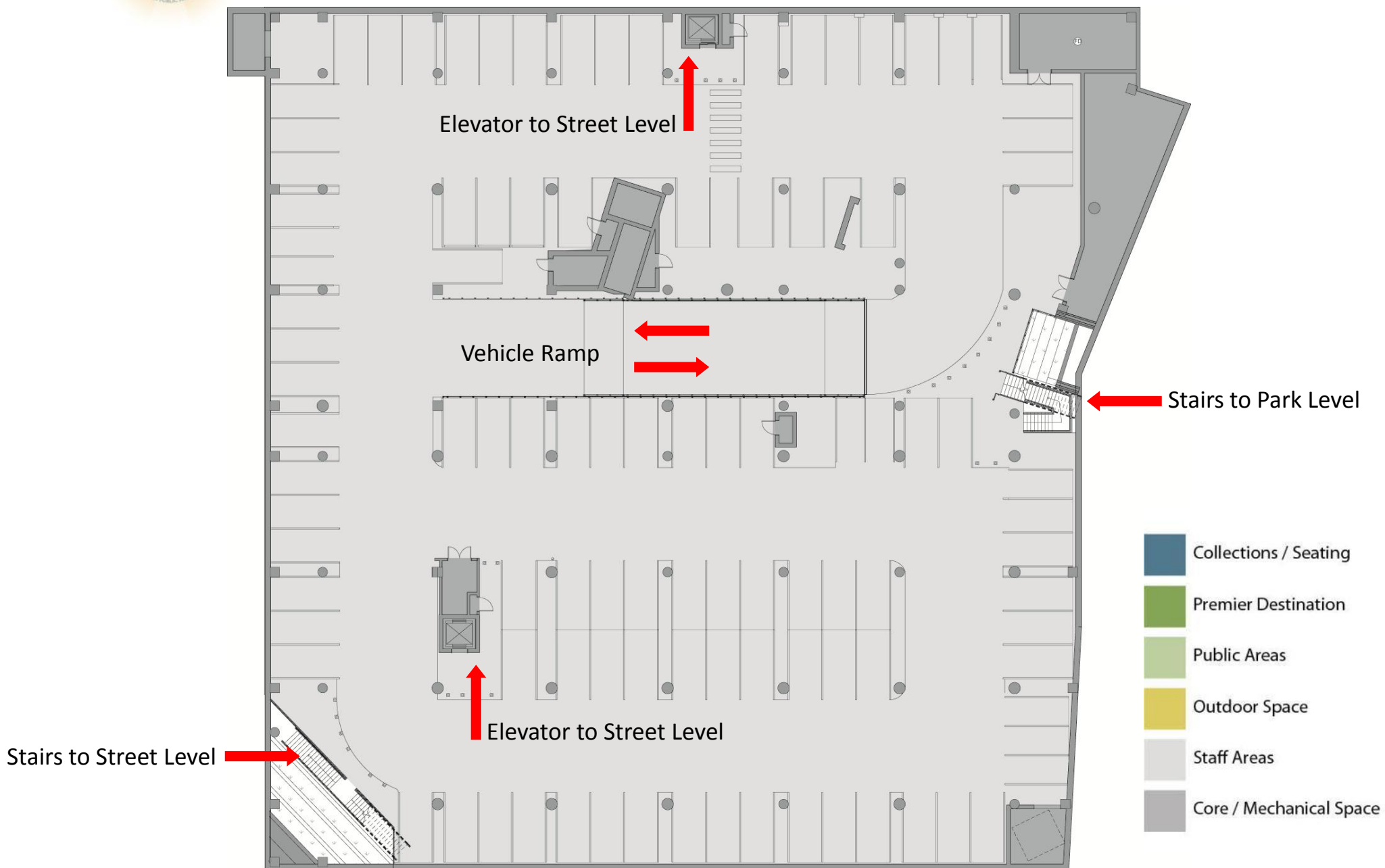
Festival Streets
Second Street

Hike and Bike Trail

Lance Armstrong Bikeway



Program Organization 2 Levels of Parking 200+ cars

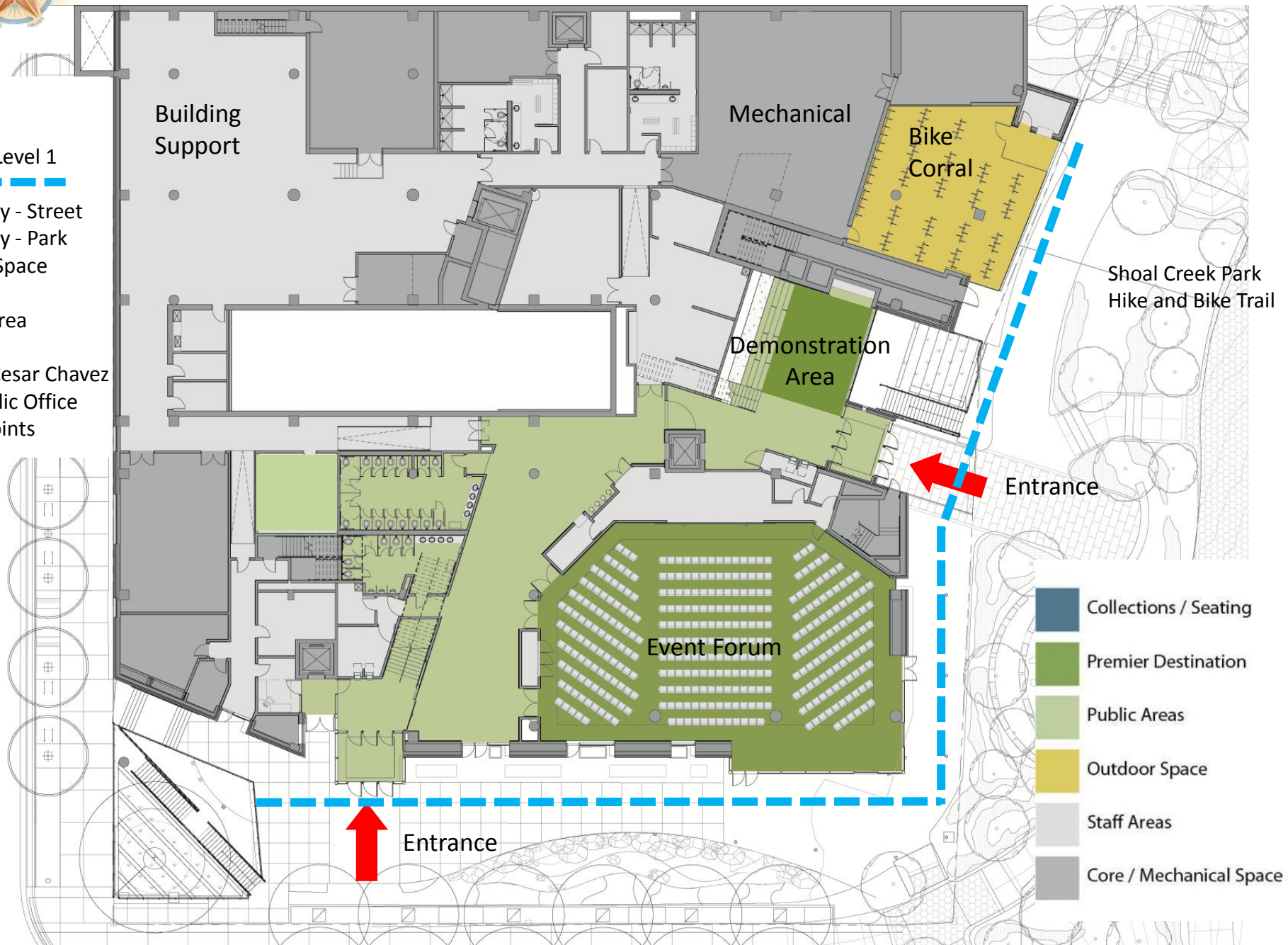




Program Organization – Level 1

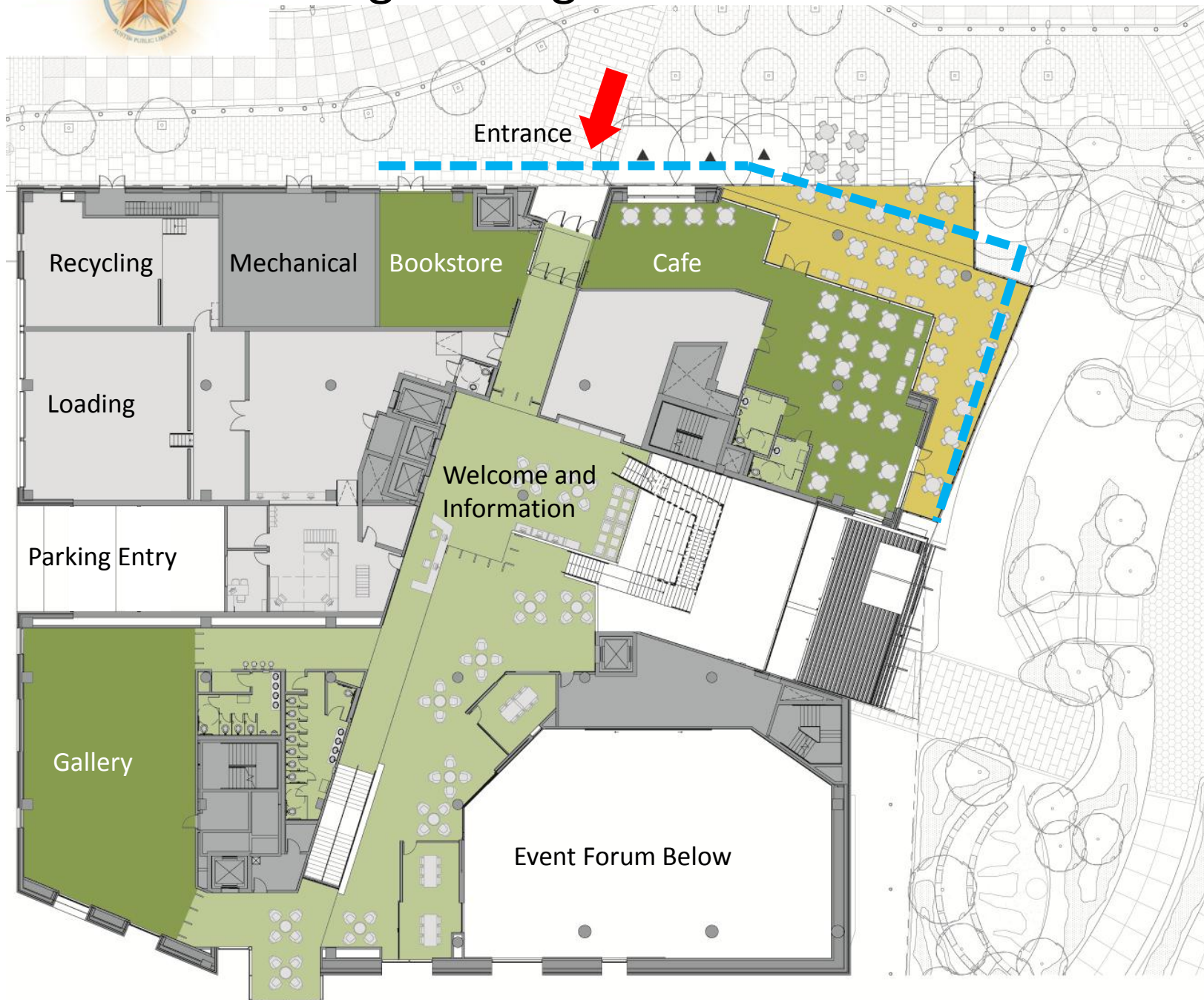
Pedestrian Uses Level 1

Main Library Entry - Street
Main Library Entry - Park
Multi-Use Event Space
Library Atrium
Demonstration Area
Bicycle Corral
Outdoor Plaza - Cesar Chavez
Event Forum Public Office
Garage Access Points





Program Organization – Level 2



Pedestrian Uses Level 2

Retail Bookstore
Café
Outdoor dining
Main Library Entry
Public Seating
Festival Street Design

- Collections / Seating
- Premier Destination
- Public Areas
- Outdoor Space
- Staff Areas
- Core / Mechanical Space

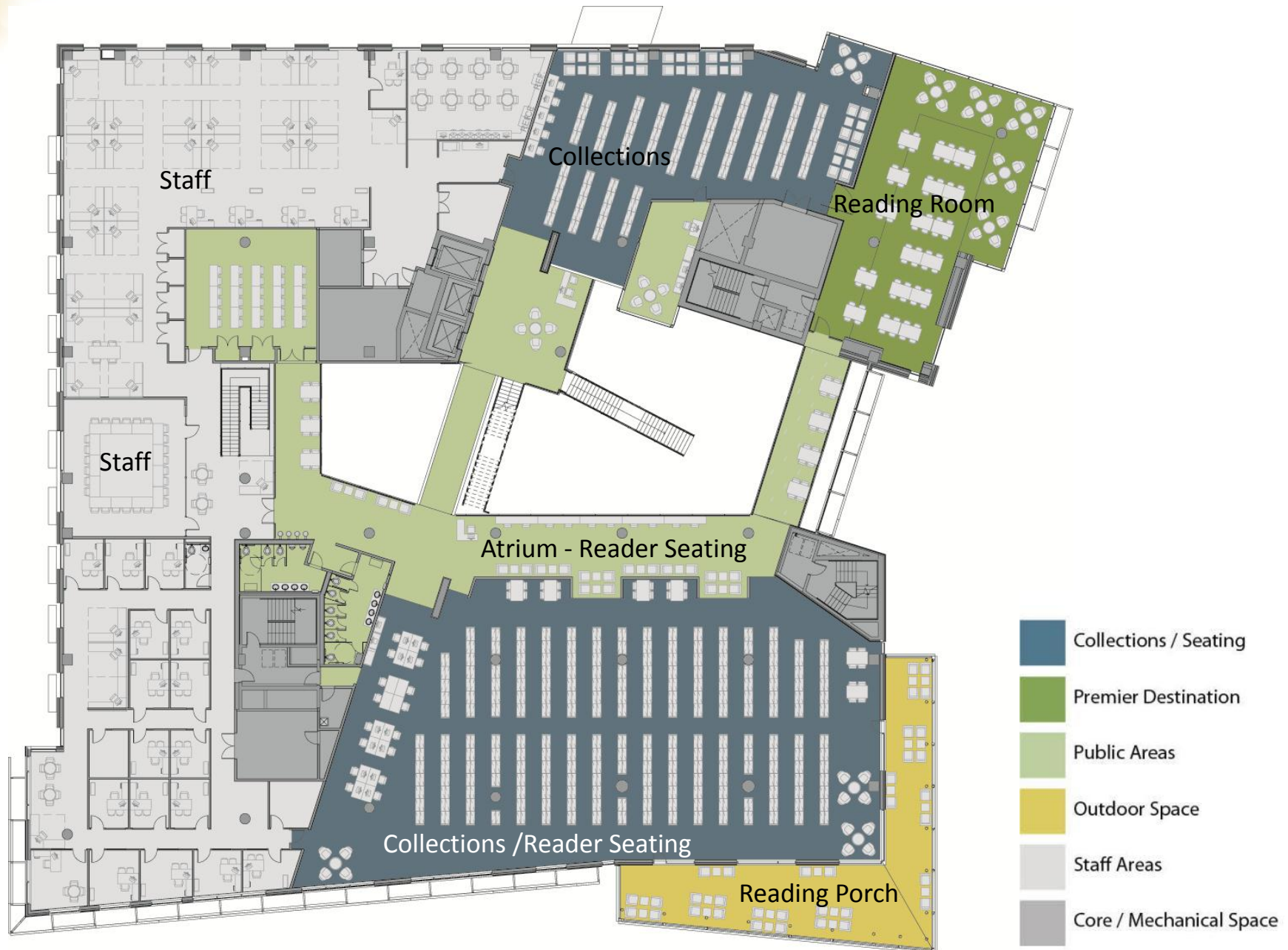


Program Organization – Level 3



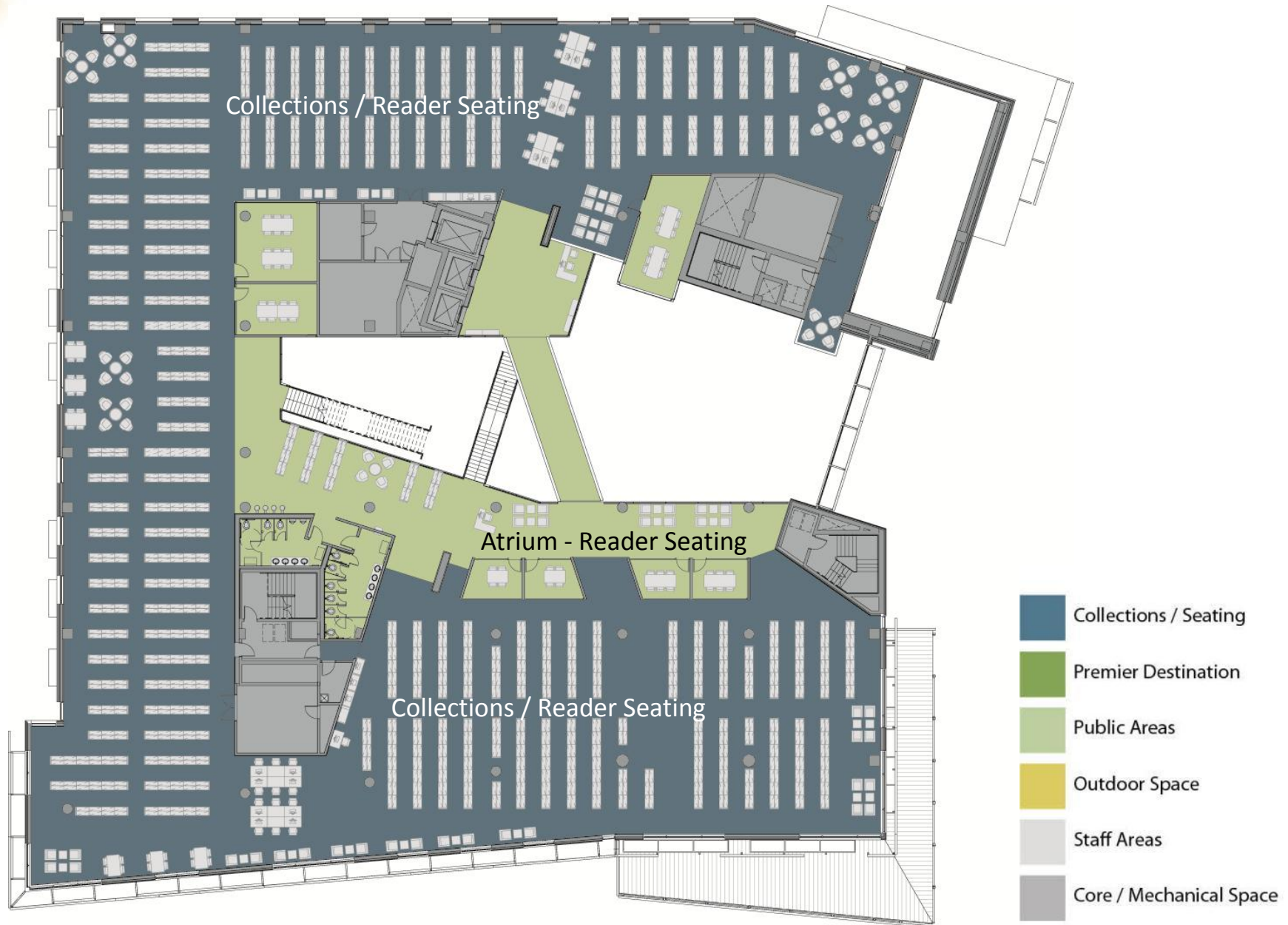


Program Organization – Level 4





Program Organization – Level 5





Program Organization – Level 6





New Central Library - A Library for the Future

The New Central Library
will be.....

A welcoming lantern to
downtown Austin





New Central Library - A Library for the Future

An inviting
destination that is
uniquely Austin

- Great Reading Porches and Reading Room overlooking Shoal Creek and Lady Bird Lake
- Main Atrium Space adjacent to Shoal Creek will be a landmark public gathering space for the District
- Café integrated with Library providing outdoor dining adjacent to Second St. and Shoal Creek Park
- Multi-Purpose Event forum will host large scale Library and Public Events adjacent to Shoal Creek and Cesar Chavez Blvd.
- Recycled Reads an Austin Public Library retail bookstore continuing retail corridor along Second St.
- Gallery Space that will feature local and national artists providing an amenity to the Lower Shoal Creek District
- Abundant bicycle parking in the Bicycle Corral adjacent to the Lance Armstrong Bikeway
- A permanent exhibit of beloved puppets created by the Austin Public Library



View from Cesar Chavez Boulevard



Protected Pedestrian Paths, Connections to Green Space, Access to Views, Shaded South Plaza



View from Southeast: Shoal Creek Plaza



Connections to Green Space, Hike & Bike Trail, Bike Corral, Green Roof, Dynamic Roof Form



View from Second Street towards West Avenue



Connection to Shoal Creek, Outdoor Dining at Café, Retail Bookstore, Main Library Entry



Sustainable Strategies



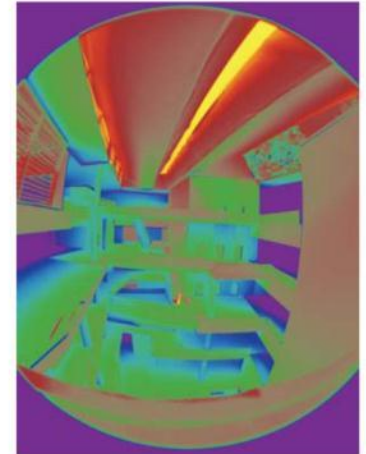
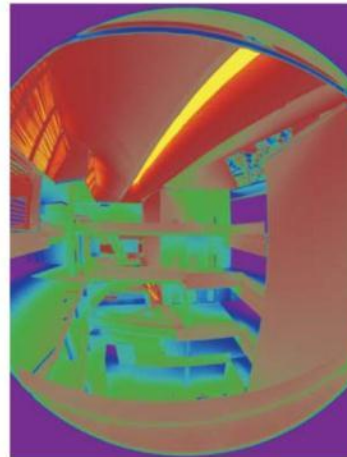
West Cesar Chavez looking to Downtown



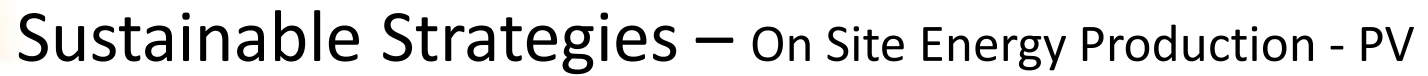
Sustainable Strategies – Daylight Modeling and Analysis



Physical Model Testing: March 22, 2012, San Antonio, TX



New Central Library | Austin, TX | Integrated Design Lab- Seattle | University of Washington | 23 July 2012.



- Energy production target: 13% of annual building consumption
- Projected annual building consumption: 1,925,820 kWh
- Proposed system size of 177 kW yields 266,322 kWh/year

- Grid-parallel system with central inverters

- Arbor
- North light monitor
- Southwest roof

- PV Modules
- Inverters
- Data Acquisition and Monitoring





Sustainable Strategies – Energy Modeling and Analysis

Implemented Efficiency Measures

- Demand Controlled Ventilation
- Variable Air Volume
- Variable Water Flow
- Connects to District Chilled Water Service
- Day lighting Control
- Extensive Use of LED's
- On site Energy Production

The New Central Library features a 200kW Photovoltaic array; the largest PV installation for non-Austin Energy facility

The New Central Library is designed to operate at 30% more efficient than code requires resulting in energy savings equivalent to 130 households per year



Sustainable Strategies — Rainwater and Condensate Collection



Anticipated water collection volumes

Rainwater collection	725,000 Gallons
Condensate Collection	350,000 Gallons
Total Annual Collection	1,050,000 Gallons
Non Potable Demand	825,000 Gallons



Sustainable Strategies

Native Diverse Landscaping Building as Teaching Tool





Atrium adjacent to Shoal Creek, Community Gathering Space, Adjacent to Hike & Bike Trail



Atrium Level 6 looking toward Lady Bird Lake



Atrium adjacent to Shoal Creek, Community Gathering Space, Adjacent to Hike & Bike Trail



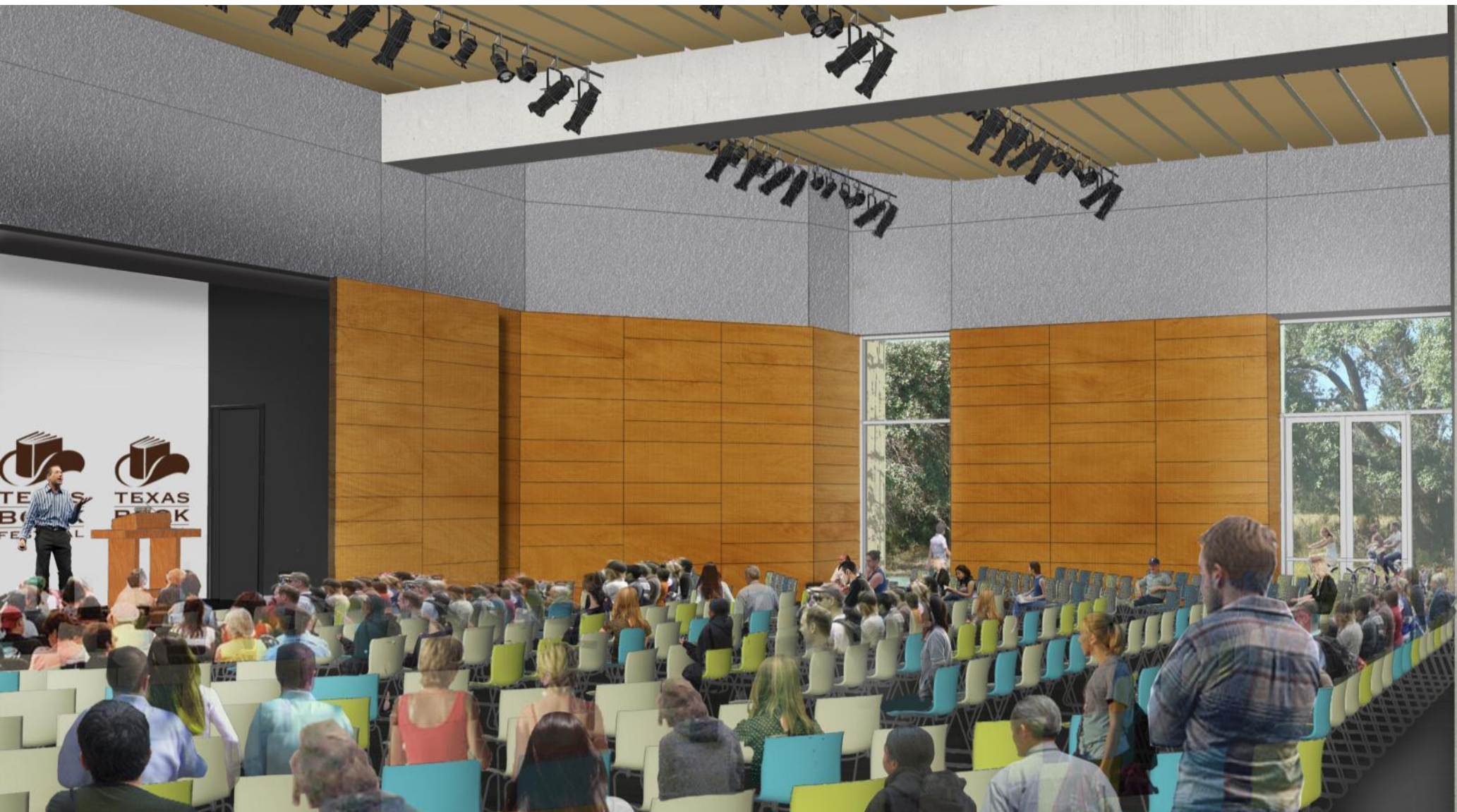
Atrium Level 3 Looking East



Atrium adjacent to Shoal Creek, Community Gathering Space, Adjacent to Hike & Bike Trail



Event Forum Looking East to Shoal Creek



Event Forum opens to Shoal Creek and South Plaza – Functions integrate with district wide events



Event Forum Banquet Seating



Event Forum Hosting Functions for Community Groups



Reading Room Interior Looking North East



Reading Room provides views to Shoal Creek, Second St. and City Skyline



Reading Room Interior Looking South



Reading Room provides views to Shoal Creek, Second St. and City Skyline



Children's Reading Porch Looking West



Children's Reading Porch provides views to Shoal Creek, Ladybird Lake and West Hills



Children's Area



Children's area provides views to Creek and Lady Bird Lake as well as large open area for story time



Teen Area



Teen Area provides views to Shoal Creek, Second St. and City Skyline



Project Budget

- Construction Budget - \$90 Million
- Comparative estimates are within budget



New Central Library - A Library for the Future

An inviting
destination that is
uniquely Austin

- Great Reading Porches overlooking Shoal Creek and Lady Bird Lake
- Abundant bicycle parking in the Bicycle Corral adjacent to the Lance Armstrong Bikeway
- A special display area honoring Austin restaurants and chefs with a cooking demo area
- A special display area honoring Austin music and musicians
- A special display area and Austin film collection celebrating Austin's cinematic achievements
- A permanent exhibit of beloved puppets created by the Austin Public Library
- Custom made shelving to enhance the display of collection items for serendipitous discovery



A Library for the Future

The New Central Library will
be.....

Unique as Austin



Photo courtesy of Elizabeth Berry



New Central Library - A Library for the Future

Next Steps

- 🏛️ August 2012 - Design and Downtown Commissions presentation
- 🏛️ City Council Briefing - September 27, 2012
- 🏛️ Library Commission Briefing - October 1, 2012
- 🏛️ October 2012 - Design Development Complete (60% Design)
- 🏛️ February 2013 - Council Approves Construction Cost Limitation
- 🏛️ Spring 2013 - Construction Documents Complete
- 🏛️ Fall 2013 - Groundbreaking, Construction Begins
- 🏛️ Spring 2016 - Grand Opening Celebration



View from Southeast: Shoal Creek Plaza

