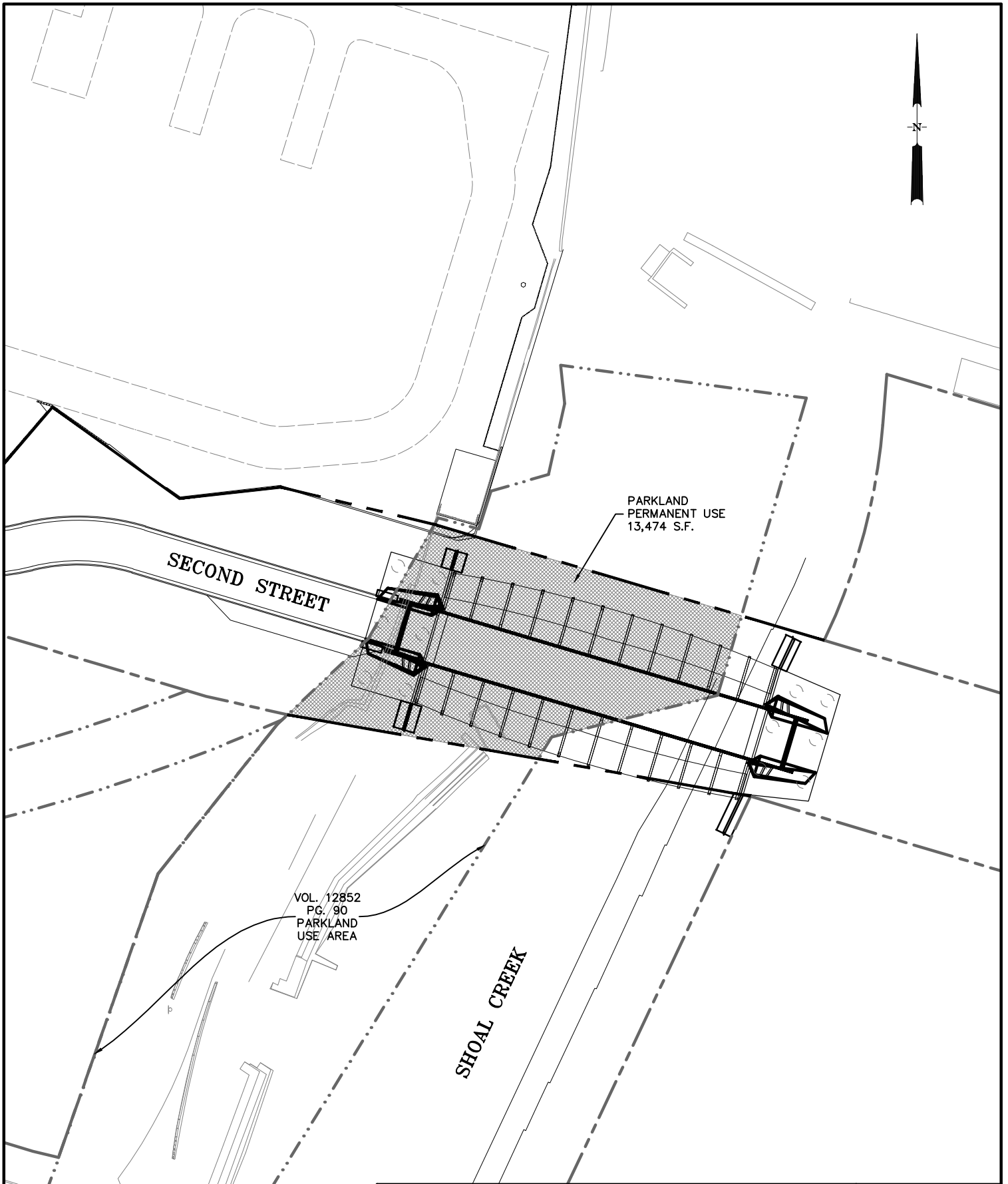




Seaholm Development District



CITY OF AUSTIN, TEXAS
DEPARTMENT OF PUBLIC WORKS
ENGINEERING SERVICES DIVISION

SECOND STREET EXTENSION
SHOAL CREEK TO WEST AVENUE

PARKLAND PERMANENT USE EXHIBIT
AND AREA CALCULATION





CITY OF AUSTIN, TEXAS
DEPARTMENT OF PUBLIC WORKS
ENGINEERING SERVICES DIVISION

SECOND STREET EXTENSION
SHOAL CREEK TO WEST AVENUE

PARKLAND PERMANENT USE
AERIAL IMAGE



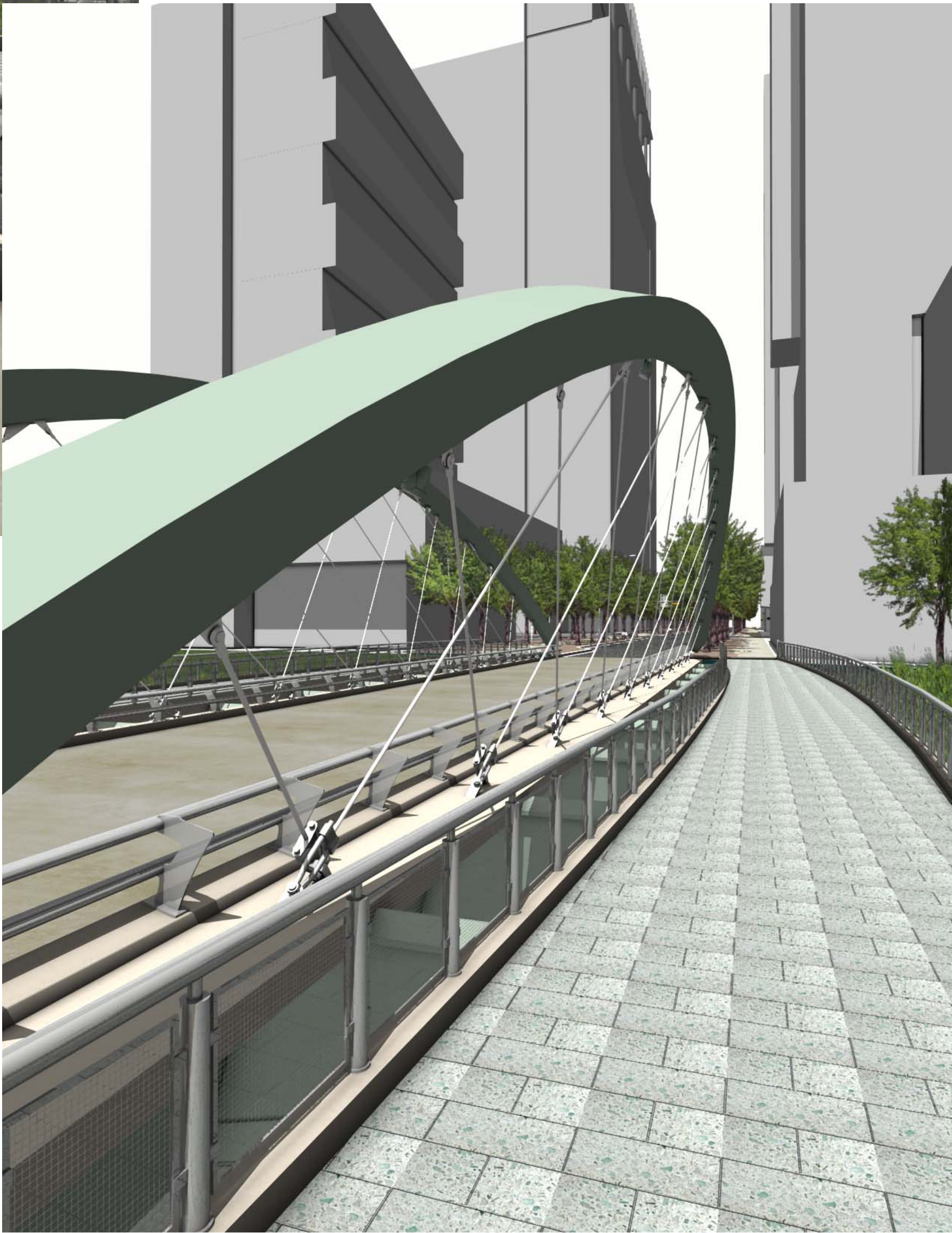




1
A-102

VIEW FROM ROADWAY

NOT TO SCALE



2
A-102


VIEW FROM SIDEWALK

NOT TO SCALE

APPROVED BY:

PLANNING AND
DEVELOPMENT REVIEW DEPARTMENT

DATE

CITY OF AUSTIN, TEXAS DEPARTMENT OF PUBLIC WORKS ENGINEERING SERVICES DIVISION		2ND ST BRIDGE AND EXTENSION SHOAL CREEK TO WEST AVENUE		VIEWS FROM ROADWAY AND SIDEWALK	
<div><div>TOUCHSTONE ARCHITECTURE</div><div>3011-1 Powell Road Tallahassee, FL 32308 www.touchstonearchitecture.com FL # 20067138</div></div>					
NOTES	NAME	DATE			
SURVEY BY					
DRAWN BY					
DESIGNED BY					
CHECKED BY					
REVIEWED BY					
A-102		OF			



Seaholm Development District



Seaholm Development District