

WATER AND WASTEWATER  
SERVICE EXTENSION  
REQUEST FOR  
CONSIDERATION

Name: 8647 W. Highway 290	Service Requested: Water
---------------------------	--------------------------

SER-3158	Hansen Service Request Number 460800	Date Received: 06/15/2012
----------	--------------------------------------	---------------------------

Location: 8647 W US 290 HWY AUSTIN TX 78737- 8647 W. HIGHWAY 290

Acres: 1.49	Land Use: WAREHOUSE
-------------	---------------------

Alt. Utility Service or S.E.R. Number: Onsite Sewage Facilities

Quad(s): A19	DDZ: NO
--------------	---------

Drainage Basin: SLAUGHTER	Pressure Zone: SOUTHWEST C	DWPZ: YES
---------------------------	----------------------------	-----------

Flow: (Estimated Peak Hour Flow, Gallons per Minute) 7 GPM	% Within City Limits: 0
--	-------------------------

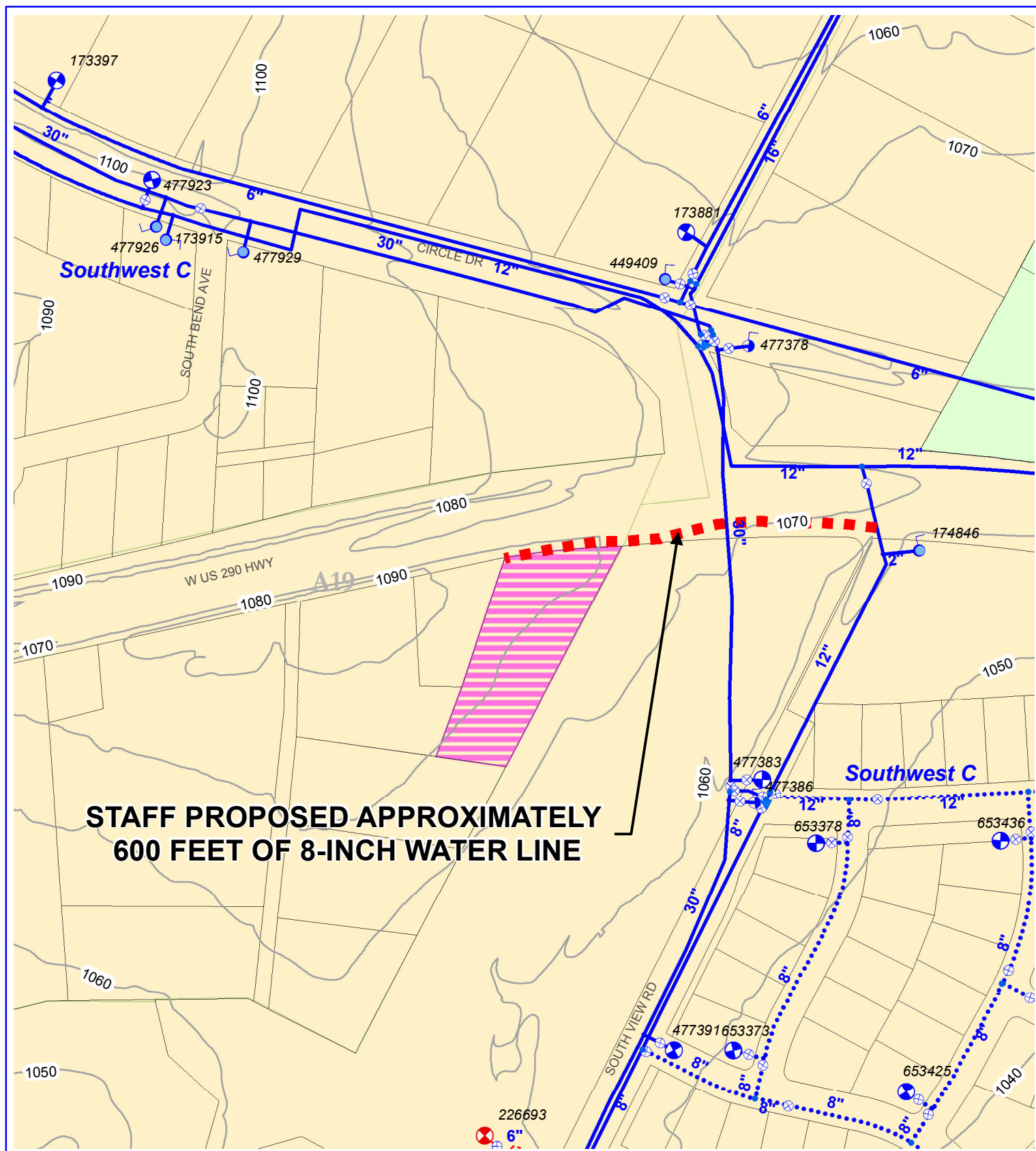
Cost Participation: \$0.00	% Within Limited Purpose: 0
----------------------------	-----------------------------

**Description of Improvements:**  
Applicant shall construct approximately 600 feet of 8-inch water line from the existing 12-inch water line (Project no. 95-1500) located east of the intersection of W US 290 HWY and SOUTH VIEW RD, west along W US 290 HWY to SOUTH VIEW RD, west across SOUTH VIEW RD, and then west along the private driveway to the subject tract as shown on the attached map.

NOTE: Fire flow requirement of 1,500 gpm based on engineering calculations from Chad Kimbell, P.E., received on 11/15/2012.

**Approval of this Service Extension Request is subject to completion and acceptance of the improvements described above and the conditions set forth below:**



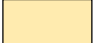
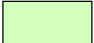
- 1) Construction of all Service Extensions is subject to all environmental and planning ordinances.
- 2) Service Extensions are subject to the guidelines established in the Land Development Code, Section 25-9, Water and Wastewater Utility Service.
- 3) The level of service approved by this document does not imply commitment for land use.
- 4) Public utility lines must meet City of Austin design and construction criteria and must be approved by Austin Water Utility Engineering Review.
- 5) Approval of a site plan that meets the Fire Department requirements for fire control.
- 6) Proposed public water improvements will be dedicated to the City of Austin for ownership, operation, and maintenance.
- 7) Proposed public water improvements must be placed in the public right-of-way or approved utility easements. Utility easements must be in place prior to construction plan approval.
- 8) The approved Service Extension will automatically expire 120 days after date of approval unless a development application has been accepted by the Planning and Development Review Department. The Service Extension expires on the date the development expires, or if approved, on the date the development application approval expires.
- 9) Approval by the City Council will be required based on Austin City Code §25-9-35.



**STAFF PROPOSED APPROXIMATELY  
600 FEET OF 8-INCH WATER LINE**



0 100 200 400 600 Feet

-  Subject Tract
-  Full-Purpose Jurisdiction
-  2-mile ETJ
-  Limited-Purpose Jurisdiction

**W. S.E.R. Name: 8647 W. Highway 290**

**W. S.E.R. Number: 3158**

Utility Development Services Plotted 12/11/2012