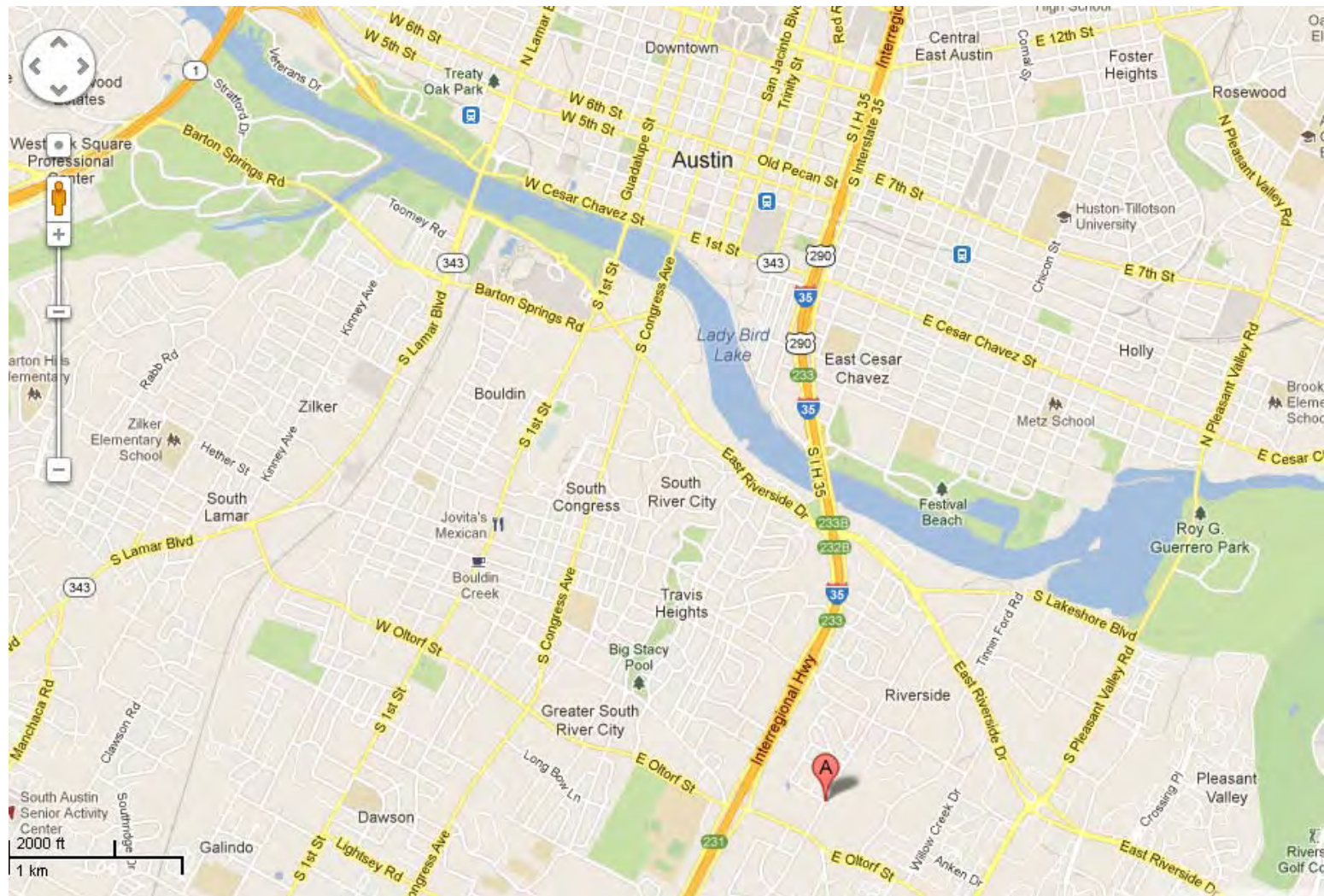




Heritage Oaks Park Tree Care

Urban Forestry Board
January 16, 2013





19 June 2012 KO

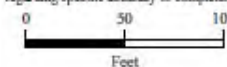
2100 Parker Lane: Soil Analysis and Prescribed Treatment



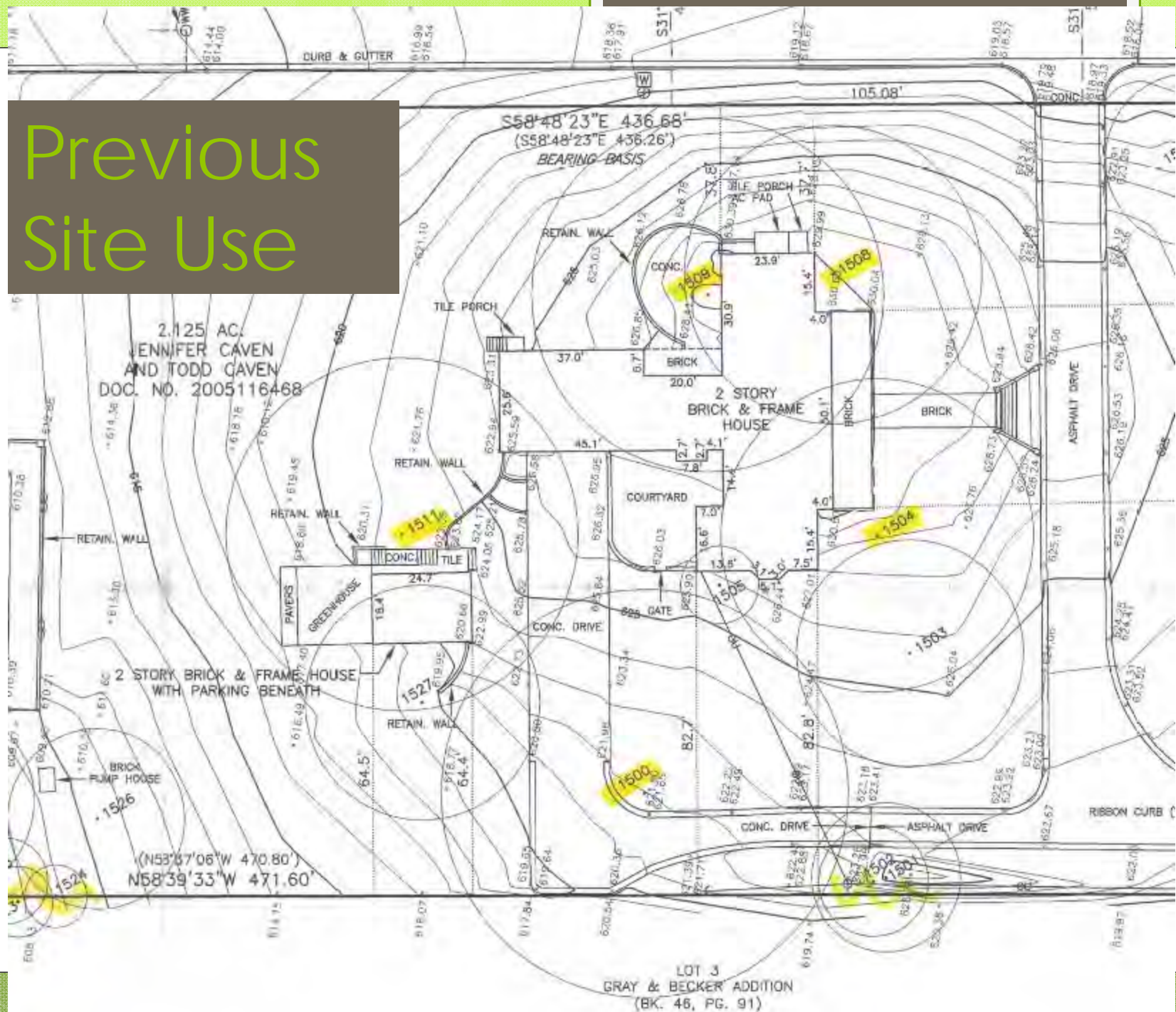
Legend

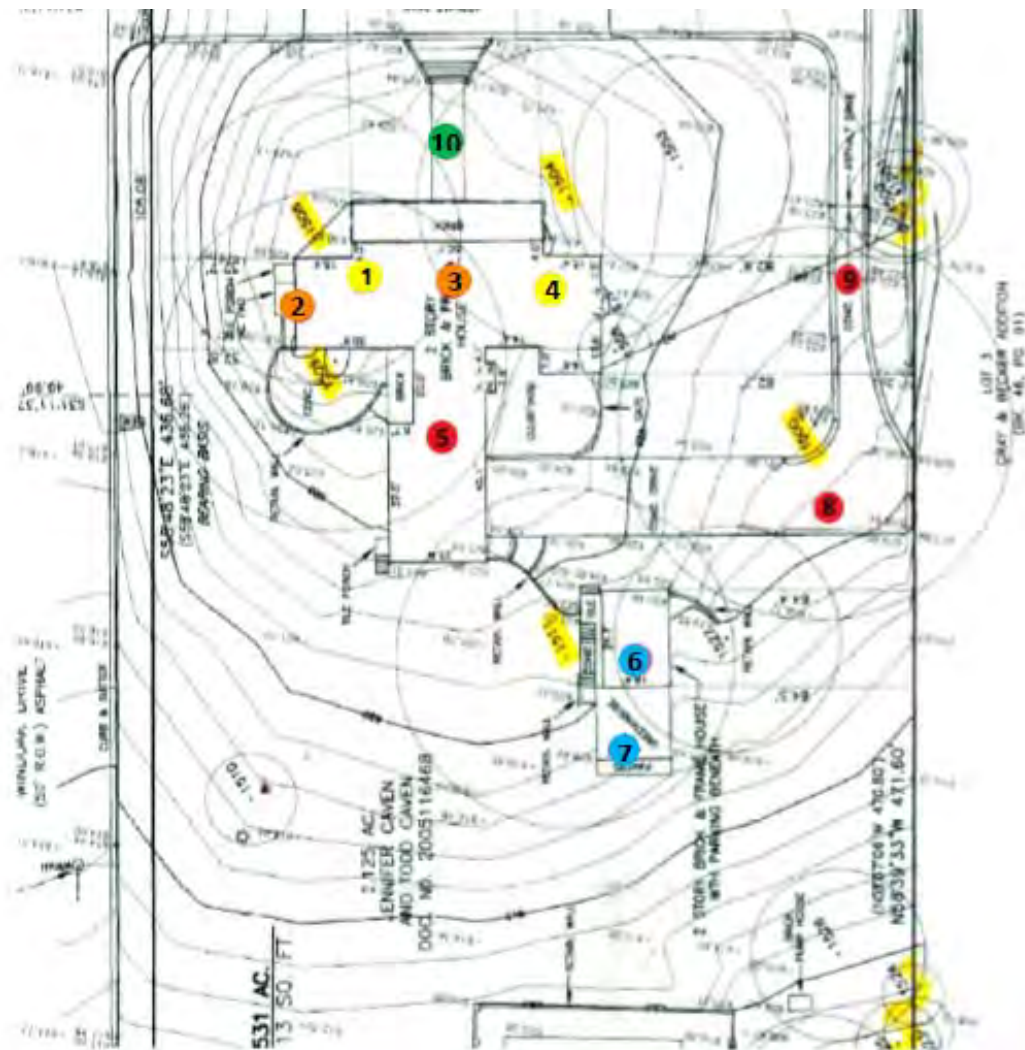
- Treatment Trees

This product is for informational purposes and may not have been prepared for or be suitable for legal, engineering, or surveying purposes. It does not represent an on-the-ground survey and represents only the approximate relative location of property boundaries. This product has been produced by the Parks and Recreation Department for the sole purpose of geographic reference. No warranty is made by the City of Austin regarding specific accuracy or completeness.



Previous Site Use





Legend

- 1.1 g/cm³
- 1.2 g/cm³
- 1.3 g/cm³
- 1.5 g/cm³
- 1.6 g/cm³

Heritage Oaks Park

- PARD acquired 3.5 acres of land at 2100 Parker Ln (2006 Bond Project)
- Funds left over from acquisition
- PARD decided to spend funds on tree care
- Referred to as “Heritage Oaks Park” by PARD Planning staff

Scope of Project

- ◉ Dead wood pruning (all trees)
- ◉ Soil analysis
- ◉ Bulk density sampling (by Forestry staff)
- ◉ Rx soil treatment to full CRZ (Tree 2-5)
 - ◉ Air excavation
 - ◉ Incorporation of compost
 - ◉ Mulch
- ◉ Watering (by Forestry staff, possibly volunteers)

Contract Awarded

- ◉ Dead wood pruning performed in November
- ◉ Soil samples taken
 - ◉ Low N
 - ◉ Low C
- ◉ Bulk density samples collected by Forestry
 - ◉ Ideal 1.1-1.4 g/cc³
 - ◉ Compaction in areas formerly covered with pavement/house, as expected

Air Excavation, Compost Amendment, Watering

- Air excavation occurred in December
- Forestry staff watered each tree immediately after it was air excavated
- Follow-up Water Plan
 - Duration 6-12 months
 - Equivalent of 1" per month
 - Complies with Water Conservation Rules
- Future Water Plan
 - Transition to automated (once no freeze risk)
 - Transition to volunteer-led watering













Questions?