

General Grounds Improvements for Barton Springs Pool

Austin, Texas

Waterfront Planning Advisory Board

February 11, 2013



Larson Burns & Smith

Landscape Architects / Planners

Stansberry Engineering

Civil Engineers

Saenz + Bury

MEP Engineers

Frank Lam & Associates

Structural Engineers

Background

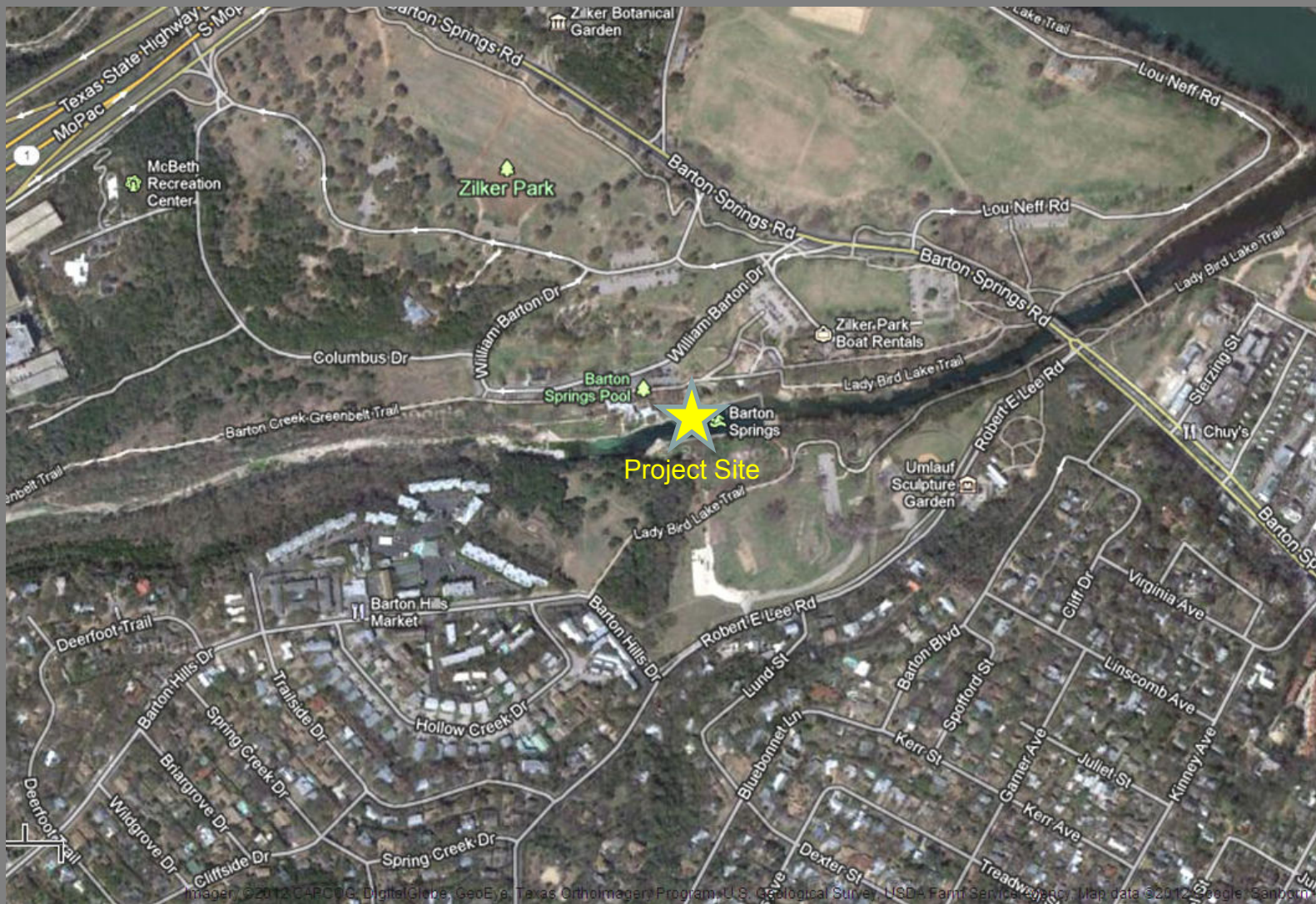
- The City of Austin in conjunction with the Parks and Recreation Department has commissioned and approved the Barton Springs Pool Master Plan.
- The Barton Springs Pool Master Plan called for various improvements to the overall pool area including water quality and salamander habitat improvements, **grounds improvements**, as well as infrastructure and facility improvements.

Design Phase

- The LBS Team worked with the neighborhood community as well as the Barton Springs Pool Master Plan Joint Committee for design feedback.
- The LBS Team provided presentations for discussion of incremental design tasks to the neighborhood community and Joint Committee.

Meetings were conducted for each of the following Design Tasks:

- Design Framework Plan & Preliminary Plan (4 Charette Meetings)
- 30% Construction Documents
- 60% Construction Documents
- 90% Construction Documents



VICINITY MAP

Barton Springs Pool - General Grounds Improvements

SCALE
500'



LARSON
BURNS
SMITH

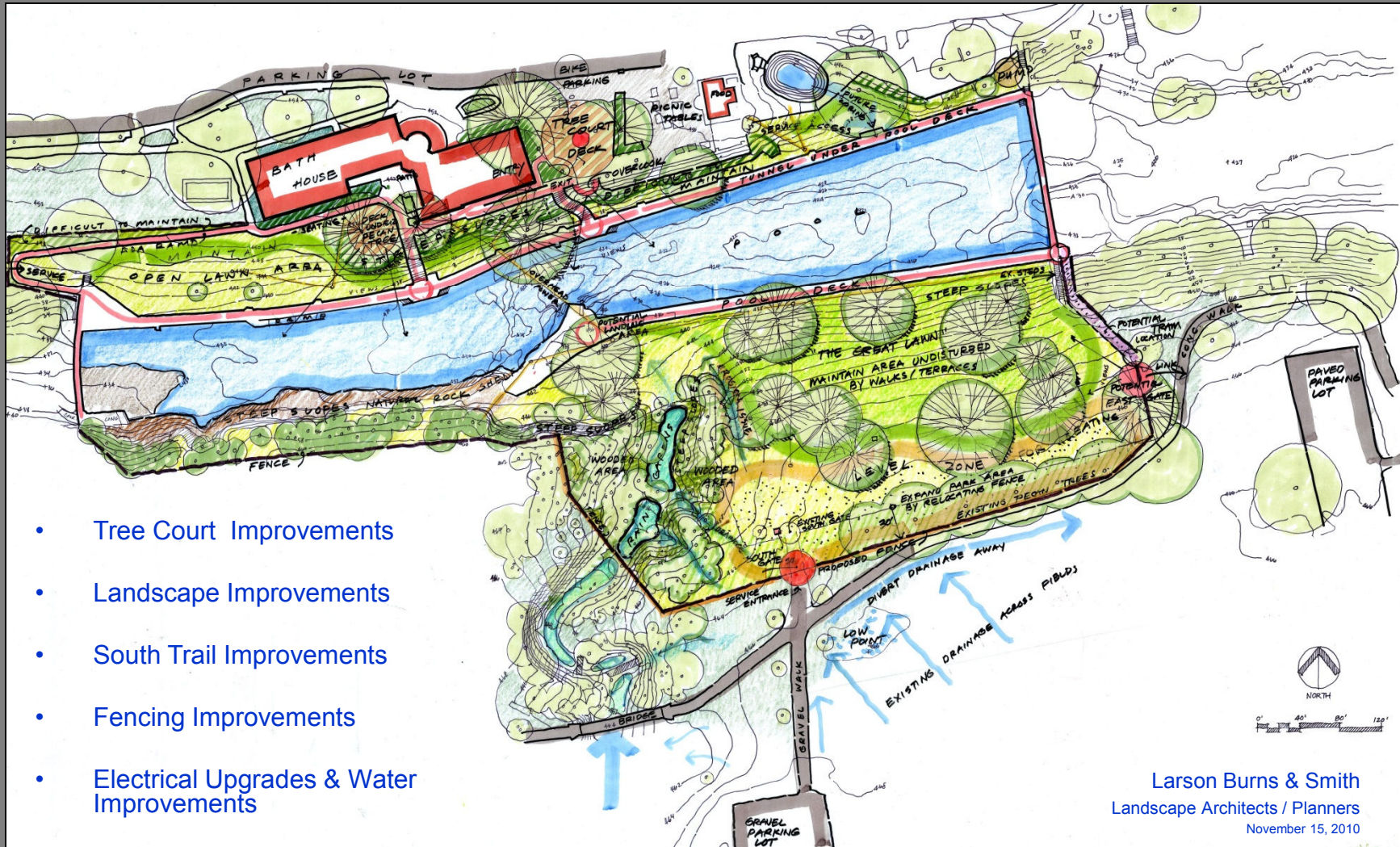
February 27, 2012



Barton Springs Pool – General Grounds Improvements – Existing Aerial View

Analysis Framework Plan

LARSON
BURNS
SMITH



Tree Court Improvements

Goals:

- *Enhance main entry court to pool.*
- *Provide improved root environment for existing Pecan Trees.*
- *Improve pedestrian walking surface and circulation.*
- *Incorporate Philosopher's Rock into new design.*
- *Provide seating and gathering areas for small groups.*
- *Provide overlook. Include interpretive signage.*
- *Maintain East - West Circulation*

Barton Springs Master Plan, page 137:

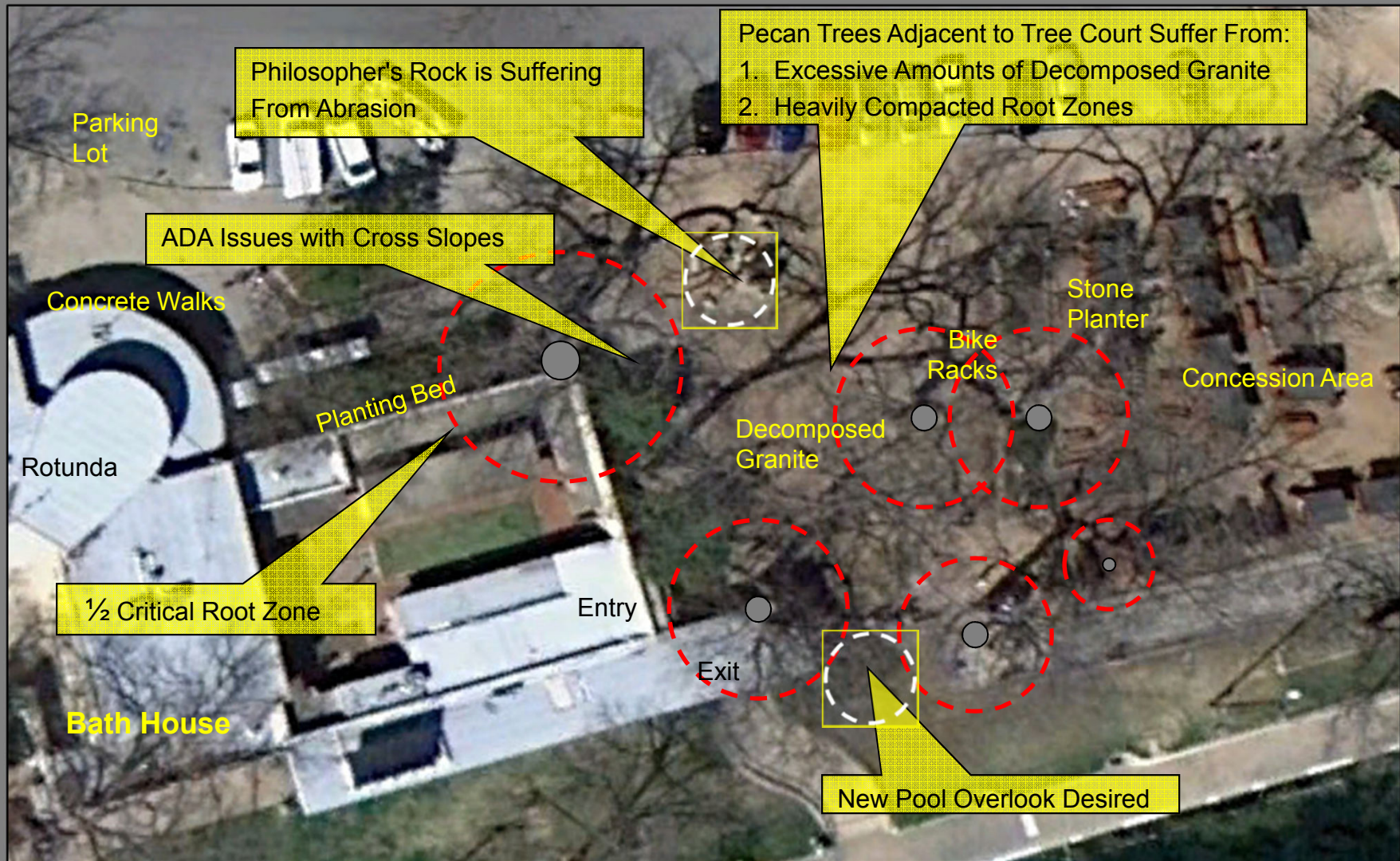
"For most visitors, the Tree Court is the place of introduction to the Pool. It is the most popular place for non-swimming visitors (several hundred thousand each year) to actually see the Pool and begin to understand its unique beauty and its importance in the Central Texas geography.

Every park needs a place of introduction. For Barton Springs, this is it."



Current view of the tree court

Existing Conditions Analysis Plan



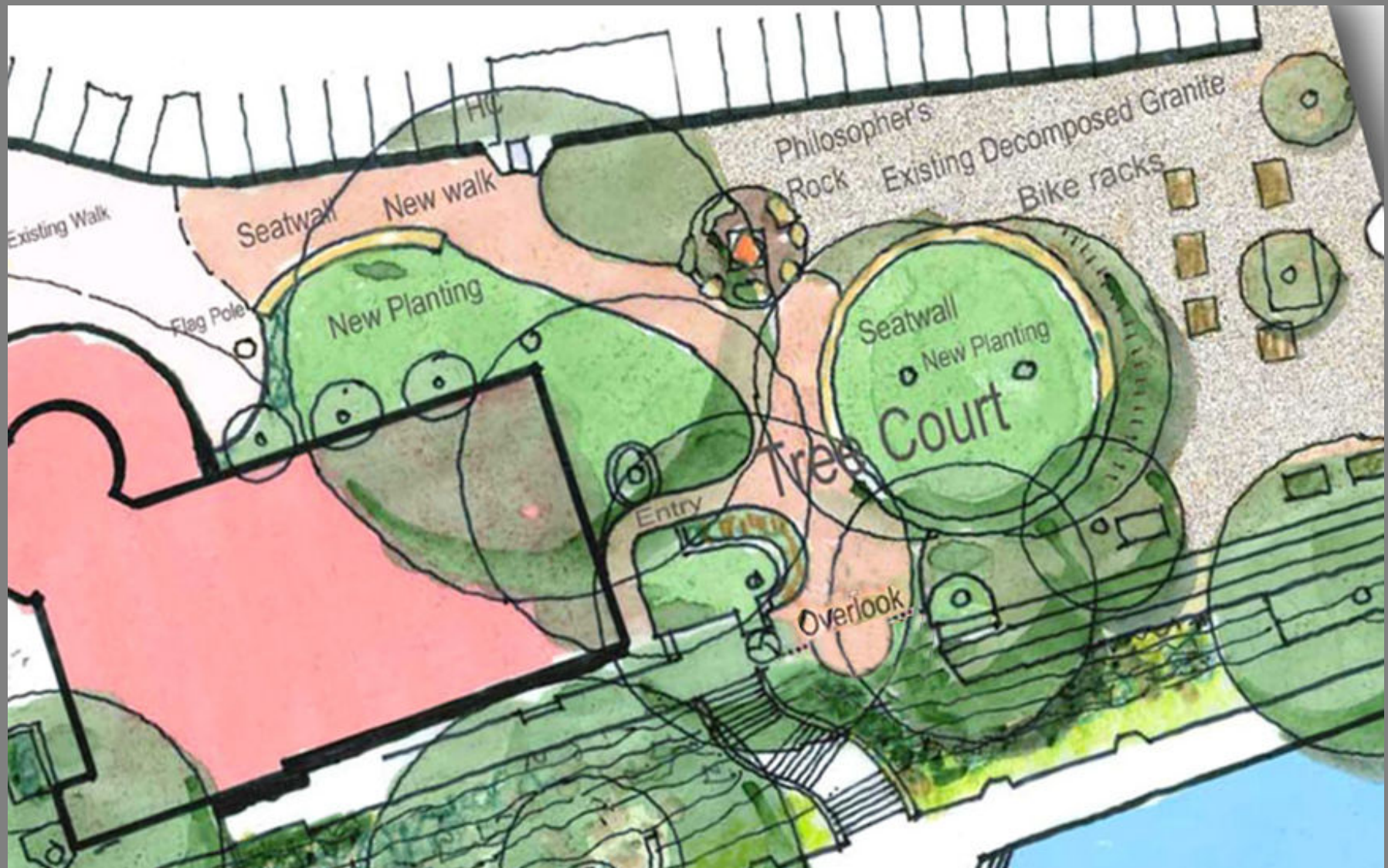
Barton Springs Pool

Tree Court Improvements



Stansberry Engineering

Proposed Improvements Plan



Barton Springs Pool

Tree Court Improvements



Stansberry Engineering



Before

Barton Springs Pool

Tree Court Improvements

Stansberry Engineering

LARSON
BURNS
SMITH



After

©

Barton Springs Pool

Tree Court Improvements

Stansberry Engineering

LARSON
BURNS
SMITH

LARSON
BURNS
SMITH



South Lawn and Trail Improvements

LARSON
BURNS
SMITH

Barton Springs Master Plan, page 147:

“South Lawn – “It extends from the diving board all the way to the eastern fence some 400 ft. In the other direction, it slopes up from the Pool deck to level ground some 30 ft. higher. The slope faces the water, and is a popular place for sunbathing and clearly visible from sight-seeing points along the northern edge of the Pool, it is on of the most enduring icons of Barton Springs.”

Because the South Lawn is such a beloved feature, care should be taken to avoid temptations to either re-imagine it or use it to solve functional problems. (Handicapped accessibility or maintenance truck accessibility come to mind.) It should be a tree-covered lawn going forward. It should not be a tree-covered lawn with access ways cutting through it.”

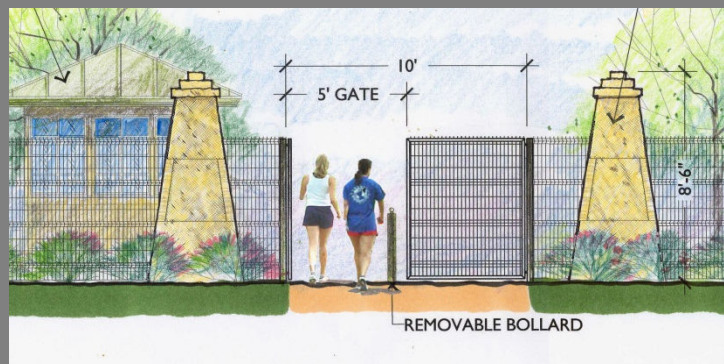




Barton Springs Pool South Entrance – South Lawn



Plan Detail South Woods and South Lawn Area



South Entry Gate & Stone Columns



Existing Stone Column at North side Entry



30' Pool Area Light



10' Pedestrian Light



Proposed Ticket Booth



Existing Ticket Booth



Pool Light Fixture Circa 1936

Barton Springs Pool South Entrance – South Lawn – Trail to Pool Deck - Lighting

Stansberry Engineering

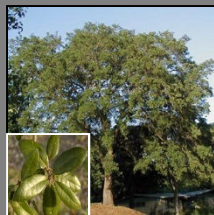
April 9, 2012

LARSON
BURNS
SMITH

Canopy and Ornamental Trees



Bald Cypress



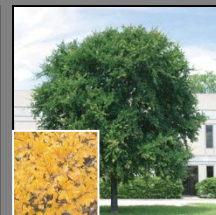
Live Oak



Chinquapin Oak



Native Pecan



Cedar Elm



Yaupon Holly



Texas Redbud



Flame Sumac

Shrubs & Groundcovers



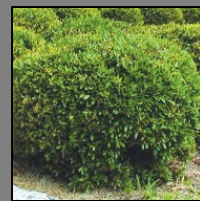
Big Muhly Grass



Red Yucca



Evergreen Sumac



Dwarf Yaupon Holly



Turk's Cap



Gulf Muhly Grass



Pride of Barbados



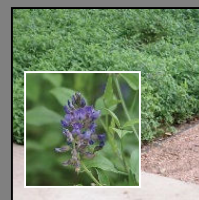
Cedar Sage



Bicolor Iris



Soft Leaf Yucca



Mountain Pea



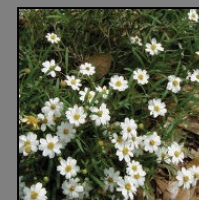
Silver Ponyfoot



Inland Sea Oats



Four Nerve Daisy



Blackfoot Daisy



Pink Skullcap

Turf Grass

St. Augustine

Cavalier Zoysia

Native Grass Seed Mix

Buffalo Grass

Eastern Grama Grass

Green Sprangletop

Prairie Wildrye

Switchgrass

Little Bluestem

Blue Grama

Sideoats Grama

Curly Mesquite

Indiangrass

Texas Cupgrass

Sand Dropseed

Sand Lovegrass

Big Bluestem

Bushy Bluestem

Cane Bluestem

White Tridens

Western Wheatgrass

Barton Springs Pool

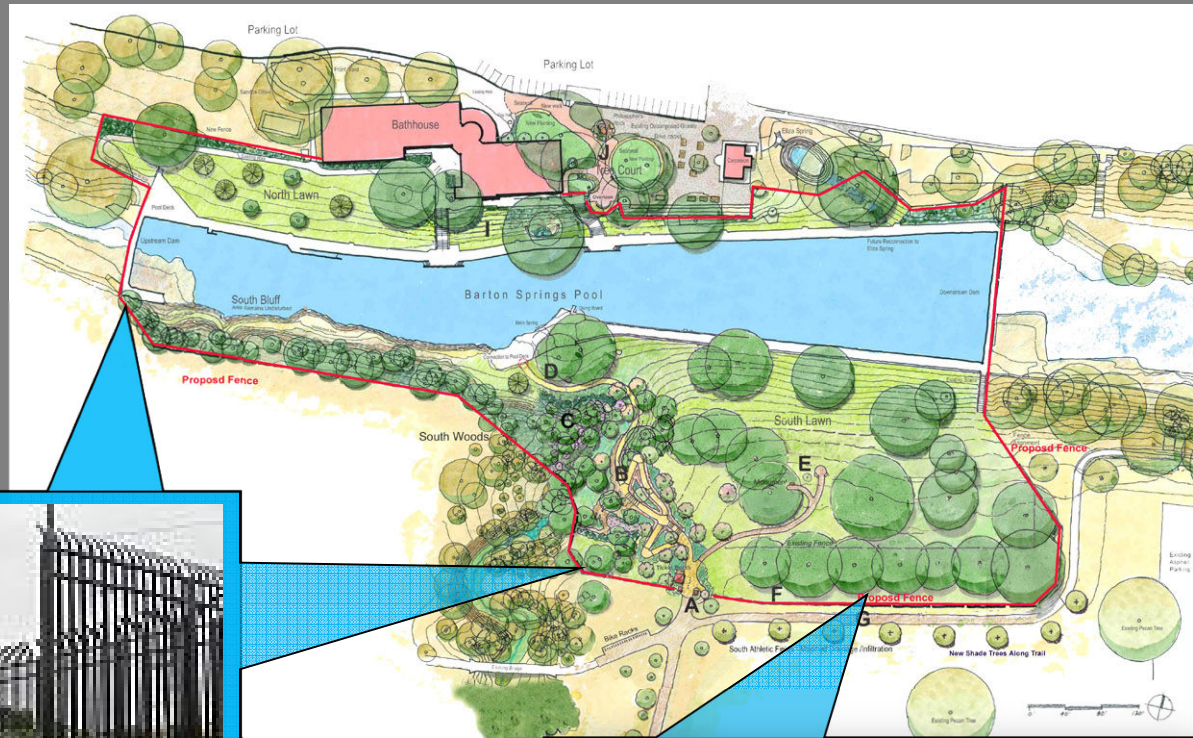
Native & Adapted Plant Palette



Stansberry Engineering

Barton Springs Pool Master Plan, page 120

Recommends wire mesh fence to replace chain link. "This kind of fencing offers the transparency of chain link, in a stronger, more attractive fence that is still affordable."



Proposed Steel Picket
South Woods Only
Height - 8' ht.

Proposed Steel Mesh Fence
Height Varies:
4' ht. Removable at both dams,
6' ht. All Remaining Areas.



Barton Springs Pool Proposed Perimeter Fence



A. South Entry Gate

See Options below for South Entry Gate
New Ticket Booth
New Bike Parking

B. Combined ADA Path and Steps

Access to Pool Deck
5' Wide Warm Tone Concrete with Handrails
Accented with Limestone
Weathered Limestone Boulders along Path

C. South Woods

Plant Native Vegetation on Slopes and Drainage Way

D. Connection to Pool Deck

Access to Pool Deck and South Lawn Area

E. Overlook Area

Decomposed Granite (D.G.) Pathway to Overlook
Access to South Lawn Area
Access to Historic Monument
Seating Provided

F. New Ornamental Perimeter Fence

G. Relocated D. G. Trail

H. South Parking Lot

Accessible Parking Spaces Provided in Base Bid
Expanded Concrete Paved Lot Provided in Add Alternate Bid
Pathway Connection Provided to Robert E. Lee

I. Planting on Slope

Planted with Native Vegetation

J. Tree Court

A Portion of the Walkway is Elevated over Existing Pecan Tree Root Zone
Overlook Area
Informal Seating
Native Plantings

General Grounds Improvements

1. Tree Court
2. South Trail
3. Landscape
4. Perimeter Fencing
5. Electrical Upgrades and Water
6. South Parking Lot

August 13, 2012

Stansberry Engineering



Accumulation of Committees, Boards and Commissions

Barton Springs Pool – General Grounds Improvements

Design Commission Meeting - February 27, 2012

The motion to support both items of Alternative Equivalent Compliance as requested and send a message to the public of the importance of preserving our natural springs was approved.

Joint Committee Meeting - June 28, 2012

All aspects of the design were approved by the Joint Committee of the Environmental Board and Parks and Recreation Board over a two-year public engagement process.

Land, Facilities and Program Committee Meeting - August 13, 2012

The motion to Recommend the plan to the Parks and Recreation Board was approved.

Historic Landmark Commission Meeting - August 27, 2012

The motion to approve the Certificate of Appropriateness in accordance with Staff recommendation was approved.

Parks and Recreation Board Meeting - August 28, 2012

The motion to approve the plan was approved with the following exceptions:

1. *ADA Trail through the grass of the South Lawn and request planner and Parks Department Staff look closer at a place for that overlook away from the South Lawn.*

Urban Forestry Board Meeting - December 19, 2012

The motion to approve the plan was approved with the following recommendations:

1. *Tree Court Area:*
 - a. *The entire tree court area is treated as a Critical Root Zone;*
 - b. *Decomposed granite is removed from root zone areas and under walks to native grade;*
 - c. *Piers for the suspended walk are excavated with an air excavation tool for the first 2';*
 - d. *Soil beneath the suspended walk is de-compacted after piers are poured;*
 - e. *An approved Certified Arborist or appropriate city staff be present during construction.*
2. *Remove the south overlook and pathway to the overlook from the plan.*
3. *Increase size of planting median in south parking lot area to 4000 SF and reduce the large maturing trees in the planting to two trees.*

Planning Commission Meeting – January 8, 2013

Initiation of SOS Ordinance Amendment.

Codes and Ordinances Subcommittee – January 15, 2013

Introduction of variance language. Discussion postponed to February 19, 2013

Environmental Board Meeting – February 6, 2013

Motion to Postpone was approved