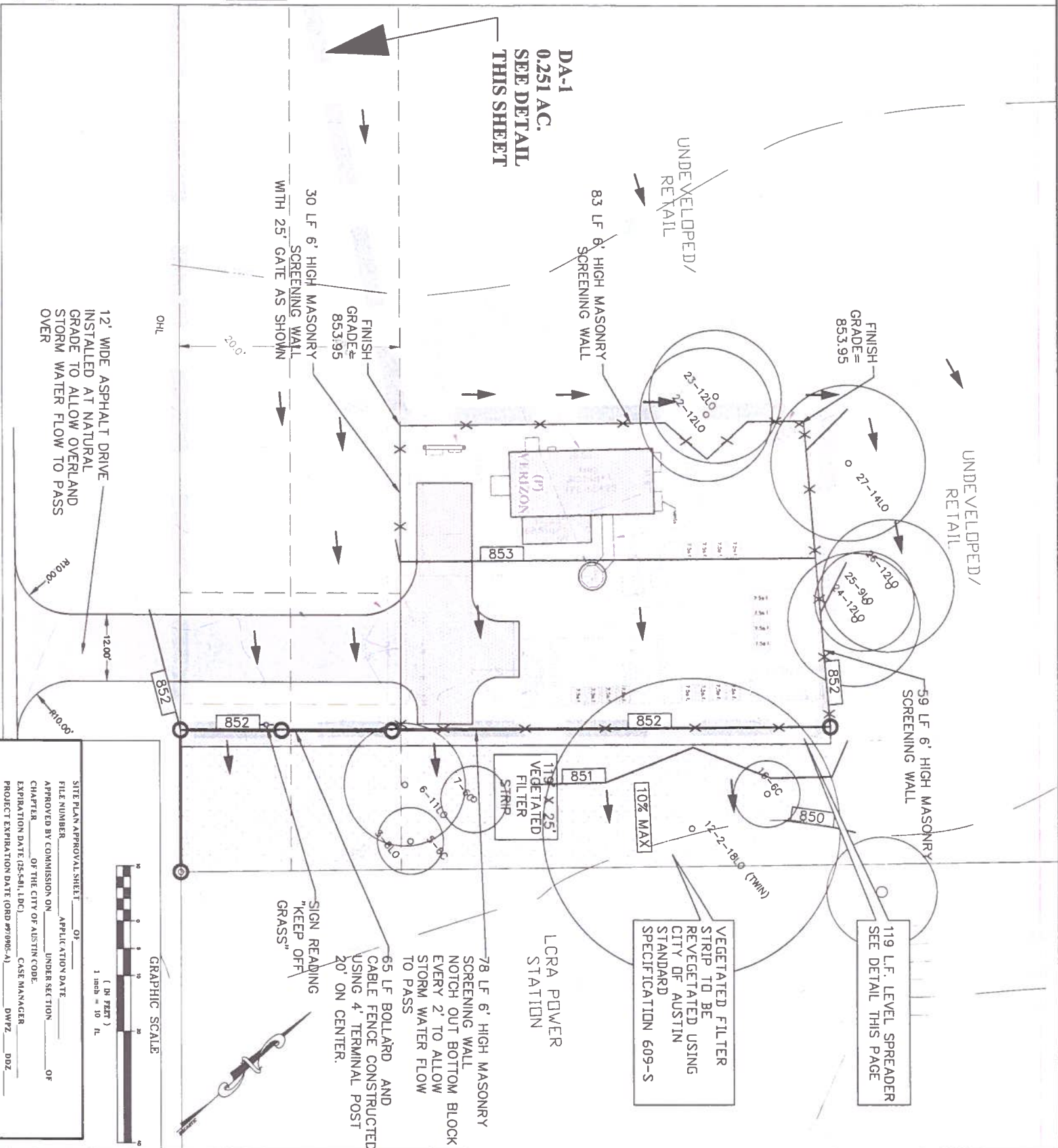


Runoff Coefficients							
Rational Method Drainage Calculations							
No.	Area	Impervious Cover	Pervious Cover	Weighted Average Runoff Coefficient	C10	C25	C100
	Ac	area (Ac)	Area (Ac)	C2	C10	C25	C100
DA-1-EX	0.251	0.0000	0.2510	0.37	0.43	0.46	0.53
DA-1-DEV	0.251	0.0363	0.2147	0.42	0.48	0.52	0.59

Did it Kill Rate Rise than 0.5 CPS per Foot? Yes
Aaa's Little Sister Greater than Treated by the Appropriate SOS Ratio? Yes
Length of Fire Ship Equal to or Greater Than 25 Foot Minimum? No
Does it Have City of Austin Contract? Yes
Does it Increase in Area due to development of this site less than 0.5 CPS in the 2 years after the requirement for 0.75 sq ft from a met

SURFACE TREATMENT LEGEND

PERVIOUS NON-COMPACTED WASHED RIVER GRAVEL	1.582 SQ. FT.
---	----------------------



PREPARED FOR:	SCALE:
	DATE:
	DRAWN BY:
	PROJECT MANAGER- VINCENT G. HUEBINGER