

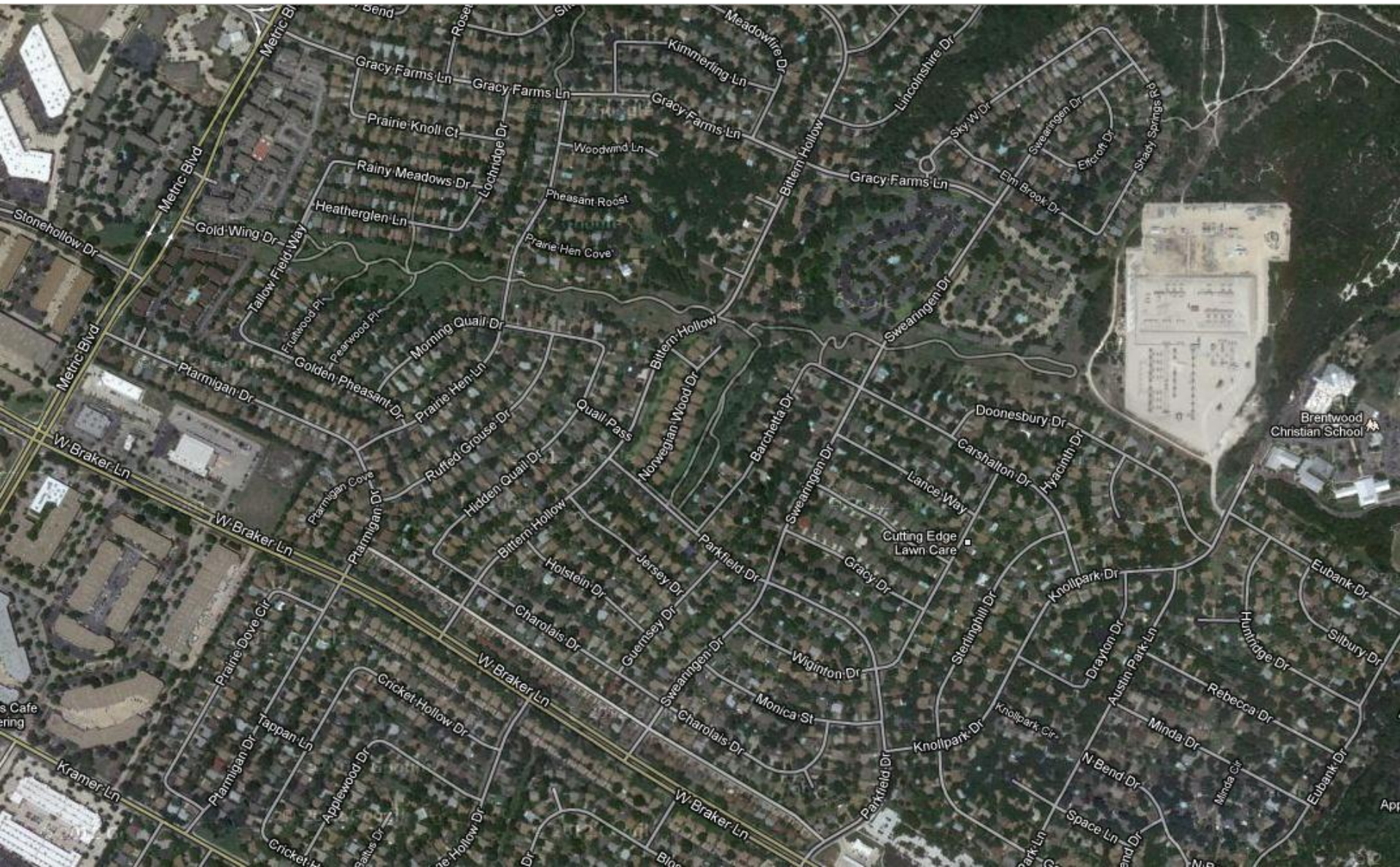
Images of Transmission Lines and Live Oak Trees in the Gracywoods Neighborhood Area of North Austin

Urban Forestry Board Meeting

March 20, 2013

Austin, Texas

Overhead View of Area with Greenbelt, Transmission Lines, and Substation



Two Lattice Support Structures for 138 kV Transmission Lines



Lattice Structure
for 138 kV
Transmission Lines
Located East of
Swearingen Drive



Transmission
Line Support
Poles Located
North of Braker Lane
Between IH-35 and
North Lamar



Aerial View of Live Oaks West of Swearingen Drive with Least Overhead Clearance to 138 kV Lines



Ground View of Live Oaks West of Swearingen Drive with Least Overhead Clearance to 138 kV Lines



Closeup Views of
Live Oak Sprouts
Close to 138 kV
Transmission Lines
Needing Pruning





