

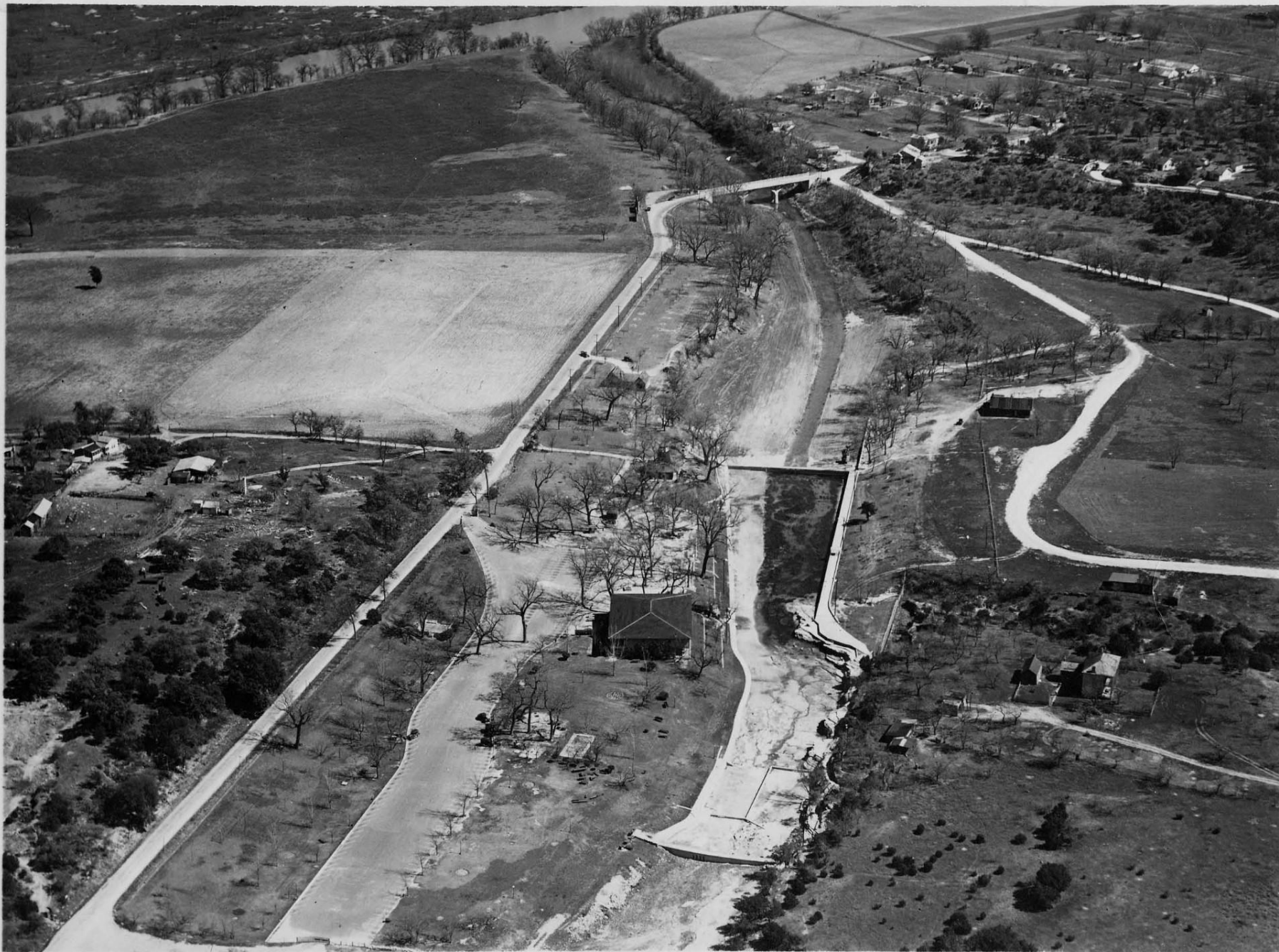
A photograph of Barton Springs Pool, showing a large body of water with a concrete deck and stairs on the left, surrounded by lush green trees and foliage. The image is slightly faded to allow text to be overlaid.

Barton Springs Pool

General Grounds Improvements



Photo
JORDAN Co.
Austin, Texas.
887



PICA 01036, Austin History Center, Austin Public Library















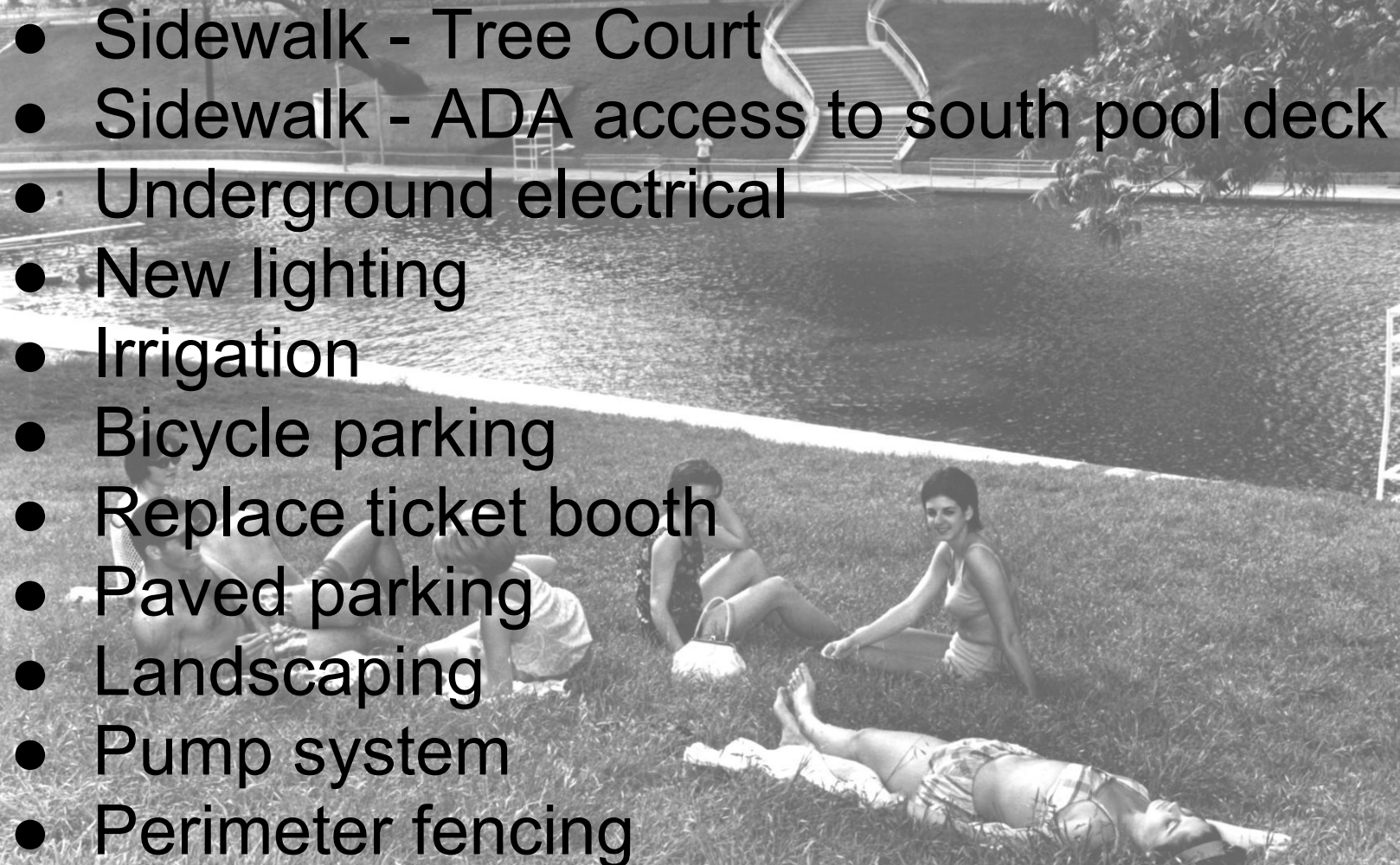


Design/Stakeholder Process

- 2006-2009 Master Plan process identified improvement projects
- Four Design Charrettes in 2010 prior to preliminary design
- Over 40 public input meetings
- Stakeholder surveys
- Multiple presentations to Joint Parks/Environmental Board Committee with stakeholder input
- All aspects of plan approved by Joint Committee
- **Current plan considered all comments and is a product of the process**



General Grounds Improvements

- Sidewalk - Tree Court
 - Sidewalk - ADA access to south pool deck
 - Underground electrical
 - New lighting
 - Irrigation
 - Bicycle parking
 - Replace ticket booth
 - Paved parking
 - Landscaping
 - Pump system
 - Perimeter fencing
- 
- A black and white photograph of a park scene. In the foreground, a grassy slope with several people sitting and lying down. In the background, a swimming pool with a lifeguard stand, a building, and trees.

Amendment to 25-8-514

(Pollution Prevention Required)

To allow construction of:

- Concrete ADA walkway to south pool deck
- Underground irrigation & electric
- Ticket booth at south entry
- Tree Court hardscape
- Water quality control for paved parking lot on south side

Variance to 25-8-482

(Critical Water Quality Zone)

To allow construction of:

- Concrete ADA walkway to south pool deck
- Underground irrigation & electric
- Ticket booth at south entry
- Tree Court hardscape
- Water quality control for paved parking lot on south side

EXHIBIT A - South Sidewalk Improvements

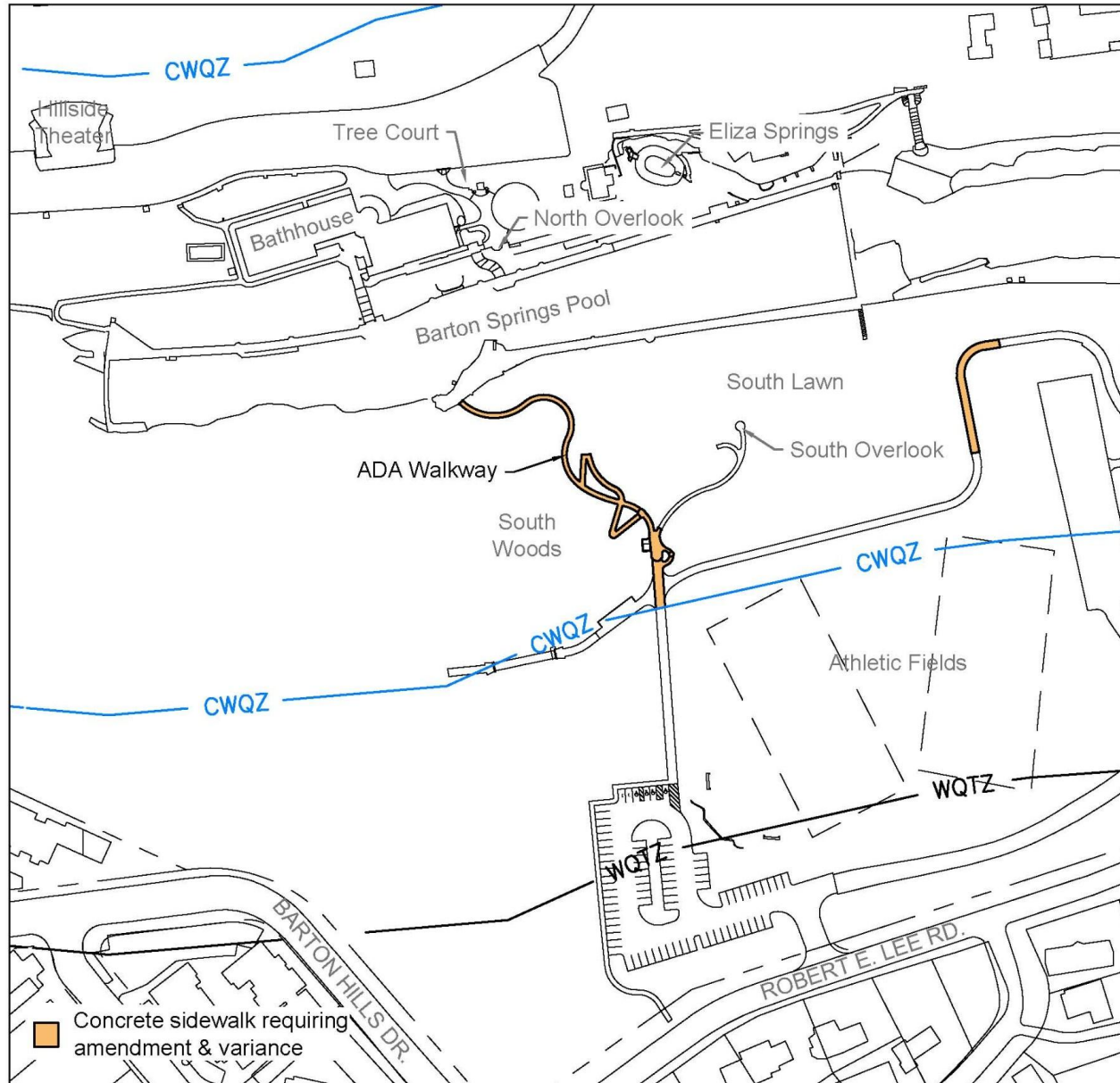


EXHIBIT B - Irrigation and Electrical Improvements



EXHIBIT C - South Gate Ticket Booth

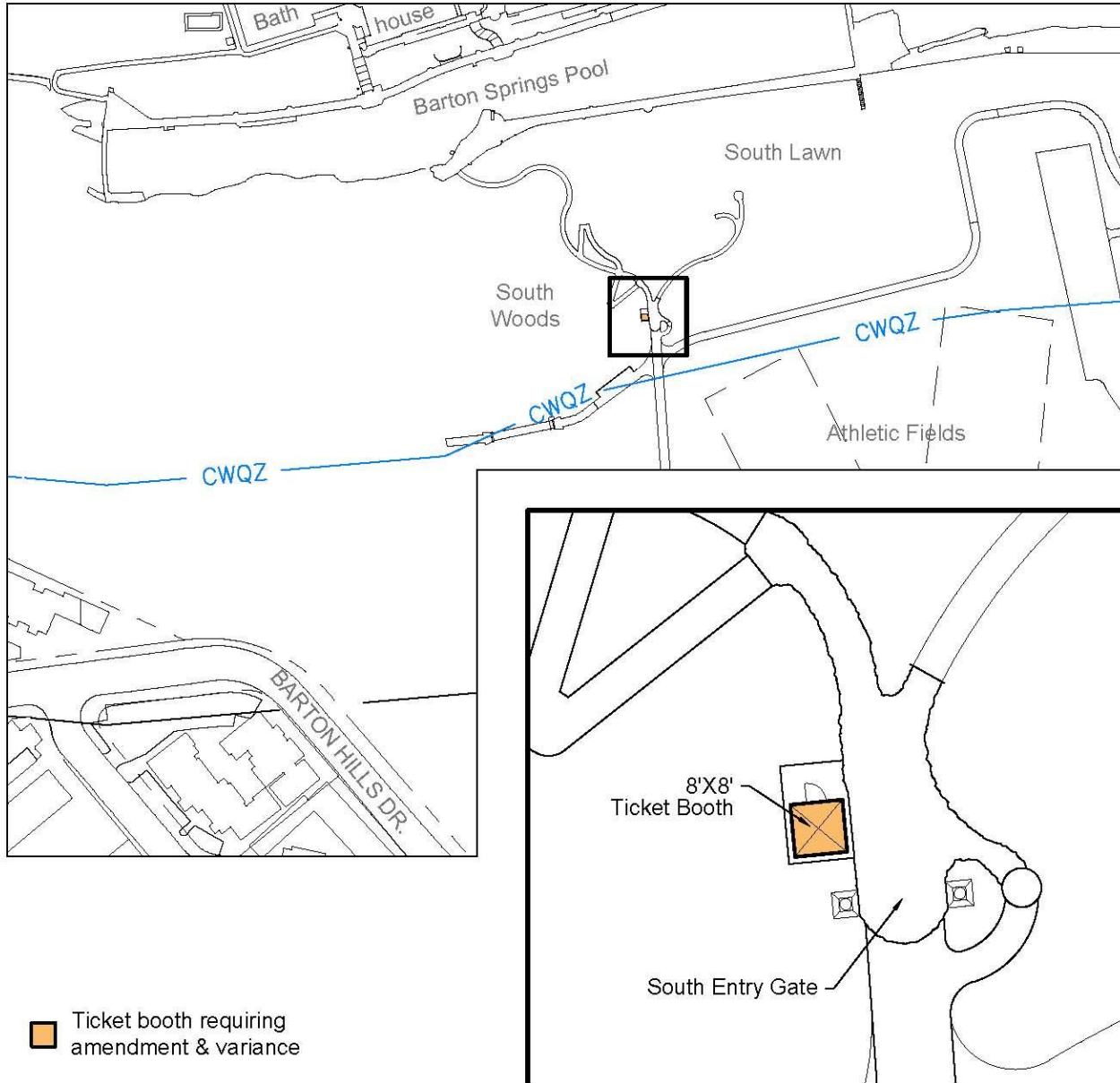


EXHIBIT D - Tree Court Improvements

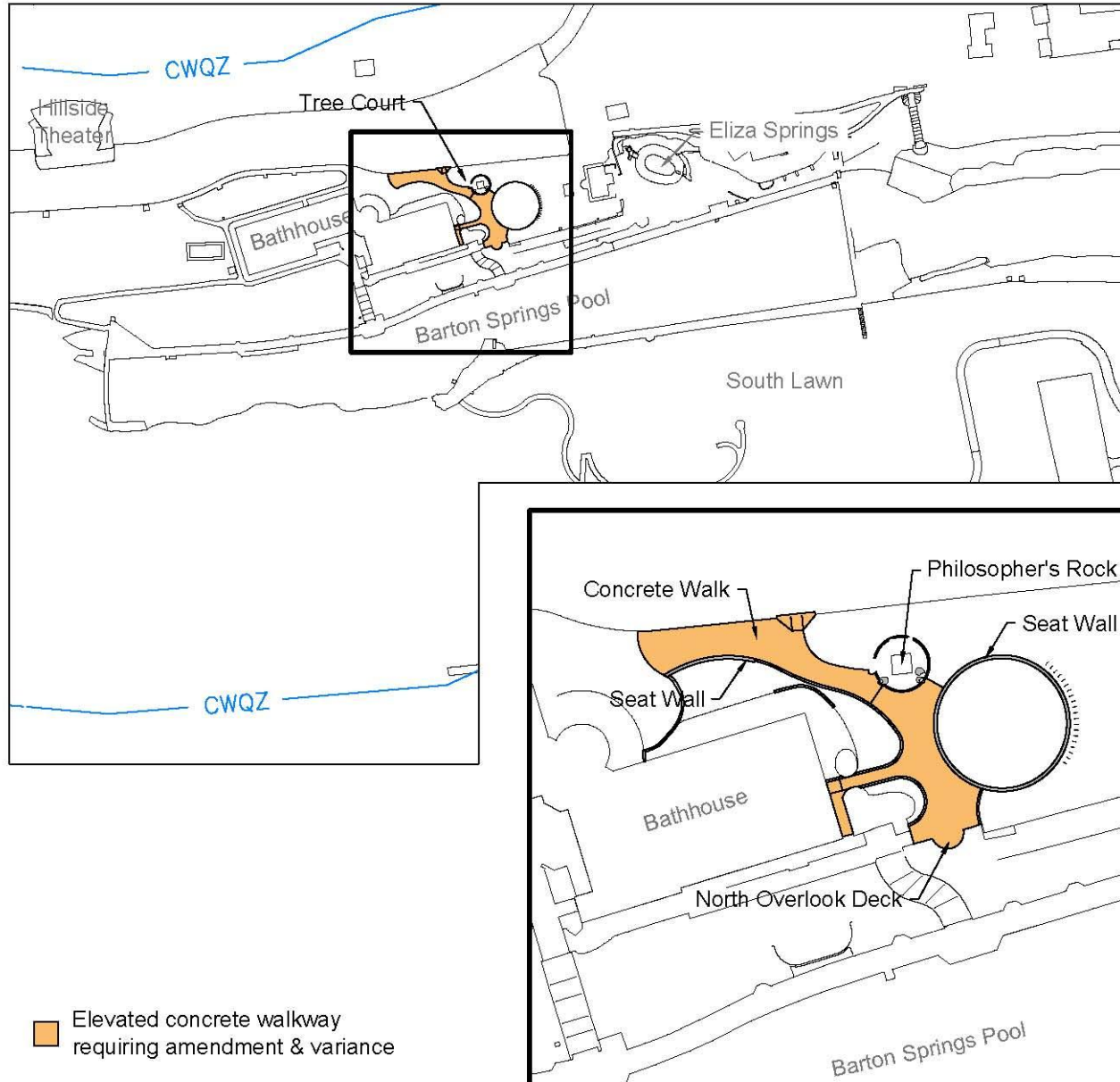
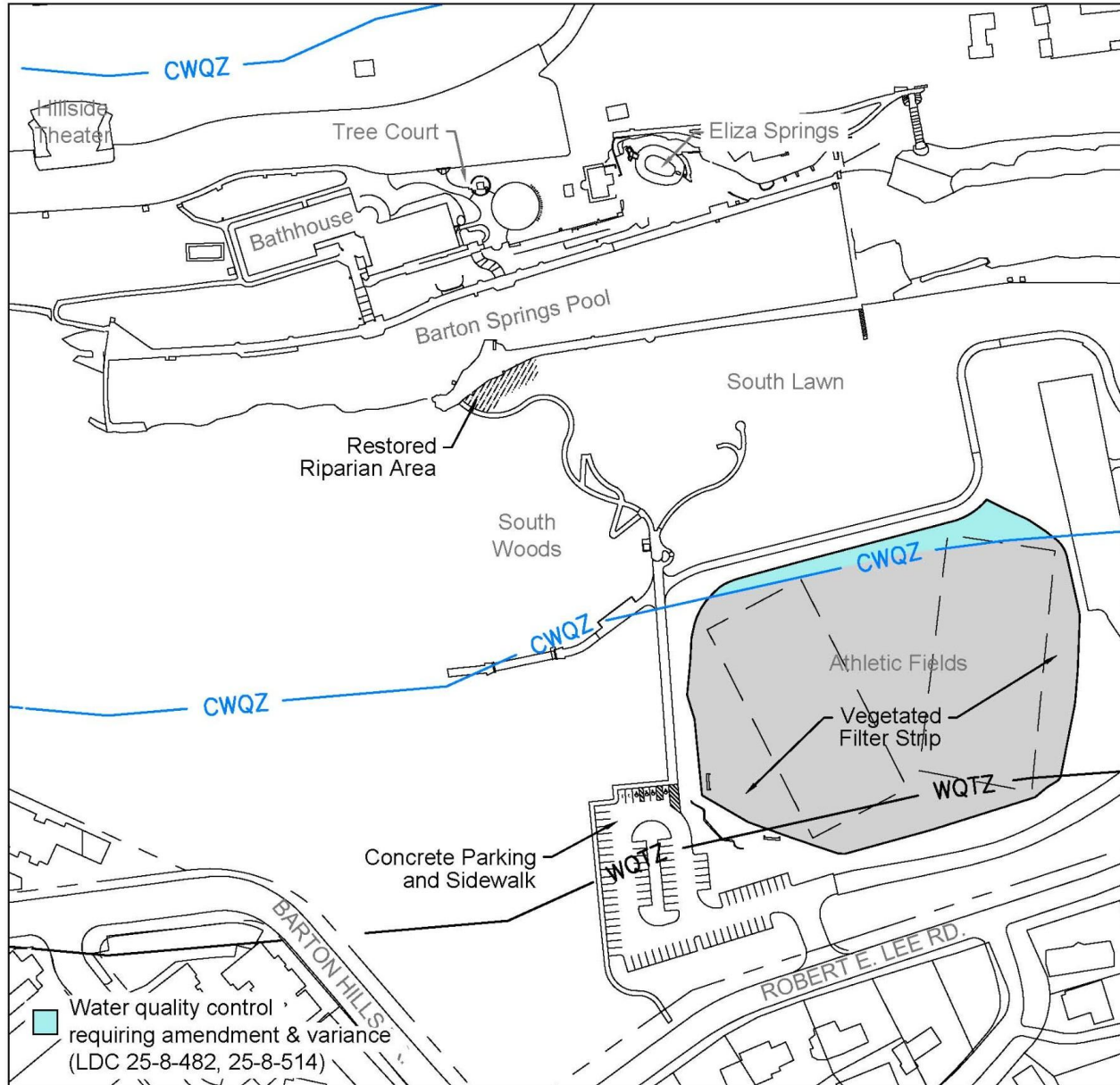


EXHIBIT E - South Entry Parking Lot and Water Quality Improvements



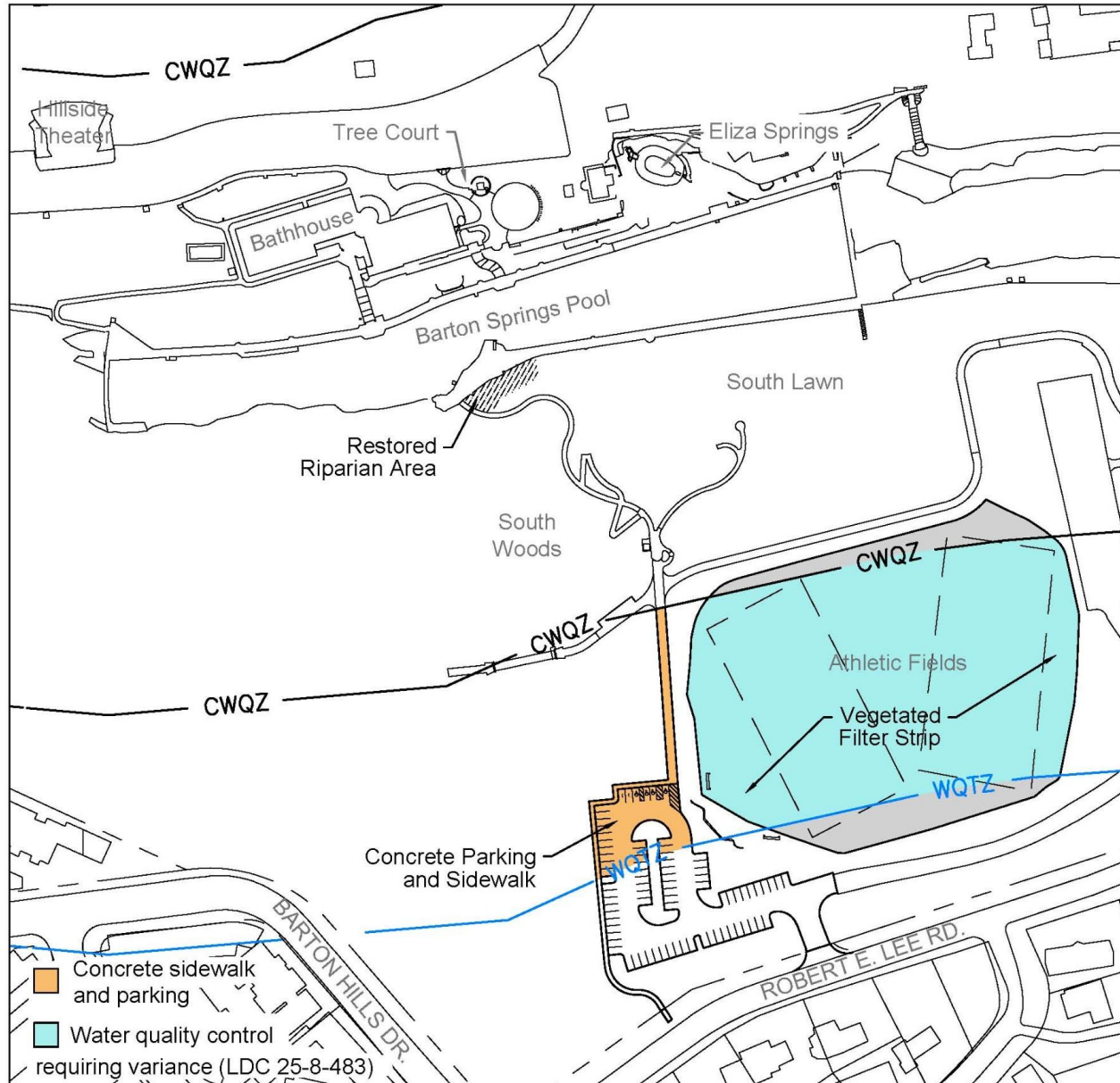
Variance to 25-8-483

(Water Quality Transition Zone)

To allow construction of:

- Concrete ADA walkway
- Concrete parking
- Water quality control for paved parking lot on south side

EXHIBIT E - South Entry Parking Lot and Water Quality Improvements

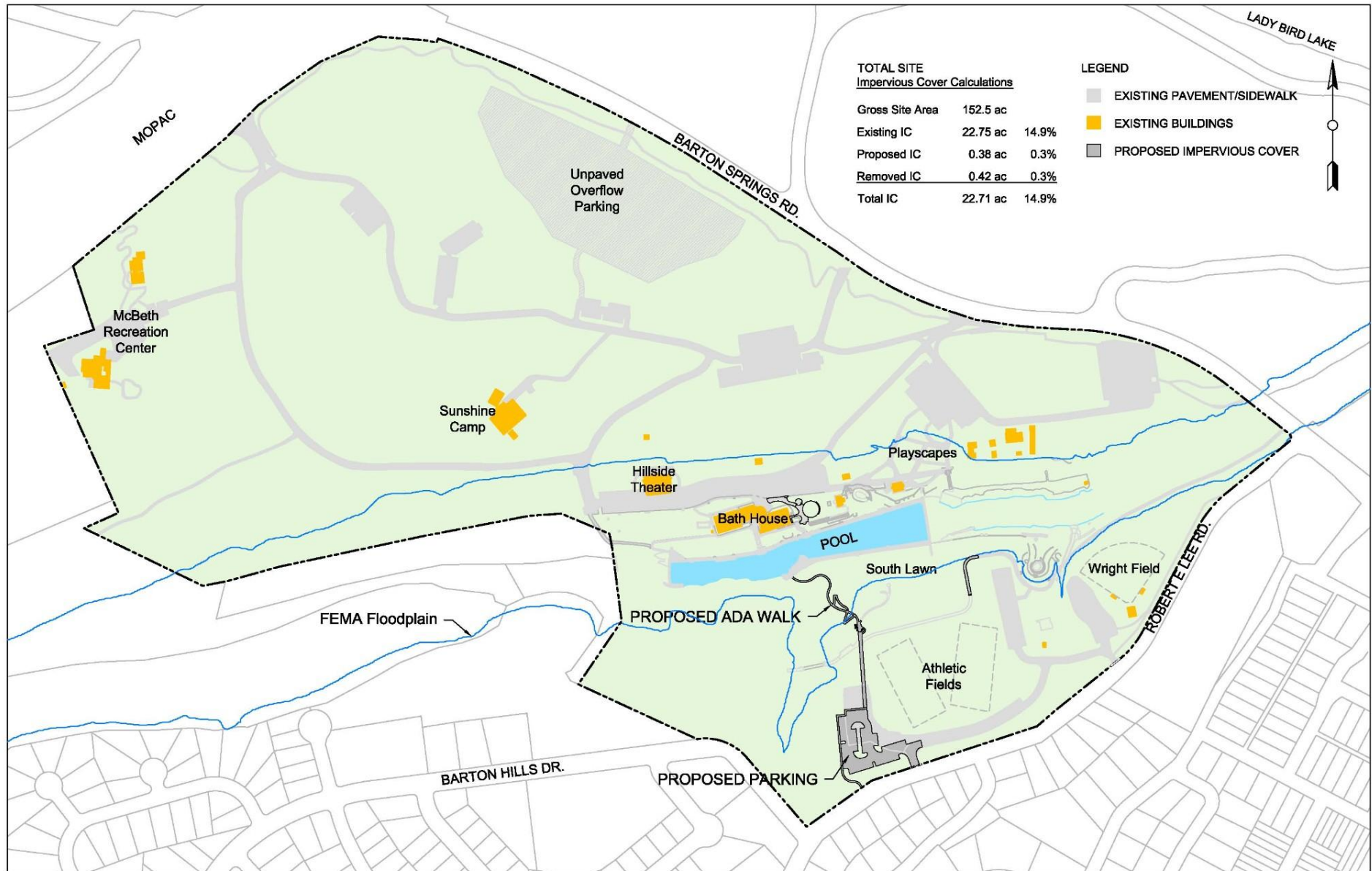


Amendment to 25-8-514

(Pollution Prevention Required)

SOS Initiative prohibits impervious cover in excess of 15% net site area in Barton Springs Zone

- Existing impervious cover in Barton Springs Zone of Zilker Park is 48%
- **Project decreases existing impervious cover by 1,600 sq. ft., (0.10%)**

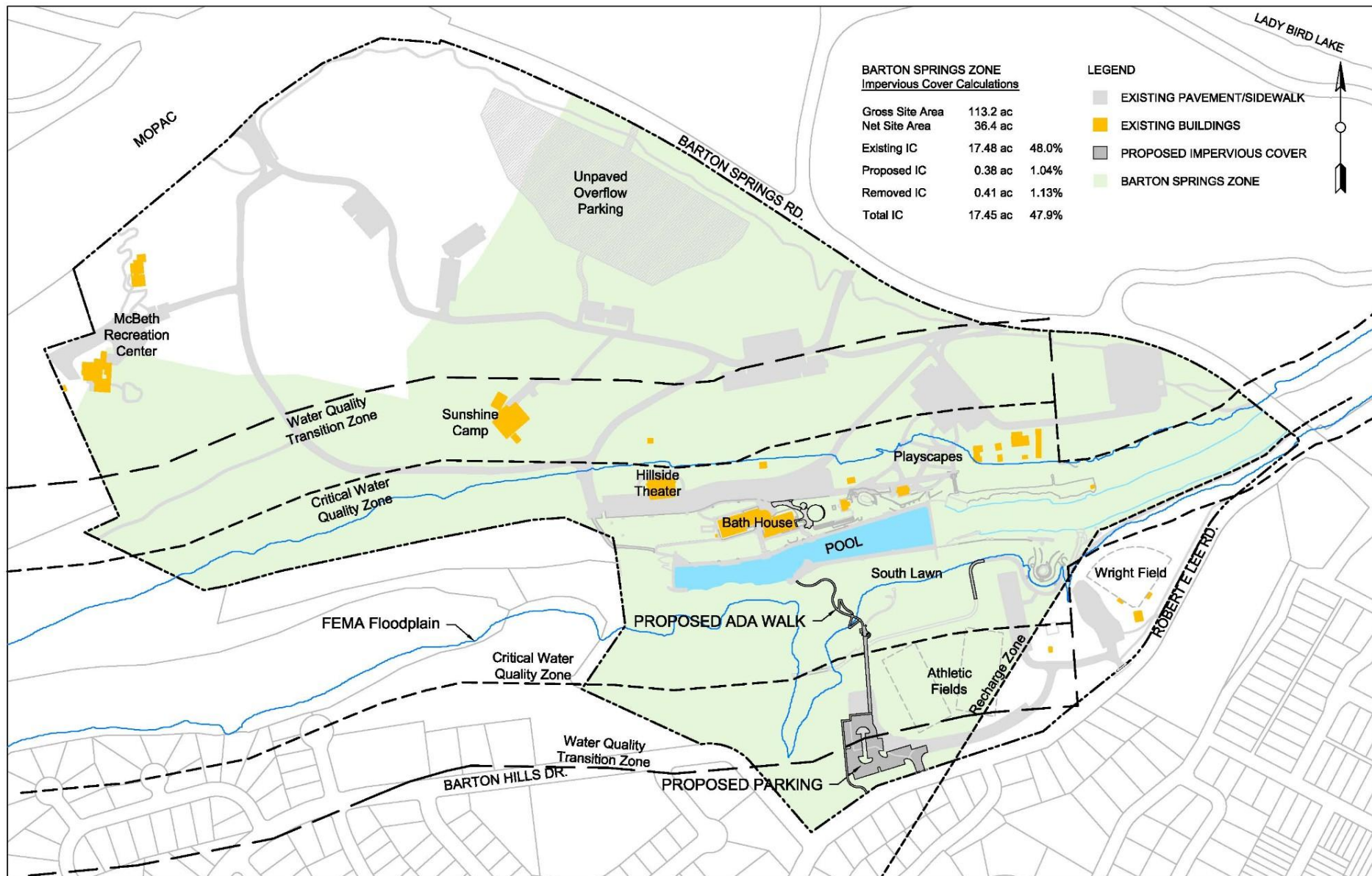


TOTAL SITE
Impervious Cover Calculations

Gross Site Area	152.5 ac	
Existing IC	22.75 ac	14.9%
Proposed IC	0.38 ac	0.3%
Removed IC	0.42 ac	0.3%
Total IC	22.71 ac	14.9%

LEGEND

- EXISTING PAVEMENT/SIDEWALK
- EXISTING BUILDINGS
- PROPOSED IMPERVIOUS COVER



Ordinance Conditions

- Remove existing impervious cover to result in "no net increase" in the Barton Springs Zone
- Maintain water quality control per maintenance agreement
- Provide 2,000 sq. ft. of restored riparian area upstream of the main spring
- Provide increased bicycle parking
- Provide 15,000 sq. ft. of additional landscape area using native plants

South Overlook Trail

- Decomposed granite
- Provides accessibility to an "experience" (historical marker and view of pool)
- Controlled path to direct users to south lawn important to prevent erosion and tree root compaction

BARTON SPRINGS BATHING POOL
AUSTIN, TEXAS

PHOTO
ELLISON
- Austin

South Overlook Trail

- **Variance or ordinance amendment not required**
- Layout has gone through stakeholder process with both support and opposition
- Same site plan presented to all Boards and Commissions
- Recommendations are provided
- 6 of 11 Committees, Boards, or Commissions recommended approval
- 5 of 11 recommended removal

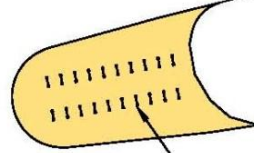






BICYCLE PARKING

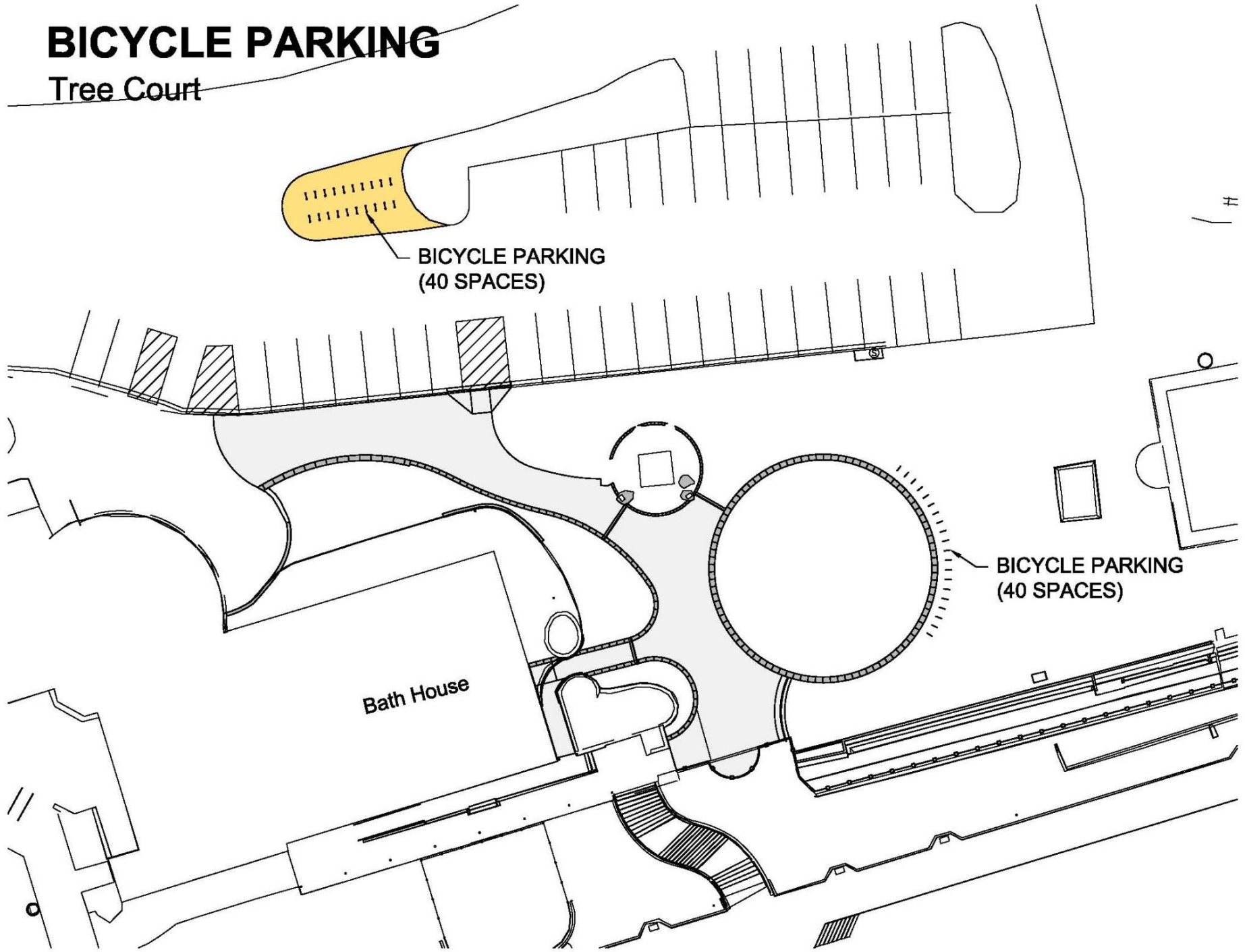
Tree Court



BICYCLE PARKING
(40 SPACES)

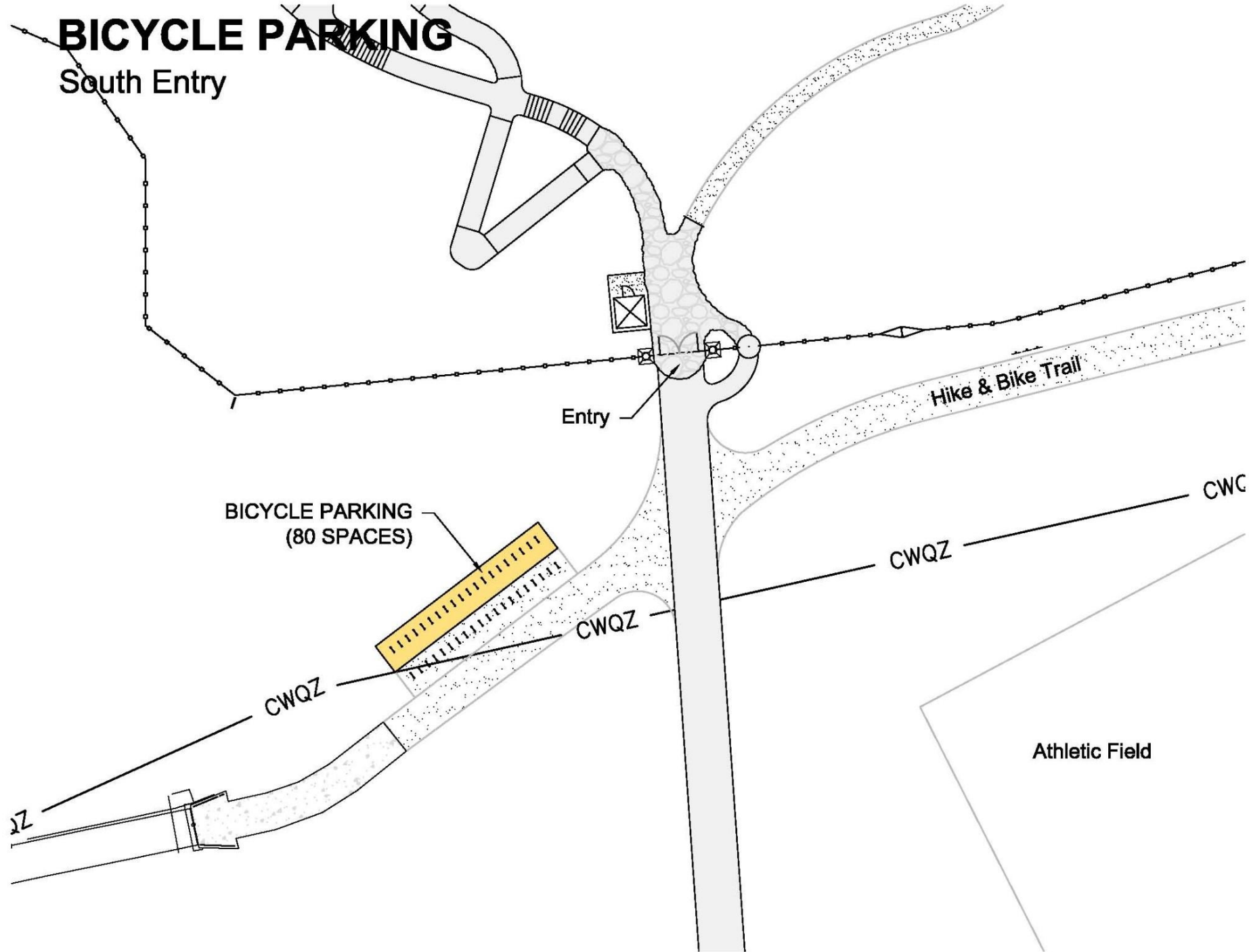
BICYCLE PARKING
(40 SPACES)

Bath House



BICYCLE PARKING

South Entry



Parking Lot Paving

- Existing gravel parking lot does not meet current code
- Stormwater runoff and dust issues
- Multiple options considered as part of stakeholder process
- 124 space parking lot selected by the Joint Parks/Environmental Board Committee

A site plan diagram showing a gravel parking lot, athletic fields, a water quality transition zone, and Robert E. Lee Rd. The parking lot is a large, irregularly shaped area filled with a stippled pattern. It is located to the left of the athletic fields. The athletic fields are a large, open area to the right of the parking lot. A dashed line separates the parking lot from the athletic fields, and another dashed line separates the athletic fields from the water quality transition zone. The water quality transition zone is a narrow, irregularly shaped area located between the athletic fields and Robert E. Lee Rd. Robert E. Lee Rd. is a road that runs diagonally across the bottom of the diagram. A dashed line runs parallel to the road, and a solid line runs parallel to the road, both indicating the road's boundaries. The road is labeled 'ROBERT E. LEE RD.' in a bold, sans-serif font. The parking lot is labeled 'Gravel Parking Lot' in a bold, sans-serif font. The athletic fields are labeled 'Athletic Fields' in a bold, sans-serif font. The water quality transition zone is labeled 'Water Quality Transition Zone' in a bold, sans-serif font, with the text underlined. The diagram also shows some utility lines, including a water line with a valve and a sewer line with a manhole, both located near the parking lot. The overall layout is a plan view of a site, likely for a school or sports facility.

Athletic Fields

Gravel
Parking Lot

Water Quality Transition Zone

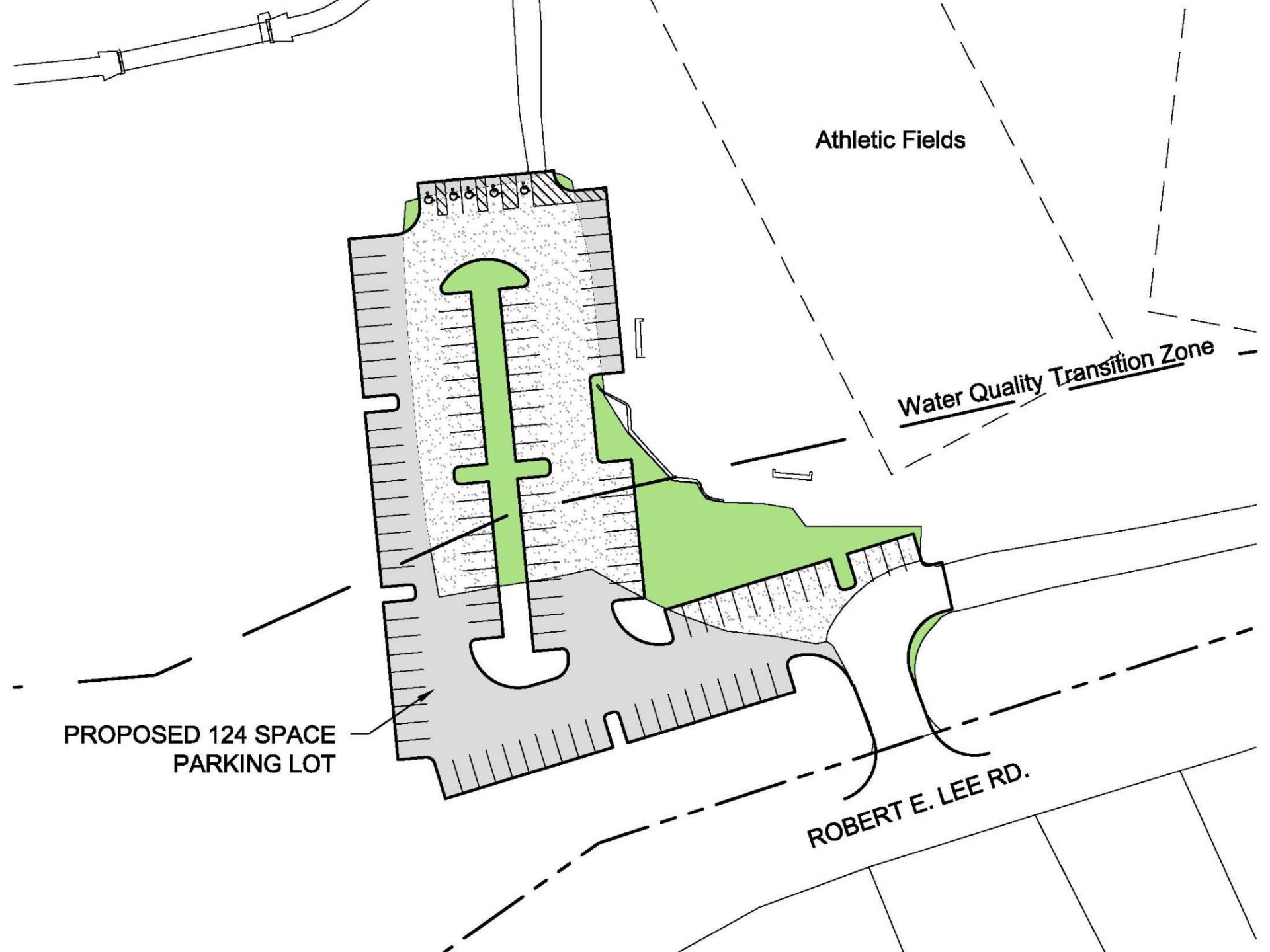
ROBERT E. LEE RD.

Athletic Fields

Water Quality Transition Zone

PROPOSED 124 SPACE
PARKING LOT

ROBERT E. LEE RD.

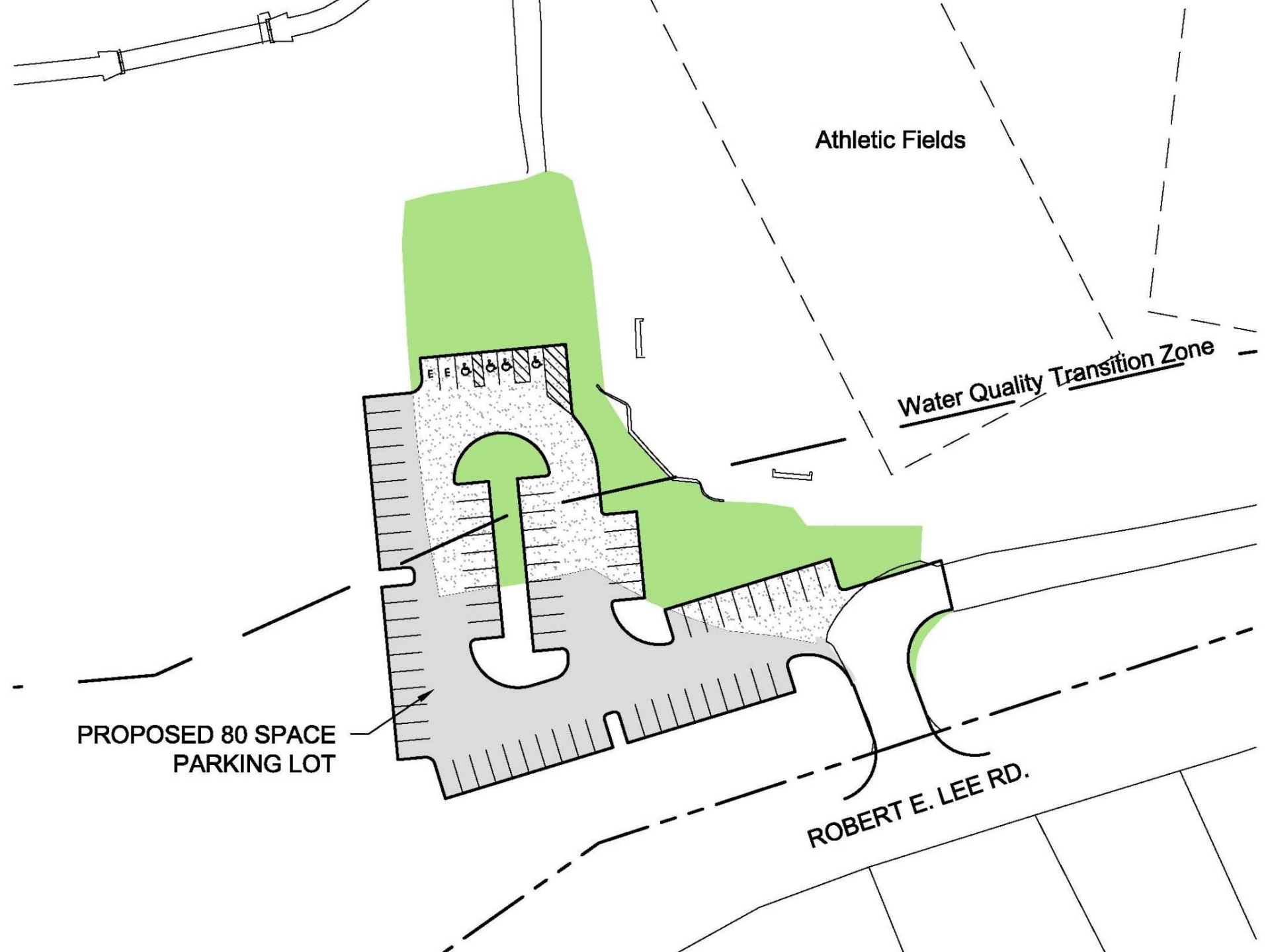


Athletic Fields

Water Quality Transition Zone

PROPOSED 80 SPACE
PARKING LOT

ROBERT E. LEE RD.

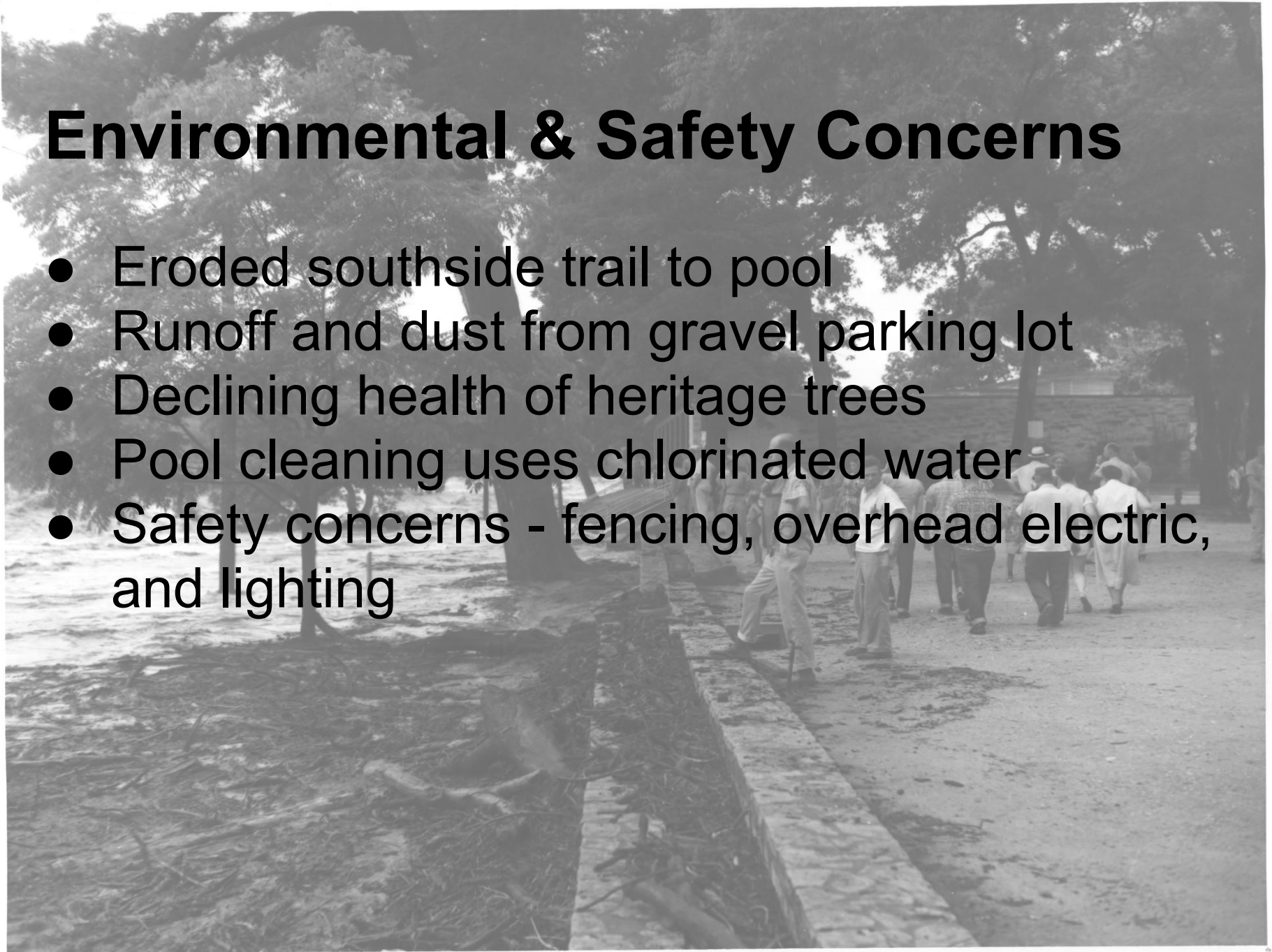


Benefits of Paved Parking

- ADA parking
- Landscape (reduce urban heat island)
- Improved stormwater runoff and dust control
- Water quality compliant with SOS requirements
- Controlled vehicle maneuvering
- Emergency vehicle access

Environmental & Safety Concerns

- Eroded southside trail to pool
- Runoff and dust from gravel parking lot
- Declining health of heritage trees
- Pool cleaning uses chlorinated water
- Safety concerns - fencing, overhead electric, and lighting



Environmental & Safety Benefits

- Improved turf and additional landscaping
- Improved water quality to pool and Barton Creek
- Dust control
- Improved health to heritage trees
- Partial riparian restoration
- Accessibility
- Decreased use of potable water
- Improved safety



General Grounds Improvements

- Sidewalk - Tree Court
 - Sidewalk - ADA access to south pool deck
 - Underground electrical
 - New lighting
 - Irrigation
 - Bicycle parking
 - Replace ticket booth
 - Paved parking
 - Landscaping
 - Pump system
 - Perimeter fencing
- 