

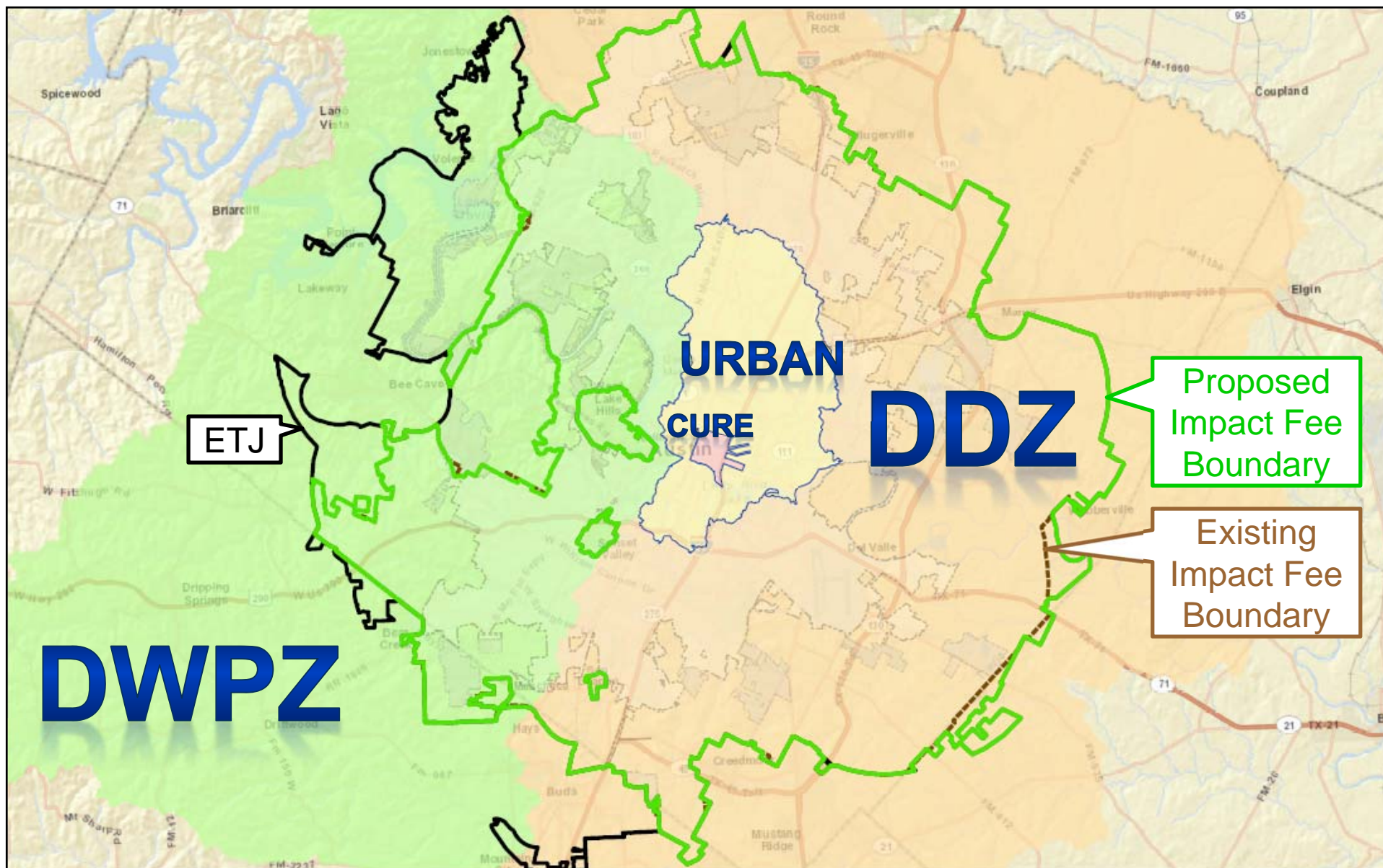
			OPTION 1:				OPTION 2:			
			Water:				Water:			
			Max Allow. Calc. Method: 50% Rate Rev. Credit				Max Allow. Calc. Method: Austin-Specific Rate Rev. Credit			
Current Impact Fees			Collected Fee: current zone structure		Compared to Current Fees:		Collected Fee: current zone structure		Compared to Current Fees:	
Water	\$ per Service Unit	% of Maximum Allowable Fee	\$ per Service Unit	% of Maximum Allowable Fee	\$ Increase / (\$ Decrease)	% Change	\$ per Service Unit	% of Maximum Allowable Fee	\$ Increase / (\$ Decrease)	% Change
Maximum Allowable Fee	\$3,307	100%	\$4,205	100%	\$898	27%	\$5,415	100%	\$2,108	64%
Collected fee:			Collected fee:				Collected fee:			
DWPZ - Outside ETJ Fee	\$2,500	75%	\$3,200	75%	\$700	28%	\$4,100	75%	\$1,600	64%
DWPZ - ETJ Fee	\$2,500	75%	\$3,200	75%	\$700	28%	\$4,100	75%	\$1,600	64%
DWPZ - Inside City Fee	\$2,200	65%	\$2,700	65%	\$500	23%	\$3,500	65%	\$1,300	59%
DDZ - ETJ Fee	\$1,800	55%	\$2,300	55%	\$500	28%	\$3,000	55%	\$1,200	67%
DDZ - Inside City Fee	\$1,000	30%	\$1,300	30%	\$300	30%	\$1,600	30%	\$600	60%
DDZ - Urban Watersheds Fee	\$800	25%	\$1,100	25%	\$300	38%	\$1,400	25%	\$600	75%
DDZ - CURE	\$700	20%	\$800	20%	\$100	14%	\$1,100	20%	\$400	57%
			Wastewater:				Wastewater:			
			Max Allow. Calc. Method: 50% Rate Rev. Credit				Max Allow. Calc. Method: Austin-Specific Rate Rev. Credit			
Current Impact Fees			Collected Fees: current zone structure		Compared to Current Fees:		Collected Fees: current zone structure		Compared to Current Fees:	
Wastewater	\$ per Service Unit	% of Maximum Allowable Fee	\$ per Service Unit	% of Maximum Allowable Fee	\$ Increase / (\$ Decrease)	% Change	\$ per Service Unit	% of Maximum Allowable Fee	\$ Increase / (\$ Decrease)	% Change
Maximum Allowable Fee	\$1,852	100%	\$1,767	100%	(\$85)	-5%	\$2,284	100%	\$432	23%
Collected fee:			Collected fee:				Collected fee:			
DWPZ - Outside ETJ Fee	\$1,400	75%	\$1,300	75%	(\$100)	-7%	\$1,700	75%	\$300	21%
DWPZ - ETJ Fee	\$1,400	75%	\$1,300	75%	(\$100)	-7%	\$1,700	75%	\$300	21%
DWPZ - Inside City Fee	\$1,200	65%	\$1,100	65%	(\$100)	-8%	\$1,500	65%	\$300	25%
DDZ - ETJ Fee	\$1,000	55%	\$1,000	55%	\$0	0%	\$1,300	55%	\$300	30%
DDZ - Inside City Fee	\$600	30%	\$500	30%	(\$100)	-17%	\$700	30%	\$100	17%
DDZ - Urban Watersheds Fee	\$500	25%	\$400	25%	(\$100)	-20%	\$600	25%	\$100	20%
DDZ - CURE	\$400	20%	\$400	20%	\$0	0%	\$500	20%	\$100	25%

Note: In the tables above, collected fee amounts are rounded to the nearest \$100

DWPZ: Drinking Water Protection Zone
DDZ: Desired Development Zone
ETJ: Extraterritorial Jurisdiction
SU: Service Unit

An Impact Fee Service Unit (SU) represents a standard 5/8-inch meter - for service unit equivalents of larger meters, see SU equivalency table

Current impact fees are for lots that were platted on or after October 1, 2007. For lots platted prior to this date see previous fee schedules in effect at time of platting.



			OPTION 3A: Uniform 75%				OPTION 3B: Uniform 80%			
			Water:				Water:			
			Max Allow. Calc. Method: Austin-Specific Rate Rev. Credit				Max Allow. Calc. Method: Austin-Specific Rate Rev. Credit			
			Collected Fees: uniform 75% of max allow., no zone reductions		Compared to Current Fees:		Collected Fees: uniform 80% of max allow., no zone reductions		Compared to Current Fees:	
Water	\$ per Service Unit	% of Maximum Allowable Fee	\$ per Service Unit	% of Maximum Allowable Fee	\$ Increase / (\$ Decrease)	% Change	\$ per Service Unit	% of Maximum Allowable Fee	\$ Increase / (\$ Decrease)	% Change
Maximum Allowable Fee	\$3,307	100%	\$5,415	100%	\$2,108	64%	\$5,415	100%	\$2,108	64%
	Collected fee:		Collected fee:				Collected fee:			
DWPZ - Outside ETJ Fee	\$2,500	75%			\$1,600	64%			\$1,800	72%
DWPZ - ETJ Fee	\$2,500	75%			\$1,600	64%			\$1,800	72%
DWPZ - Inside City Fee	\$2,200	65%	All Areas:	All Areas:	\$1,900	86%	All Areas:	All Areas:	\$2,100	95%
DDZ - ETJ Fee	\$1,800	55%	\$4,100	75%	\$2,300	128%	\$4,300	80%	\$2,500	139%
DDZ - Inside City Fee	\$1,000	30%			\$3,100	310%			\$3,300	330%
DDZ - Urban Watersheds Fee	\$800	25%			\$3,300	413%			\$3,500	438%
DDZ - CURE	\$700	20%			\$3,400	486%			\$3,600	514%
			Wastewater:				Wastewater:			
			Max Allow. Calc. Method: Austin-Specific Rate Rev. Credit				Max Allow. Calc. Method: Austin-Specific Rate Rev. Credit			
			Collected Fees: uniform 75% of max allow., no zone reductions		Compared to Current Fees:		Collected Fees: uniform 80% of max allow., no zone reductions		Compared to Current Fees:	
Wastewater	\$ per Service Unit	% of Maximum Allowable Fee	\$ per Service Unit	% of Maximum Allowable Fee	\$ Increase / (\$ Decrease)	% Change	\$ per Service Unit	% of Maximum Allowable Fee	\$ Increase / (\$ Decrease)	% Change
Maximum Allowable Fee	\$1,852	100%	\$2,284	100%	\$432	23%	\$2,284	100%	\$432	23%
	Collected fee:		Collected fee:				Collected fee:			
DWPZ - Outside ETJ Fee	\$1,400	75%			\$300	21%			\$400	29%
DWPZ - ETJ Fee	\$1,400	75%			\$300	21%			\$400	29%
DWPZ - Inside City Fee	\$1,200	65%	All Areas:	All Areas:	\$500	42%	All Areas:	All Areas:	\$600	50%
DDZ - ETJ Fee	\$1,000	55%	\$1,700	75%	\$700	70%	\$1,800	80%	\$800	80%
DDZ - Inside City Fee	\$600	30%			\$1,100	183%			\$1,200	200%
DDZ - Urban Watersheds Fee	\$500	25%			\$1,200	240%			\$1,300	260%
DDZ - CURE	\$400	20%			\$1,300	325%			\$1,400	350%

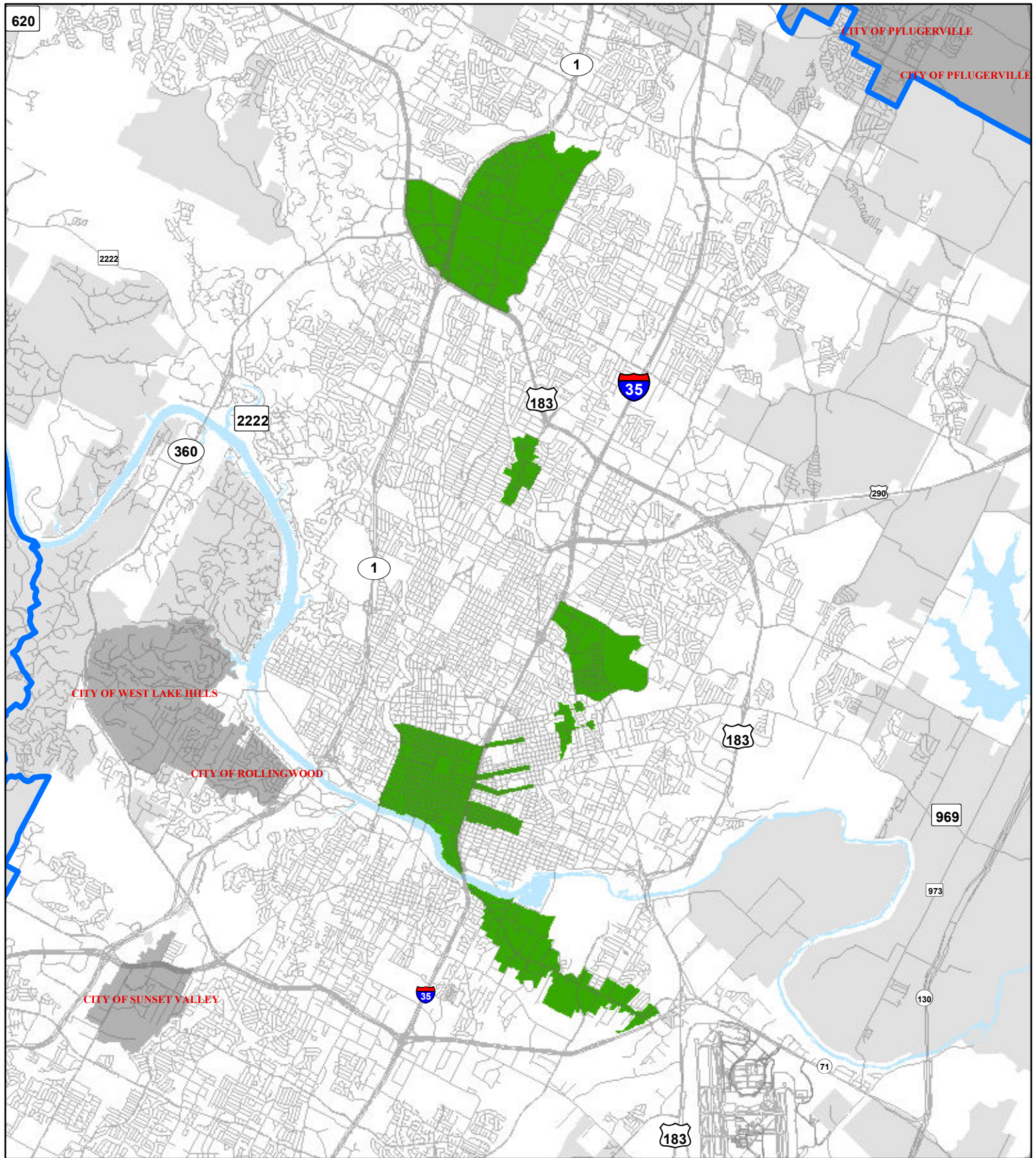
Note: In the tables above, collected fee amounts are rounded to the nearest \$100

DWPZ: Drinking Water Protection Zone
DDZ: Desired Development Zone
ETJ: Extraterritorial Jurisdiction
SU: Service Unit

An Impact Fee Service Unit (SU) represents a standard 5/8-inch meter - for service unit equivalents of larger meters, see SU equivalency table

Current impact fees are for lots that were platted on or after October 1, 2007. For lots platted prior to this date see previous fee schedules in effect at time of platting.

			OPTION 3C: Uniform 85%				OPTION 3Ci: 85% with Imagine Austin (IA) Incentive					
			Water:				Water:					
			Max Allow. Calc. Method: Austin-Specific Rate Rev. Credit				Max Allow. Calc. Method: Austin-Specific Rate Rev. Credit					
			Collected Fees: uniform 85% of max allow., no zone reductions				Collected Fees: most areas 85% of max allow., and 50% of max allow. in IA Incentive areas.					
			Compared to Current Fees:				Compared to Current Fees:					



Imagine Austin Incentive Areas



City of Austin
Austin Water Utility



Imagine Austin Incentive Areas

2/15/2013

This product is for informational purposes and may not have been prepared for or be suitable for legal, engineering, or surveying purposes. It does not represent an on-the-ground survey and represents only the approximate relative location of property boundaries. This product has been produced by the Austin Water Utility for the sole purpose of geographic reference. No warranty is made by the City of Austin regarding specific accuracy or completeness.

OPTION 4:**Water:****Max Allow. Calc. Method:**
Austin-Specific Rate Rev. Credit**Collected Fees:** DWPZ 85%,
and DDZ 60% of max allow.

Compared to Current Fees:

Water	Current Impact Fees		\$ per Service Unit	% of Maximum Allowable Fee	\$ Increase / (\$ Decrease)	% Change
Maximum Allowable Fee	\$3,307	100%	\$5,415	100%	\$2,108	64%
	Collected fee:		Collected fee:			
DWPZ - Outside ETJ Fee	\$2,500	75%	DWPZ	DWPZ	\$2,100	84%
DWPZ - ETJ Fee	\$2,500	75%	Areas:	Areas:	\$2,100	84%
DWPZ - Inside City Fee	\$2,200	65%	\$4,600	85%	\$2,400	109%
DDZ - ETJ Fee	\$1,800	55%	DDZ	DDZ	\$1,400	78%
DDZ - Inside City Fee	\$1,000	30%	Areas:	Areas:	\$2,200	220%
DDZ - Urban Watersheds Fee	\$800	25%	\$3,200	60%	\$2,400	300%
DDZ - CURE	\$700	20%			\$2,500	357%

Wastewater:**Max Allow. Calc. Method:**
Austin-Specific Rate Rev. Credit**Collected Fees:** DWPZ 85%,
and DDZ 60% of max allow.

Compared to Current Fees:

Wastewater	Current Impact Fees		\$ per Service Unit	% of Maximum Allowable Fee	\$ Increase / (\$ Decrease)	% Change
Maximum Allowable Fee	\$1,852	100%	\$2,284	100%	\$432	23%
	Collected fee:		Collected fee:			
DWPZ - Outside ETJ Fee	\$1,400	75%	DWPZ	DWPZ	\$500	36%
DWPZ - ETJ Fee	\$1,400	75%	Areas:	Areas:	\$500	36%
DWPZ - Inside City Fee	\$1,200	65%	\$1,900	85%	\$700	58%
DDZ - ETJ Fee	\$1,000	55%	DDZ	DDZ	\$400	40%
DDZ - Inside City Fee	\$600	30%	Areas:	Areas:	\$800	133%
DDZ - Urban Watersheds Fee	\$500	25%	\$1,400	60%	\$900	180%
DDZ - CURE	\$400	20%			\$1,000	250%

OPTION 4i: Imagine Austin (IA) Incentive**Water:****Max Allow. Calc. Method:** Austin-
Specific Rate Rev. Credit**Collected Fees:** DWPZ 85%,
DDZ 60%, and IA Incentive Areas
50% of max allow.**Most Areas**

Compared to Current Fees:

Imagine Austin Incentive Areas

Compared to Current Fees:

	\$ per Service Unit	% of Maximum Allowable Fee	\$ Increase / (\$ Decrease)	% Change	\$ Increase / (\$ Decrease)	% Change
Maximum Allowable Fee	\$5,415	100%	\$2,108	64%	\$2,108	64%
	Collected fee:		Collected fee:			
DWPZ	DWPZ		\$2,100	84%	N/A	N/A
Areas:	Areas:		\$2,100	84%	N/A	N/A
	\$4,600	85%	\$2,400	109%	N/A	N/A
DDZ	DDZ		\$1,400	78%	\$900	50%
Areas:	Areas:		\$2,200	220%	\$1,700	170%
	\$3,200	60%	\$2,400	300%	\$1,900	238%
IAAs: \$2,700	50%		N/A	N/A	\$2,000	286%

Wastewater:**Max Allow. Calc. Method:** Austin-
Specific Rate Rev. Credit**Collected Fees:** DWPZ 85%,
DDZ 60%, and IA Incentive Areas
50% of max allow.**Most Areas**

Compared to Current Fees:

Imagine Austin Incentive Areas

Compared to Current Fees:

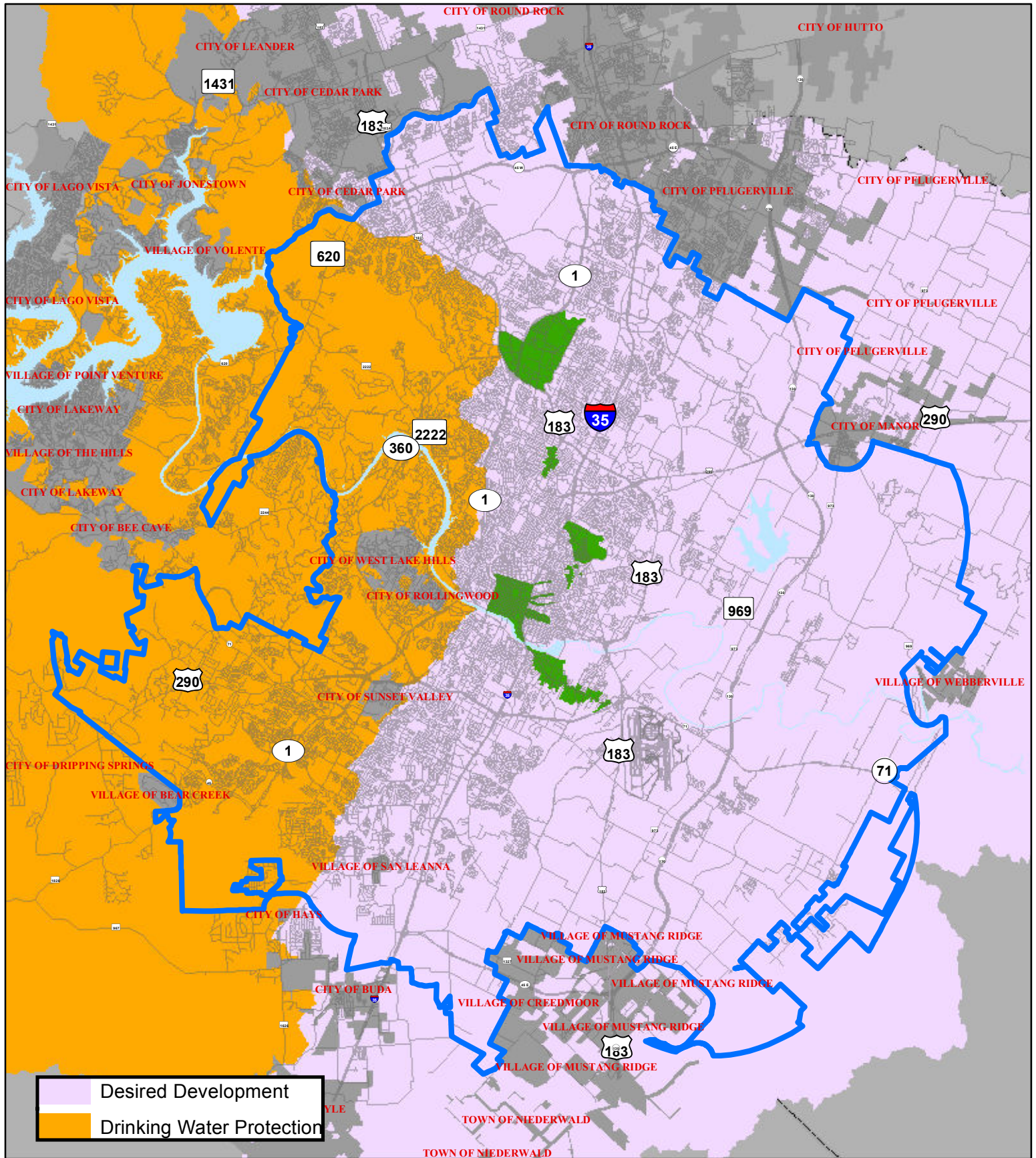
	\$ per Service Unit	% of Maximum Allowable Fee	\$ Increase / (\$ Decrease)	% Change	\$ Increase / (\$ Decrease)	% Change
Maximum Allowable Fee	\$2,284	100%	\$432	23%	\$432	23%
	Collected fee:		Collected fee:			
DWPZ	DWPZ		\$500	36%	N/A	N/A
Areas:	Areas:		\$500	36%	N/A	N/A
	\$1,900	85%	\$700	58%	N/A	N/A
DDZ	DDZ		\$400	40%	\$100	10%
Areas:	Areas:		\$800	133%	\$500	83%
	\$1,400	60%	\$900	180%	\$600	120%
IAAs: \$1,100	50%		N/A	N/A	\$700	175%

Note: In the tables above, collected fee amounts are rounded to the nearest \$100

DWPZ: Drinking Water Protection Zone
DDZ: Desired Development Zone
ETJ: Extraterritorial Jurisdiction
SU: Service Unit

An Impact Fee Service Unit (SU) represents a standard 5/8-inch meter - for service unit equivalents of larger meters, see SU equivalency table

Current impact fees are for lots that were platted on or after October 1, 2007. For lots platted prior to this date see previous fee schedules in effect at time of platting.



Imagine Austin Incentive Areas



City of Austin
Austin Water Utility



Option 4i

3/5/2013

This product is for informational purposes and may not have been prepared for or be suitable for legal, engineering, or surveying purposes. It does not represent an on-the-ground survey and represents only the approximate relative location of property boundaries. This product has been produced by the Austin Water Utility for the sole purpose of geographic reference. No warranty is made by the City of Austin regarding specific accuracy or completeness.