

2/10/13

SUBDIVISION REVIEW SHEET

CASE NO.: C8-2011-0154.3A.SH

Z.A.P. DATE: May 28, 2013

SUBDIVISION NAME: Thornbury II, Section Four

AREA: 11.765 acres

LOTS: 76

OWNER/APPLICANT: Travis Blue Goose Ltd.
(Brian Saathoff)

AGENT: Lakeside Engineers
(Chris Ruiz)

ADDRESS OF SUBDIVISION: Blue Goose Road

GRIDS: Q-28/29

COUNTY: Travis

WATERSHED: Decker Creek

JURISDICTION: Full Purpose

EXISTING ZONING: PUD

PROPOSED LAND USE: Single Family, R.O.W., Open Space

SIDEWALKS: Sidewalks are required on both sides of all interior streets and subdivision side of external roads as indicated on the plan.

DEPARTMENT COMMENTS: The request is for approval of a final plat out an approved preliminary plan, namely Thornbury II, Section Four. The proposed final plat is composed of 76 lots on 11.765 acres.

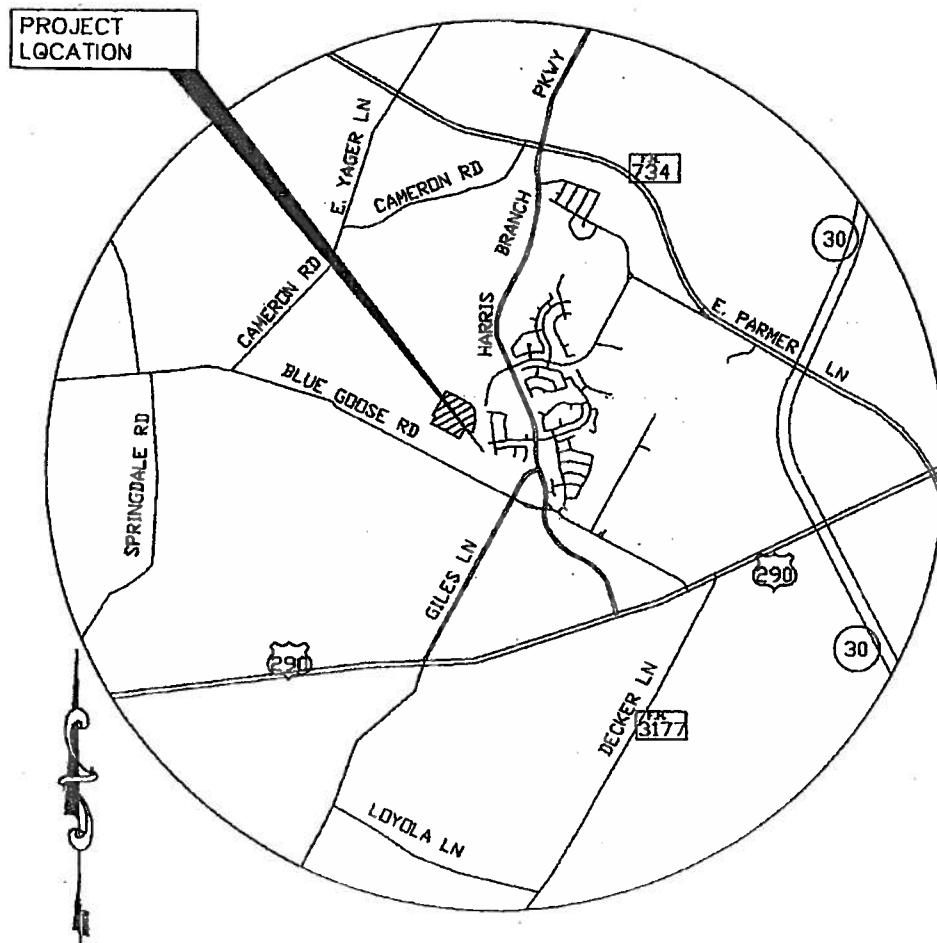
STAFF RECOMMENDATION: Staff recommends approval of this final plat. This plat meets all applicable City of Austin Land Development and State Local Government requirements.

ZONING AND PLATTING COMMISSION ACTION:

CASE MANAGER: Sylvia Limon
Email address: sylvia.limon@ci.austin.tx.us

PHONE: 974-2767

01/27/2

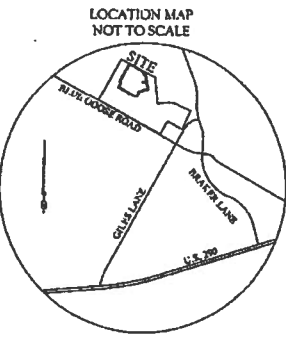


1"=4000'

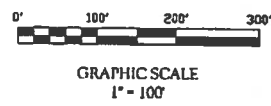
LOCATION MAP

019/0

CURVE	RADIUS	ARC	CHORD	BEARING	DELTA	LINE	BEARING	DISTANCE
C1	275.00	28.37	740.87	N15°52'43"W	51°58'11"	L1	S81°52'43"W	30.00
C2	11.00	23.50	21.31	S72°02'12"E	90°00'00"	L2	N28°00'00"E	30.00
C3	11.00	23.50	21.31	S16°53'40"E	90°00'00"	L3	S84°53'40"E	30.00
C4	11.00	23.50	21.31	S75°00'00"E	90°00'00"	L4	S12°00'00"E	33.82
C5	275.00	28.37	740.87	S23°17'30"E	18°21'49"	L5	S68°23'43"E	33.79
C6	11.00	19.13	18.05	S07°27'31"W	3°11'16"	L6	S89°12'43"E	63.10
C7	30.00	33.13	44.33	N13°00'00"E	2°00'00"	L7	N89°56'39"W	13.00
C8	11.00	18.87	17.87	S17°00'00"E	2°00'00"	L8	N12°00'00"E	31.86
C9	325.00	34.92	94.61	S19°23'23"W	18°14'29"	L9	S97°04'29"E	3.00
C10	11.00	23.15	21.10	N16°04'30"W	89°51'17"	L10	S11°04'30"E	11.80
C11	11.00	23.50	21.31	N71°00'00"E	90°00'00"	L11	S84°52'43"E	26.60
C12	11.00	23.50	21.31	N65°21'21"E	90°00'00"	L12	S49°00'00"W	109.67
C13	375.00	294.65	294.65	S33°53'22"E	21°56'46"	L13	S29°00'00"W	118.00
C14	325.00	33.50	33.50	S29°00'00"E	90°00'00"	L14	S60°00'00"W	41.62
C15	325.00	33.71	33.71	S54°32'00"E	90°00'00"	L15	N80°00'00"E	45.19
C16	325.00	33.50	33.50	S17°17'30"E	87°29'42"	L16	S89°29'17"E	30.00
C17	325.00	33.70	33.70	S20°17'30"E	89°30'45"			
C18	325.00	33.70	33.70	S33°30'45"E	90°00'00"			
C19	325.00	42.42	42.42	S20°14'30"E	87°28'43"			
C20	325.00	33.70	33.70	S17°17'30"E	87°29'42"			
C21	325.00	33.45	33.45	S11°00'00"E	87°10'17"			
C22	315.00	41.67	41.67	S26°21'00"E	1°00'00"			
C23	315.00	46.46	46.46	S27°02'12"E	1°00'00"			
C24	315.00	41.17	41.17	S41°04'16"E	1°00'00"			
C25	315.00	51.07	51.07	S33°00'00"E	1°00'00"			
C26	275.00	12.00	12.00	S66°12'22"E	83°07'31"			
C27	15.00	14.92	14.92	S16°29'01"E	5°00'00"			
C28	15.00	14.91	14.91	S47°53'17"E	10°00'00"			
C29	30.00	42.17	42.17	N28°21'40"E	21°43'38"			
C30	30.00	36.84	36.84	N34°02'43"E	21°00'00"			
C31	30.00	40.87	40.87	N31°32'32"E	40°00'00"			
C32	30.00	39.36	39.36	S37°32'38"E	44°00'00"			
C33	30.00	19.22	19.22	S49°23'12"E	23°00'00"			
C34	30.00	41.57	41.57	S16°00'00"E	40°00'00"			
C35	325.00	31.50	31.50	S21°23'20"W	57°23'23"			
C36	325.00	63.59	63.59	S16°53'23"W	1°00'00"			



LUCAS MUNOS SURVEY NO. 55
TRAVIS COUNTY, TEXAS
JANUARY 2013



LEGEND

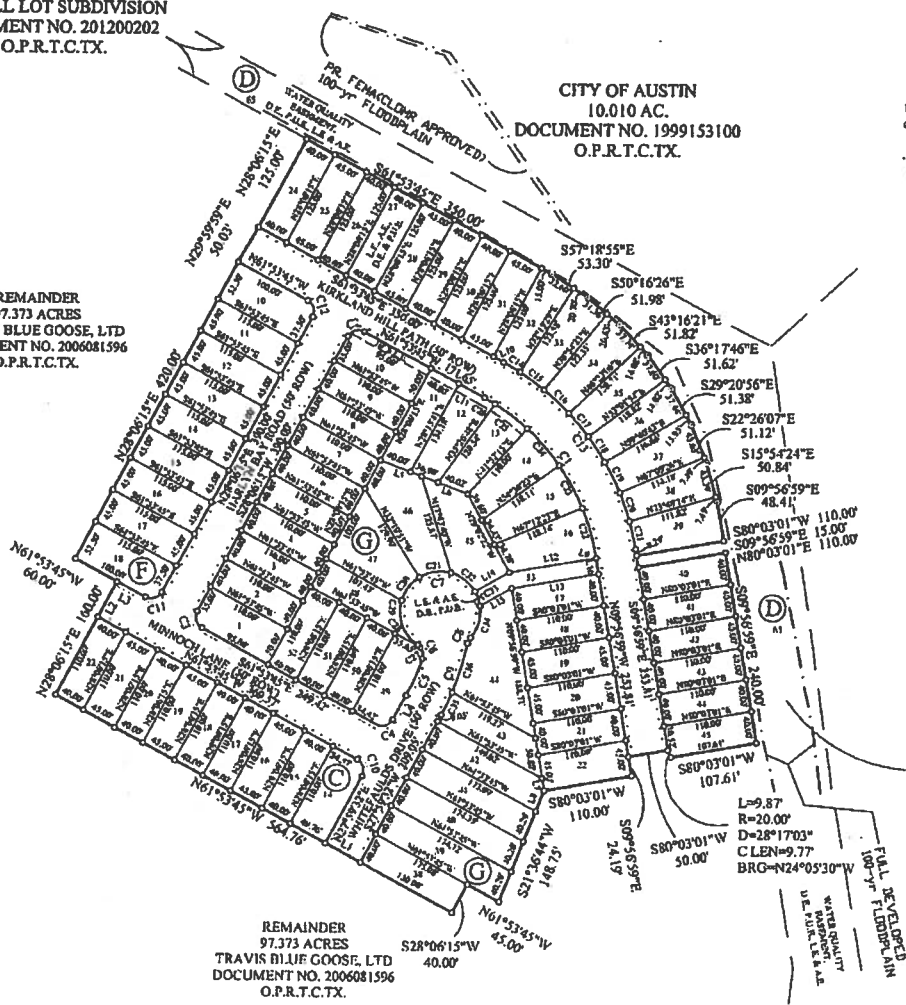
- 1/2 INCH IRON ROD WITH DELTA CUP MARK
- 1/2 INCH IRON ROD WITH DELTA CUP SET
- BENCHMARK
- RIGHT-OF-WAY
- SHOULDER EASEMENT
- PUBLIC UTILITY EASEMENT
- DRIVEWAY EASEMENT
- LANDSCAPE EASEMENT
- VEHICLE EASEMENT
- D.E.T.C.TX. DEED RECORDS, TRAVIS COUNTY, TEXAS
- R.P.T.C.TX. REAL PROPERTY RECORDS, TRAVIS COUNTY, TEXAS
- O.P.T.C.TX. OFFICIAL PUBLIC RECORDS, TRAVIS COUNTY, TEXAS
- P.L.T.C.TX. PLAT RECORDS, TRAVIS COUNTY, TEXAS
- 1" WIDE SIDEWALK
- 6" WIDE SIDEWALK

THORNBURY II SECTION TWO
A SMALL LOT SUBDIVISION
DOCUMENT NO. 201200202
O.P.T.C.TX.

CITY OF AUSTIN
10.010 AC.
DOCUMENT NO. 1999153100
O.P.T.C.TX.

THORNBURY II SECTION ONE
A SMALL LOT SUBDIVISION
DOCUMENT NO. 201000094
O.P.T.C.TX.

THORNBURY II SECTION TWO
A SMALL LOT SUBDIVISION
DOCUMENT NO. 201200202
O.P.T.C.TX.



BEARING BASIS: TEXAS STATE PLANE COORDINATE SYSTEM (CENTRAL ZONE) HAINES MARK

Delta Survey Group Inc.
8213 Brodie Lane Ste. 102 Austin, TX. 78745
office: (512) 282-5200 fax: (512) 282-5230

THORNBURY II, SECTION FOUR
(A SMALL LOT SUBDIVISION)

SHEET
3
OF
3

CASE # (C8-2011-0154.3A.SH)