



Wooldridge Square

Downtown Commission

June 19, 2013

Presented by:

Reynaldo Hernandez, RLA



Wooldridge Square Context



Wooldridge Square Context and Existing Conditions



- 1 – Parallel parking
- 2 – Gazebo
- 3 – Steep Slopes

Wooldridge Square Goals



- Preserve the historic role and landscape character of the square.
- Improve the accessibility, usability and safety
- Promote redevelopment and active uses around the square



Downtown Austin Plan:

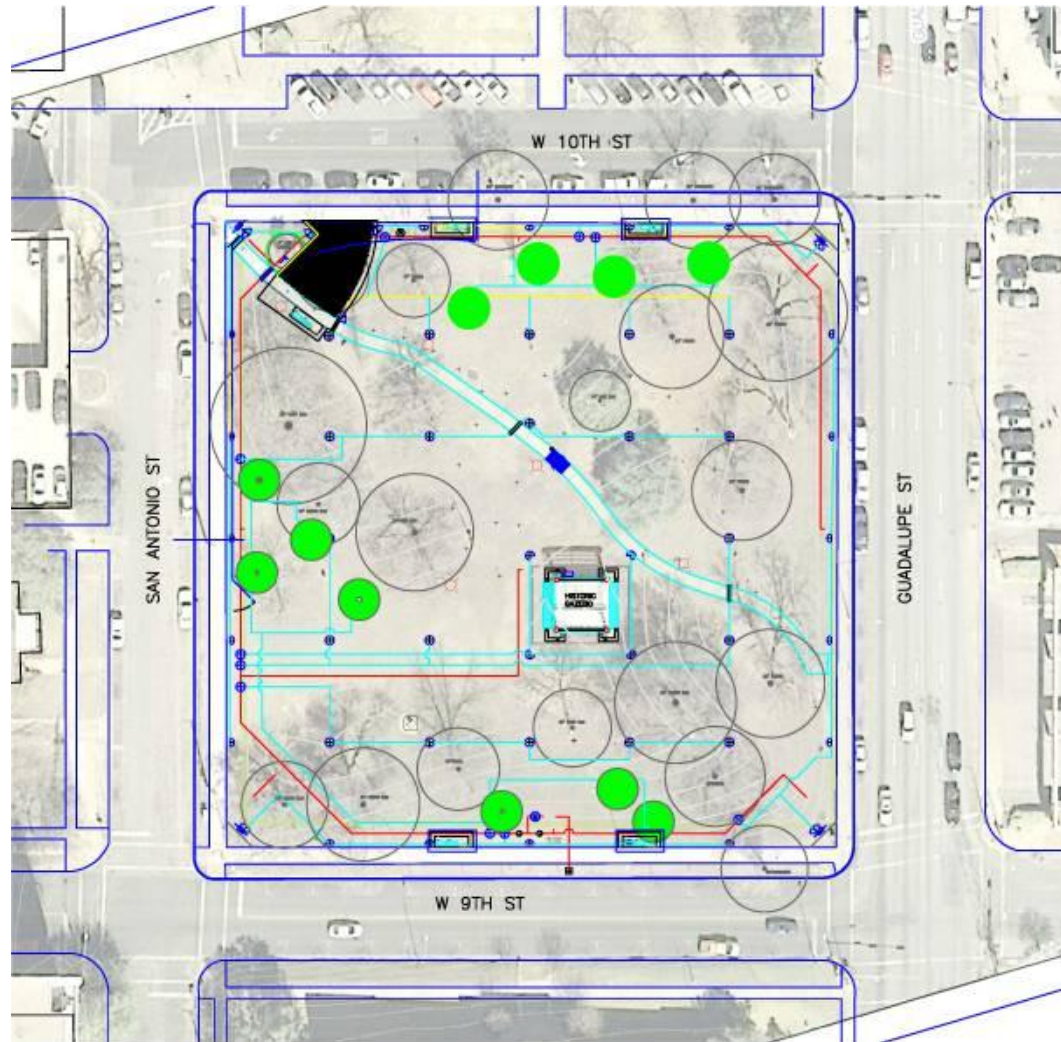


SPECIFIC RECOMMENDATIONS

- 1 Implement Great Streets sidewalks and street trees.
- 2 Provide bus shelters along Guadalupe Street (CMTA).
- 3 Introduce food kiosk with seating.
- 4 Create shady informal gathering area.
- 5 Leave area as unprogrammed open green space.
- 6 Fill and re-grade area to create more usable meadow.
- 7 Re-grade and shape to enhance amphitheater-like setting.
- 8 Create ample and accessible stage area.
- 9 Preserve historic bandstand and integrate into stage design.
- 10 Create an accessible path through the park.
- 11 Require pedestrian-oriented uses facing park.
- 12 Keep West 10th Street open to traffic.
- 13 Consider constructing public restrooms within existing garage.

Wooldridge Square Improvement Concept

Current and Proposed Improvements



CURRENT IMPROVEMENTS

- NEW LAWN
- ADDITIONAL TREES
- NEW IRRIGATION SYSTEM

PROPOSED IMPROVEMENTS

- BENCHES AND TRASH RECEPTACLES
- WALKWAY LIGHTING
- VENDOR PAD
- GAZEBO MAINTENANCE

Proposed Improvements



Next Steps



- Wooldridge Square re-opening September 15, 2013
- Development of funding plan for next phase of improvements (partial funding provided through 2012 bond program for Downtown Squares)
- Development of Master Plan early 2014

