



JOLLYVILLE TRANSMISSION MAIN: Environmental Commissioning Monthly Report

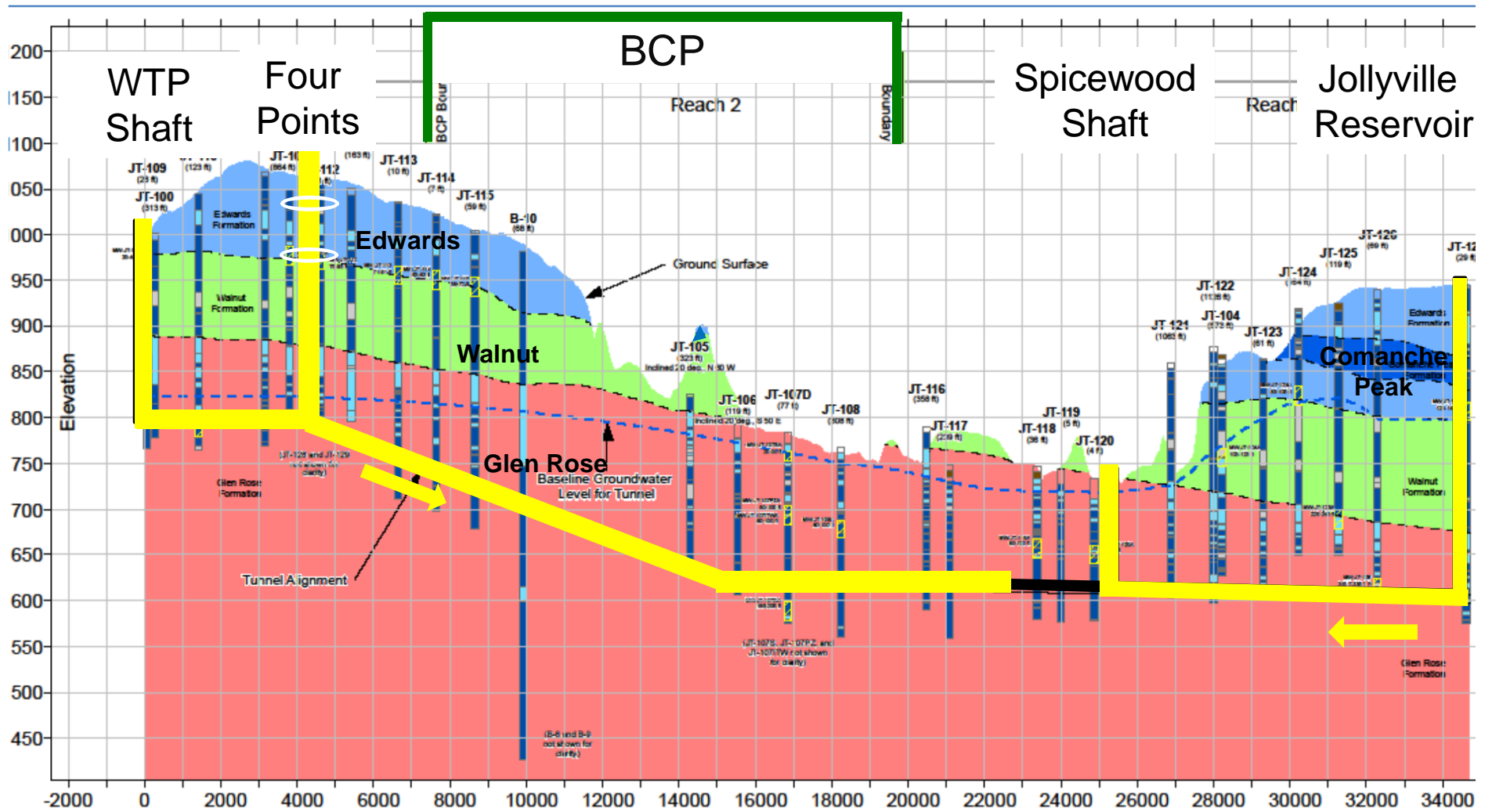
Presented to the Austin Environmental Board

July 17, 2013

David Johns, Watershed Protection Department

Jollyville Transmission Main Project as of 7/9/13

= progress





Environmental Commissioning Activities - JVTM

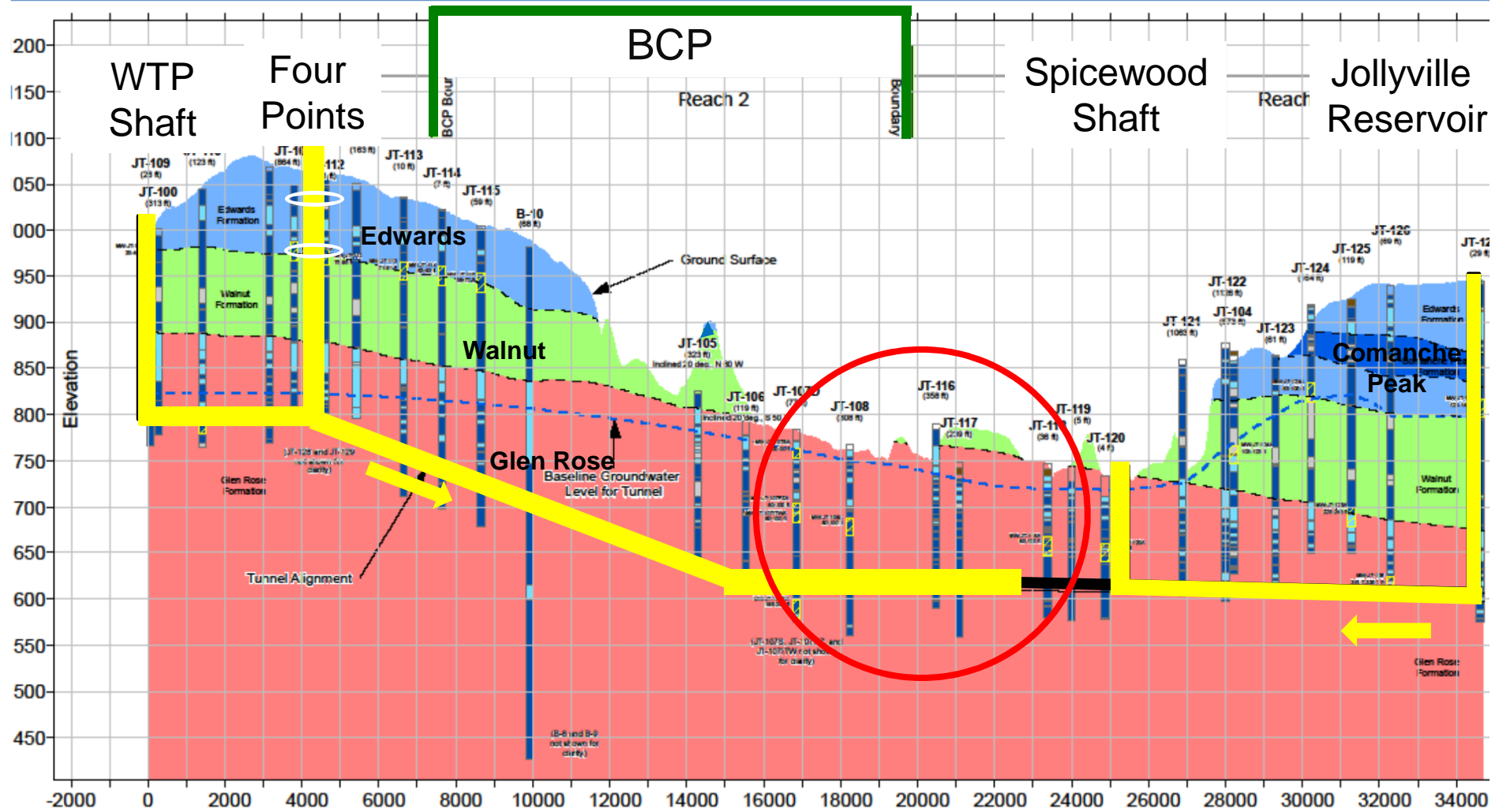
- Monthly shaft site (surface) visits concurrent with plant site visits
- Biweekly visits to tunnel reach 2
- Monthly meetings of the Environmental Commissioning Coordination Group (ECCG) to resolve potential issues
 - *Review of 90% landscaping plans*
 - *JT-130 well changed to flush grade completion to accommodate truck traffic, periodic checking for any damage*
 - *Pulled Lanier Spring weir to ease salamander movement – now monitoring with Marsh Mcbirney meter for flow, still using transducer for absolute depth*
- Environmental Monitoring
 - *Monitoring Schedule remaining at enhanced level for Reach 2 (weekly/biweekly)*

Initial INTERA Contract Amount	\$ 1,713,814
Total Amount Billed to Date	\$ 1,402,131
Total Remaining	\$ 311,683

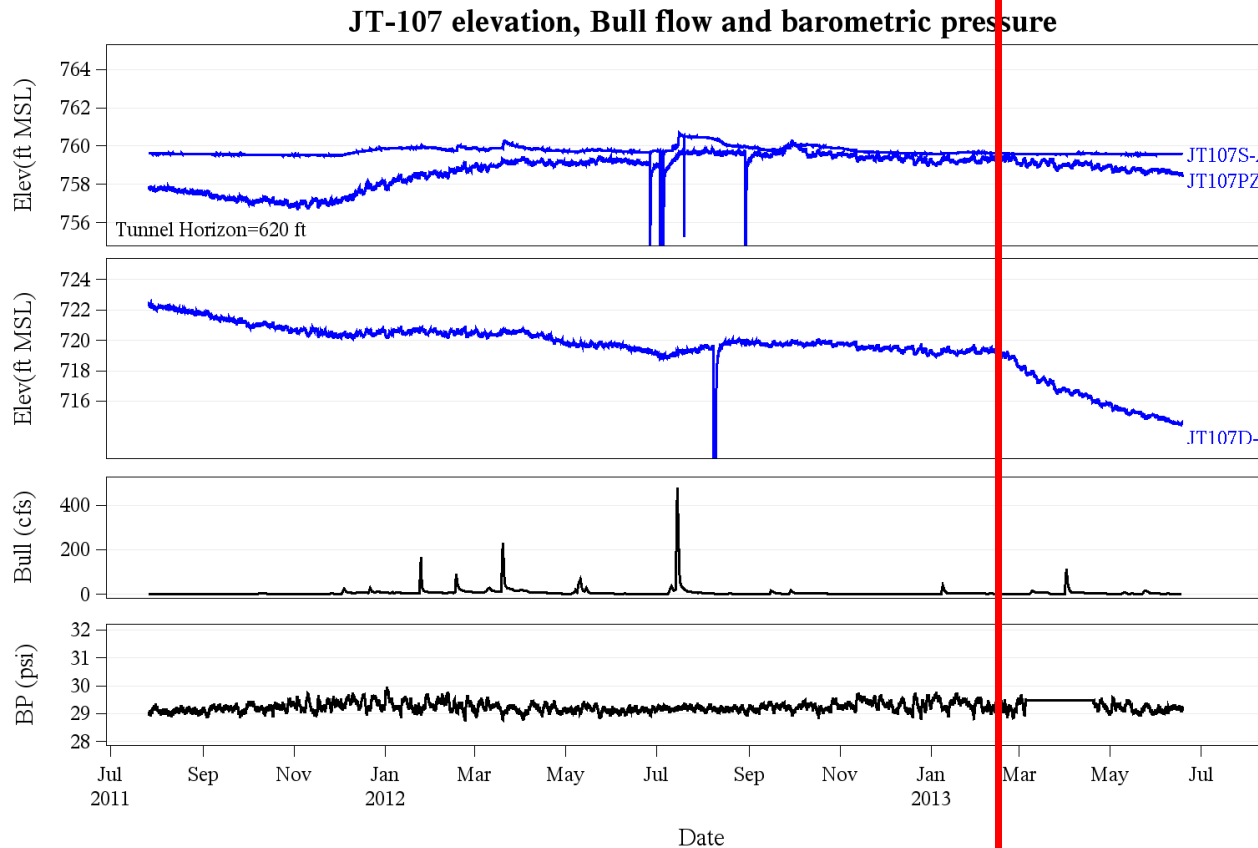


Tunnel Exiting BCP

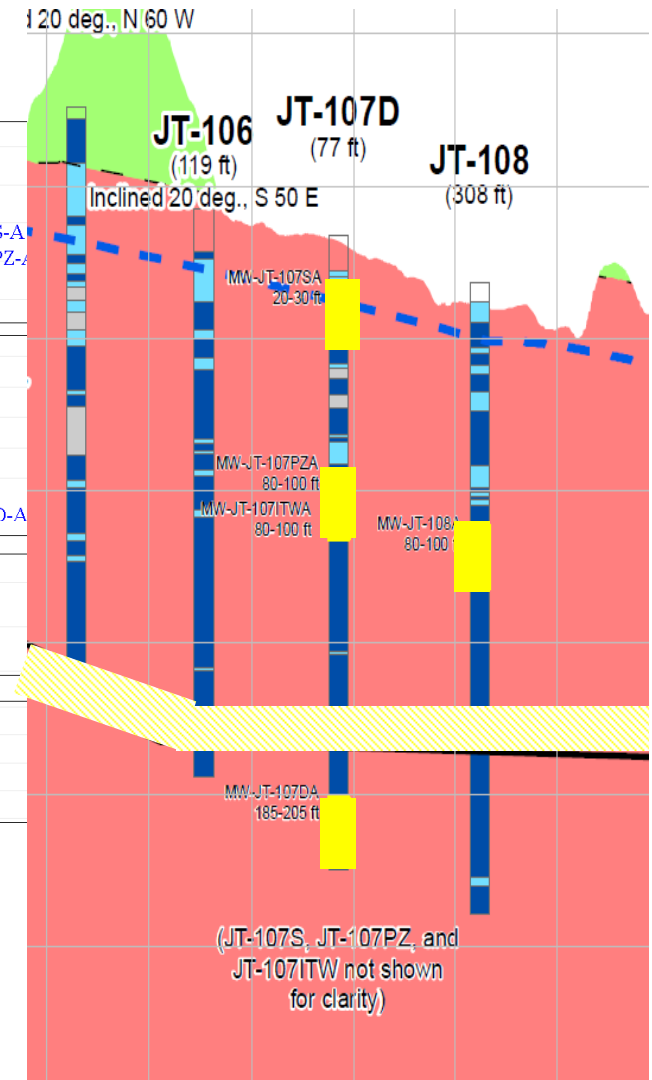
= progress



Tunnel passes 107 cluster 2/13/13

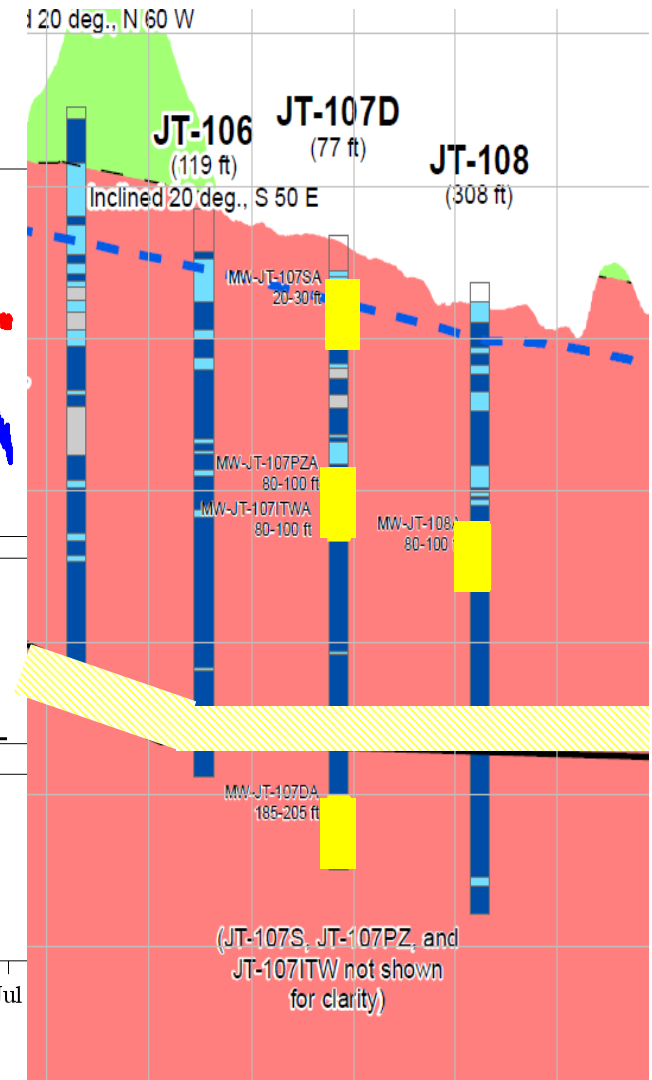
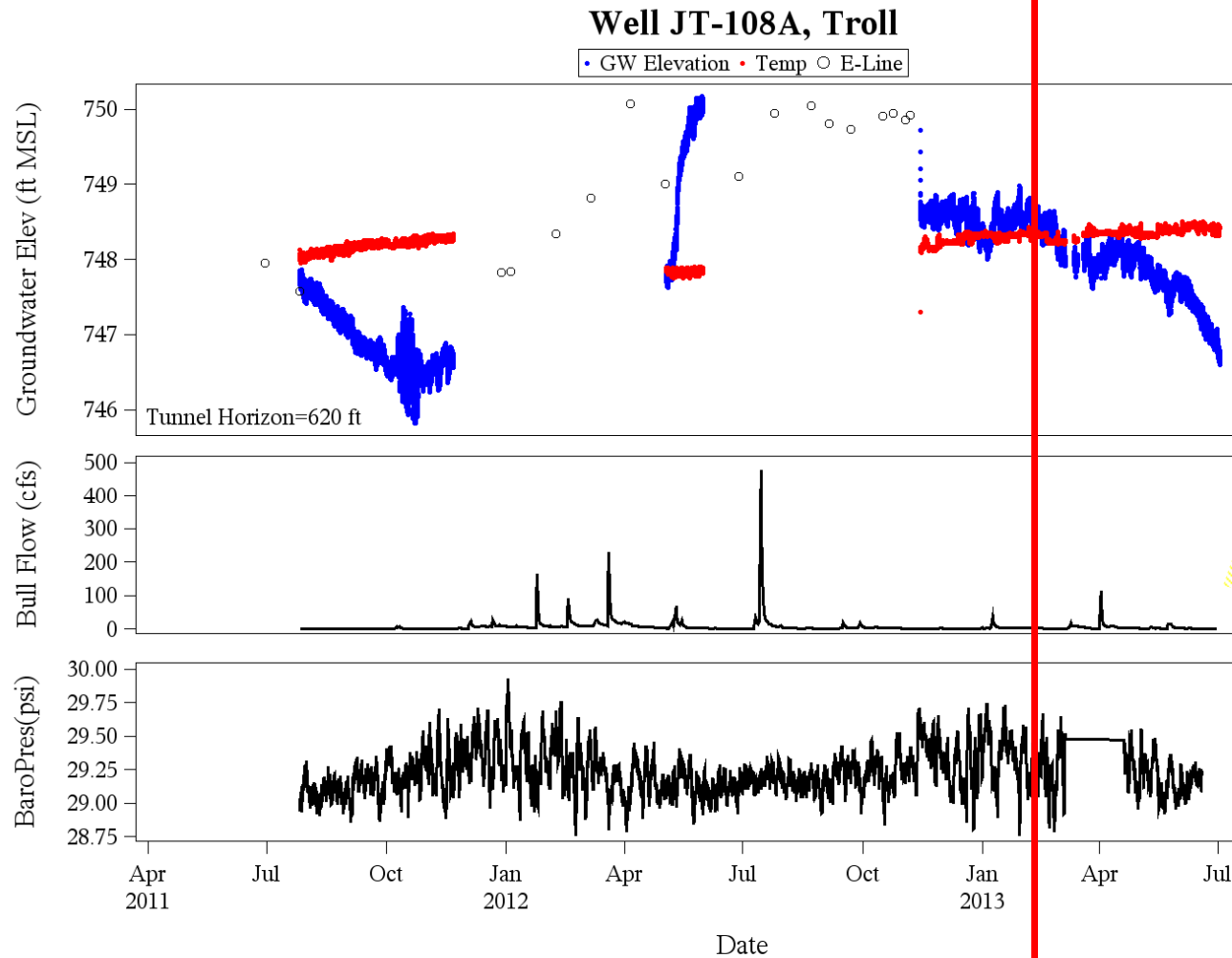


City of Austin DRAFT: QA/QC review pending



- Decline (~8 feet) in deepest well as tunnel passes; small decline in PZ-A
- no decline in 107S-A.

Tunnel passes 107 cluster 2/13/13





Surface Flow

- Main stem of Bull Creek is dry above Pit Spring, flow too slow to measure downstream of Pit (but some water present)
- Pit still has some very minimal flow at farthest downstream point
- Lanier Spring at ~ 0.03 cfs
- Trib 4 near Spicewood flow too slow to measure
- Values typical for midsummer

Lanier Spring Spring 2013



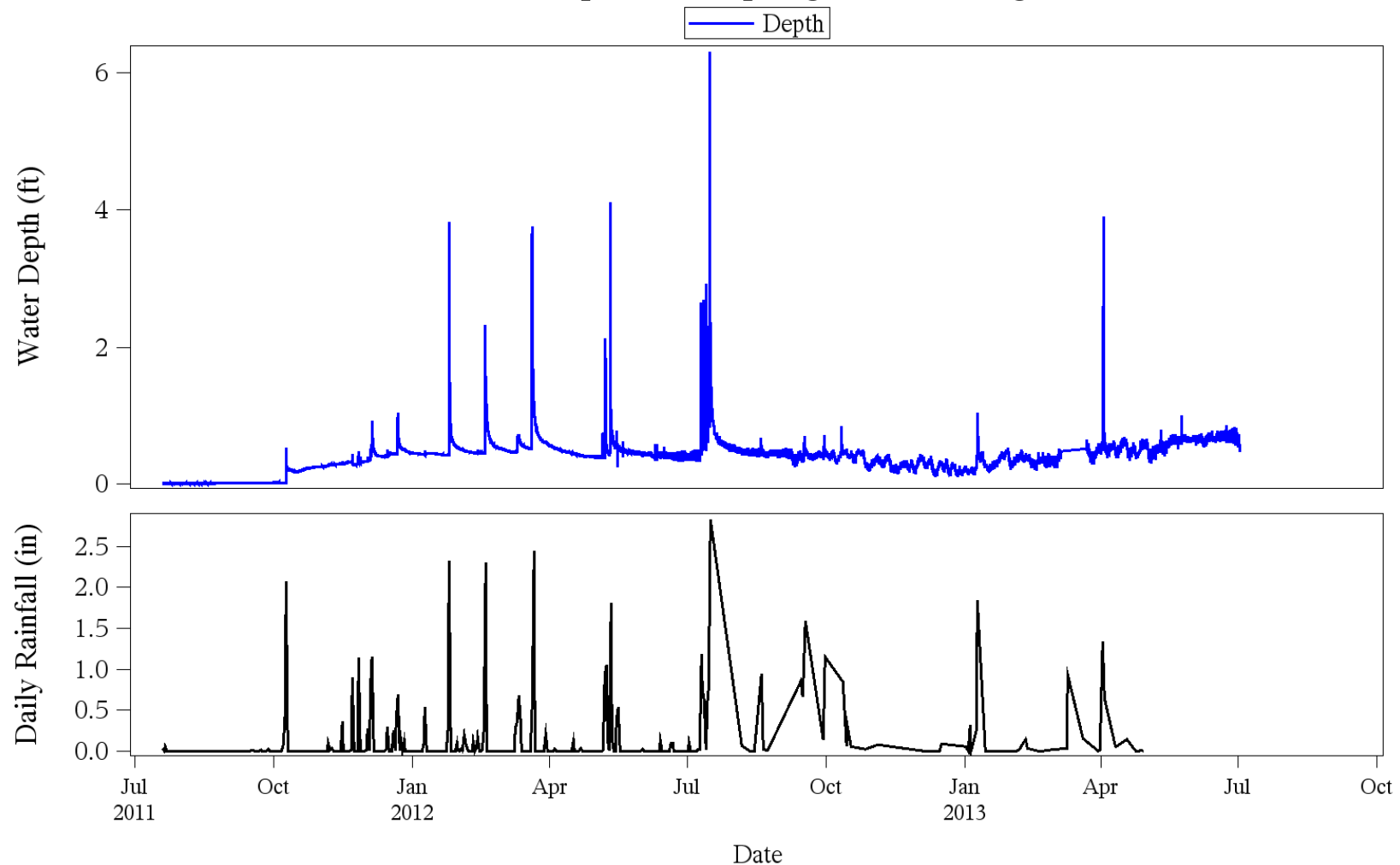
**Lanier Spring
Weir removed
July 2**





Bull Creek @ Trib 7 (Pit Spring proxy)

Bull Creek Spicewood Springs 7th Crossing, Troll

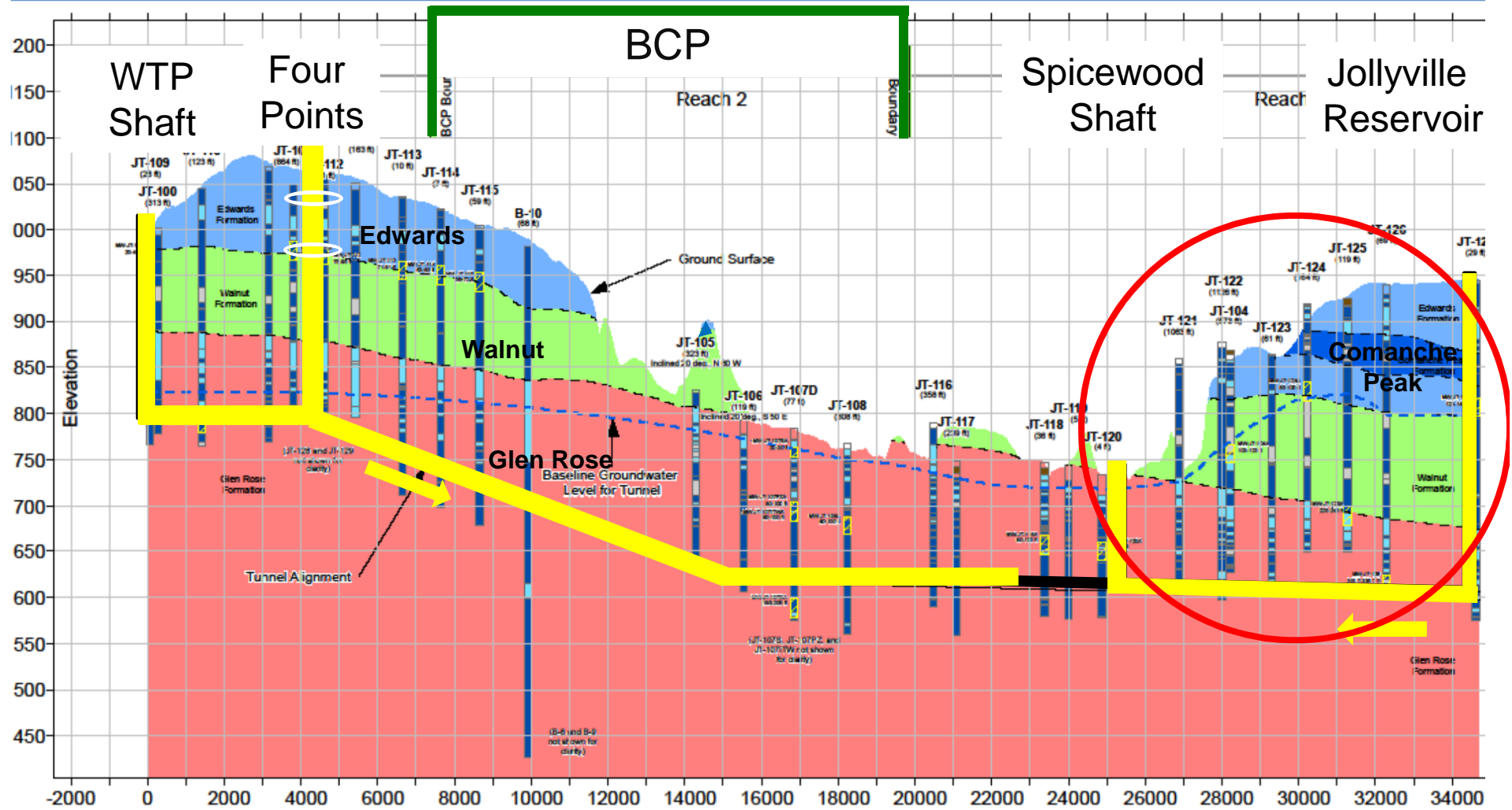


City of Austin DRAFT: QA/QC review pending

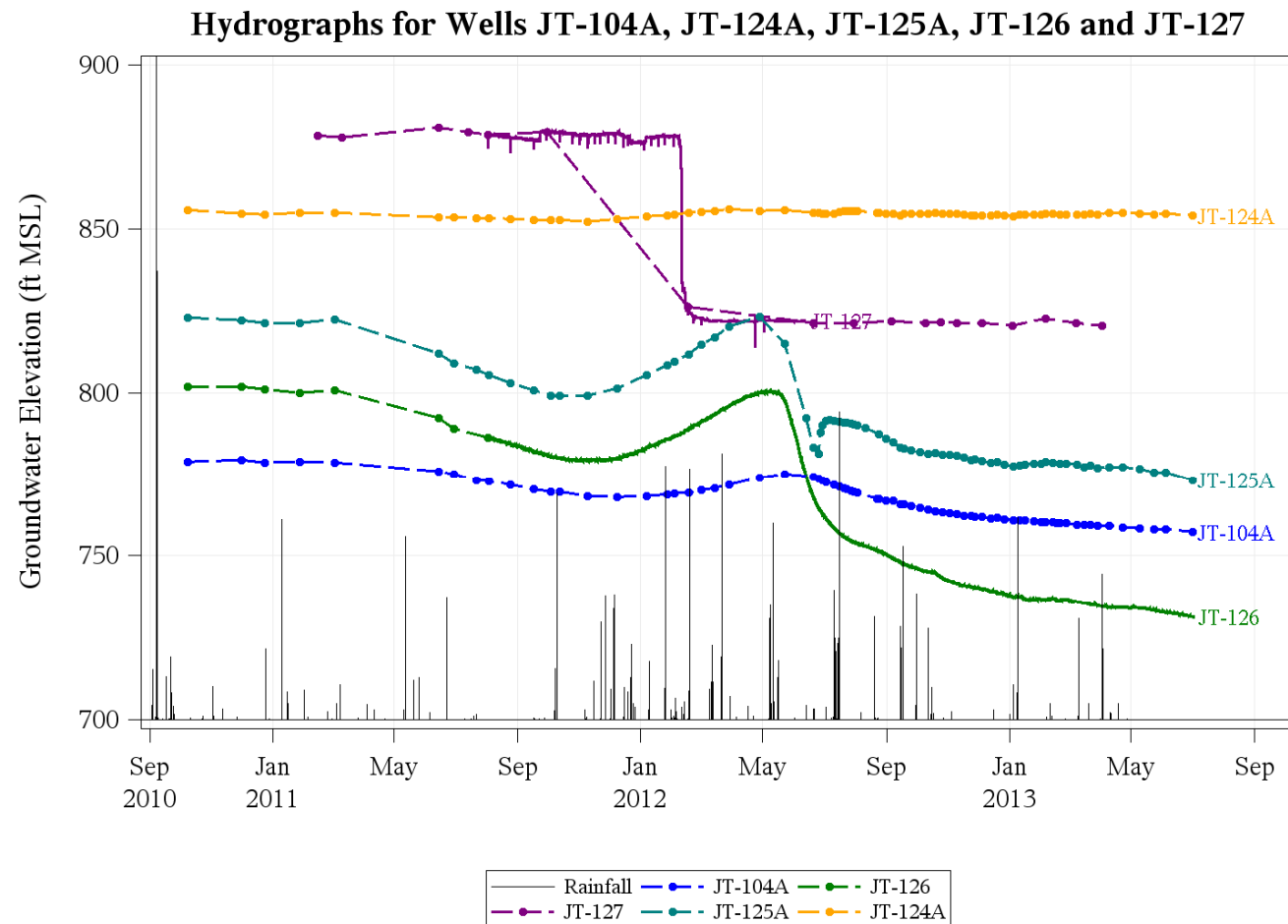


East Side Wells

= progress



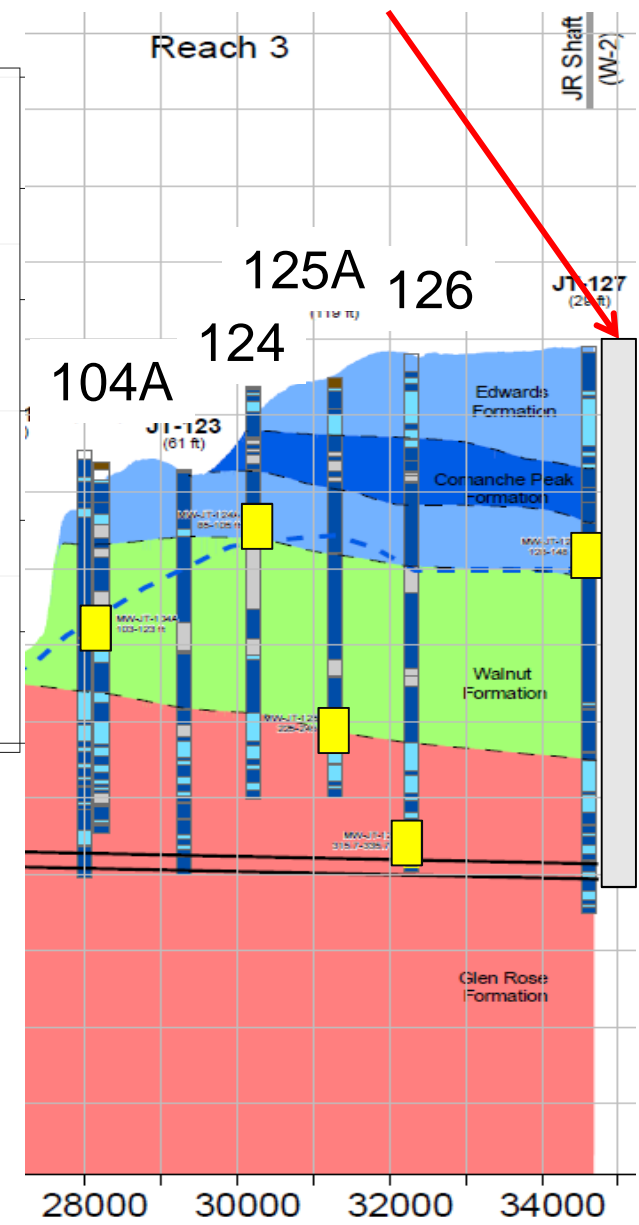
East Side Wells




City of Austin DRAFT: QA/QC review pending

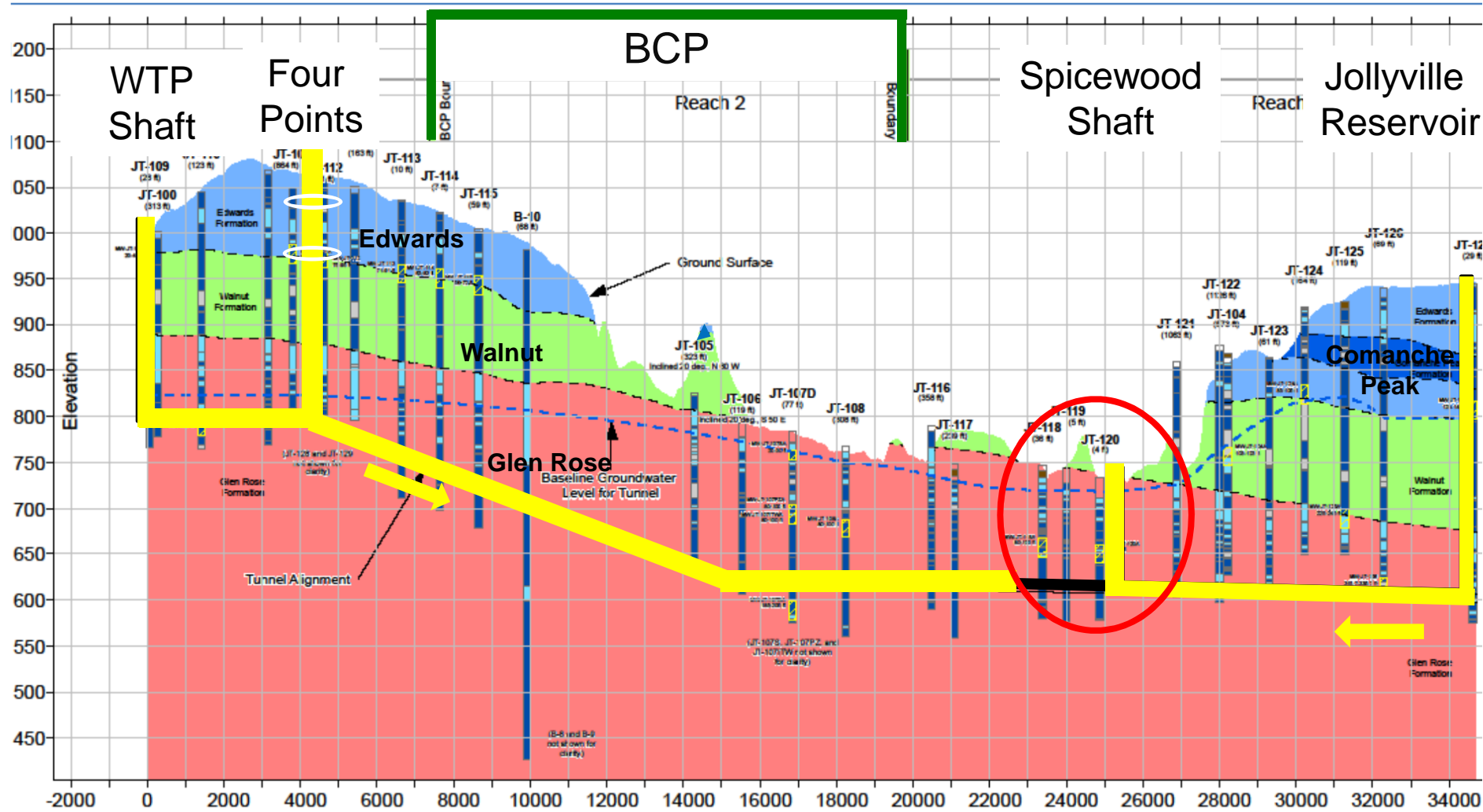
- Reach 3 complete – tunnel has progressed past all wells
- 126, 104 and 125A declining
- JT-124 Edwards well level relatively flat.

Jollyville Reservoir Shaft





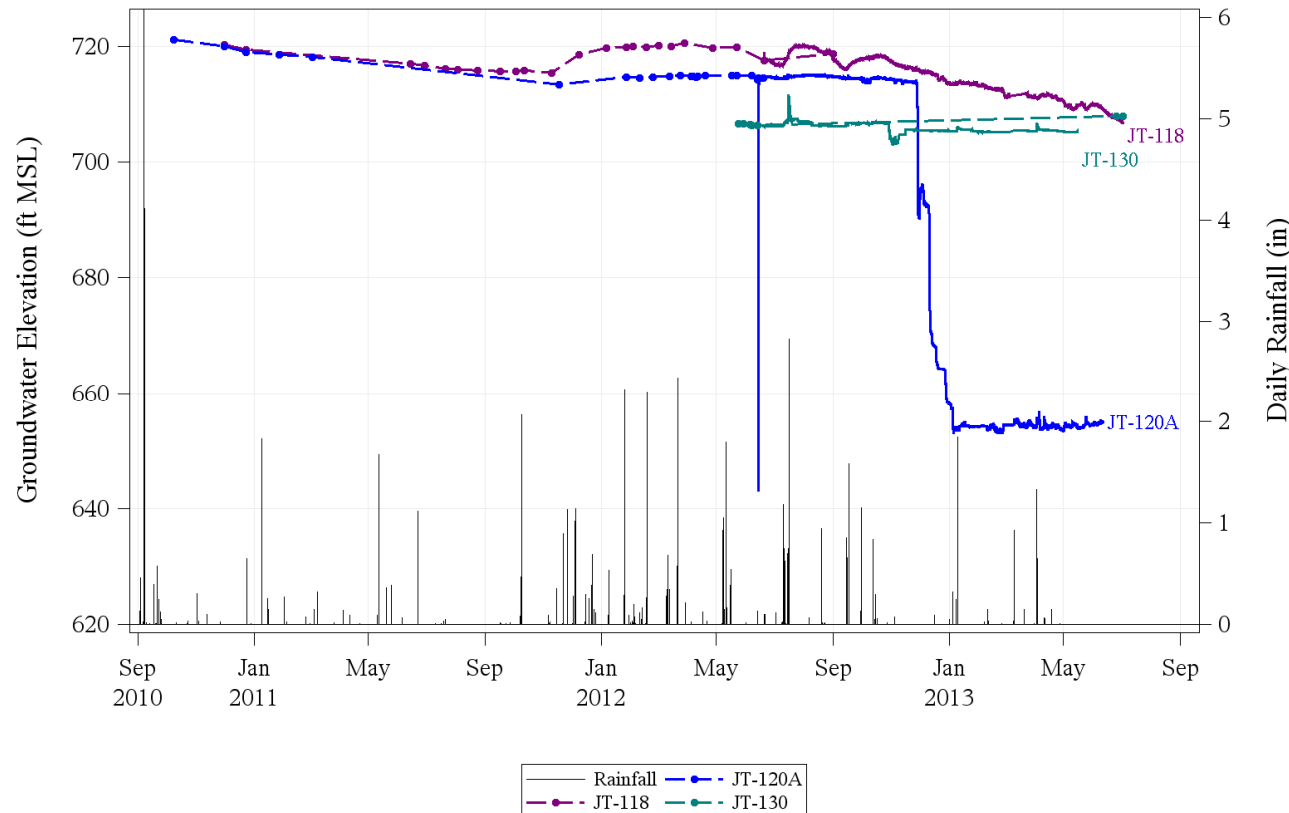
 = progress





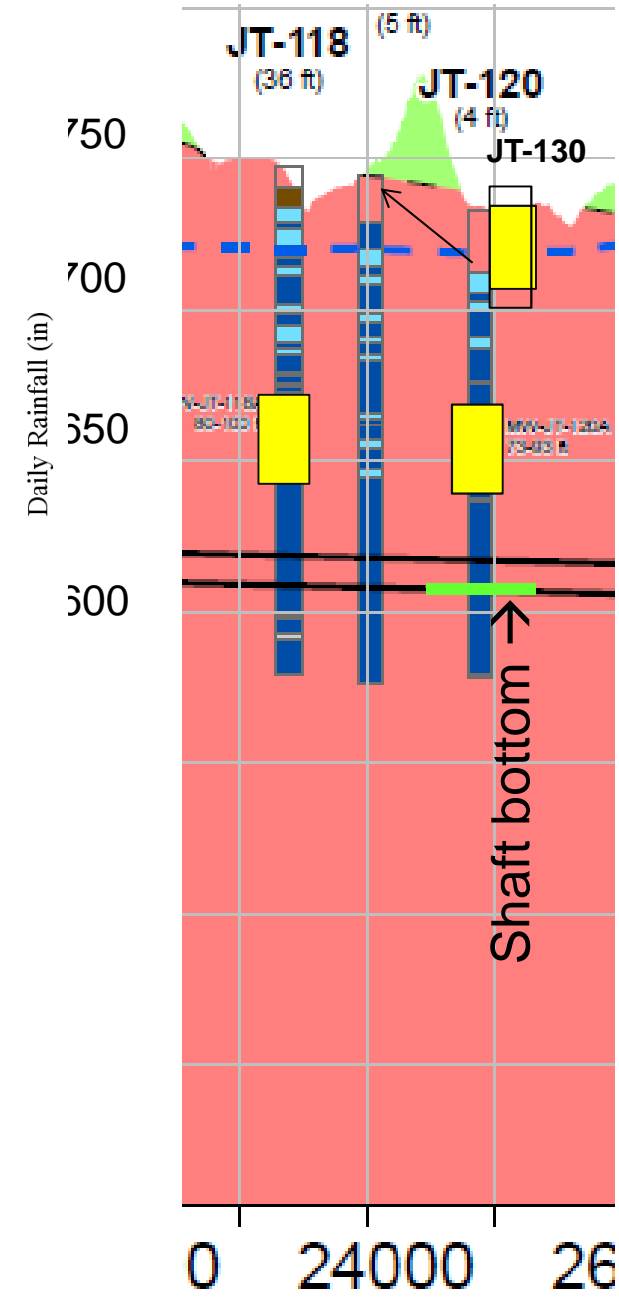
Spicewood Shaft Wells

Hydrographs for Wells JT-118, JT-120A and JT-130



City of Austin DRAFT: QA/QC review pending

- JT-120 (adjacent to shaft) water level at bottom of screen
- JT-118 declines influenced by shaft
- JT-130 has been re-engineered to withstand truck traffic: stickup removed, new pad with rebar poured. Transducer removed, now measuring with e-line.





Environmental Monitoring Update – Surface flow



- Main stem Bull creek below Pit Spring is flowing; upstream, creek and springs are dry or very minimal flow due to drought. Water quality parameters within expected ranges
- Nondetects for indicators of mining, vehicular operation, and drilling (TPH, Cu, Cr, Zn)
- Nondetects for di-n-butyl grout compounds in JT-112, Gaas spring

Pit Spring 7/2/13