

**Late Backup**

# CITYWIDE PATROL - COMPSTAT STAFFING PROFILE

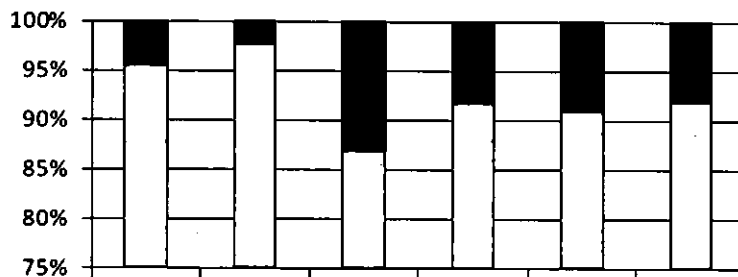
#113

Q1



When a Patrol Region reaches the 90% threshold for first responders (10% vacancies) the Bureau Chief will freeze the transfers of POs out of the Region.  
 When Patrol Citywide reaches the 90% threshold for first responders (10% vacancies) there will be departmental freeze on the transfers of all POs out of Patrol. Transfers within patrol can continue.

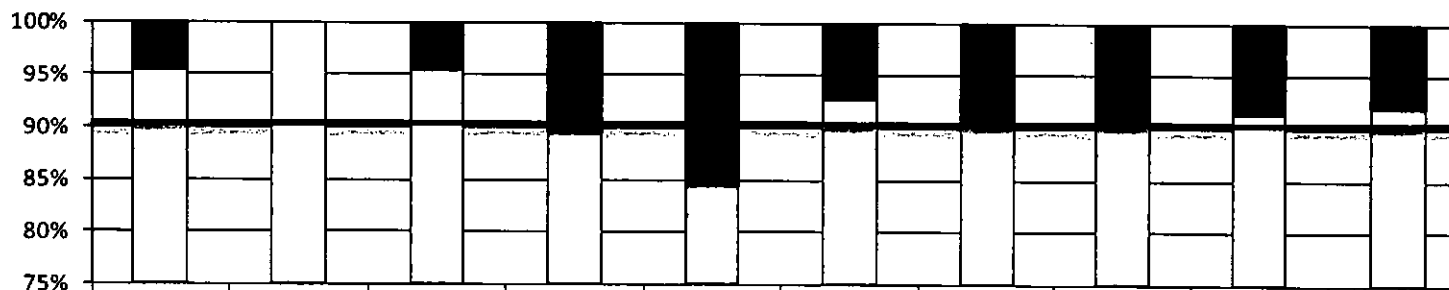
## Patrol Region Staffing



	DTAC	Region 1	Region 2	Region 3	Region 4	Citywide
■ Open Positions	3	3	20	11	13	50
□ Long-term Leave	5	5	2	5	3	20
□ PPO	0	0	0	0	0	0
□ Current Staffing	57	115	129	114	126	541

	Authorized	Open	PPOs	Current	Actual % Vacant	Effective % Vacant
<b>Patrol</b>						
Officer	611	50	0	561	8.2%	11.5%
Corporal	64	2		62	3.1%	
<b>Non-Patrol</b>						
Officer	481	22		459	4.6%	
Corporal	16	2		14	12.5%	
Support Detective	84	2		82	2.4%	
Central Detective	213	6		207	2.8%	
<b>TOTAL</b>						
Officer	1092	72	0	1020	6.6%	
Corporal	80	4		76	5.0%	
Detective	297	8		289	2.7%	

## Patrol Sector Staffing



	GEORGE	BAKER	IDA	ADAM	EDWARD	CHARLIE	HENRY	FRANK	DAVID	CITYWIDE
■ Open Positions	3	0	3	8	12	5	6	7	6	50
□ Long-term Leave	5	3	2	0	2	3	2	2	1	20
□ PPOs	0	0	0	0	0	0	0	0	0	0
□ Current Staffing	57	55	60	67	62	59	55	63	63	541