

The Implementation Plan for Bacteria Total Maximum Daily Loads (TMDL) in 4 Austin Watersheds

**Presented to the City of Austin Environmental Board
October 2, 2013**



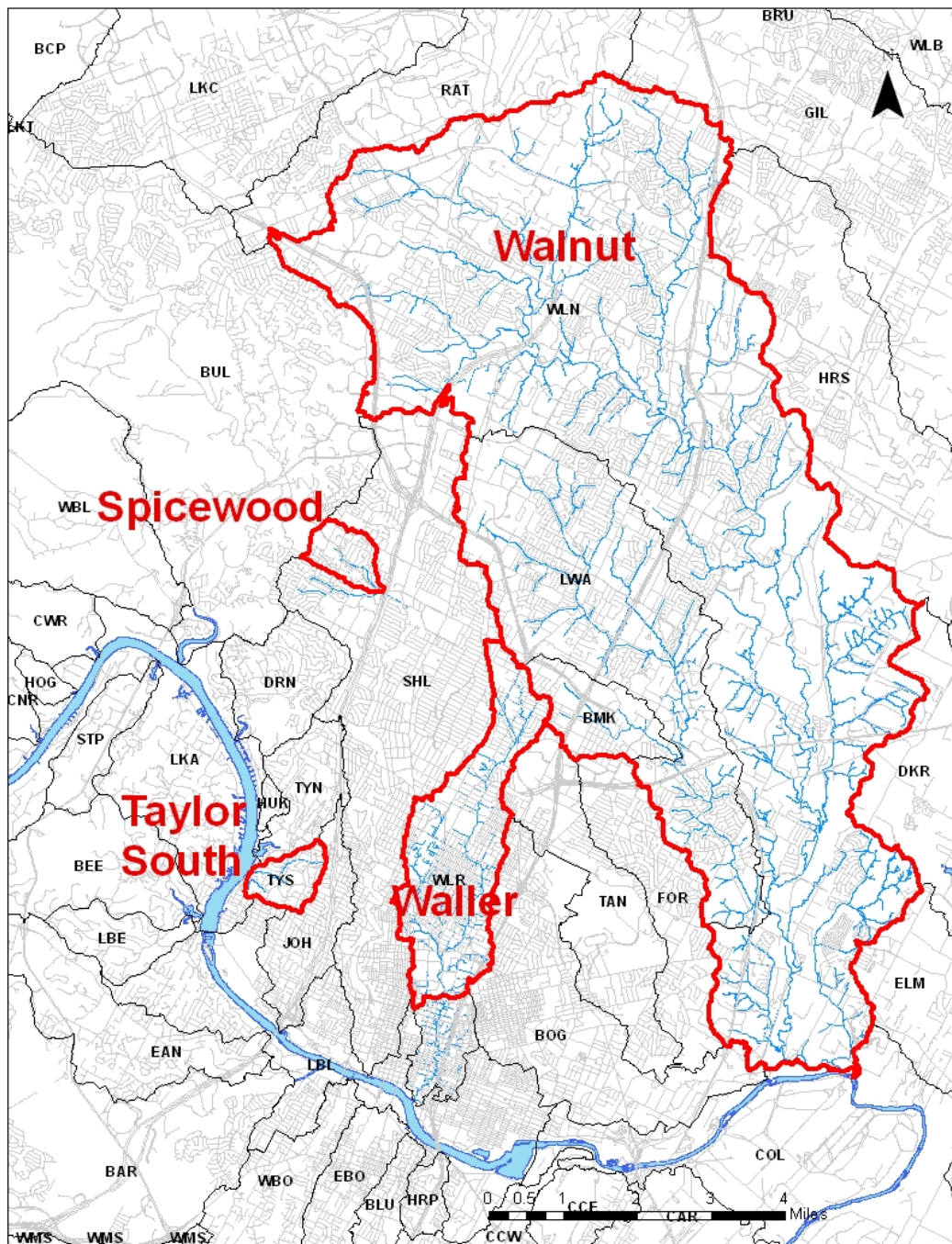
Upcoming Meeting

Third Public Meeting

Proposed fecal pollution reduction solutions presented to the public in open house format

October 9, 2013 at 6:30 pm

One Texas Center, 3rd Floor Room 325
505 Barton Springs Rd
Austin 78733



Austin water bodies identified by TCEQ as impaired for contact recreation:

- Waller Creek (upstream of 15th)
- Walnut Creek
- Spicewood Trib to Shoal
- Taylor Slough South

TMDL and I-Plan

Total maximum daily load (TMDL)

- How much fecal bacteria must be reduced to meet water quality standard
- Calculated by TCEQ

Implementation Plan (I-Plan)

- How fecal bacteria will be reduced
- Developed by stakeholders, coordinated by UT

I-Plan Coordinating Committee

- Austin Water Utility, Watershed Protection Department
- Austin Environmental Board
- University of Texas
- Travis County
- TxDOT
- PODER
- Sierra Club
- Austin Neighborhood Council
- Shoal Creek/Pease Park Conservancy
- Friends of Austin Dog Parks
- Austin Chamber of Commerce
- Home Builders Association/Real Estate Council of Austin

Working since February 2013 to develop I-Plan:

<https://www.utexas.edu/law/centers/cppdr/services/tmdl.php>

Management Measures

Riparian Restoration

#	Action	Entity
1.1	Add Grow Zones to new parks	City of Austin
1.2	Recruit creek/park adopters	KAB/APF
1.3	Use volunteers to expand Grow Zones	KAB/APF
1.4	Increase riparian buffers with W.P.O.	City of Austin
1.5	Increase waterway setbacks in Walnut Creek	Travis County

Management Measures

Wastewater Infrastructure

#	Action	Entity
2.1	Require failing OSSF to connect to sewers	City of Austin
2.2	Incentivize OSSF repair	Travis County
2.3,4	Inspect and repair sewer lines	City of Austin/UT
2.5,6	Respond to sewer overflows	City of Austin/UT
2.7	Inspection/enforcement of private sewer laterals	Travis County
2.8	Public toilet in Waller Creek	City of Austin

Management Measures

Domestic Pet Waste

#	Action	Entity
3.1	Scoop the Poop customized signs in parks	City of Austin
3.2	Install pet waste bag dispensers in parks	City of Austin
3.3	Place educational kiosk in Walnut Creek Park	Austin/FOADP
3.4	Pet-care business education	Sierra Club/COC

Management Measures

Resident Outreach

#	Action	Entity
4.1	Austin Neighborhood Council briefings	CoA/ANC
4.2	Austin Environmental Board	CoA/EB
4.3	Homeless Survival Guide	CoA
4.4	Earth Camp and AISD education	CoA
4.5	Austin Parks Foundation/KAB Outreach	APF/KAB
4.6	Community communication network	Shoal Conserv.
4.7	PODER briefings	CoA/PODER

Management Measures

Stormwater Treatment

#	Action	Entity
5.1	Retrofit controls on public lands	City of Austin
5.2	Inspect/maintain City, commercial controls	City of Austin
5.3	Inspect private controls within jurisdiction	Travis County
5.4,5	Conduct dry-weather outfall screening	CoA/UT
5.6	Pilot study road bacteria reduction method	Travis County
5.7	Street sweeping on UT campus	UT
5.8	Construction site inspection	City of Austin
5.9	Inspect commercial/industrial facilities	Travis County

Potential Load Reduction

TMDL bacteria reduction still being calculated by TCEQ...

I-Plan proposes 3.7×10^{16} mpn/year reduction in *E. coli* bacteria in these 4 watersheds

Citywide Focus

Although TMDL and I-Plan will focus only on the 4 impaired watersheds, City of Austin will focus on city-wide strategies.

Next Steps

Third Public Meeting

Proposed fecal pollution reduction solutions presented to the public in open house format

October 9, 2013 at 6:30 pm

One Texas Center, 3rd Floor Room 325
505 Barton Springs Rd
Austin 78733

For More Information

- Visit the project website:
 - <https://www.utexas.edu/law/centers/cppdr/services/tmdl.php>
- Read City report about the affected watersheds:
 - http://www.austintexas.gov/watershed_protection/publications/document.cfm?id=196478

Email: Chris.Herrington@austintexas.gov

Call: 512-974-2840