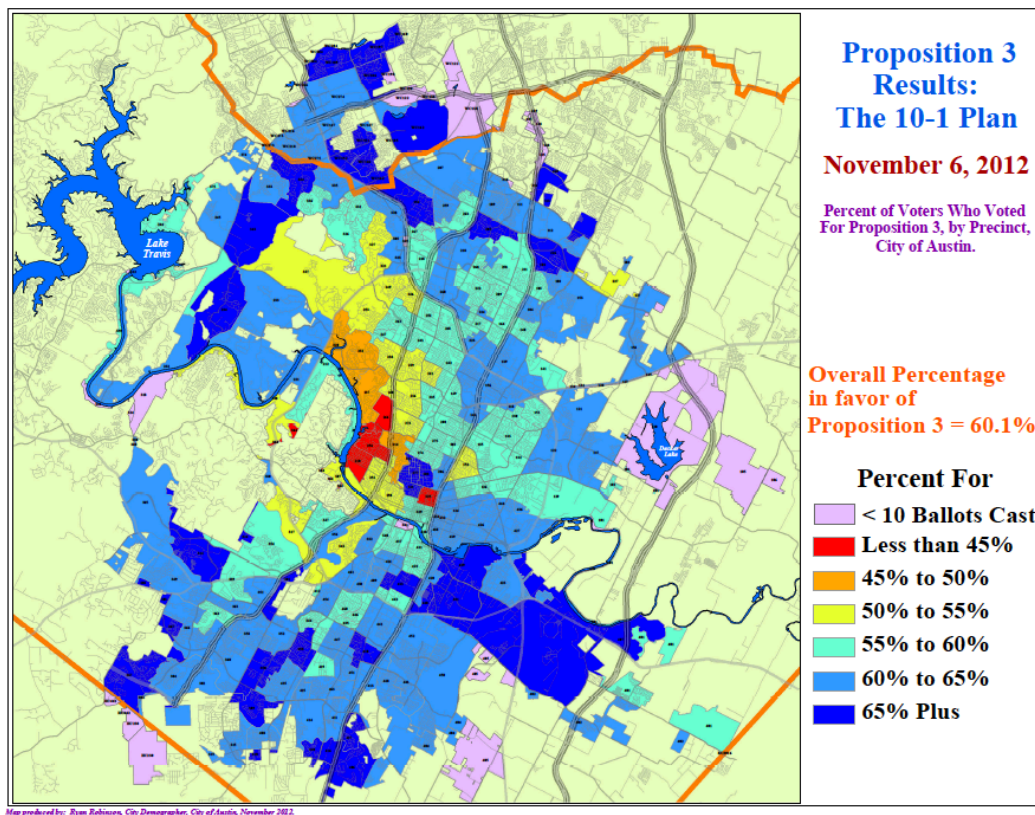


Commissioners:

After the hearing and some of the testimony you received on 11/14, I would like to offer you some context of the opaque dynamics that were going on before you.

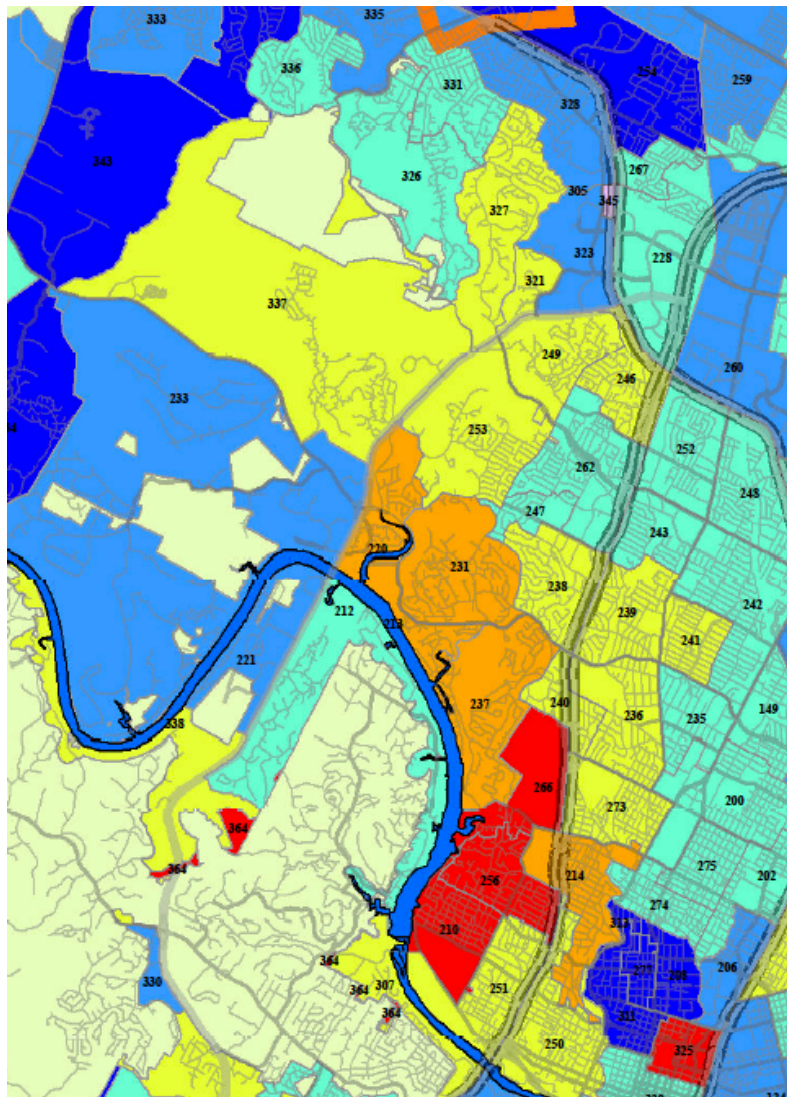
First, I think it might be instructive and revealing to show what the election results were for passage of 10-1 on the ballot:



This is available at: http://www.austintexas.gov/sites/default/files/files/Planning/Demographics/Prop_3_2012.pdf

You might notice in this map where 10-1 was decidedly unpopular and received less than 50% of the vote. It was only 9 precincts.

It is noteworthy that it was only 9 precincts in Austin where 10-1 received less than 50% of the vote, 7 of which are closely aligned with the long established and well organized City Hall at-large system. Two of those precincts are Pct. 220 and 231 from which you received a handful of organized speakers last night. A couple of others include Pct. 237 (Balcones/Highland Park West) and Pct. 214 Brykerwoods.



A handful of speakers last night mentioned they were from Pct. 220, in addition to mentioning their political party positions of leadership. Pct. 220 is actually more closely aligned with the shoreline Lake Austin river communities than Northwest Hills proper. Most of Northwest Hills supported 10-1. For the record, Pcts. 220, 231, 237, and 214 were about half of the precincts in Austin that did not support 10-1. These are nuanced points to be aware of, pointing out that it is appropriate for the Commission to be aware of for 'functional' election results, but not for political party allegiances, per the Charter.

Nevertheless, it is worthwhile to note the take home request from the Pct. 220 and Pct. 231 residents last night is that they want to remain in Dist. 10, precisely what the later presented NWAC map does, leaves them in Dist. 10.

On a similar note, a few meetings ago, in at least 2 of your meetings, residents of Pct. 240/237 (Highland Park West/Balcones) requested to be put in the same district with the Brykerwoods/Rosedale neighborhoods (214/273). One of their 'lines of reasoning' was that the age of the stock of housing in their neighborhoods was of similar age and much older than the housing west of them, for example in Cat Mountain (231) and The Courtyard (220) and further west. It is worthwhile to note that again the NWAC map honors that request by putting Highland Park West (240), Balcones (237), Brykerwoods (214), and Rosedale (273) together in Dist. 9.

Commissioners, having been a resident in all of those West Austin areas growing up, in addition to Central and South Austin later in life, over the course of 4 decades, I can say the above 7 to 9 precincts we are talking about are the ones that have controlled City Hall for decades with their 'Gentlemen's Agreements.' The residents of Tarrytown, Balcones Dr., Highland Park West, and even Brykerwoods are an entirely different kind of political animal than the people of Northwest Hills and further west and north. I hope you will be able to recognize that and adjust your map accordingly.

Oh, and by the way, most of the people with deer in their neighborhoods in Austin actually like the deer and city ordinance now allows for humane treatment of them, whereas as recently as a year ago it did not.

Thanks again,
Brad Parsons,
Austin, TX.

P.S. Just so you know in 40 years I have lived in and gone to school in all parts of Austin: West Austin, Central Austin, South Austin, Northwest Austin, and went to high school in East Austin and Williamson County and to college in Central and South Austin.