

ORDINANCE NO. \_\_\_\_\_

1 AN ORDINANCE AMENDING ORDINANCE NO. 020801-91, WHICH  
2 ADOPTED THE UPPER BOGGY CREEK COMBINED NEIGHBORHOOD  
3 PLAN AS AN ELEMENT OF THE IMAGINE AUSTIN COMPREHENSIVE  
4 PLAN, TO CHANGE THE LAND USE DESIGNATION ON THE FUTURE LAND  
5 USE MAP FOR PROPERTY LOCATED AT 4505 NORTH I.H. 35  
6 NORTHBOUND SERVICE ROAD.

7  
8 BE IT ORDAINED BY THE CITY COUNCIL OF THE CITY OF AUSTIN:  
9

10 PART 1. Ordinance No. 020801-91 adopted the Upper Boggy Creek Combined  
11 Neighborhood Plan as an element of the Imagine Austin Comprehensive Plan.

12 PART 2. Ordinance No. 020801-91 is amended to change the land use designation from  
13 single family use to office use for the property located at 4505 North I.H. 35 Northbound  
14 Service Road on the future land use map attached as Exhibit "A" and incorporated in this  
15 ordinance, and described in File NPA-2013-0012.01 at the Planning and Development  
16 Review Department.

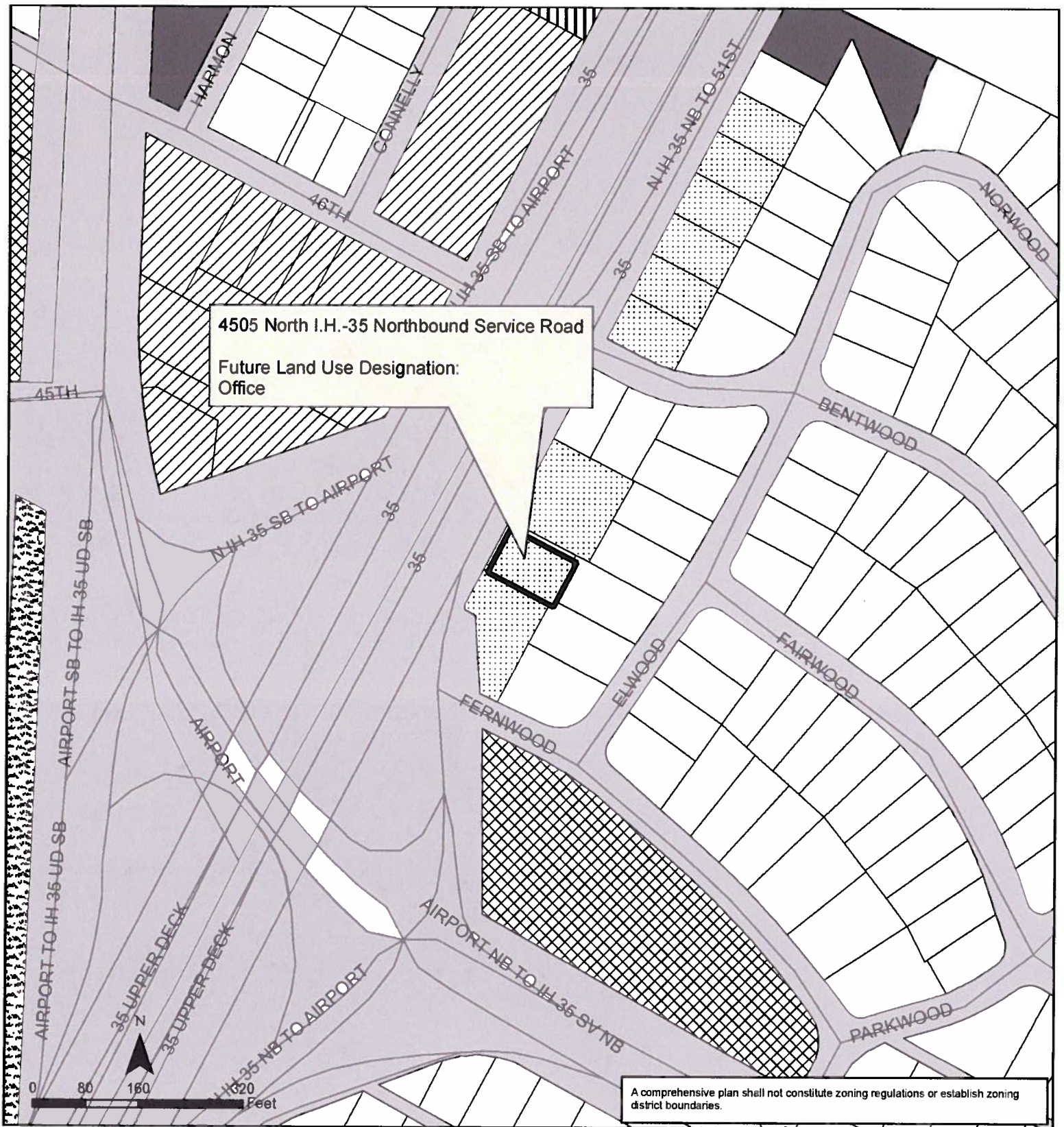
17 PART 3. This ordinance takes effect on \_\_\_\_\_, 2013.

18 PASSED AND APPROVED

19  
20 §  
21 §  
22 \_\_\_\_\_, 2013 § \_\_\_\_\_  
23 Lee Leffingwell  
24 Mayor  
25  
26

27 APPROVED: \_\_\_\_\_  
28 Karen M. Kennard  
29 City Attorney

ATTEST: \_\_\_\_\_  
Jannette S. Goodall  
City Clerk



## Exhibit A

### Upper Boggy Creek Neighborhood Planning Area

### Amendment NPA-2013-0012.01

This product is for informational purposes and may not have been prepared for or be suitable for legal, engineering, or surveying purposes. It does not represent an on-the-ground survey and represents only the approximate relative location of property boundaries.

This product has been produced by the Planning and Development Review for the sole purpose of geographic reference. No warranty is made by the City of Austin regarding specific accuracy or completeness.



City of Austin  
Planning and Development Review Department  
Created on 10/23/2013, by: meredithm

Future Land Use	
	Single-Family
	Multi-Family
	Commercial
	Mixed Use
	Office
	Civic
	Recreation & Open Space
	Transportation