

Eliza Spring Outlet Daylighting Project – 60% Design



LIZA COLUCCI, ENVIRONMENTAL SCIENTIST

CITY OF AUSTIN
WATERSHED PROTECTION DEPARTMENT



Federally Endangered Salamanders



Barton Springs Salamander

Eurycea sosorum



Austin Blind Salamander

Eurycea waterlooensis



HCP – USFWS 10(a)1(B) permit



- Allows the City of Austin to keep Barton Springs Pool open for recreation despite it being endangered species habitat
- 20 yr permit
- MOU between PARD and WPD
- Includes Take of individuals
- Conservation measures
 - Improve flow regimes
 - Maintain ecosystem health
 - Re-vegetate
 - Remove concrete

Eliza Spring Modifications



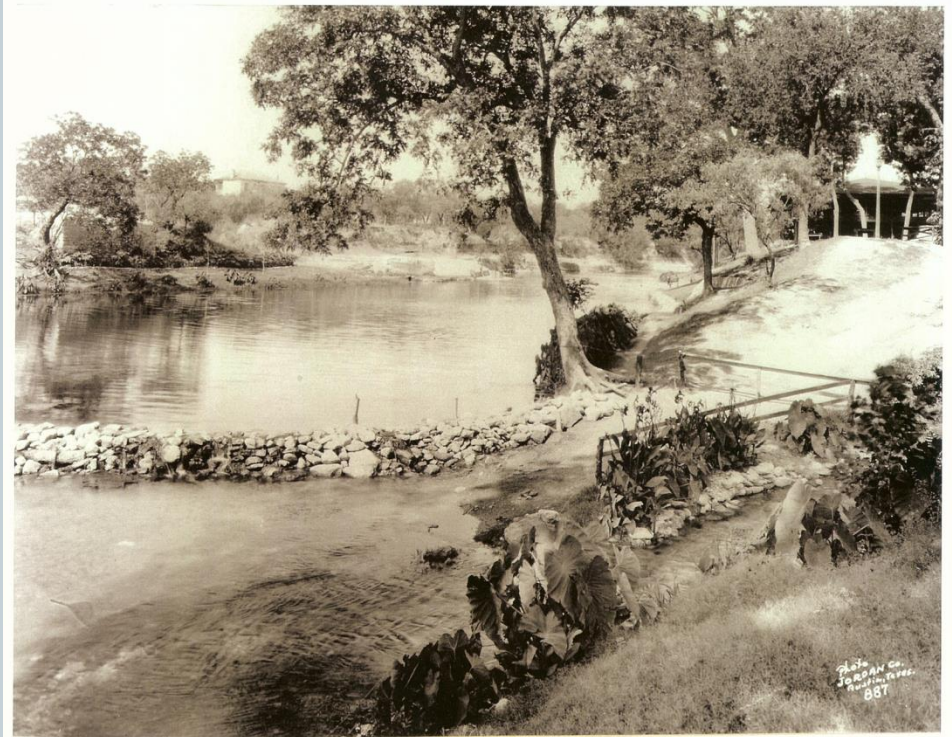
- Eliza Spring
 - Amphitheater built
 - Outflow buried
 - Concrete floor
 - Salamander habitat



Eliza Spring – Flowing Water



PICA 00987, Austin History Center, Austin Public Library



Barton Springs, circa 1924. Note the man-made dam that had to be rebuilt each season to create deep water for swimming.

[AUSTIN HISTORY CENTER – CO 1803]

Eliza Daylighting – Keyhole Opening



Austin History Center, Austin Public Library

60% Major Design Concepts

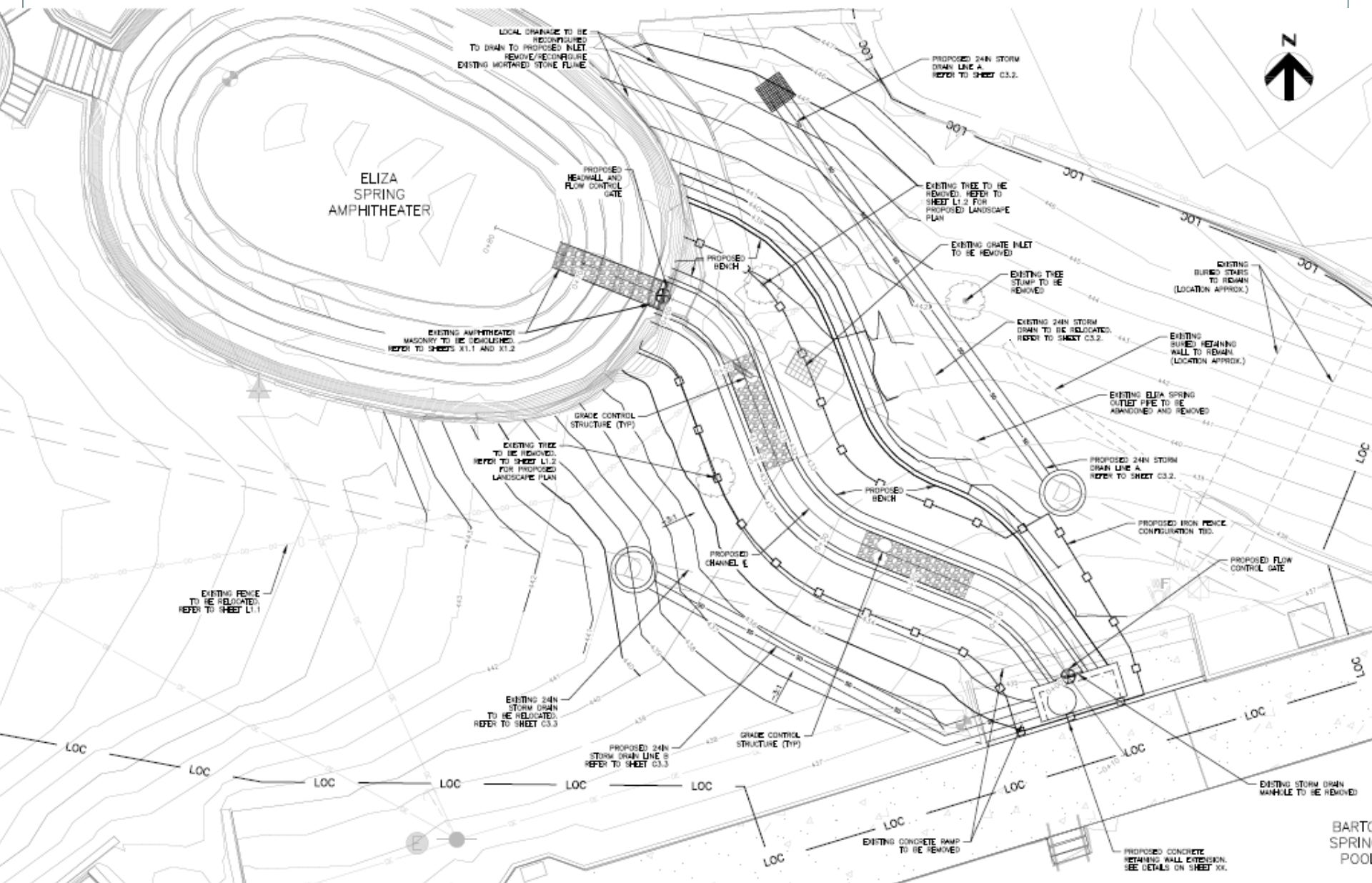


- Grading of banks
- Native plantings
- Fence relocation
- Existing storm drain redirection

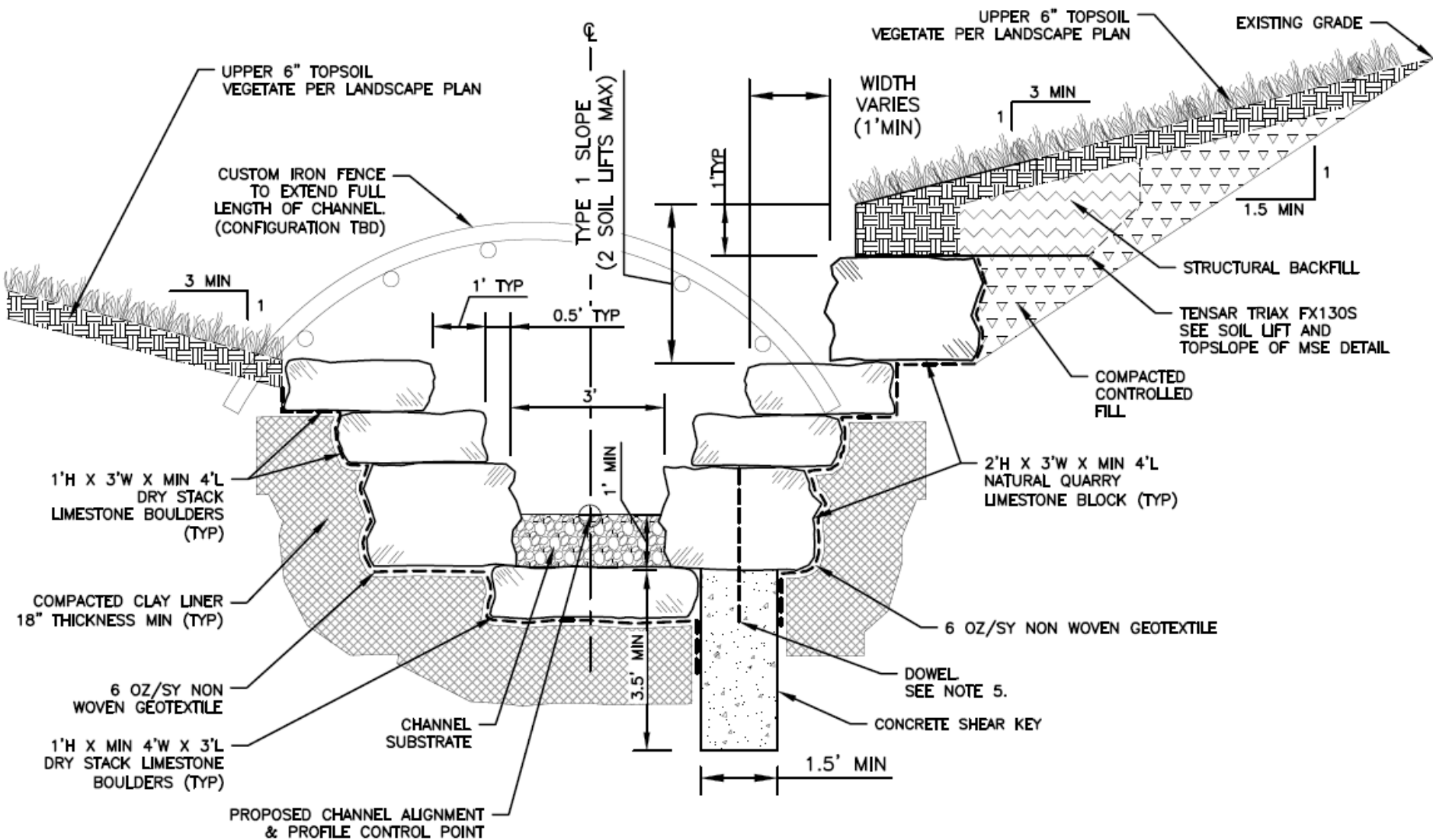
60% Major Design Concepts



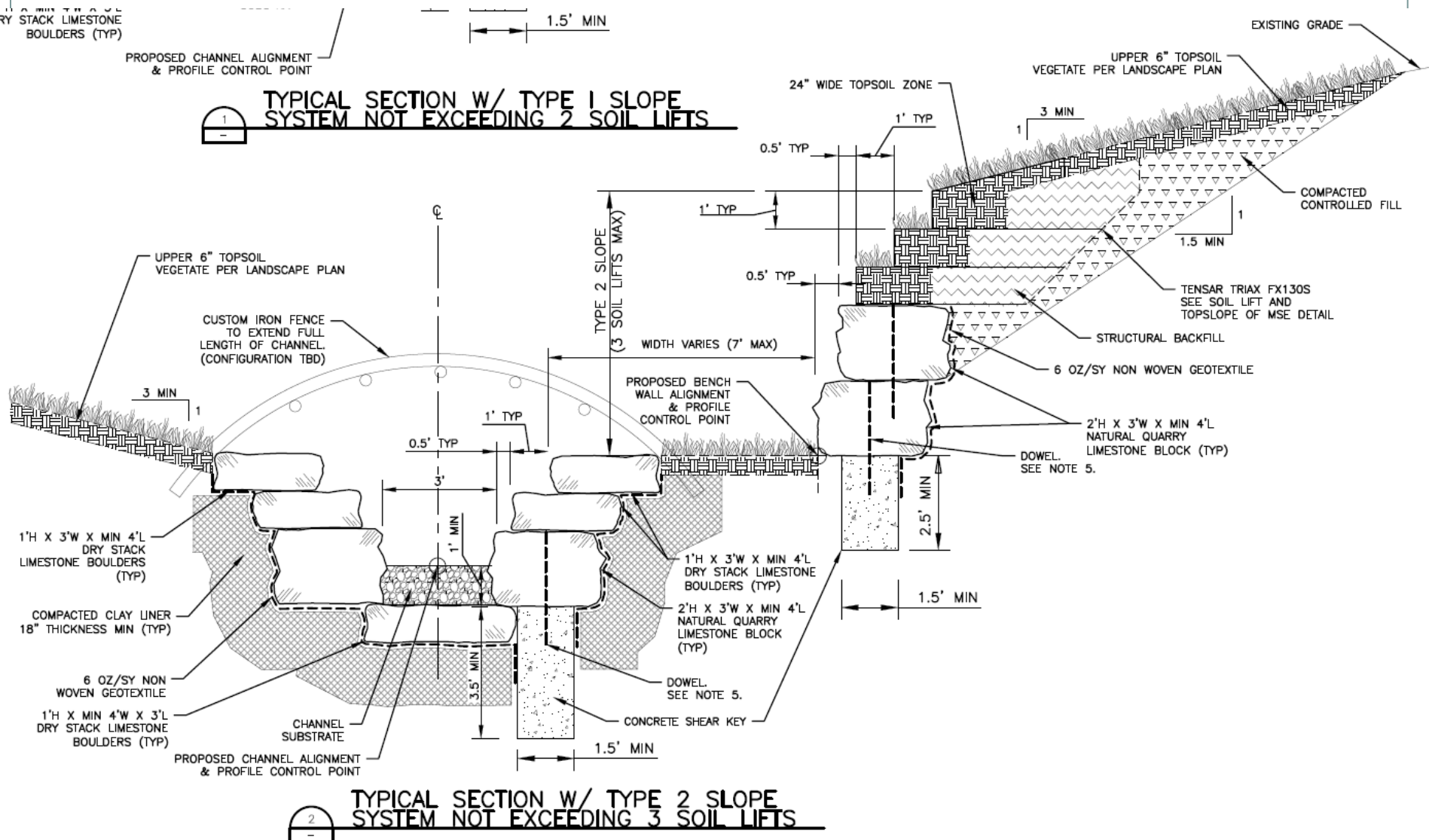
- **Grading of banks**
- Native plantings
- Fence relocation
- Existing storm drain redirection



BARTO
SPRING
POOL



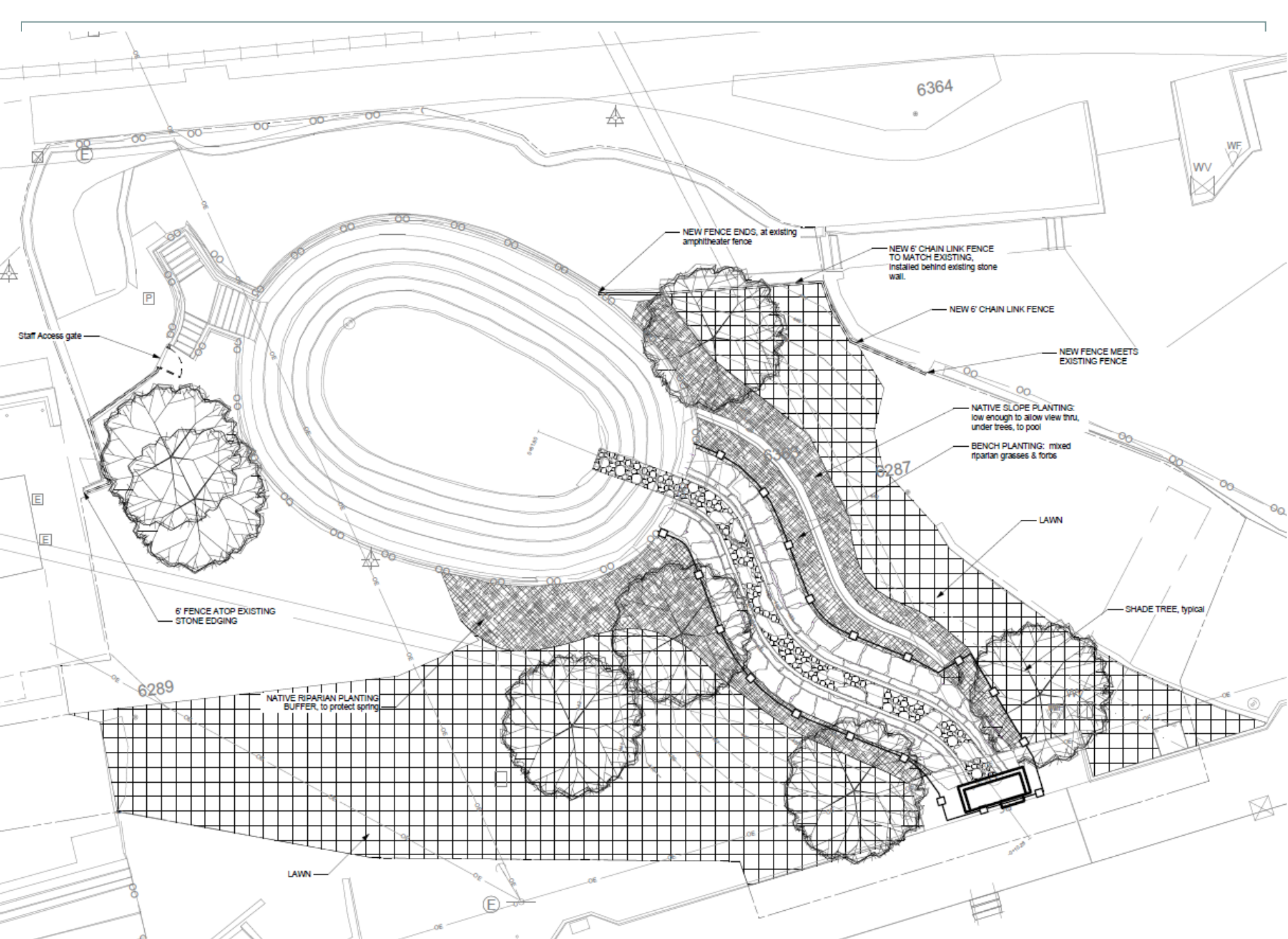
**TYPICAL SECTION W/ TYPE 2 SLOPE
SYSTEM NOT EXCEEDING 3 SOIL LIFTS**



60% Major Design Concepts



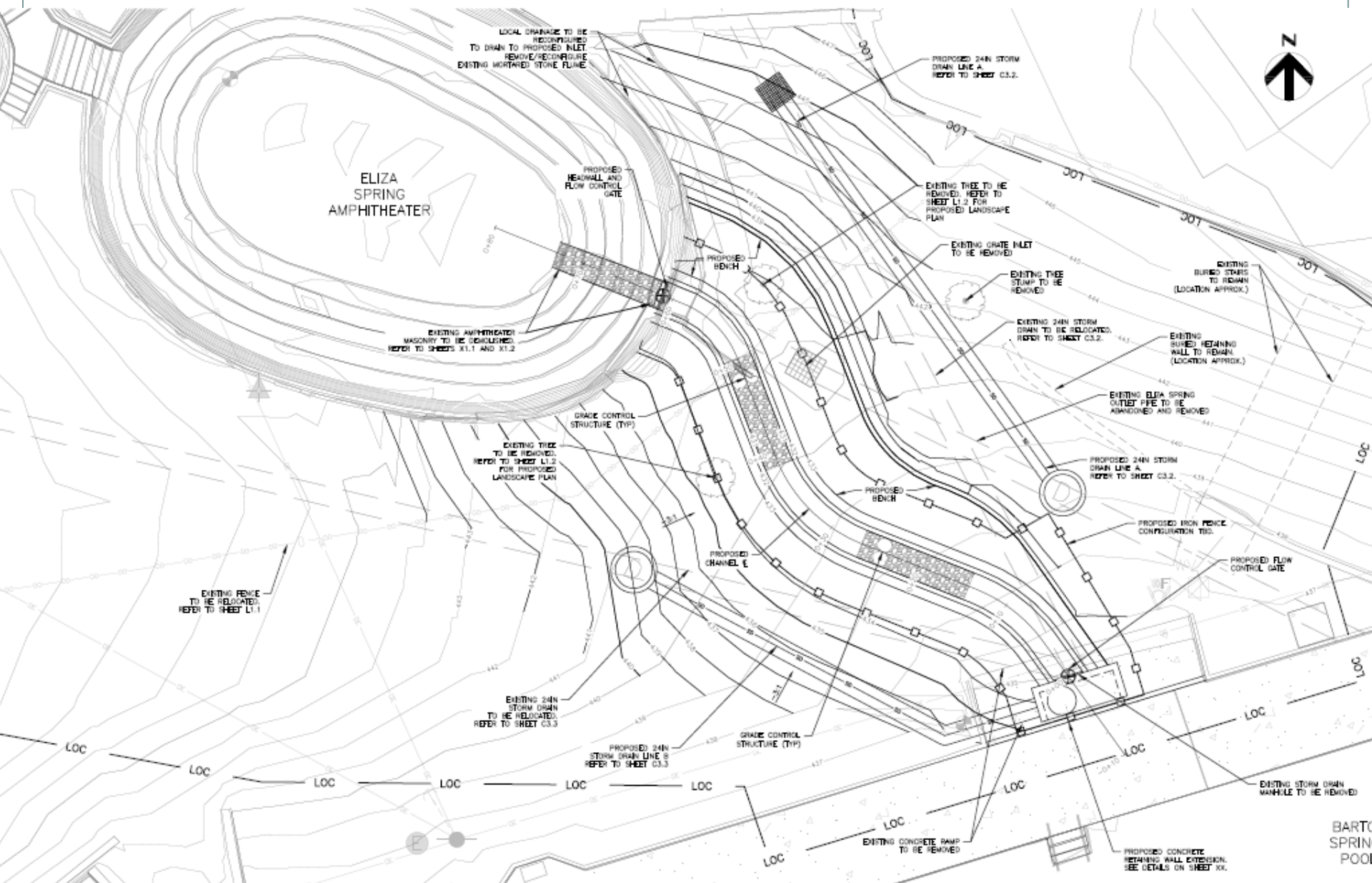
- Stream channel basic construction
- Grading of banks
- **Native plantings**
- **Fence relocation**
- Existing storm drain redirection



60% Major Design Concepts



- Stream channel basic construction
- Grading of banks
- Native plantings
- Fence relocation
- **Existing storm drain redirection**



BART
SPRING
POOL



- <http://www.austintexas.gov/departments/eliza-spring-daylighting>
- Liza.colucci@austintexas.gov
- Next public meeting: Wednesday, March 19th, 2014
- 90% design: Spring 2014