

**ORDINANCE NO. 20140327-023**

**AN ORDINANCE AMENDING CITY CODE SECTION 12-4-64(D) TO ADD 20 MILES PER HOUR SCHOOL ZONES ON SEGMENTS OF TANGLEBRIAR TRAIL AND EL SALIDO PARKWAY FOR STUDENTS ATTENDING PURPLE SAGE ELEMENTARY SCHOOL; AND TO PROVIDE FOR EMERGENCY PASSAGE.**

**BE IT ORDAINED BY THE CITY COUNCIL OF THE CITY OF AUSTIN:**

**PART 1.** Section 12-4-64(D) (*Table of Speed Limits*) is amended to add:

Tanglebriar Trail from 20 feet south of Bobcat Trail to 52 feet north of El Salido Parkway (20 mph for students attending Purple Sage Elementary School)

El Salido Parkway from 49 feet east of Aloe Vera Trail to 53 feet west of Morning Star Trail (20 mph for students attending Purple Sage Elementary School)

**PART 2.** The amendments made in this ordinance are based on the results of a traffic engineering investigation, or "speed study," attached as Exhibit A.

**PART 3.** The amendment made in this ordinance shall be incorporated in alphabetical order and the existing entries reordered accordingly.

**PART 4.** Council finds that school is in session, and the need for a school zone at this site constitutes an emergency. Because of this emergency, this ordinance takes effect immediately on its passage for the immediate preservation of the public peace, health and safety.

**PASSED AND APPROVED**

March 27, 2014

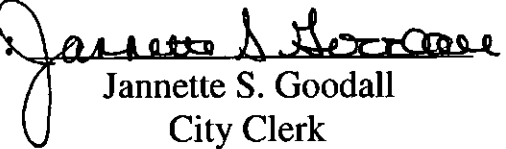
§  
§  
§

  
Lee Jeffingwell  
Mayor

**APPROVED:**

  
Karen M. Kennard  
City Attorney

**ATTEST:**

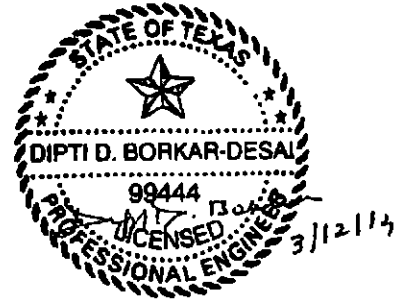
  
Jannette S. Goodall  
City Clerk

## EXHIBIT A



### MEMORANDUM

**To:** Traffic Study Files  
**From:** Austin Transportation Department  
**Date:** March 12, 2014  
**Subject:** Reduced Speed School Zone Investigation  
**Location:** Tanglebriar Trail, El Salido Parkway



**Date(s) of Previous Investigation:** None

A traffic engineering investigation has been conducted to determine if the existing reduced speed school zones are appropriate on Tanglebriar Trail and El Salido Parkway.

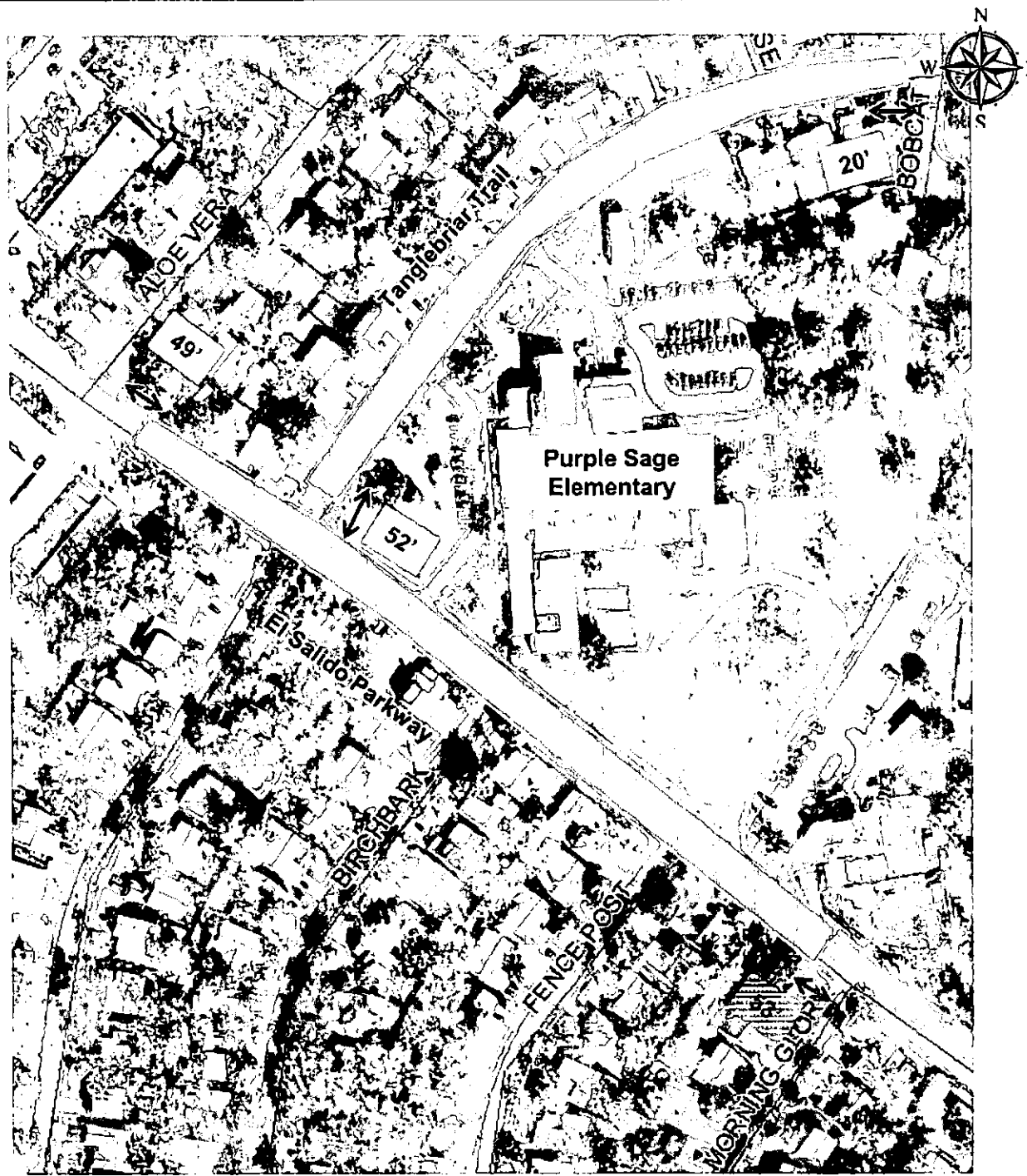
Williamson County prior to annexation of this area by City of Austin implemented a speed limit of 20 miles per hour, during certain times on Tanglebriar Trail and El Salido Parkway for students attending Purple Sage Elementary School. These speed limits have been reviewed and found to be appropriate.

#### Recommendation

The Austin Transportation Department recommends adopting speed limits implemented by Williamson County to reflect the existing field conditions as follows:

- Reduced speed school zone of 20 miles per hour (mph) on Tanglebriar Trail from 20 feet south of Bobcat Trail to 52 feet north of El Salido Parkway
- Reduced speed school zone of 20 miles per hour (mph) on El Salido Parkway from 49 feet east of Aloe Vera Trail to 53 feet west of Morning Star Trail.

Figure 1 presents the limits of existing speed zones.



Existing 30 MPH

Existing 20 MPH School Zone (during peak school times)

**Figure 1: Study Area**