

- The following is an overview of the content that is proposed to be included in the 2014 Bicycle Plan Update

WHY UPDATE THE BICYCLE PLAN?

Creating the future Austin



City of Austin 2014 Bicycle Master Plan Update

March 21, 2014

- A brief explanation of why this update is important

Current Bicycle Planning Efforts: Urban Trails Master Plan and Bike Plan Update



- The Bike plan builds on existing plans with latest influences from Imagine Austin, the NACTO bikeway design guide, Austin's participation in the Green Lane Project, and Austin's Think Bike event

Bicycling and Active Transportation Support Imagine Austin Plan



Priority Program #1:
Invest in Compact

Priority Program #8:
Align Code

Priority Program #3:
Workforce Development

Priority Program #5:
Creative Economy

Priority Program #2:
Sustainable Water

Priority Program #4:
Green Infrastructure

Priority Program #6:
Household Affordability


Priority Program #7:
Healthy Austin



City of Austin 2014 Bicycle Master Plan Update

March 21, 2014

- Integrating Imagine Austin plan into 2014 Bicycle Plan
- Bicycling is integral in all 8 priority programs



IMAGINEAUSTON
COMPREHENSIVE PLAN
Vibrant. Livable. Connected.

City Council Adopted
June 15, 2012

A Shift in Focus:

~~“To Create and Promote the best environment for the friendly co-existence of bicycle riders and other transportation users in Austin”~~

“To maximize the contribution of bicycling to Austin’s quality of life”

March 21, 2014

- Update the vision for the bicycle plan
- This is a very important change in focus and is the foundation for our approach to the conversation for the 2014 update

HOW ARE WE APPROACHING THE UPDATE?

Elements of the 2014 Bicycle Plan Update



City of Austin 2014 Bicycle Master Plan Update

March 21, 2014

- An overview of our approach and fundamental elements that make the 2014 Bicycle Plan a significant change to the the 2009 plan

The Bicycle Plan is a 5 E's Approach

Engineering	Education	Encouragement	Enforcement	Evaluation
 <ul style="list-style-type: none"> • Updates for all ages and abilities network • Includes cycle tracks recommendations 	 <ul style="list-style-type: none"> • 45,000 children educated annually on bicycle safety. • 300 + taught in Defensive Cycling annually. 	 <ul style="list-style-type: none"> • 1,500 bike light sets distributed in 2013. • Policies to encourage developers to build showers, locker rooms, and secure bicycle parking. 	 <ul style="list-style-type: none"> • Almost 700 citations given to cyclists annually by APD (since 2007) • Vulnerable Road User Campaign 	 <ul style="list-style-type: none"> • 2% of Austinites use a bicycle to get to work; compared to a 1% national average (2011 US Census). • 6% in Central City



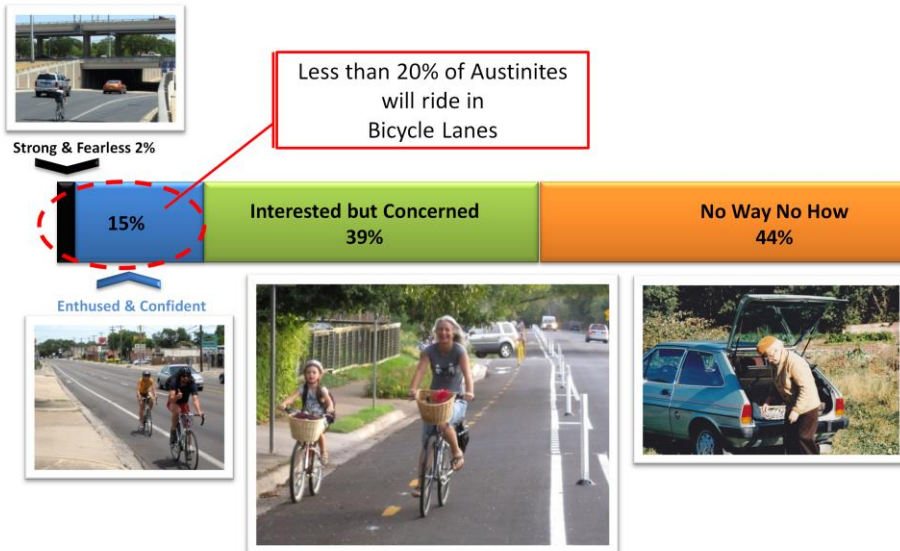
City of Austin 2014 Bicycle Master Plan Update

March 21, 2014

- The bicycle plan is a 5 E's plan.
- The most significant update from the 2009 Plan, and the content of this presentation, will be in the Engineering / Infrastructure recommendations and approach, the other sections will get minor updates

Four Types of Transportation Cyclists in Austin

By Proportion of Population



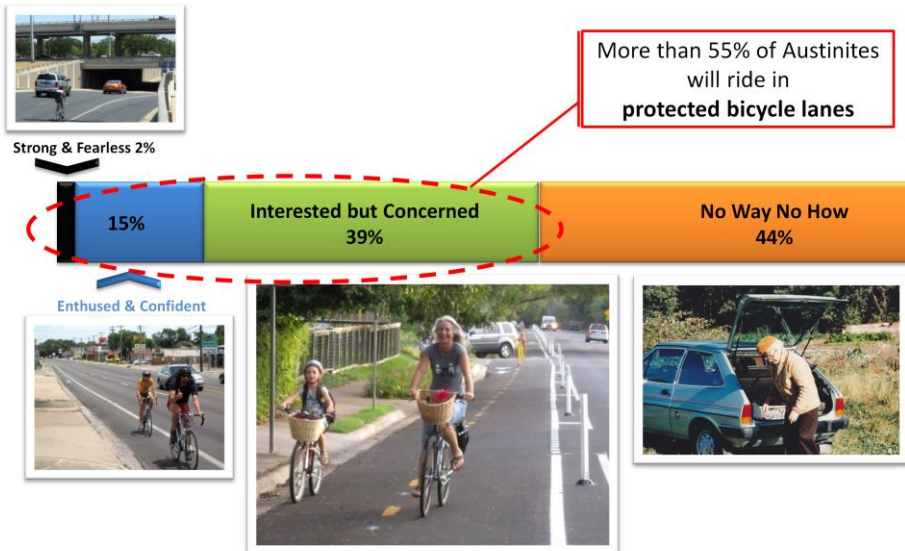
City of Austin 2014 Bicycle Master Plan Update

March 21, 2014

- Existing bicycle lanes based infrastructure attracts less than 20% of Austin's population

Four Types of Transportation Cyclists in Austin

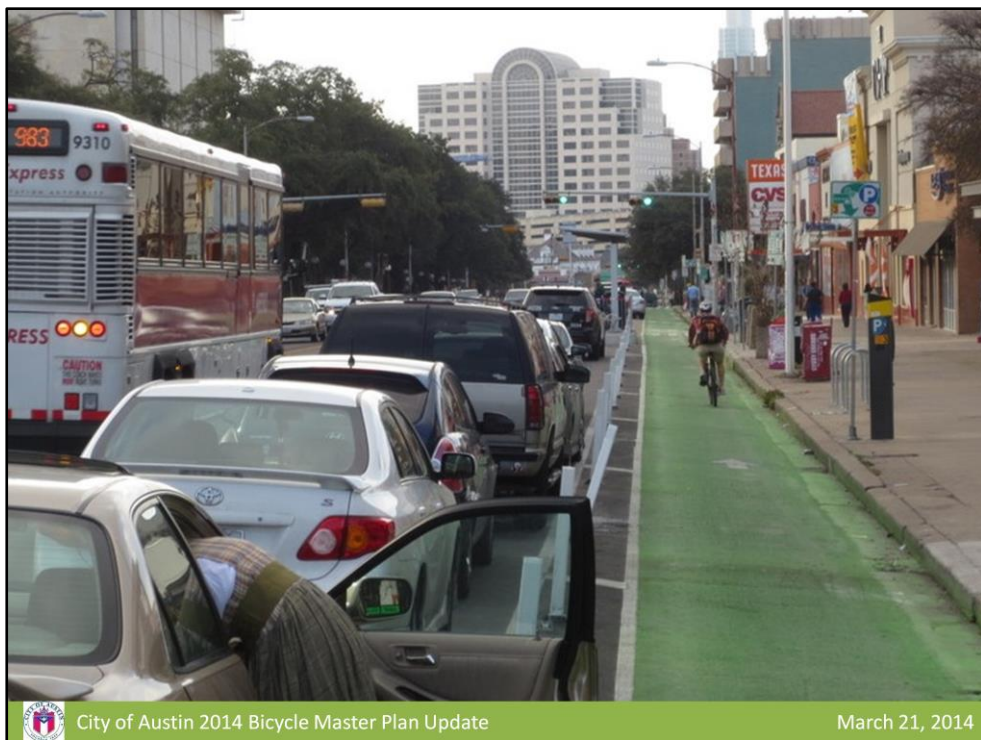
By Proportion of Population



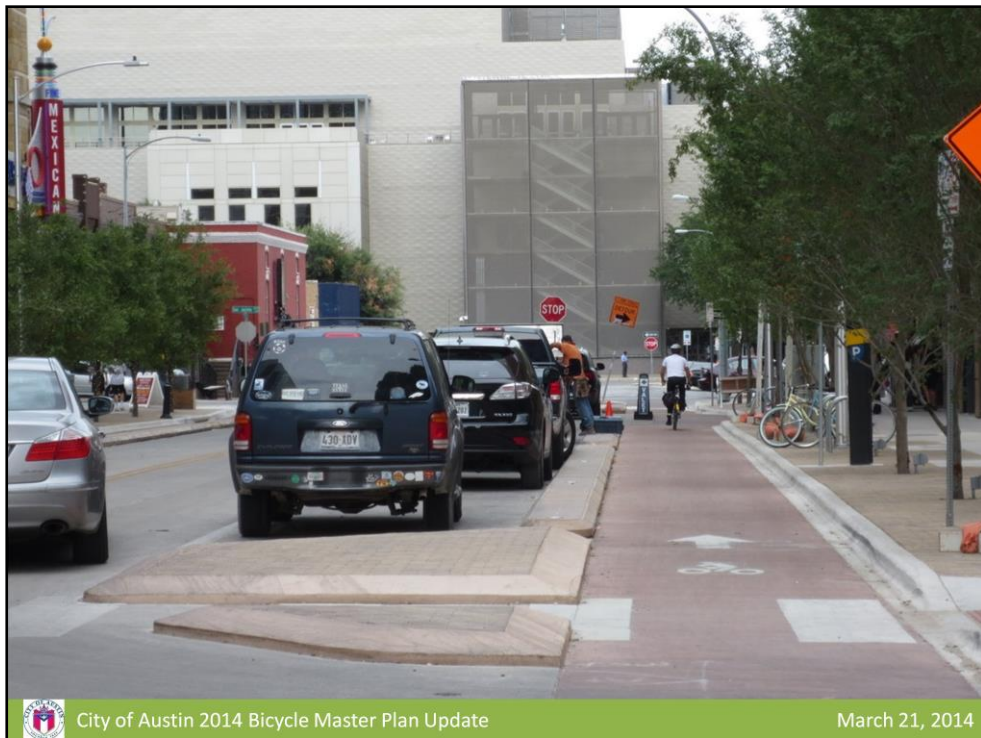
City of Austin 2014 Bicycle Master Plan Update

March 21, 2014

- A network of protected bicycle lanes will attract 55+% of the population. If we want a significant increase in bicycling and the benefits it brings to the City and its citizens, we will have to pursue protected networks.



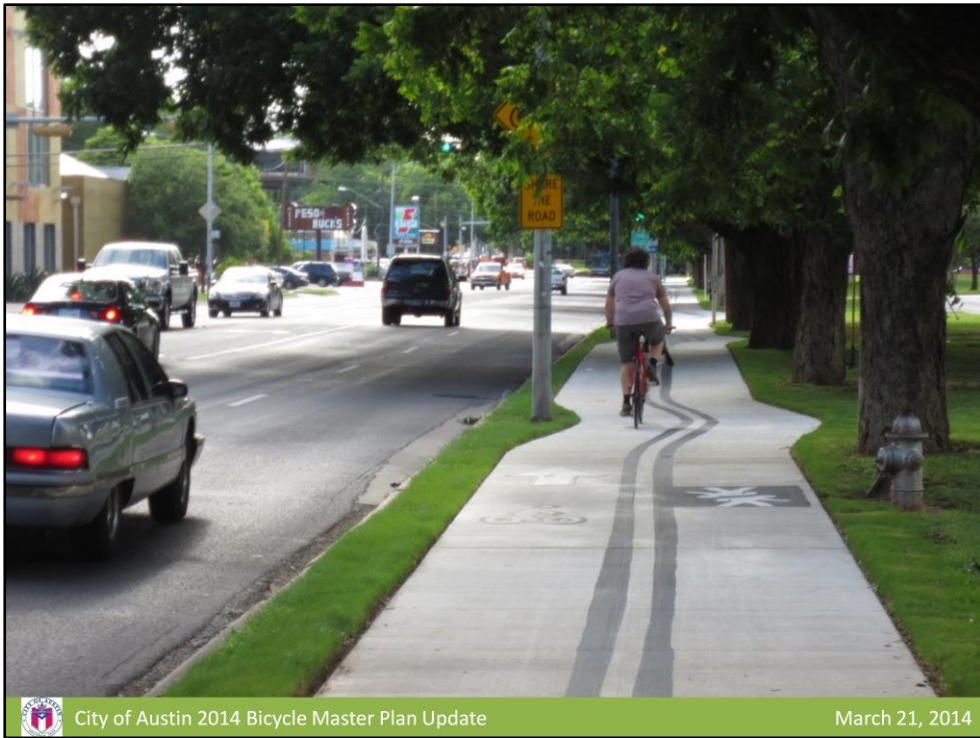
- Guadalupe next to Campus



- A newly reconstructed block of 3rd Street downtown

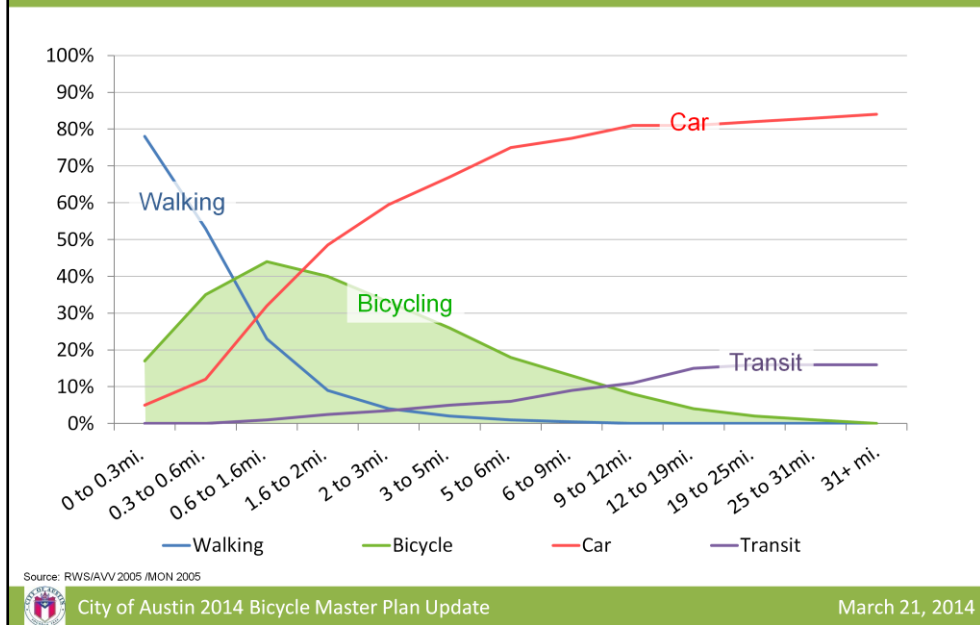


- Bluebonnet Lane Cycle Track in south Austin adjacent to Zilker Elementary

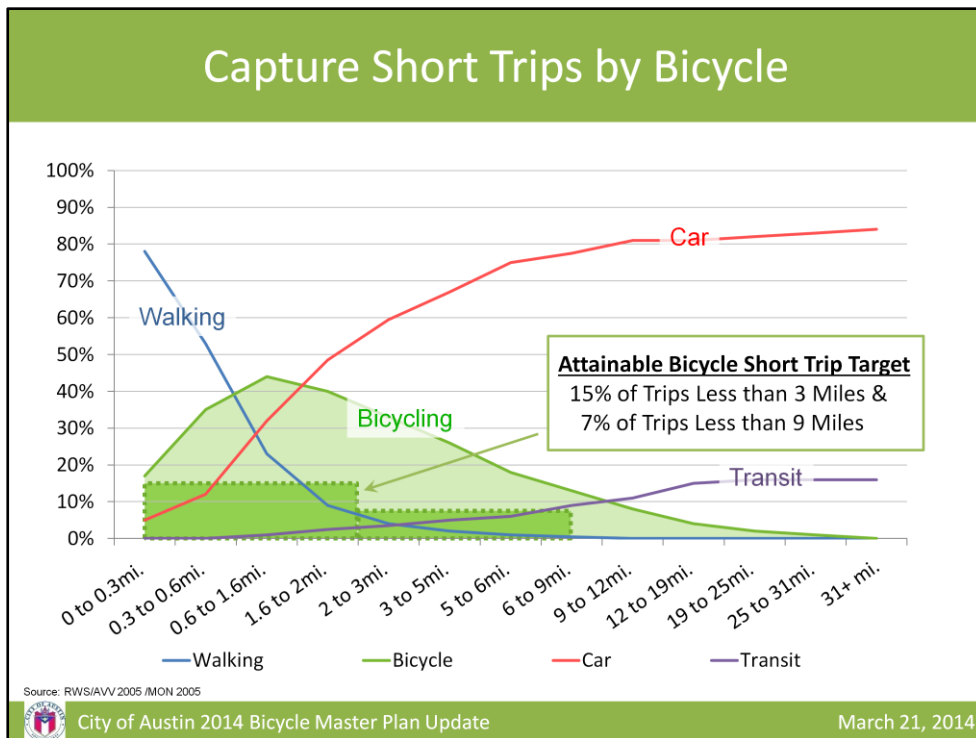


- Barton Springs Road

Capture Short Trips by Bicycle



- Each mode is more and less useful at different trip lengths. For short distances walking and bicycling are best, for longer distances cars and transit are better
- Given a safe bicycle network, trips in the 1-3 mile range can be the mode with the largest mode share.
- Targeting infrastructure investments to capture short trips is critical



- The green shaded boxes show the Bicycle Plan updates trip capture targets. The plan will capture the impact of achieving these targets.

Spider Diagram of Short Car-Trips (0-3 mile)

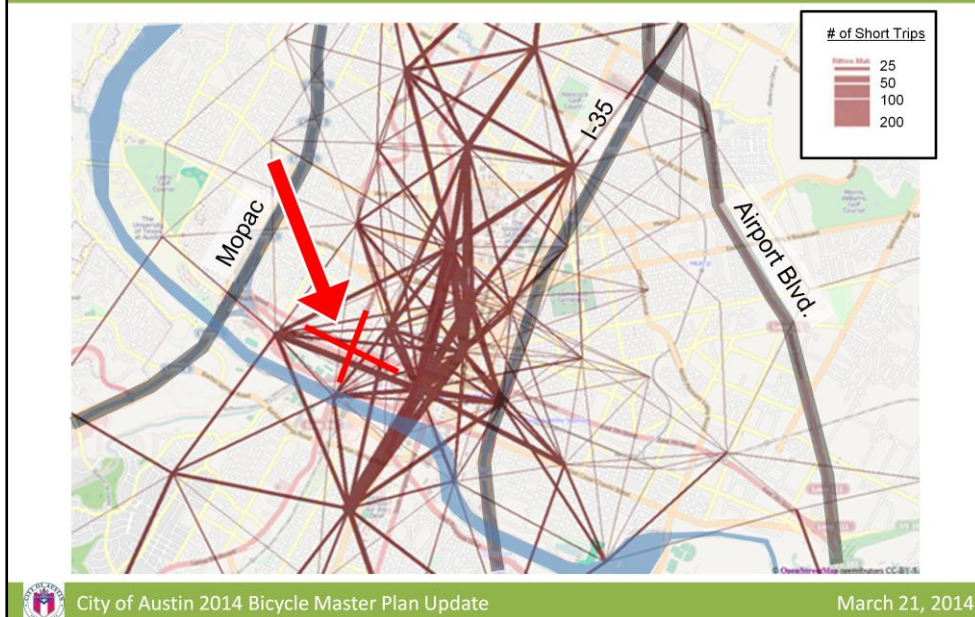


City of Austin 2014 Bicycle Master Plan Update

March 21, 2014

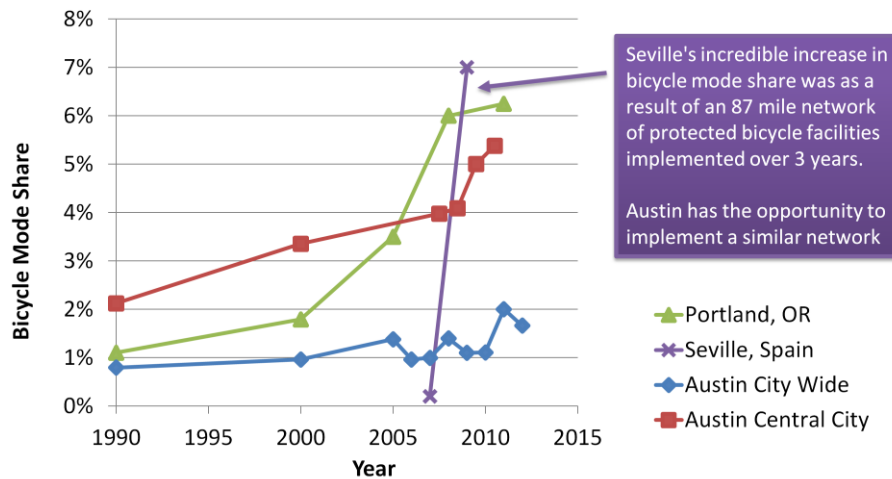
- You can see most of the short trips occur in the central city.
- They occur in every direction but you can see a north-south patterns as you would expect in our city.

Intersection of 5th/6th and Lamar



- This notoriously congested intersection has 50% of short trips going through it, a portion of which are perfect candidates to be converted to bicycle trips.

Rise of Cycling in Over Time in Portland, Seville, and Austin



City of Austin 2014 Bicycle Master Plan Update

March 21, 2014

- Seville was able to achieve a higher bicycle mode share than Portland, OR in only 3 years due to the implementation of an 87 mile Dutch inspired protected facility network for \$43 million.

WHAT IS THE PLAN MADE OF?

Our strategic focus

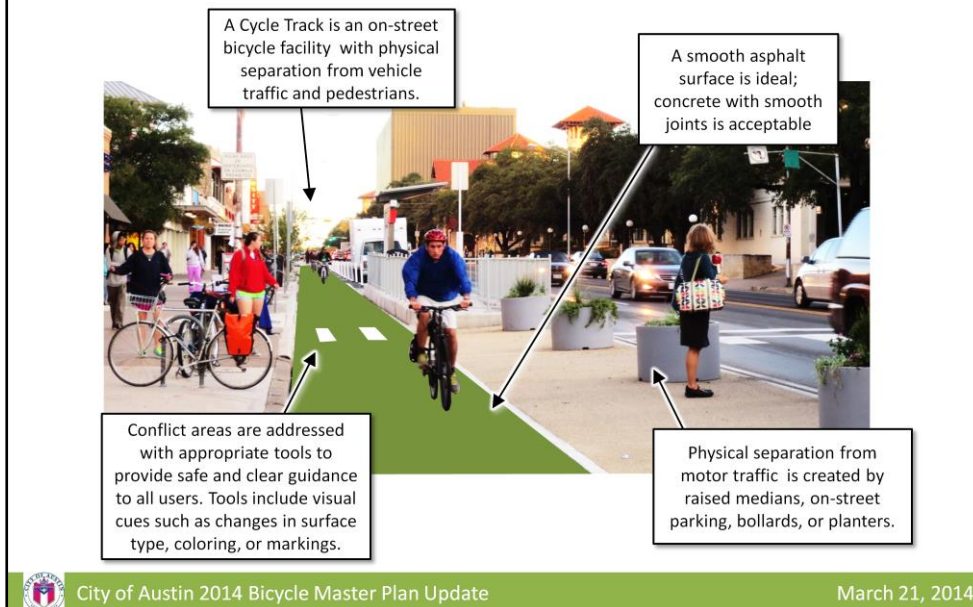


City of Austin 2014 Bicycle Master Plan Update

March 21, 2014

- An overview of the detailed recommendations of the 2014 Plan Update

Toolbox: Cycle Tracks



- Visual guide of the principal tools used in the plan

Toolbox: Cycle Tracks

Cycle Tracks may be one-way or **two-way** and may be at street level, at sidewalk level, or at an intermediate level.



City of Austin 2014 Bicycle Master Plan Update

March 21, 2014

- Visual guide of the principal tools used in the plan

Toolbox: Quiet Streets

Quiet Streets are traffic calmed corridors that provide a comfortable environment for all ages and abilities.

Provide the opportunity for green streets elements such as tree plantings, rain gardens, and reductions in impervious cover.

Motor vehicle speed and volumes are managed to achieve safety and comfort for all ages or abilities.



Route guidance is provided through pavement markings and signage.

Target Speed and Volume:

- 25 mph or less (20 mph preferred)
- 1,500 vehicles per day preferred; up to 3,000 vehicles per day in limited areas.

Target Locations:

- **Residential streets** where traffic calming is desired.
- Commercial corridors where heavy motor vehicle traffic is less desired.



- Visual guide of the principal tools used in the plan

Toolbox: Intersection Treatments

INTERSECTION TREATMENTS help users comfortably cross major streets on key routes.

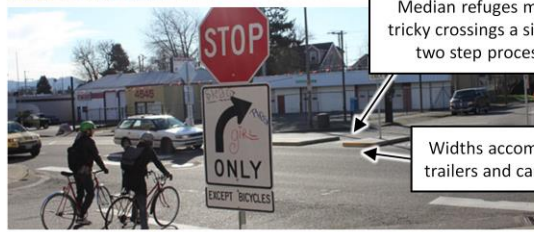
Intersection Treatments Include:

- Crossing signs and markings
- Median refuge islands and curb extensions.
- Crossing devices including actuated warning beacons and signals.



Crossing times should account for all ages.

Actuated warning beacons and signals make the toughest crossings safe and comfortable



Median refuges make tricky crossings a simple two step process

Widths accommodate trailers and cargo bikes



- Visual guide of the principal tools used in the plan

Creating a Network:



City of Austin 2014 Bicycle Master Plan Update

March 21, 2014

- Austin's approach will involve all of these facility types to form one all ages and abilities network
- Our street network does not support reliance on only one of these facility types

Creating a Network:



Network Principles

- Safe
- Direct
- Cohesive
- Comfortable
- Attractive



City of Austin 2014 Bicycle Master Plan Update

March 21, 2014

- The guiding principles of a quality bicycle network

Creating a Network:



The 8 to 80 Test:



*An **8 year old** traveling with an **80 year old** should be able to traverse the city **comfortable and safely.***



City of Austin 2014 Bicycle Master Plan Update

March 21, 2014

- The plan proposes to hold our network to the 8 to 80 test

Network Design Parameters

Bicycle design should take into account the cyclist's point of view

Design Speed

- The network design speed will be accommodate commuter cyclists.
- Typical speeds will be 10-15 MPH

Design Bicycle

- Designs will accommodate tandems, trail-a-bikes, trailers and cargo bikes.

Network Density

- Space routes every $\frac{1}{2}$ - $\frac{3}{4}$ mile where short trips are most common (in the central city and near transit stations) with increased spacing further away from these areas.
- Ensure access to residences, businesses, and employment while providing the largest return on infrastructure investment.



- Our network design parameters

On-Street Bicycle Facility Guidance

Speed and Volume Criteria

		Average Annual Daily Traffic (vehicle per day)		
		Less than 3,000	3,000-9,999	10,000+
85th Percentile	< or =30	Shared *	Bike Lane	Buffered
Speed (MPH)	31-40	Bike Lane	Buffered	Protected
Measured or	41-50	Buffered	Protected	Protected
Projected	> 50	Protected	Protected	Protected

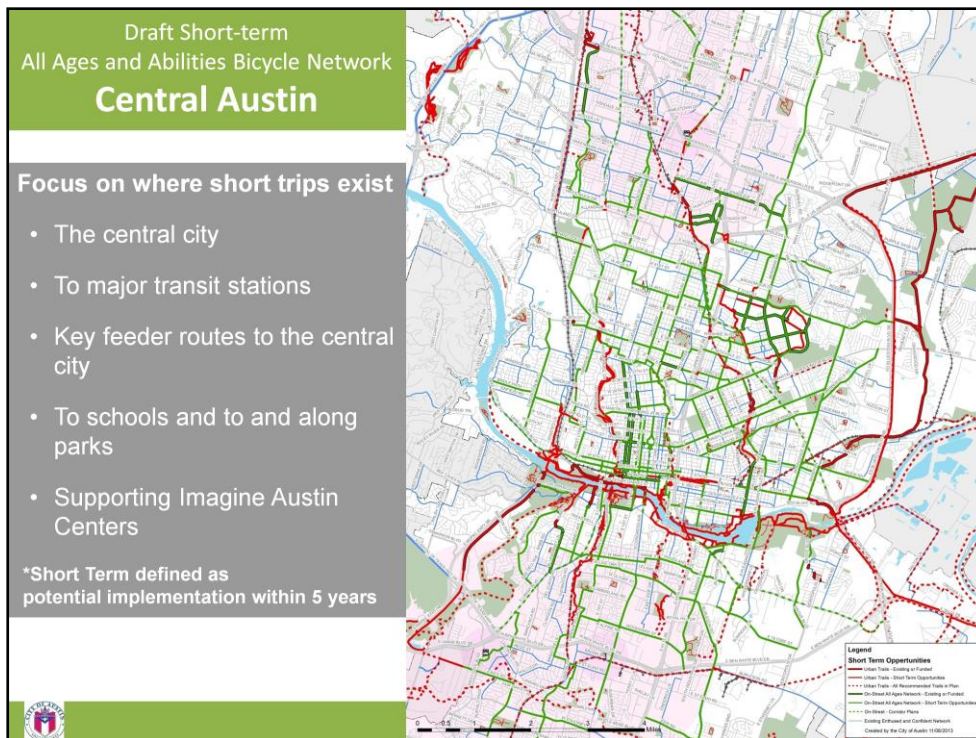
*Local streets that are important for the all ages and abilities network with less than 3,000 vpd and 30 MPH should be treated as necessary to meet the performance guidelines for Quiet Streets.

Special Consideration Will be Given To

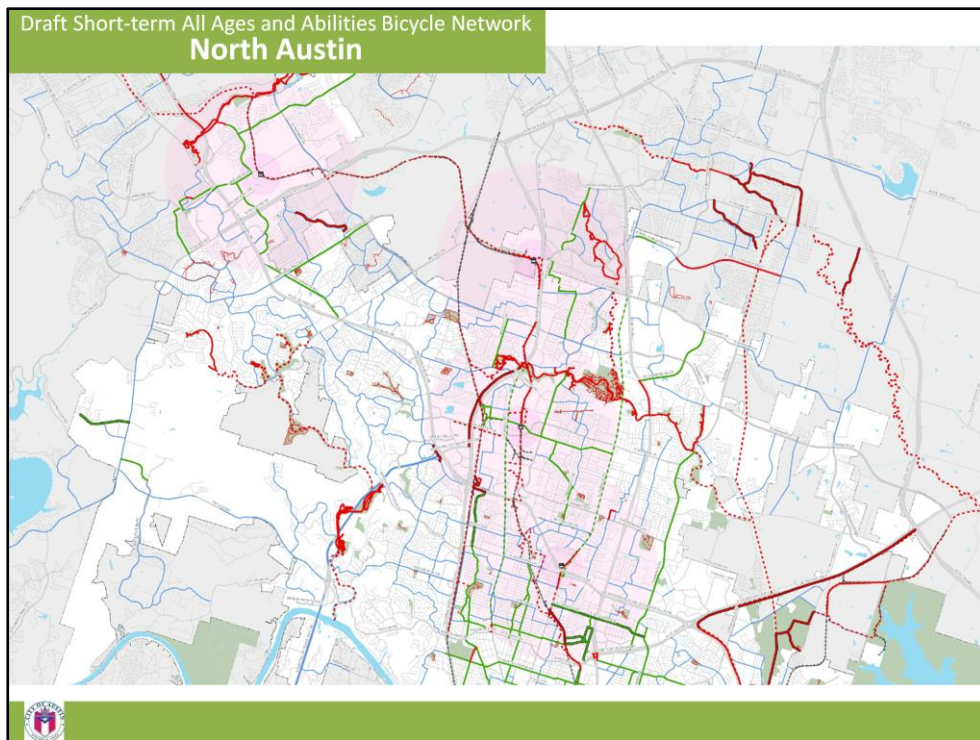
- On-street parking pressures
- Delivery activity
- Network context



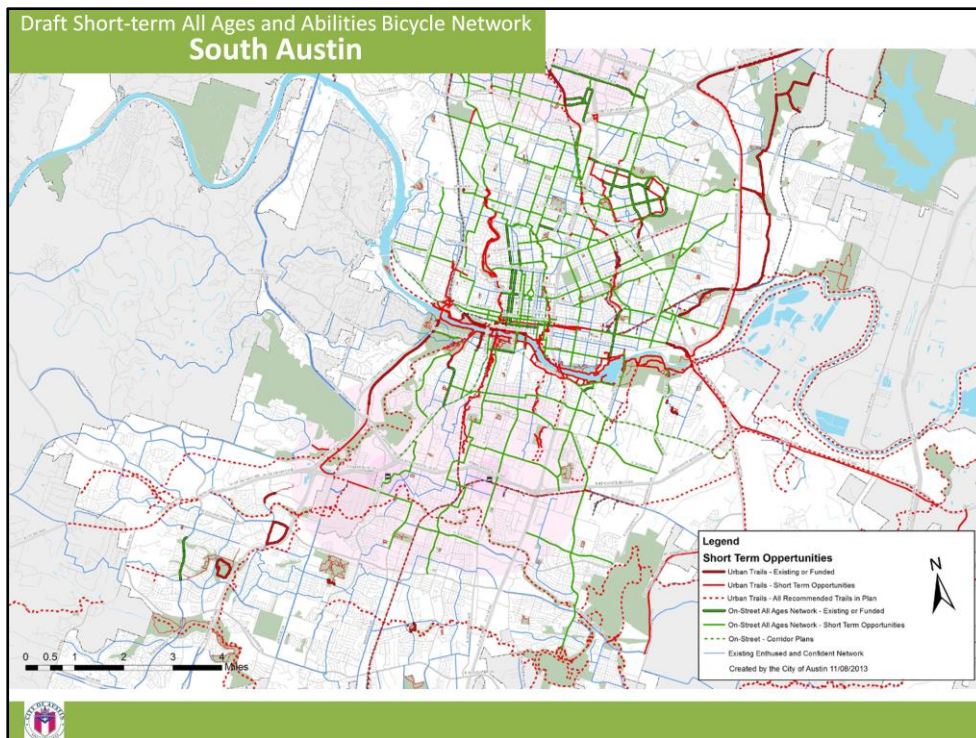
- One of the biggest changes from the 2009 Bicycle Plan was to use the speed and volume criteria shown above instead of basing the recommendations from a 20 year old 1992 FHWA report on recommended bicycle facilities.
- The criteria above acknowledges, per current research and best practice, that on higher speed and volume roadways that protected bicycle facilities are necessary to attract the largest portion of the population that is **interested** in riding a bicycle for transportation but **concerned** about safety due to motor vehicle traffic.



- This is a view of the short term network in the central city composed of on-street facilities and Urban Trails



- Zoomed in view of recommended short term all ages and abilities network in north Austin



Zoomed in view of recommended short term all ages and abilities network in south Austin

Bicycle Lane Network Barriers

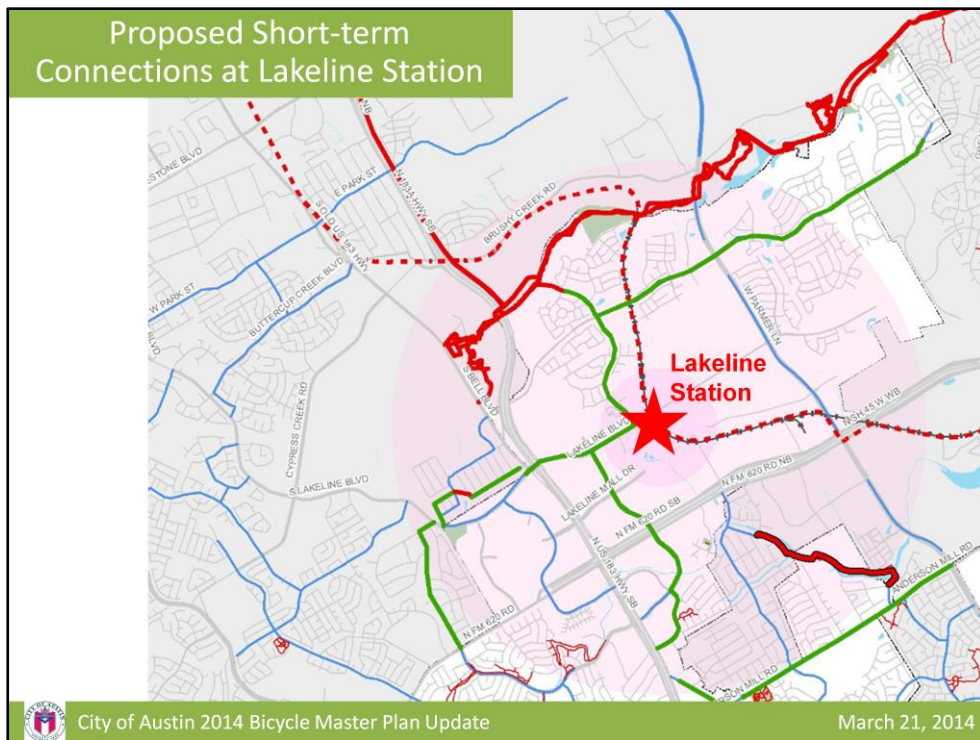
- Updated top 100 barriers
- Removal of barriers prioritized in plan



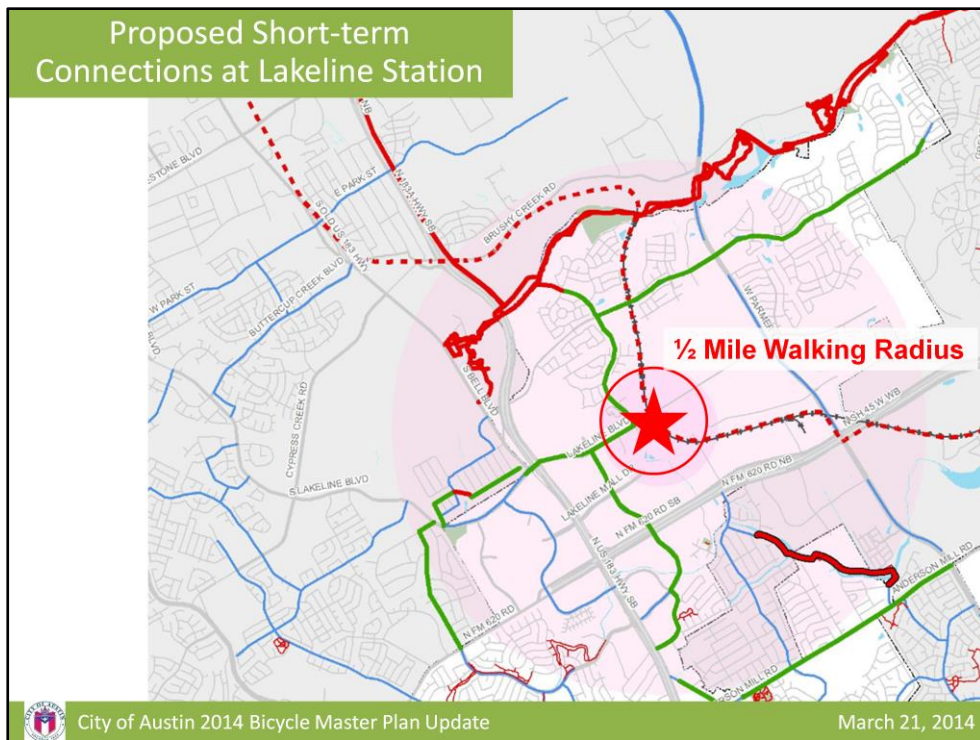
City of Austin 2014 Bicycle Master Plan Update

March 21, 2014

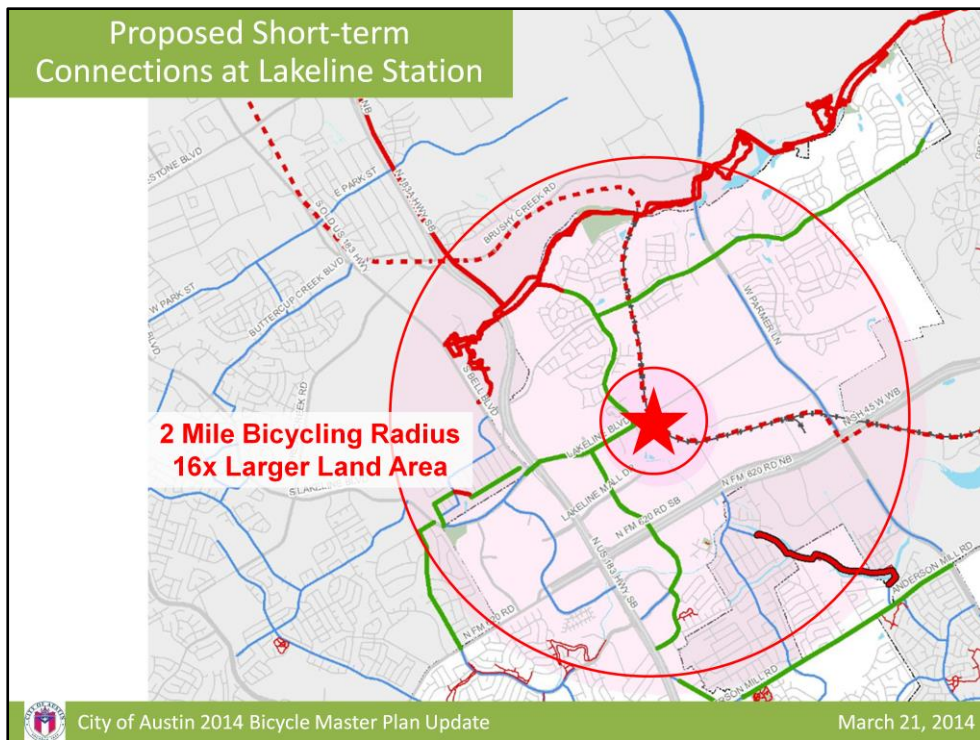
- Removing barriers even with the installation of bicycle lanes will continue to be a central element of the plan
- Past barrier along Barton Spring Road shown
- Barrier Resolved with animation



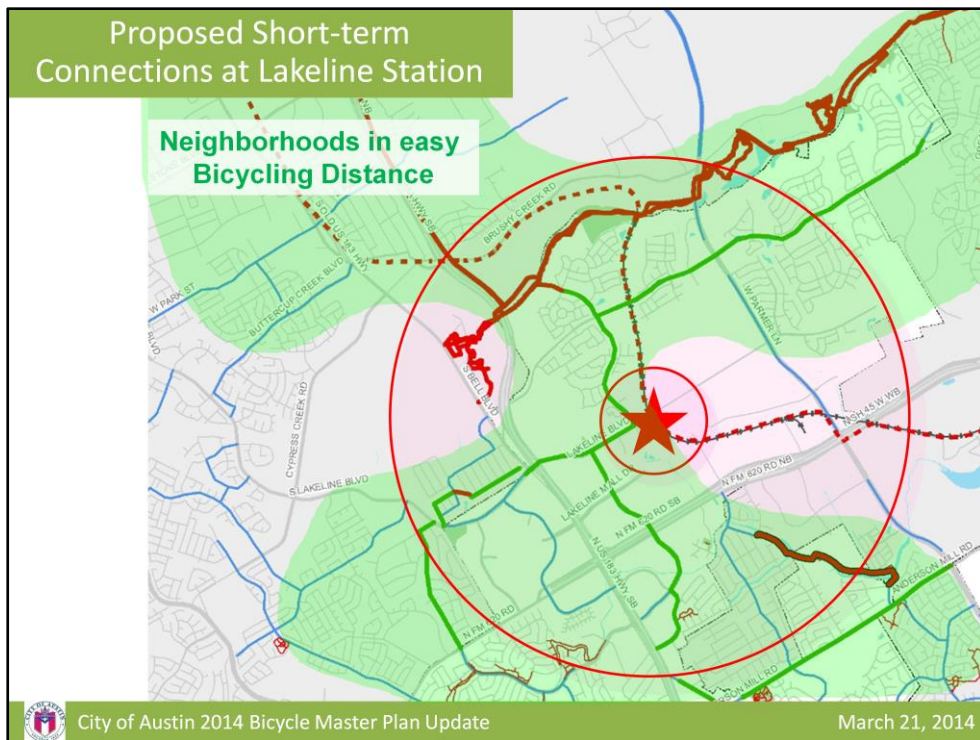
- An example showing the proposed network around the Cap Metro Lakeline station



- A ½ mile radius around the stations does not reach many destinations



- A 2 mile bicycle radius has a far greater reach to surrounding destinations



- The shaded areas show the destinations that would have safe bicycle access to the Lakeline station by a reasonable bicycle trip length. This presents an incredible opportunity to increase transit use, support transit oriented development, increase active transportation, and reduce drive alone trips.



March 21, 2014

- 39

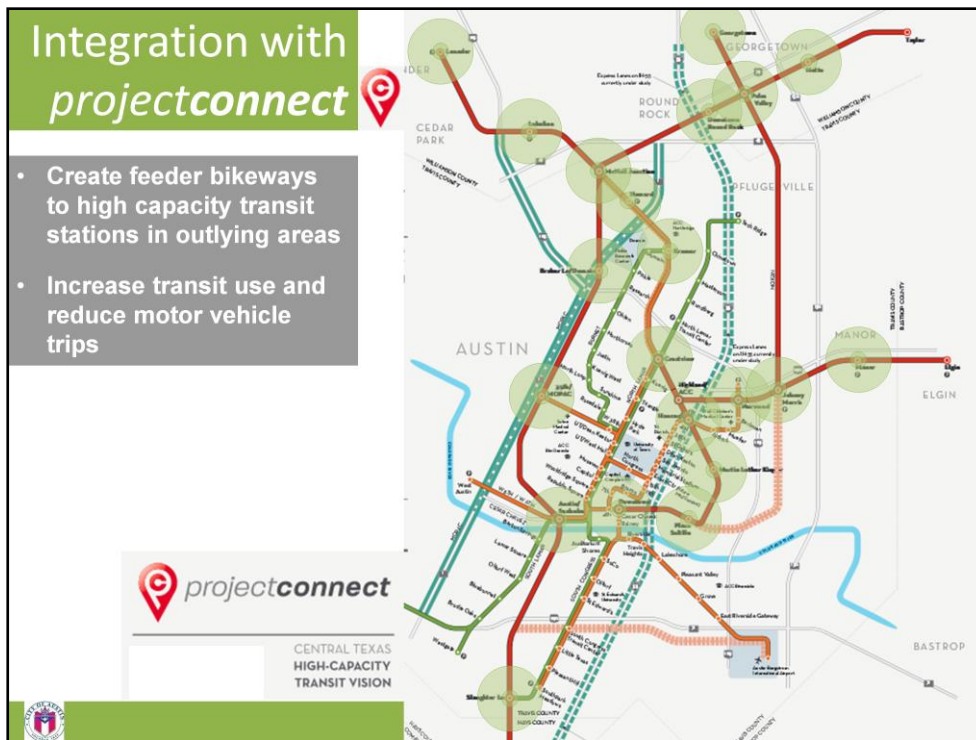
Integrating Transit with Bike Share






City of Austin 2014 Bicycle Master Plan Update

March 21, 2014

- Bicycle Share systems have significant potential to increase a transit rider's level of service and access to last mile (or two) destinations.
- Plan update will support Bicycle Share network expansion



- Protected bicycle infrastructure will be prioritized to support *projectconnect's* transit vision.
- Safe bicycle access to stations will significant expand the transit system catchment and increase ridership

Implementation and Cost Considerations		 Urban Trails	 On-Street Facilities
		The ultimate protected environment	Providing safe access to local destinations
Cost		\$1.5 - \$2 million per mile*	\$50k - \$500k per mile*
	*For comparison: 6-lane freeway approximately \$51 million per mile 4-lane arterial roadway approximately \$22 million per mile (Source: CAMPO 2035 Plan)		
Timeline		3-8 years per project	6 months - 2 years per project
 City of Austin 2014 Bicycle Master Plan Update		March 21, 2014	

- On-street facilities are much less expensive and can be implemented much faster than urban trails.

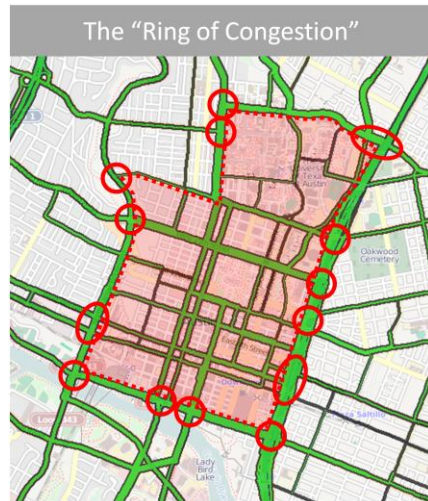
Benefits of Short Term Network Significant Mobility Improvements

Our *DRAFT* Analysis Shows
Of the 160k passenger vehicle trips that
enter the “Ring of Congestion” Daily

36% are less than 3 miles

If only 15% of these trips 0-3 miles
and 7% of trips 3-9 miles
are converted to bicycle trips

There would be a total reduction of
7% all motor vehicle trips
to the Ring of Congestion

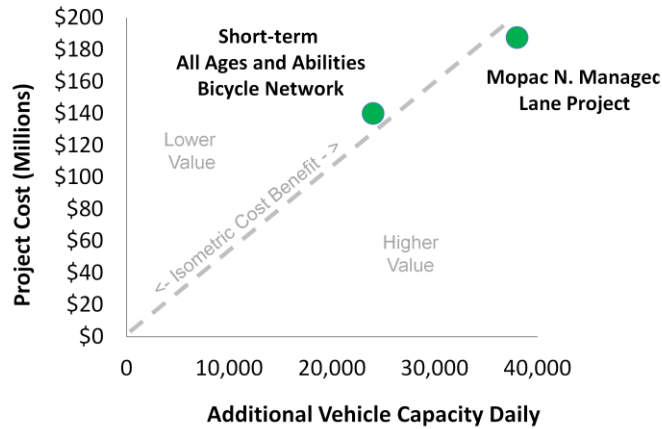


City of Austin 2014 Bicycle Master Plan Update

March 21, 2014

- Meeting our trip capture targets with the proposed short term all ages and abilities network will result in significant mobility improvements

Cost Benefit to Regional Mobility

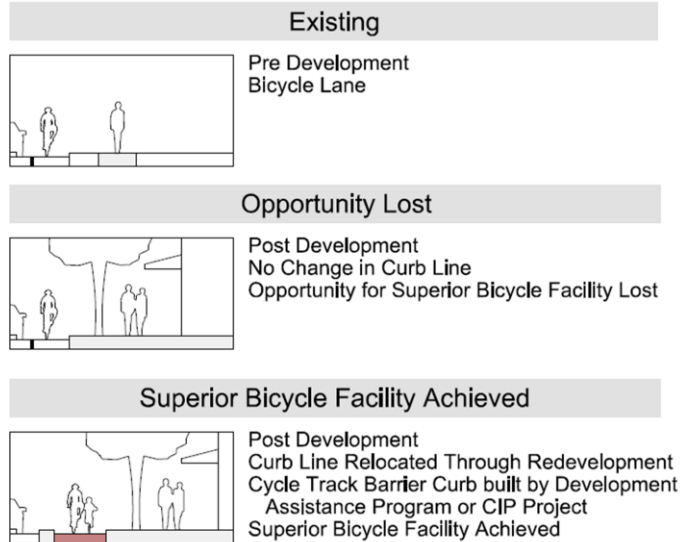


City of Austin 2014 Bicycle Master Plan Update

March 21, 2014

- The cost benefit of the short-term all ages and abilities bicycle network is on par with other regional mobility investments.
- The benefits of the All Ages and Abilities Bicycle Network are not limited to mobility benefits. Other benefits include health, quality of life, economic development and workforce development, and household affordability.

Implementation with Development



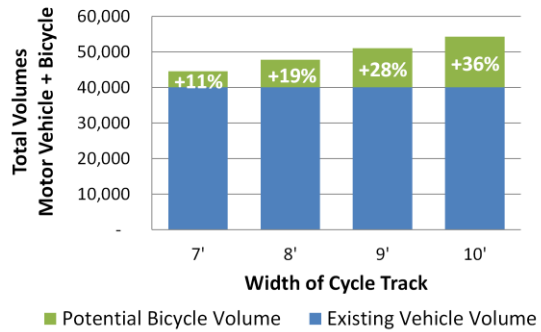
- It is important to ensure that corridors are shaped at time of development to provide safe bicycle facilities.
- This opportunity will not come again for many decades or more.

Implementation with Development

Shaping streets at the time of development:

- Significantly improves mobility along corridors.
- Provides a complete street for all users

Potential Mobility Improvement along S Lamar with Safe Bicycle Facilities



- Bicycle facilities represent a significant opportunity to accommodate additional travel demand due to infill development.
- Infill development short trips that are perfect by bicycle

Other Considerations for Protected Bicycle Lanes

Plan will Address the following:

- Austin Resource Recovery Services
 - Street Sweeping
 - Trash Pickup
 - Bulk Collection
 - Lawn Waste
 - Large Brush Collection
- Design Storm Water Quality and Quantity
- Utility Compatibility and Conflicts

References to be included

- Barrier curb selection matrix
- Example solutions for any of the above special considerations



- Protected bicycle facilities affect many other city operations. The plan will address best practices and toolbox.

PUBLIC INPUT SUMMARY

For the 2014 Bicycle Plan Update



City of Austin 2014 Bicycle Master Plan Update

March 21, 2014

- This is a summary of public input pertaining to on-street facilities gathered in this planning process in addition to the general bike and trail plan public input summarized in the Urban Trail plan presentation.

Bike Plan - Public Input Summary

- There were 1,400 free response comments from our surveys that were summarized in the following slides
- The number of comments supporting the following points are shown in parentheses (##) or on charts.



- Overview of how to interpret the free response comments

Bike Plan - Public Input Infrastructure

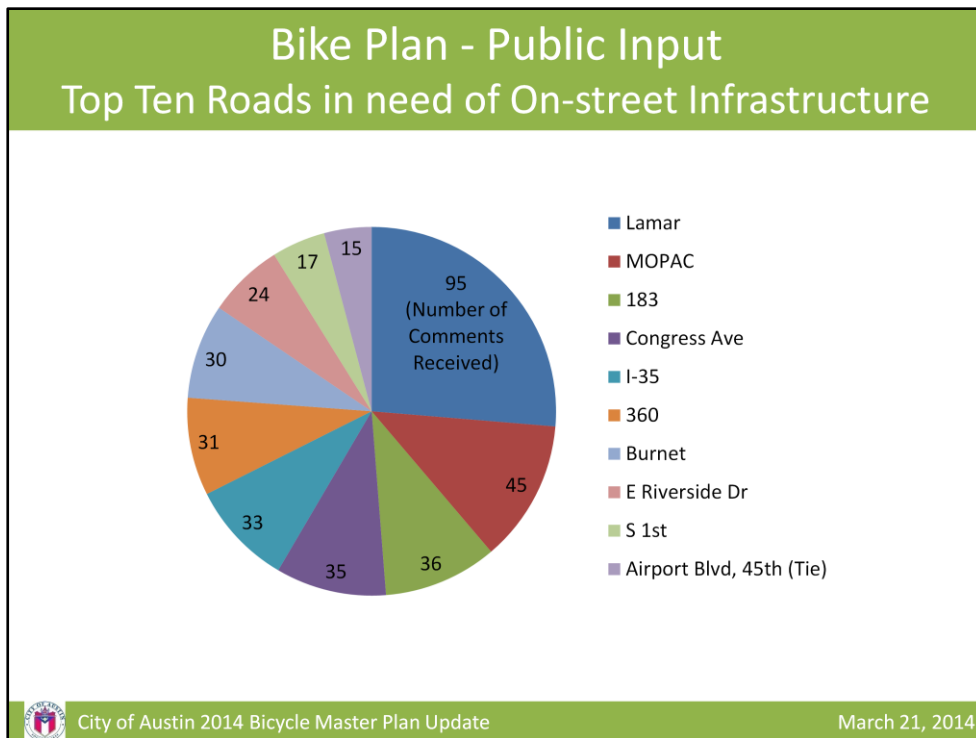
- There are gaps in the network that need to be connected.
- Desire for protected cycle-tracks throughout the city.
- Desire for connections to the central city, trails, schools, work, and across major highways
- Cycle tracks are seen as a way to allow families to bike together



City of Austin 2014 Bicycle Master Plan Update

March 21, 2014

- This is the public input in addition to the general information presented in the Urban Trail plan material
- Plan Response: The plan recommends each of these areas to be addressed

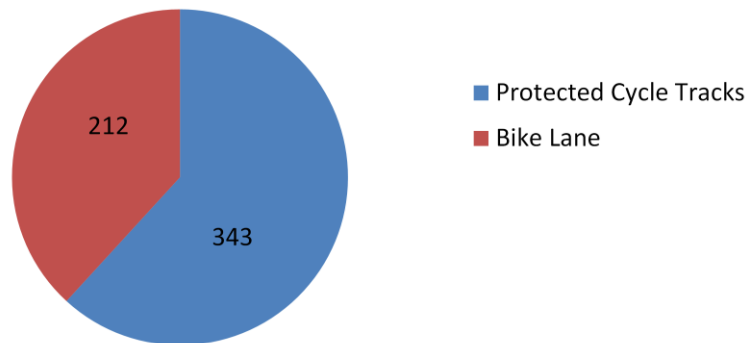


- This is the public input in addition to the general information presented in the Urban Trail plan material
- Plan Response: The plan recommends improvements on all of these corridors, some in the short term.

Bike Plan - Public Input

Requests for Improved On-Street Bicycle Facilities

- There is a strong desire for more on-street infrastructure throughout the city including more cycle tracks and bicycle lanes



City of Austin 2014 Bicycle Master Plan Update

March 21, 2014

- Plan Response: The plan offers strong support for protected infrastructure

Bike Plan - Public Input Other Input

Education

- Request for educational campaigns on how Cycle-Tracks function
- More education will lead to better behavior and improved safety.

Policy

- Creating incentive programs
- Desire for rules that keep pedestrians out of Protected Cycle-Tracks

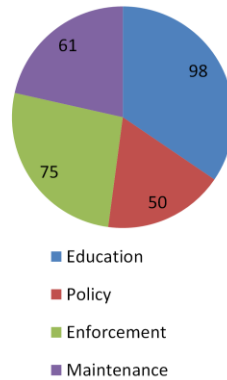
Enforcement

- Call for increased enforcement of the rules of the road for all users
- Call for enforcement of no parking in bike lanes

Maintenance

- Call for improved maintenance of debris in bicycle facilities.

Number of Comments



- The plan continues to call for best practice education, policy, enforcement, and maintenance measures

Timeline to Adoption – Public Meetings

- April 2 – Your Path to Austin Public Meeting Part II
- April 7 – Pedestrian Advisory Committee
- April 8 – East ANC and Urban Transportation Commission
- April 14 – Land, Facilities, and Programs Committee (Parks and Recreation Board)
- April 15 –Bicycle Advisory Council
- April 16 – Environmental Board
- April 22 – Parks and Recreation Board
- May 1 – City Council (set public hearing)
- May 13 – Planning Commission
- **May 22 – City Council (conduct public hearing)**





CITY OF AUSTIN 2014 BIKE PLAN UPDATE

For more information: <http://austintexas.gov/yourpath>

For comments contact: Nathan Wilkes, nathan.wilkes@austintexas.gov

City of Austin Bicycle Program



City of Austin 2014 Bicycle Master Plan Update

March 21, 2014

- And thus concludes an overview of the content that is proposed to be included in the 2014 Bicycle Plan Update