

-

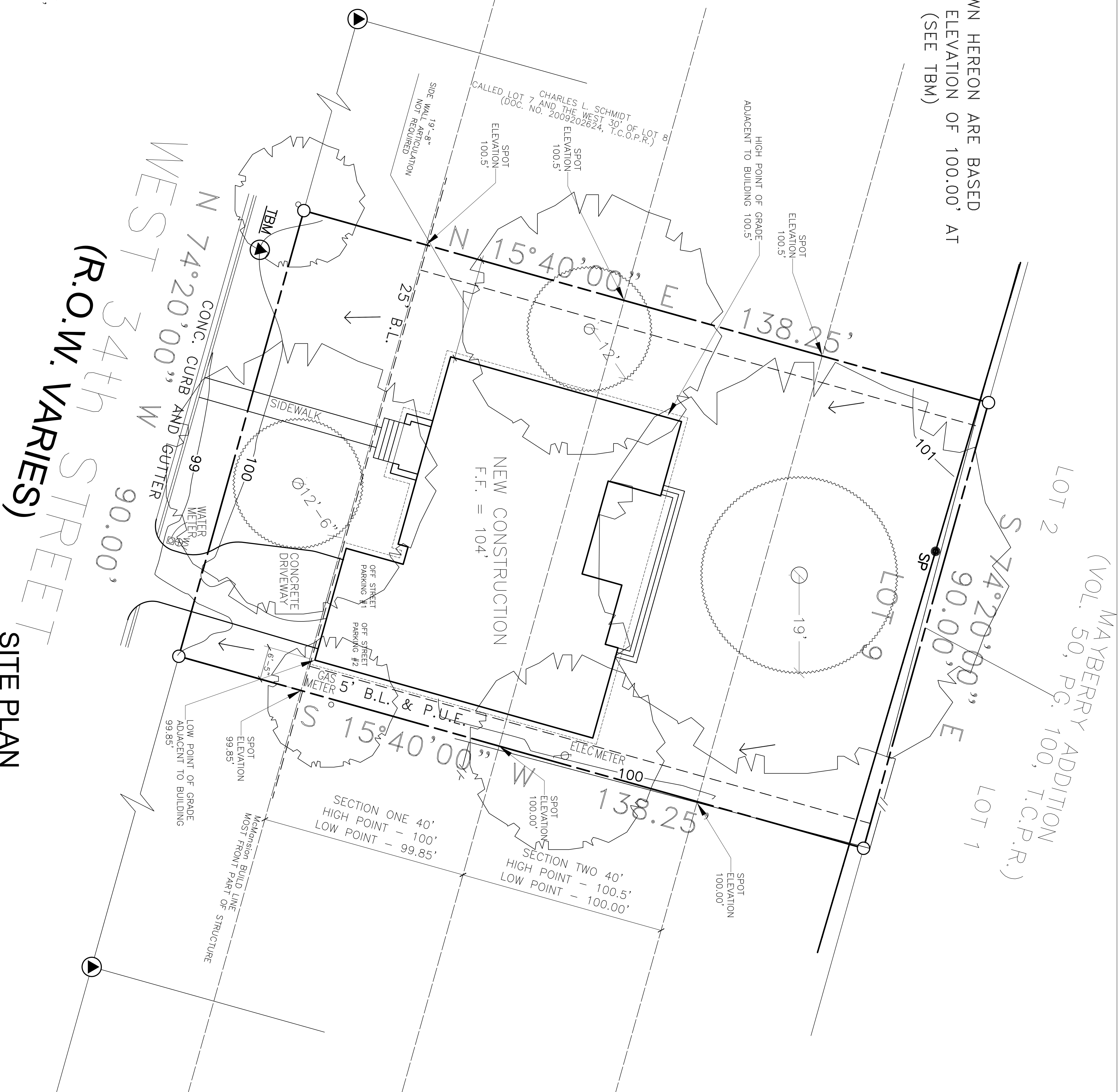
NOTE:
ELEVATIONS SHOWN HEREON ARE BASED
ON AN ASSUMED ELEVATION OF 100.00' AT
A 60D NAIL SET. (SEE TBM)

CITY OF AUSTIN CALCULATIONS

CITY OF AUSTIN CALCULATIONS			
	F.A.R.	IMP. COVERAGE	BLDG COVERAGE
CITY OF AUSTIN MAX ALLOWED	.40	45.0%	40.0%
FLOOR 1 LIVING	2413	2413	2413
FLOOR 2 LIVING	1174		
UNFINISHED ATTIC	400		
F. PORCH		62	62
REAR DECK		204	0 / (408)
GARAGE	349*	549	549
FRONT SIDEWALK		120	
DRIVEWAY		420	
A/C PAD		18	
TOTAL AREA	4336	3786	3024
LOT AREA	12,443	12,443	12,443
FINAL CALCULATION	34.8%	30.4%	24.3%

*NOTE: PER SECTION 3.3.2.B.1 OF SUBCHAPTER F, UP TO 200 SF OF THE GARAGE IS EXEMPTED FROM THE F.A.R.

LOT 9 AND THE EAST 30' OF LOT 8, BLOCK 3, BRYKER WOODS "E", A SUBDIVISION IN TRAVIS COUNTY, TEXAS, ACCORDING TO THE MAP OR PLAT THEREOF, RECORDED IN VOLUME 4, PAGE 104, OF THE PLAT RECORDS OF TRAVIS COUNTY, TEXAS.



SITE PLAN

SCALE: 1"=10'-0"

Harrison Giles

1710 W 34th St Austin, TX 78703

John Allen Design

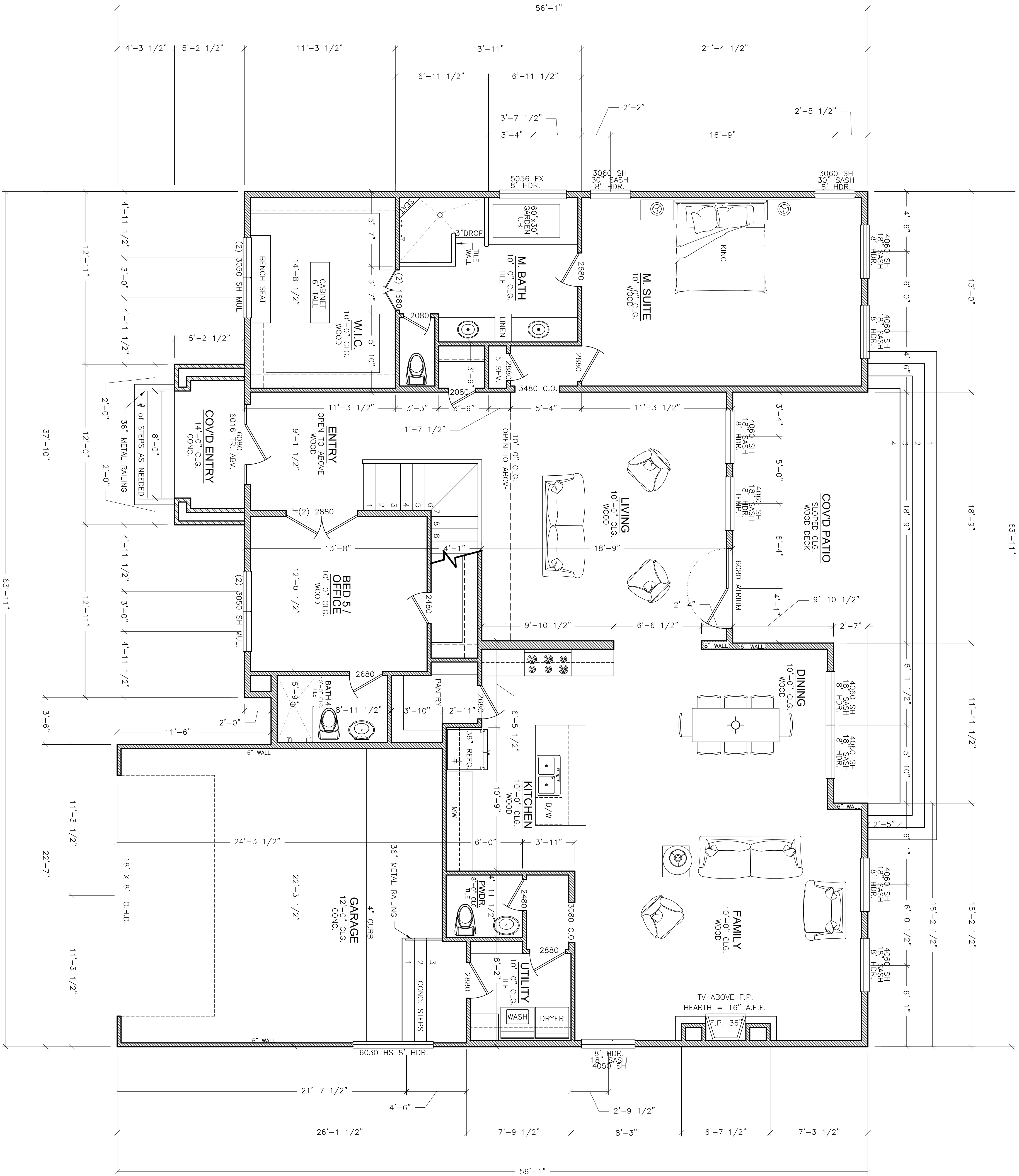
512-773-3527 JohnAllenDesign.com
13740 Research Blvd. (HWY 183)
Suite J-2 Austin, Tx 78750

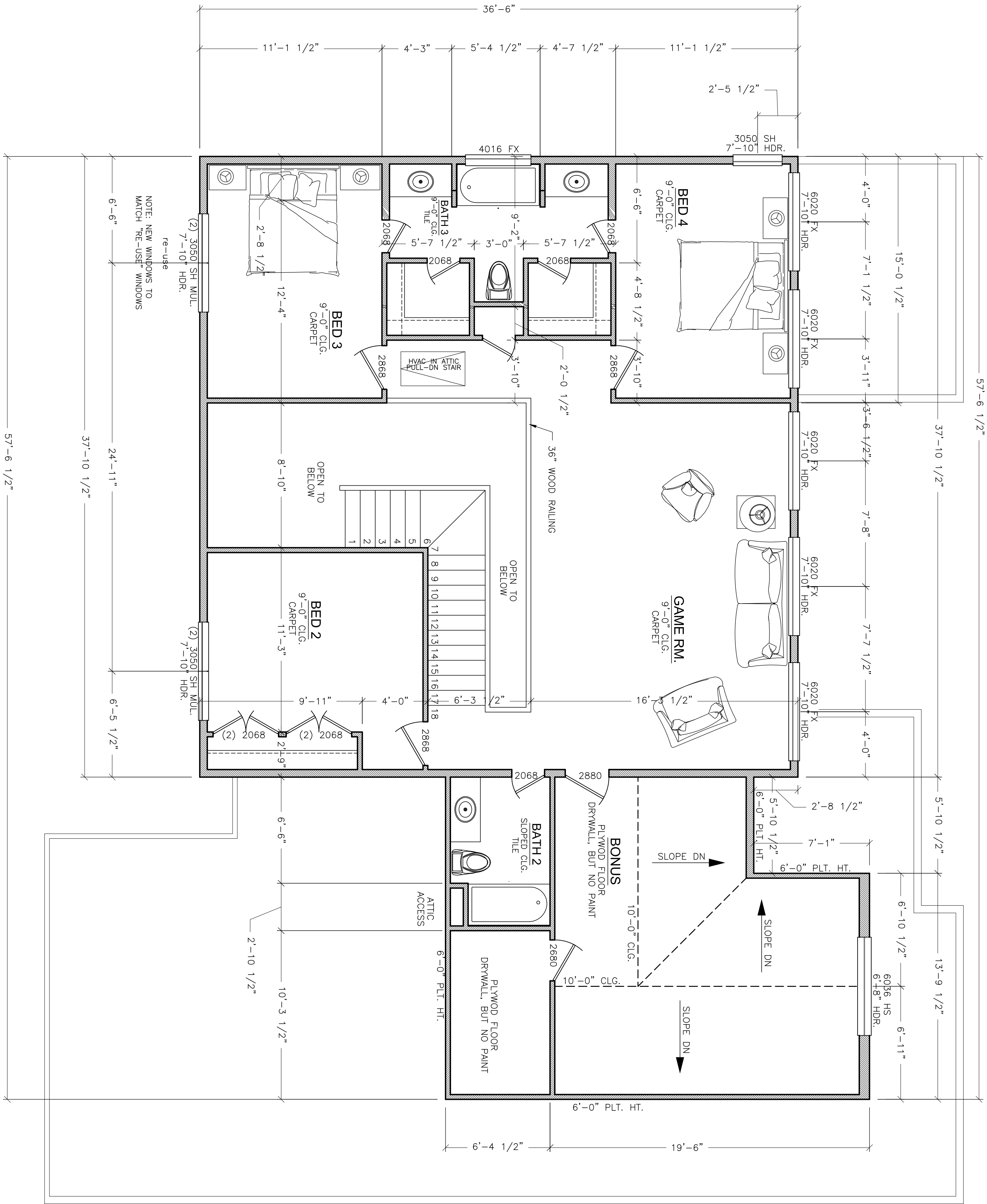
SHEET

A-1

OF 8 SHT'S

03/27/14 JDA





UPPER LEVEL FLOOR PLAN

SCALE: 1/4"=1'-0"

SQUARE FOOTAGE LEGEND	
LOWER LEVEL	2413 SQ.FT.
UPPER LEVEL	1174 SQ.FT.
TOTAL HVAC	3587 SQ.FT.
BONUS	400 SQ.FT.
TOTAL w/ BONUS	3987 SQ.FT.
GARAGE	549 SQ.FT.
WOOD DECK	408 SQ.FT.
COV'D ENTRY	62 SQ.FT.

Harrison Giles

1710 W 34th St Austin, TX 78703

John Allen Design

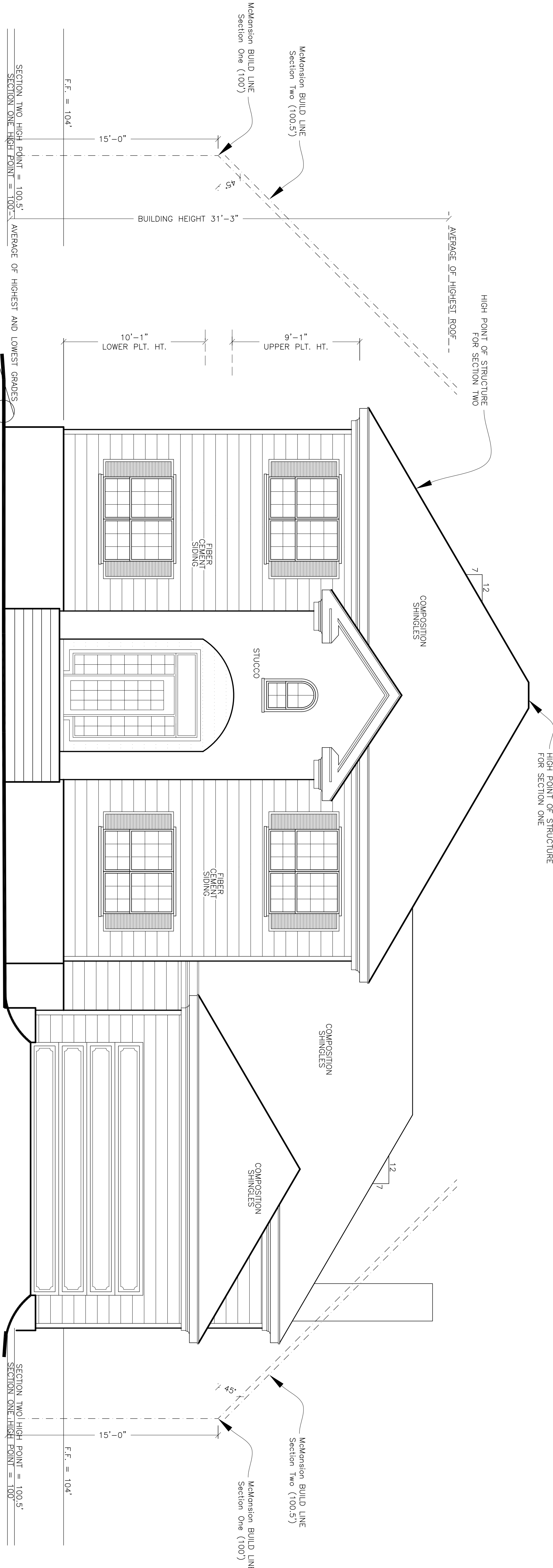
512-773-3527 JohnAllenDesign.com
13740 Research Blvd. (HWY 183)
Suite J-2 Austin, Tx 78750

SHEET

A-3

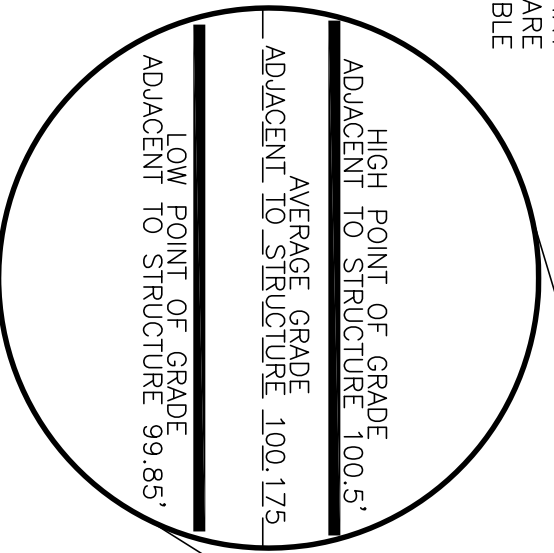
OF 8 SHT'S

03/27/14 JDA

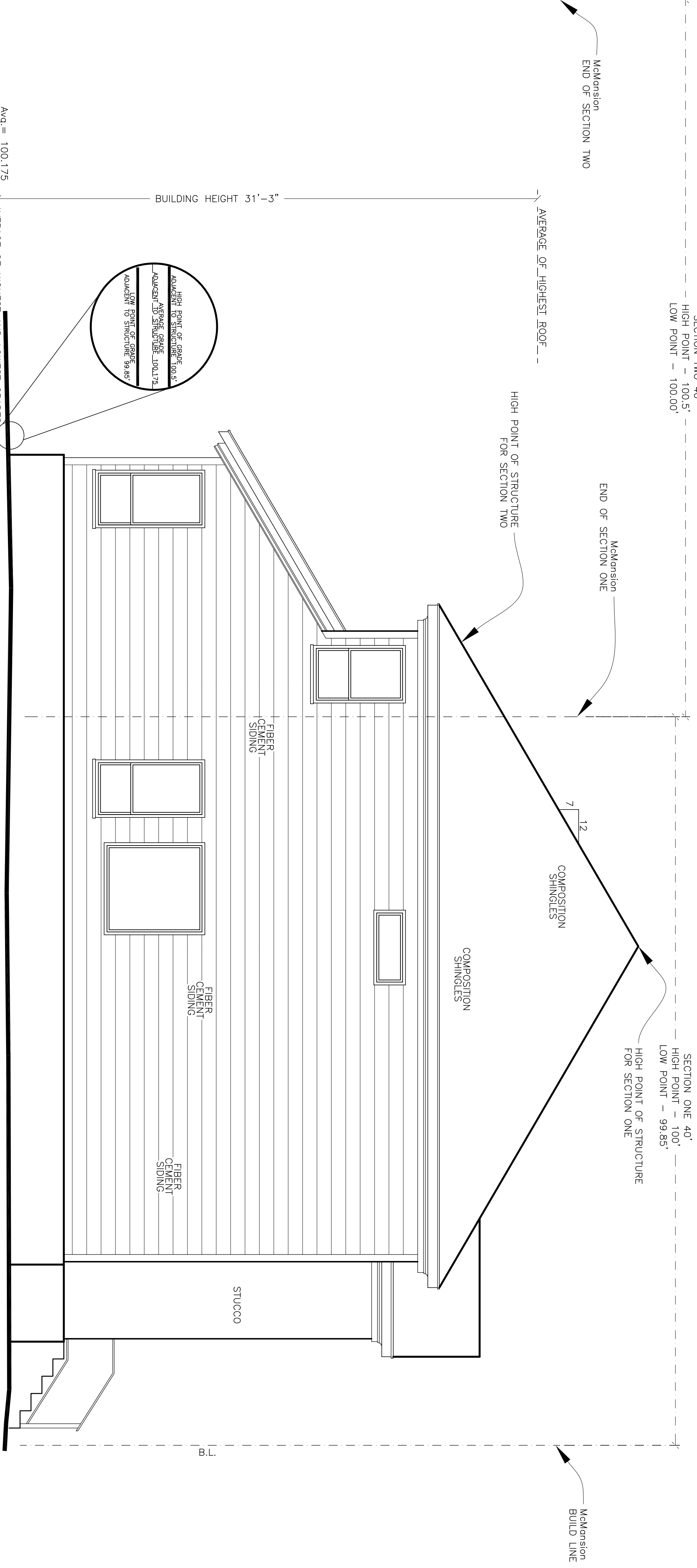


FRONT ELEVATION

SCALE: 1/4"=1'-0"

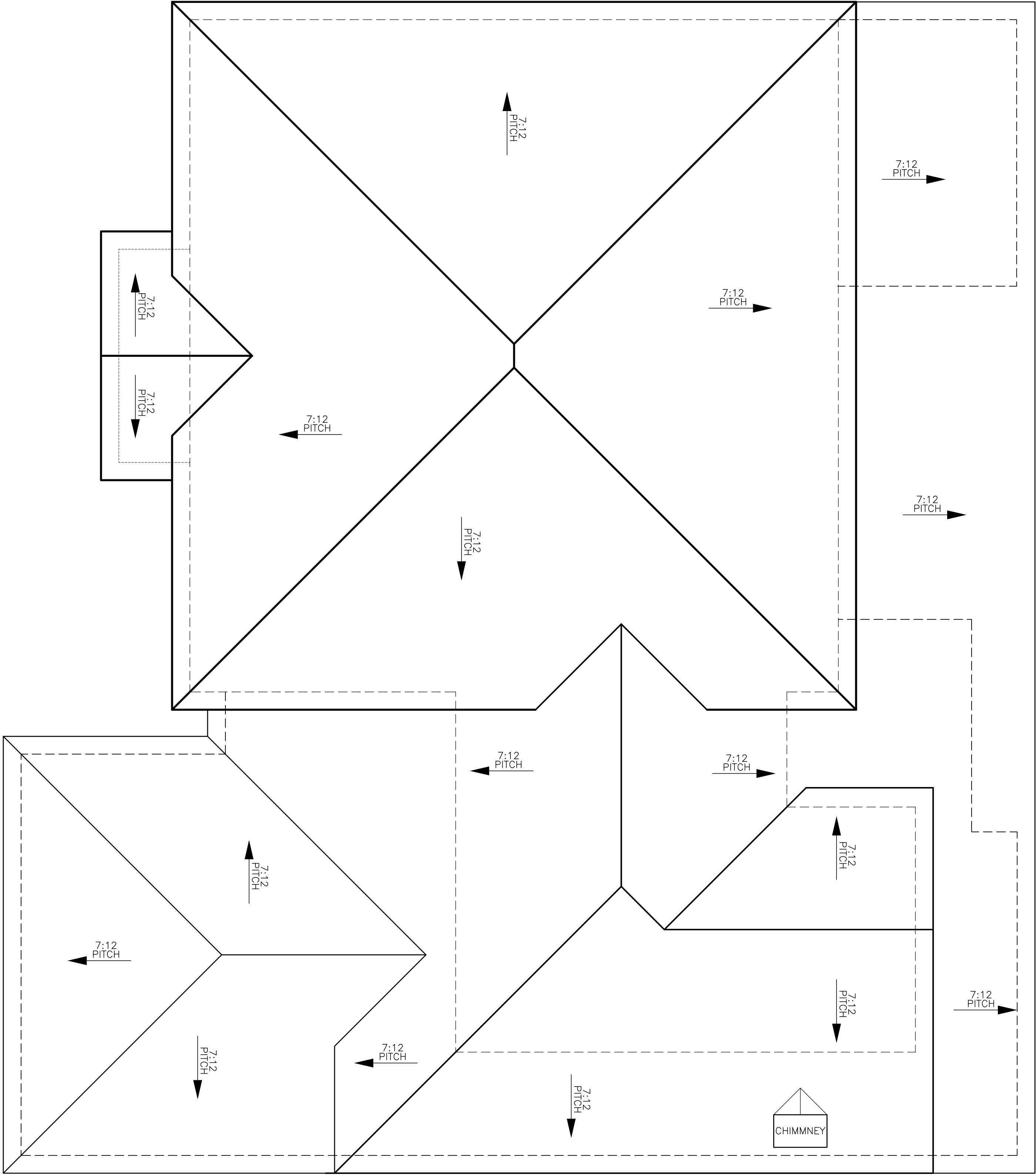


DETAILED VIEW OF AVERAGE GRADE



LEFT ELEVATION

SCALE: 1/4"=1'-0"



ROOF PLAN

SCALE: 1/4"=1'-0"

Harrison Giles

1710 W 34th St Austin, TX 78703

John Allen Design

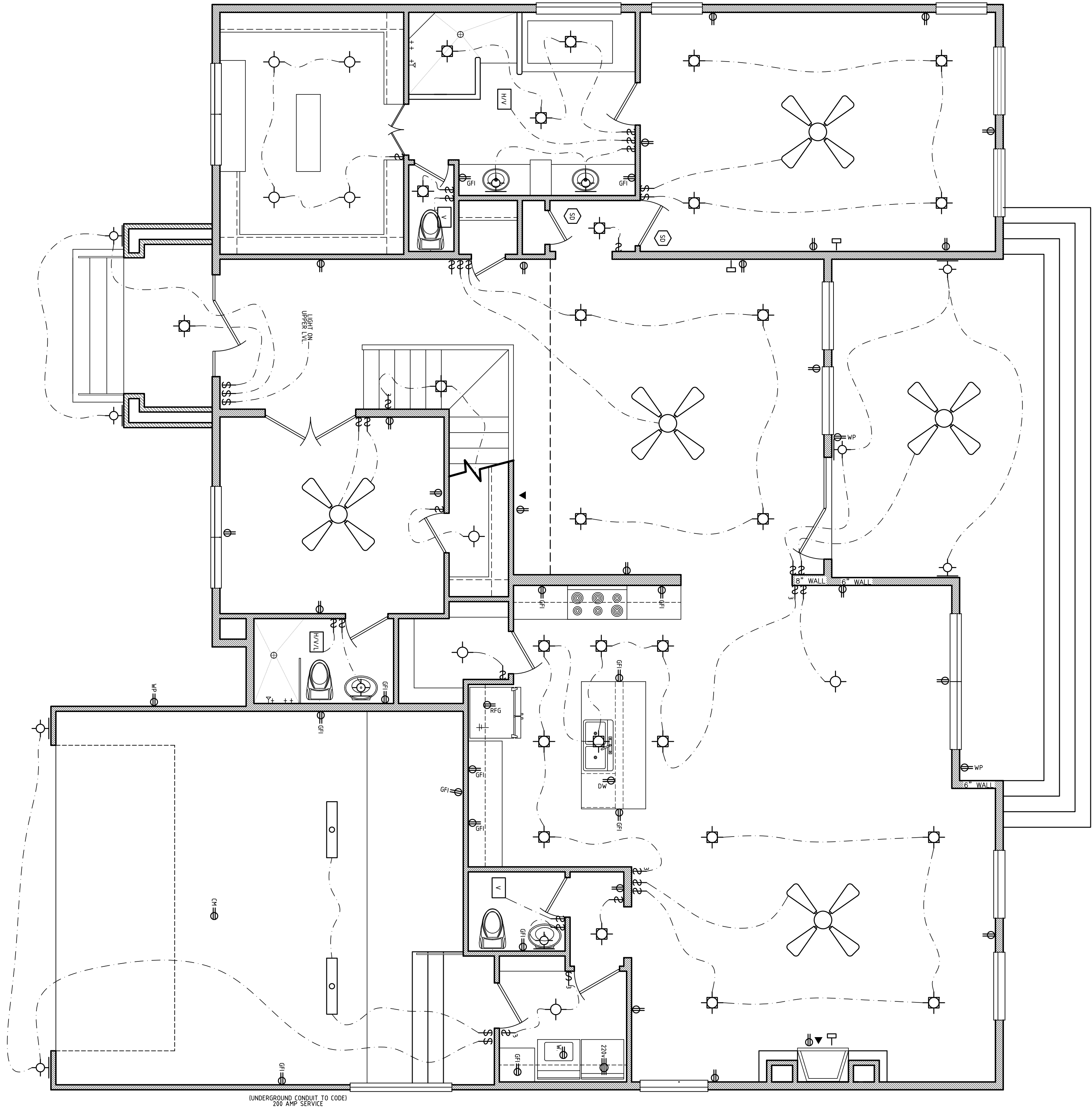
512-773-3527 JohnAllenDesign.com
13740 Research Blvd. (HWY 183)
Suite J-2 Austin, Tx 78750

SHEET

A-6

OF 8 SHET'S

03/27/14 JDA



LOWER LEVEL ELECTRICAL PLAN

SCALE: 1/4"=1'-0"

ELECTRICAL LEGEND	
	= SINGLE POLE SWITCH
	= THREE WAY SWITCH
	= FOUR WAY SWITCH
	= DIMMER SWITCH
	= CEILING FAN
	= 1'x4' FLUORESCENT LAMP
	= UNDER COUNTER LIGHTING
	= WALL MOUNTED SCONCE
	= FLOOD LIGHTS
	= RECESSED CAN
	= RECESSED EYE BALL FIXTURE
	= CEILING MOUNT BOX FIXTURE
	= WALL PLUG @ 12' UNO.
	= CEILING MOUNTED PLUG
	= GROUND FAULT INTERRUPTER
	= FLOOR MOUNTED PLUG
	= WATER PROOF PLUG, GFI
	= 220 VOLT OUTLET
	= TELEVISION CABLE HOOK UP
	= TELEPHONE HOOK UP
	= HEAT/VENT/LIGHT CEILING MOUNT
	= SMOKE& CARBON MONOXIDE DETECTOR
	= HARD WIRE W/ BATTERY BACK UP
ALL FIXTURES & OUTLETS ARE TO MEET THE CURRENT CODE REGULATIONS	

Harrison Giles

1710 W 34th St Austin, TX 78703

John Allen Design

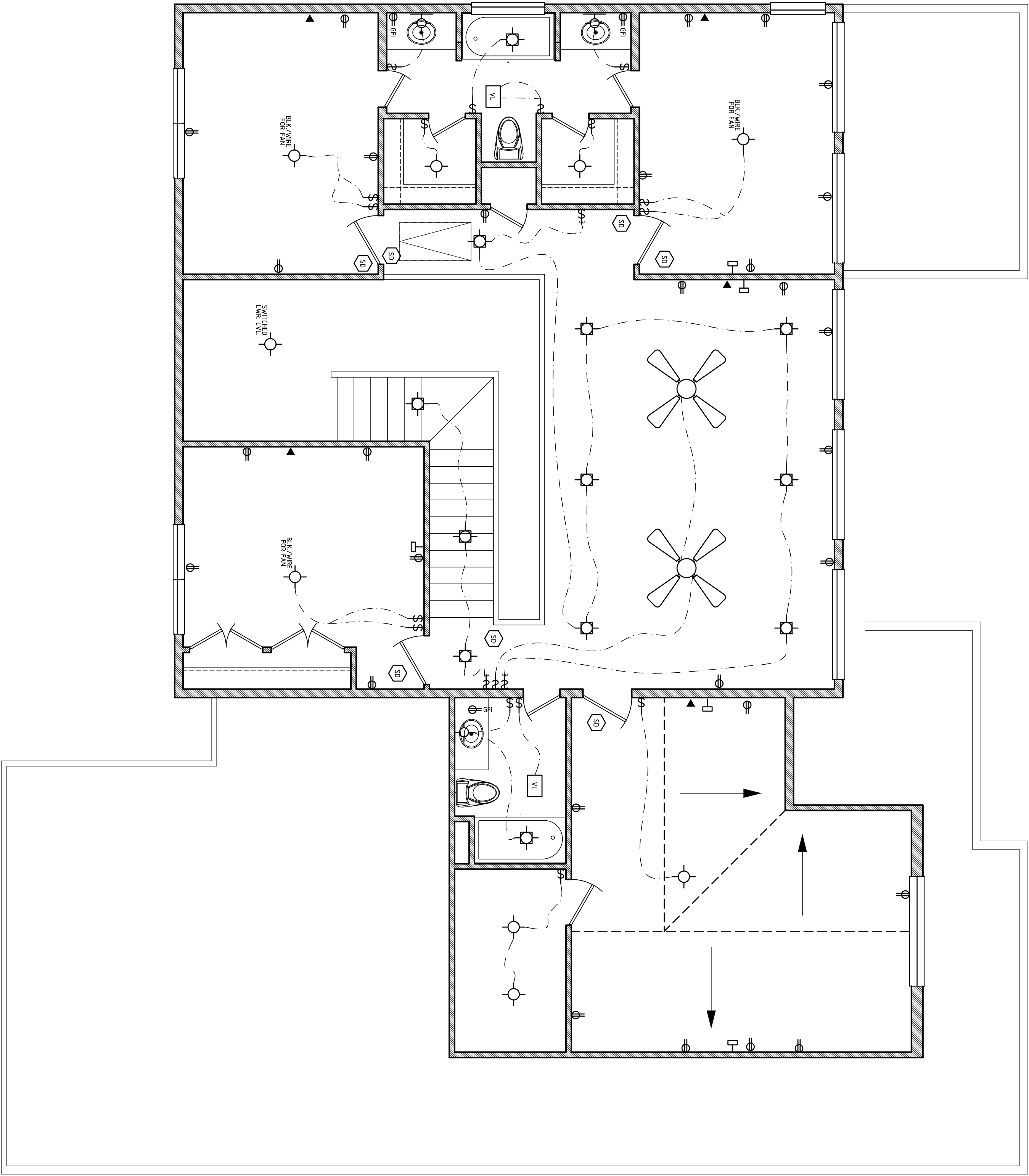
512-773-3527 JohnAllenDesign.com
13740 Research Blvd. (HWY 183)
Suite J-2 Austin, Tx 78750

SHEET

A-7

OF 8 SHT'S

03/27/14 JDA



UPPER LEVEL ELECTRICAL PLAN

SCALE: 1/4"=1'-0"

ELECTRICAL LEGEND	
	= SINGLE POLE SWITCH
	= THREE WAY SWITCH
	= FOUR WAY SWITCH
	= DIMMER SWITCH
	= CEILING FAN
	= 1'x4' FLUORESCENT LAMP
	= UNDER COUNTER LIGHTING
	= WALL MOUNTED SCONCE
	= FLOOD LIGHTS
	= RECESSED CAN
	= RECESSED EYE BALL FIXTURE
	= CEILING MOUNT BOX FIXTURE
	= WALL PLUG @ 12" UNO.
	= CEILING MOUNTED PLUG
	= GROUND FAULT INTERRUPTER
	= FLOOR MOUNTED PLUG
	= WATER PROOF PLUG, GFI
	= 220VOLT OUTLET
	= TELEVISION CABLE HOOK UP
	= TELEPHONE HOOK UP
	= HEAT/VENT/LIGHT CEILING MOUNT
	= SMOKE& CARBON MONOXIDE DETECTOR
	= HARD WIRE W/ BATTERY BACK UP
ALL FIXTURES & OUTLETS ARE TO MEET THE CURRENT CODE REGULATIONS	

John Allen Design

512-773-3527 JohnAllenDesign.com
13740 Research Blvd. (HWY 183)
Suite J-2 Austin, Tx 78750

Harrison Giles

1710 W 34th St Austin, TX 78703

SHEET

A-8

OF 8 SHET'S

03/27/14 JDA