

NOT FOR CONSTRUCTION

Daniel Boardman
Residential Design
Sustainable Design in Austin
and the Texas Hill Country

AUSTIN, TEXAS
Phone: 512-788-8515

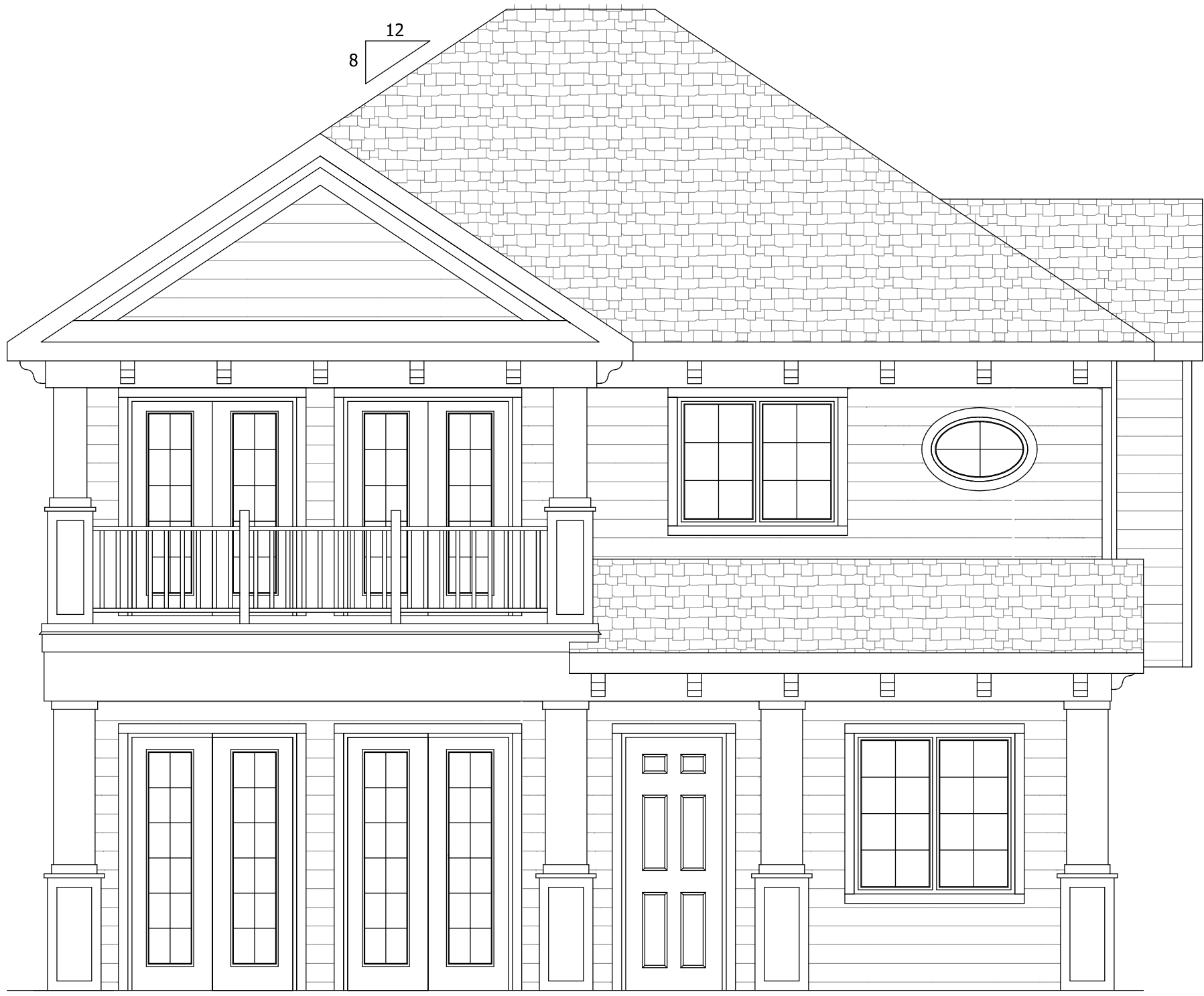
Project

902 W 30th St.
Austin, TX 78705

DATE	REVISION / ISSUE
4-28-2014	DESIGN DEVELOPMENT 1
5-13-2014	DESIGN DEVELOPMENT 2

Sheet No.

C-1



South Elevation

Scale : 1/4" = 1'-0"



East Elevation

Scale : 1/4" = 1'-0"

NOT FOR CONSTRUCTION

Daniel Boardman
Residential Design
Sustainable Design in Austin
and the Texas Hill Country

AUSTIN, TEXAS
Phone: 512-788-8515

Project

902 W 30th St.
Austin, TX 78705

DATE	REVISION / ISSUE
4-28-2014	DESIGN DEVELOPMENT 1
5-13-2014	DESIGN DEVELOPMENT 2

Sheet No.

A-3



West Elevation
Scale : 1/4" = 1'-0"



North Elevation
Scale : 1/4" = 1'-0"

NOT FOR CONSTRUCTION

Daniel Boardman
Residential Design
Sustainable Design in Austin
and the Texas Hill Country

AUSTIN, TEXAS
Phone: 512-788-8515

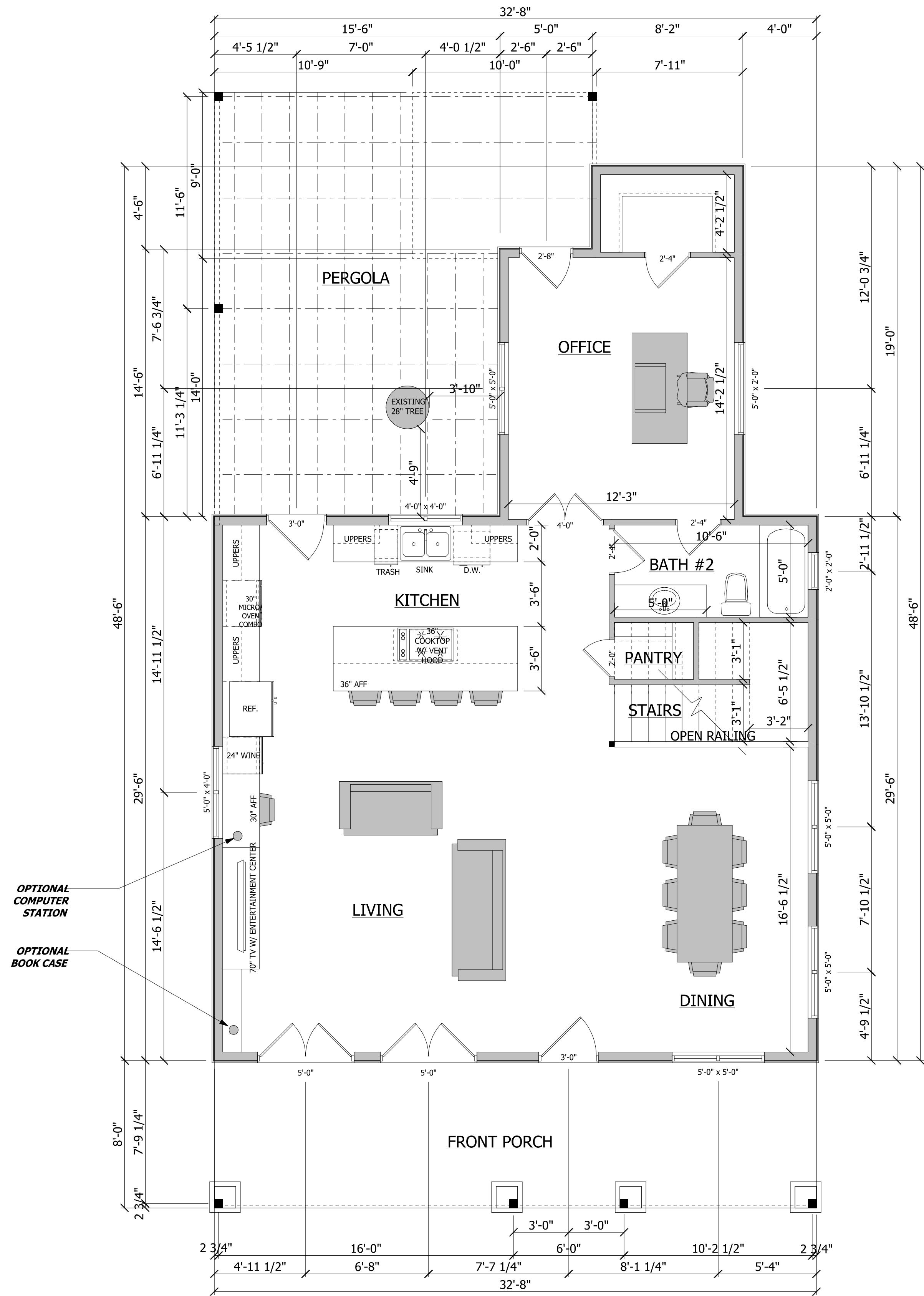
Project

902 W 30th St.
Austin, TX 78705

DATE	REVISION / ISSUE
4-28-2014	DESIGN DEVELOPMENT 1
5-13-2014	DESIGN DEVELOPMENT 2

Sheet No.

A-4



Main Level Floor Plan

Scale : 1/4" = 1'-0"

NOT FOR CONSTRUCTION

Daniel Boardman
Residential Design
Sustainable Design in Austin
and the Texas Hill Country

AUSTIN, TEXAS
Phone: 512-788-8515

Project

902 W 30th St.
Austin, TX 78705

DATE	REVISION / ISSUE
4-28-2014	DESIGN DEVELOPMENT 1
5-13-2014	DESIGN DEVELOPMENT 2

Sheet No.

A-1