



2013 Heritage Tree Report

Keith W. Mars
City Arborist Program
Planning and Development
Review Department



The City Arborist Program

Tree Preservation and Replenishment

Overview of Presentation

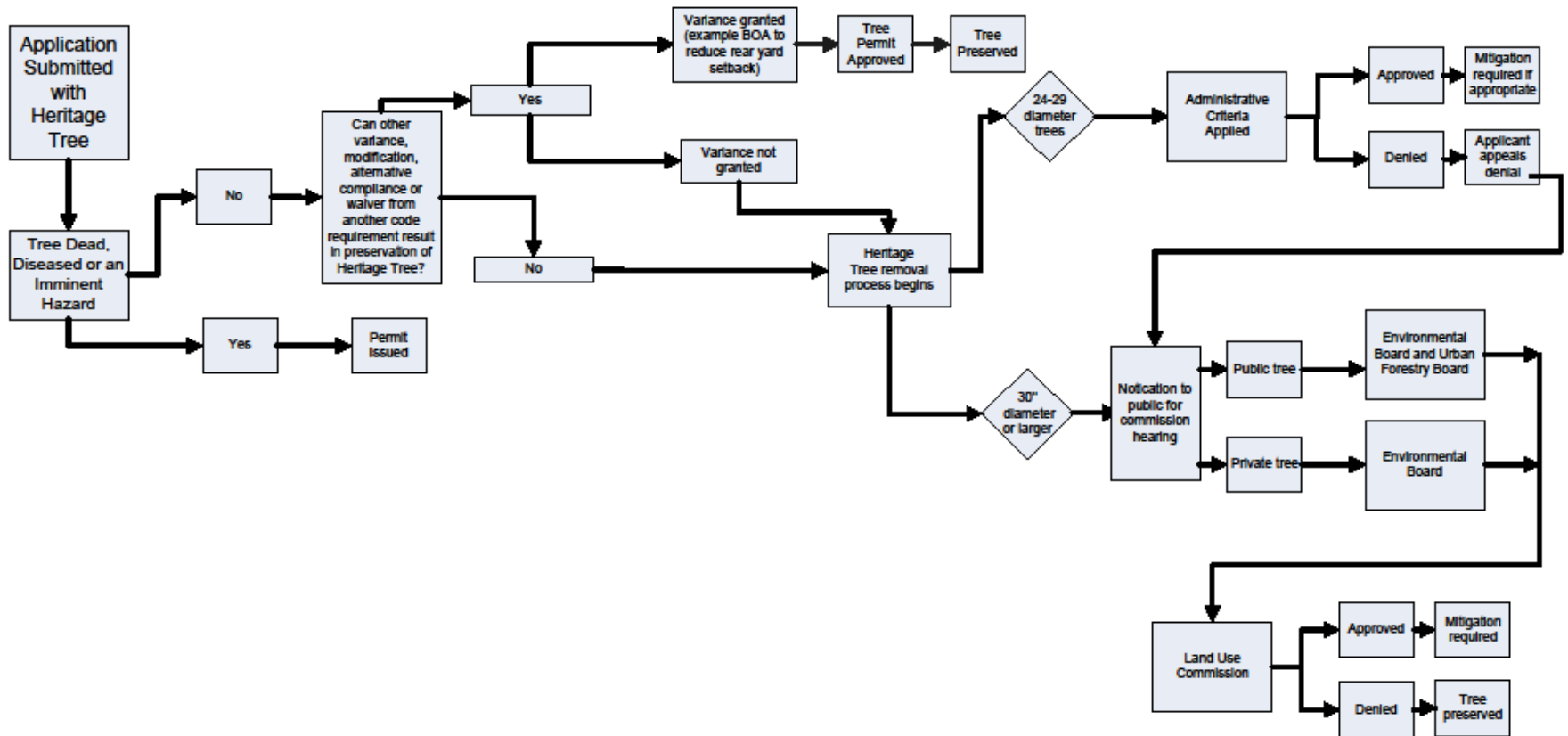
- Review Process
- 2013 Heritage Tree Review
 - - Site Plan and Subdivision Permits
 - - Heritage Tree Permits
 - - Dead, Diseased, or Hazard Permits
- Data Visualization (Maps and Charts)
- The Big Picture
- Urban Forest Challenges



The City Arborist Program

Tree Preservation and Replenishment

Heritage Tree Process – Env Board



The City Arborist Program

Tree Preservation and Replenishment

Site Plan and Subdivision Review for Heritage Trees

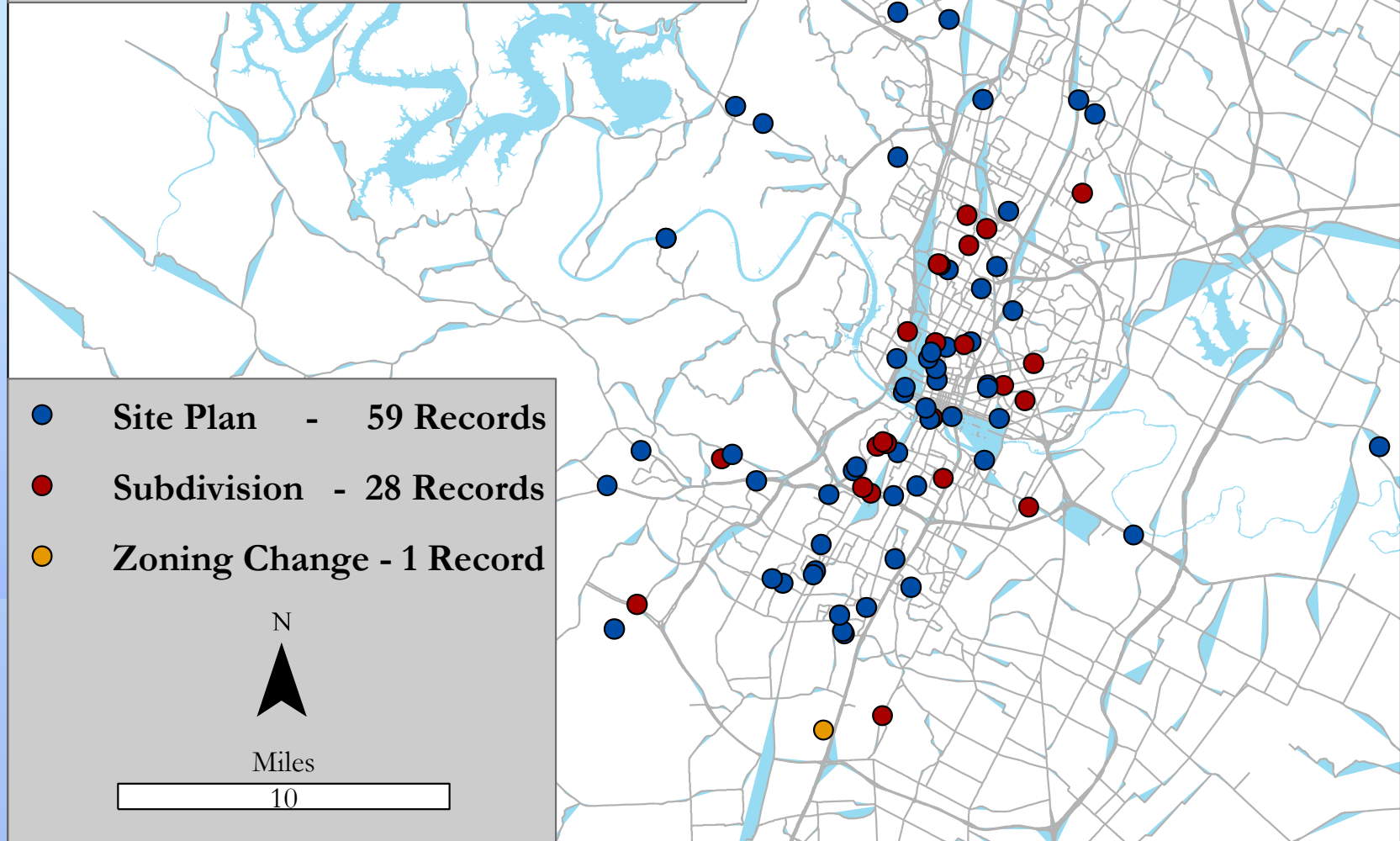
- Reviewed ~90 site plans and subdivisions
- ~10,200 inches of heritage trees surveyed on approved site plans
- ~9,720 inches of heritage trees preserved
- ~480 inches removed (95% preservation)
- ~620 inches replaced



The City Arborist Program

Tree Preservation and Replenishment

Location of Development Plans Reviewed and Approved in 2013 for Heritage Trees



The City Arborist Program

Tree Preservation and Replenishment

2013 Heritage Tree Permits

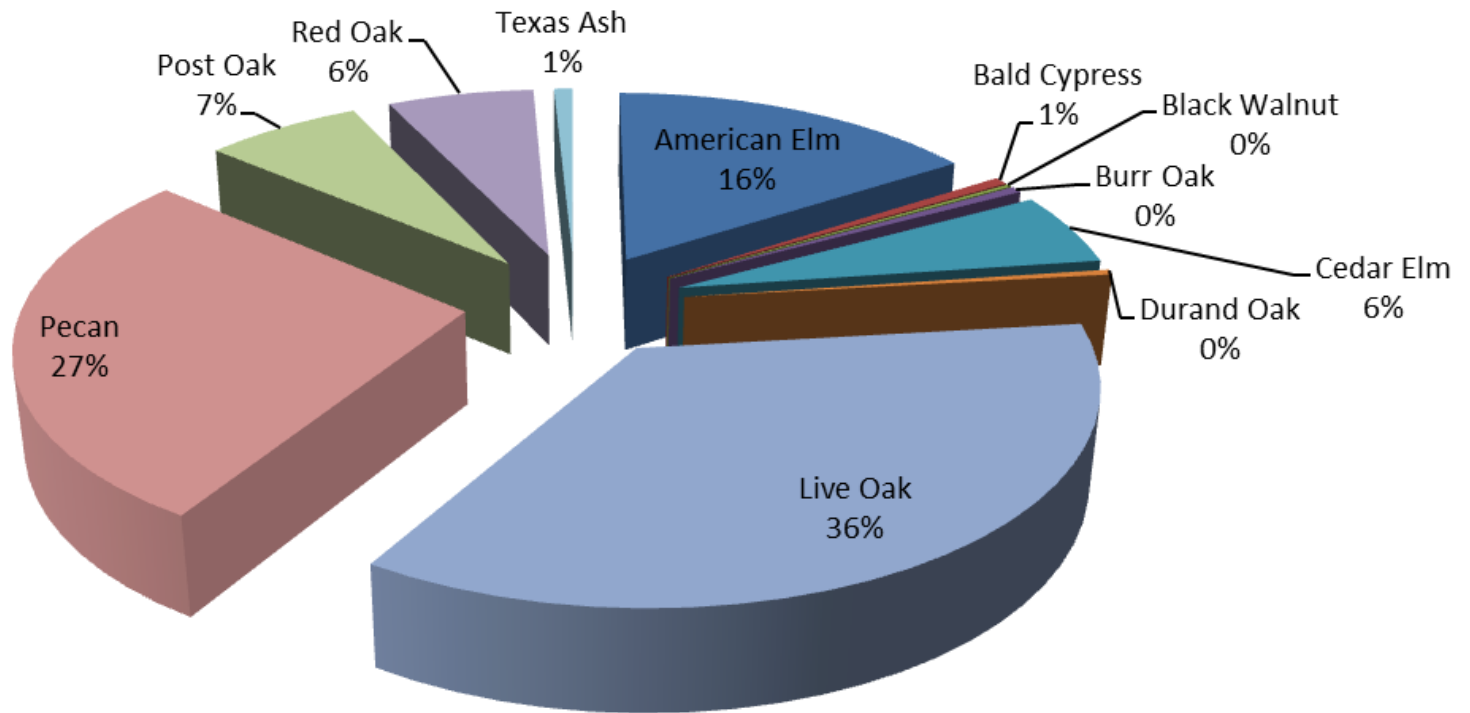
- ~1,000 heritage trees were reviewed on tree permits in 2013
- Over 30,000 inches of trees reviewed
- 3% of heritage trees allowed to be removed (~30 of ~1000 heritage trees)



The City Arborist Program

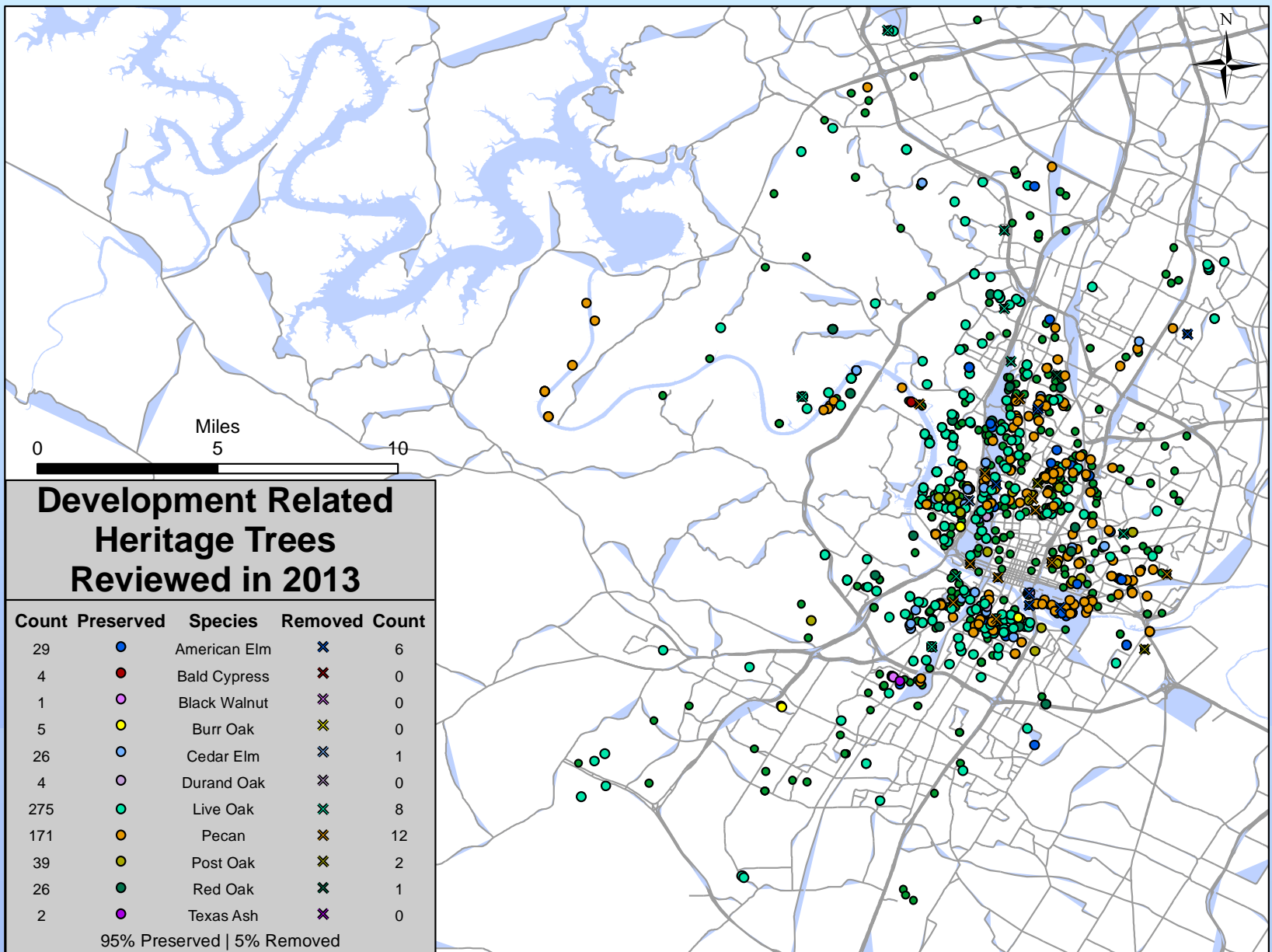
Tree Preservation and Replenishment

Heritage Trees by Species Reviewed on Tree Permits in 2013



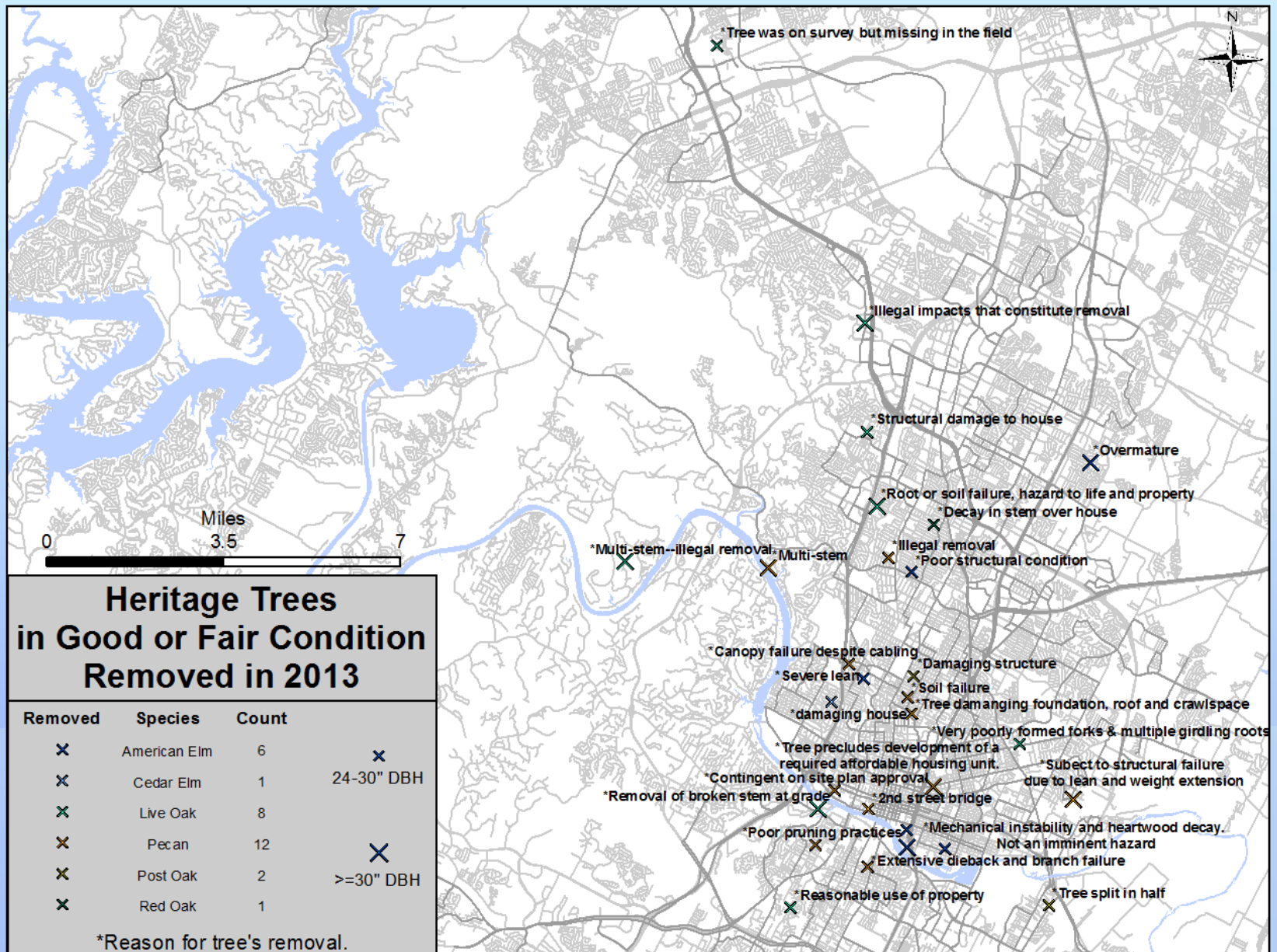
The City Arborist Program

Tree Preservation and Replenishment



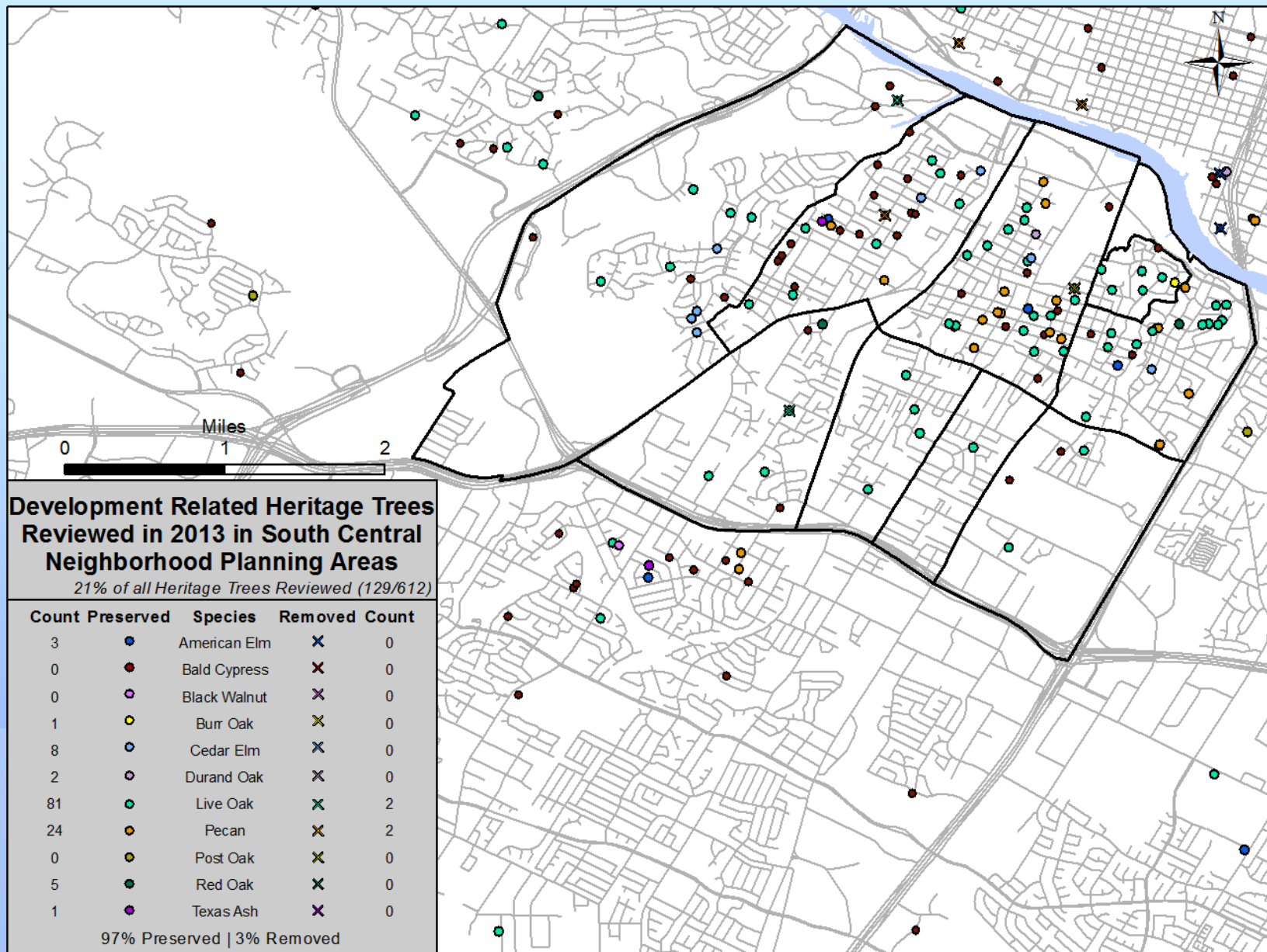
The City Arborist Program

Tree Preservation and Replenishment



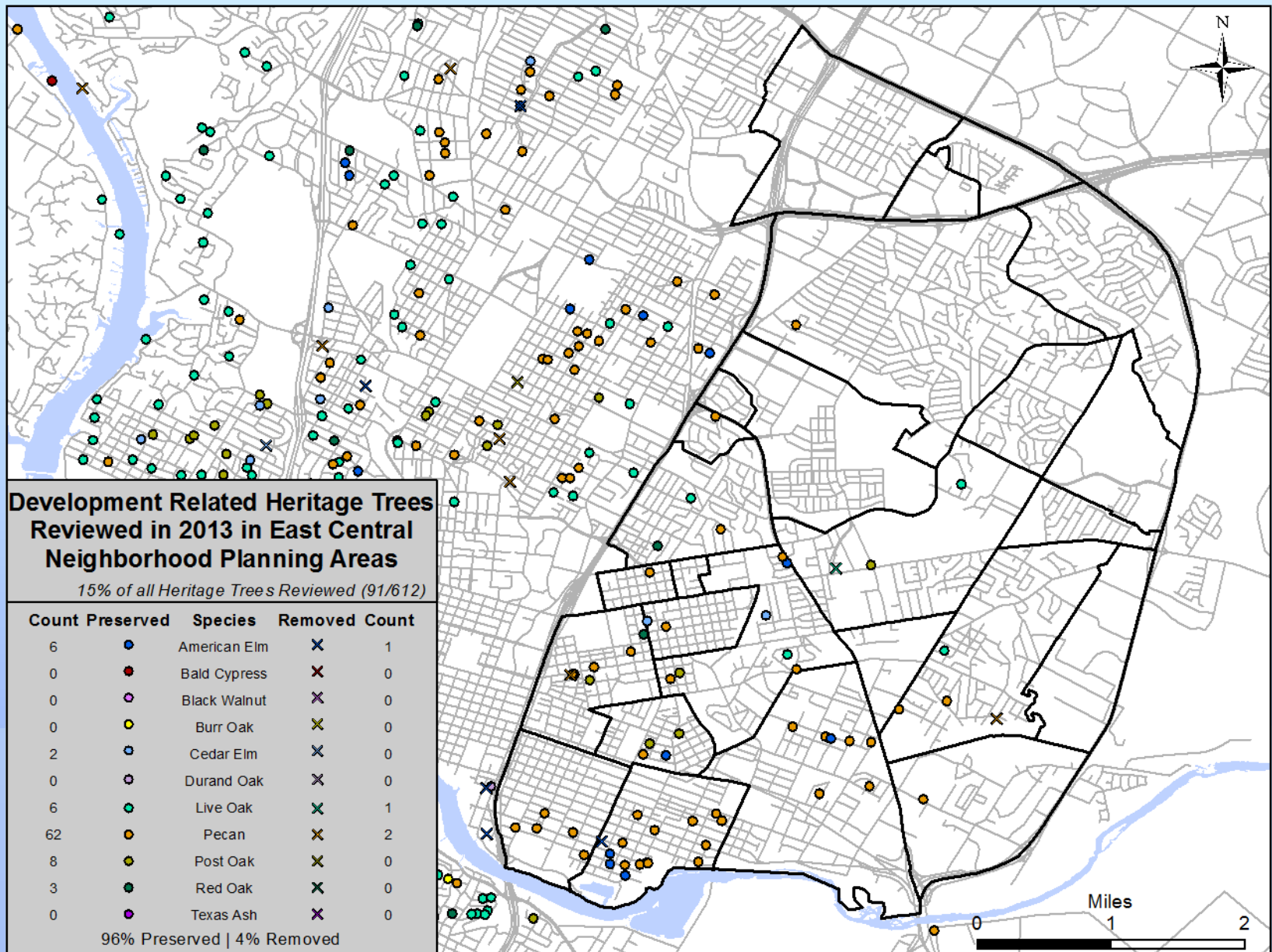
The City Arborist Program

Tree Preservation and Replenishment



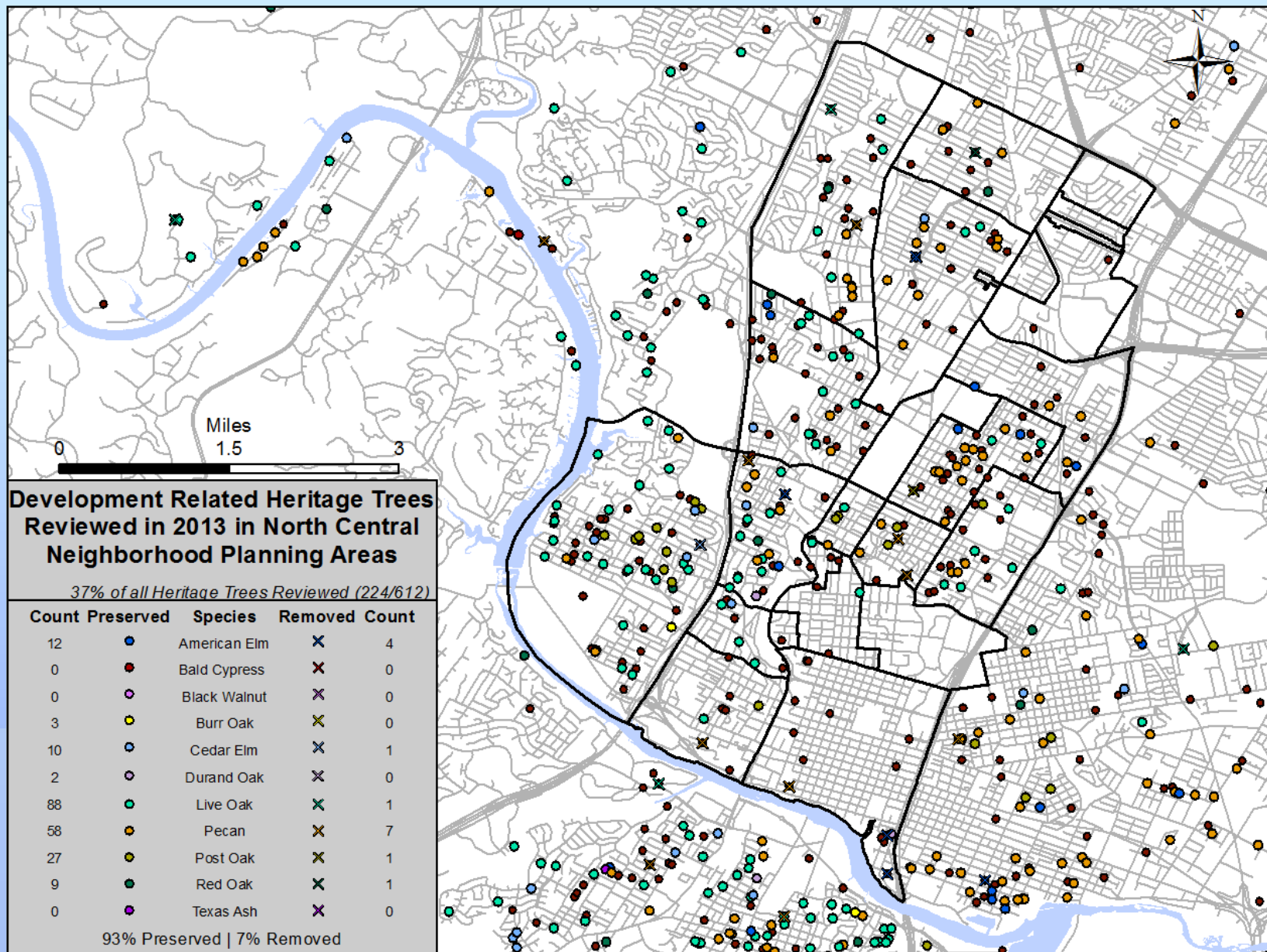
The City Arborist Program

Tree Preservation and Replenishment



The City Arborist Program

Tree Preservation and Replenishment



The City Arborist Program

Tree Preservation and Replenishment

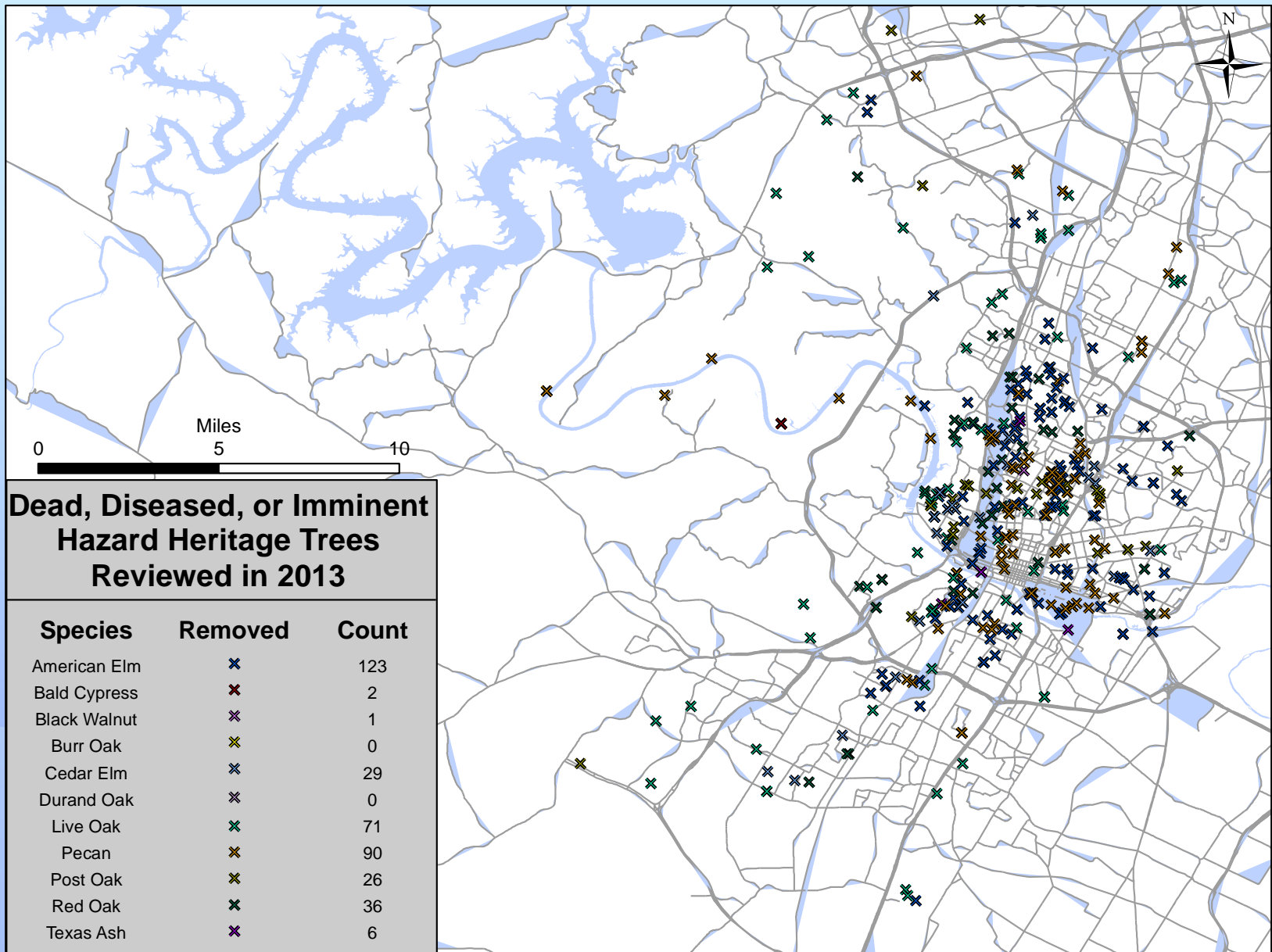
Tree Condition Permits

- ~380 dead, diseased, or imminent hazard heritage trees were reviewed on tree permits in 2013
- ~11,800 inches of dead, diseased, or imminent hazard trees permitted for removal



The City Arborist Program

Tree Preservation and Replenishment



The City Arborist Program

Tree Preservation and Replenishment

Heritage Tree Mortality on Tree Permits

<u>Species</u>	<u>Count</u>	<u>Dead, Diseased, or hazardous?</u>	<u>2013 % mortality</u>	<u>2012 % mortality</u>	<u>2011 %mortality</u>	<u>Δ 2011-2012</u>	<u>Δ 2012-2013</u>
American Elm	158	123	78%	86%	85%	1%	-8%
Cedar Elm	56	29	52%	47%	50%	-3%	5%
Live Oak	354	71	20%	24%	26%	-2%	-4%
Pecan	273	90	33%	40%	31%	9%	-7%
Post Oak	67	26	39%	50%	38%	12%	-11%
Red Oak	63	36	57%	71%	71%	0%	-14%



The City Arborist Program

Tree Preservation and Replenishment

Big Picture

- The ordinance is working (>95% preservation rate of heritage trees)
- American Forest selects Austin as top 10 Urban Forest in country
- 4th year as fastest growing city in country while protecting the urban forest
- Is permit data reflective of the state of our urban forest?



The City Arborist Program

Tree Preservation and Replenishment

Urban Forest Challenges

- Drought mortality
- Protection of tree species less than 19"
- Quality of planting stock
- Development pressures
- Water resources
- Quantifying ecosystem services



The City Arborist Program

Tree Preservation and Replenishment

Questions?

Keith Mars

City of Austin Arborist Program

Planning and Development Review

512-974-2755

keith.mars@austintexas.gov



The City Arborist Program

Tree Preservation and Replenishment