

City of Austin Urban Trails Master Plan

Urban Forestry Board

May 21, 2014



Existing Urban Trail Related Policies



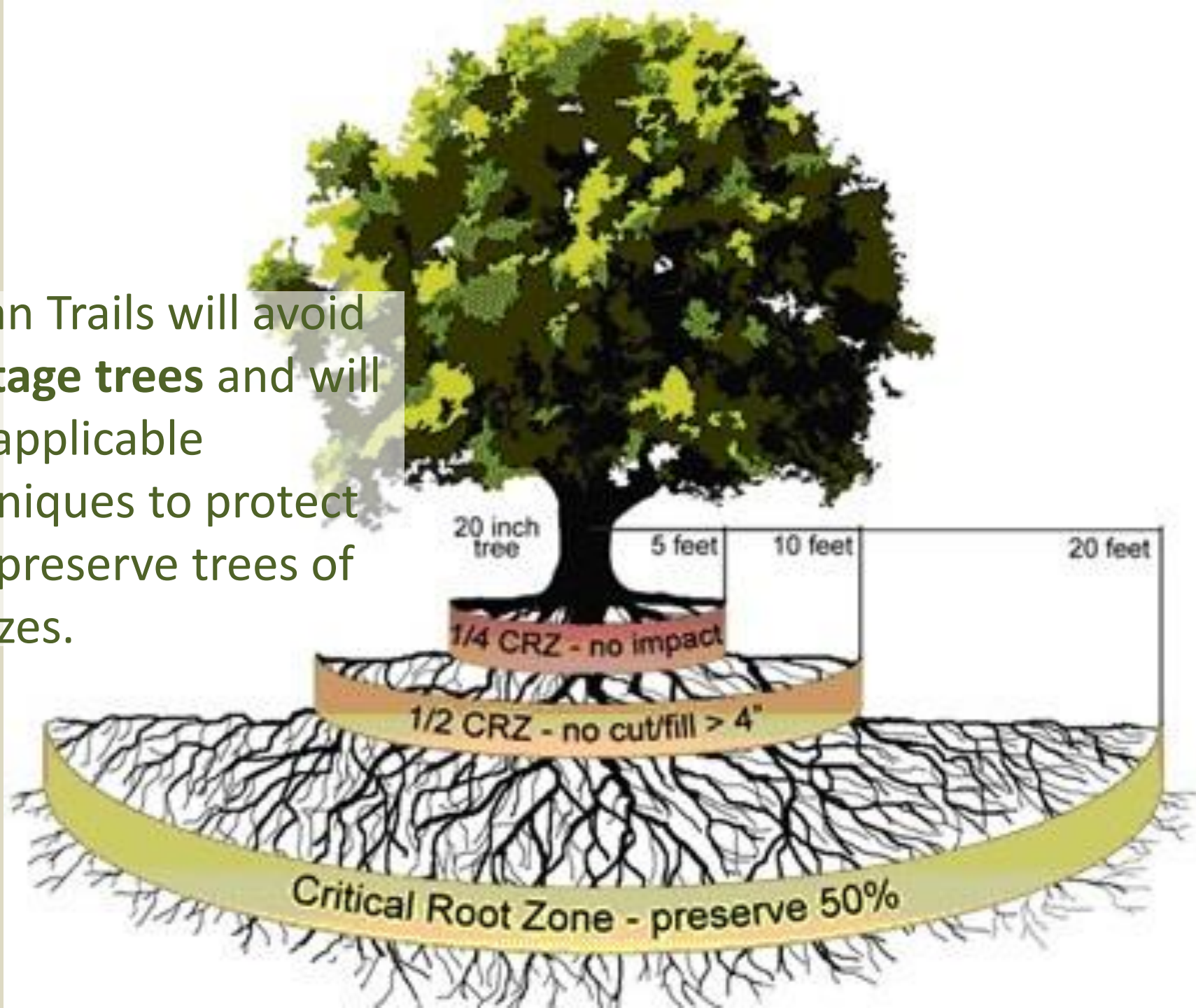
Catalyst to the UTMP:

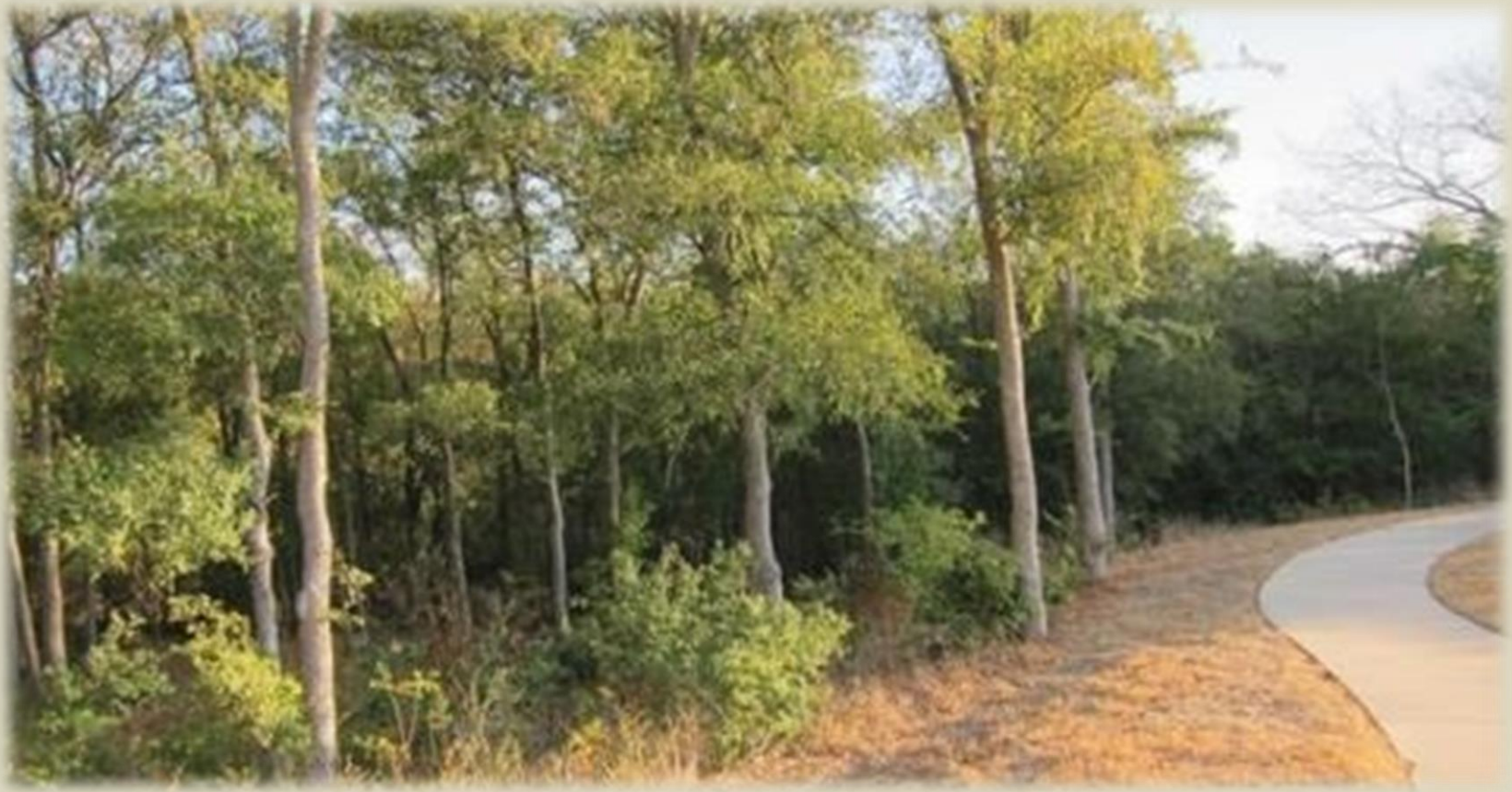
Resolution 20080424-064:

- PWD and PARD to develop comprehensive, interconnected trail plan.
- Coordinate with other Departments (AWU, AE, ARR, WPD) to implement trail plan.
- Provide:
 - Interdepartmental consultation and coordination ,
 - Development of map, and
 - Identification of other processes/plans that would aid implementation.



Urban Trails will avoid **heritage trees** and will use applicable techniques to protect and preserve trees of all sizes.





"Explore opportunities to encourage a development pattern that better protects public and private property, preserves floodplains, creeks and open spaces, and provides access and connectivity with greenways and trails."
- **Watershed Protection Ordinance**

Community Voices:
“Plant trees by
bicycle paths.”
- **Austin’s Urban
Forest Plan**



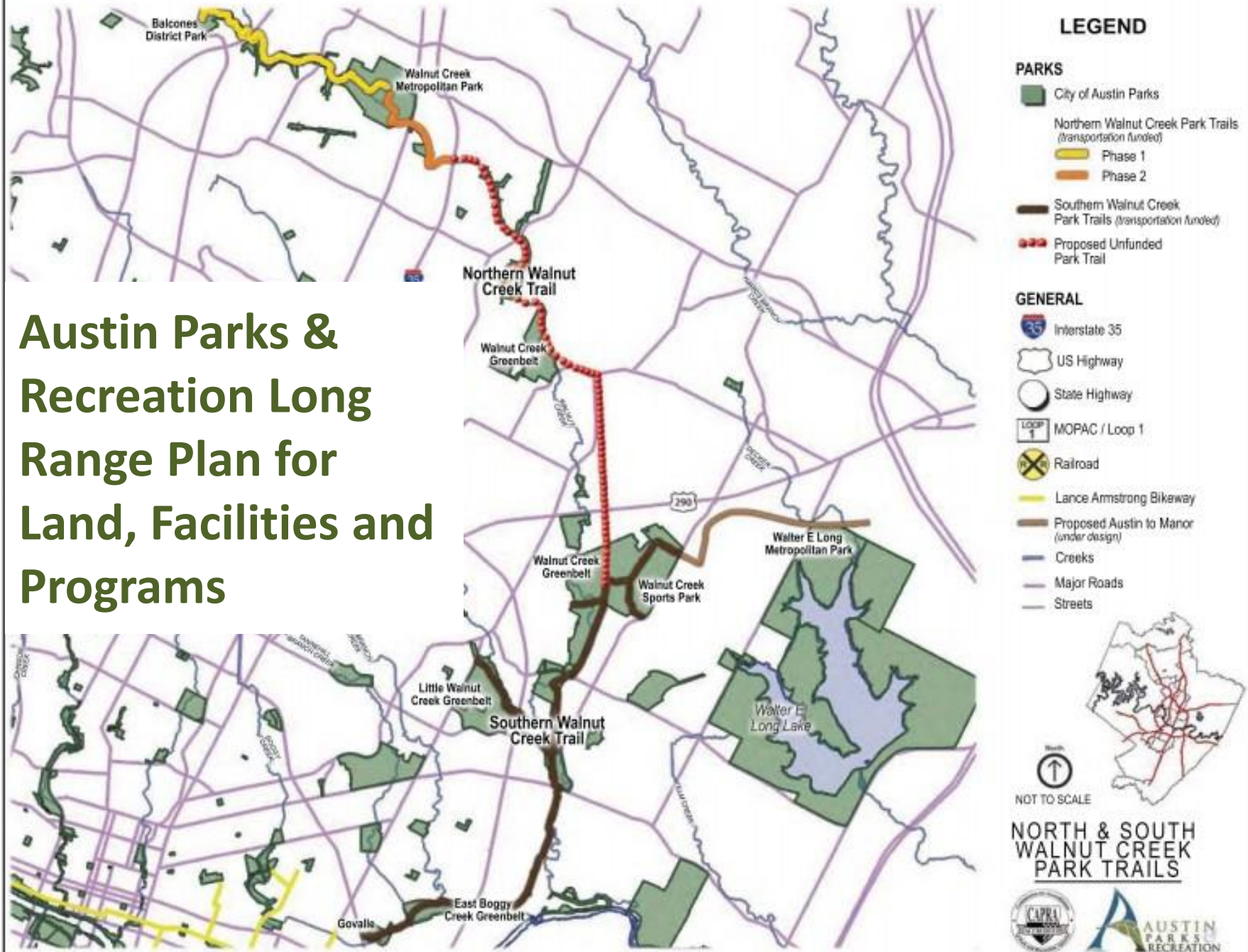
The City of Austin
Urban Forestry Board

Austin's Urban Forest Plan

A Master Plan for Public Property



Austin Parks & Recreation Long Range Plan for Land, Facilities and Programs



“Urban trails serve **recreation and transportation** functions, including biking and hiking, and also **provide important environmental benefits** by creating open space linkages and expanding the City of Austin’s green infrastructure network.”

- **Imagine Austin**



Why an Urban Trail Master Plan?

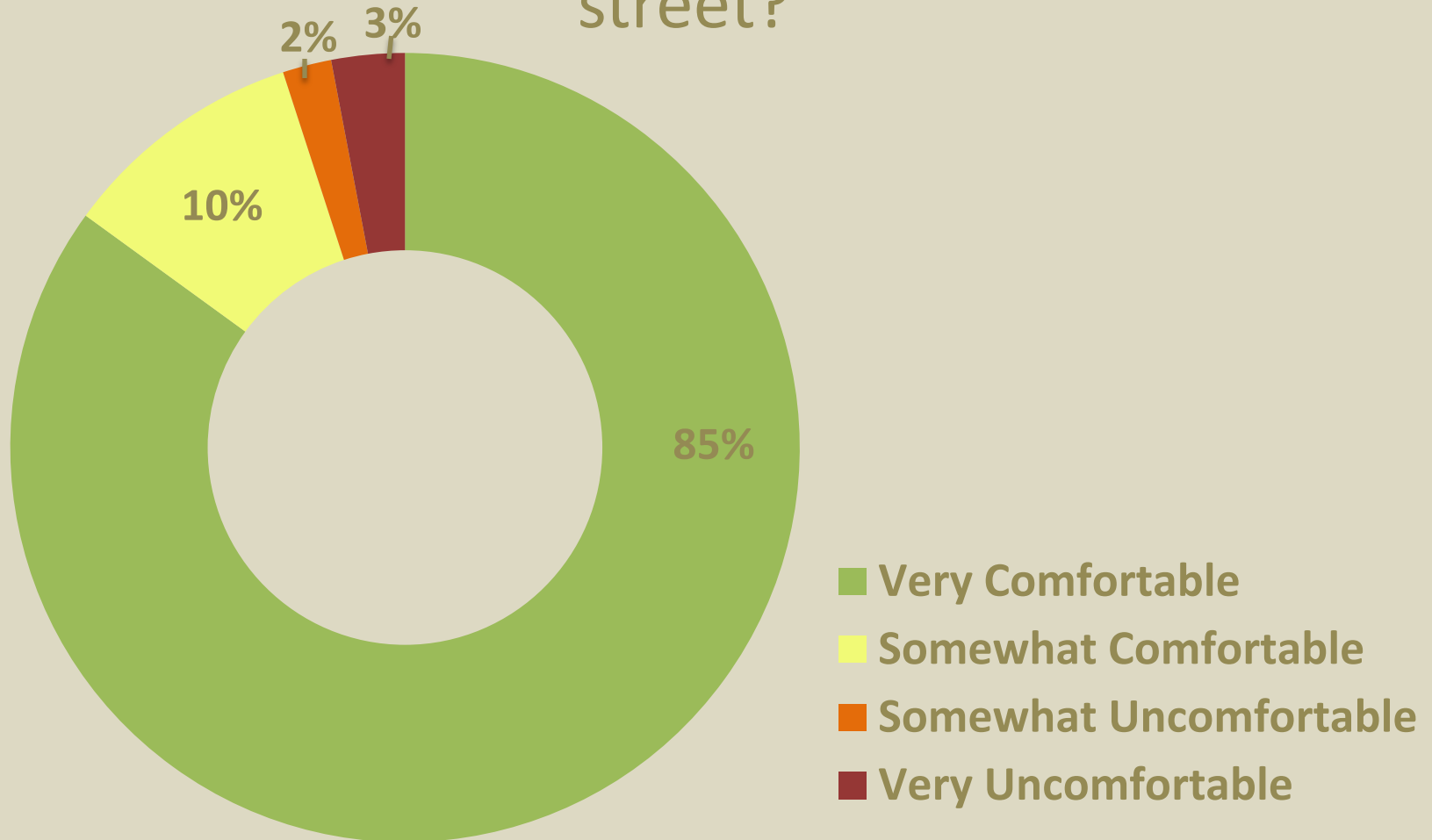


1. Implement existing plans/policies,
2. Create Urban Trail design guidelines, and
3. Plan for and implement Urban Trail maintenance.



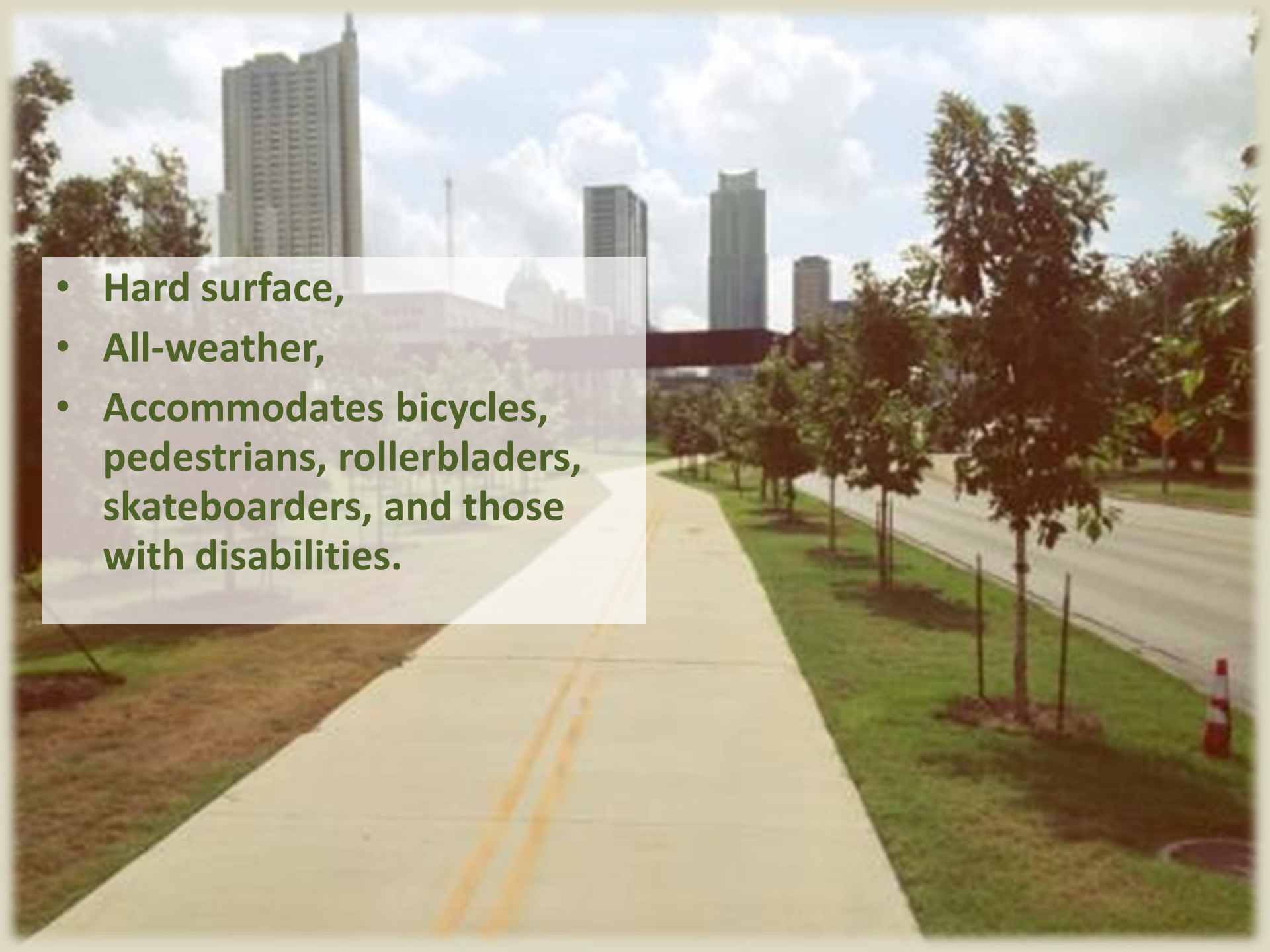
Public Input:

How comfortable do you feel riding your bicycle on a path or trail that is separate from the street?



What is an Urban Trail?



- 
- Hard surface,
 - All-weather,
 - Accommodates bicycles, pedestrians, rollerbladers, skateboarders, and those with disabilities.

Urban Trail Design Considerations



The Typical Urban Trail



Southern Walnut Creek Trail

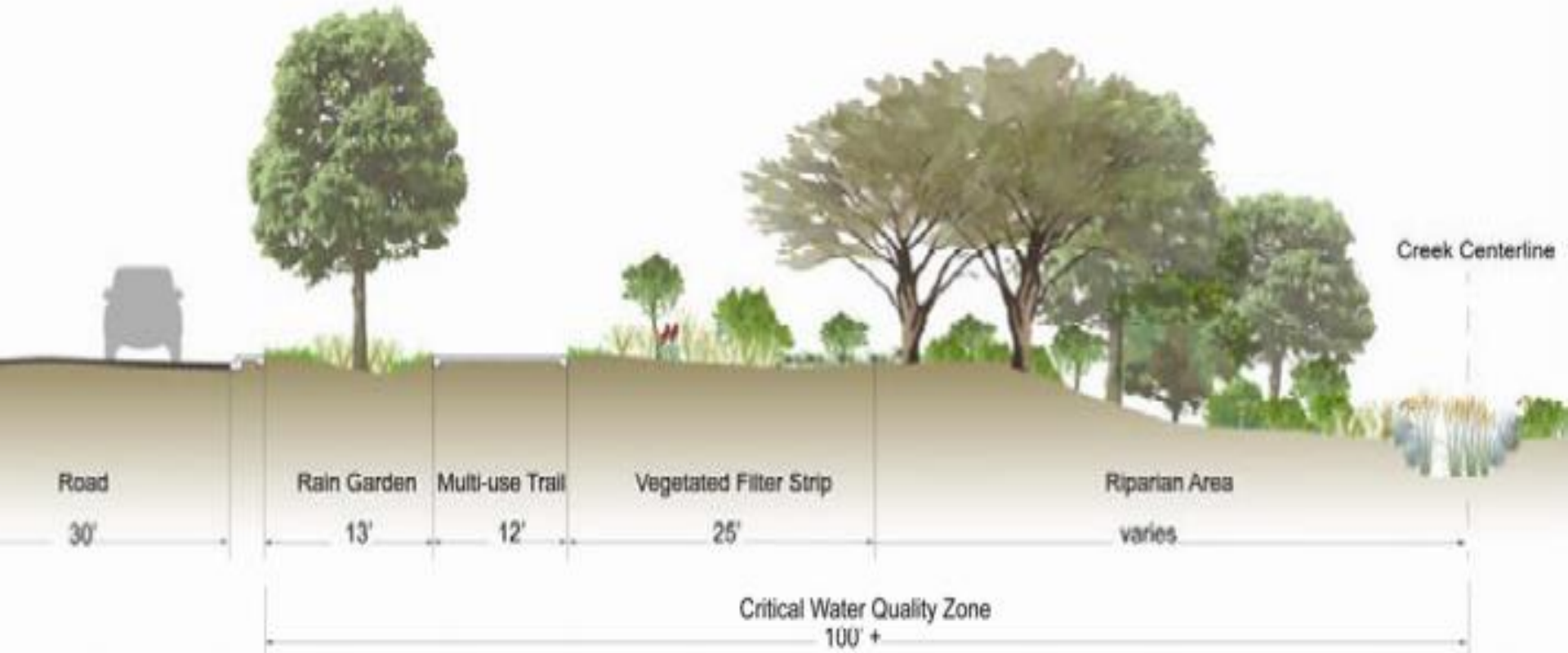
	Criteria
Standard Width	12'
Maintained Vegetated Shoulder	2'
Standard Vertical Clearance	10'

The Dual-Track Urban Trail



	Criteria
Standard Width	5' for pedestrian side 10' for bicyclist side
Maintained Vegetated Shoulder	5' user separation 2' shoulder
Standard Vertical Clearance	10'

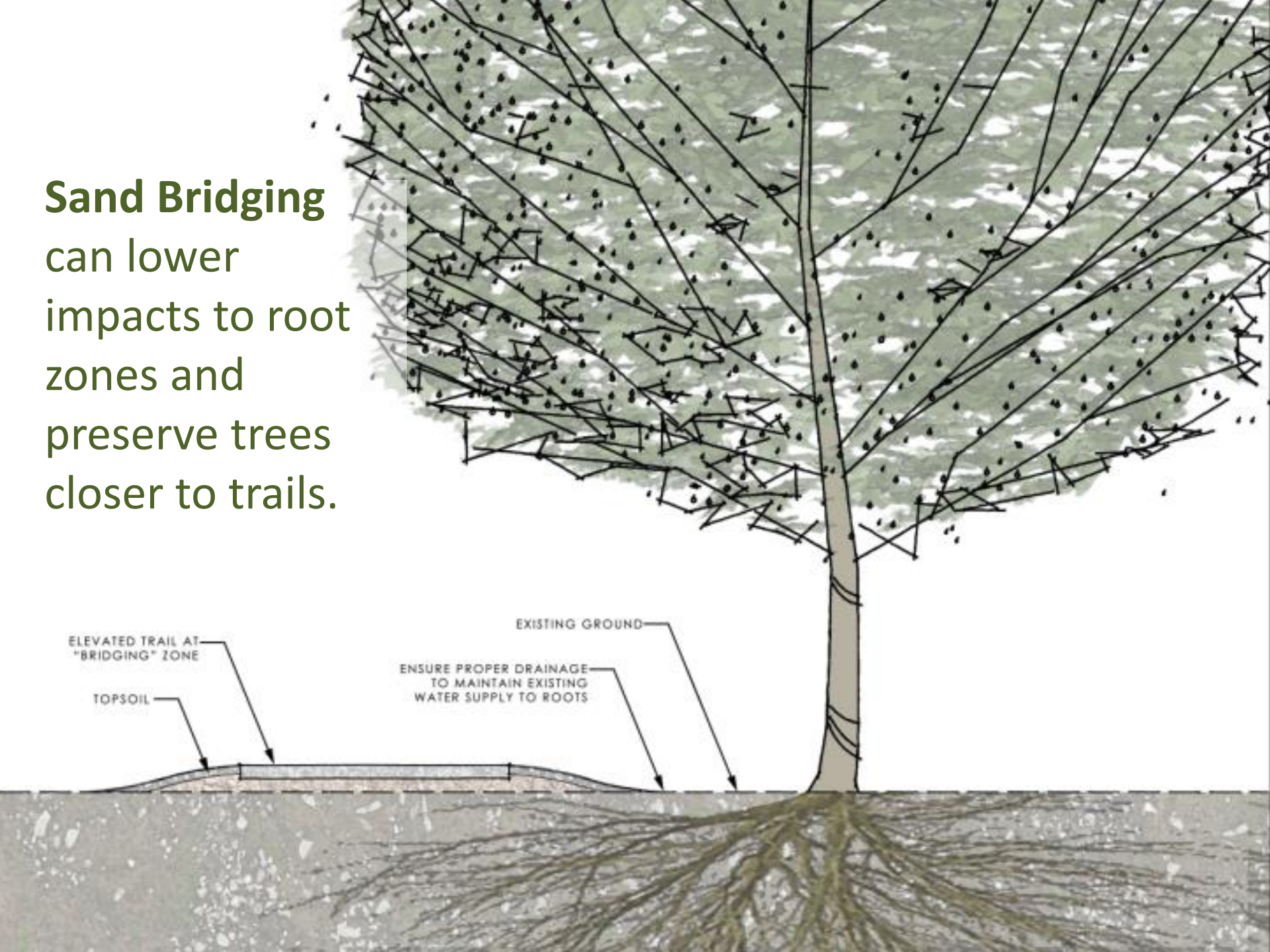




- **Diffuse** run-off as opposed to concentrated run-off.
- Creek crossings **as needed**.
- Informal **rain gardens** and **vegetated filter strips**.



Sand Bridging
can lower
impacts to root
zones and
preserve trees
closer to trails.



Lighting where appropriate



Design with nature



Wildlife Considerations

“For urban wildlife, trails are about connectivity too – corridors for movement through the urban landscape especially since our trails mostly follow waterways which are natural corridors through the city.”

– Dr. Kevin Anderson,
City of Austin
Wildlife Biologist



Security & emergency access



Wayfinding





Promote developer incentives



Create a sense of place

[illegible]

- Alignments shown are conceptual, and are intended to show geographic connectivity. More detailed routing, environmental evaluations and area connections will be developed for each corridor as funding is identified. Pending a more detailed analysis and adjacent, adequate bicycle/pedestrian facilities, a "no-build" option may be appropriate.*

Urban Trail Corridors – Prioritization Criteria



Attractors/Destinations



Population Within .5 Mile



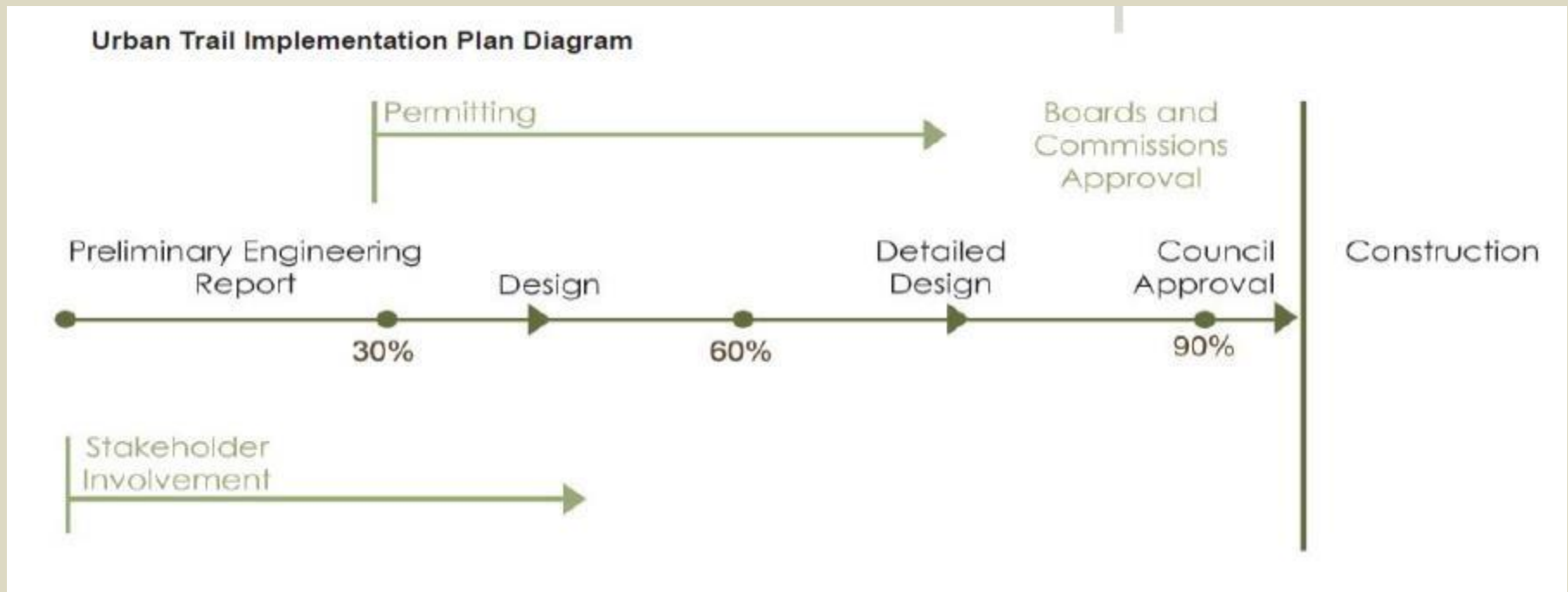
Connectivity



Community Support

Next Steps:

- Develop Trail Criteria Manual through the rule posting process.
- Work with CodeNEXT to codify development agreements.
- Interdepartmental Maintenance Agreement with PARD and WPO for maintenance.



Questions?