



PRESERVATION
—AUSTIN—

Tere O'Connell
President
Tom Stacy
President-Elect
August Harris III
First Vice President
Linda Team
Second Vice President

Paula Aaronson
Secretary
Jim DeCosmo
Treasurer
John Rosato
Immediate
Past President

Lisa Byrd
Danette Chimenti
Mandy Dealey
John Dorisi
Jerry Harris
Shelly Hemingson
Courtney Hoffman
Saundra Kirk
Brianna Landry

Jim League
Emily Little
Jennifer Marsh
Melenie Martinez
Peter Flagg Maxson
John Mayfield
Kim McKnight
Andrea McWilliams
Maureen Mettleauer

Nancy Nichols
Kristy Ozmun
Marion Sanchez
Tammy Shaklee
Nikhil Sinha
Eric Smith
Edward Tasch
Stephen Webb

Michael Hofferan, U.I. School of Arch.
Stacie Rychlik, Inherit Austin
John Rosato, Landmark Commission
Mike Ward, Pioneer Farms
STAFF
Jacqui Schraad
Executive Director

July 24, 2013

Fred Bothwell and Stan Bacon
West Point Society of Central Texas
Sent via e-mail

Re: Mt. Bonnell at Covert Park

Dear Mr. Bothwell and Mr. Bacon:

Thank you for meeting with the Preservation Committee today to discuss your proposed improvements for Mt. Bonnell at Covert Park (Mt. Bonnell). In particular, we appreciate your taking time to visit with us about how best to care for the historic monument at this site.

As we discussed, the marker is one of the oldest man-made elements on the property and is in character with the prevailing rustic, naturalistic vision for the site at the time that the land was donated for use as a public park. As such, the marker is a significant, distinctive and even beautiful feature that contributes to the overall historic character of the site. It is unfortunate that the marker is damaged and continues to deteriorate, but stone experts agree that it can be restored. We all agree that something must be done, and time is of the essence.

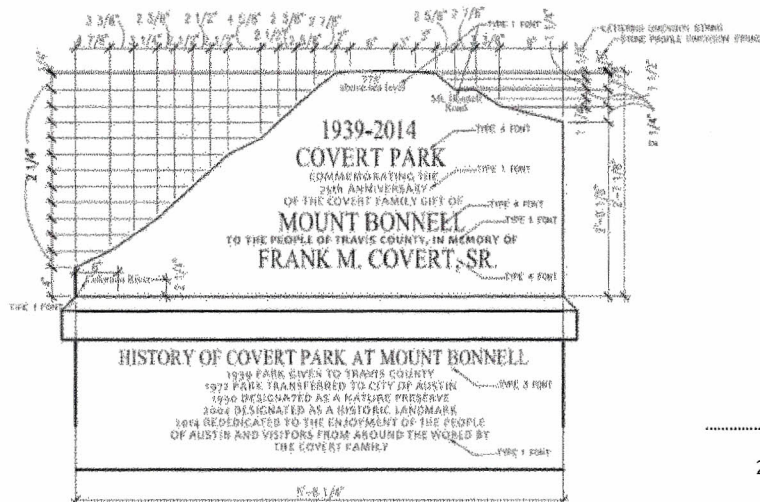
As you know, Preservation Austin fully supports the restoration of the marker on its existing site, in accordance with the Secretary of the Interior's Standards for the Treatment of Historic Properties. From our discussions today, we would expand our position to include approving the construction of a modest, well-designed, protective shelter over the restored monument. If the West Point Society so desires, we also can support the addition of a second monument in granite at the park, appropriately sited, using your original design, perhaps commemorating the park's 75th anniversary and the West Point Society's gift of park improvements. We hope that with this agreement - that the original marker be restored in its original location and a second marker be placed at the park - there will be no need to appeal the Historic Landmark Commission's decision to restore the original marker.

Your proposed improvements to the park as designed and funded by the West Point Society seek to improve the visitor experience and we agree that several components have merit: stair improvements for safety and access, lowering of a retaining wall for improved viewing, and creation of a seating area in the arbor. These modifications would affect non-historic features constructed in 1983 and we look forward to supporting those features that enhance and protect historic Mt. Bonnell.

Again, we thank you for your time and thoughtful discussion with Preservation Austin and for all of the work you have done for this beloved City Park. If we don't hear from you, we will follow up in a few days to confirm that we are in agreement about the best way forward.

Best Regards,

Tere O'Connell
President



Front View

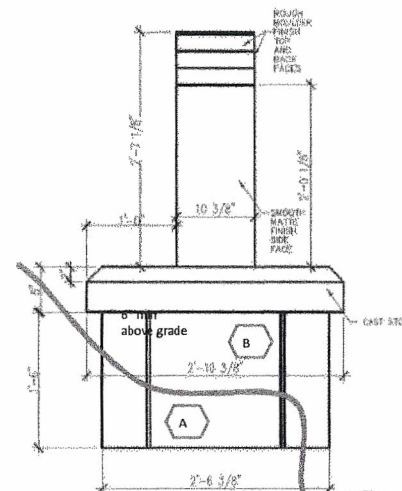
Not to Scale

Detail

- A. #5 Rebar, doweled 12" into bedrock, 6" above surface, epoxy anchor
- B. #4 Rebar, 12" OCEW, 2 Mats
- C.
- D.

Construction Sequence

1. Install Silt Fence and tree protection, in accordance with erosion control plan
2. Install construction safety fence
3. Clear and grub in area of marker, remove all dirt, debris, and all organic matter
4. Install anchors, reinforcing steel, concrete forms.
5. Place monolithic base
6. Install marker on base, in accordance with best practices from monument supplier
7. Install vertical slab/plaque
8. Remediate construction area



Side View

Not to Scale

Street Side

~5.5'

~7'

Parking Edge



Proposed Marker Installation
KC Commercial, LLC

Project Owner: _____
Project Address: Mt. Bonnell, Austin, TX