



Architects
Clayton&Little

Preliminary - Not for Construction - This drawing was prepared under the supervision of Paul Clayton. It is not to be used for regulatory approval, permitting or construction purposes.

The Stonewall

614 Thru 618 Blanco Street, Austin, Texas 78703

614 Thru 618 Blanco Street, Austin, Texas 78703





RESTORE & REUSE HISTORIC GATE



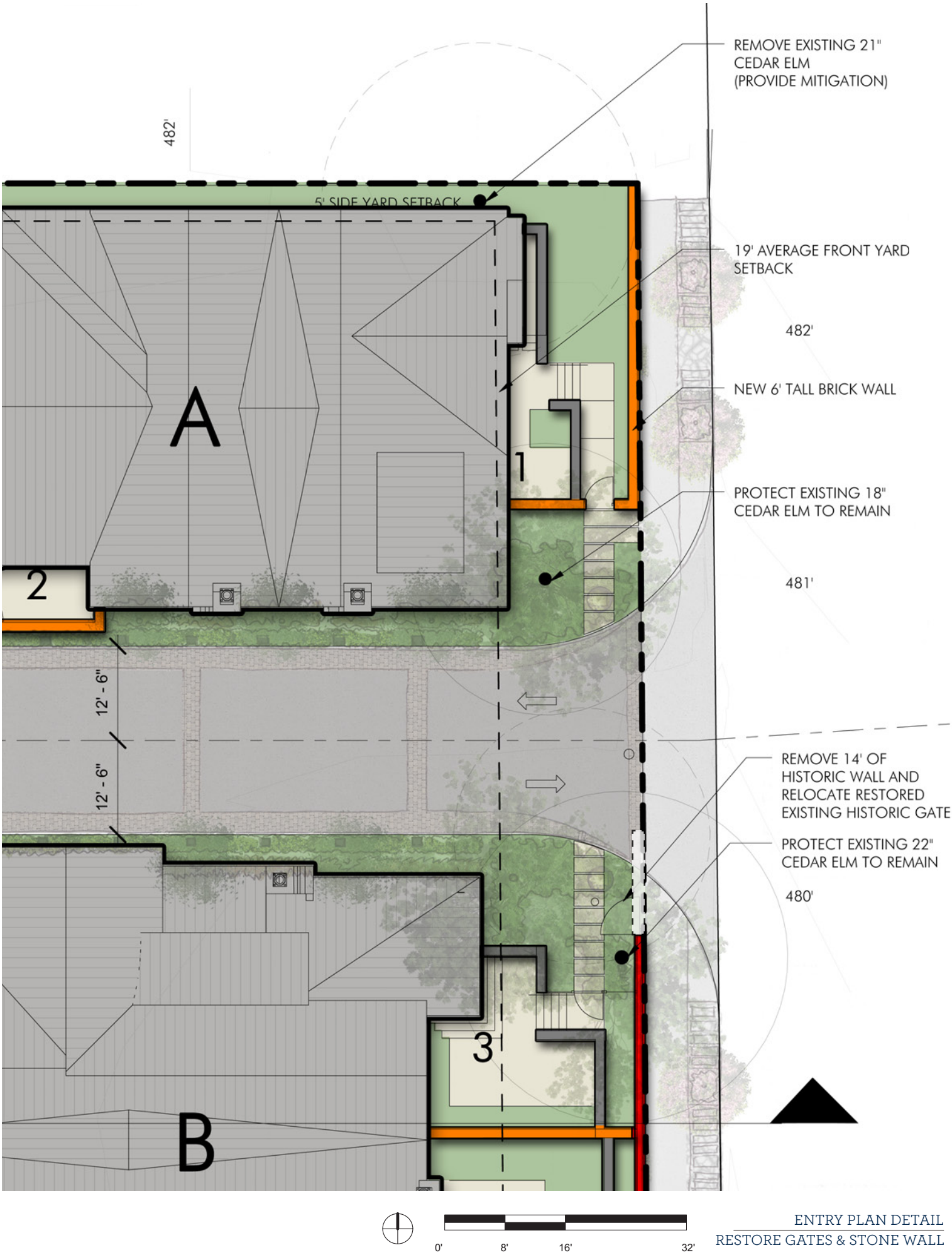
RESTORE & REUSE HISTORIC GATE

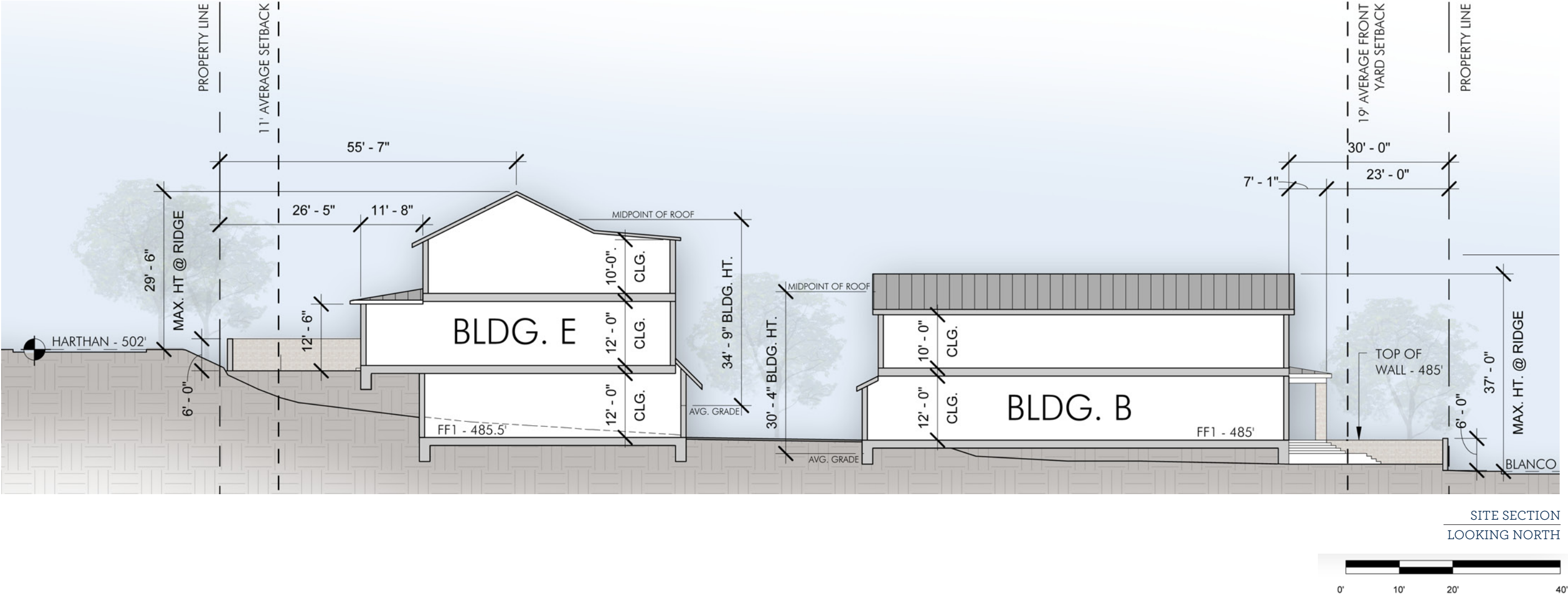


RESTORE & REUSE HISTORIC GATE



STABILIZE & RESTORE EXIST. STONE WALL



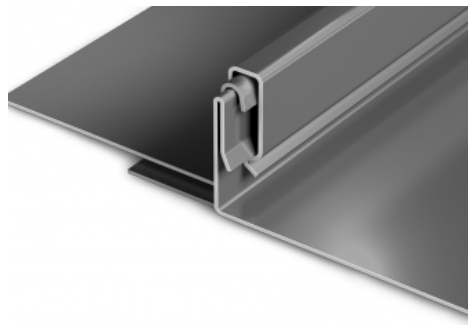


The Stonewall

614 Thru 618 Blanco Street, Austin, Texas 78703



EXTERIOR MATERIALS



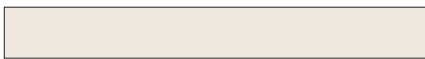
STANDING SEAM
METAL ROOF



SAWN LIMESTONE
LINTELS AND SILLS



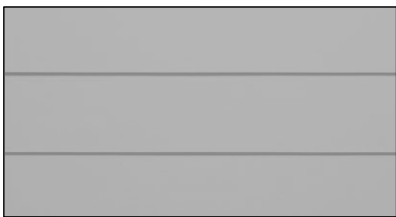
AUSTIN COMMON
BLEND (SIMILAR)



IVORY WINDOWS
METAL CLAD WOOD
(CERTAIN LOCATIONS)



BLACK WINDOWS
METAL CLAD WOOD
(MOST LOCATIONS)



PAINTED SIDING
MEDIUM GRAY



614 Thru 618 Blanco Street, Austin, Texas 78703

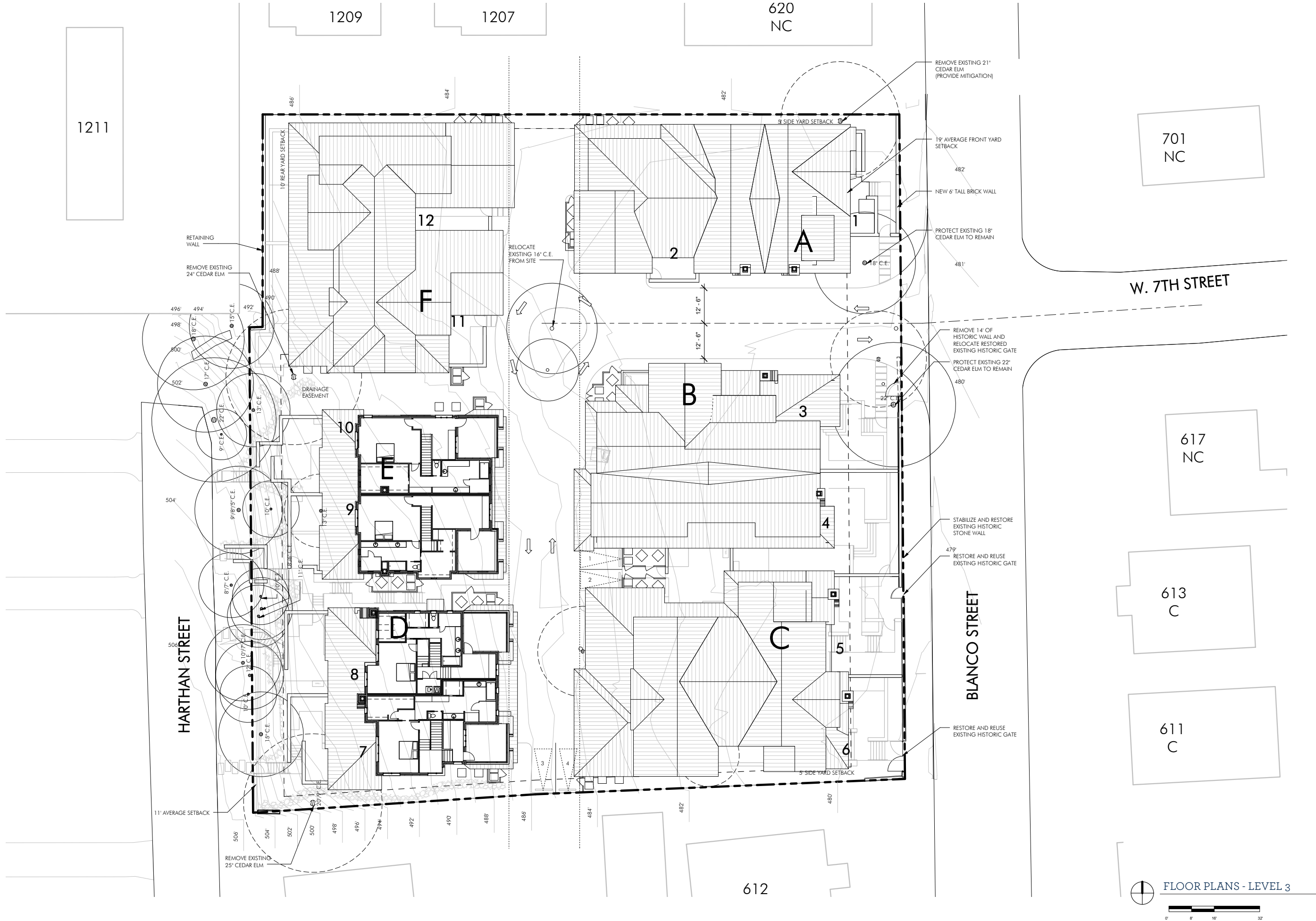


614 Thru 618 Blanco Street, Austin, Texas 78703



The Stonewall

614 Thru 618 Blanco Street, Austin, Texas 78703



FLOOR PLANS - LEVEL 3

