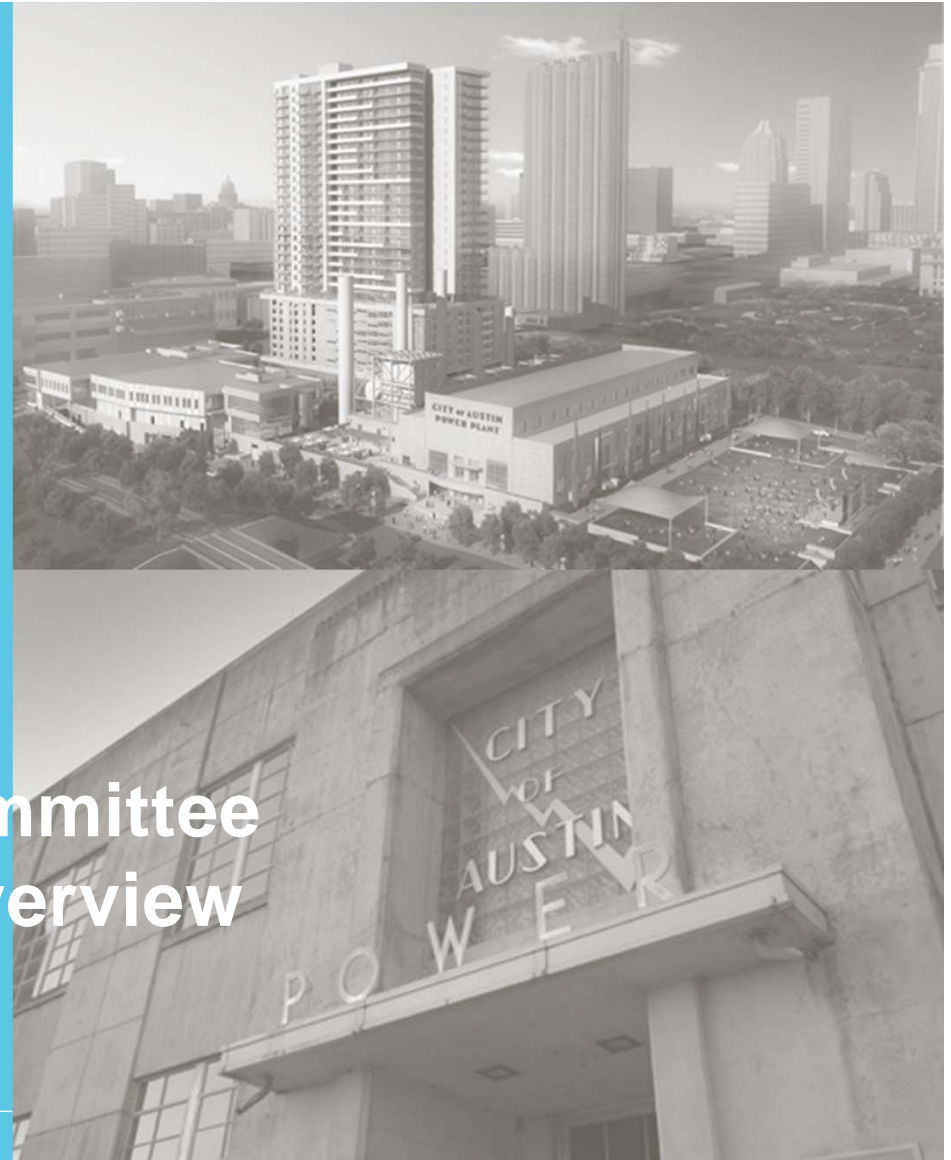




# MBE/WBE Advisory Committee athenahealth Project Overview

July 1, 2014



Partnership. Performance.



# Table of Contents

1. About athenahealth
2. About Avison Young
3. Project Overview
4. Project Schedule
5. SMBR Process and Progress



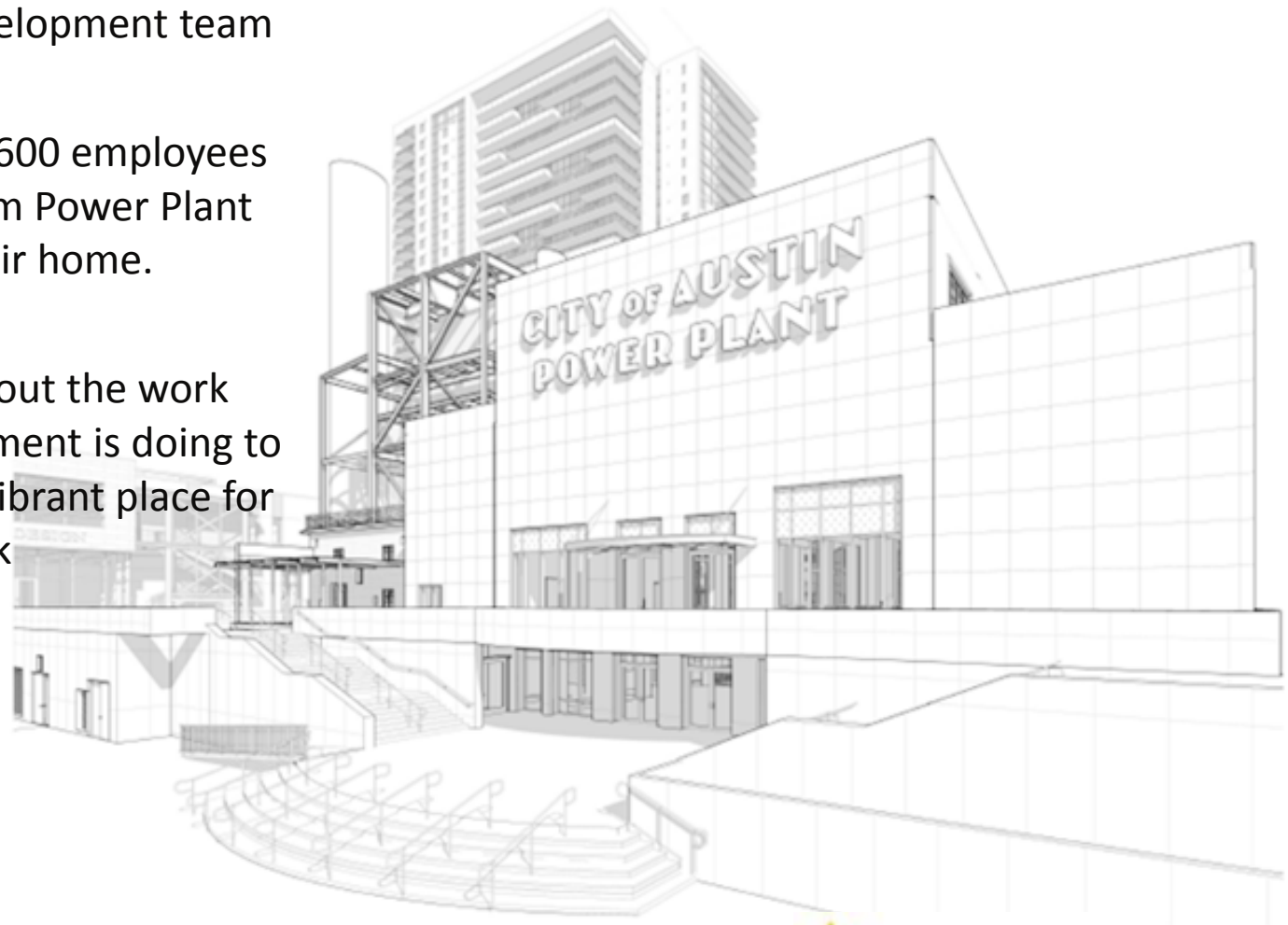
# athenahealth Snapshot

- Founded in 1997 as a women's health clinic to allow doctors to focus on patient care by easing administrative burdens and improving productivity
- Leading provider of cloud-based electronic health records, practice management and care coordination services
- Headquartered in Massachusetts with offices in Maine, North Carolina, New Jersey, Georgia, California, India, and now **Austin, TX**
- Total Employees company wide: 3,088
- \$595 mm in revenue in 2013
- Ranked #13 in Forbes' Fastest-Growing Tech Companies List in 2013
- Posted client collections: \$11.7 billion in 2013
- 53,886 providers on the athenahealth network as of Q1/2014



# athenahealth in Austin

- athenahealth envisions their new Austin office to be a hub for its Research and Development team
- We envision over 600 employees calling the Seaholm Power Plant and Austin, TX their home.
- We are excited about the work Seaholm Development is doing to make this area a vibrant place for us to live and work





# About Avison Young

## Avison Young at a Glance

Founded: 1978

Employees: 1,500+

Offices: 54

Real Estate Professionals: 600+

Property Under Management: 70 million SF+

Avison Young is a commercial real estate services firm:

- *Headquartered in Toronto, Ontario, AY is a collaborative, global firm owned and operated by its principals.*
- *Founded in 1978, providing value-added, client-centric investment sales, leasing, advisory, management, to owners and occupiers of Corporate Real Estate*

## North America presence



### Transaction Services

- Tenant representation, lease acquisition/disposition
- Investment acquisition and disposition
- Landlord representation— office, industrial, retail, build-to-suit, multi-family

### Consulting & Advisory Services

- Portfolio review and analysis
- Valuation and appraisal
- Benchmarking
- Transaction management
- Asset rationalization
- Mergers and acquisitions
- Workplace solutions
- Acquisitions and dispositions

### Management Services

- Project management
- Property and operations review
- Property/facility management
- Tenant coordination and relations
- Financial reporting
- Lease administration
- Operations consulting
- First stage lease review

### Enterprise Solutions

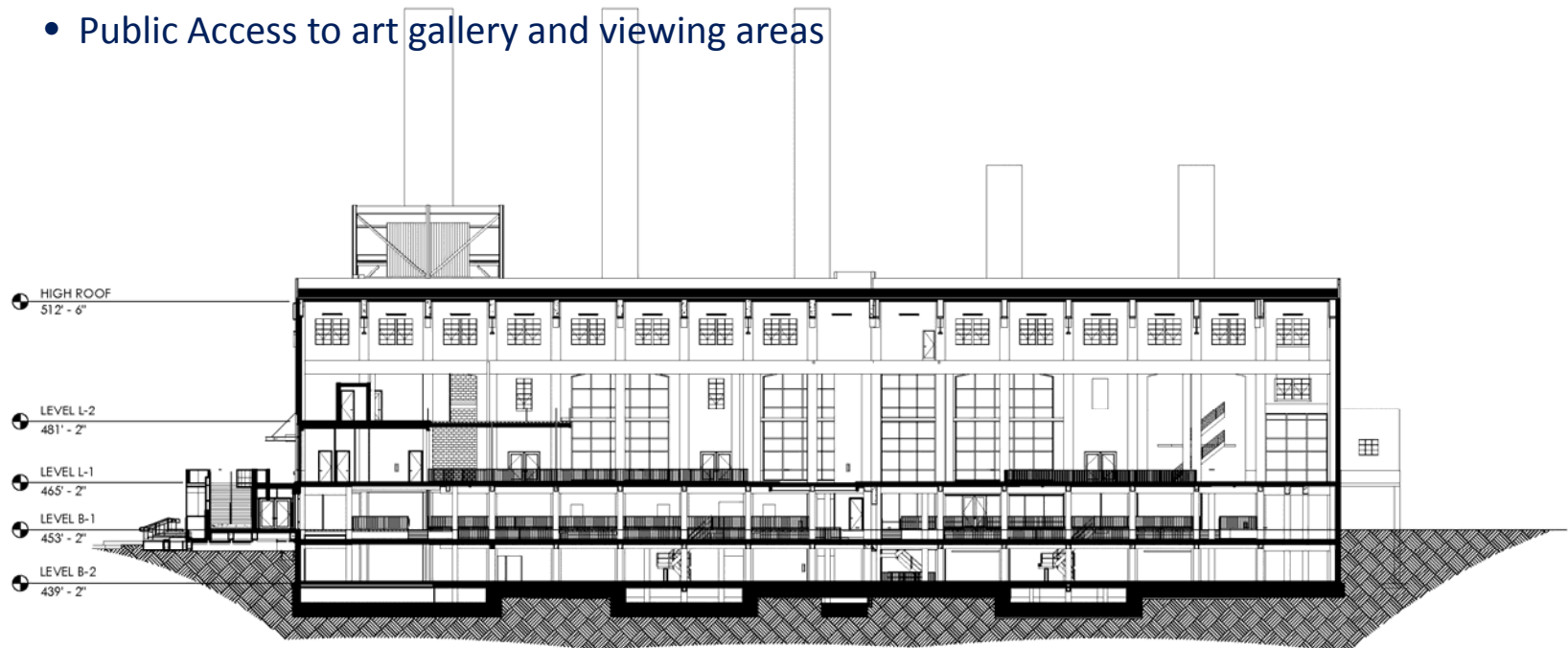
- Integrated services coordination
- Transaction management
- Optimization strategies
- Portfolio lease administration
- Project coordination and reporting



# About the Project

## Project Description:

- 4 Story – 103,000 SF Commercial Office Space
- State of the art conferencing capabilities
- Employee lounge and collaboration areas
- Employee Fitness Area
- Showers and Indoor Bicycle Storage
- Quiet Rooms
- Public Access to art gallery and viewing areas



## Overview of plans



# Construction Schedule Overview

Task	Start	Complete
Construction Documents and Permitting	May, 2014	July, 2014
Construction	Mid-July, 2014	End of September, 2014
Interior Structure	July, 2014	September, 2014
Mechanical/Electrical/Plumbing	August, 2014	September, 2014
Certificate of Occupancy	Last week of September	
Commissioning and FFE	October, 2014	
Go Live!	November 1, 2014	



## Good Faith Efforts to date



Thank you.



Intelligent  
Real Estate  
Solutions

---

[avisonyoung.com](http://avisonyoung.com)

---

©2013 Avison Young Inc. All rights reserved.

