

T R A V I S C O U N T Y

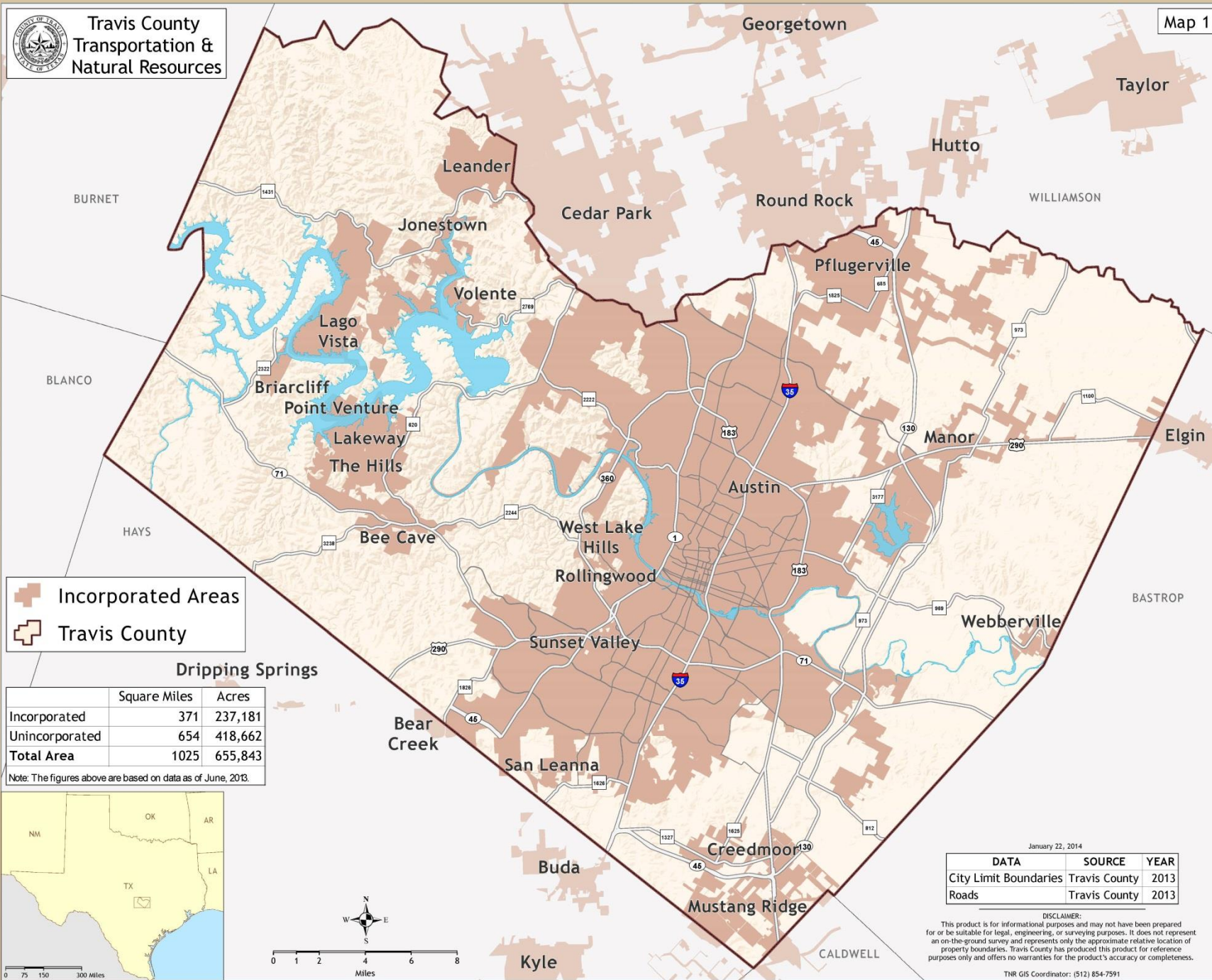


LAND WATER AND TRANSPORTATION PLAN



Public Review and Comment

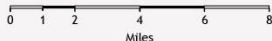
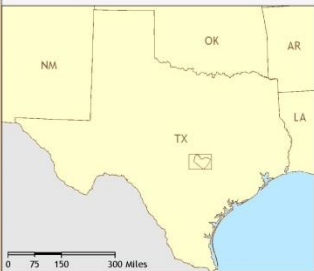
August - September, 2014



- Incorporated Areas
- Travis County

	Square Miles	Acres
Incorporated	371	237,181
Unincorporated	654	418,662
Total Area	1025	655,843

Note: The figures above are based on data as of June, 2013.



January 22, 2014

DATA	SOURCE	YEAR
City Limit Boundaries	Travis County	2013
Roads	Travis County	2013

DISCLAIMER:
This product is for informational purposes and may not have been prepared for or be suitable for legal, engineering, or surveying purposes. It does not represent an on-the-ground survey and represents only the approximate relative location of property boundaries. Travis County has produced this product for reference purposes only and offers no warranties for the product's accuracy or completeness.

TNR GIS Coordinator: (512) 854-7591

Balancing Development and Conservation

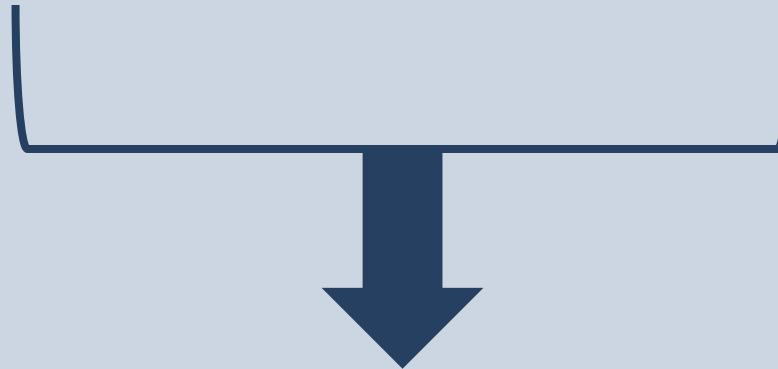


CONSERVATION CONCEPT

**Establish Conservation Areas
& River and Creek Corridors**

DEVELOPMENT CONCEPT

**Establish Activity Centers &
Transportation Corridors**

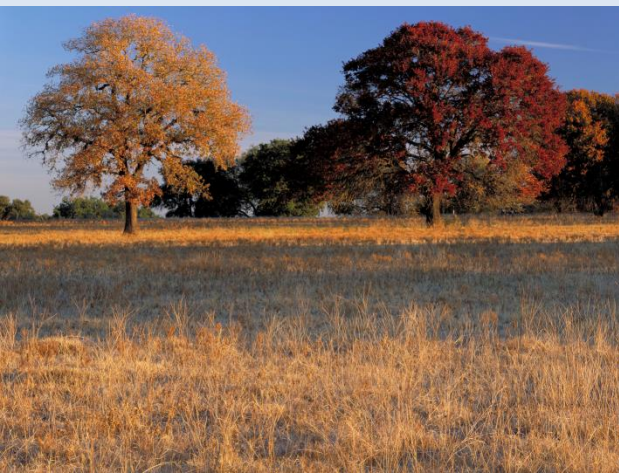


GROWTH GUIDANCE CONCEPT



Conservation Areas

- **Protect area-wide water quality and supplies**
- **Minimize fragmentation**
- **Expand recreational opportunities**
- **Protect viewsheds**
- **Protect real estate asset**





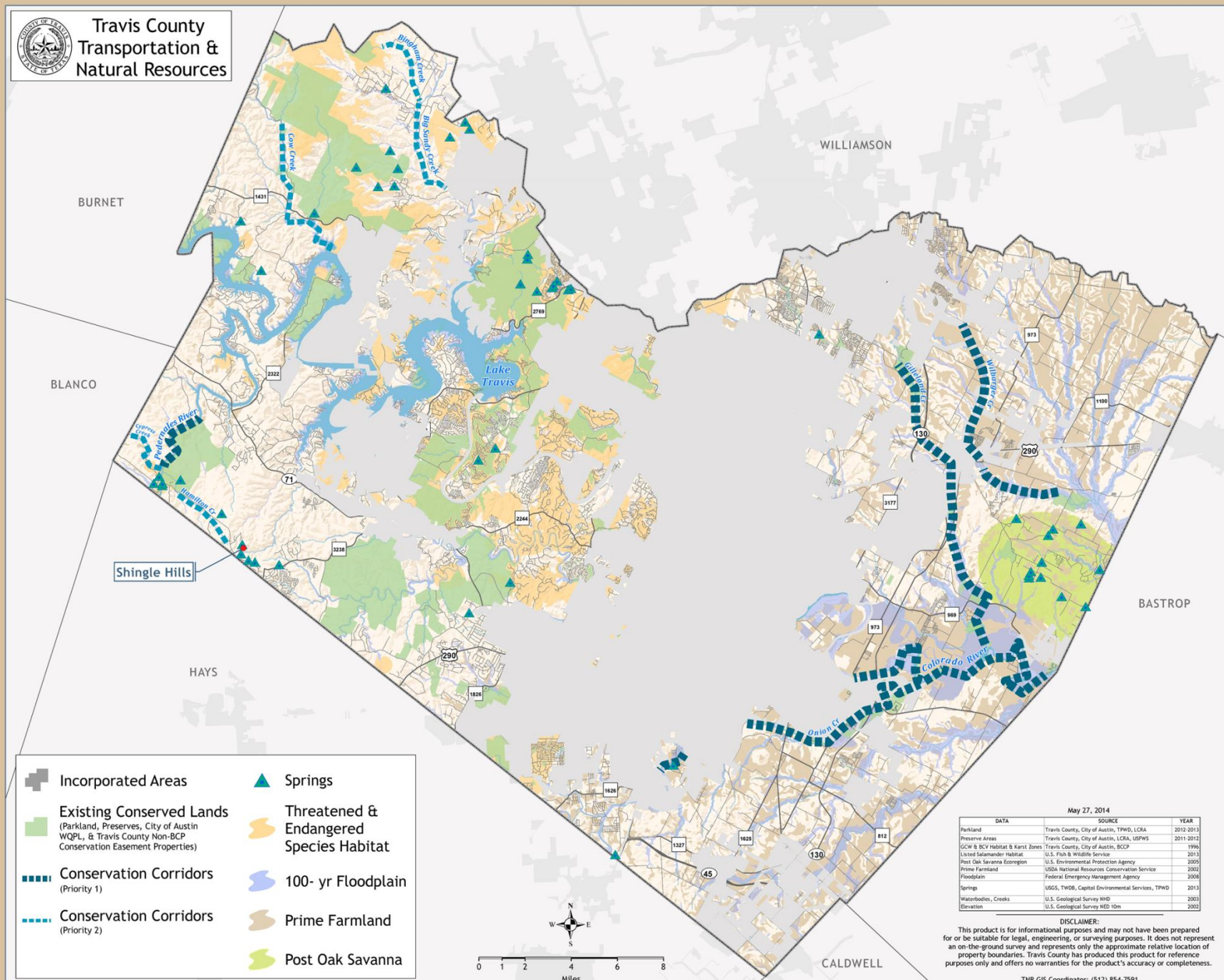
River & Creek Corridors

- **Lessen stormwater impacts**
- **Protect water quality and supply**
- **Provide wildlife corridors**
- **Accommodate trails & connectivity**
- **Improve recreational access to water**
- **Enhance property values**





Travis County Transportation & Natural Resources



- Incorporated Areas
- Existing Conserved Lands
(Parkland, Preserves, City of Austin
WQPL, & Travis County Non-BCP
Conservation Easement Properties)
- Conservation Corridors
(Priority 1)
- Conservation Corridors
(Priority 2)
- Springs
- Threatened &
Endangered
Species Habitat
- 100- yr Floodplain
- Prime Farmland
- Post Oak Savanna



May 27, 2014		
DATA	SOURCE	YEAR
Parkland	Travis County, City of Austin, TPWD, LCRA	2012-2013
Preserve Areas	Travis County, City of Austin, LCRA, USFWS	2011-2012
GCW & SCV Habitat & Karst Zones	Travis County, City of Austin, BCCP	1996
Listed Salamander Habitat	U.S. Fish & Wildlife Service	2013
Pied Oak Savanna Ecotone	U.S. Environmental Protection Agency	2009
Prime Farmland	USDA National Resources Conservation Service	2002
Floodplain	Federal Emergency Management Agency	2008
Springs	USGS, TWDB, Capital Environmental Services, TPWD	2013
Waterbodies, Creeks	U.S. Geological Survey NHD	2003
Elevation	U.S. Geological Survey NED 10m	2002

DISCLAIMER:
This product is for informational purposes and may not have been prepared for or be suitable for legal, engineering, or surveying purposes. It does not represent an on-the-ground survey and represents only the approximate relative location of property boundaries. Travis County has produced this product for reference purposes only and offers no warranties for the product's accuracy or completeness.

TNR GIS Coordinator: (512) 854-7591

Land Conservation Concept



Opportunities & Challenges

- Ecologically diversity
- Regionally significant water resources
- **Abundance of prime farmland**
- Floodplain-templates for corridors
- Springs & other resources co-located
- **Geographic imbalance**



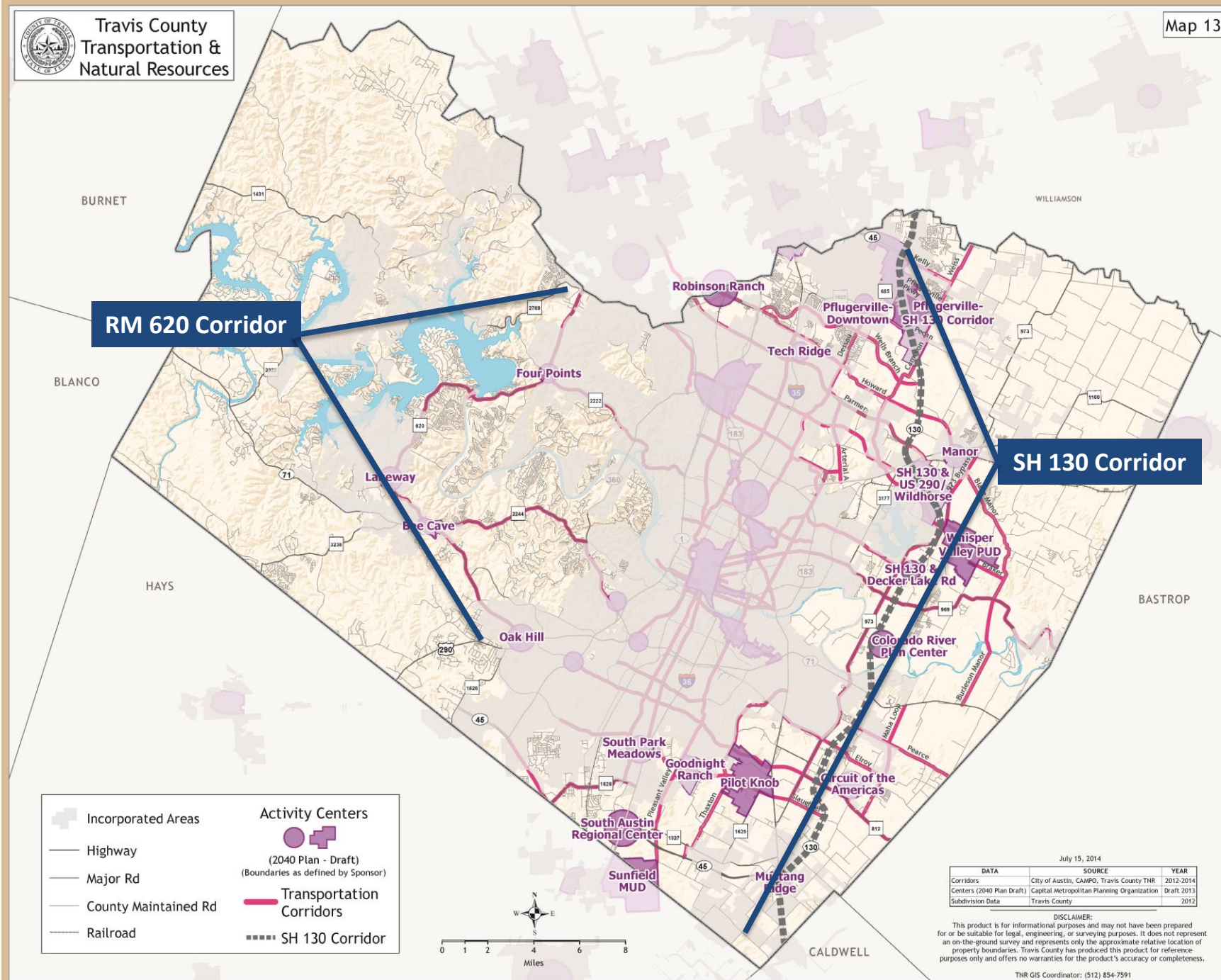
Conservation East

- **Complete Onion Creek Greenway**
- **Complete Gillelland Creek Greenway**
- **Continue Colorado River Corridor Conservation**
- **Initiate farmland conservation program**
- **Initiate Post Oak/Prairie/Floodplain conservation program**



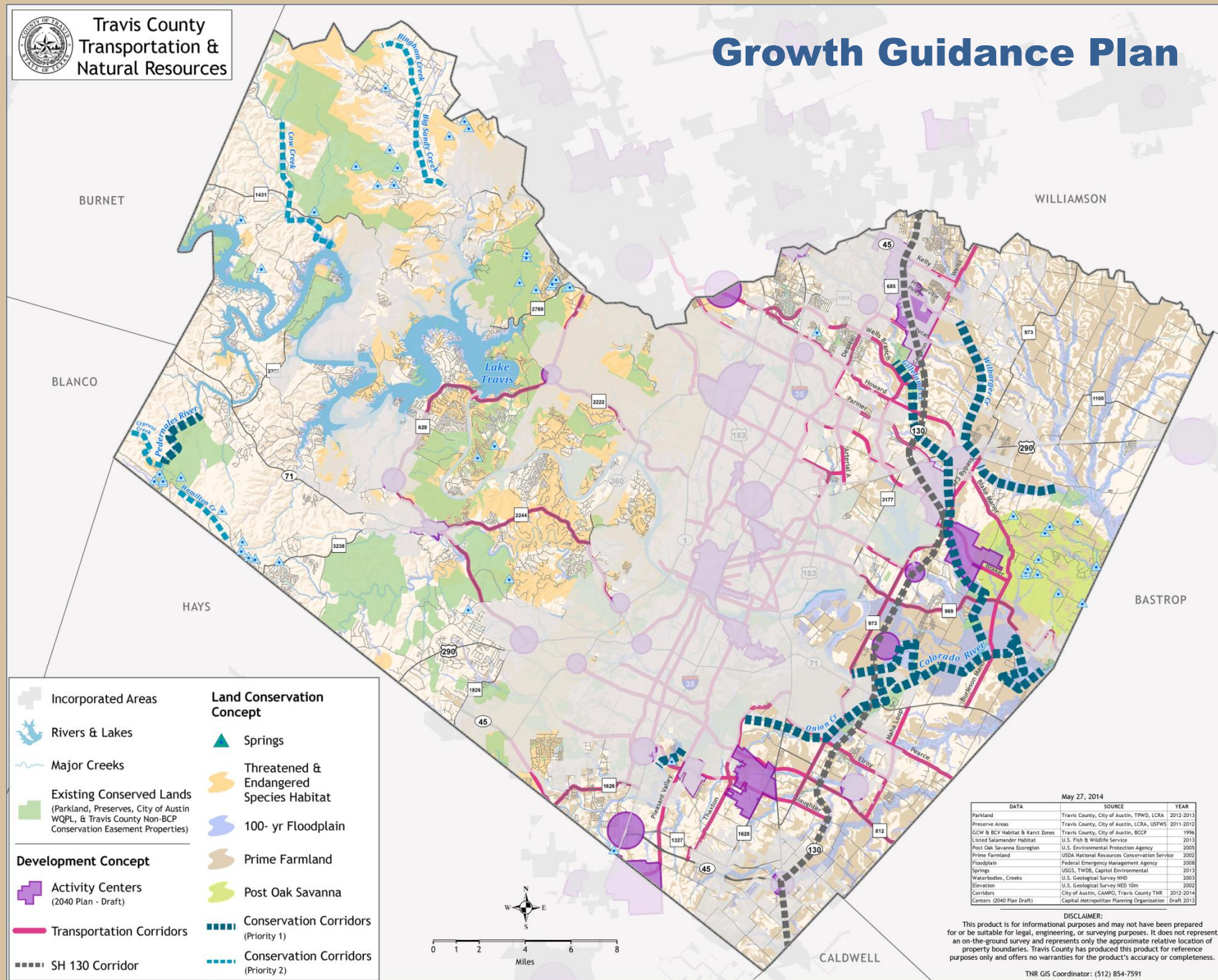
Conservation West

- **Complete BCP Land Acquisition**
- **Continue Pedernales River Corridor Conservation**
- **Maintain Hamilton Creek & Cypress Creeks as secondary corridors**
- **Maintain Cow Creek & Big Sandy Creek as secondary corridors**





Growth Guidance Plan



May 27, 2014

DATA	SOURCE	YEAR
Parkland	Travis County, City of Austin, TPWD, LCRA	2012-2013
Preserve Areas	Travis County, City of Austin, LCRA, USFWS	2011-2012
GCW & BCY Habitat & Karst Zones	Travis County, City of Austin, BCCP	1996
United Salamander Habitat	U.S. Fish & Wildlife Service	2013
Post Oak Savanna Ecoregion	U.S. Environmental Protection Agency	2005
Prime Farmland	USDA National Resources Conservation Service	2007
Floodplain	Federal Emergency Management Agency	2006
Springs	USGS, TWDB, Capital Environmental	2013
Waterbodies, Creeks	U.S. Geological Survey NHD	2009
Elevation	U.S. Geological Survey NED 10m	2002
Corridors	City of Austin, CAMPO, Travis County TNR	2012-2014
Centers (2040 Plan Draft)	Capital Metropolitan Planning Organization	Draft 2011

DISCLAIMER:
This product is for informational purposes and may not have been prepared for or be suitable for legal, engineering, or surveying purposes. It does not represent an on-the-ground survey and represents only the approximate relative location of property boundaries. Travis County has produced this product for reference purposes only and offers no warranties for the product's accuracy or completeness.

TNR GIS Coordinator: (512) 854-7591

Opportunities and Challenges



- Focuses attention on areas where development and conservation interests need consideration
- **Compact development consumes less land, allows more land to be conserved and provides benefits**
- Comprehensive bike/ped trail system developed from interconnecting transportation and conservation corridors
- Transportation Corridors cross numerous flood plains causing areas of potential conflict
 - Blake Manor Rd. River crossing conflicting with eastern Conservation interests
- Location of the BCP and topography limit Transportation Corridor development in western Travis County

Opportunities and Challenges



- **Development pressure greater east than west**
- **Opportunities to conserve ahead of development**
- Eastern river & creek corridors serve population centers
- Manor links Gilleland and Wilbarger Creeks
- **Conservation of Post Oak Savannah/Prime Farmland/River Floodplain most time sensitive**



LWTP Uses

- **Set CIP Priorities**
- **Guide growth-related policies**
- **Guide collaborative planning**
- **Guide public/private partnerships**
- **Sets legislative agenda**
- **Guides annual budgets & work plans**

WE NEED YOUR INPUT!



Travis County wants your feedback on the draft plan to ensure the LWTP reflects local values and priorities.

HOW DO I GET INVOLVED?



Participate in our online survey!

The survey opens on August 15th – find it on our project website:

www.co.travis.tx.us/tnr/lwtp

GET INVOLVED



www.co.travis.tx.us/tnr/lwtp/

TRAVIS
COUNTY
TX★GOV

SELECT LANGUAGE ▼

Google™ Custom Search

SEARCH

DIRECTORY ▼GOVERNMENT ▼JUSTICE ▼BUSINESS ▼RESIDENT ▼ONLINE SERVICES ▼

LWTP

Engagement Schedule

Project Materials

Draft Plan

Home > TNR > LWTP > Home

LAND WATER AND TRANSPORTATION PLAN

The population of Travis County is forecasted to grow from the 2010 census count of 1 million by approximately 50% to 1.5 million people by 2035. Travis County must be prepared to meet the increasing demand for services that will accompany this substantial growth. The Land, Water, and Transportation Plan (LWTP) is a set of long-term goals and policies that will provide a framework for how the county protects its land and water resources, builds transportation and park systems, and efficiently delivers related services to residents. The Commissioners Court will use the LWTP to guide development and conservation of resources within Travis County.

LWTP Development Process

DRAFT
LWTP
Based on
existing plans

PUBLIC
ENGAGEMENT
Gather input on
draft LWTP

UPDATE
LWTP
Based on analysis
of public input

PRESENT
FINAL LWTP
Commissioner
Court Adoption

LWTP will accomplish the following goals:

- Identify where the county will incent development
- Identify where the county will incent conservation
- Provide guidance to minimize incompatible land uses
- Guide consistent collaboration with other agencies at the regional and local level
- Help coordinate private and public investment

TRAVIS COUNTY
LWTP
LAND WATER AND TRANSPORTATION PLAN

Contact

Arin Gray, Public
Engagement Consultant
(512) 533-9100 Ext. 12
lwtp@co.travis.tx.us

[Sign up for Updates](#)



We will come to you!

We are currently scheduling outreach efforts for community groups across the county!

Interested?

[Send us an email](#) with your organizations name and meeting information

GET INVOLVED



Follow us on Facebook and Twitter

Subscribe to email updates

Send your request to lwtp@co.travis.tx.us

GET INVOLVED



Attend a public meeting!

Travis County is scheduling public meetings for the last three weeks in September. Get meeting notices via:

- our website
- social media sites
- by email update