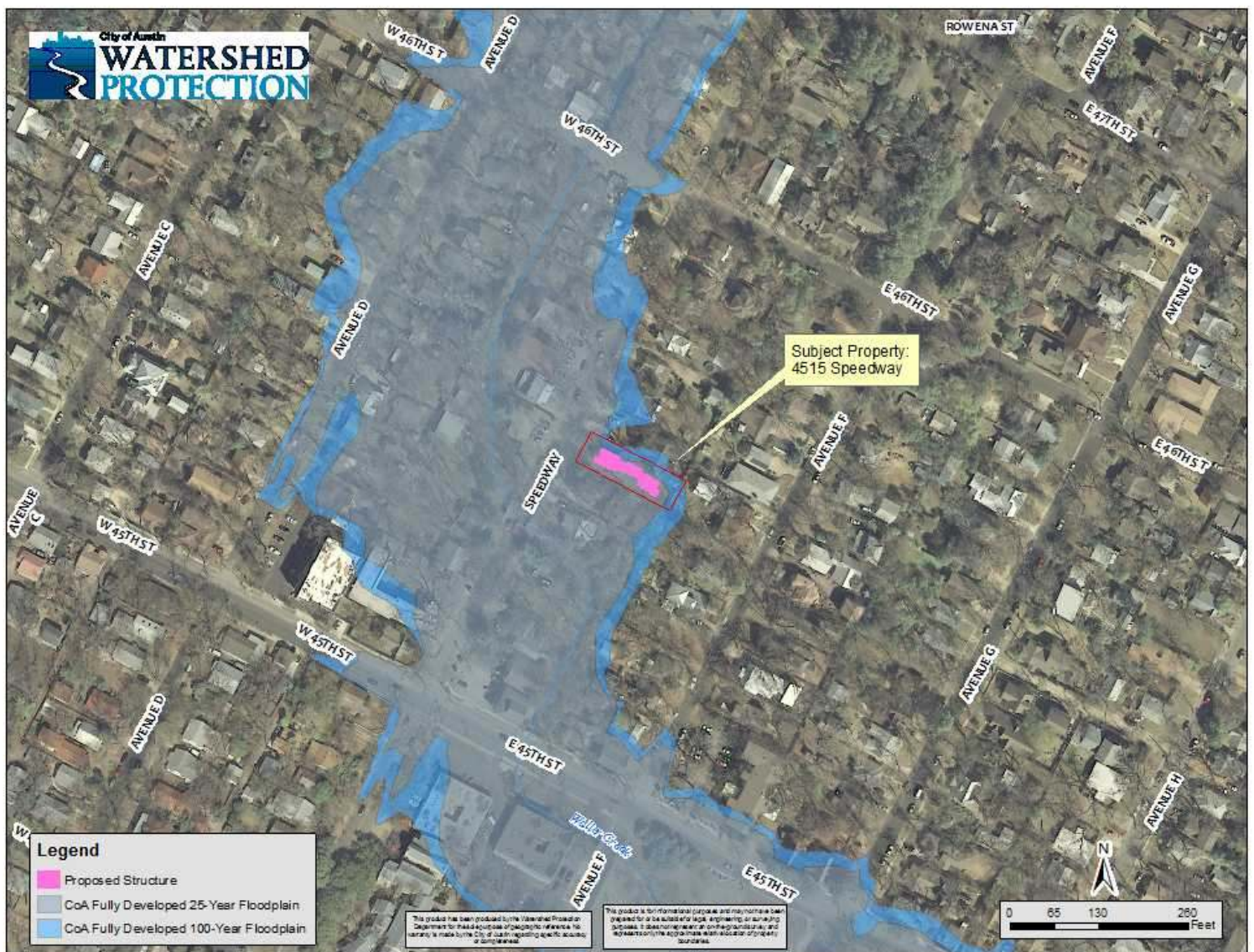


Backup Information Packet

Concerning a public hearing to consider an ordinance authorizing floodplain variance to construct a new 2 story duplex at 4515 Speedway, which is in the 25-year and the 100-year floodplains of Waller Creek.

Site Location Map with Current Floodplains for 4515 Speedway



Zoomed in Site Location Map at 4515 Speedway

