

HOTEL VAN ZANDT Site Plan

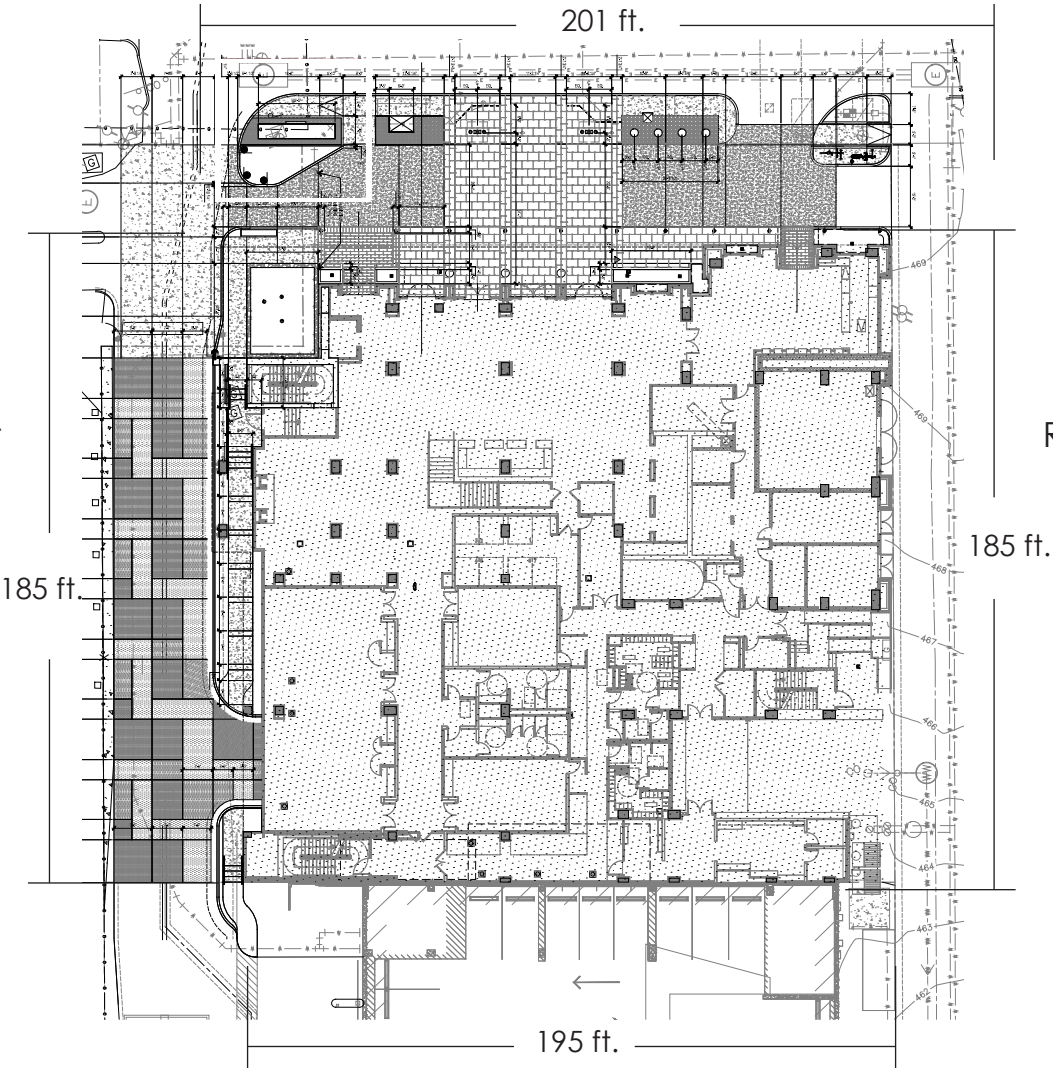
TOTAL LOT SQ FT ALLOWED: 2298 sqft
TOTAL LOT SQ FT REQUESTED: 2259.9 sqft

NORTH FACE
Allowed 603 sqft
Requested: 2,037.5 sqft

WEST FACE
Allowed: 555 sqft
Requested: 53.4 sqft

EAST FACE
Allowed: 555 sqft
Requested: 169 sqft

SOUTH FACE
Allowed: 585 sqft
Requested: 0 sqft



ION ART

407 Radam Lane, Suite A100
Austin TX 78745
Mail: ionart@ionart.com
Phone: 512-326-9333
www.ionart.com

HOTEL
VAN ZANDT
A KIMPTON HOTEL

Location 605 Davis St.
Austin, TX 12345

Designer CFM

Date

Electrical Notes
Ion Art DOES NOT provide primary electrical to sign. Power to the sign must be done by a licensed electrical contractor or licensed electrician.

Each sign must have:
1. Min. of 1 dedicated 120V 20A circuit
2. J-box installed within 4ft. of sign
3. 3 wires: line, ground, neutral

SIGN AREA

BLOG. HEIGHT

LINEAR FEET

COLORS & MATERIALS

<input type="checkbox"/>	
<input type="checkbox"/>	
<input type="checkbox"/>	
<input type="checkbox"/>	
<input type="checkbox"/>	
<input type="checkbox"/>	

© 2014 ION ART, INC.
All rights reserved. The intellectual property, concepts, and designs contained in this document are the exclusive property of Ion Art, Inc.
Neither the document nor the information it contains may be copied, disclosed to others, or used in connection with any work or project other than the specific project for which it has been prepared and developed, without the written consent of Ion Art, Inc.

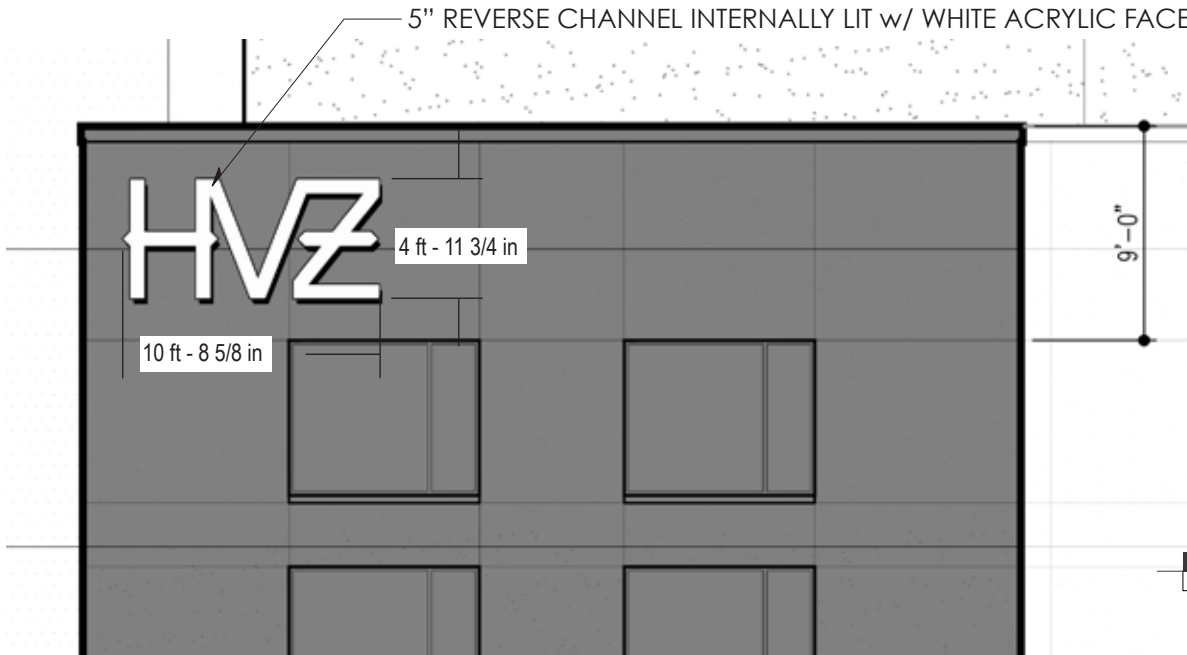
ARTICLE 7. REGULATIONS APPLICABLE TO CERTAIN SIGN DISTRICTS

§ 25-10-129 DOWNTOWN SIGN DISTRICT REGULATIONS.

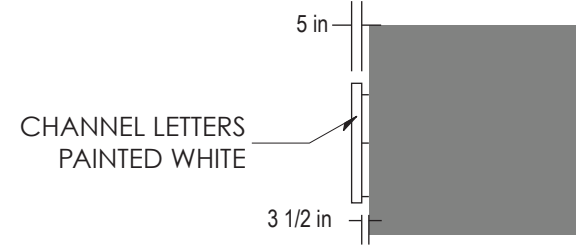
- (A) This section applies to a downtown sign district.
- (B) One freestanding sign is permitted on a lot. Additional freestanding signs may be permitted under Section 25-10-131 (Additional Freestanding Signs Permitted).
- (C) Wall signs are permitted.
- (D) A wall sign may be a projecting sign if the sign complies with this subsection.
 - (1) One projecting sign for each building facade is permitted.
 - (2) The sign area of a projecting sign may not exceed 35 square feet.
 - (3) A sign may extend from the building facade not more than the lesser of:
 - (a) six feet; or
 - (b) a distance equal to two-thirds the width of the abutting sidewalk.
 - (4) For a sign that projects over state right-of-way, the state must approve the sign.
- (E) One commercial flag for each curb cut is permitted. A commercial flag may be suspended over public right-of-way.
- (F) This subsection prescribes the maximum sign area.
 - (1) For signs other than freestanding signs, the total sign area for a lot may not exceed 20 percent of the facade area of the first 15 feet of the building.
 - (2) For a freestanding sign, the sign area may not exceed the lesser of
 - (a) 0.5 square feet for each linear foot of street frontage; or
 - (b) 200 square feet.
- (G) The sign height may not exceed:
 - (1) for a freestanding sign, six feet; or
 - (2) for a commercial flag, 30 feet.

Source: Sections 13-2-867 and 13-2-869; Ord. 990225-70; Ord. 031211-11.

HOTEL VAN ZANDT 2458 Sign D & E



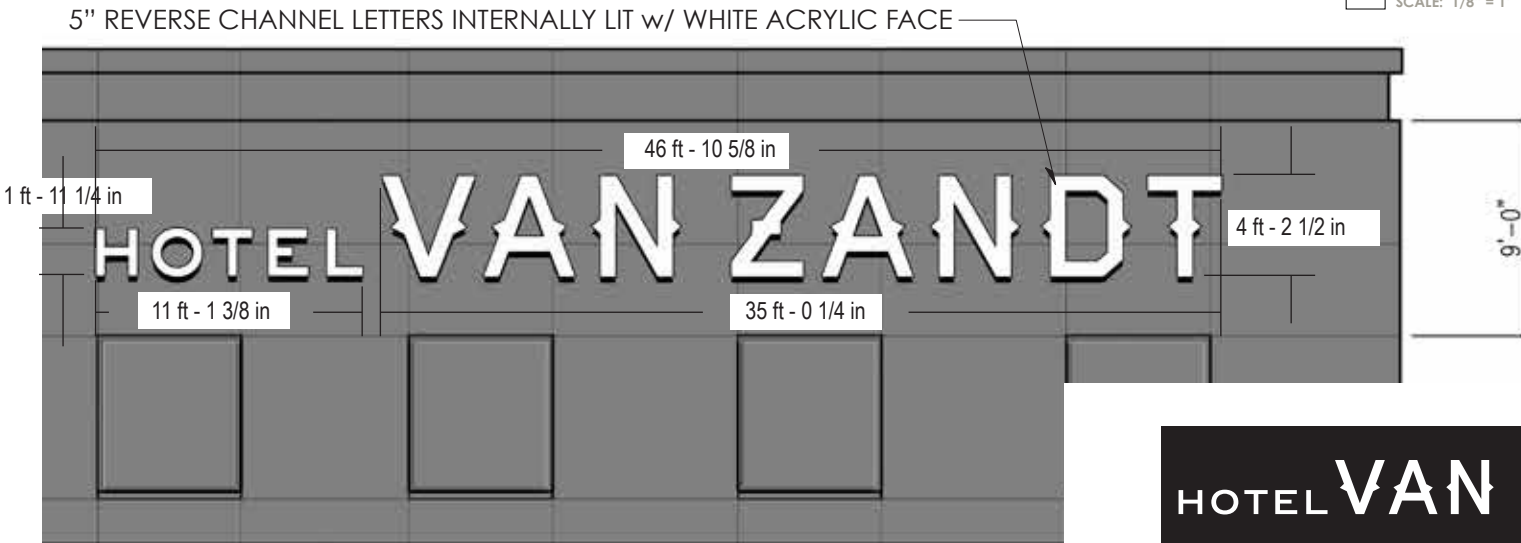
D WEST ELEVATION CHANNEL LETTERS FACE VIEW
SCALE: 1/8" = 1'



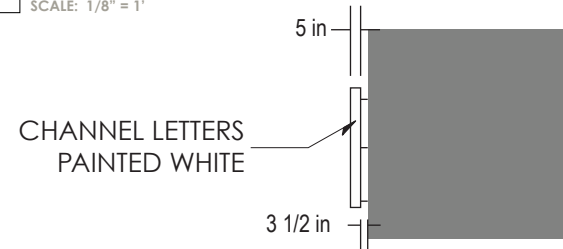
D SIDE VIEW | ATTACHMENT
SCALE: 1/8" = 1'



D LIGHTING EXHIBIT
SCALE: 1/8" = 1'



E WEST ELEVATION CHANNEL LETTERS FACE VIEW
SCALE: 1/8" = 1'



E SIDE VIEW | ATTACHMENT
SCALE: 1/8" = 1'



E LIGHTING EXHIBIT
SCALE: 1/8" = 1'

ION ART

407 Radam Lane, Suite A100
Austin TX 78745
Mail: ionart@ionart.com
Phone: 512-326-9333
www.ionart.com

HOTEL
VAN ZANDT
A KIMPTON HOTEL

Location 605 Davis St.
Austin, TX 78701

Designer CFM
Date 07.14.14

Electrical Notes
Ion Art DOES NOT provide primary electrical to sign. Power to the sign must be done by a licensed electrical contractor or licensed electrician.

Each sign must have:
1. Min. of 1 dedicated 120V 20A circuit
2. J-box installed within 6ft. of sign
3. 3 wires: line, ground, neutral

SIGN AREA 53.4 sqft

BLDG. HEIGHT 15 ft

LINEAR FEET 155 ft

COLORS & MATERIALS

☐ Aluminum Painted White

☐ White Acrylic

☐

☐

☐

☐

☐

☐

SIGN AREA 169 sqft

BLDG. HEIGHT 15 ft

LINEAR FEET 185 ft

© 2014 ION ART, INC.

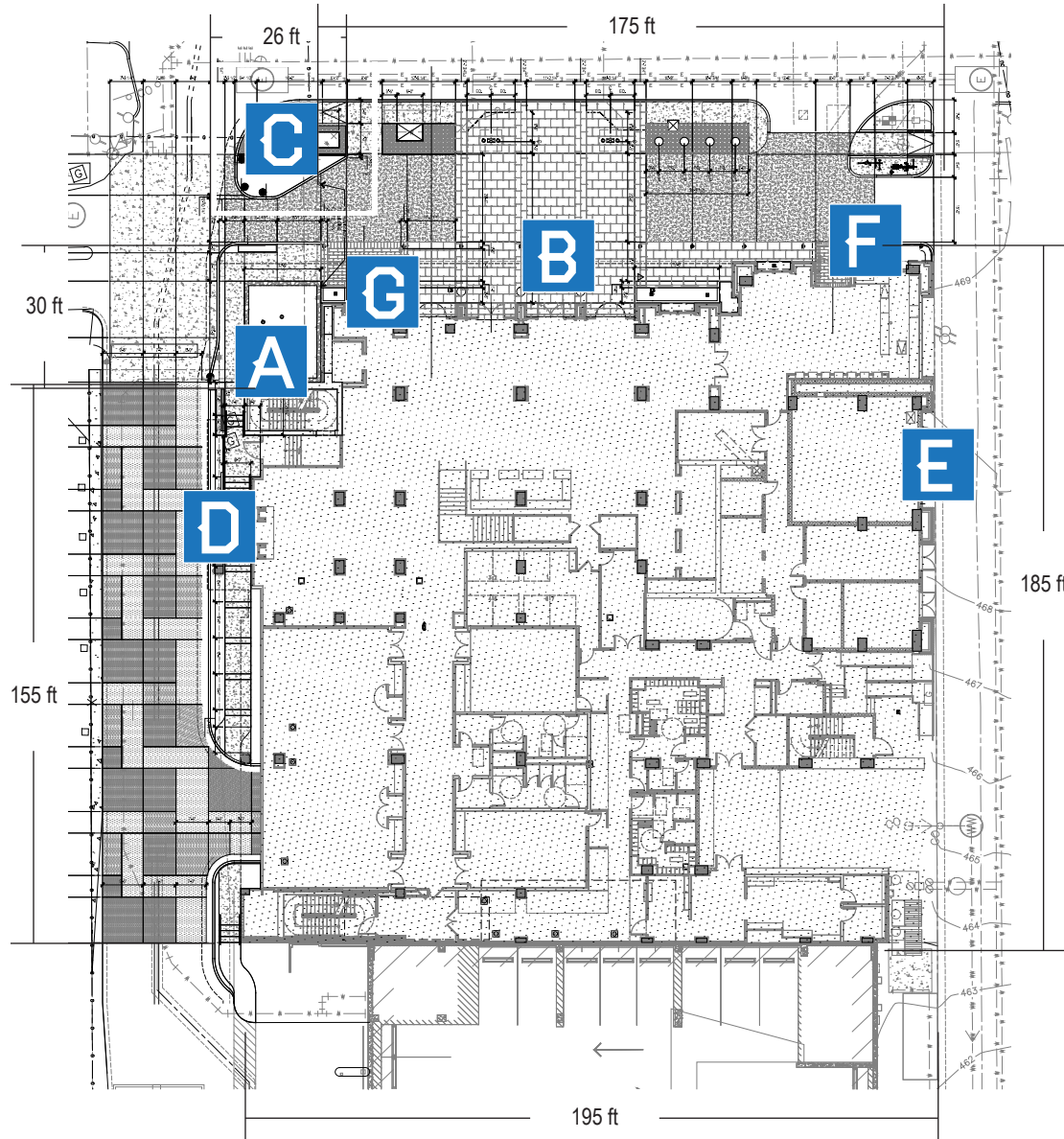
All rights reserved. The intellectual property, concepts, and designs contained in this document are the exclusive property of Ion Art, Inc.

Neither the document nor the information it contains may be copied, disclosed to others, or used in connection with any work or project other than the specific project for which it has been prepared and developed, without the written consent of Ion Art, Inc.

P3

HOTEL VAN ZANDT 2458 Sign Locations

SITE PLAN SIGN LOCATIONS
SCALE: NTS



PROPOSED SIGN LOCATIONS

A	FIN SIGN	1980 sqft
B	AWNING SIGN	21.5 sqft
C	MONUMENT	7.6 sqft
D	WEST SIGN	53.4 sqft
E	EAST SIGN	169 sqft
F	BLADE SIGN	8 sqft
G	RESTAURANT SIGN	28sqft

TOTAL 2267.5 sqft

ION ART

407 Radam Lane, Suite A100
Austin TX 78745
Mail: ionart@ionart.com
Phone: 512-326-9333
www.ionart.com

**HOTEL
VAN ZANDT**
A KIMPTON HOTEL

Location 605 Davis St.
Austin, TX 78701

Designer CFM

Date 07.14.14

Electrical Notes

Ion Art DOES NOT provide primary electrical to sign. Power to the sign must be done by a licensed electrical contractor or licensed electrician.

Each sign must have:

1. Min. of 1 dedicated 120V 20A circuit
2. J-box installed within 6ft. of sign
3. 3 wires: line, ground, neutral

SIGN AREA

BLDG. HEIGHT

LINEAR FEET

COLORS & MATERIALS

© 2014 ION ART, INC.

All rights reserved. The intellectual property, concepts, and designs contained in this document are the exclusive property of Ion Art, Inc.

Neither the document nor the information it contains may be copied, disclosed to others, or used in connection with any work or project other than the specific project for which it has been prepared and developed, without the written consent of Ion Art, Inc.

P6