



THE NEIGHBORHOOD PARTNERING PROGRAM:
EMPOWERING NEIGHBORHOODS, BUILDING COMMUNITY

Bond Oversight Committee Program Overview

Justin Golbabai
Neighborhood Partnering Program Manager
Public Works Department
City of Austin, Texas

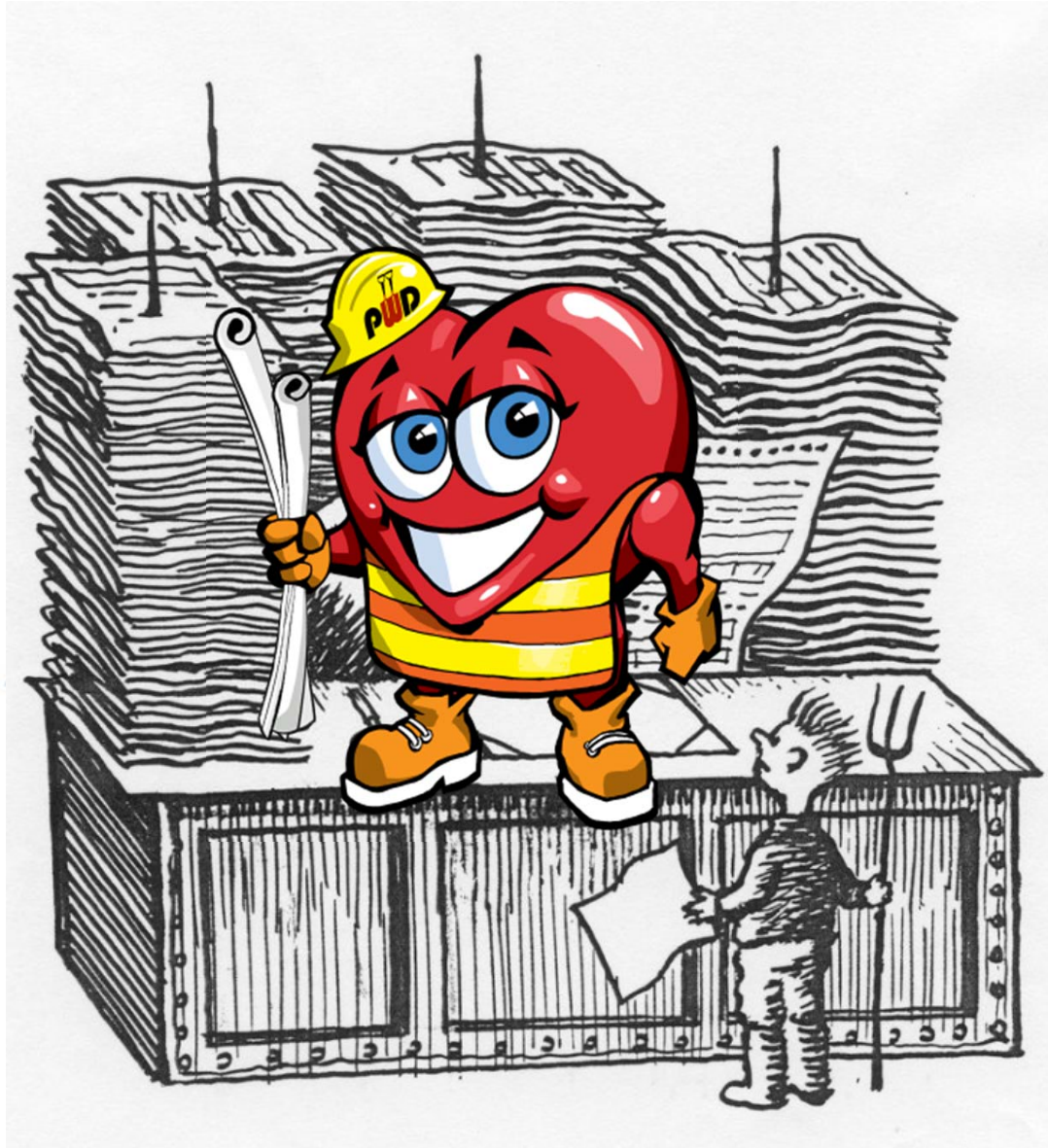


Neighborhood Partnering Program

What Makes Austin Great?



Neighborhood Partnering Program



Neighborhood Partnering Program

WIKIPEDIA

English

The Free Encyclopedia

4 588 000+ articles

Español

La enciclopedia libre

1 119 000+ artículos

日本語

フリー百科事典

922 000+ 記事

Deutsch

Die freie Enzyklopädie

1 749 000+ Artikel

Italiano

L'enciclopedia libera

1 137 000+ voci

Polski

Wolna encyklopedia

1 059 000+ haseł

Русский

Свободная энциклопедия

1 138 000+ статей

Français

L'encyclopédie libre

1 535 000+ articles

中文

自由的百科全書

782 000+ 條目

Português

A enciclopédia livre

835 000+ artigos





THE NEIGHBORHOOD PARTNERING PROGRAM:
EMPOWERING NEIGHBORHOODS, BUILDING COMMUNITY

Purpose:

Providing opportunities for community and neighborhood organizations to affect public improvements by sharing in the costs of those efforts with the City of Austin government.

Criteria

- **Proposed Project is on City property or appropriate easements**
- **Project is submitted by a community group**
- **60% of impacted stakeholders must approve of the project.**
- **Community Group maintains the project for the life of the project.**

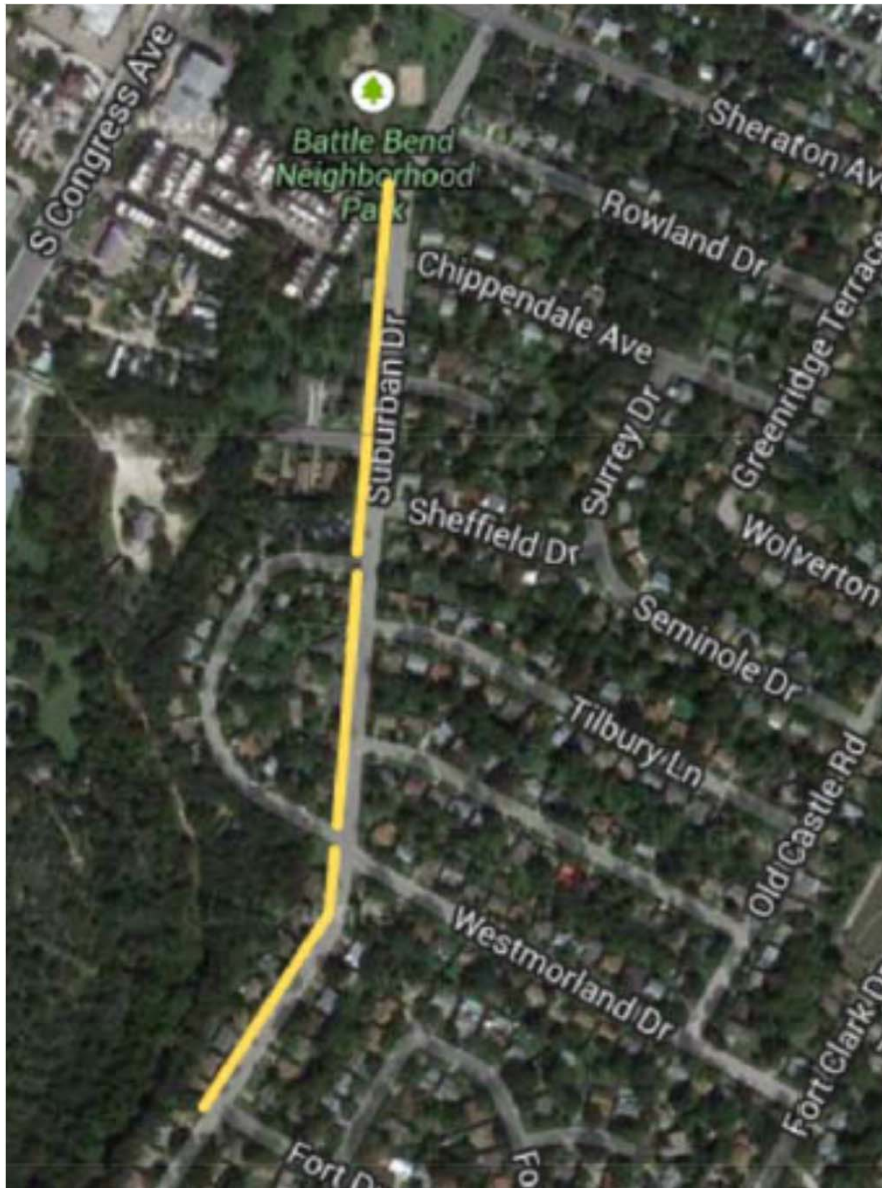


Neighborhood Cost Share Program:

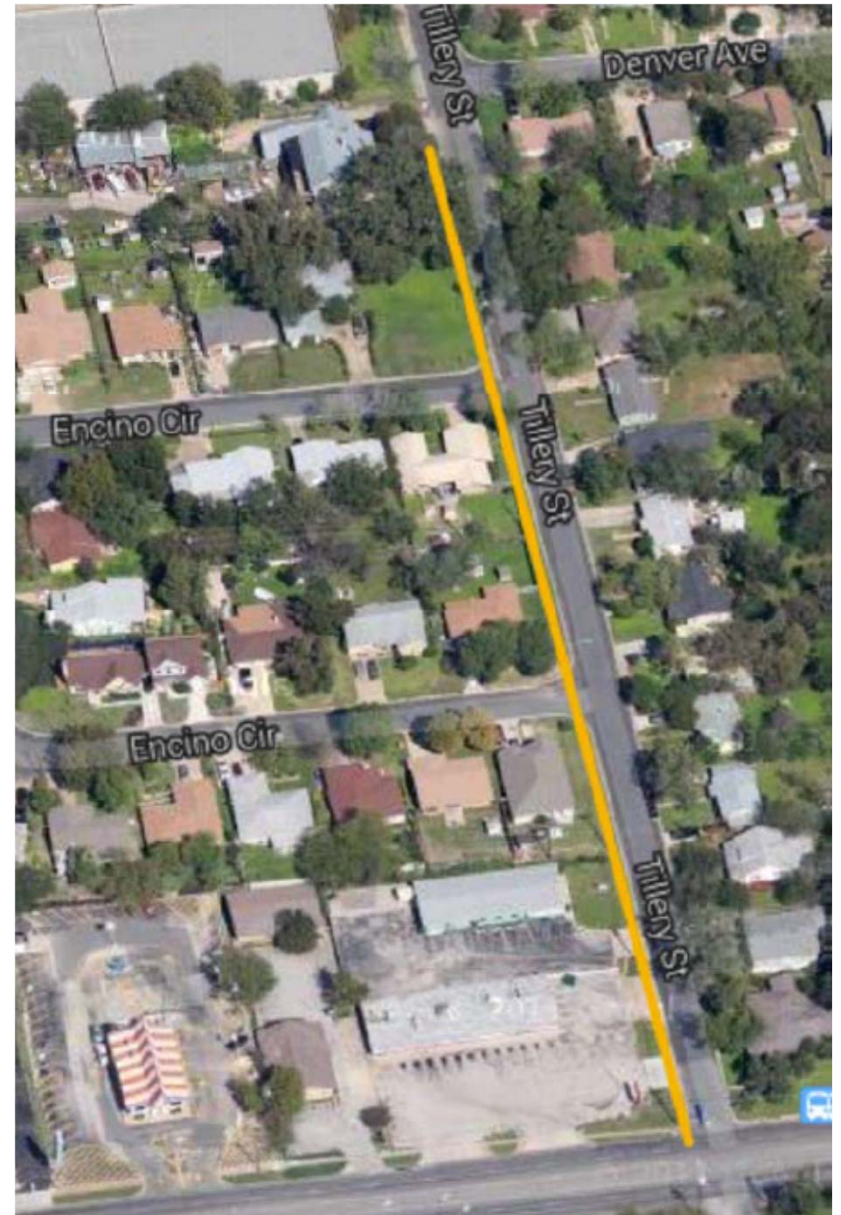
- Limited/Small Projects > 40% of total project cost
- Medium Projects > 25% of total project cost
- Large Projects > 50% of total project cost



Suburban Drive Sidewalk



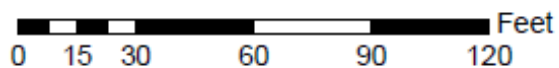
Tillery Street Sidewalk



Cherry Creek Community Garden



Note: Illustration of community garden may not be to scale



This product is for informational purposes and may not have been prepared for or be suitable for legal, engineering, or surveying purposes. It does not represent an on-the-ground survey and represents only the approximate relative location of property boundaries.

This product has been produced by the Watershed Protection Department for the sole purpose of geographic reference. No warranty is made by the City of Austin regarding specific accuracy or completeness.

Legend

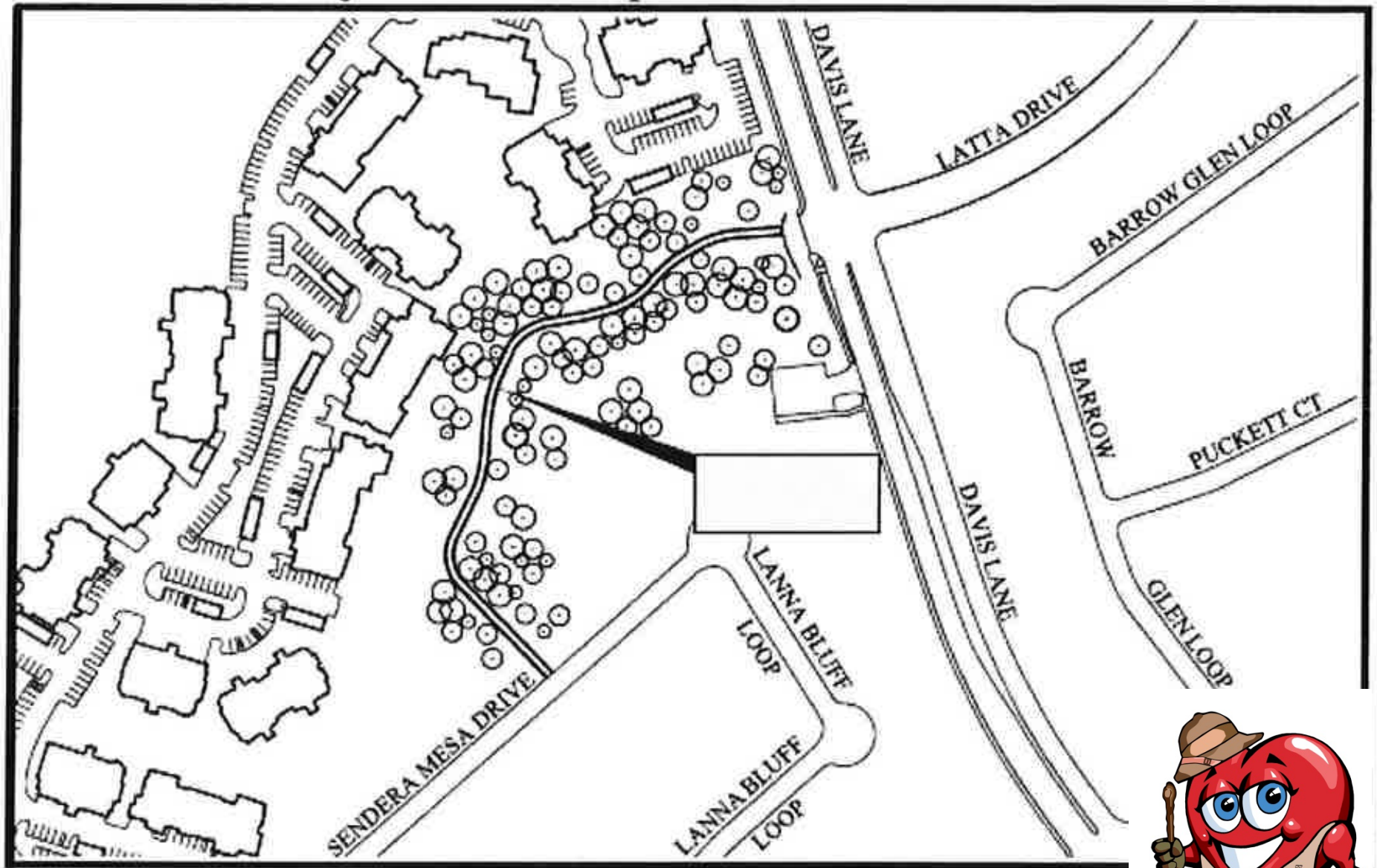


Williamson 25 yr floodplain

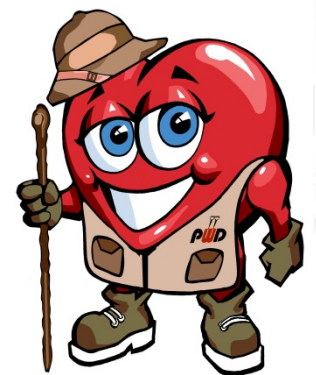
Prepared: 5/14/12

Project

Map



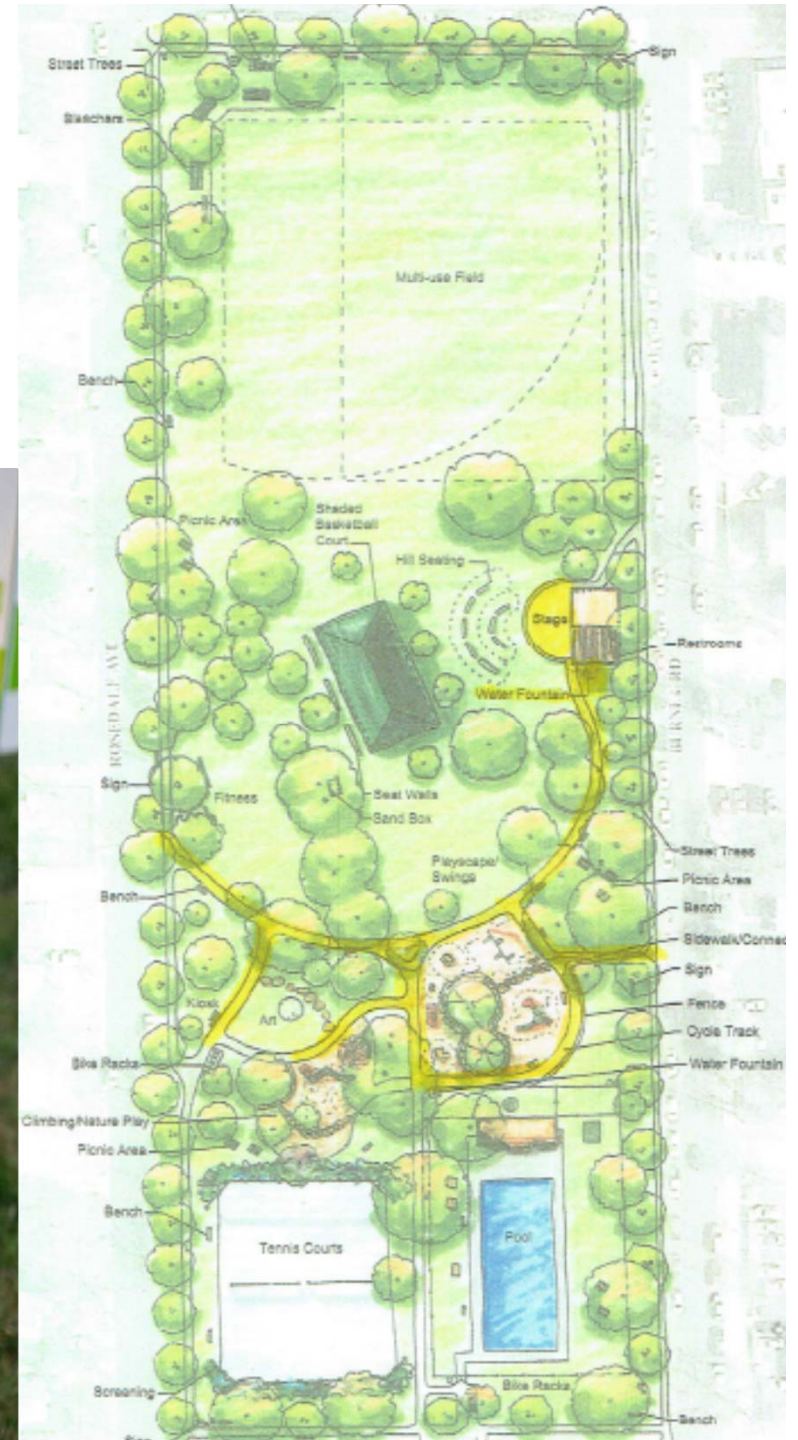
Davis Lane Trail Segment



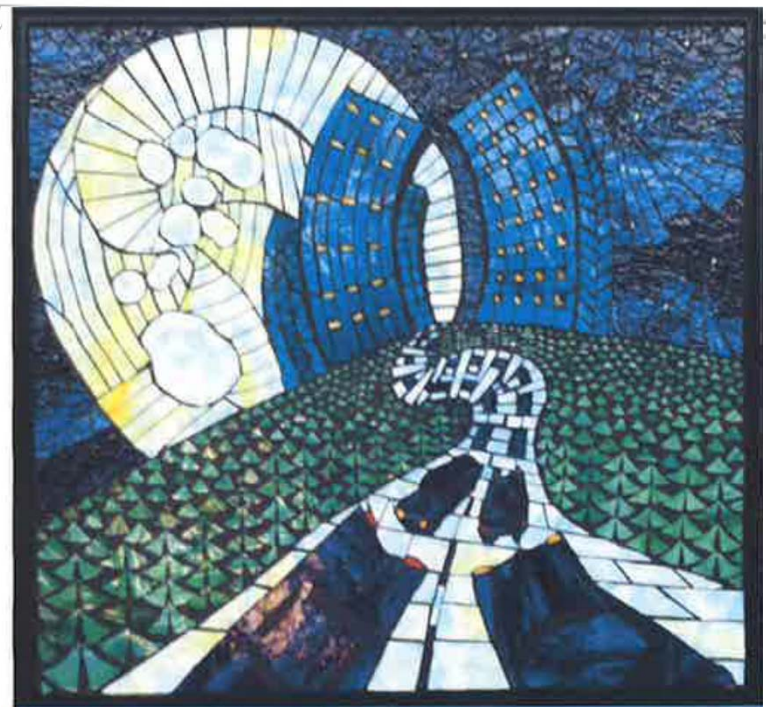
Arroyo Seco Project



Ramsey Park Pathways and Stage



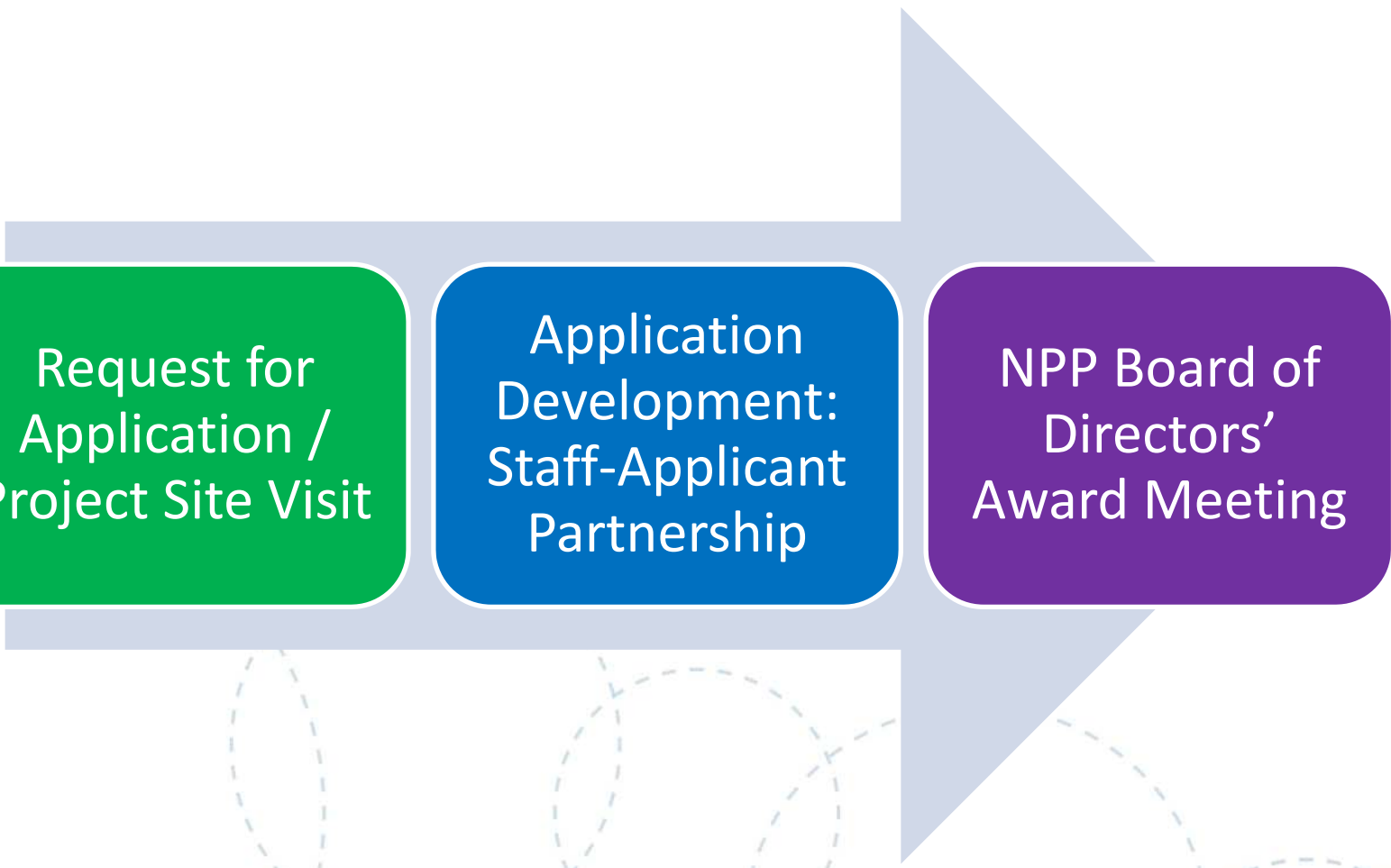
Barton Hills Mosaic



Ridgelea Greenspace and Beautification Project



Application Process



Request for
Application /
Project Site Visit

Application
Development:
Staff-Applicant
Partnership

NPP Board of
Directors'
Award Meeting

Neighborhood Partnering Program



THE NEIGHBORHOOD PARTNERING PROGRAM:
EMPOWERING NEIGHBORHOODS, BUILDING COMMUNITY

Core Values

- Community Participation
- Cost Sharing
- Quality of Life Enhancement
- Incorporation of City Initiatives
- Geographic Equity



Projects Since the 2012 Bond

	2012 Bond Funded Projects	Other Funding Sources Projects
Number of Projects	9	4
Community Contribution	\$211k	\$188k
City Contribution	\$472k	\$224k
Total Value	\$683k	\$412k

Neighborhood Partnering Program

Our Partnerships



**AUSTIN
PARKS
FOUNDATION**



SUSTAINABLE FOOD CENTER

THE UNIVERSITY OF TEXAS AT AUSTIN

LONGHORN CENTER

for Civic Engagement



THE NEIGHBORHOOD PARTNERING PROGRAM:

EMPOWERING NEIGHBORHOODS,
BUILDING COMMUNITY

Questions?

[http://www.austintexas.gov/
neighborhoodpartnering](http://www.austintexas.gov/neighborhoodpartnering)

Justin Golbabai
Neighborhood Partnering Program Manager
Public Works Department
City of Austin, Texas
Justin.Golbabai@austintexas.gov
(512) 974-6439



CONNECTING YOU ALL AROUND
AUSTIN
PUBLIC WORKS DEPARTMENT