

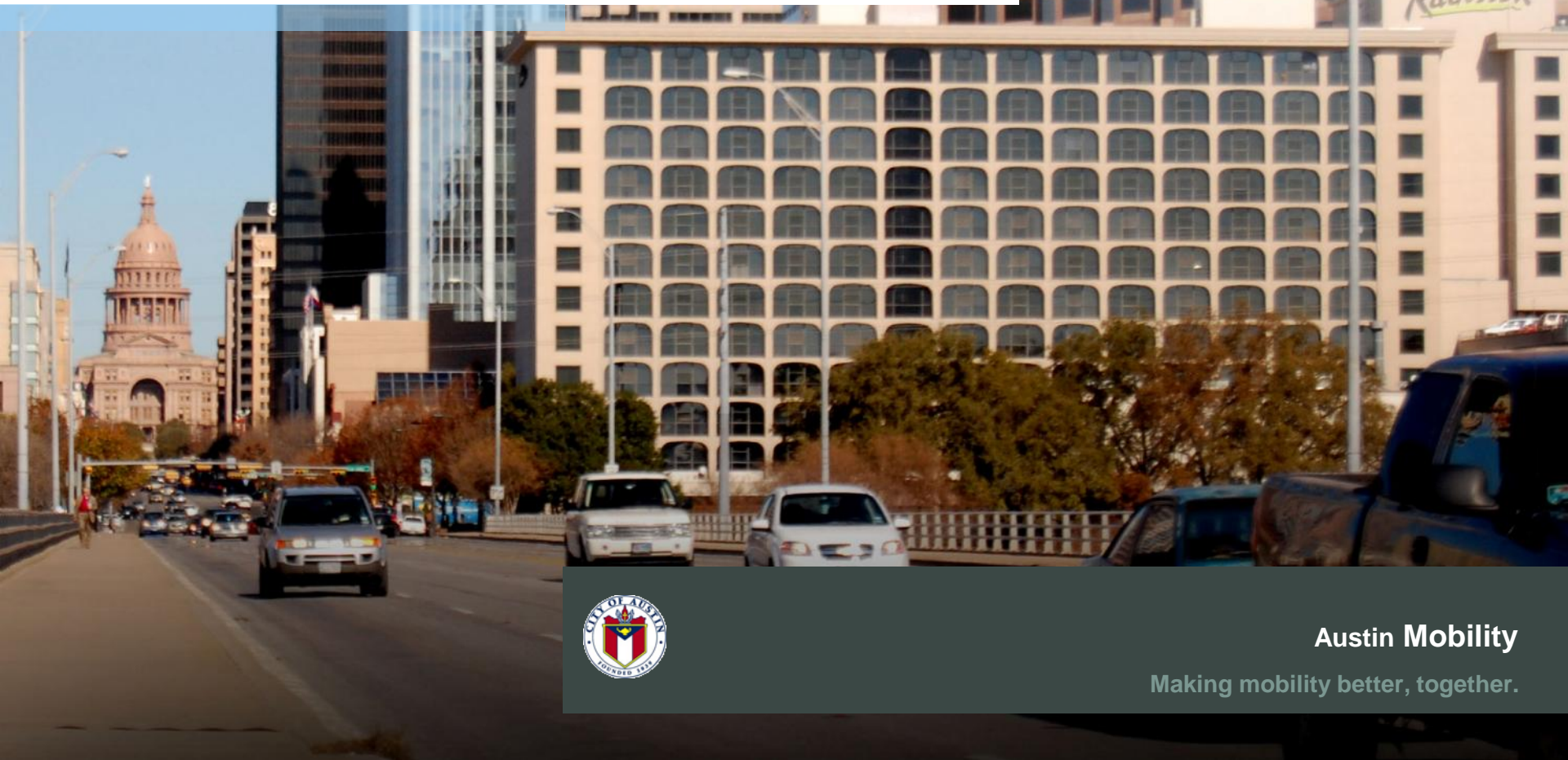


MUELLER PILOT

PARKING AND TRANSPORTATION MANAGEMENT DISTRICT

11.13.14

CREATED FOR THE RMMA PLAN IMPLEMENTATION ADVISORY COMMISSION



Austin Mobility

Making mobility better, together.

COA PARKING TOOLS BACKGROUND

Existing Ordinances

- Parking Benefits District (PBD)
- Residential Parking Permit (RPP)

Need

- Comprehensive tool - mixed-use commercial areas
- Council Resolution – May 22, 2014
 - Passed on Consent Agenda
 - Council Agenda – December 11, 2014



Council Resolution directed the City Manager to build on the work already started at Mueller and continue to work with area stakeholders to create a Parking and Transportation Management District for Mueller

PTMD DEFINITION

PARKING AND TRANSPORTATION MANAGEMENT DISTRICT

A PTMD is a defined geographic area that may include a mix of retail, entertainment, commercial, medical, educational, civic and residential uses.

- Minimum 100 new on-street or 200 paid public off-street spaces

A percentage of funds from paid public parking within the district is used for projects that confer public benefits within the district.

- 51% of the net proceeds goes to the PTMD district



POTENTIAL PTMD REVENUE PROJECTS

Eligible improvements might include:

- Park Maintenance and Improvements
- Signage and wayfinding
- Public Right of Way Sidewalk, Landscaping, Street Furniture, Lighting improvements
- Increased District Maintenance
- Public Art



Mueller Lake Park



Credit: Tampa's Parking Dept.



COA Great Streets



Credit: COA AIPP

Parking

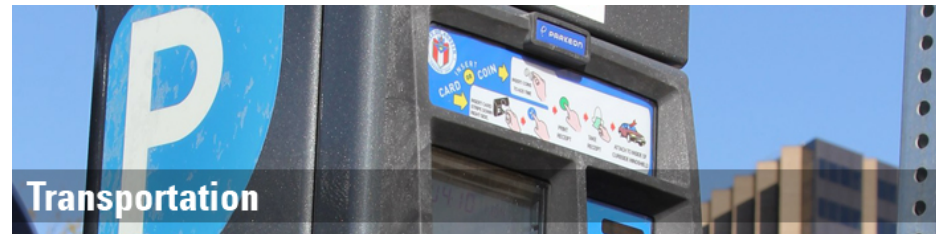
- Paid parking with revenue profit-sharing for district improvements
- Residential Parking Permits
- Coordination of shared parking (office & retail)
- Management for safety and visibility (e.g. Designating No Parking spaces)

Monitoring/Enforcement

- ATD and/or APD

Designation of On-Street Zones

- Paid or short-term parking
- Customer / Commercial Service
- Valet
- Car sharing
- Ground Transportation (taxi, bus, pedicab)
- Bus loading/unloading





MUELLER PTMD APPLICATION



AUSTIN MOBILITY Making mobility better, together.

11.13.2014 / PRESENTED RMMA PIAC



MUELLER PTMD: BOUNDARY



MUELLER PTMD: REQUIREMENTS

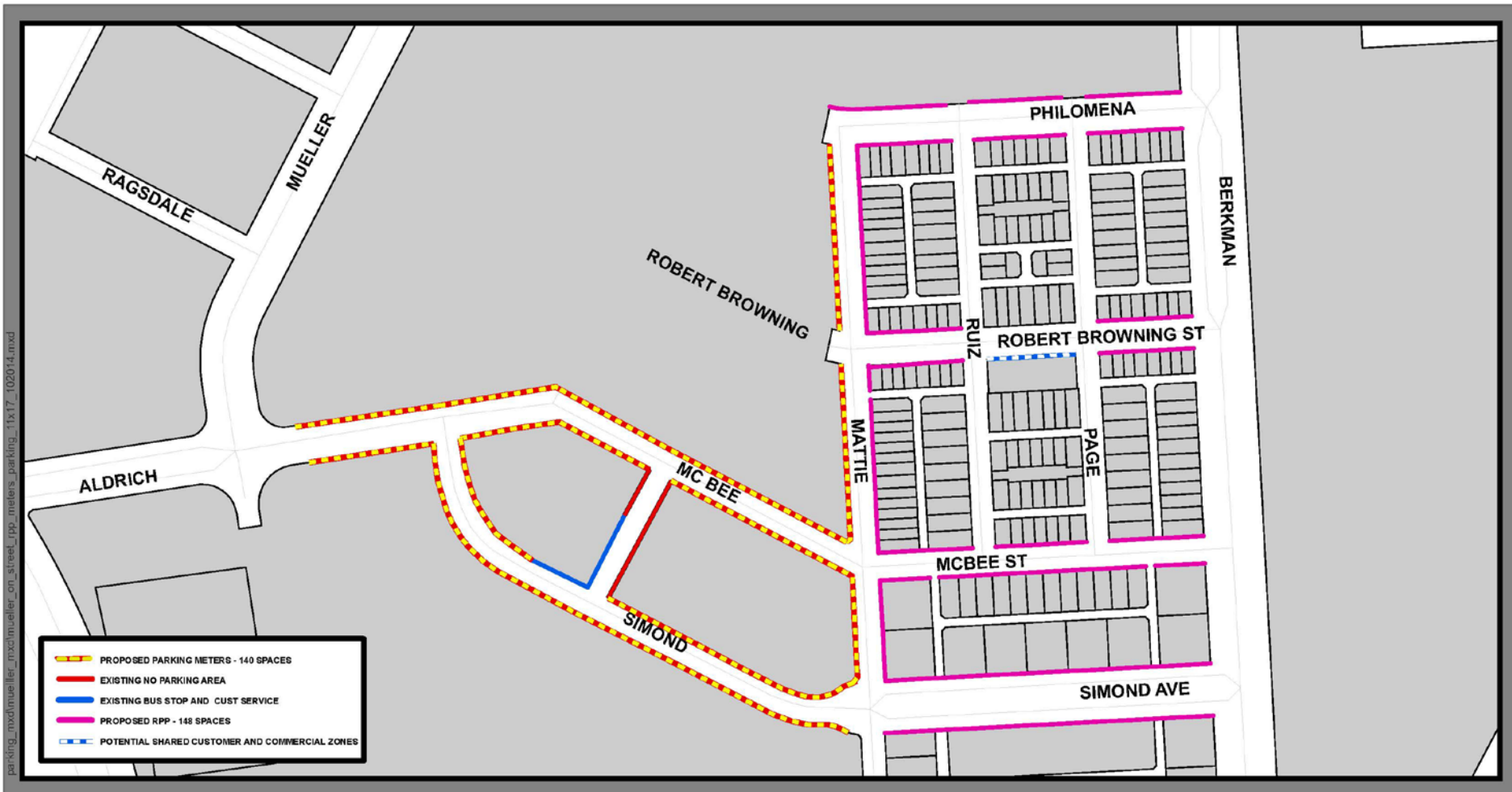
Requirements

- = / > 100 new on-street or 200 paid public off-street spaces
- Map showing boundaries of District
- List/Map showing Proposed On- and Off-Street Paid Public Parking
- Parking Proforma
- Proposed Tools
- Proposed Improvement Projects
- Oversight Committee
- Stakeholder Outreach meetings
- Letters of Recommendation

Requirements Met

- ✓ 140 on-street spaces
- ✓ Map Provided
- ✓ Map Provided
- ✓ Compiled by Staff
- ✓ List provided of existing and new
- ✓ List identified
- ✓ Organizations and Contacts identified
- ✓ Process detailed in application
- ✓ In process

MUELLER PTMD: INITIAL IMPLEMENTATION



Initial Areas Recommended for Residential Permit Parking (RPP) and Paid On-Street Parking



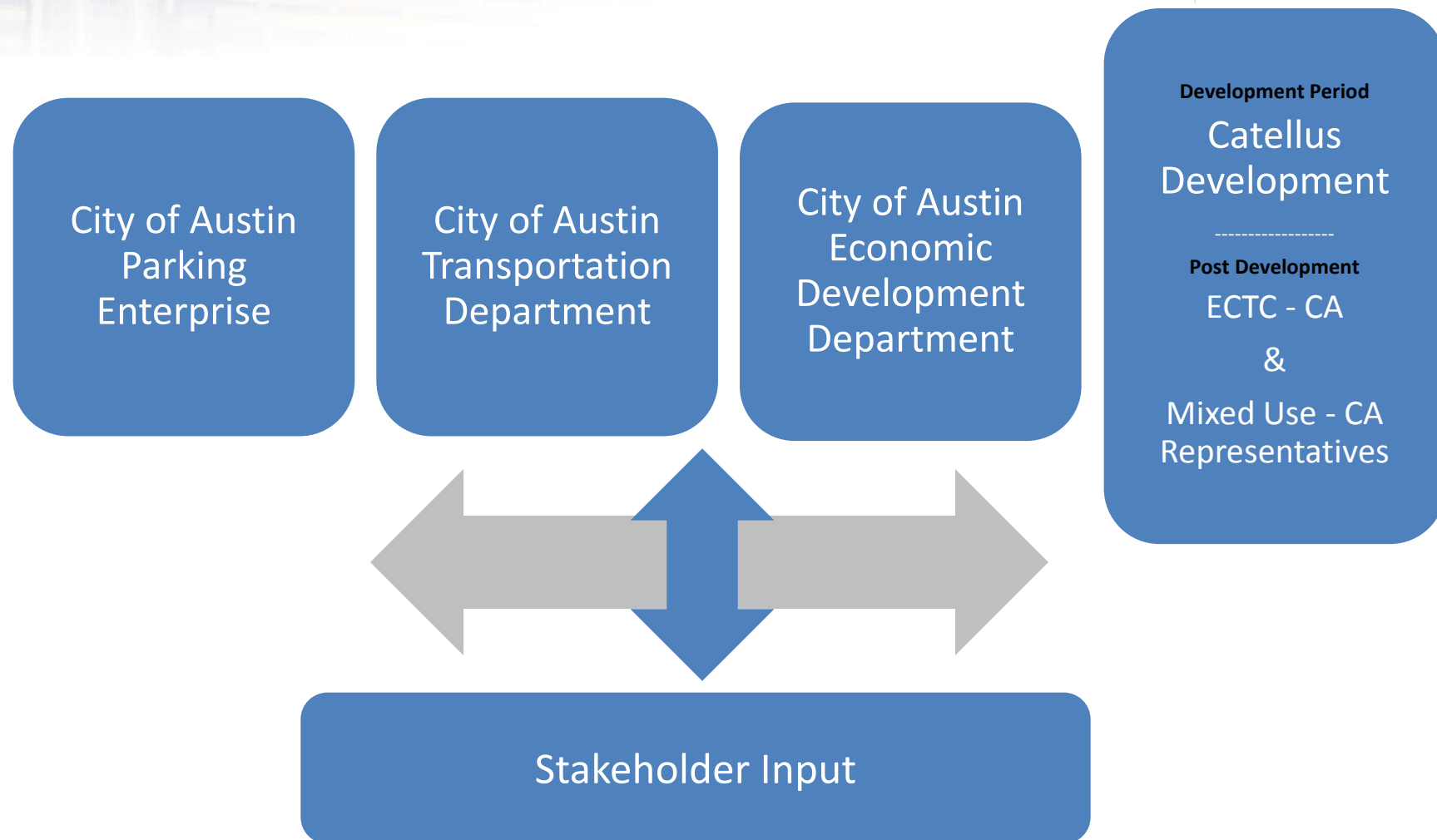
MUELLER PTMD: PARKING PROFORMA

Parking Proforma Compiled by Staff

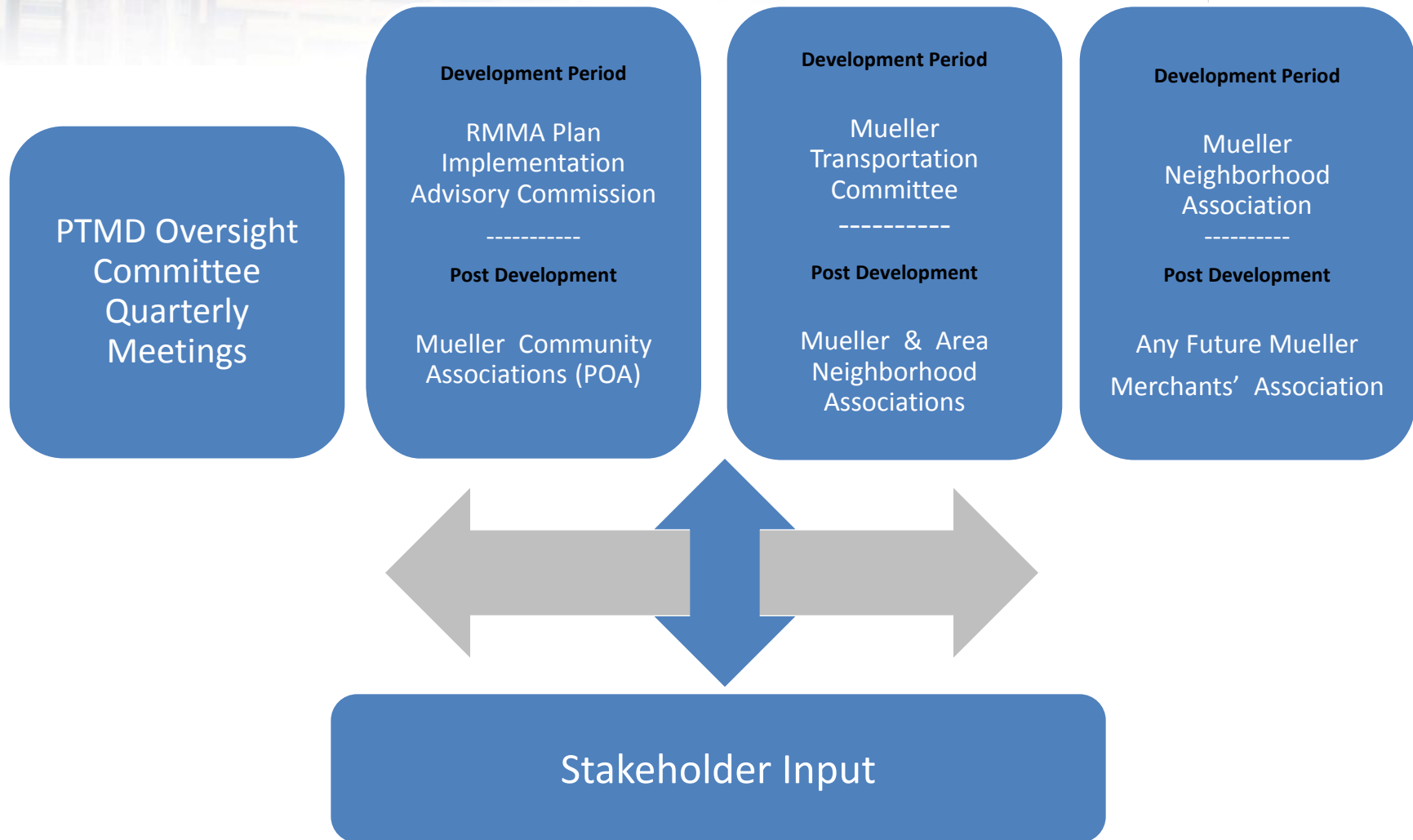
Mueller Revenue and Expenses Estimate PTMD Proforma 2014-2015	
Total Projected Meter Revenue	\$150,920
Estimated City Expenses	\$85,607
Net Profit	\$65,313
Mueller PTMD @ 51%	\$33,310
COA @ 49%	\$32,003



MUELLER PTMD: OVERSIGHT COMMITTEE



MUELLER PTMD: FEEDBACK PROCESS





MUELLER PTMD IMPLEMENTATION

Next Steps:

- UTC: November 13, 2014
- City Council: December 11, 2014
- RPP implementation: Projected Q1 2015
- Parking Meter Installation: Projected Q2 2015

Email Parking Questions or Concerns:

parking@austintexas.gov

Put “Mueller” in the subject line