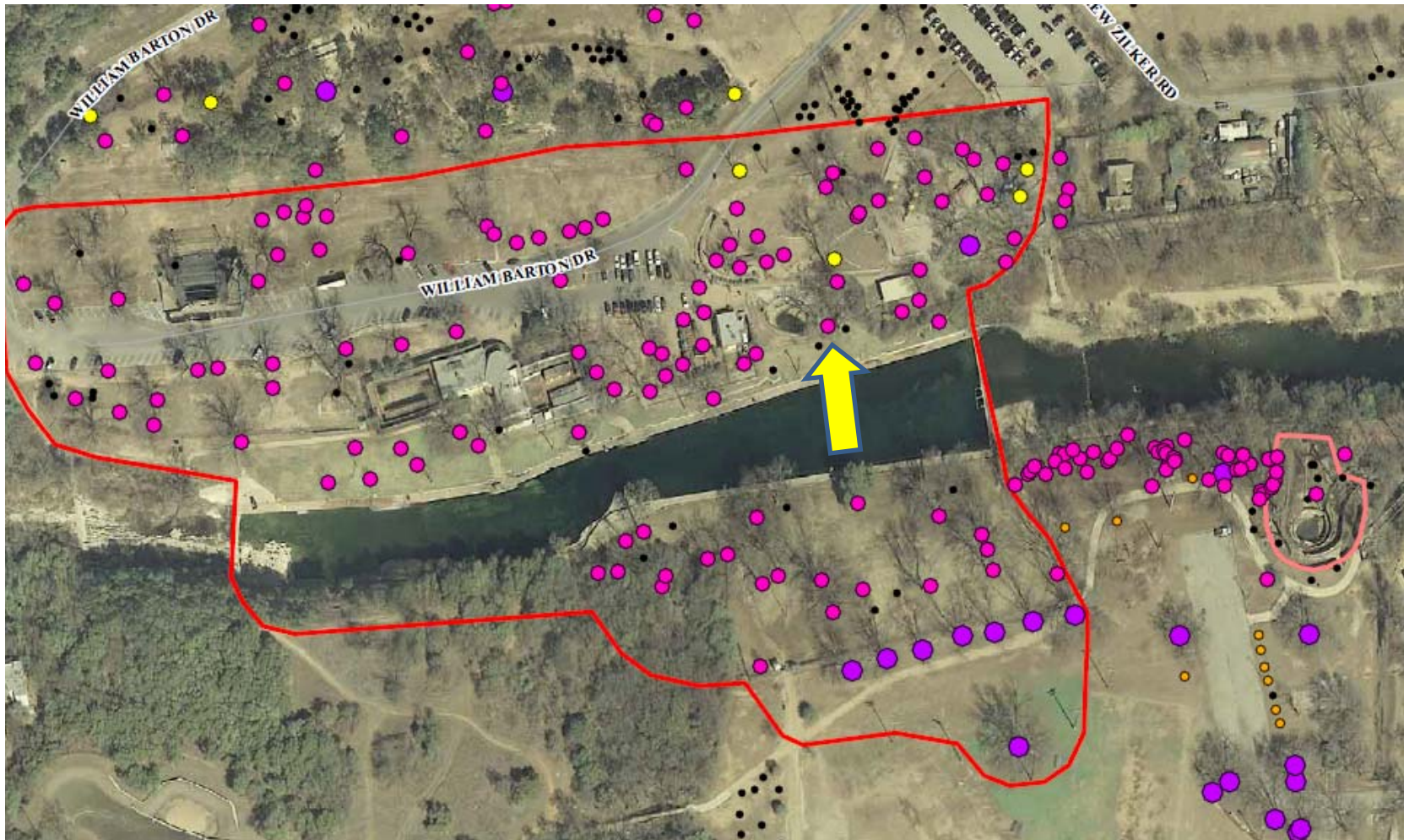


# Cottonwood Tree Removal at Barton Springs Pool



**Legend**

- All Other Trees
- Mature Trees
- Prune
- Removed
- Young Trees

*Joint Committee Notification Ar*

- Barton Springs Area
- Old Mill Springs Area







## Cottonwood, *Populus deltoides*



**Risk Rating:** 8

**Size:** 48" DBH, 45-60' Height

**Age Class:** Over-mature

**Crown Class:** Co-dominant

**Notes:** codom at 30 ft near drainage large shallow roots beyond drip

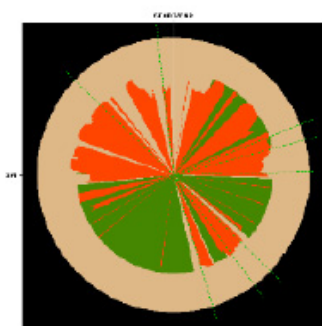
**Site Summary:** cement drainage and turf

**Maintenance Recommendation:** Prune – Crown Clean, possible removal.

**Root Summary:** good ratio near trunk, fair@dripline, bigger roots near dripline

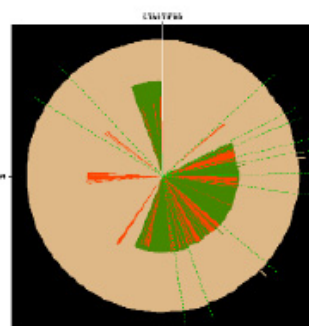
**Soil/Foliage Summary:** sandy & clay; minor dieback in crown

**Radar Summary:** Lowest percent average solid wood: 49% at 1 foot, overall average Mattheck score: 0.638



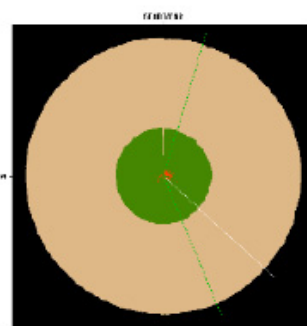
8) 10/12/2025) 10/12/2025

1 Foot Elevation



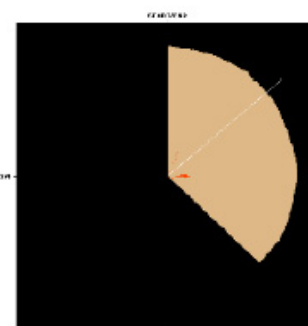
8) 10/12/2025) 10/12/2025

3 Foot Elevation



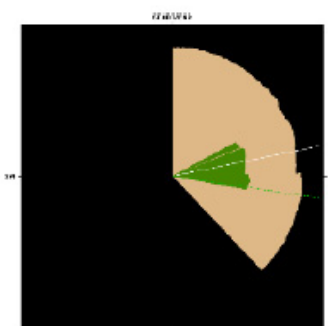
8) 10/12/2025) 10/12/2025

DBH Elevation



8) 10/12/2025) 10/12/2025

Aerial, Left Scaffold



8) 10/12/2025) 10/12/2025

Aerial, Rt Scaffold

# Risk Assessments

- 2009: Prune/crown clean, possible removal (Davey Resource Group), No specific assessment by Don Gardner in 2009
- 2012: Forestry staff assessment - High Risk
- 2014: Forestry staff assessment - High Risk

# Cottonwood Basic Info

- Tree scheduled for removal in 2015 as part of Eliza Springs project
- This is a declining over-mature tree whose condition has deteriorated rapidly over the last 5 years
- Removal options will be limited as tree continues to deteriorate
- Removal is recommended and chosen option

# Eliza Springs Impact

- Salamander concerns due to loss of cottonwood will be mitigated by the planting of new trees
- Tree maintenance to be done in accordance with salamander protection best practices
- Trees planted in 2014 around Eliza Springs to replace cottonwood in advance of daylighting project
  - 3 sycamore
  - 3 cedar elm
  - 100 trees planted overall in Barton Springs Pool as part of Grounds Improvement Project