

# City of Austin Urban Trails Program: Year in Review and 2015 Plans

Bicycle Advisory Council  
December 16, 2014



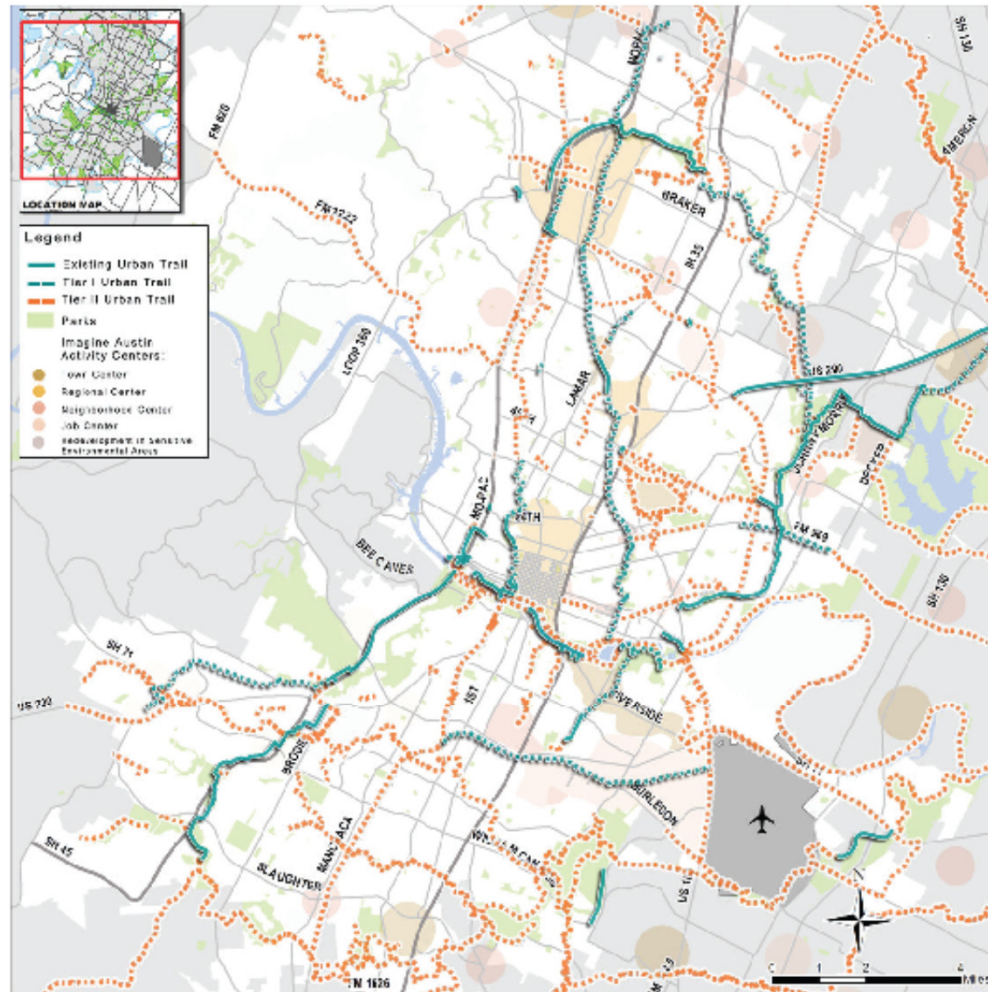
# Agenda



- **2014 Year in Review**
  - Urban Trails Master Plan
  - Southern Walnut Creek Trail
  - Austin to Manor Trail
  - Manor Expressway
- **2015 Plans**
  - Wayfinding
  - Counters
  - Trail Criteria Manual
  - Upcoming Trail Projects

# 2014 Year in Review

## AUSTIN URBAN TRAILS



Alignments shown are conceptual, and are intended to show geographic connectivity. More detailed routing, environmental evaluations and area connections will be developed for each corridor as funding is identified. Pending a more detailed analysis and adjacent, adequate bicycle/pedestrian facilities, a "no-build" option may be appropriate. A no-build option shall exist when there are environmental constraints that cannot be avoided, when an alternate route that provides an equal level of service is provided, there is a lack of neighborhood or stakeholder support, or there is a lack of available funding.

- Prioritizes implementation
- Outlines process for design and construction of new trails.
- Requires the development of a Trail Criteria Manual and other policies that will aid in implementation.



# Southern Walnut Creek Trail

- 7.3 miles
- Connects multiple destinations
- Great for all ages and abilities
- More wayfinding
- More reporting maintenance



# Austin to Manor Trail



- 2.5 miles
- Connects multiple destinations
- Great for all ages and abilities
- More wayfinding
- More reporting maintenance
- Finish Phase II



# Manor Expressway

- 6 miles
- Built by the CTRMA
- Includes future connection to SWCT & Mogan Trail
- Needs more wayfinding and trees/landscaping



# 2015 Plans



# Wayfinding



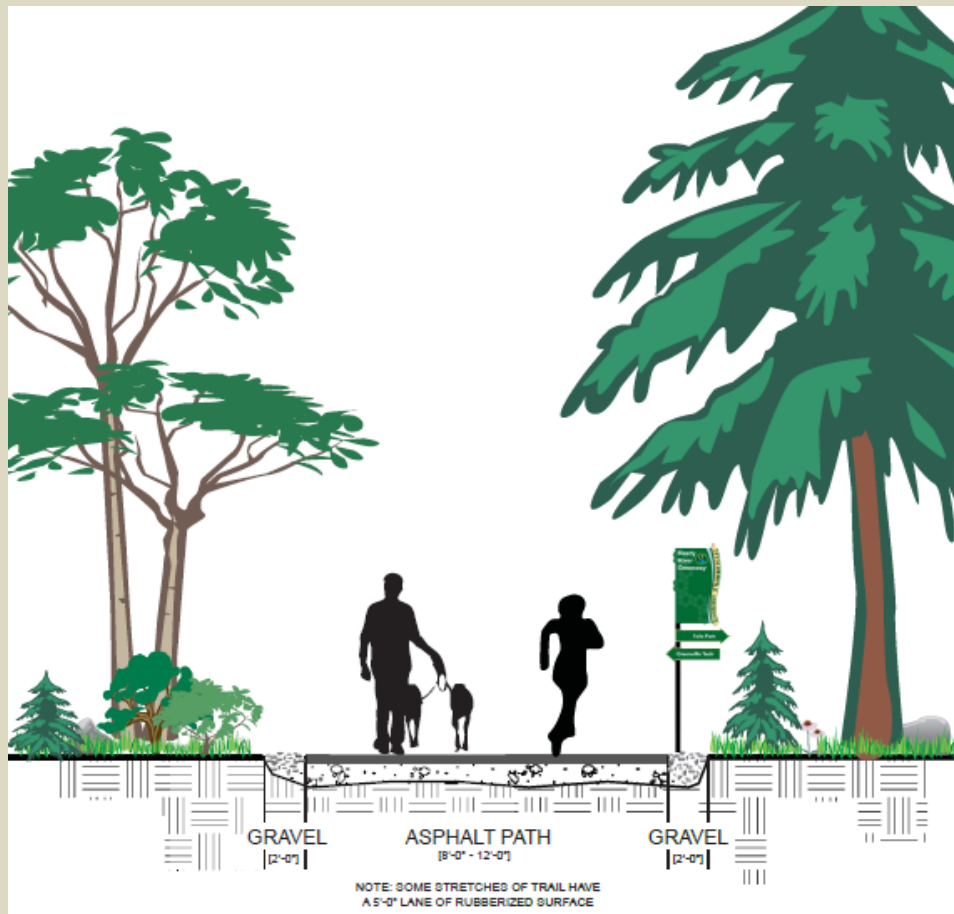
- Coordinating with Downtown Wayfinding Project to get trail signage implemented.
- Coordinating with PARD to get more trail-related wayfinding through parks.
- Establishing criteria and creating ¼ mile markers with 1<sup>st</sup> Responder info.

# Trail Counters



- Establish baseline data and track changes in patterns.
- Use data to forecast trail usage and to make the case for future connections.

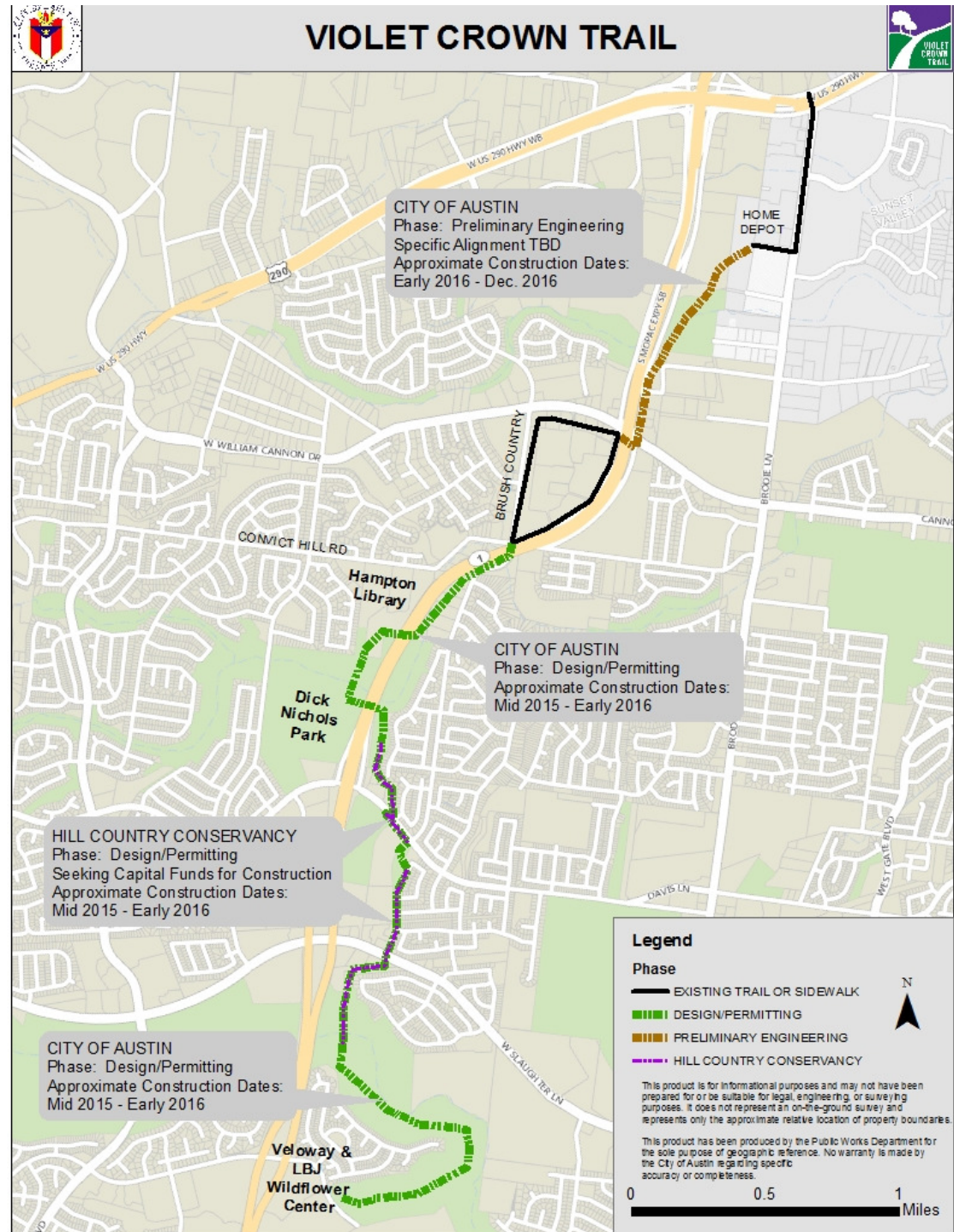
# Trail Criteria Manual & Related Policies



- Create draft manual for design and construction of all trails.
- Seek internal/external feedback, go through rule posting process.
- Create policies that encourage and incent developers to construct Urban Trails.



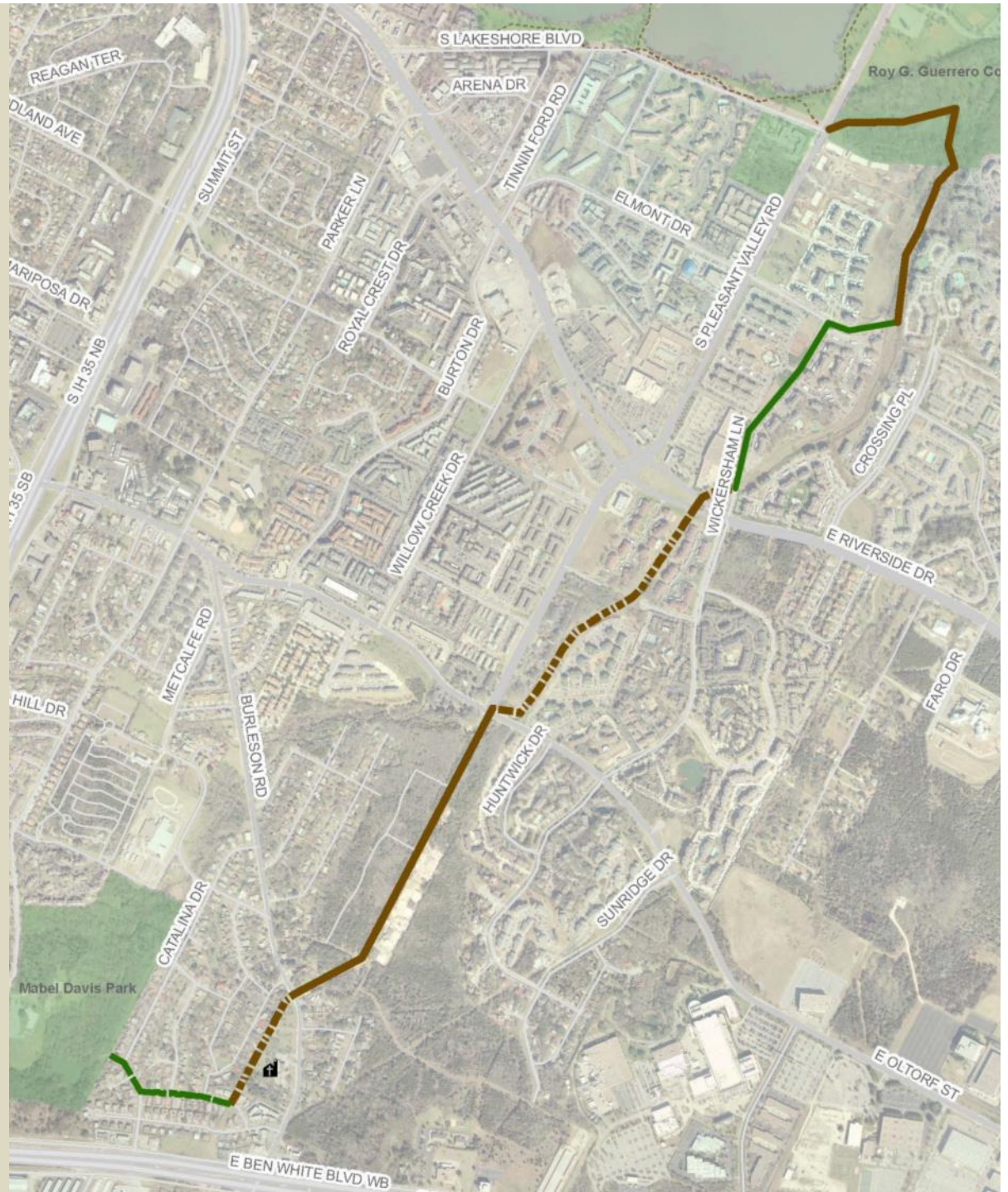
- Phase II: Second stakeholder meeting Jan. 16<sup>th</sup> @ Will Hampton Library
- Phase II: PER on-line by end of this week.
- Connects Home Deport Blvd. to the Veloway/LBJ Wildflower Center





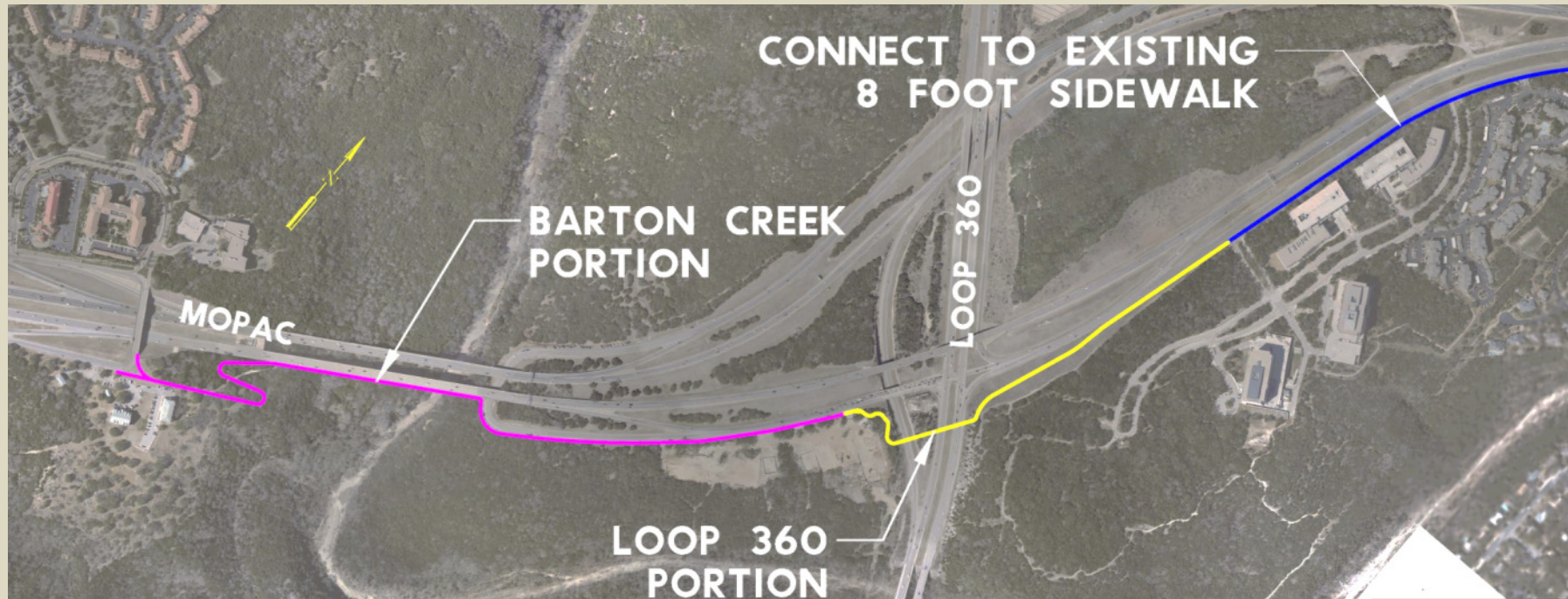
# Country Club Creek Trail

- 1<sup>st</sup> stakeholder meeting 12/9/14.
- 2<sup>nd</sup> stakeholder meeting will be in Feb. 2015.
- PER on-line
- 3 mi. of trail connecting Mabel Davis Park, Guerrero Park, and Butler Trail.
- Seeking funding for construction.



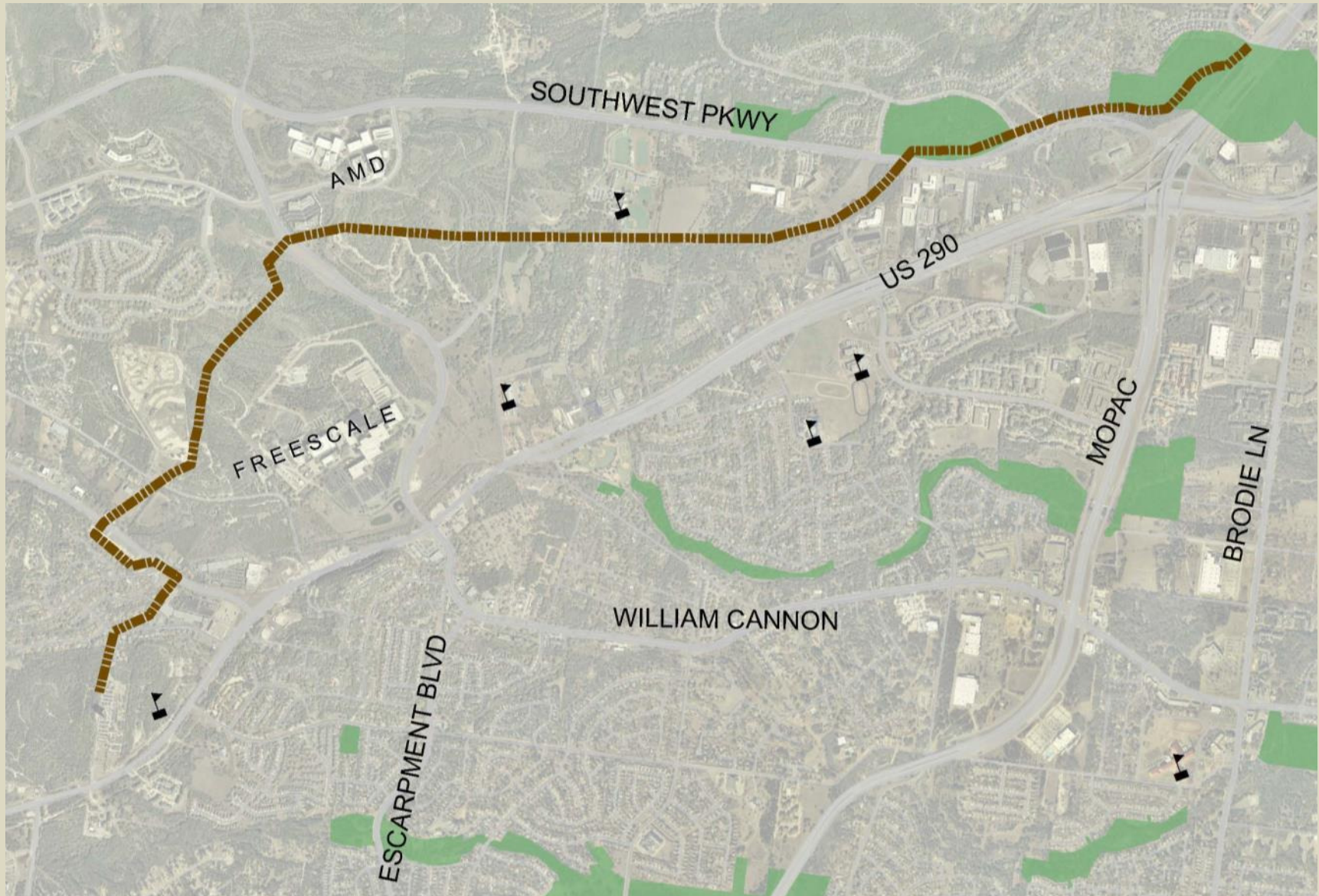


# Mopac Bicycle and Pedestrian Bridges





# YBC Trail



Preliminary Engineering and Design funded by 2012 Bond.



# Shoal Creek Restoration Lamar Trail



- From 15<sup>th</sup> Street to 24<sup>th</sup> Street
- Construction to be complete in 2018.

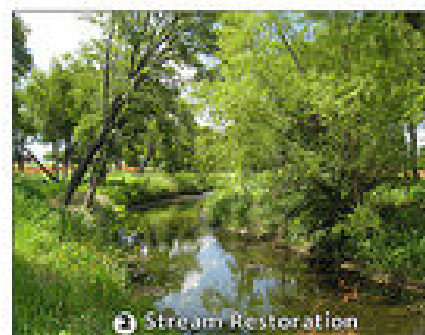
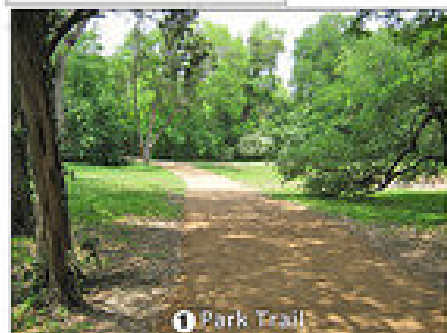
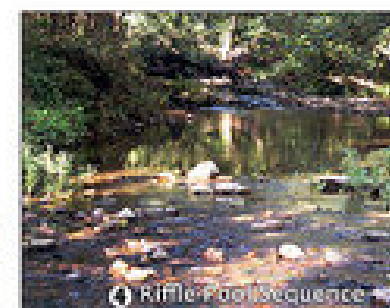
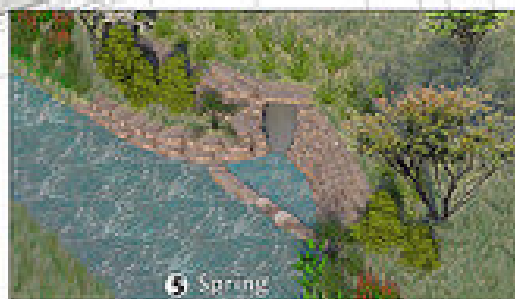




Construction to start summer 2015, construction complete 2016







## J.J. Seabrook Stream Restoration, Rain Garden and Urban Trail Project





# Questions?

